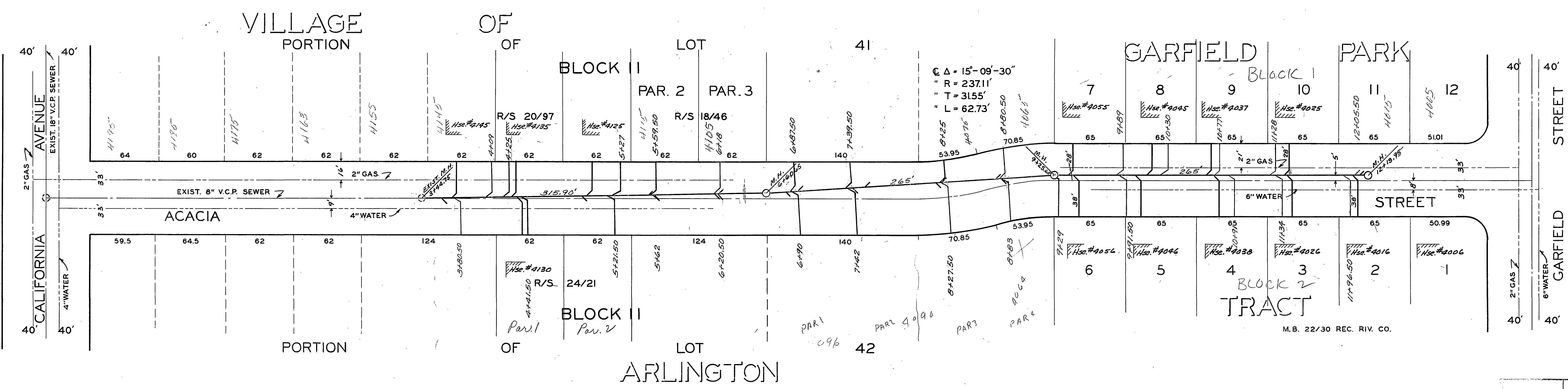


B.M. ELEV. 756.72 SPIKE IN POLE #16
 10759J ON N. SIDE CALIF. - 150' W. OF
 ACACIA F.B. 471/47

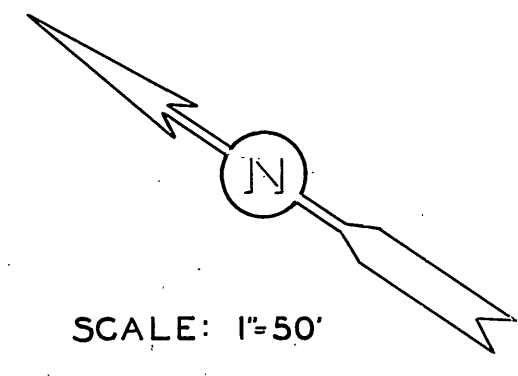
F.B. 400/34
 " 400/77
 " 594/27

SCALES: HOR. 1" = 50'
 VERT. 1" = 5'

PROFILE	DESIGNED	BY	DATE
NOTED	CHECKED		
NO.	DATE		



PLAN	DESIGNED	BY	DATE
NOTED	CHECKED		
NO.	DATE		



CITY OF RIVERSIDE CALIFORNIA
 DEPARTMENT OF PUBLIC WORKS

DESCRIPTION

ACACIA STREET
 SANITARY SEWER
 DISTRICT
 BET. CALIFORNIA AVE.
 AND GARFIELD ST.

APPROVED BY: *[Signature]*
 SUPERVISOR OF PUBLIC WORKS

DATE: June 8, 1956

S-35

R/S 24/21