

ESTIMATE OF QUANTITIES							
SHEET NO.	STREET NAME	PROP. P.W.	STO. M.M.	STO. CO.	8% C.P.	4\"/>	
1	LE CONTE DR.				7047'	3	
2	LE CONTE DR.	3			265'	10	
3	LE CONTE DR.	3			6834'	14	1.4
4	LE CONTE DR.	3			1000.37'	14	1.4
5	CHAPALA DRIVE	6	1		1112.55'	17	1.7
6	LA SUNDIA DEL ROSAS	3			852.12'	16	1.6
7	MARTE DEL ROSAS	2			845.34'	12	1.2
8	LOS ALTOS ST.	2	1		451.22'	9	0.9
TOTAL:		22	2		6413.87'	84	8.4

TRACT 2370

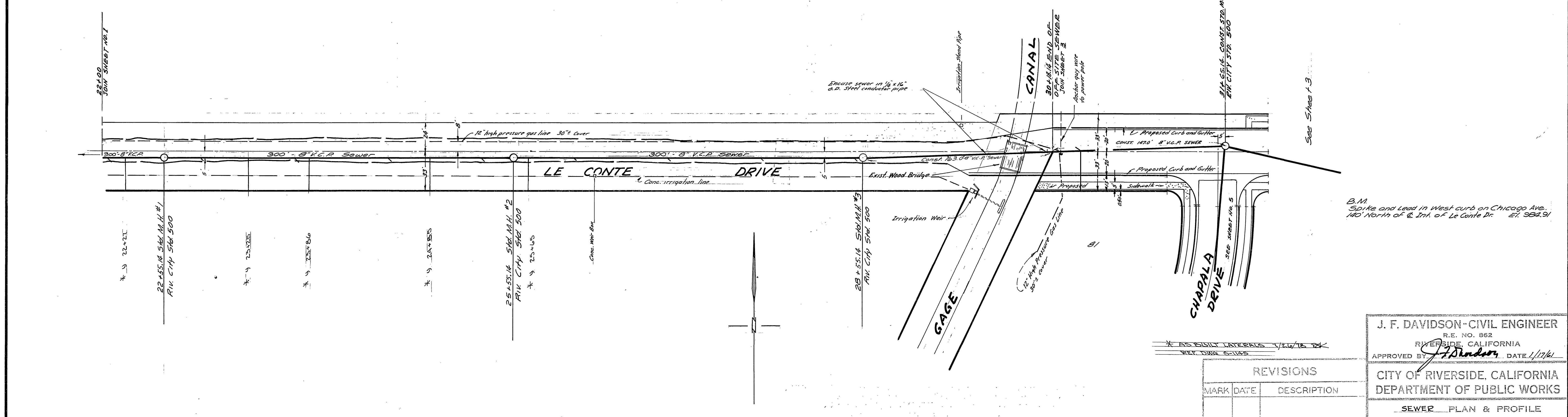
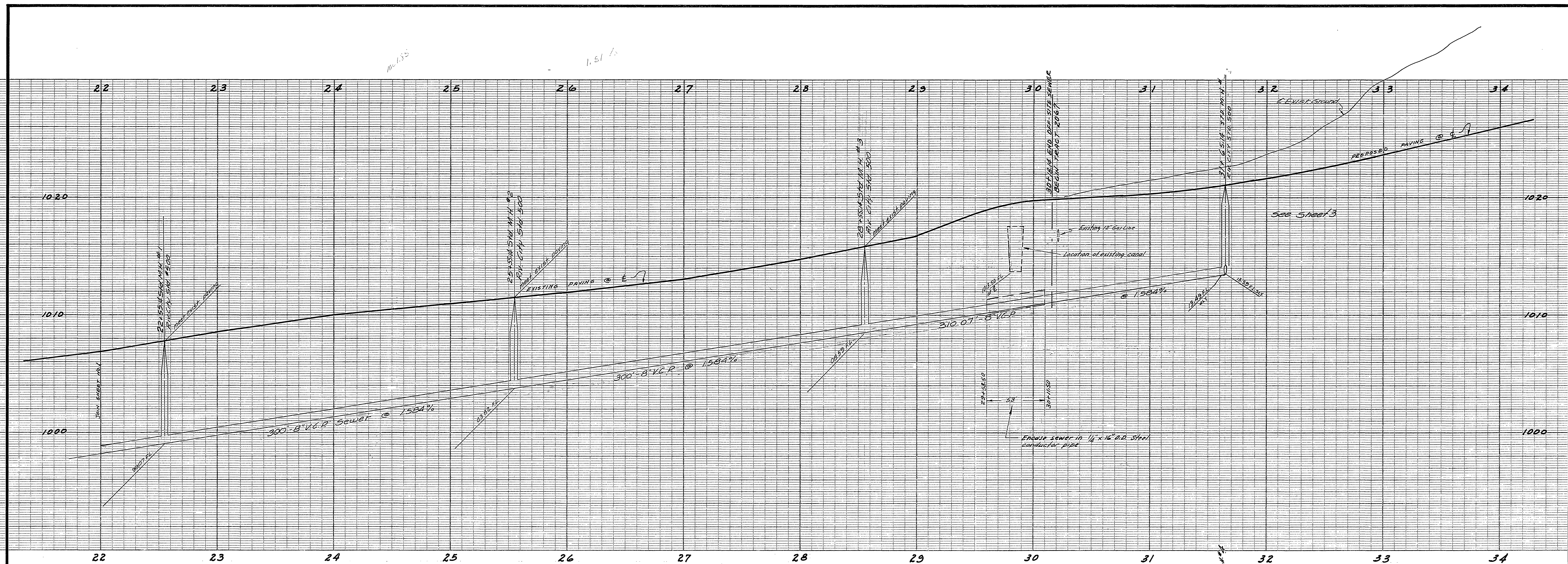
B.M. 544.10 West curb on Chicago Ave. 140' North of E. end of Le Conte Dr.  
Elev. 294.91

\* AS BUILT LATERALS 1/24/78 BK  
REF. DWG. S-1145

REVISIONS	
MARK	DATE
1	7/4/82

**J. F. DAVIDSON - CIVIL ENGINEER**  
R.E. NO. 862  
RIVERSIDE, CALIFORNIA  
APPROVED BY *J.F. Davidson* DATE 11/7/61  
CITY OF RIVERSIDE, CALIFORNIA  
DEPARTMENT OF PUBLIC WORKS  
SEWER PLAN & PROFILE  
LE CONTE DRIVE  
TRACT 2373  
HORIZ. SCALE 1"=40' VERT. SCALE 1"=4'  
DESIGNED BY  
DRAWN BY  
RECOMMENDED BY  
APPROVED BY *Don A. ...*  
NO. S-354  
DATE 5/4/62  
SHEET 1 OF 3





- NOTE:
- Boring to commence on East side of canal.
  - No open excavation to be made within the Gage Canal right of way.
  - If appreciable seepage from the canal occurs the boring operation shall cease, at the option of the Gage Canal, until the canal is dry during the winter season.
  - Reference is made to letter dated May 8, 1962 from Gage Canal covering license for sewer crossing.

REVISIONS		
MARK	DATE	DESCRIPTION

J. F. DAVIDSON - CIVIL ENGINEER  
 R.E. NO. 862  
 RIVERSIDE, CALIFORNIA  
 APPROVED BY *J.F. Davidson* DATE 1/17/61

CITY OF RIVERSIDE, CALIFORNIA  
 DEPARTMENT OF PUBLIC WORKS

SEWER PLAN & PROFILE  
 LE CONTE DRIVE

TRACT 2373  
 HORIZ. SCALE 1"=40' VERT. SCALE 1"=4'

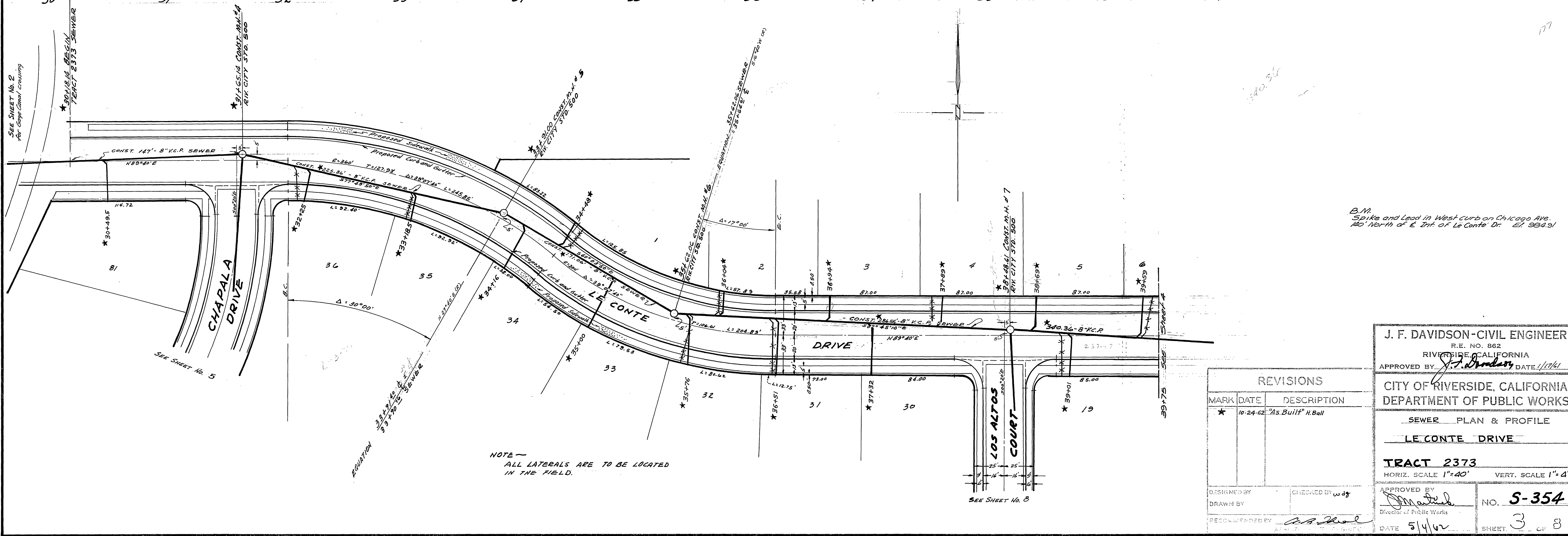
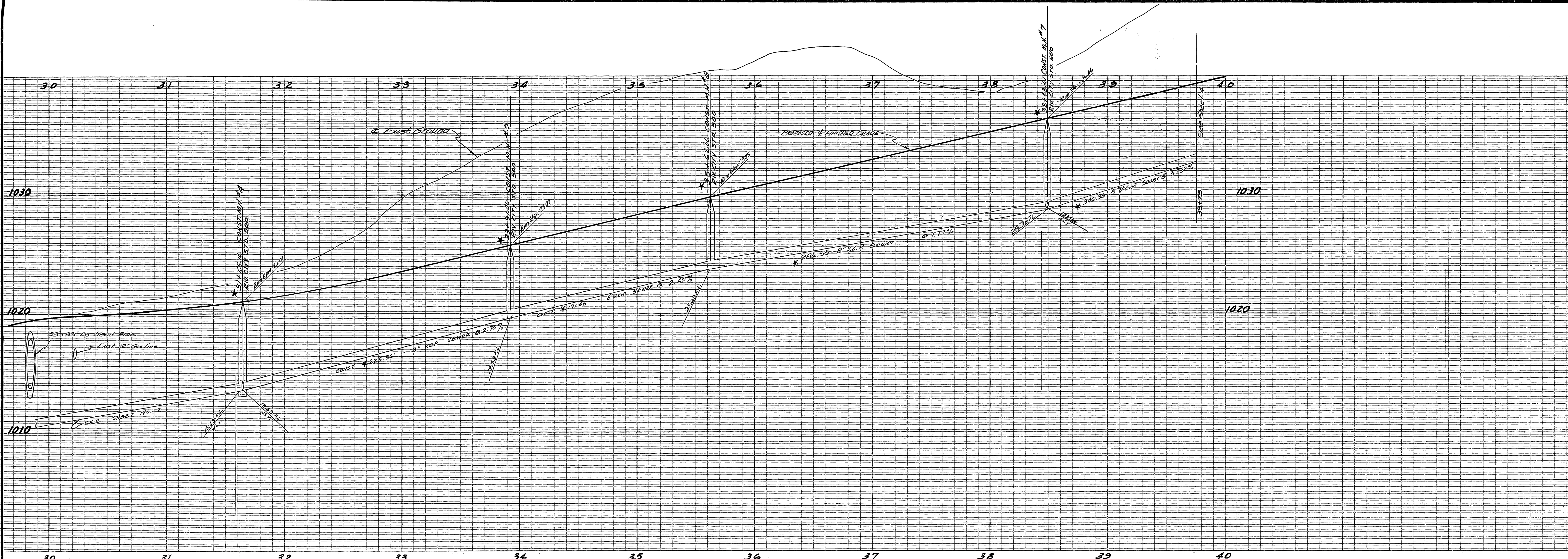
DESIGNED BY  
 DRAWN BY  
 RECOMMENDED BY *J.F. Davidson* ASSISTANT CITY ENGINEER

CHECKED BY *wjs*

APPROVED BY *J.F. Davidson* DIRECTOR OF PUBLIC WORKS  
 DATE 5-4-62

NO. S-354  
 SHEET 2 OF 8





B.M. Spike and Lead in West Curb on Chicago Ave. 100' North of E. End of Le Conte Dr. E.I. 989.91

NOTE - ALL LATERALS ARE TO BE LOCATED IN THE FIELD.

REVISIONS		
MARK	DATE	DESCRIPTION
*	10-24-62	"As Built" H. Ball

**J. F. DAVIDSON - CIVIL ENGINEER**  
 R.E. NO. 862  
 RIVERSIDE, CALIFORNIA  
 APPROVED BY *J. F. Davidson* DATE 1/17/61

**CITY OF RIVERSIDE, CALIFORNIA**  
 DEPARTMENT OF PUBLIC WORKS

SEWER PLAN & PROFILE  
 LE CONTE DRIVE

**TRACT 2373**  
 HORIZ. SCALE 1"=40' VERT. SCALE 1"=4'

DESIGNED BY \_\_\_\_\_ CHECKED BY *W.D.S.*  
 DRAWN BY \_\_\_\_\_  
 RECOMMENDED BY *C. B. ...*

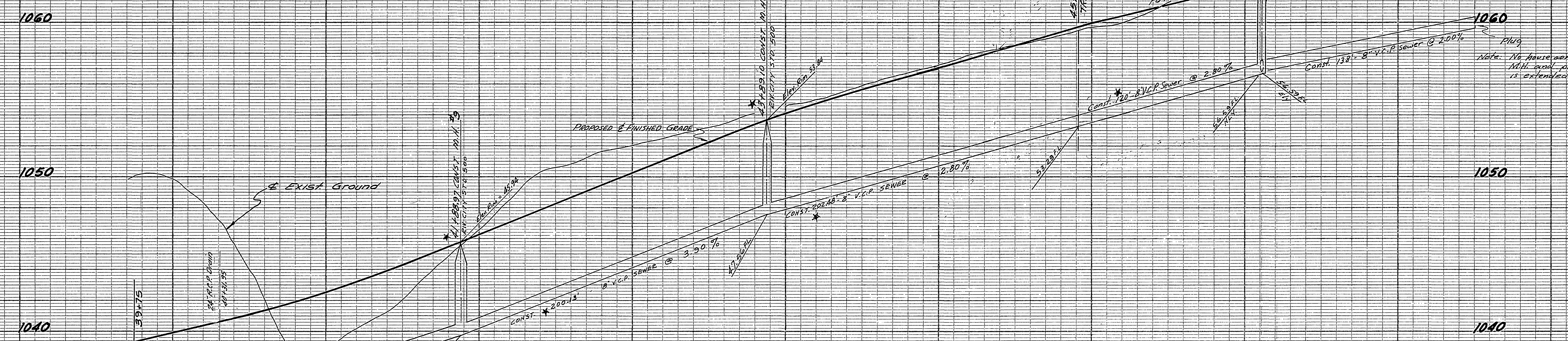
APPROVED BY *J. F. Davidson*  
 Director of Public Works

DATE 5/4/62

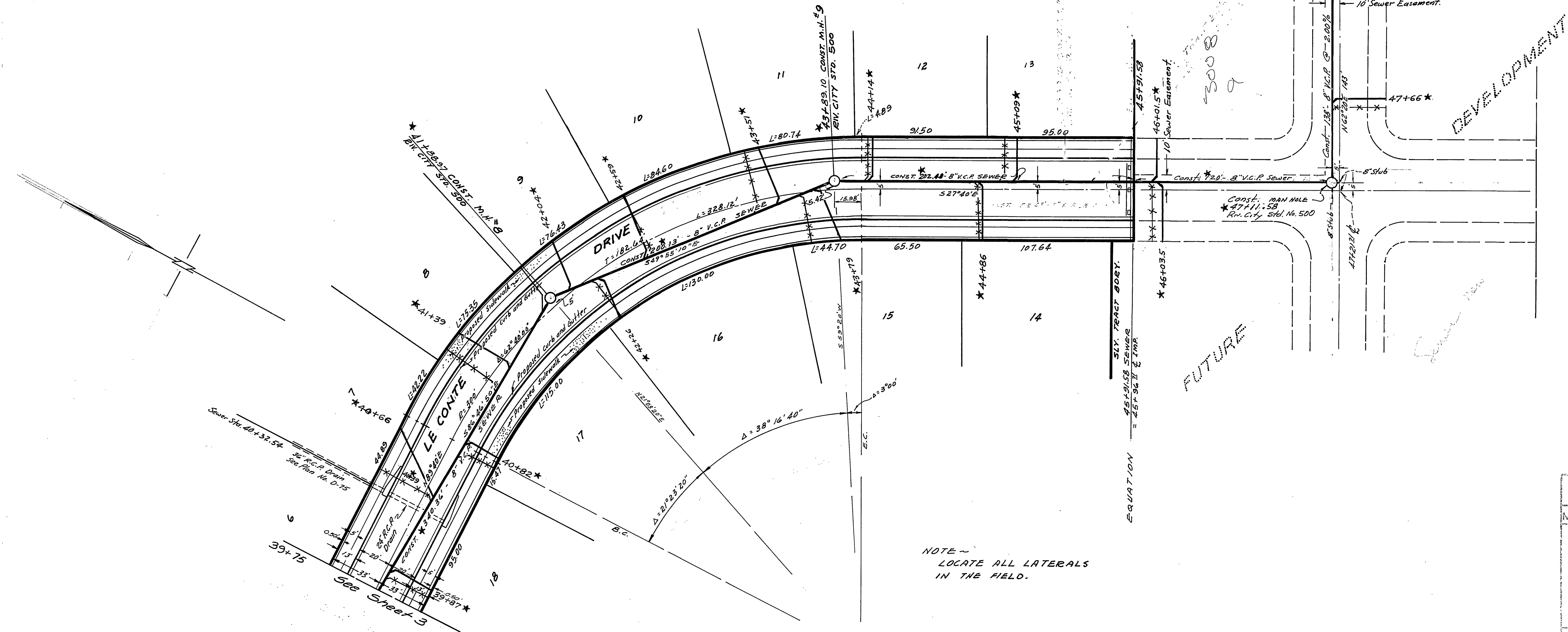
NO. **S-354**  
 SHEET 3 OF 8



39 40 41 42 43 44 45 46 47 48 49



39 40 41 42 43 44 45 46 47 48 49



NOTE -  
LOCATE ALL LATERALS  
IN THE FIELD.

B.M.  
50' N. and 10' W. of West curb on Chicago Ave.  
140' North of E. End of Le Conte Dr. Elev. 984.91

J. F. DAVIDSON-CIVIL ENGINEER  
R.E. NO. 992  
RIVERSIDE, CALIFORNIA  
APPROVED BY *J.F. Davidson* DATE 1/17/62

CITY OF RIVERSIDE, CALIFORNIA  
DEPARTMENT OF PUBLIC WORKS

SEWER PLAN & PROFILE  
LE CONTE DRIVE

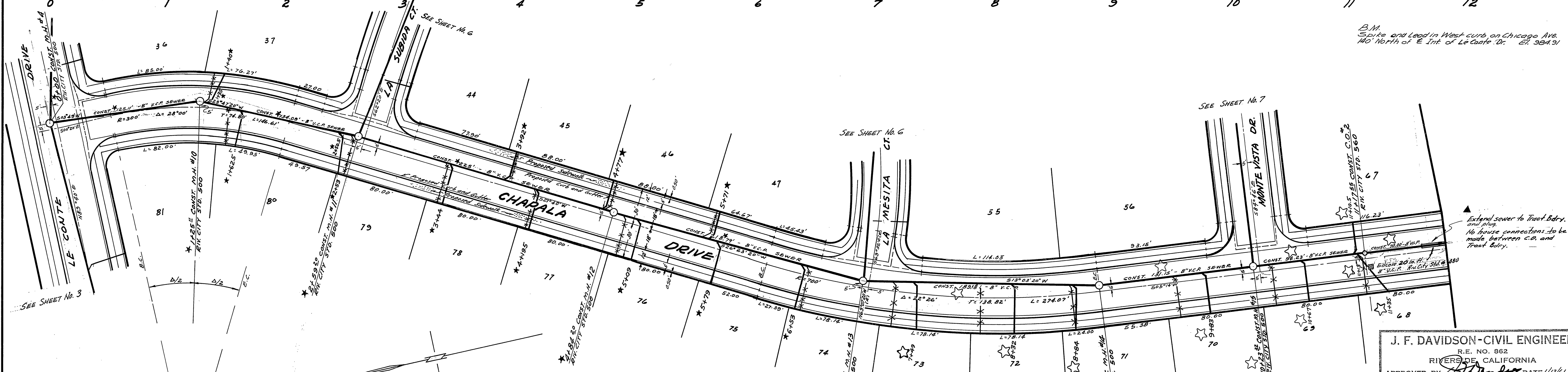
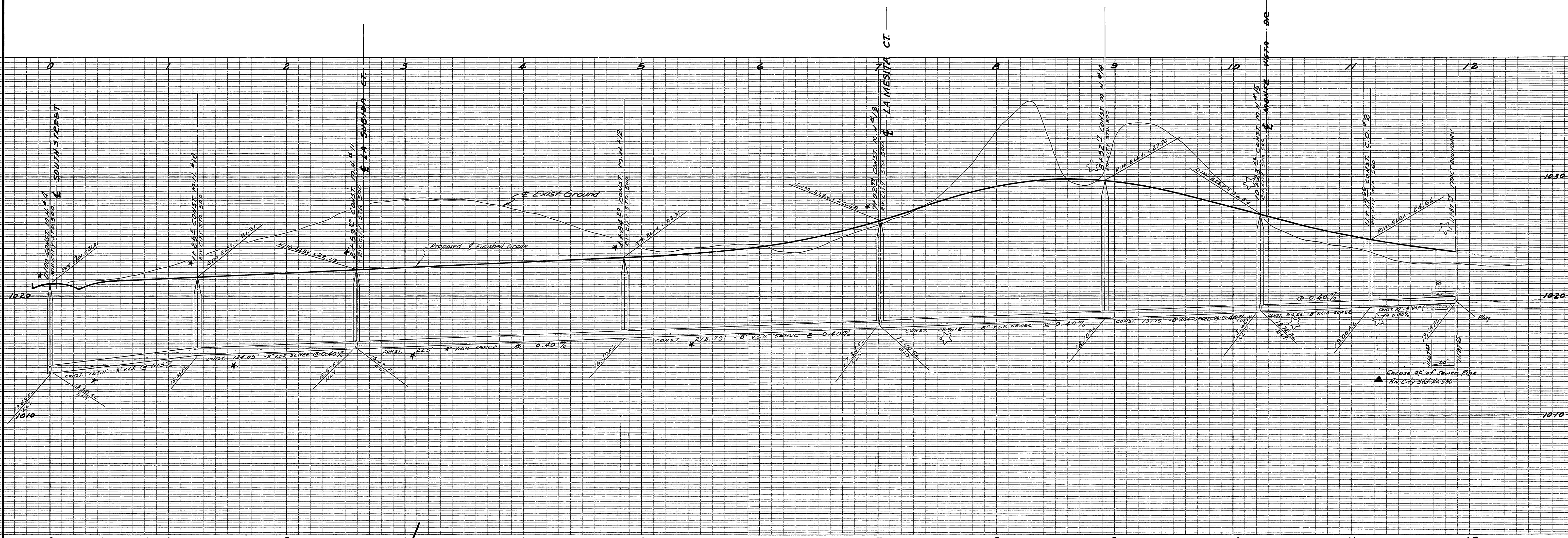
TRACT 2373  
HORIZ. SCALE 1"=20' VERT. SCALE 1"=4'

REVISIONS		
MARK	DATE	DESCRIPTION
*	10-24-62	As Built" H. Ball

DESIGNED BY  
DRAWN BY  
RECOMMENDED BY *Al. Shale*  
ASSISTANT CITY ENGINEER

APPROVED BY *Montiel*  
DIRECTOR OF PUBLIC WORKS  
DATE 5/4/62  
NO. S-354  
SHEET 4 OF 8





B.M. Spike and Lead in West curb, on Chicago Ave. 140' North of E. Int. of Le Conte Dr. E.L. 394.31

Extend sewer to Tract Bdry. and plug. No house connections to be made between C.D. and Tract Bdry.

NOTE - ALL LATERALS TO BE LOCATED IN THE FIELD.

REVISIONS		
MARK	DATE	DESCRIPTION
*	10-25-62	As Built "H. Ball"
▲	12/5/62	Extend Sewer to Tract Bdry w/ plug
□	12/7/62	Revised length of measurement
*	1-31-63	As Built "H. Ball"

J. F. DAVIDSON-CIVIL ENGINEER  
R.E. NO. 862  
RIVERSIDE, CALIFORNIA  
APPROVED BY *[Signature]* DATE 1/12/61

CITY OF RIVERSIDE, CALIFORNIA  
DEPARTMENT OF PUBLIC WORKS

SEWER PLAN & PROFILE  
CHAPALA DRIVE

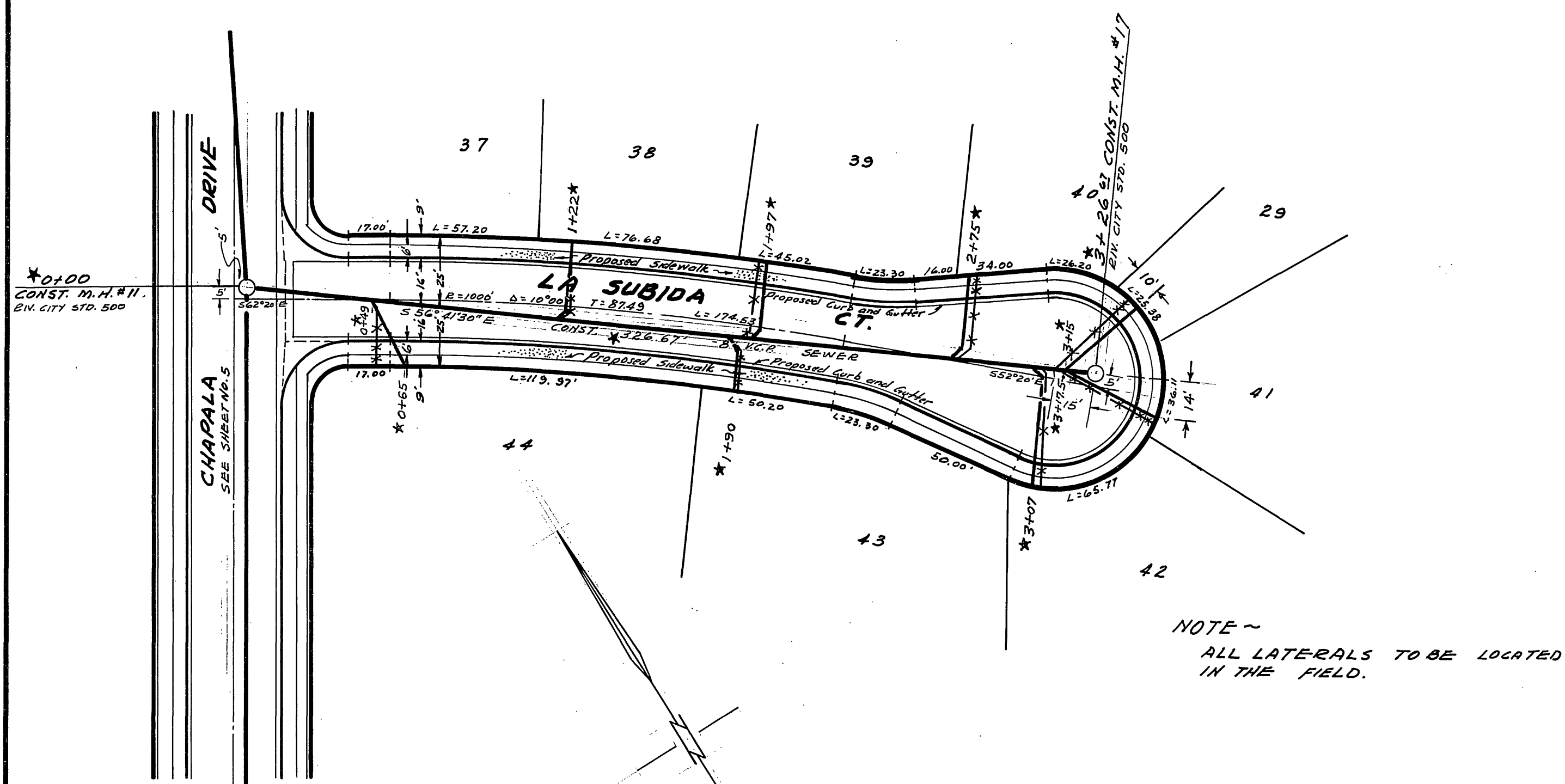
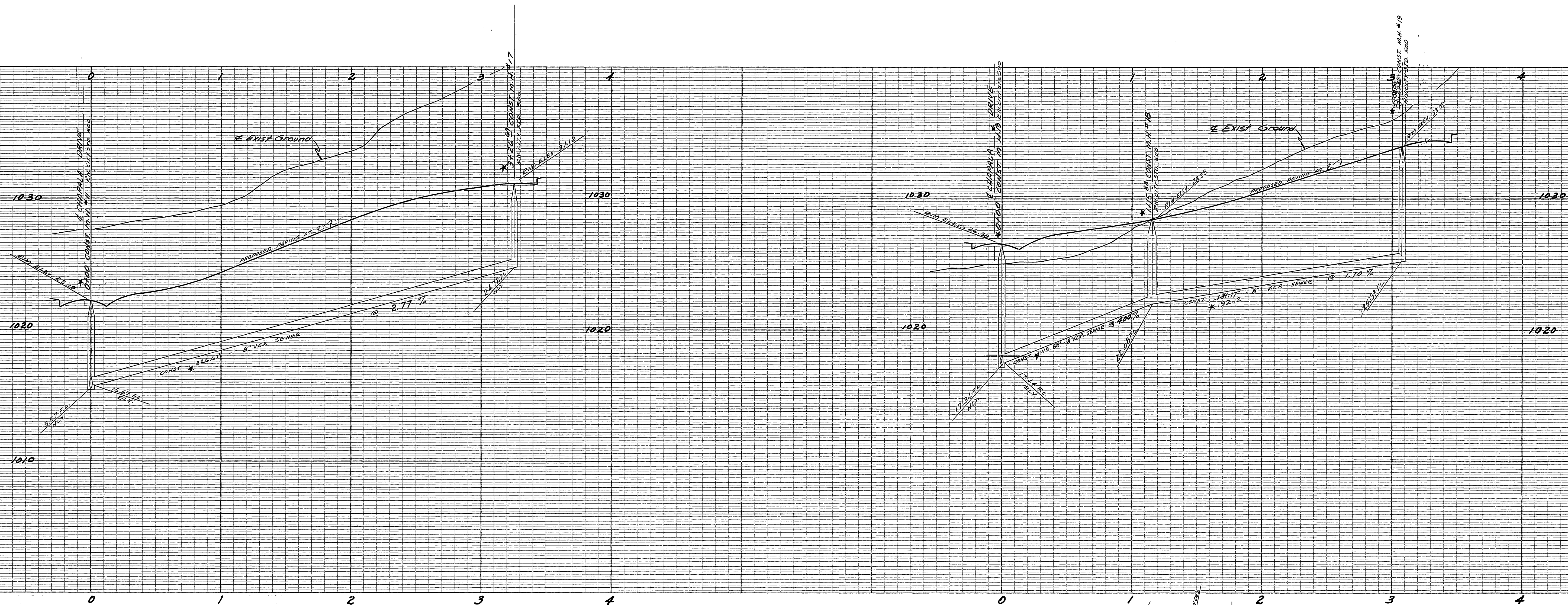
TRACT 2373  
HORIZ. SCALE 1"=40' VERT. SCALE 1"=4'

DESIGNED BY  
DRAWN BY  
RECOMMENDED BY *[Signature]*  
ASSISTANT CITY ENGINEER

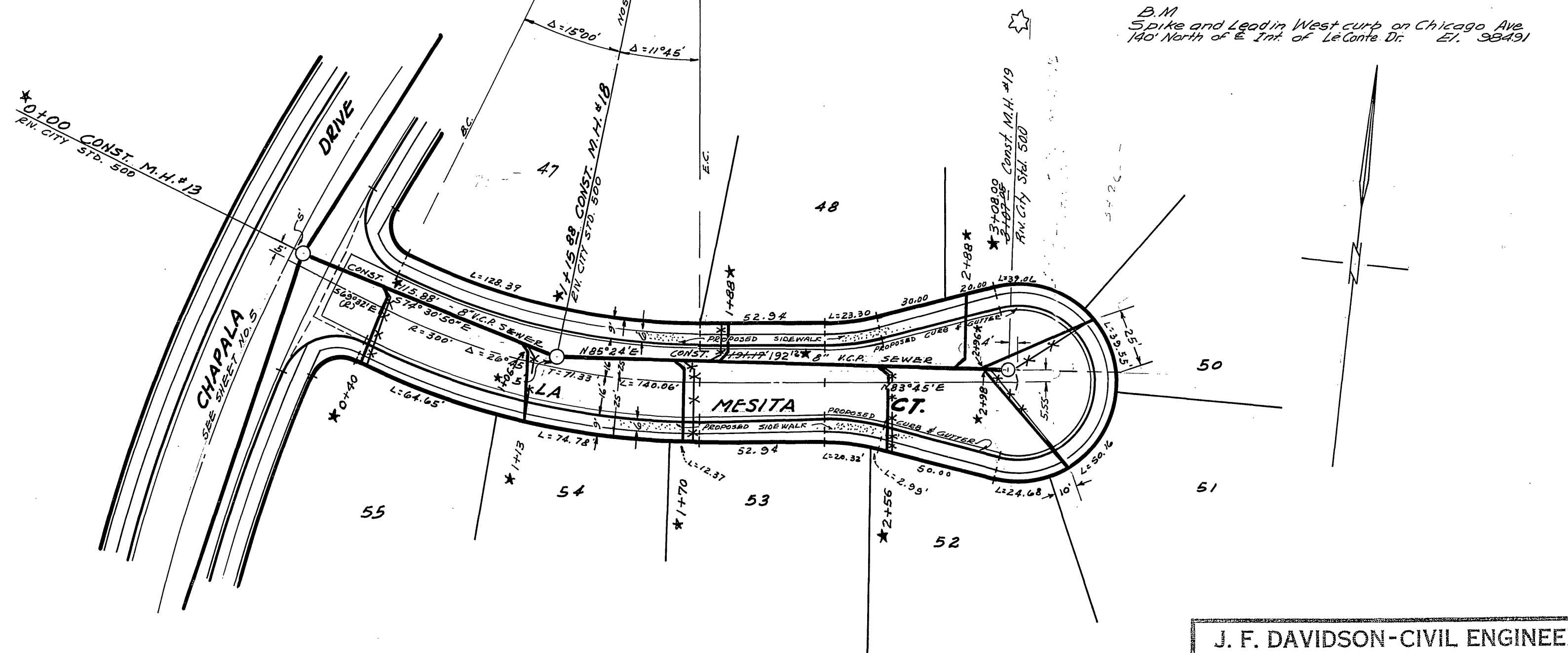
APPROVED BY *[Signature]*  
DIRECTOR OF PUBLIC WORKS  
DATE 5/4/62

NO. S-354  
SHEET 5 OF 8





NOTE ~  
ALL LATERALS TO BE LOCATED  
IN THE FIELD.



J. F. DAVIDSON-CIVIL ENGINEER  
R.E. NO. 862  
RIVERSIDE, CALIFORNIA  
APPROVED BY *J.F. Davidson* DATE 1/17/61

CITY OF RIVERSIDE, CALIFORNIA  
DEPARTMENT OF PUBLIC WORKS

SEWER PLAN & PROFILE  
LA SUBIDA CT. ~ LA MESITA CT.

TRACT 2373  
HORIZ. SCALE 1"=40' VERT. SCALE 1"=4'

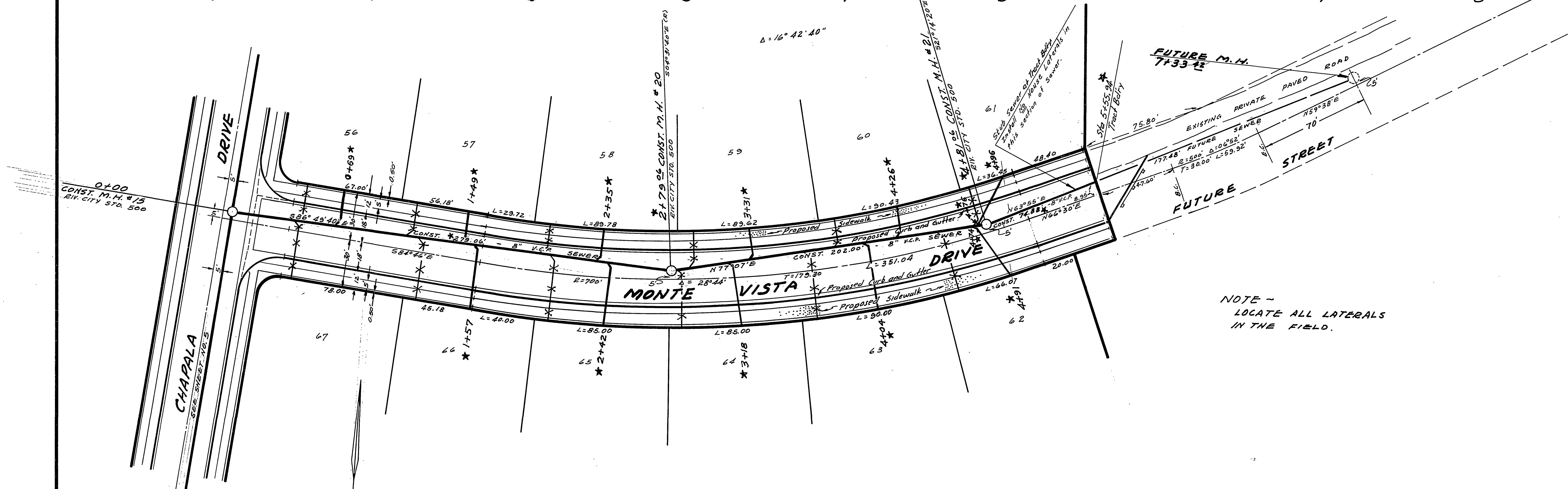
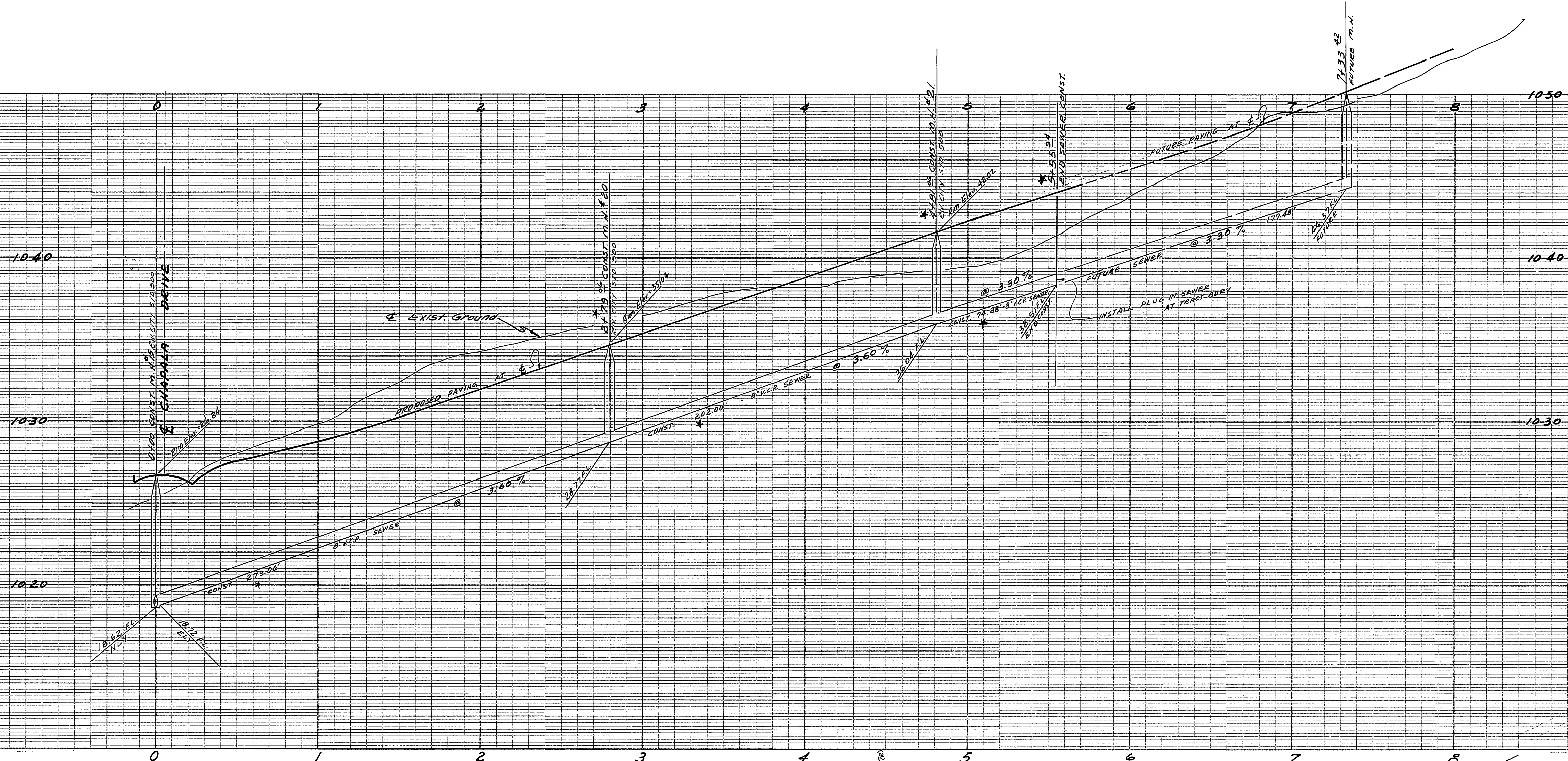
REVISIONS		
MARK	DATE	DESCRIPTION
*	9/4/62	Moved M.H. #19 19' W. of old. Approved <i>J. Davidson</i> Director of Public Works W.D.S. D.A.U.
*	10-25-62	"As Built" H. Ball

DESIGNED BY  
DRAWN BY  
RECOMMENDED BY *J.F. Davidson*  
ASSISTANT CITY ENGINEER

CHECKED BY *W.D.S.*  
APPROVED BY *J.F. Davidson*  
DIRECTOR OF PUBLIC WORKS  
DATE 5/4/62

NO. S-354  
SHEET 6 OF 8





B.M. Spike and Lead in West curb on Chicago Ave 140 North of E. Int. of Le Conte Dr. E.T. 38491

NOTE - LOCATE ALL LATERALS IN THE FIELD.

J. F. DAVIDSON-CIVIL ENGINEER  
R.E. NO. 862  
RIVERSIDE, CALIFORNIA  
APPROVED BY *J.F. Davidson* DATE 1/17/61

REVISIONS	
MARK	DESCRIPTION
★	1-31-63 "As Built" H.B. 11

CITY OF RIVERSIDE, CALIFORNIA  
DEPARTMENT OF PUBLIC WORKS  
SEWER PLAN & PROFILE  
MONTE VISTA DRIVE  
TRACT 2373  
HORIZ. SCALE 1"=40' VERT. SCALE 1"=4'  
DESIGNED BY \_\_\_\_\_ CHECKED BY *wjg*  
DRAWN BY \_\_\_\_\_  
RECOMMENDED BY *J.F. Davidson* ASSISTANT CITY ENGINEER  
APPROVED BY *J.F. Davidson* Director of Public Works  
DATE 5/4/62 SHEET 7 OF 8



