

ASSESSMENT NO. 497

DIAGRAM

EXHIBITING PARKVIEW TERRACE SANITARY SEWER DISTRICT
IN THE CITY OF RIVERSIDE, CALIFORNIA, BY THE WORK WHICH HAS BEEN DONE
PURSUANT TO THE CONTRACT BETWEEN THE SUPERINTENDENT OF STREETS OF
SAID CITY AND CALIFORNIA ASPHALT COMPANY DATED DECEMBER 18, 1963,
FOR THE CONSTRUCTION OF A SANITARY SEWER AND APPURTENANCES.

AS IS MORE PARTICULARLY DESCRIBED IN SAID CONTRACT TO WHICH REFERENCE
IS HEREBY MADE FOR FURTHER PARTICULARS.
SAID DIAGRAM ALSO SHOWS EACH SEPARATE LOT OR PARCEL OF LAND WITHIN THE
LIMITS OF THE ASSESSMENT DISTRICT, AND THE DIMENSIONS OF EACH SUCH LOT OR
PARCEL OF LAND, AND THE RELATIVE LOCATION OF THE SAME TO THE WORK DONE
EACH LOT OR PARCEL OF LAND IS INDICATED IN RED INK TO CORRELATE TO THE
RED OR REDDISH PINK TO PROPERTY LINES SHOWN LENGTH OF SAID LINES IN FEET
AND FRACTIONS THEREOF.
THE MARKS HEREON ARE:
PROPERTY LINES THAT DIFFER FROM THE RECORDED SUBDIVISIONS ARE SHOWN BY
BROKEN LINES.
THE DISTRICT BENEFITED IS BOUNDED BY A HEAVY DASHED LINE.
PROPERTY INCLUDED IN THIS ASSESSMENT IS SHOWN ON THE FOLLOWING RECORD
OF MAPS:
PARK HILL ESTATES - M.B. 28, PG. 80-81, RECORDS OF RIVERSIDE COUNTY.

HEREIN THE DIFFERENT KINDS OF WORK
PERFORMED ARE SHOWN AS FOLLOWS:

- -- 6" MAIN SEWER
- -- 6"x 4" WYE
- ———— -- MANHOLE
- ⊙ ———— -- CLEANOUT

HERE FOLLOWS A STATEMENT OF AMOUNTS OF
DIFFERENT KINDS OF WORK DONE PURSUANT TO
THE HERE-IN-BEFORE IDENTIFIED CONTRACT
AND TO RESOLUTION OF INTENTION NO. 9777,
ADOPTED BY THE CITY COUNCIL OF THE CITY
OF RIVERSIDE, CALIFORNIA ON THE 3RD DAY
OF SEPTEMBER 1963

- 1032 L.F. 6" VITRIFIED CLAY PIPE
- 14 EA. 6"x4" WYES
- 4 EA. MANHOLES - STD. DWG. NO. 500
- 1 EA. CLEANOUT - STD. DWG. NO. 560
- L.S. EARTHWORK

I HEREBY CERTIFY THAT THE ABOVE WORK WAS DONE IN ACCORDANCE
WITH LINES AND QUANTITIES SUPPLIED OR APPROVED BY ME, AND THAT
THE DIAGRAM OF THE ASSESSMENT DISTRICT AND THE QUANTITIES
OF WORK SHOWN HEREON ARE CORRECT.

John A. ...
CITY ENGINEER OF THE
CITY OF RIVERSIDE, CALIFORNIA

DIAGRAM RECEIVED:

THIS DAY OF 1963

SUPERINTENDENT OF STREETS OF THE
CITY OF RIVERSIDE, CALIFORNIA

RECORDED:

AT COCKER, W.,
THIS DAY OF 1963

SUPERINTENDENT OF STREETS OF THE
CITY OF RIVERSIDE, CALIFORNIA

ASSESSMENT NO. 497

DIAGRAM

EXHIBITING PARKVIEW TERRACE SANITARY SEWER DISTRICT
IN THE CITY OF RIVERSIDE, CALIFORNIA, AND THE WORK WHICH HAS BEEN DONE
PURSUANT TO THE CONTRACT BETWEEN THE SUPERINTENDENT OF STREETS OF
SAID CITY AND CALIFORNIA ASPHALT COMPANY DATED DECEMBER 14, 1933,
FOR THE CONSTRUCTION OF A SANITARY SEWER AND APPURTENANCES.

AS IS MORE PARTICULARLY DESCRIBED IN SAID CONTRACT, TO WHICH REFERENCE
IS HEREBY MADE FOR FURTHER PARTICULARS.
SAID DIAGRAM ALSO SHOWS EACH SEPARATE LOT OR PARCEL OF LAND WITHIN THE
LIMITS OF THE ASSESSMENT DISTRICT, AND THE DIMENSIONS OF EACH SUCH LOT OR
PARCEL OF LAND, AND THE RELATIVE LOCATION OF THE SAME TO THE WORK DONE.
EACH LOT OR PARCEL OF LAND IS NUMBERED IN RED INK TO CORRESPOND TO THE
RED INK NUMBERS IN THE ASSESSMENT.
HEREIN FIGURES NEXT TO PROPERTY LINES SHOW LENGTH OF SAID LINES IN FEET
AND DECIMALS THEREOF.
THE MARK (') MEANS FEET.
PROPERTY LINES THAT DIFFER FROM THE RECORDED SUBDIVISIONS ARE SHOWN BY
BROKEN LINES.
THE DISTRICT BENEFITED IS BOUNDED BY A HEAVY DASHED LINE.
PROPERTY INCLUDED IN THIS ASSESSMENT IS SHOWN ON THE FOLLOWING RECORD-
ED MAPS:
PARK HILL PLATS - NO. 24, PG. 20-8, RECORDS OF RIVERSIDE COUNTY.

HEREIN THE DIFFERENT KINDS OF WORK
PERFORMED ARE SHOWN AS FOLLOWS:

- 6" MANHOLES
- 6" WYES
- MANHOLES
- CLEANOUT

HERE FOLLOWS A STATEMENT OF AMOUNTS OF
DIFFERENT KINDS OF WORK DONE PURSUANT TO
THE HERE-IN-BEFORE IDENTIFIED CONTRACT
AND TO RESOLUTION OF INTENTION NO. 3777,
ADOPTED BY THE CITY COUNCIL OF THE CITY
OF RIVERSIDE, CALIFORNIA ON THE 30th DAY
OF SEPTEMBER, 1933.

- 1032 LB. 6" VITRIFIED CLAY PIPE
- 16 EA. 6" WYES
- 4 EA. MANHOLES - STD. DWG. NO. 500
- 1 EA. CLEANOUT - STD. DWG. NO. 500
- 1.5 EARTHWORK

I HEREBY CERTIFY THAT THE ABOVE WORK WAS DONE IN ACCORDANCE
WITH LINES AND GRADES FURNISHED OR APPROVED BY ME, AND THAT
THE DIAGRAM OF THE ASSESSMENT DISTRICT AND THE QUANTITIES
OF WORK SHOWN HEREON ARE CORRECT.



CITY ENGINEER OF THE
CITY OF RIVERSIDE, CALIFORNIA

DIAGRAM RECEIVED:

THIS DAY OF , 19

SUPERINTENDENT OF STREETS OF THE
CITY OF RIVERSIDE, CALIFORNIA

RECORDED:

AT O'CLOCK, .M.,
THIS DAY OF , 19

SUPERINTENDENT OF STREETS OF THE
CITY OF RIVERSIDE, CALIFORNIA

SCALE 1"=100'

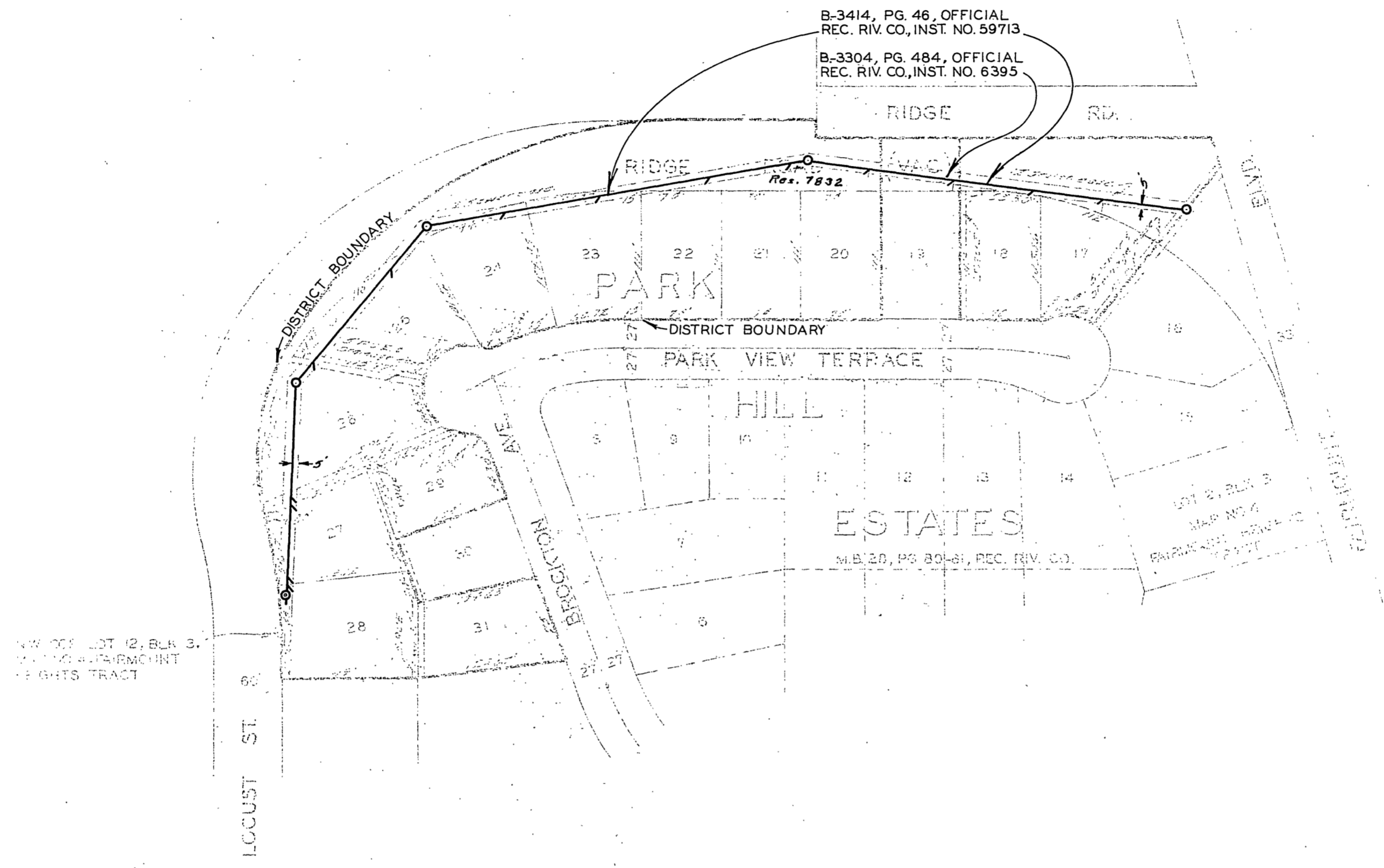
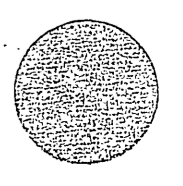
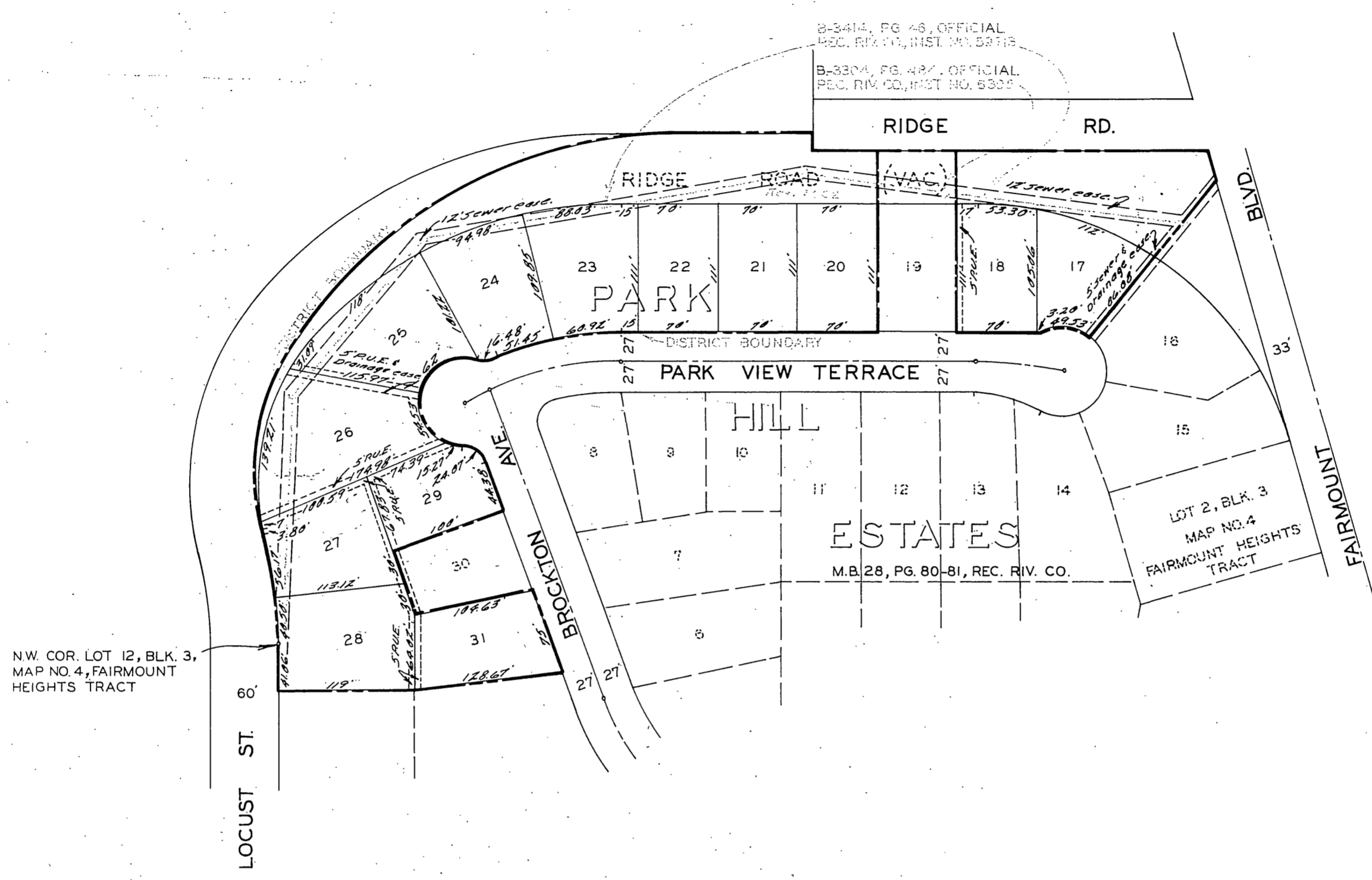
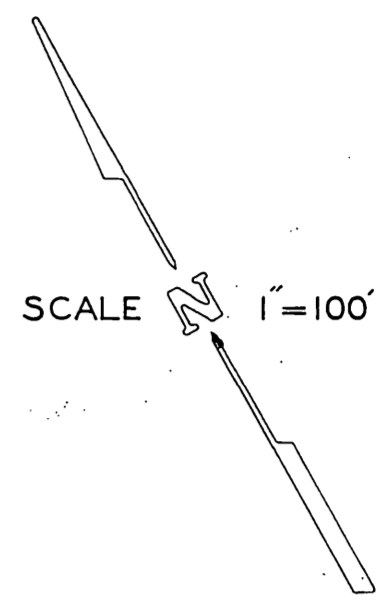


DIAGRAM OF THE PROPERTY AFFECTED OR BENEFITED BY THE WORK IN THE PARK VIEW TERRACE SANITARY SEWER DISTRICT.

REVISIONS		CITY OF RIVERSIDE, CALIFORNIA	
DATE	BY	DEPARTMENT OF PUBLIC WORKS	
		PARK VIEW TERRACE	
		SANITARY SEWER DISTRICT	
DESIGNED BY	W. S. Hanson	PLANNED BY	J. Matlock
CHECKED BY		DATE	3-11-64
APPROVED BY	A. B. Schaal	PROJECT NO.	3-356-B
		SCALE	2-2





NW COR. LOT 12, BLK. 3,
MAP NO. 4, FAIRMOUNT
HEIGHTS TRACT

DIAGRAM OF THE PROPERTY AFFECTED OR BENEFITED
BY THE WORK IN THE PARK VIEW TERRACE SANITARY
SEWER DISTRICT.

REVISIONS			CITY OF RIVERSIDE, CALIFORNIA DEPARTMENT OF PUBLIC WORKS	
MARK	DATE	DESCRIPTION		
			PARK VIEW TERRACE SANITARY SEWER DISTRICT	
DESIGNED BY		SUBMITTED BY		APPROVED BY
DRAWN BY <i>Lee</i>		PARK DEPT. TRAFFIC DIV.		DIRECTOR OF PUBLIC WORKS
CHECKED BY		RECOMMENDED BY		DATE
				PROJ. NO. 6037
				S-356
				SHEET ___ OF ___