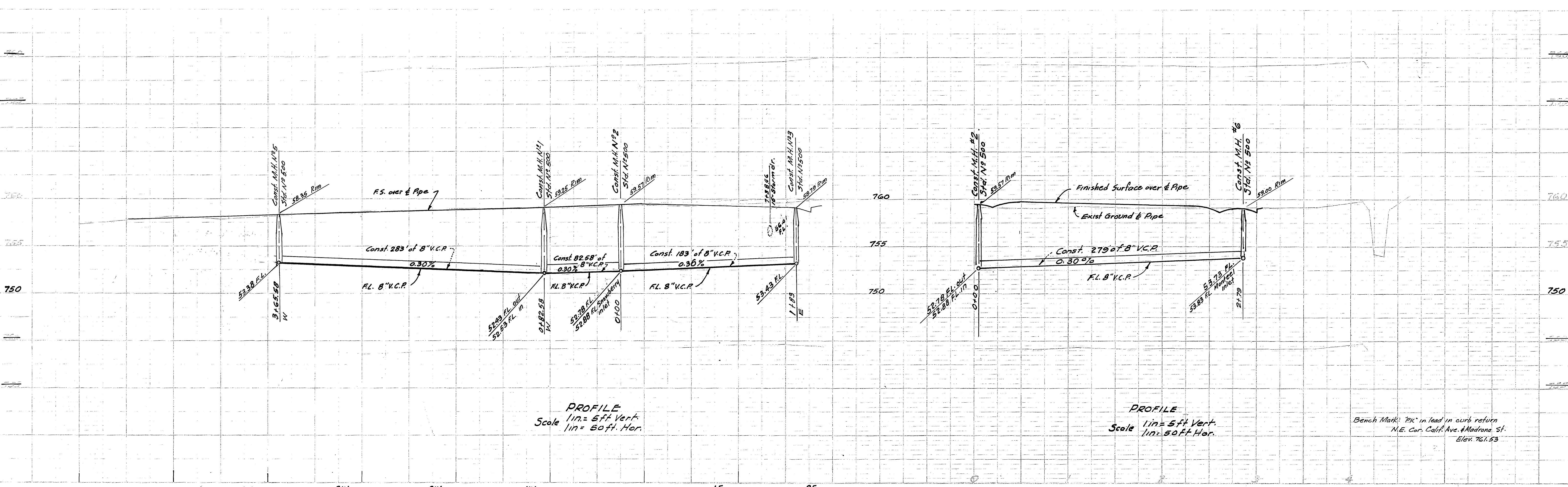


PROFILE
 SHEET NO. 1
 DATE 4-3-62

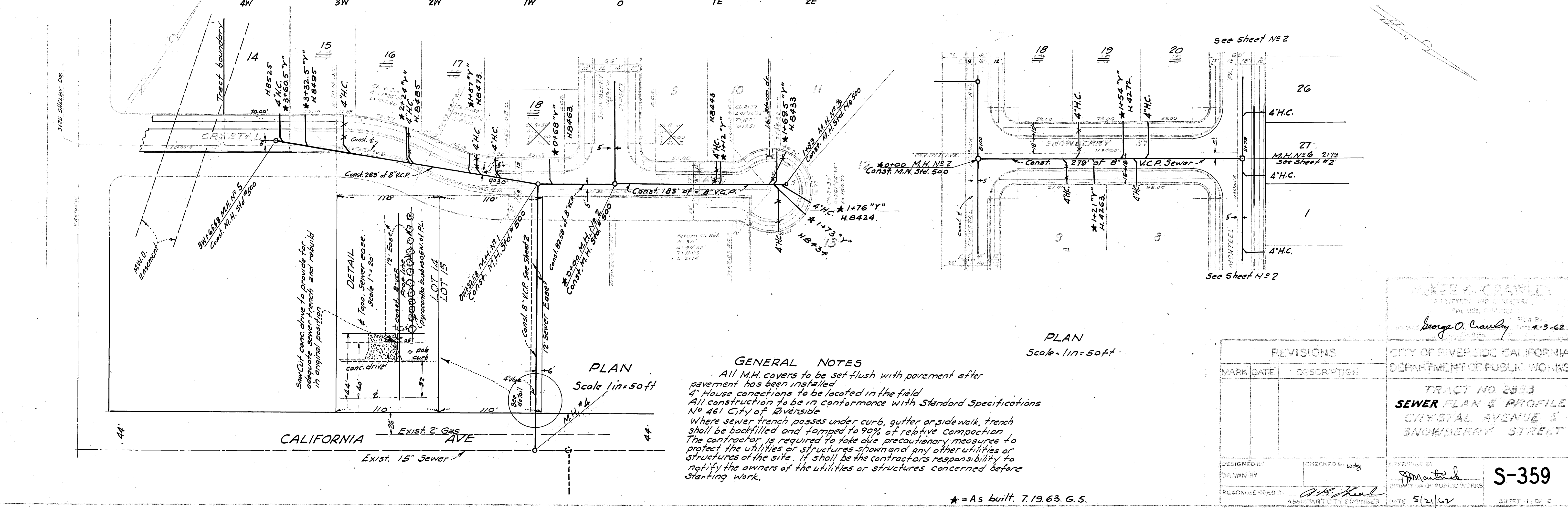
PLAN
 SHEET NO. 1
 DATE 4-3-62



PROFILE
 1 in. = 5 ft Vert.
 1 in. = 50 ft Hor.

PROFILE
 1 in. = 5 ft Vert.
 1 in. = 50 ft Hor.

Bench Mark: 'PK' in lead in curb return
 N.E. Cor. Calif. Ave. & Madrona St.
 Elev. 761.53



PLAN
 Scale 1 in. = 50 ft

PLAN
 Scale 1 in. = 50 ft

GENERAL NOTES
 All M.H. covers to be set flush with pavement after pavement has been installed.
 4" House connections to be located in the field.
 All construction to be in conformance with Standard Specifications No 461 City of Riverside.
 Where sewer trench passes under curb, gutter or sidewalk, trench shall be backfilled and tamped to 90% of relative compaction. The contractor is required to take due precautionary measures to protect the utilities or structures shown and any other utilities or structures of the site. It shall be the contractor's responsibility to notify the owners of the utilities or structures concerned before starting work.

* = As built. 7.19.63. G.S.

McKee & Crawley
 ENGINEERS AND ARCHITECTS
 1000 N. G Street
 Riverside, California
 Prepared by *George O. Crawley* Field By *George O. Crawley* Date 4-3-62

CITY OF RIVERSIDE CALIFORNIA
 DEPARTMENT OF PUBLIC WORKS

TRACT NO. 2853
SEWER PLAN & PROFILE
 CRYSTAL AVENUE &
 SNOWBERRY STREET

REVISIONS		
MARK	DATE	DESCRIPTION

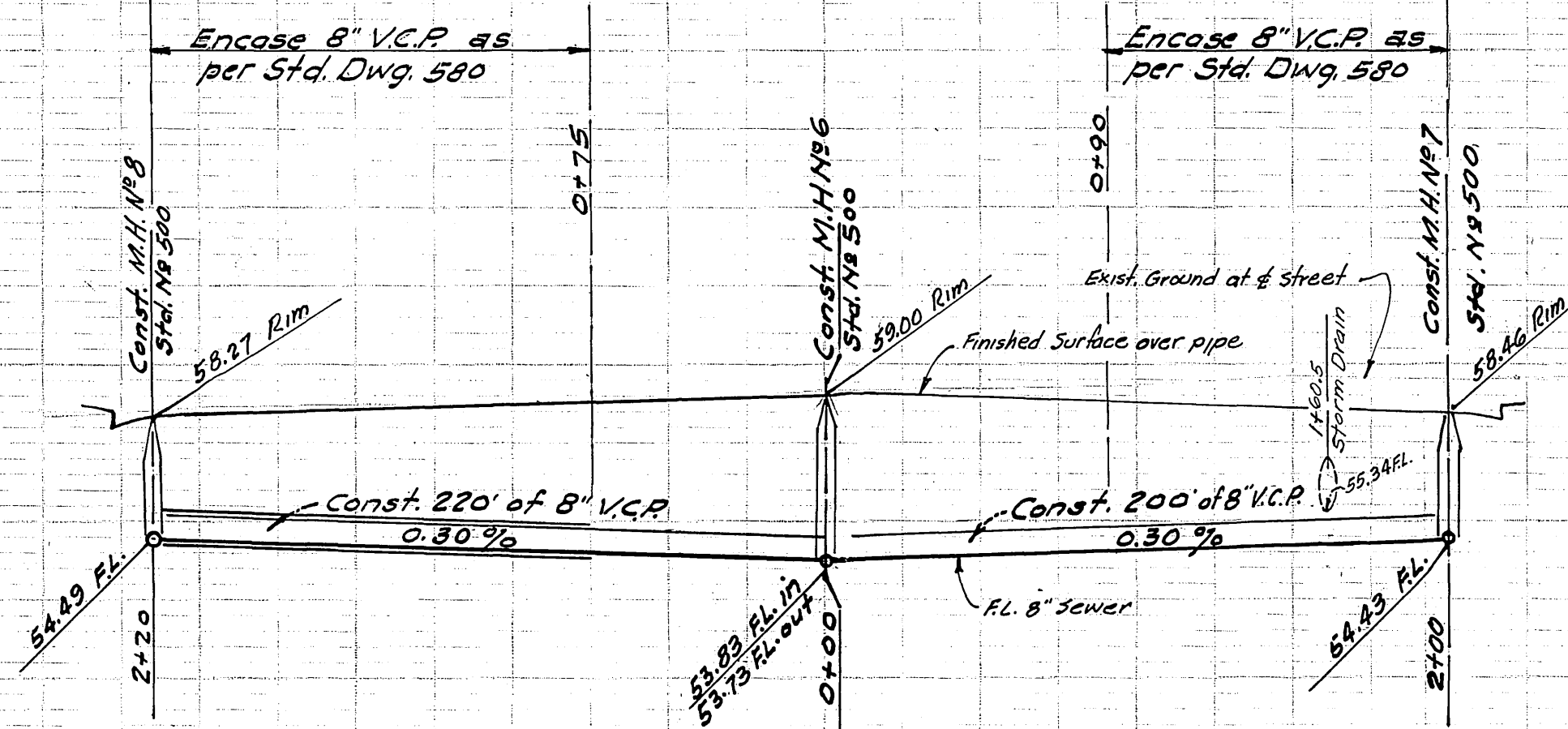
DESIGNED BY
 DRAWN BY
 RECOMMENDED BY *A.H. Neal*
 ASSISTANT CITY ENGINEER

CHECKED BY *W.D. Waddy*
 DATE 5/21/62

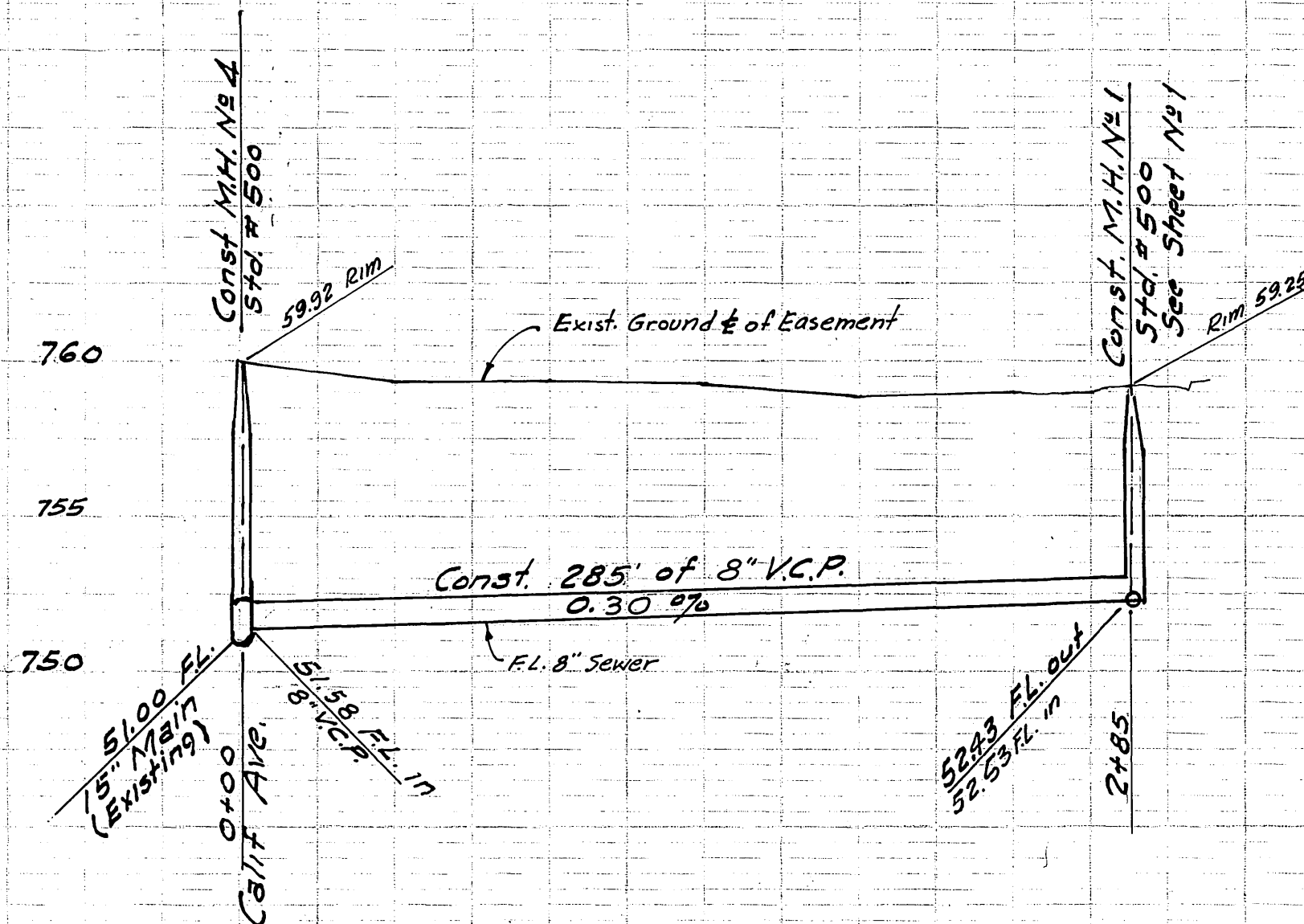
APPROVED BY *George O. Crawley*
 DIRECTOR OF PUBLIC WORKS

S-359

SHEET 1 OF 2

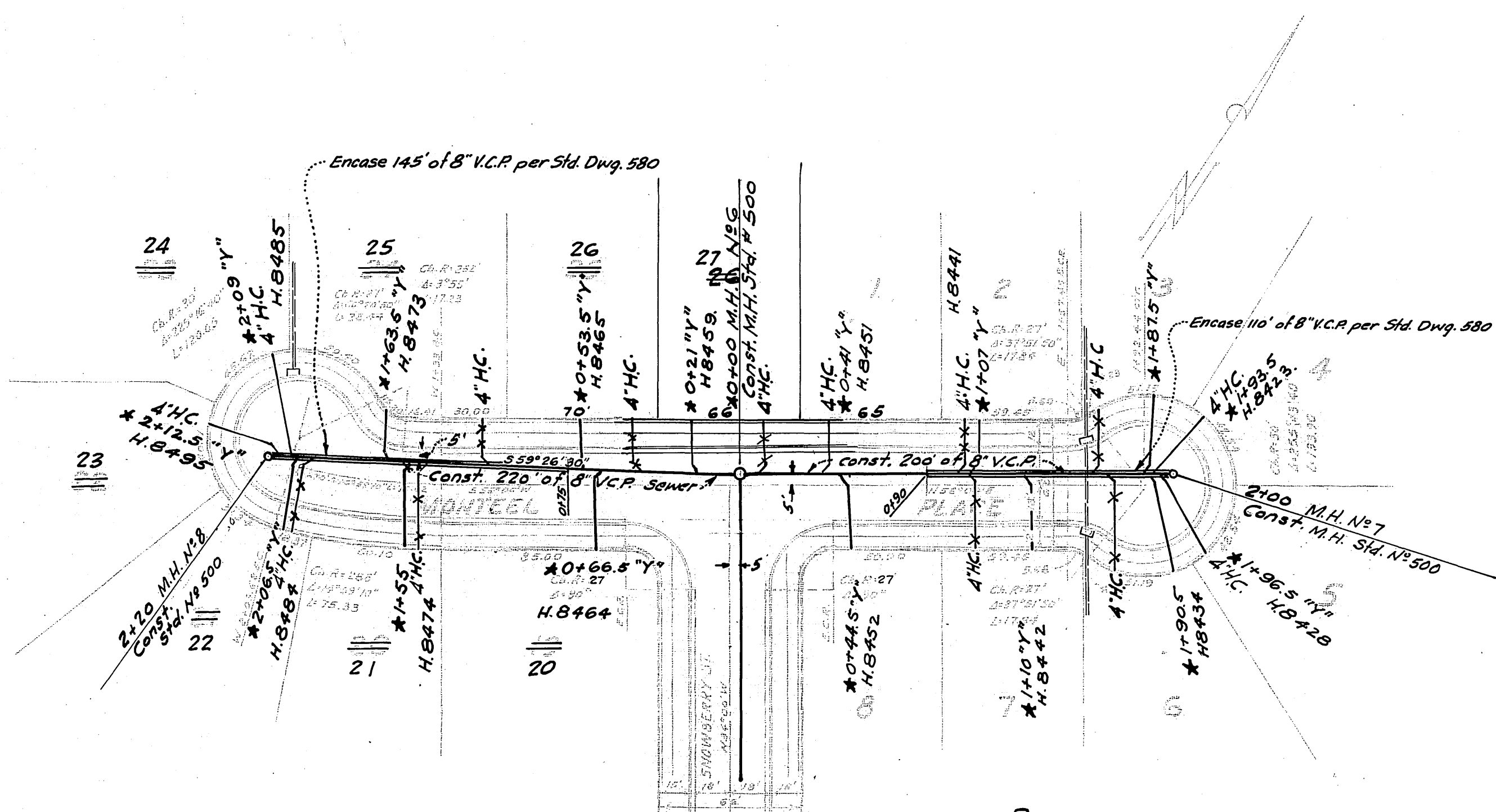


PROFILE
 Scale - 1 in = 5 ft Vert.
 1 in = 50 ft Hor.

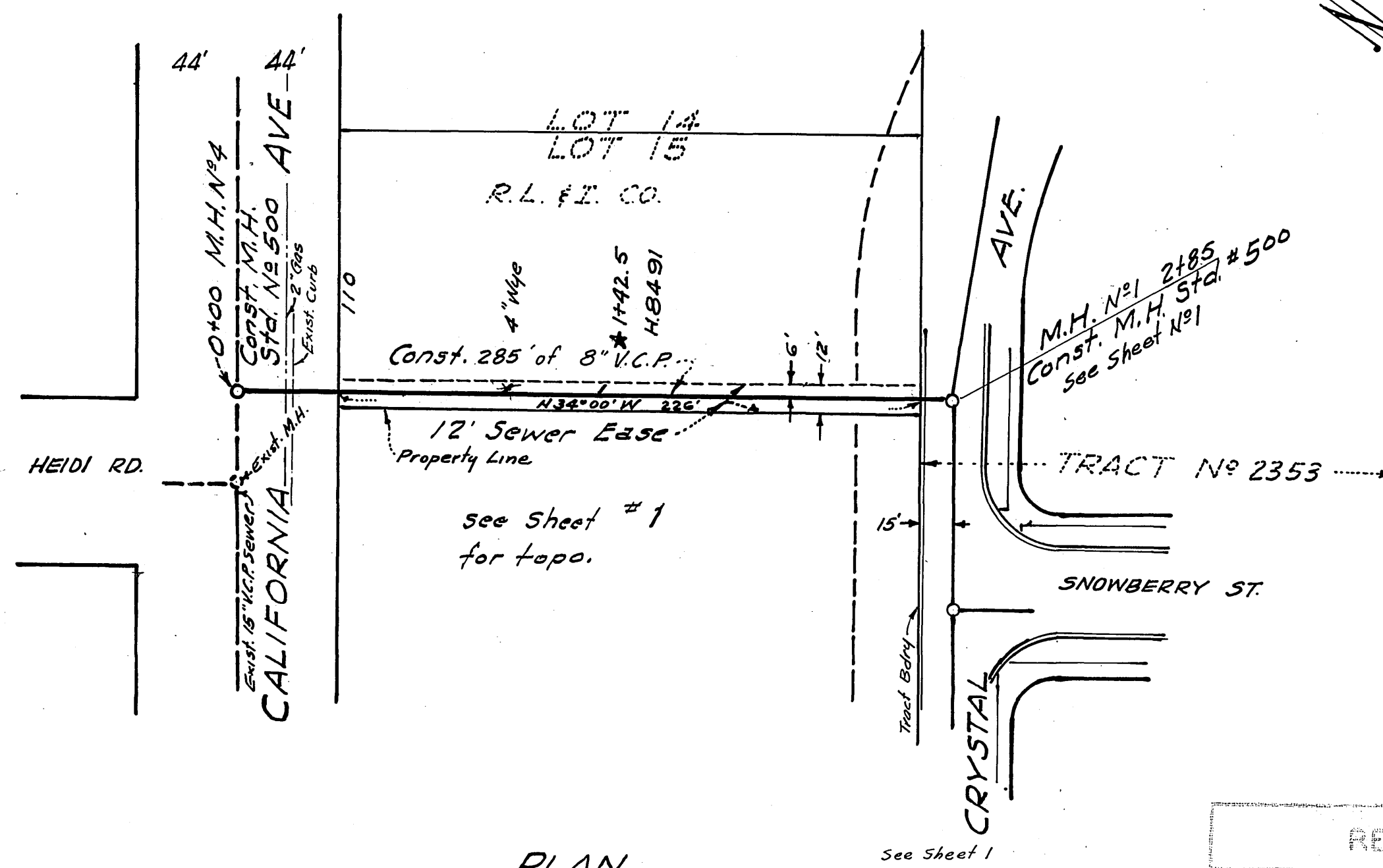


PROFILE
 1 in = 5 ft Vert.
 Scale 1 in = 50 ft Hor.

Bench. Mark: "PK" nail in lead. in curb return
 N.E. cor. Calif. Ave. & Madrona St.
 Elev. 761.93.



PLAN
 Scale - 1 in = 50 ft.



PLAN
 Scale 1 in = 50 ft.

Note:-
 General Notes See Sheet 1

REVISIONS		
MARK	DATE	DESCRIPTION

DESIGNED BY: _____ CHECKED BY: WWS
 DRAWN BY: _____
 APPROVED BY: *George O. Crawley*
 RECOMMENDED BY: *A.A. Phal*
 ASSISTANT CITY ENGINEER
 DATE: 5/1/62
 CITY OF RIVERSIDE CALIFORNIA
 DEPARTMENT OF PUBLIC WORKS
 TRACT NO. 2353
SEWER PLAN & PROFILE
MONTEEL PLACE
AND EASEMENT TO CALIF. AVE.
S-359
 SHEET 2 OF 2

* = As built. 7.19.63. G.S.