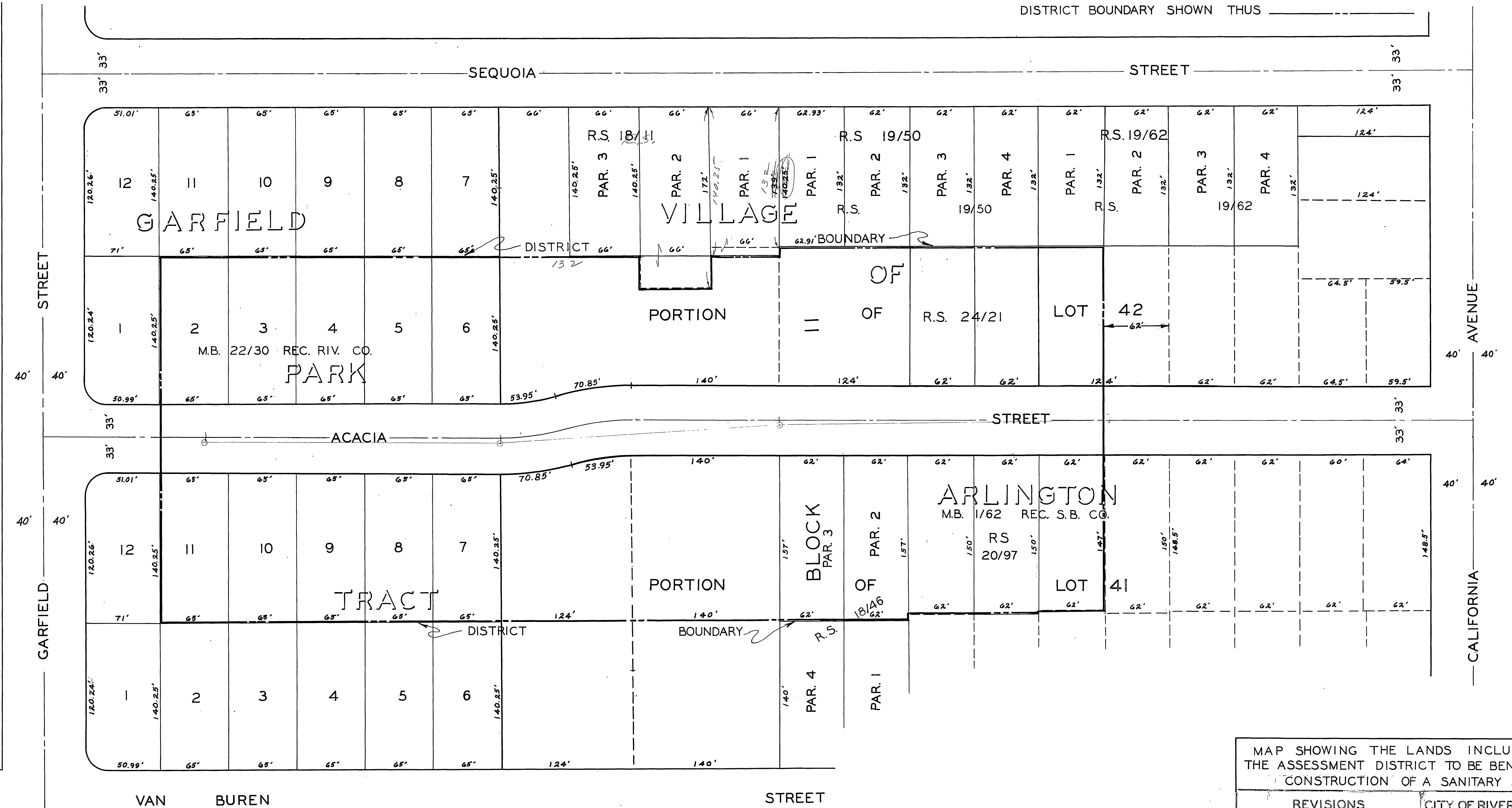


SCALE 1" = 50'

DISTRICT BOUNDARY SHOWN THUS _____



MAP SHOWING THE LANDS INCLUDED WITHIN THE ASSESSMENT DISTRICT TO BE BENEFITED BY THE CONSTRUCTION OF A SANITARY SEWER.		
REVISIONS		CITY OF RIVERSIDE CALIFORNIA DEPARTMENT OF PUBLIC WORKS
MARK	DATE	DESCRIPTION
ACACIA STREET SANITARY SEWER DISTRICT BET. CALIFORNIA AVE. AND GARFIELD ST.		
DESIGNED BY	CHECKED BY	APPROVED BY
DRAWN BY B.S.	<i>[Signature]</i>	<i>[Signature]</i>
RECOMMENDED BY	DATE	DIRECTOR OF PUBLIC WORKS
<i>[Signature]</i>	May 11 1956	<i>[Signature]</i>
S-35A		SHEET 1 OF 1

ASSESSMENT NO. 430

DIAGRAM

EXHIBITING ACACIA STREET SANITARY SEWER DISTRICT

IN THE CITY OF RIVERSIDE ON WHICH WORK HAS BEEN DONE UNDER THE OFFICIAL CONTRACT OF THE SUPERINTENDENT OF STREETS OF SAID CITY WITH ELMER W. FUNKHOUSER DATED SEPT. 24, 1956 FOR THE CONSTRUCTION OF A SANITARY SEWER AND APPURTENANCES BETWEEN CALIFORNIA AVE. AND GARFIELD ST. AS IS MORE PARTICULARLY DESCRIBED IN SAID CONTRACT TO WHICH REFERENCE IS HEREBY MADE FOR FURTHER PARTICULARS; SAID DIAGRAM ALSO SHOWS THE RELATIVE LOCATION OF EACH LOT PORTION OF LOT PIECE OR PARCEL OF LAND ASSESSED FOR THE WORK DONE NUMBERED IN CIRCLES TO CORRESPOND TO THE RED INK NUMBERS IN THE ASSESSMENT

HEREIN FIGURES NEXT TO PROPERTY LINES SHOW LENGTH OF SAID LINES IN FEET. THE MARK (') MEANS FEET. PROPERTY LINES THAT DIFFER FROM THE RECORDED SUBDIVISIONS ARE SHOWN BY BROKEN LINES. THE DISTRICT BENEFITED IS BOUNDED BY A HEAVY DASHED LINE

PROPERTY COVERED BY THIS ASSESSMENT IS SHOWN ON THE FOLLOWING RECORDED MAPS:

VILLAGE OF ARLINGTON M.B. 1/62 REC. S.B. CO.
GARFIELD PARK TRACT M.B. 22/30 REC. RIV. CO.

HEREIN THE LEGEND OF THE DIFFERENT KINDS OF WORK PERFORMED IS SHOWN AS FOLLOWS:

SEWER MAIN AND WYES
.. .. HO. CONN. 
.. .. MANHOLES 

CITY ENGINEER OF THE CITY OF RIVERSIDE
THE FOLLOWING IS A STATEMENT OF AMOUNTS OF DIFFERENT KINDS OF WORK DONE BY ELMER W. FUNKHOUSER UNDER CONTRACT DATED SEPT. 24 1956 PURSUANT TO RESOLUTION OF INTENTION NO. 7298 ADOPTED BY THE CITY COUNCIL OF THE CITY OF RIVERSIDE ON THE 3RD DAY OF JULY 1956

845.90 LIN. FT. 8" VIT. CLAY PIPE SEWER INCL. WYE BRANCHES
830.70 " " 4" " " " " HO. CONN.
3 STD. MANHOLES

AT SAID CITY OF RIVERSIDE THIS IITH DAY OF NOVEMBER 1956

STREET SUPERINTENDENT OF THE CITY OF RIVERSIDE

I HEREBY CERTIFY THAT THE ABOVE WORK WAS DONE IN ACCORDANCE WITH LINES AND GRADES FURNISHED BY ME AND THAT THE DIAGRAM OF THE ASSESSMENT DISTRICT FOR THE SAME IS CORRECT.

CITY ENGINEER OF THE CITY OF RIVERSIDE

RECORDED AT 10:30 O'CLOCK A M THIS 23RD DAY OF JANUARY 1957

SUPERINTENDENT OF STREETS OF THE CITY OF RIVERSIDE

ASSESSMENT NO. 430

DIAGRAM

EXHIBITING ACACIA STREET SANITARY SEWER DISTRICT

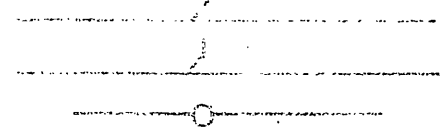
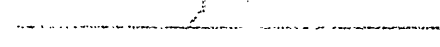
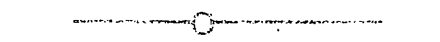
IN THE CITY OF RIVERSIDE ON WHICH WORK HAS BEEN DONE UNDER THE OFFICIAL CONTRACT OF THE SUPERINTENDENT OF STREETS OF SAID CITY WITH ELMER W. FUNKHOUSER DATED SEPT. 24, 1956 FOR THE CONSTRUCTION OF A SANITARY SEWER AND APPURTENANCES BETWEEN CALIFORNIA AVE AND GARFIELD ST. AS IS MORE PARTICULARLY DESCRIBED IN SAID CONTRACT TO WHICH REFERENCE IS HEREBY MADE FOR FURTHER PARTICULARS; SAID DIAGRAM ALSO SHOWS THE RELATIVE LOCATION OF EACH LOT PORTION OF LOT PIECE OR PARCEL OF LAND ASSESSED FOR THE WORK DONE NUMBERED IN CIRCLES TO CORRESPOND TO THE RED INK NUMBERS IN THE ASSESSMENT

HEREIN FIGURES NEXT TO PROPERTY LINES SHOW LENGTH OF SAID LINES IN FEET. THE MARK (') MEANS FEET. PROPERTY LINES THAT DIFFER FROM THE RECORDED SUBDIVISIONS ARE SHOWN BY BROKEN LINES. THE DISTRICT BENEFITED IS BOUNDED BY A HEAVY DASHED LINE

PROPERTY COVERED BY THIS ASSESSMENT IS SHOWN ON THE FOLLOWING RECORDED MAPS:

VILLAGE OF ARLINGTON M.B. 1/62 REC. S.B. CO.
GARFIELD PARK TRACT M.B. 22/30 REC. RIV. CO.

HEREIN THE LEGEND OF THE DIFFERENT KINDS OF WORK PERFORMED IS SHOWN AS FOLLOWS:

SEWER MAIN AND WYES 
HO. CONN. 
MANHOLES 

CITY ENGINEER OF THE CITY OF RIVERSIDE
THE FOLLOWING IS A STATEMENT OF AMOUNTS OF DIFFERENT KINDS OF WORK DONE BY ELMER W. FUNKHOUSER UNDER CONTRACT DATED SEPT. 24 1956 PURSUANT TO RESOLUTION OF INTENTION NO. 7298 ADOPTED BY THE CITY COUNCIL OF THE CITY OF RIVERSIDE ON THE 3RD DAY OF JULY 1956

845.90	LIN. FT. 8" VIT. CLAY PIPE SEWER INCL. WYE BRANCHES
830.70	HO. CONN.
3	STD. MANHOLES

AT SAID CITY OF RIVERSIDE THIS 11TH DAY OF NOVEMBER 1956

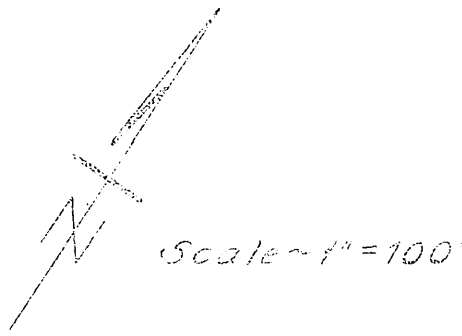
STREET SUPERINTENDENT OF THE CITY OF RIVERSIDE

I HEREBY CERTIFY THAT THE ABOVE WORK WAS DONE IN ACCORDANCE WITH LINES AND GRADES FURNISHED BY ME AND THAT THE DIAGRAM OF THE ASSESSMENT DISTRICT FOR THE SAME IS CORRECT.

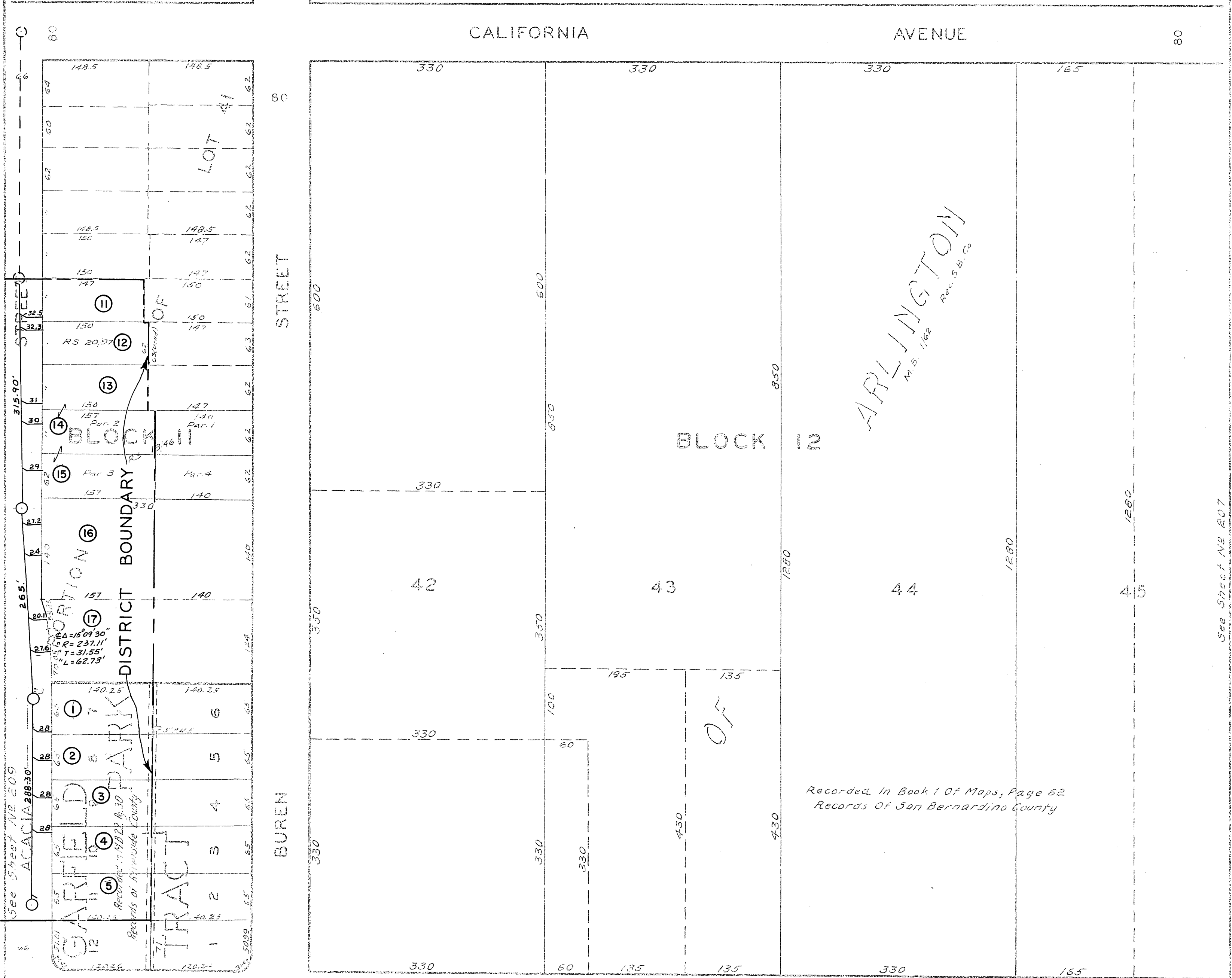
CITY ENGINEER OF THE CITY OF RIVERSIDE

RECORDED AT 10:30 O'CLOCK A.M. THIS 23RD DAY OF JANUARY 1957

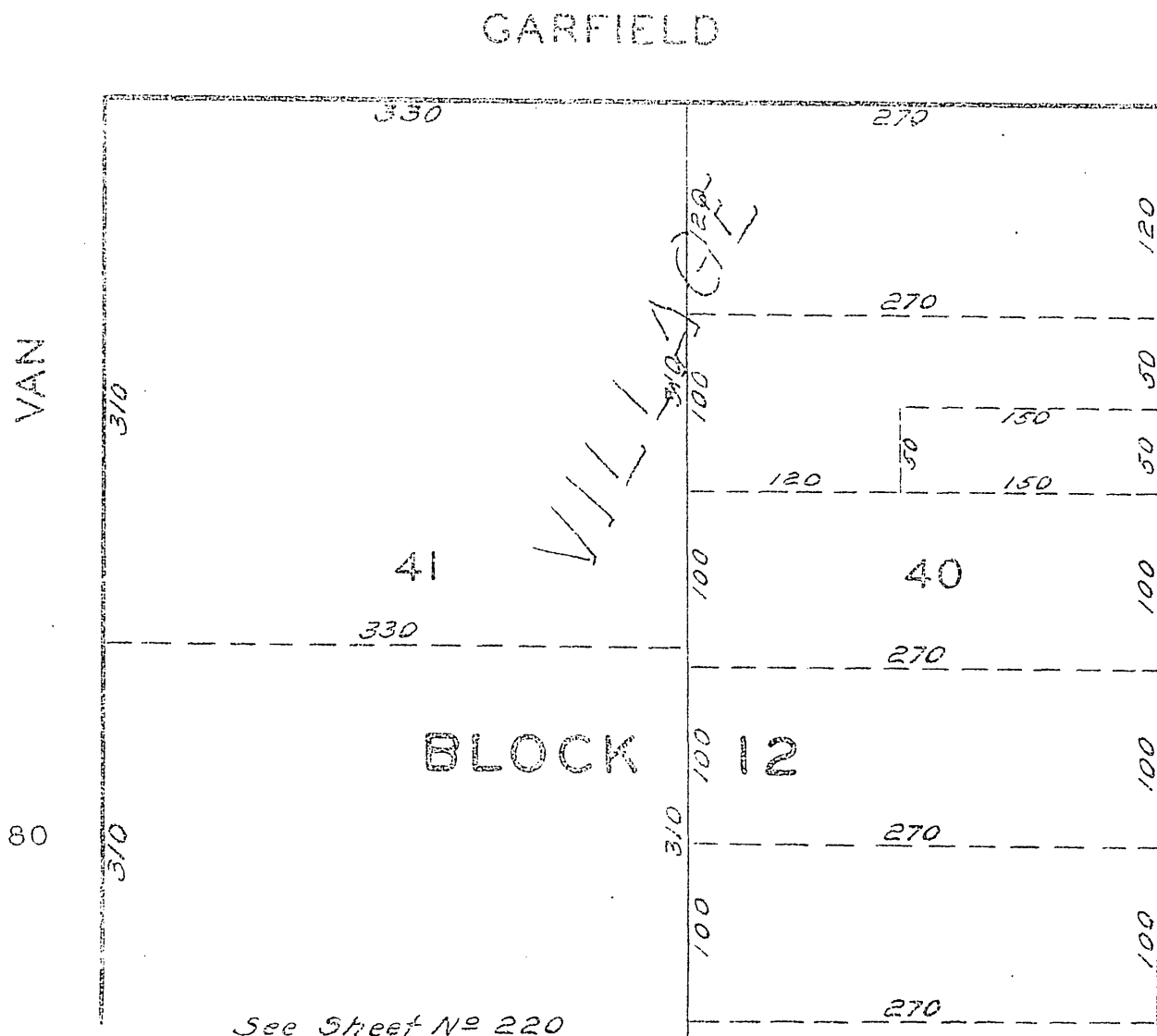
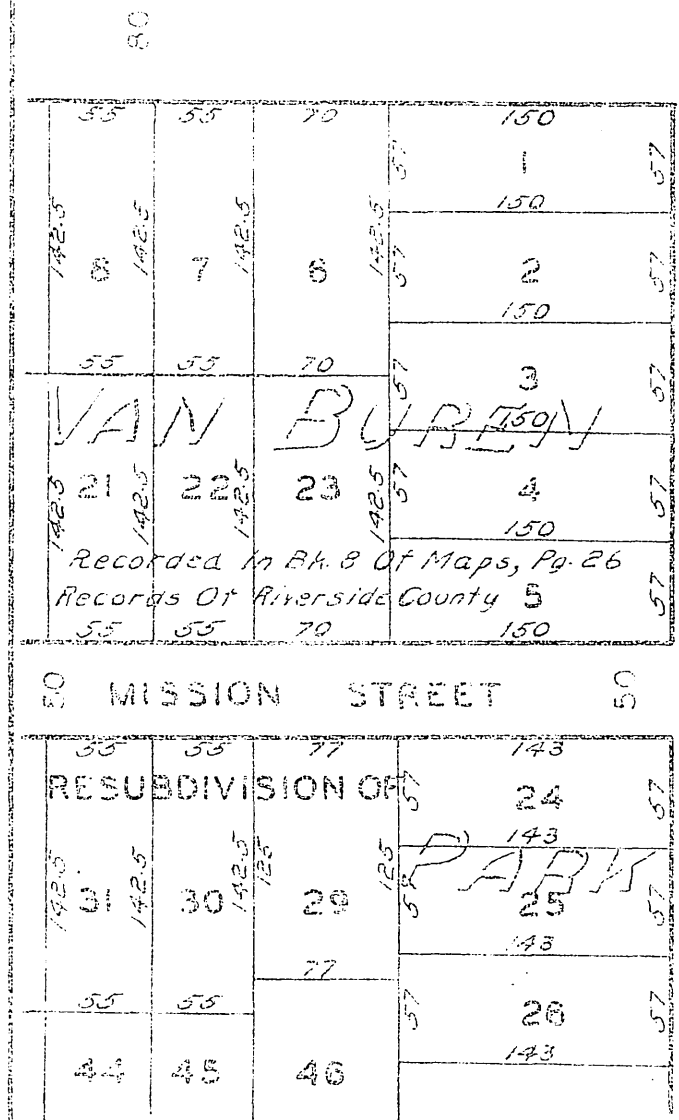
SUPERINTENDENT OF STREETS OF THE CITY OF RIVERSIDE



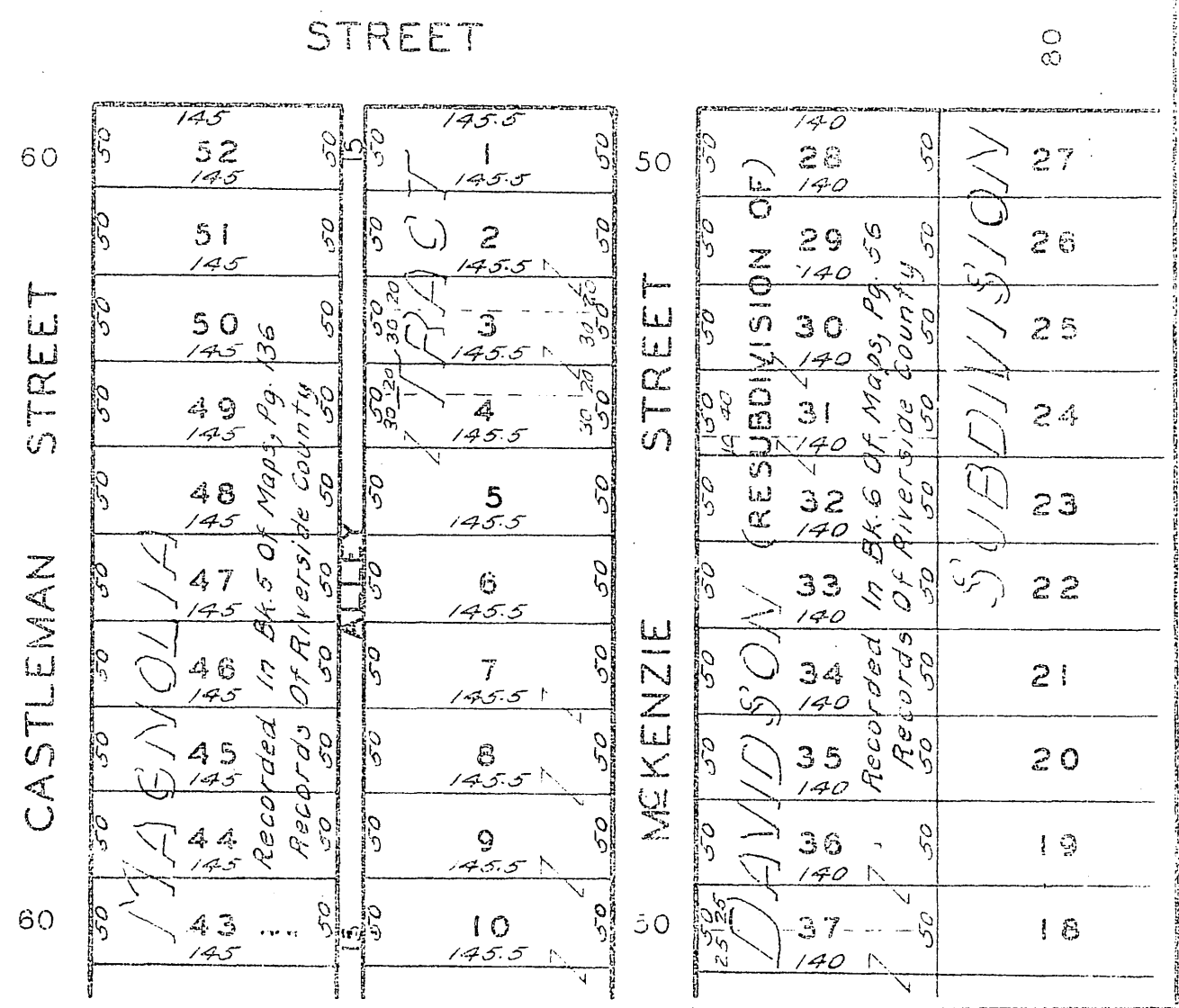
See Sheet No 197

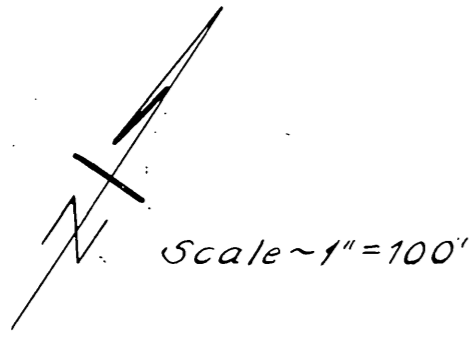


See Sheet No 207



See Sheet No 220



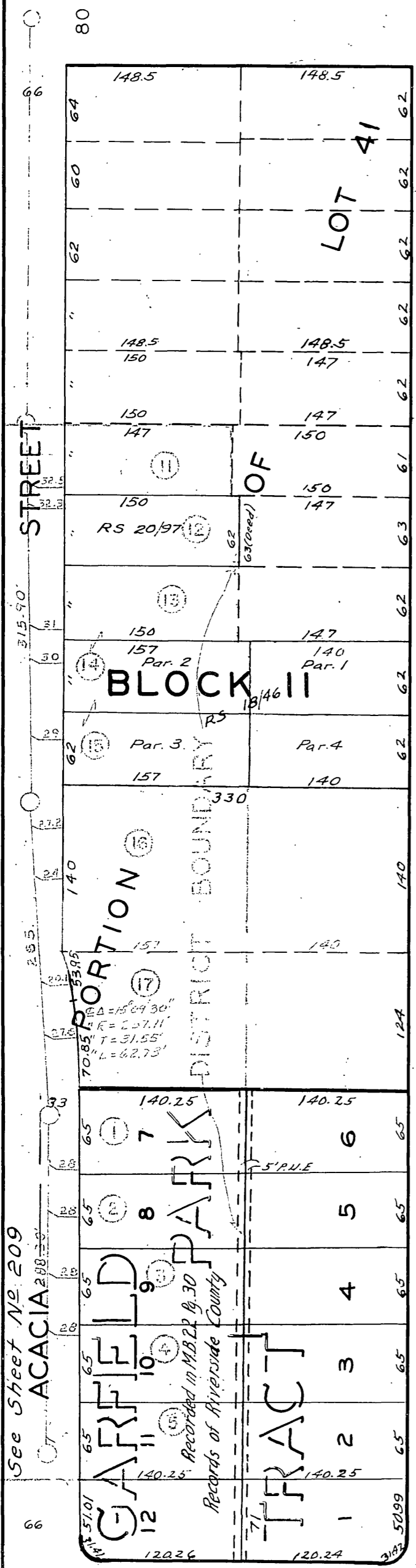


See Sheet No 197

CALIFORNIA

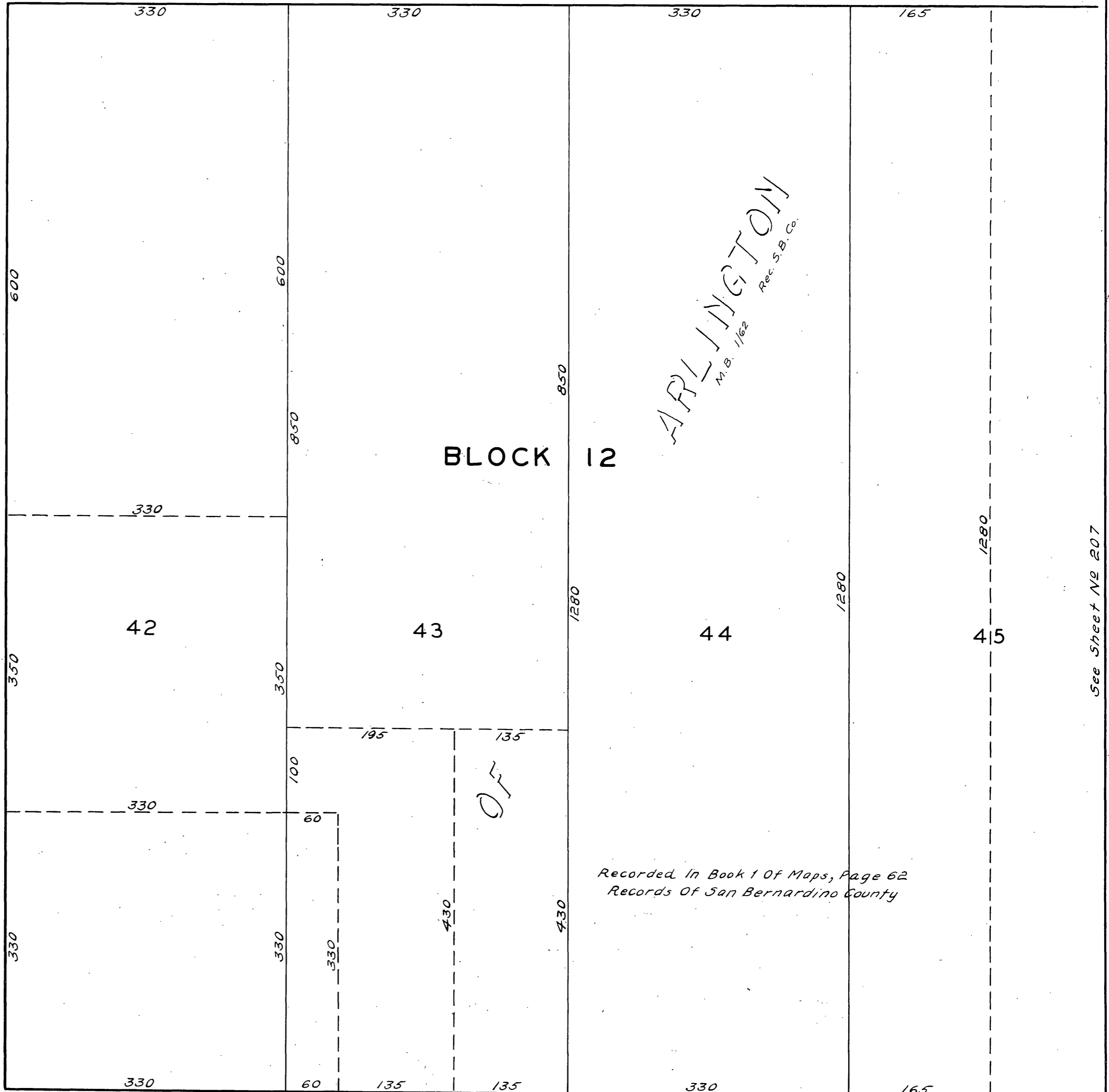
AVENUE

80



BUREN STREET

BUREN

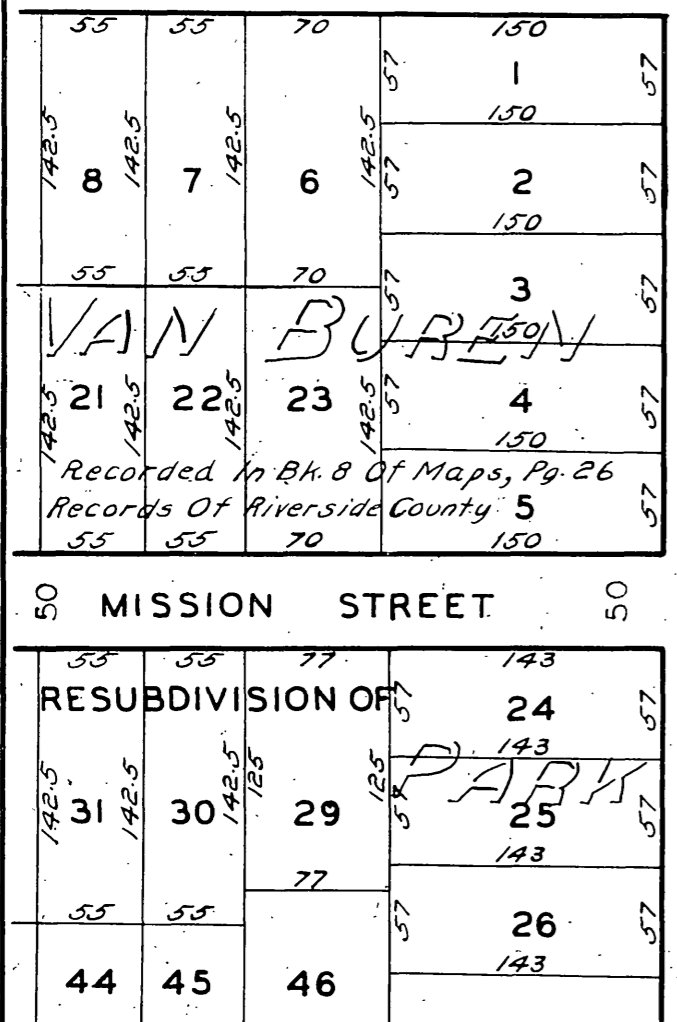


Recorded in Book 1 of Maps, Page 62
Records of San Bernardino County

GARFIELD

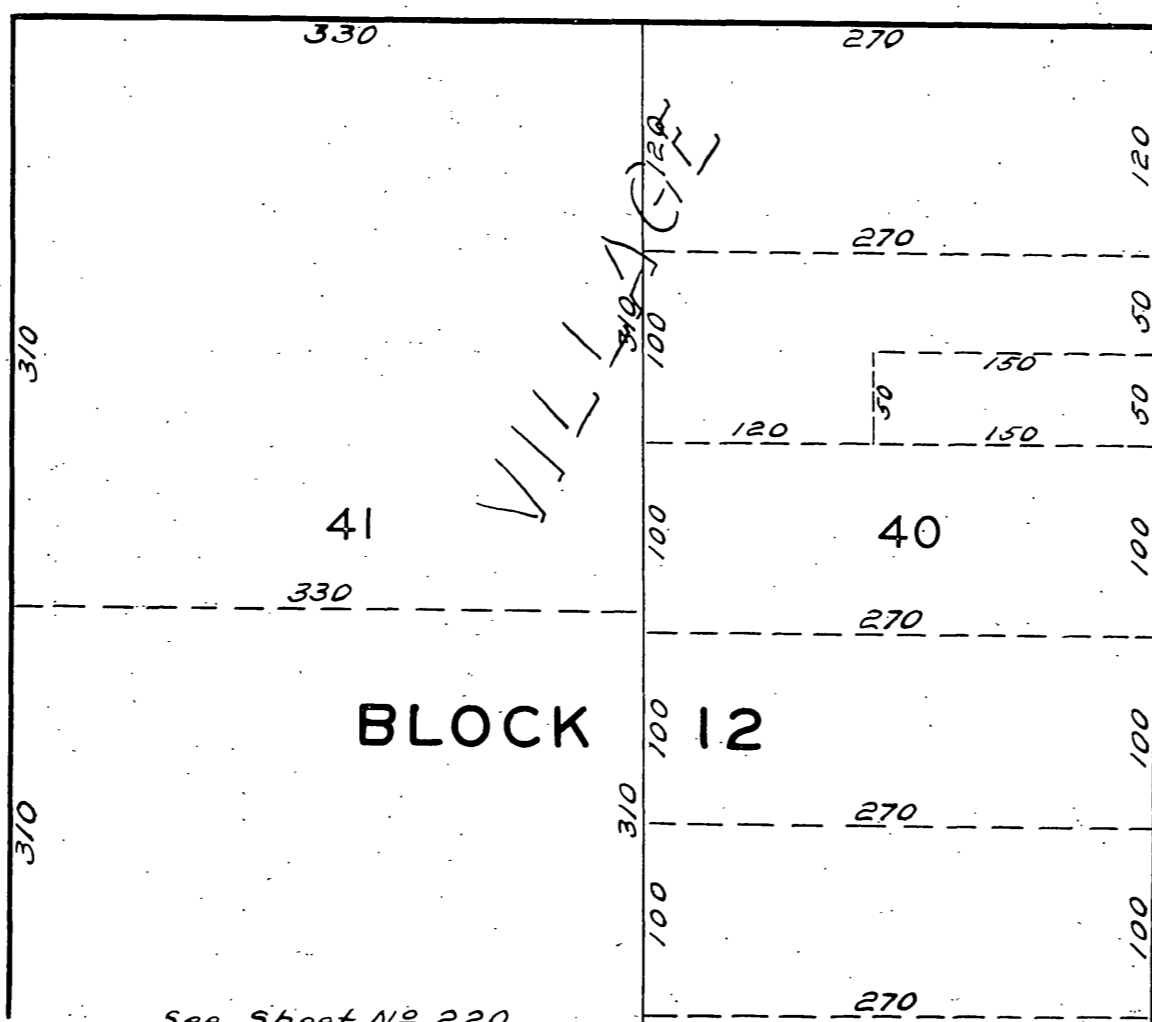
STREET

80



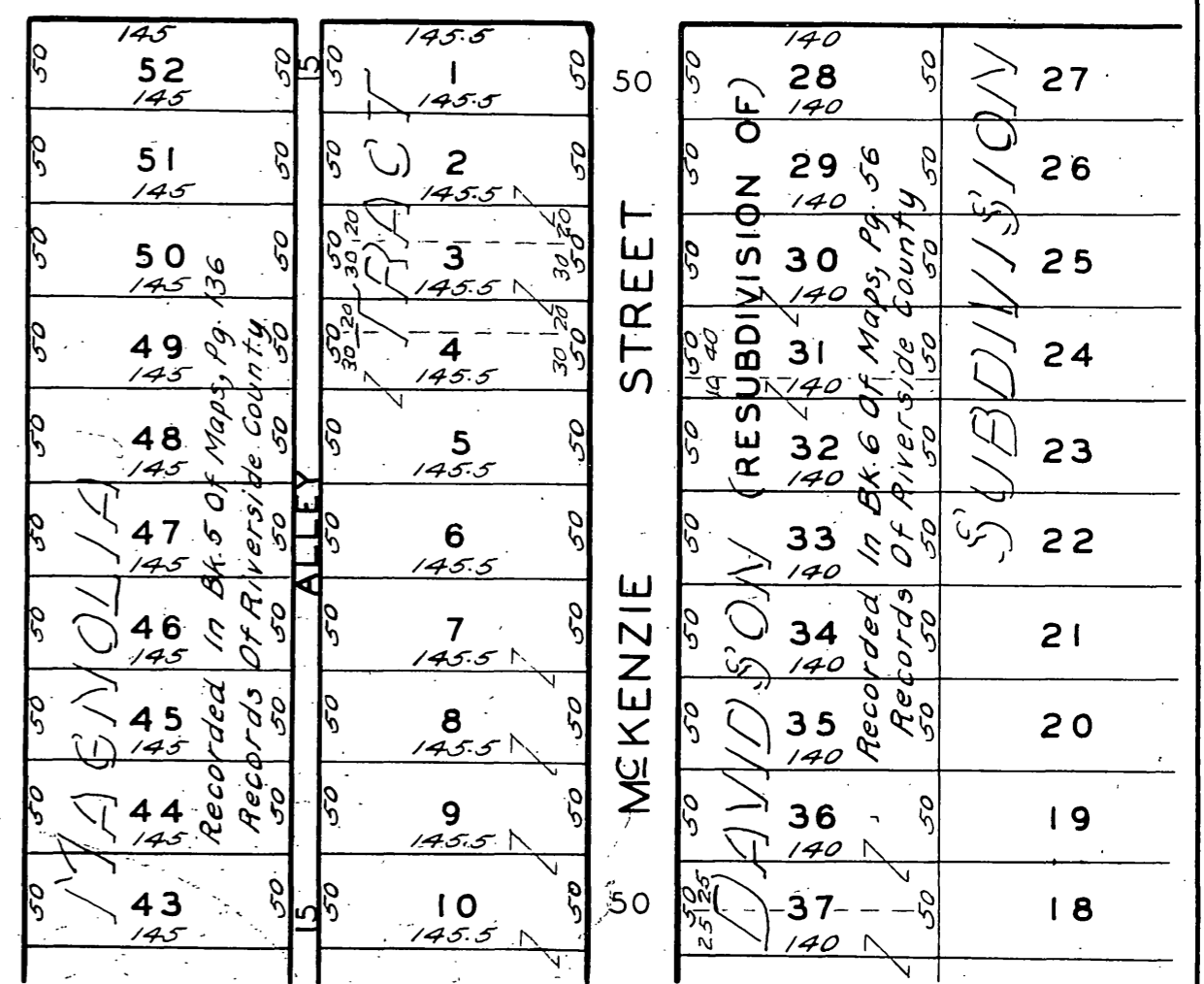
VAN

80



See Sheet No 220

CASTLEMAN STREET



MEKENZIE STREET

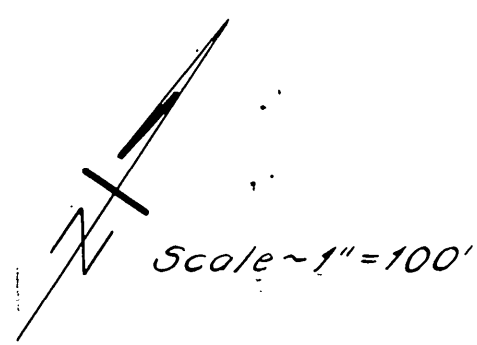
MEKENZIE

Scale ~ 1" = 100'

See Sheet No 197

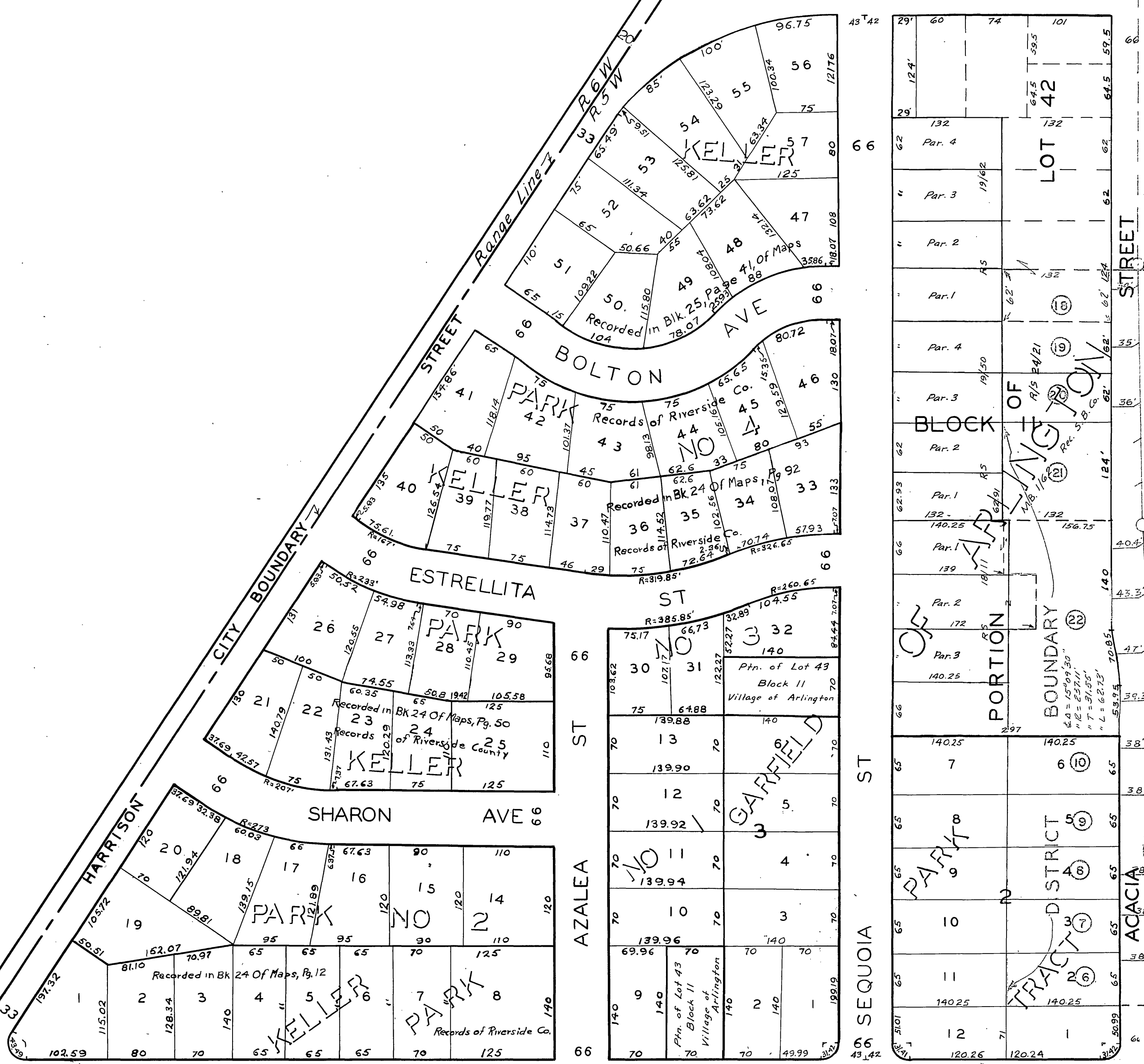


See Sheet No 221



See Sheet No 197

CALIFORNIA AVENUE



COUNTY HOSPITAL

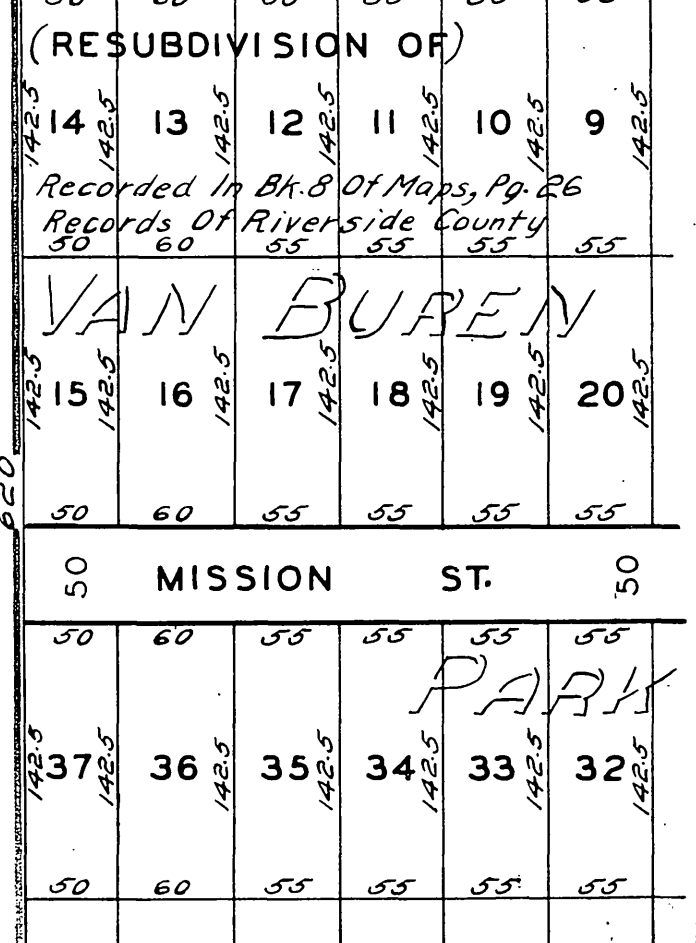
PUBLIC PROPERTY

BLOCK 11

VILLAGE

LIBERTY

SCHOOL PUBLIC PROPERTY



See Sheet No 221