

B.M. = "X" ON F.H.S.E. COR. DENTON STREET AND GROVE AVE. ELEV. 900.57
 F.B. 520/1 - 5/69-71
 SCALES: H.O.R. 1" = 50'
 VERT. 1" = 5'

NOTES:

- 1 The Contractor shall comply with all applicable portions of Standard Specifications No. 461
- 2 Pipe shall be bedded per Std. Dwg. #452 Case II
- 3 Pavement Replacement shall be 2 1/2" A.C. and Seal Coat over 6" I.B.M.
- 4 Exact location of wyes to be determined in the field.
- 5 Engineer may make minor adjustments in driveway location and grades in the field.

ESTIMATED QUANTITIES

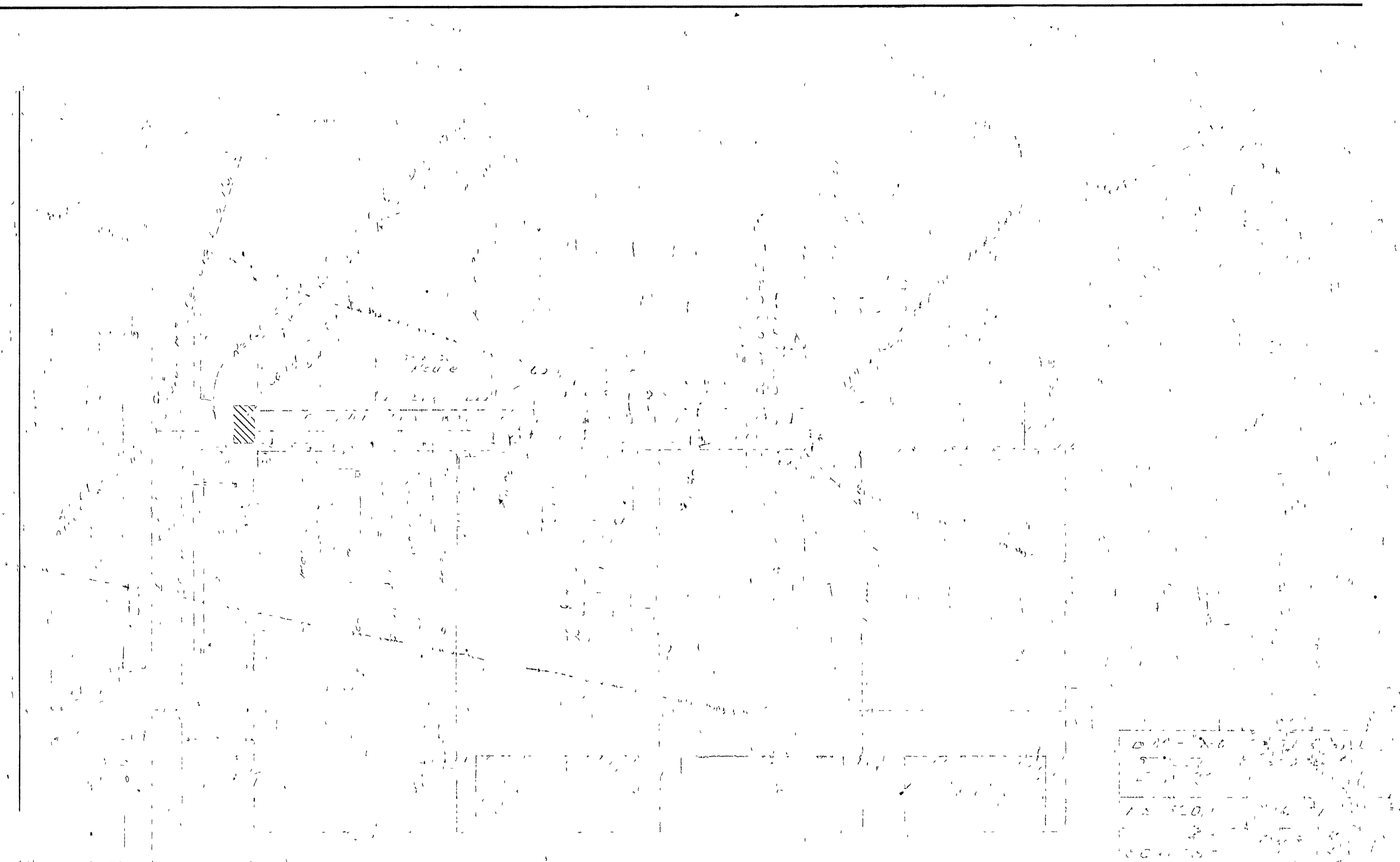
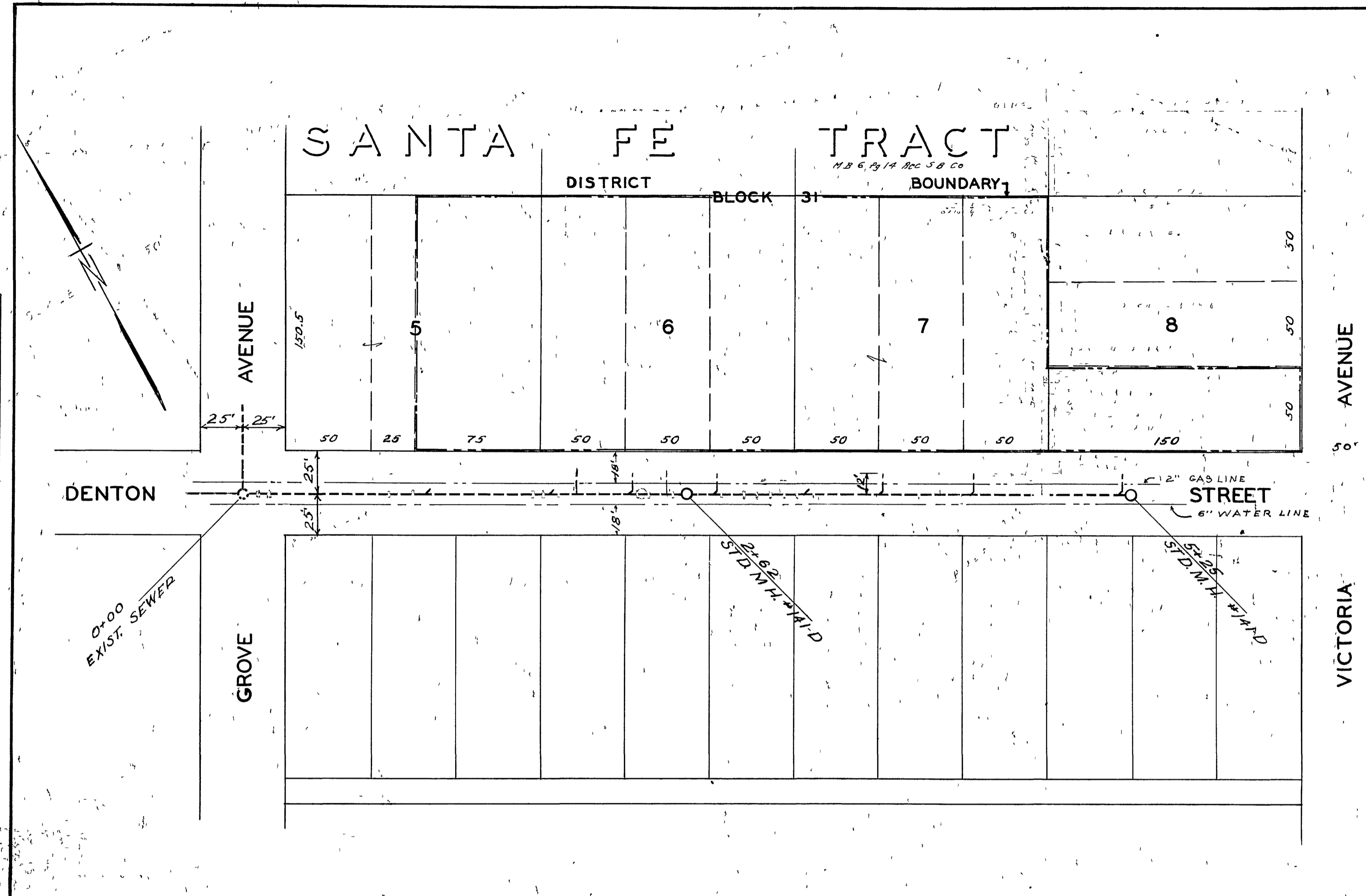
6" V.C.P.	140 L.F.
M.H. (Std. No. 500)	1 Each
6" x 4" Wyes	2 Each
Pavement Replacement	55 S.F.
Reconstruct D/W Approach	88 S.F.
1/2" Side Walk	50 S.F.
2 1/2" A.C. D/W	880 S.F.
K.W. Hdr.	228 L.F.
4" V.C.P. Lateral	70 L.F.
Clean out	1 Each

11-6-62 Revised Limits of Const. & added C.O.
 1/2" Wyes OK
 2-1-63 'As Built' to 1-40-63 Ball

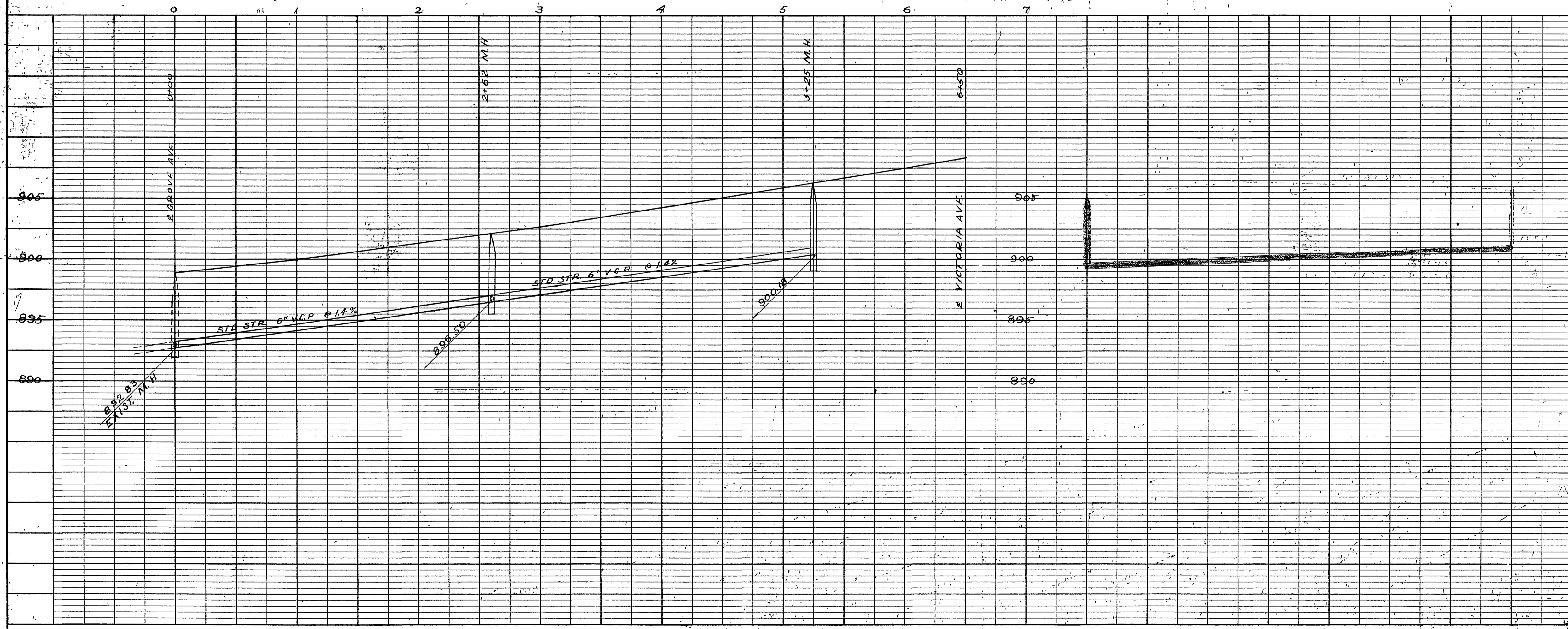
DENTON ST. SEWER EXT.

W.R.C.
 A. P. I. Seal
 S-360
 11-62
 ACCT. No. 101E

PLAN	REVISIONS	DATE
DESIGNED	BY	
PLOTTED		
NOTE BOOK ALIGNMENT CHECKED		
RT OF WAY CHECKED		
NO		



PROFILE	REVISIONS	DATE
SURVEYED	BY	
PLOTTED		
GRADES CHECKED		
STRUCTURE NOTING CHKD		
NO		



REVISIONS			CITY OF RIVERSIDE CALIFORNIA DEPARTMENT OF PUBLIC WORKS
MARK	DATE	DESCRIPTION	

DESIGNED BY	CHECKED BY	APPROVED BY
DRAWN BY		DIRECTOR OF PUBLIC WORKS
RECOMMENDED BY	ASSISTANT CITY ENGINEER	DATE

S-360
SHEET 1 OF 1