

ESTIMATE OF QUANTITIES

- 3441' - 8" V.C.P.
- 1698' - 4" V.P.
- 53 - WYES
- 13 - MANHOLES
- 2 - CLEANOUTS

* = "As Built" 9-23-59 H. Ball
 Reimb Contr # 21

PREPARED BY ALBERTA WEBB ASSOCIATES

APPROVED BY *[Signature]* DATE May 8, 1956

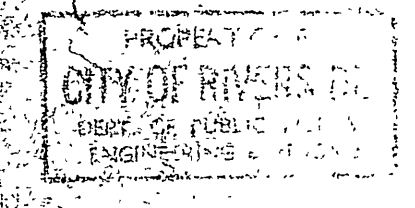
CITY OF RIVERSIDE, CALIFORNIA
 DEPARTMENT OF PUBLIC WORKS

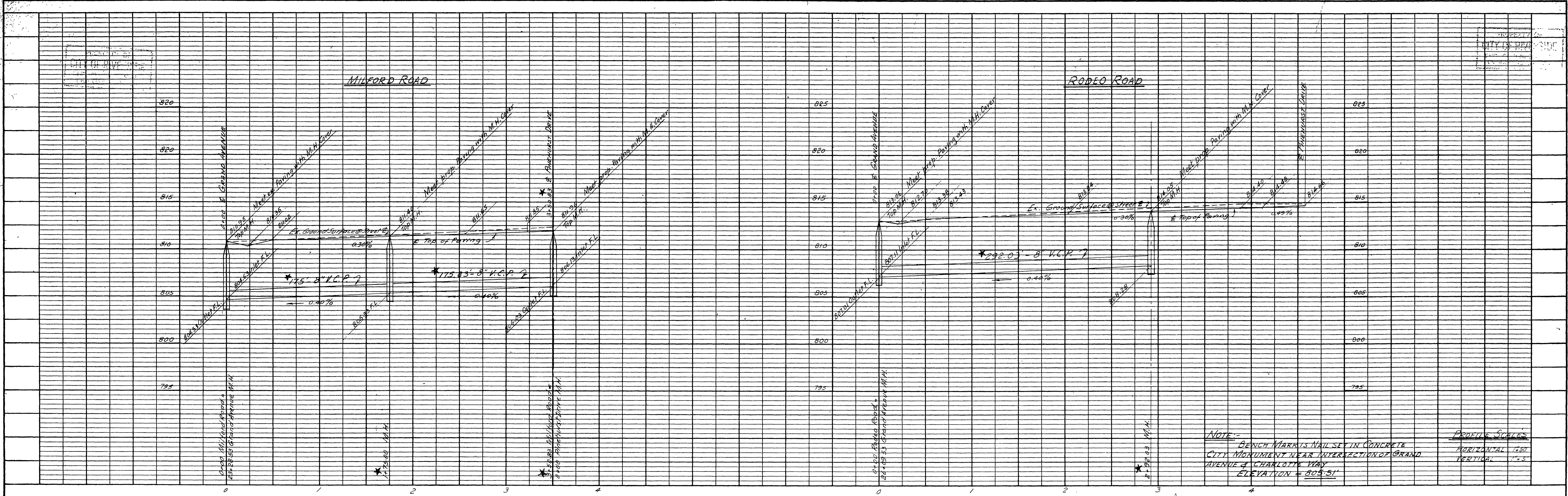
SEWER PLAN & PROFILE
 RIO VERDE TERRACE
 GRAND AVENUE

APPROVED BY *[Signature]*
 DIRECTOR OF PUBLIC WORKS

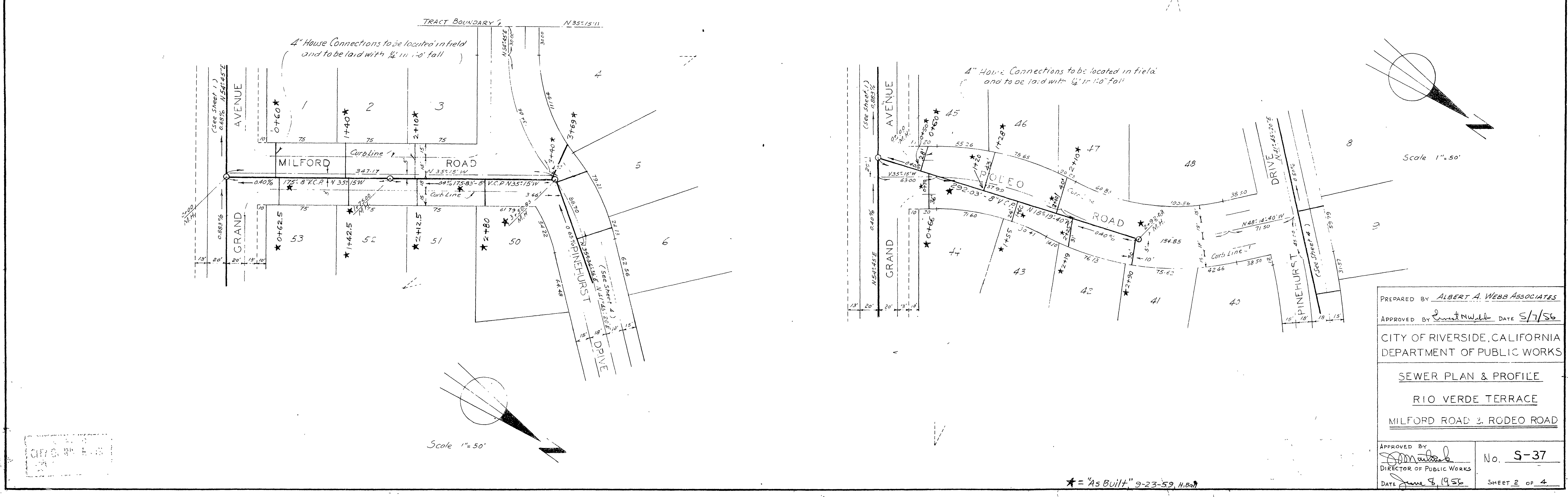
DATE June 8, 1956

No. S-37
 SHEET 1 OF 4





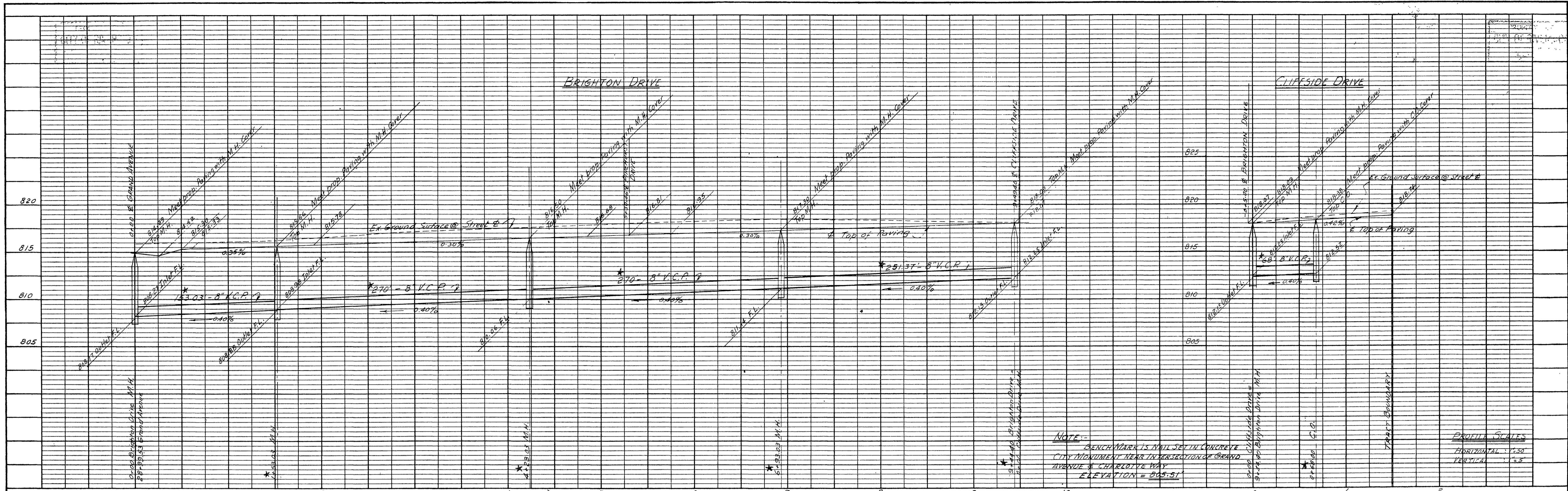
PROFILE	BY	DATE
REVISIONS		
NOTED		
GRADING CHECKED		
STRUCTURE NOTATIONS CHECKED		



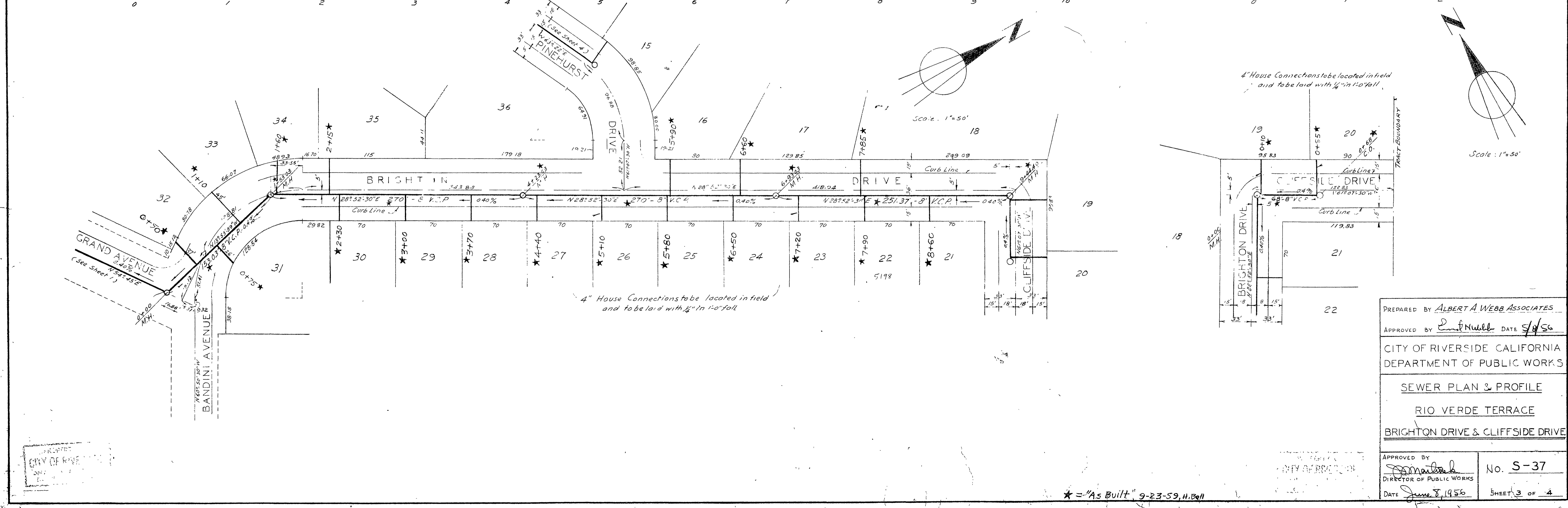
PLAN	BY	DATE
REVISIONS		
NOTED		
ALIGNMENT CHECKED		
R/O OR WAY CHECKED		

PREPARED BY ALBERT A. WEBB ASSOCIATES
 APPROVED BY *[Signature]* DATE 5/7/56
 CITY OF RIVERSIDE, CALIFORNIA
 DEPARTMENT OF PUBLIC WORKS
 SEWER PLAN & PROFILE
 RIO VERDE TERRACE
 MILFORD ROAD & RODEO ROAD
 APPROVED BY *[Signature]* No. S-37
 DIRECTOR OF PUBLIC WORKS
 DATE June 8, 1956 SHEET 2 OF 4

CITY OF RIVERSIDE



NO.	DATE	BY



NO.	DATE	BY

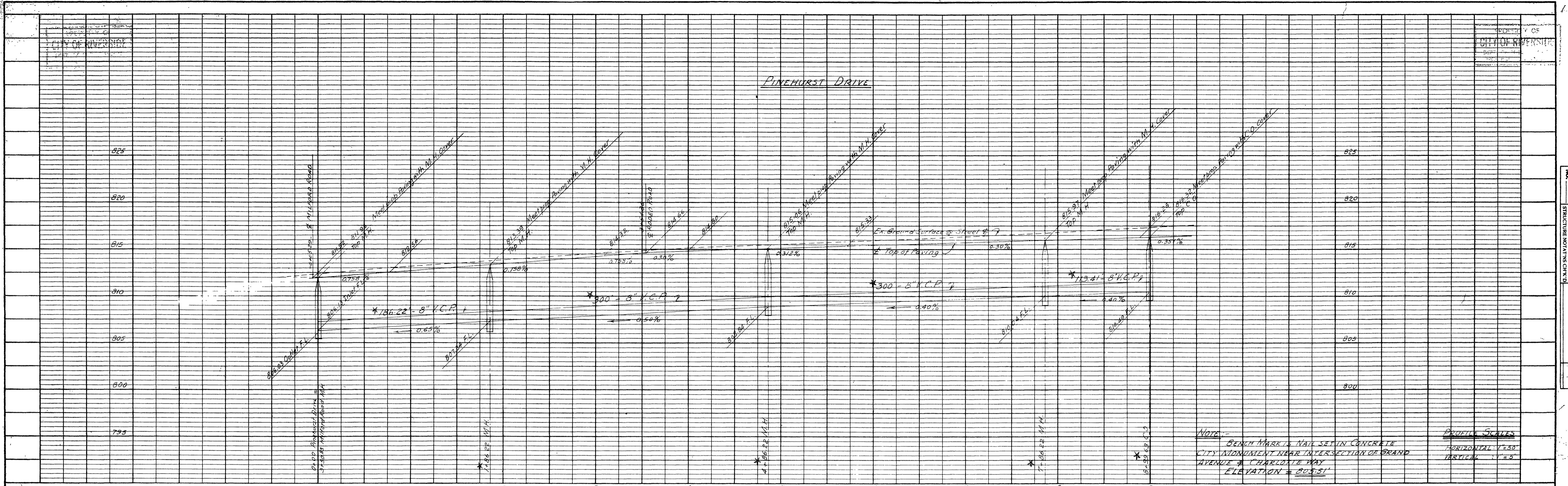
PREPARED BY ALBERT A WEBB ASSOCIATES
 APPROVED BY *[Signature]* DATE 5/15/56
 CITY OF RIVERSIDE CALIFORNIA
 DEPARTMENT OF PUBLIC WORKS

SEWER PLAN & PROFILE
RIO VERDE TERRACE
BRIGHTON DRIVE & CLIFFSIDE DRIVE

APPROVED BY *[Signature]*
 DIRECTOR OF PUBLIC WORKS
 DATE June 8, 1956

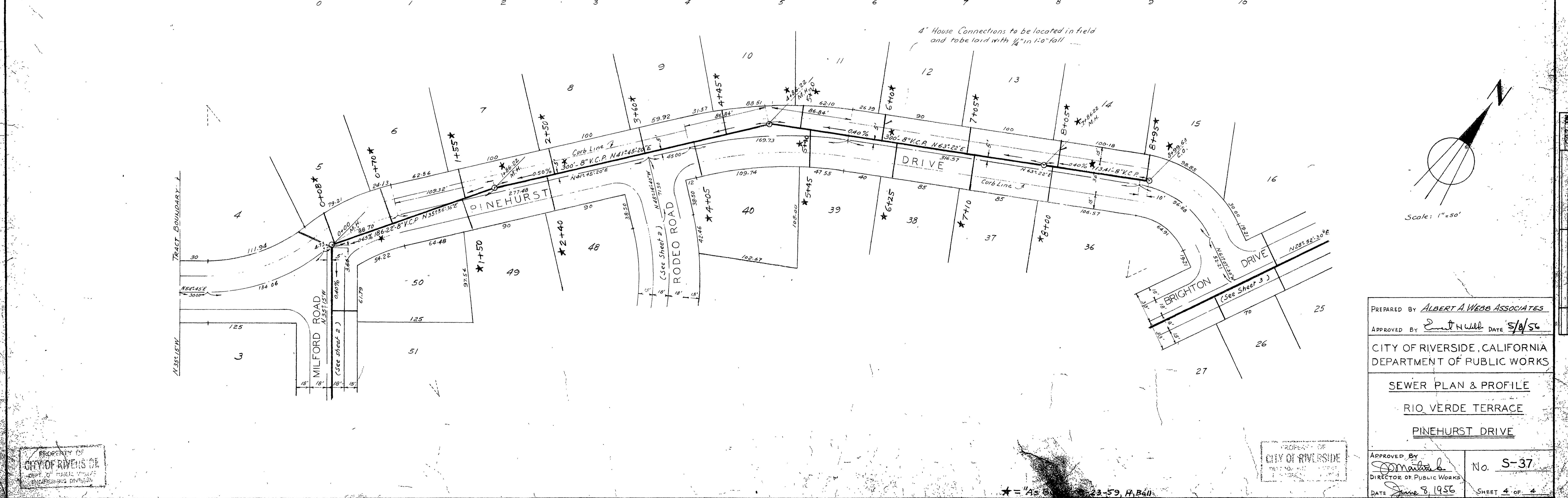
No. S-37
 SHEET 3 OF 4

* = "As Built", 9-23-59, H.B.M.



Note: BENCH MARK NAIL SET IN CONCRETE CITY MONUMENT NEAR INTERSECTION OF BRAND AVENUE & CHARLOTTE WAY ELEVATION = 805.51'

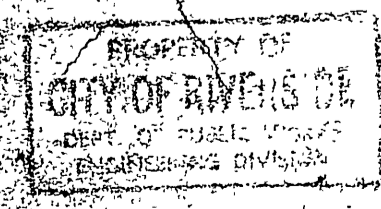
Profile Scales:
 HORIZONTAL 1" = 50'
 VERTICAL 1" = 5'



PREPARED BY ALBERT A. WEBB ASSOCIATES
 APPROVED BY [Signature] DATE 5/10/56
 CITY OF RIVERSIDE, CALIFORNIA
 DEPARTMENT OF PUBLIC WORKS
 SEWER PLAN & PROFILE
 RIO VERDE TERRACE
 PINEHURST DRIVE

APPROVED BY [Signature]
 DIRECTOR OF PUBLIC WORKS
 DATE June 8, 1956

No. S-37
 SHEET 4 OF 4



PROJECT	SEWER
PLANNED BY	ALBERT A. WEBB ASSOCIATES
DESIGNED BY	B. M. ALBERT
STRUCTURAL DRAWING BY	ALBERT A. WEBB ASSOCIATES
CHECKED BY	
DATE	

NO.	5-37
DATE	JUNE 8, 1956
BY	[Signature]
CHECKED BY	
DATE	

* = 1/4" AS SHOWN ON SHEET 33-59, H.B. 111