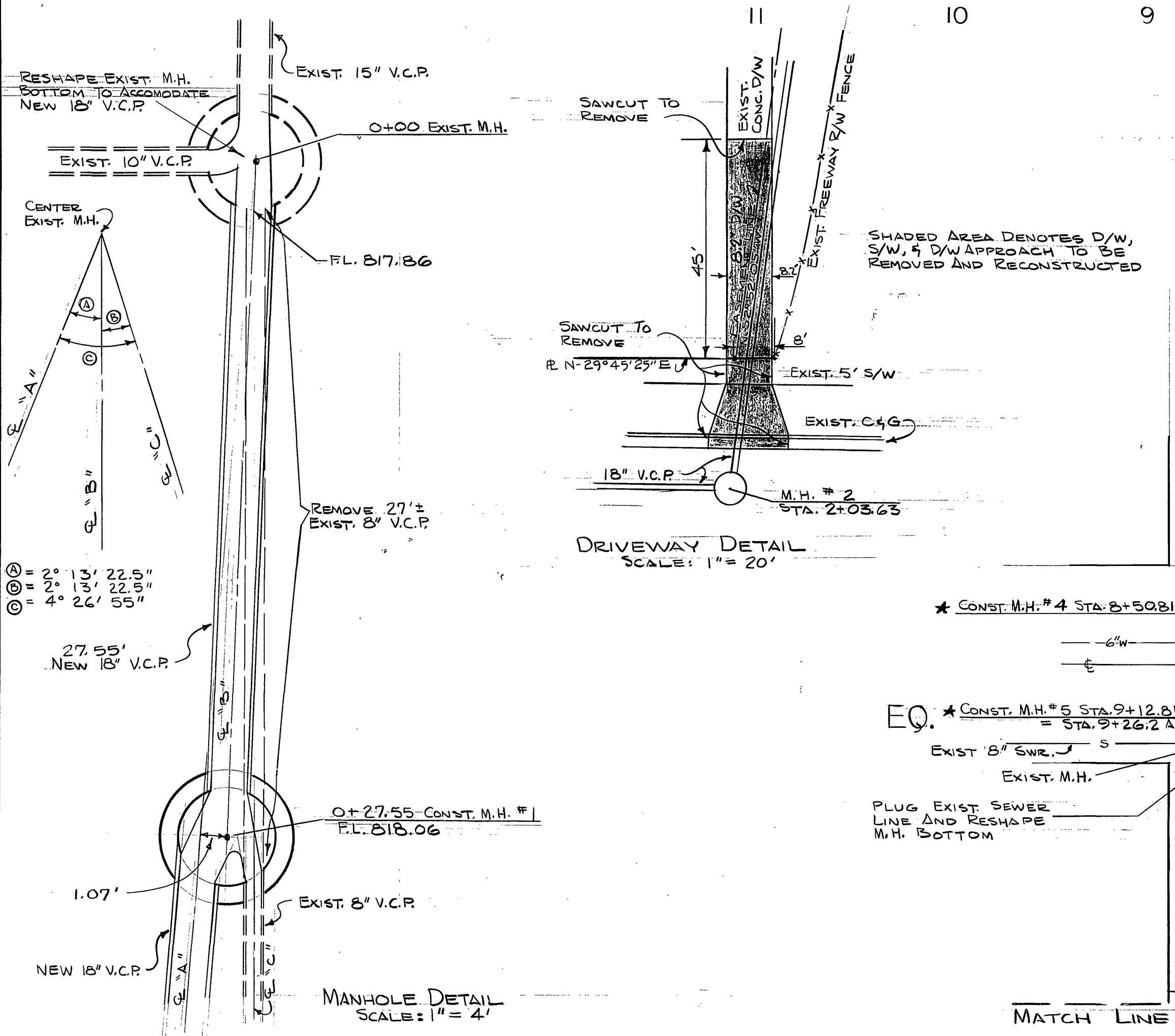


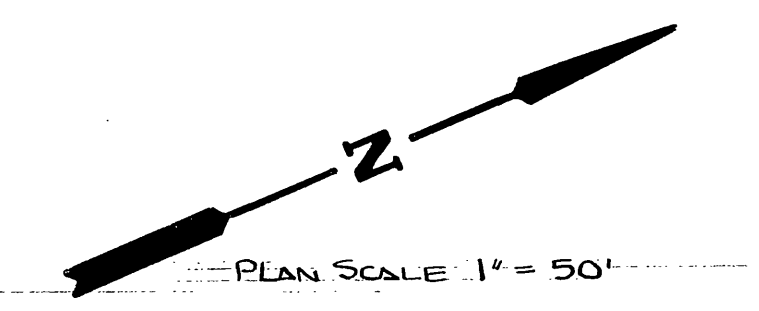
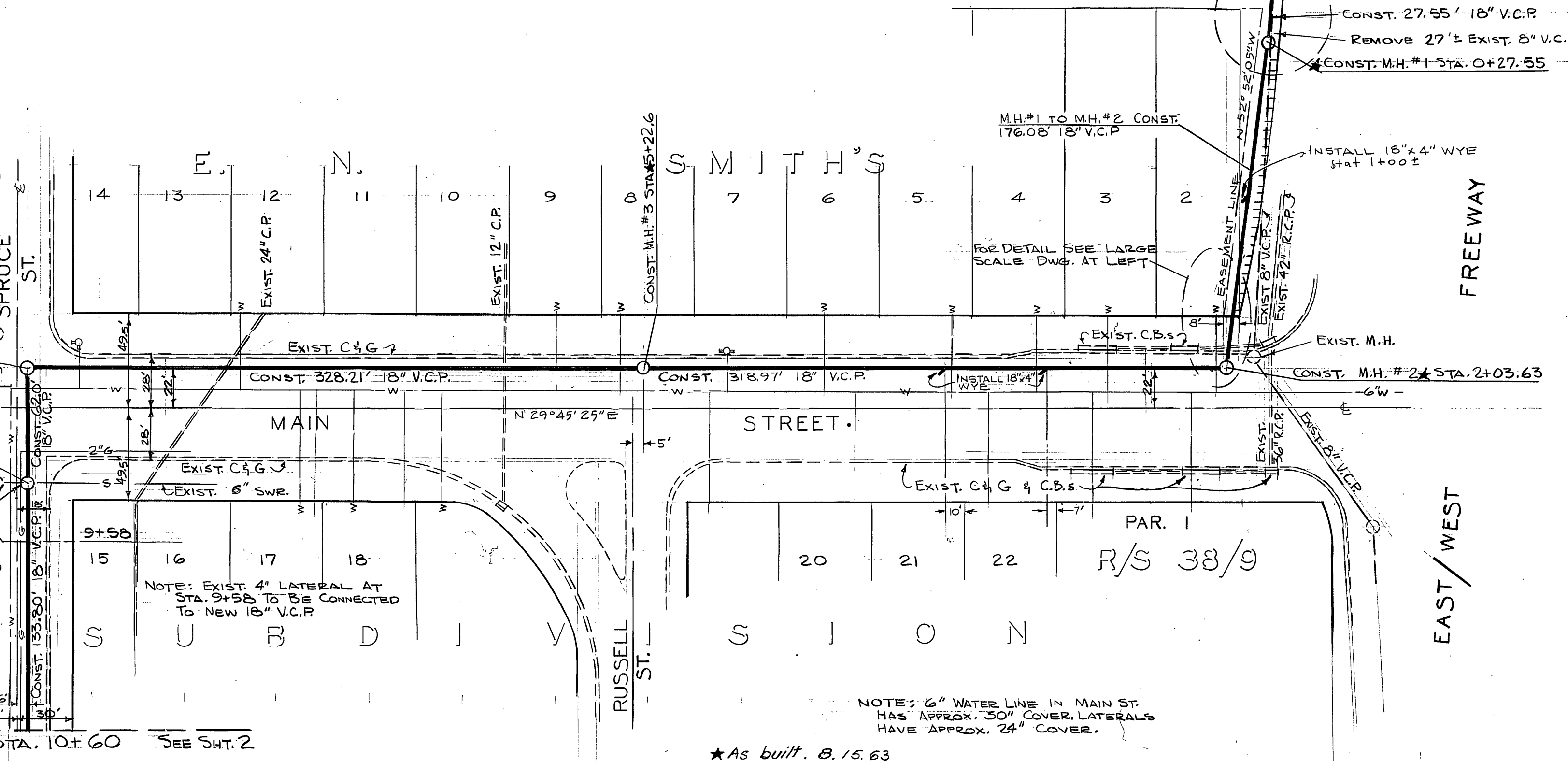
PROFILE	DATE	BY
SURVEYED		
PLANNED		
FILED		
NOTED		
NO. OF SHEETS		
STRUCTURE NOTATIONS CHNO.		

B.M. 54.1 IN WEST CURB OF MAIN ST. OPPOSITE E. OF RUSSELL ST. 830.92 FT.
 FB: 5-6/31-36
 SCALE HORIZ. 1" = 50'
 VERT. 1" = 5'

100.00
 77.55
 22.45



- GENERAL NOTES:
- ALL WORK SHALL BE DONE IN ACCORDANCE WITH STD. SPECIFICATIONS NO. 461, SPEC. PROVISIONS, AND STANDARD DRAWINGS OF THE CITY OF RIVERSIDE, DEPARTMENT OF PUBLIC WORKS.
 - 18"x4" WYES TO BE LOCATED IN THE FIELD.
 - THE EXISTENCE AND LOCATION OF ANY UNDERGROUND UTILITY PIPES AND STRUCTURES SHOWN ARE OBTAINED FROM AVAILABLE RECORDS. THE CONTRACTOR IS REQUIRED TO TAKE DUE PRECAUTIONARY MEASURES TO PROTECT THE UTILITY LINES SHOWN AND ANY OTHER UTILITY LINES NOT SHOWN ON THE PLANS.

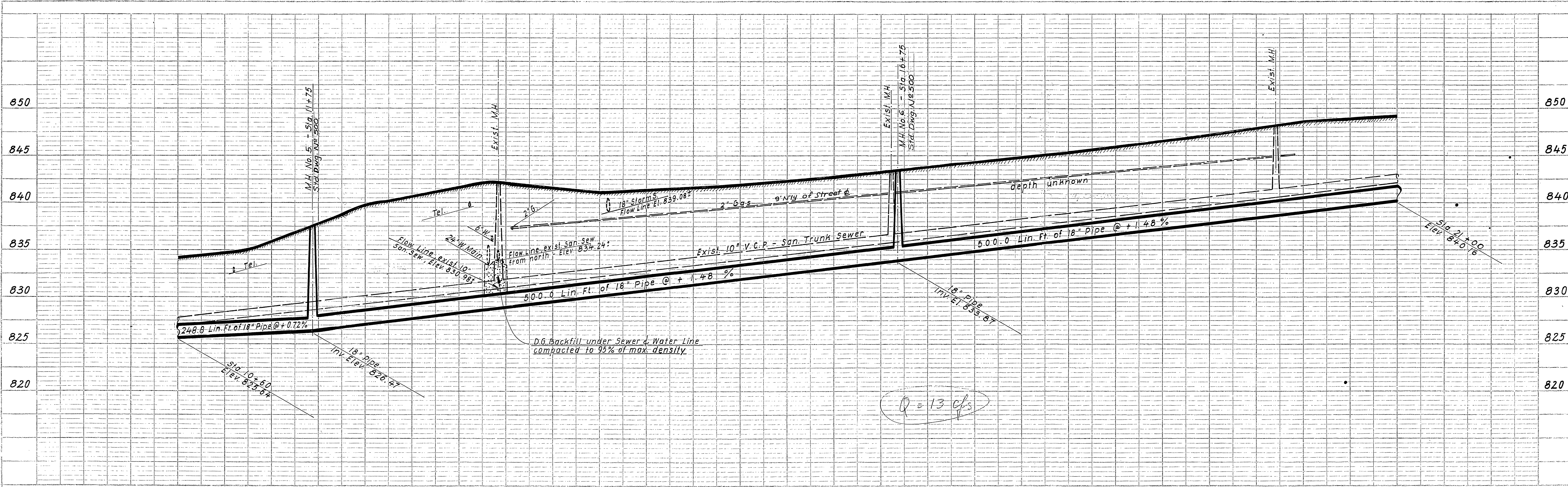


REVISIONS	
MARK	DESCRIPTION

DESIGNED BY: *[Signature]* SUBMITTED BY: *[Signature]*
 DRAWN BY: *[Signature]* PARK DEPT. TRAFFIC DIV.
 CHECKED BY: *[Signature]* RECOMMENDED BY: *[Signature]*
 CITY OF RIVERSIDE, CALIFORNIA
 DEPARTMENT OF PUBLIC WORKS
 CHICAGO AVENUE RELIEF TRUNK SEWER - MAIN STREET -
 STA 0+00 TO STA 10+46.61
 APPROVED BY: *[Signature]* PROJ. NO. 5039
 DATE 4-19-63 SHEET 1 OF 4

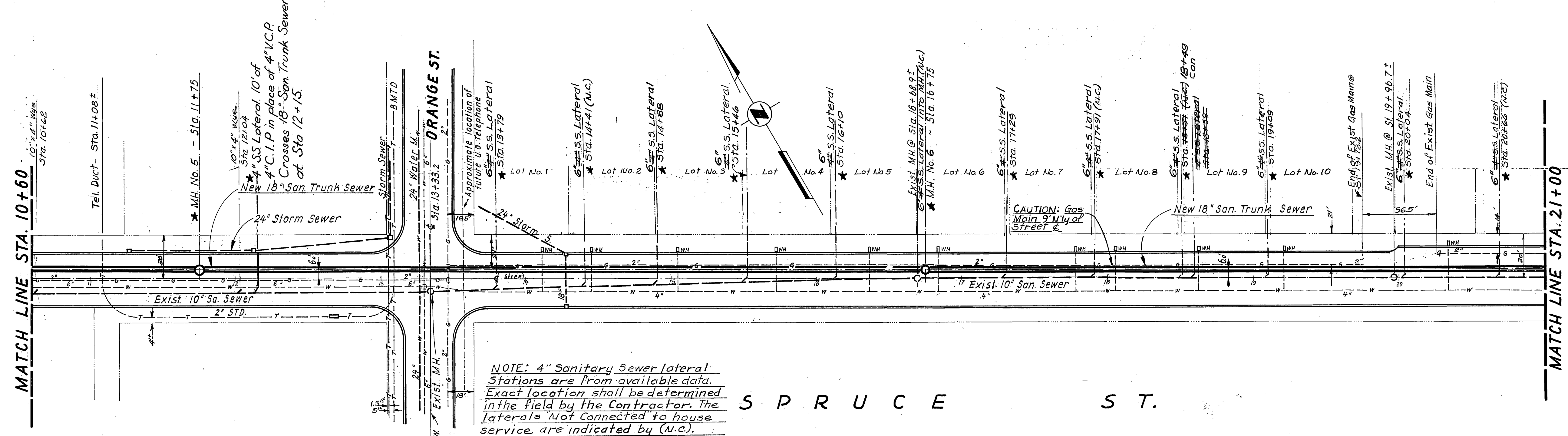
PLAN	DATE	BY
SURVEYED		
PLANNED		
FILED		
NOTED		
NO. OF SHEETS		
STRUCTURE NOTATIONS CHNO.		

*As built. 8.15.63



Q = 13 cfs

SHT. 1 SCALE 1" = 50'
SHT. 2 SCALE 1" = 40'

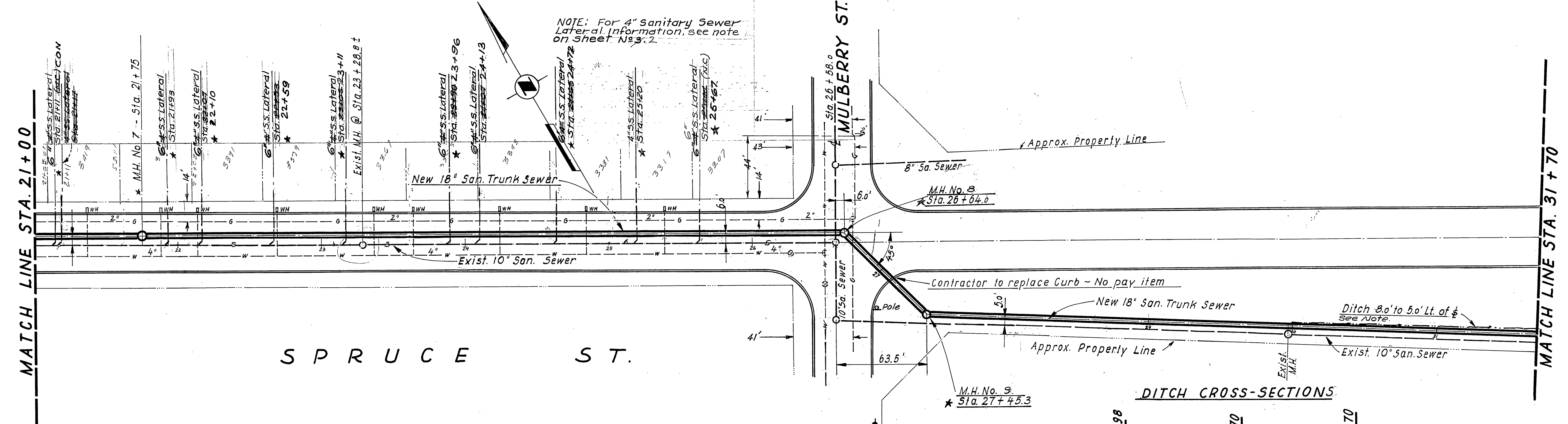
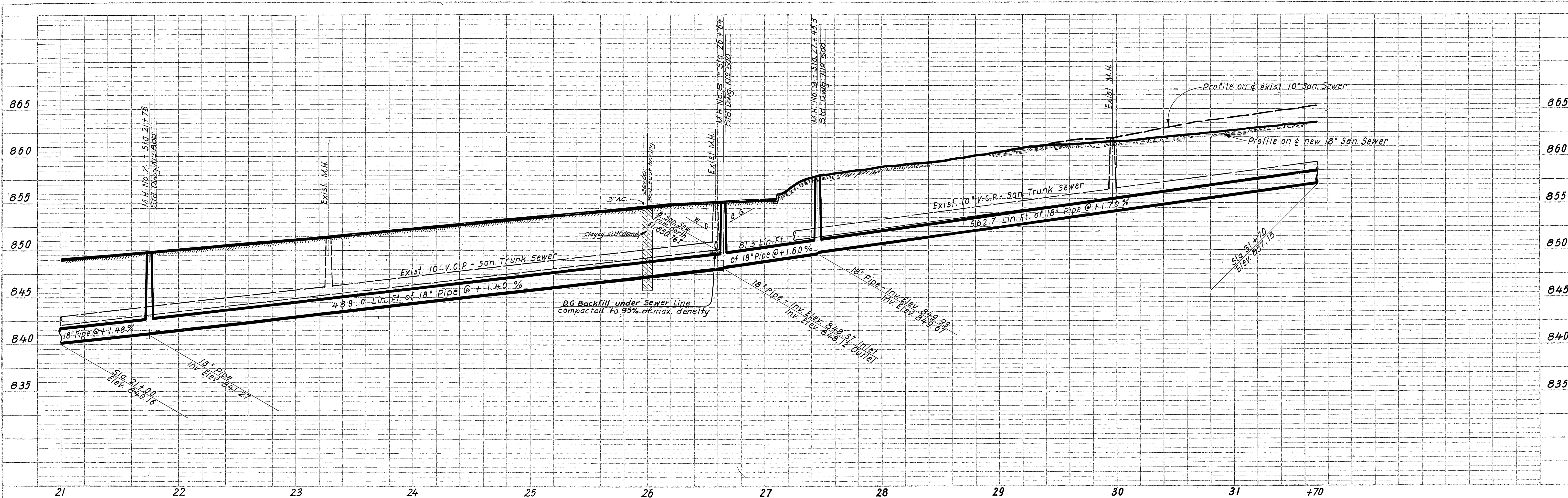


NOTE: 4" Sanitary Sewer lateral Stations are from available data. Exact location shall be determined in the field by the Contractor. The laterals not connected to house service are indicated by (N.C.)

SCALE: 1" = 40' HORIZ.
1" = 5' VERT.

REVISIONS			JOHN A. CAROLLO CONSULTING ENGINEERS PHOENIX, ARIZONA CITY OF RIVERSIDE, CALIFORNIA DEPARTMENT OF PUBLIC WORKS PROJECT NO. 5039 CHICAGO AVE. RELIEF TRUNK SEWER PLAN & PROFILE (SPRUCE ST.) STA. 10+60 TO STA. 21+00
MARK	DATE	DESCRIPTION	
DESIGNED BY:	J.B.E.W.	CHECKED BY:	G.C.W.
DRAWN BY:	H.J.B.	APPROVED BY:	<i>[Signature]</i>
RECOMMENDED BY:	<i>[Signature]</i>	DIRECTOR OF PUBLIC WORKS	DATE: 4-19-63
		ASSISTANT CITY ENGINEER	SHEET 2 OF 4

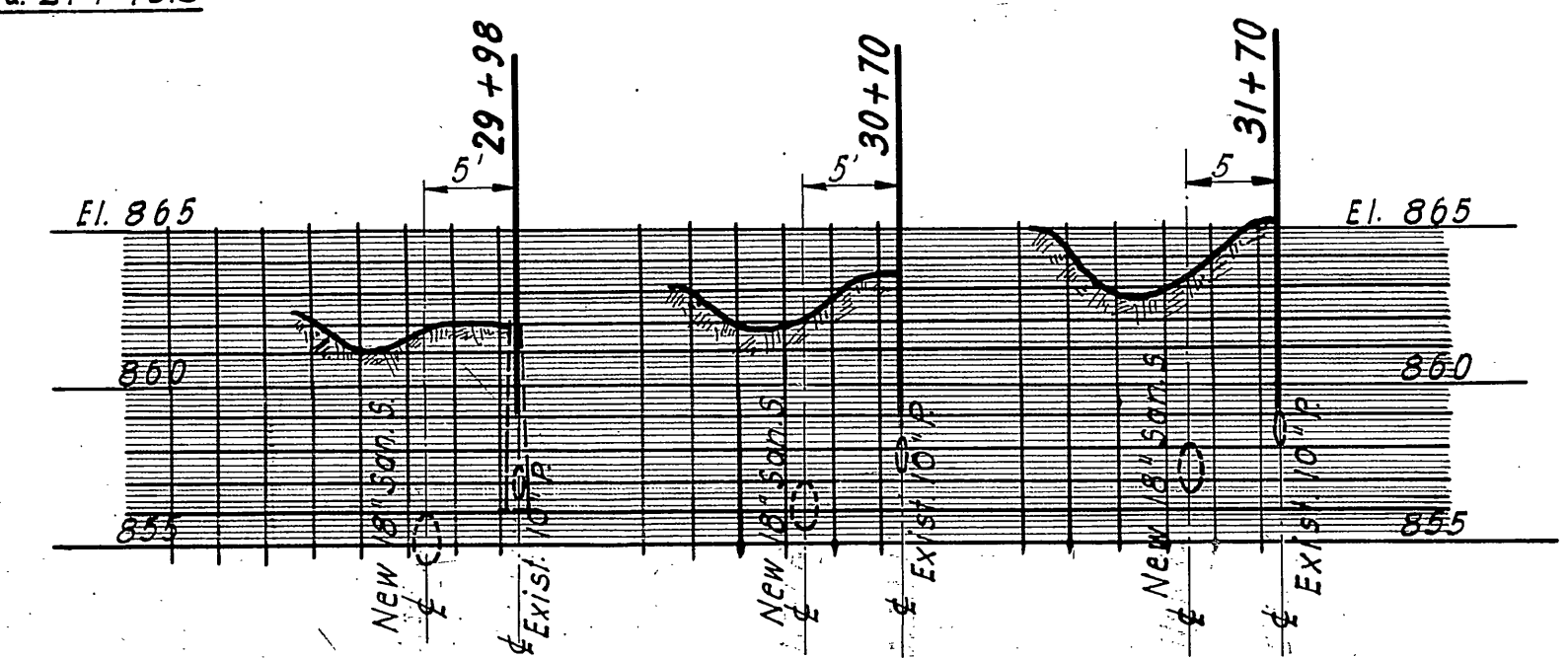
* As built 8.15.63 G.S.



NOTE: For 4" Sanitary Sewer Lateral information, see note on Sheet No. 3.2.

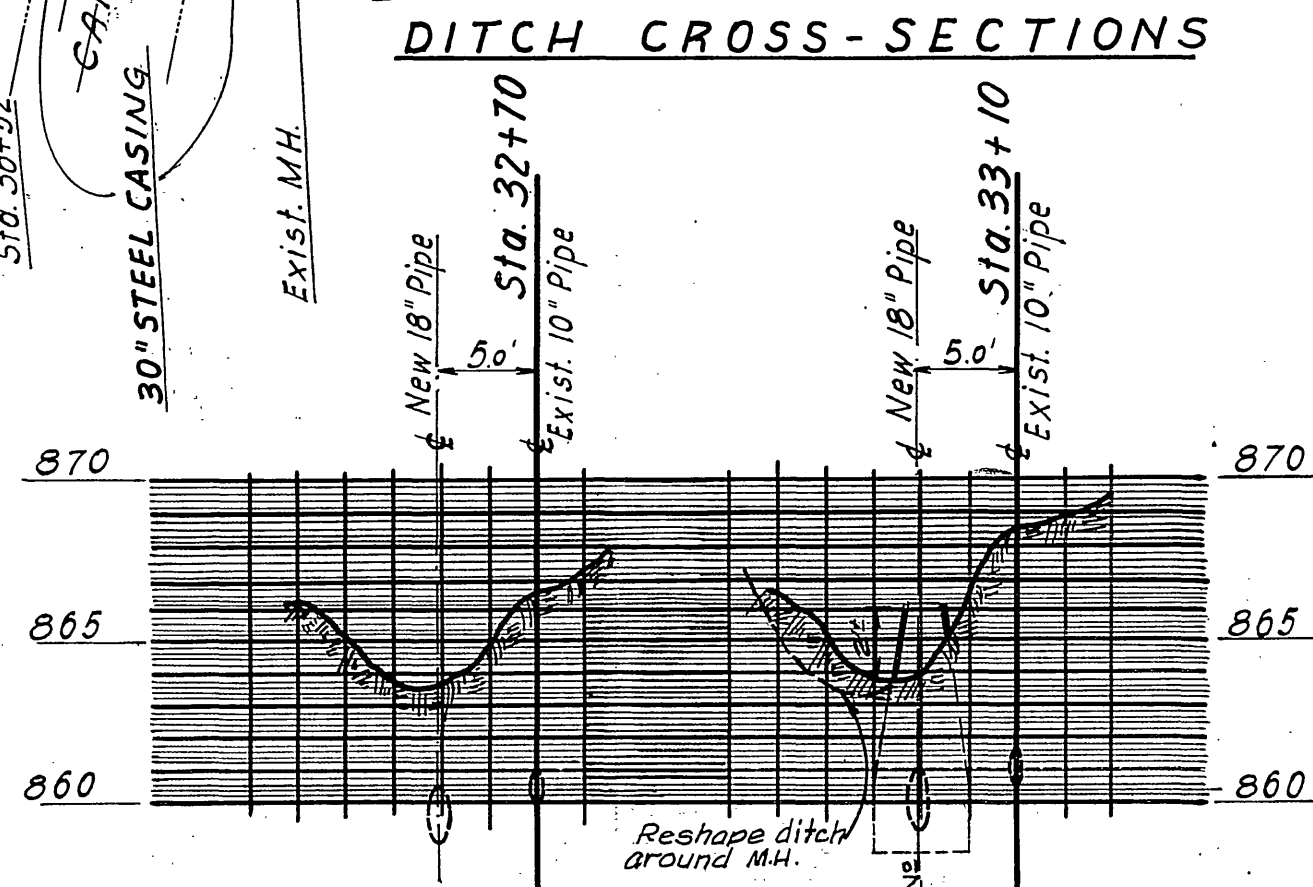
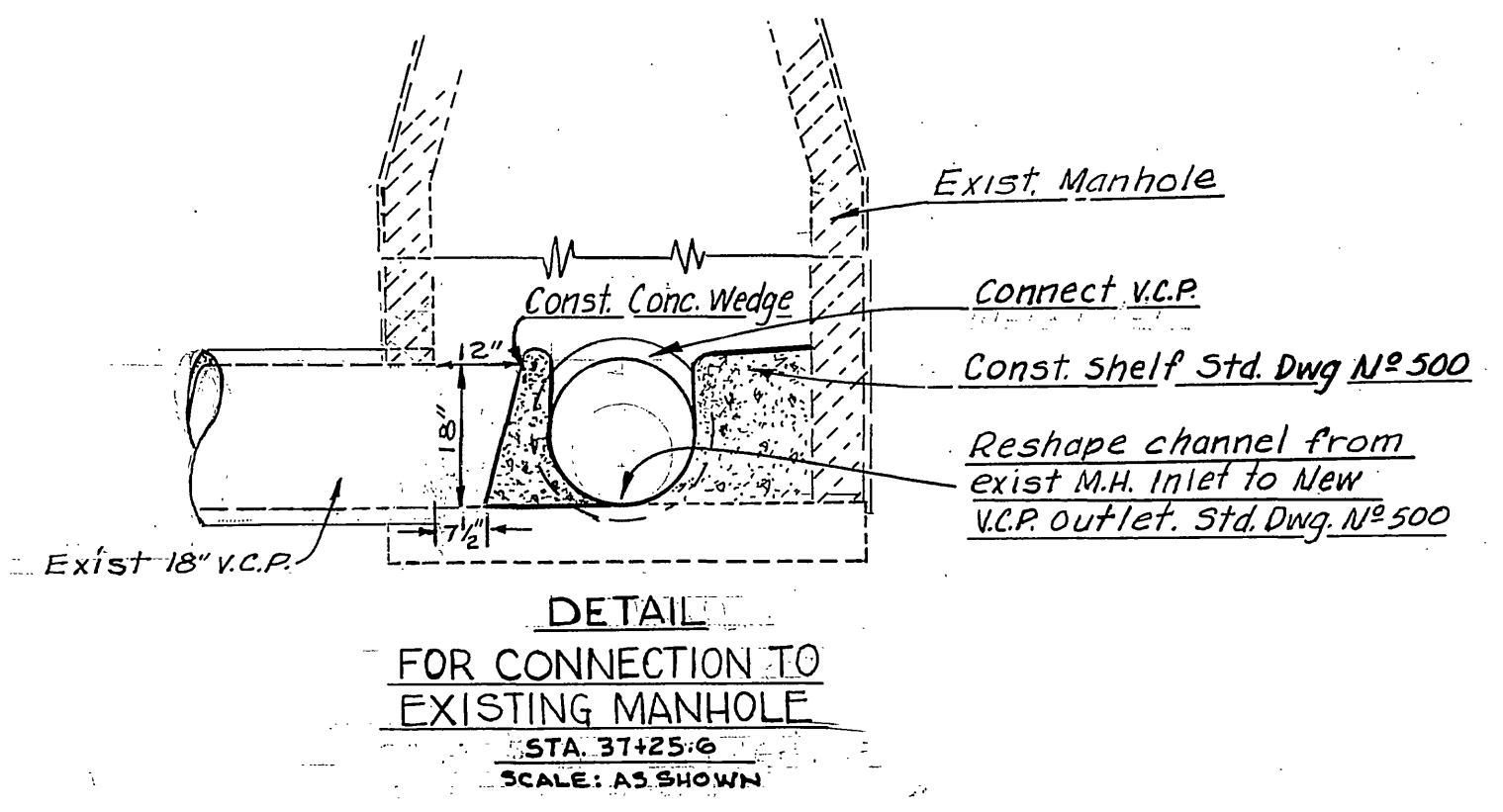
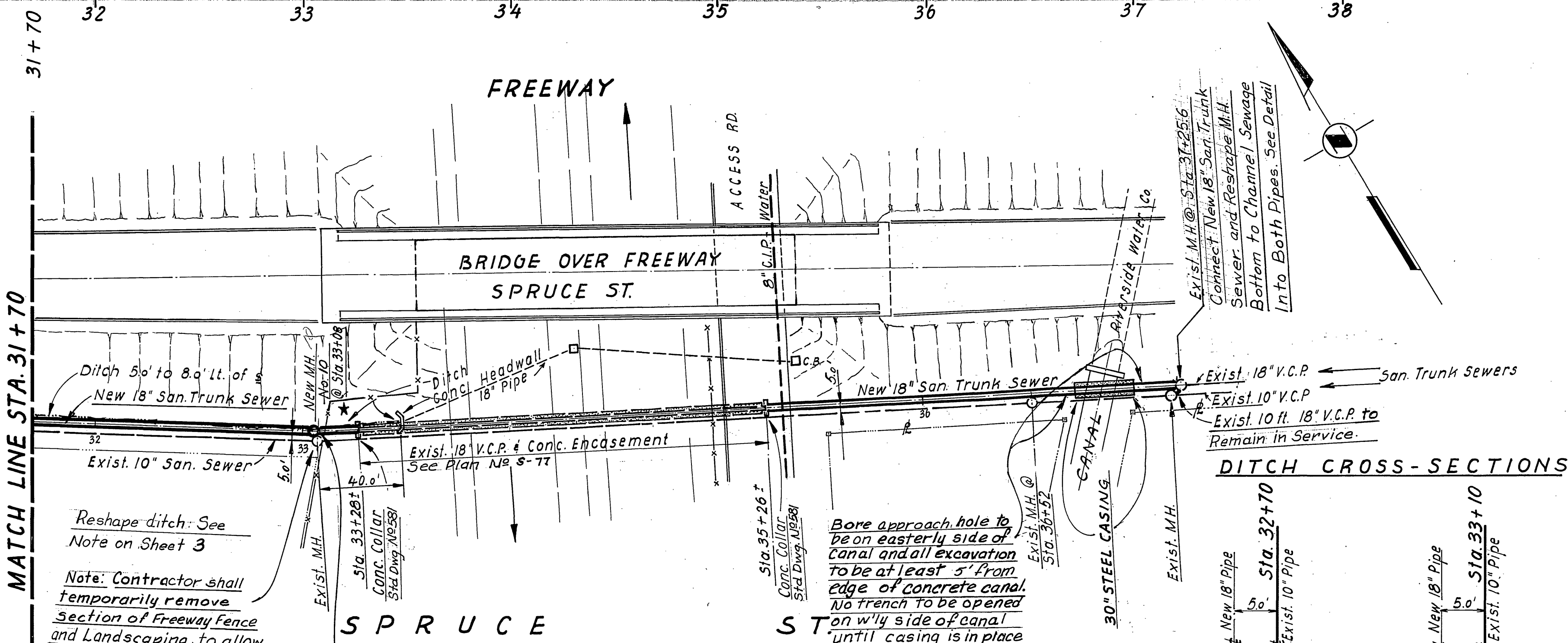
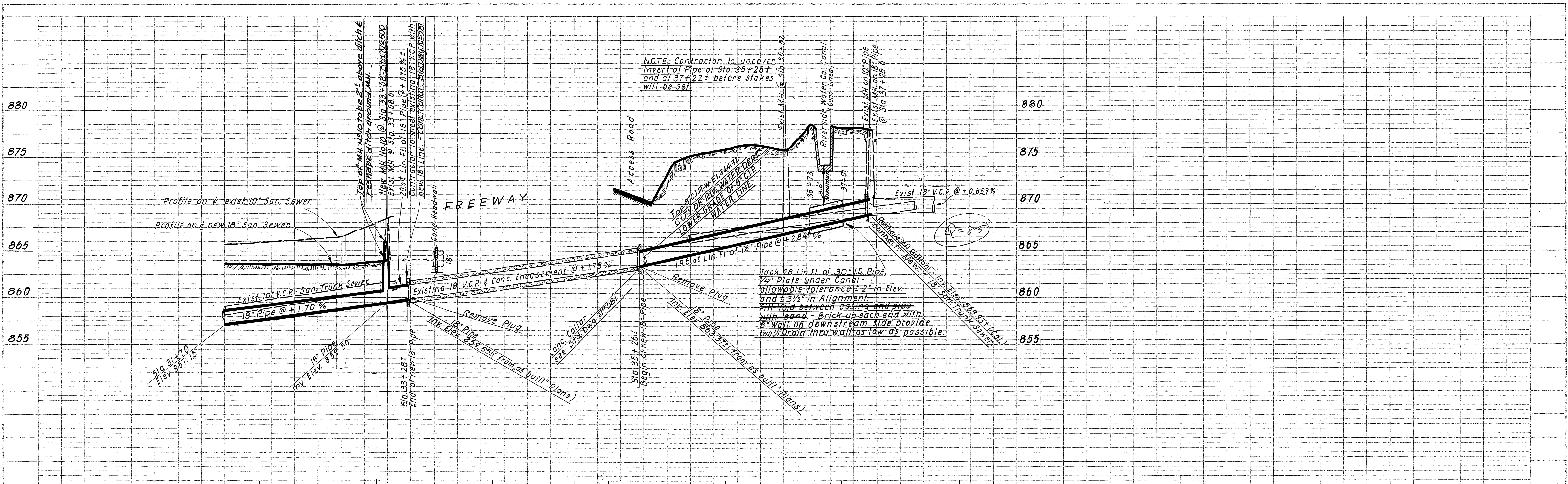
Note:
Contractor to reshape ditch back to original slopes after pipe is installed and backfilled. Pay for this work to be included in unit bid price of 18" pipe.

SCALE: 1" = 40' HORIZ.
1" = 5' VERT.



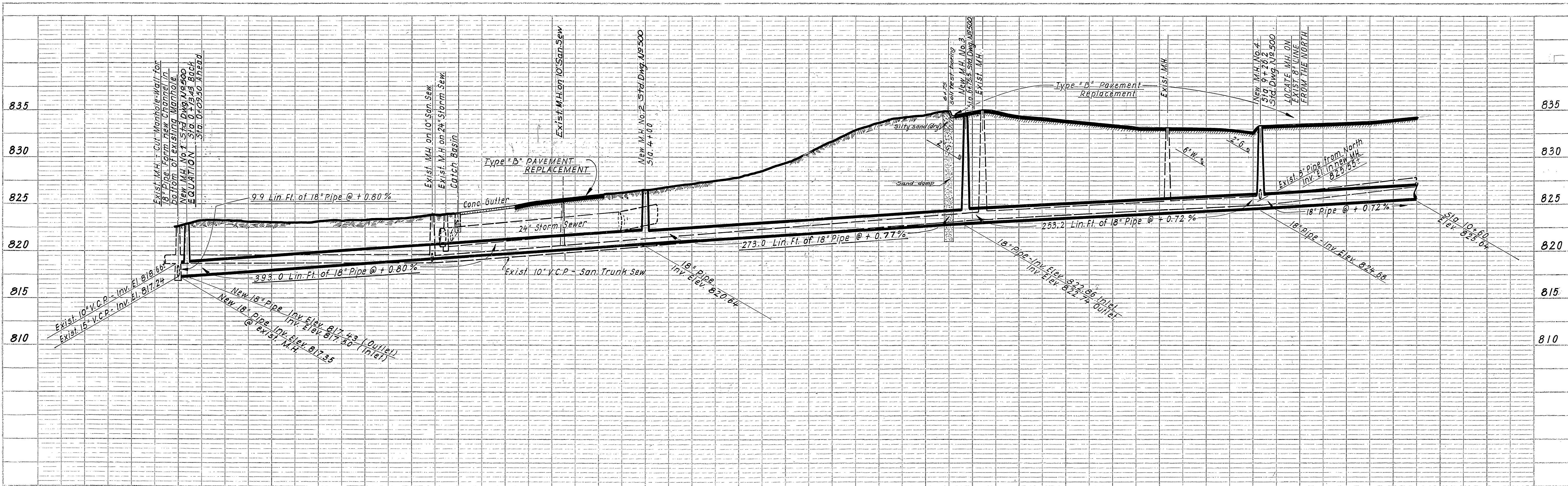
*As built 8.15.63.

REVISIONS			JOHN A. CAROLLO CONSULTING ENGINEERS / PHOENIX, ARIZONA CITY OF RIVERSIDE, CALIFORNIA DEPARTMENT OF PUBLIC WORKS PROJECT NO. 5039 CHICAGO AVE. RELIEF TRUNK SEWER PLAN & PROFILE (SPRUCE ST.) STA. 21+00 TO STA. 31+70
MARK	DATE	DESCRIPTION	
DESIGNED BY: J.S.P.	CHECKED BY: G.C.W.	APPROVED BY:	S-371 DIRECTOR OF PUBLIC WORKS
DRAWN BY: H.J.G.	RECOMMENDED BY: Michael	DATE: 4-19-63	

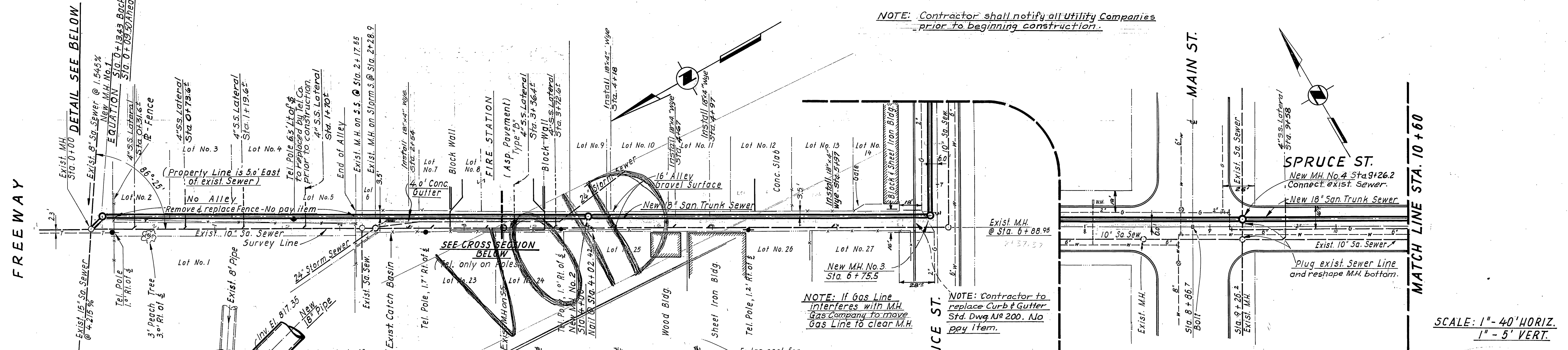


REVISIONS			JOHN A. CAROLLO CONSULTING ENGINEERS PHOENIX, ARIZONA CITY OF RIVERSIDE CALIFORNIA DEPARTMENT OF PUBLIC WORKS PROJECT NO. 5039 CHICAGO AVE. RELIEF TRUNK SEWER PLAN & PROFILE (SPRUCE ST.) STA. 31+70 TO EXIST. M.H. AT STA. 37+25.6
MARK	DATE	DESCRIPTION	
			DESIGNED BY: A.B.L. & G.C.W. CHECKED BY: G.C.W. DRAWN BY: H.J.G. & G.H. RECOMMENDED BY: [Signature] ASSISTANT CITY ENGINEER DATE: 4-19-63
			APPROVED BY: [Signature] DIRECTOR OF PUBLIC WORKS S-371 SHEET 2 OF 4

*As built 8.15.63. G.S.

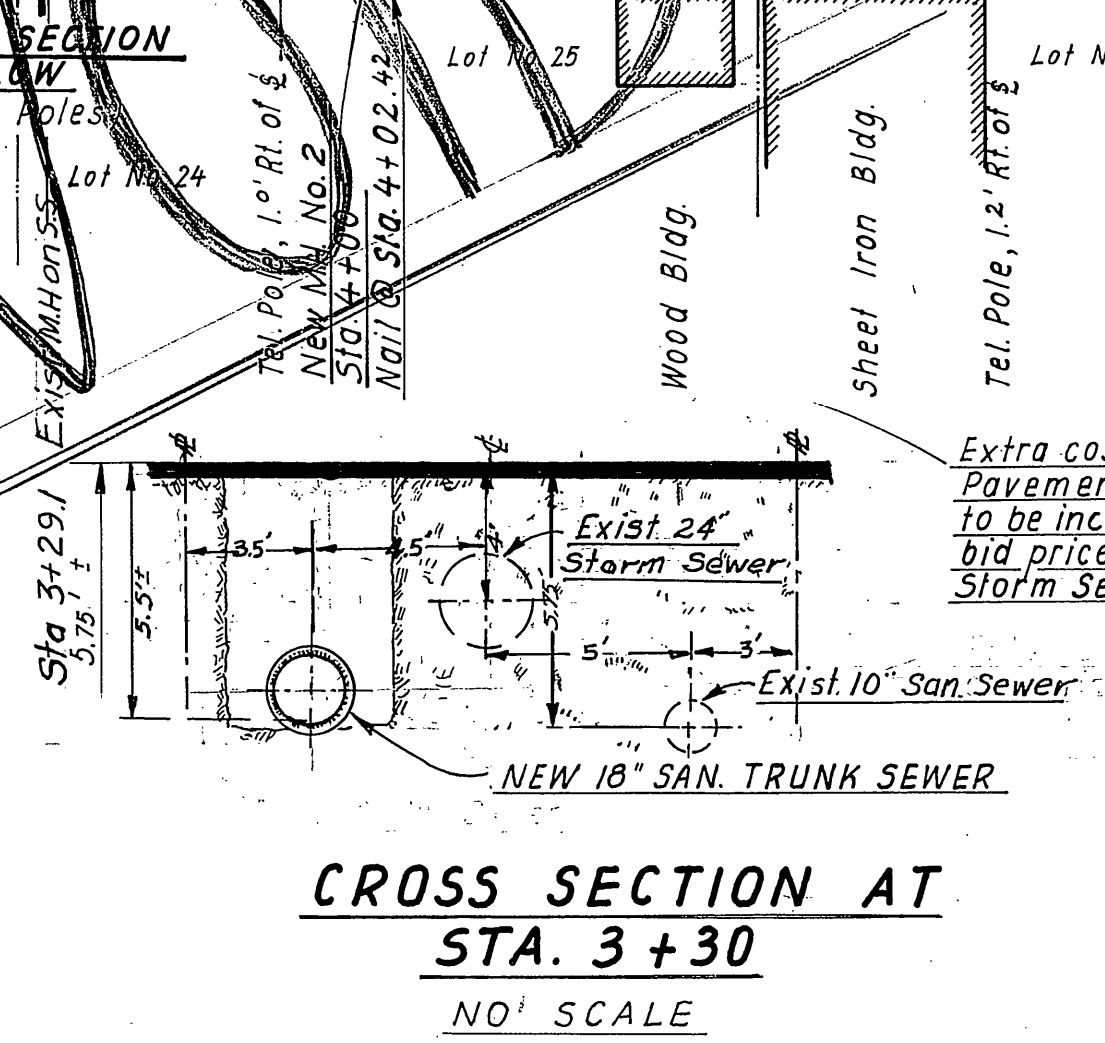
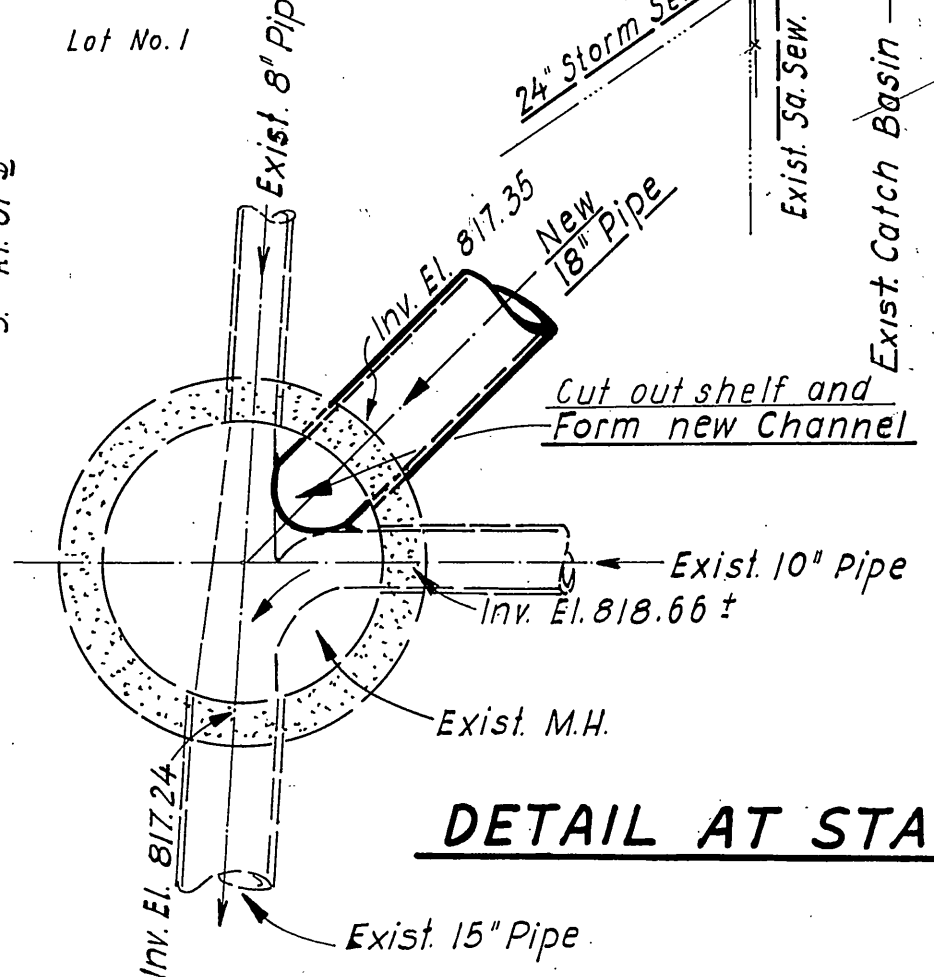


0 1 2 3 4 5 6 7 8 9 10 +60



FREEWAY

MATCH LINE STA. 10 +60



VOID

REVISIONS			JOHN A. CAROLLO CONSULTING ENGINEERS PHOENIX, ARIZONA CITY OF RIVERSIDE, CALIFORNIA DEPARTMENT OF PUBLIC WORKS PROJECT NO. 5039 CHICAGO AVE. RELIEF TRUNK SEWER PLAN & PROFILE (CHICAGO AVE.) STA. 0+00 TO STA. 10+60
MARK	DATE	DESCRIPTION	
			DESIGNED BY: H.J.G. CHECKED BY: G.C.W. APPROVED BY: S-371
			DRAWN BY: H.J.G. DIRECTOR OF PUBLIC WORKS
			RECOMMENDED BY: ASSISTANT CITY ENGINEER DATE: SHEET 1 OF 6