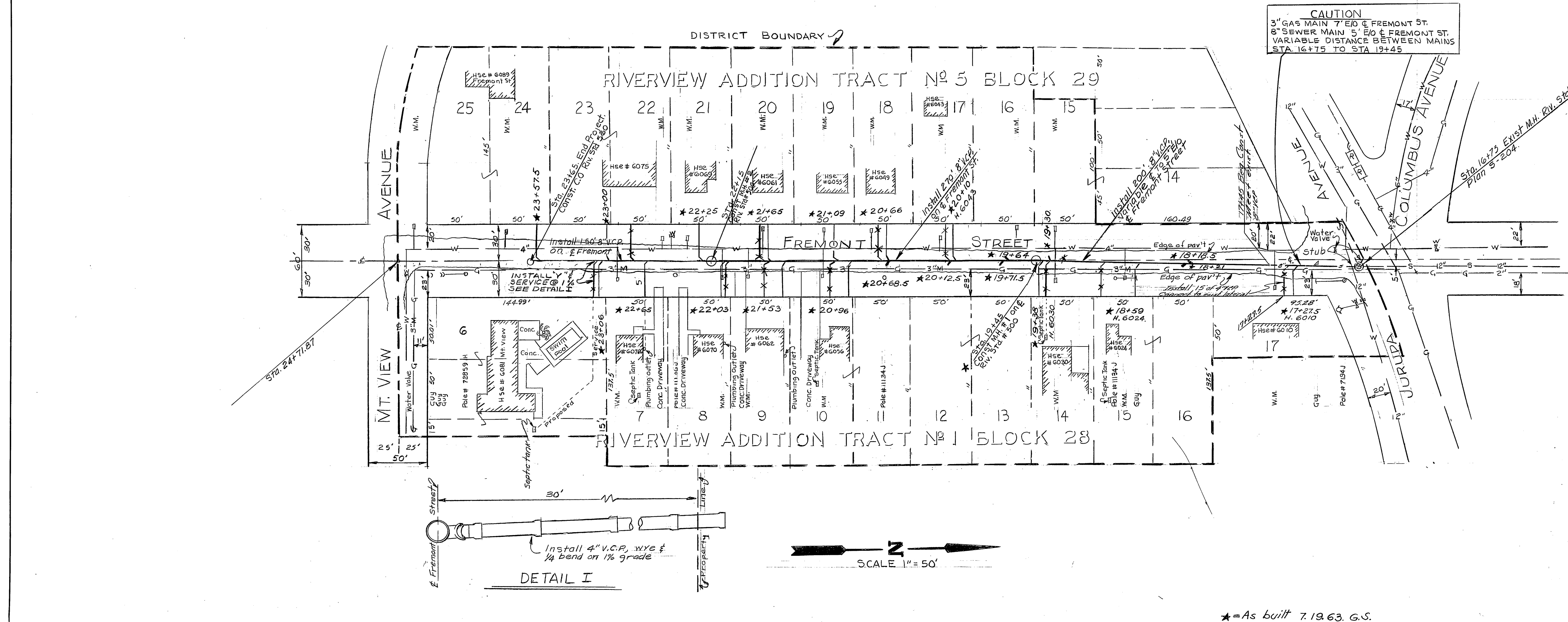


B.M. Elev. 793.61 RR Spike  
in pole # 7194 J S/E Cor  
Jurupa Ave & Fremont St.  
F.B. 5-2 Pg 42  
Scale 1"=5' Vert.  
1"=50' Hor.

PROFILE	DATE	BY
SURVEYED		
PLANNED		
NOTED		
STRUCTURE NOTATIONS CHG.		



**CAUTION**  
3" GAS MAIN 7' E/O F. FREMONT ST.  
8" SEWER MAIN 5' E/O F. FREMONT ST.  
VARIABLE DISTANCE BETWEEN MAINS  
STA. 16+75 TO STA. 19+45

- General Notes:
- Construction shall be in accordance with the City of Riverside Department of Public Works, Specification No. 461 and Standard Dwg.
  - House Connection Wyes shall be field located.
  - Contractor shall determine location of exist. house sewers and shall locate laterals so as to be most economically connected to the house sewers.

Quantity Estimate

8" Vitrified Clay Pipe	620 lin. ft.
4" Vitrified Clay Pipe	433 lin. ft.
8" x 4" Wyes	21 Ea.
Std. 500 Manholes	2 Ea.
Std. 560 Cleanout	1 Ea.
Paving Replacement	2,165 S.F.
Fog Seal Coat	13,900 S.F.

PLAN	DATE	BY
SURVEYED		
PLANNED		
NOTED		
REVISIONS		

REVISIONS		CITY OF RIVERSIDE, CALIFORNIA DEPARTMENT OF PUBLIC WORKS	
MARK	DATE	DESCRIPTION	
2	1-11-65	Revised plan to show 10' of curb along S/E of Jurupa Ave. Approved: <i>[Signature]</i>	
		FREMONT STREET SANITARY SEWER DISTRICT	
		JURUPA AVENUE TO MT. VIEW AVENUE	
DESIGNED BY	SUBMITTED BY	APPROVED BY	PROJ. NO. 6036
DRAWN BY	PARK DEPT. TRAFFIC DIV.	<i>[Signature]</i>	S-372
CHECKED BY	RECOMMENDED BY	DATE	SHEET 1 OF 1
		9-13-62	

\*As built 7.19.63. G.S.