

ASSESSMENT NO. 490

DIAGRAM

EXHIBITING FREMONT STREET SANITARY SEWER DISTRICT  
IN THE CITY OF RIVERSIDE, CALIFORNIA, AND THE WORK WHICH HAS BEEN DONE  
PURSUANT TO THE CONTRACT BETWEEN THE SUPERINTENDENT OF STREETS OF  
SAID CITY AND MONTCLAIR SEWER CONSTRUCTION CO. DATED APRIL 9, 1963.  
FOR THE CONSTRUCTION OF A SANITARY SEWER AND APPURTENANCES

AS IS MORE PARTICULARLY DESCRIBED IN SAID CONTRACT, TO WHICH REFERENCE  
IS HEREBY MADE FOR FURTHER PARTICULARS.  
SAID DIAGRAM ALSO SHOWS EACH SEPARATE LOT OR PARCEL OF LAND WITHIN THE  
LIMITS OF THE ASSESSMENT DISTRICT, AND THE DIMENSIONS OF EACH SUCH LOT OR  
PARCEL OF LAND, AND THE RELATIVE LOCATION OF THE SAME TO THE WORK DONE.  
EACH LOT OR PARCEL OF LAND IS NUMBERED IN RED INK TO CORRESPOND TO THE  
RED INK NUMBERS IN THE ASSESSMENT.  
HEREIN FIGURES NEXT TO PROPERTY LINES SHOW LENGTH OF SAID LINES IN FEET  
AND DECIMALS THEREOF.  
THE MARK (') MEANS FEET.  
PROPERTY LINES THAT DIFFER FROM THE RECORDED SUBDIVISIONS ARE SHOWN BY  
BROKEN LINES.  
THE DISTRICT BENEFITED IS BOUNDED BY A HEAVY DASHED LINE.  
PROPERTY INCLUDED IN THIS ASSESSMENT IS SHOWN ON THE FOLLOWING RECORDED  
MAPS:  
RIVERVIEW ADDITION TRACT NO. 1-M.B. 6, PG. 38, RIV. CO. RECORDS.  
RIVERVIEW ADDITION TRACT NO. 5-M.B. 7, PG. 7, RIV. CO. RECORDS.

HEREIN THE DIFFERENT KINDS OF WORK  
PERFORMED ARE SHOWN AS FOLLOWS:

- 8" MAIN SEWER
- 4" HOUSE CONNECTION LATERAL
- 8" X 4" WYE
- MANHOLE
- ⊙ CLEANOUT

HERE FOLLOWS A STATEMENT OF AMOUNTS OF  
DIFFERENT KINDS OF WORK DONE PURSUANT TO  
THE HERE-IN-BEFORE IDENTIFIED CONTRACT  
AND TO RESOLUTION OF INTENTION NO. 9565,  
ADOPTED BY THE CITY COUNCIL OF THE CITY  
OF RIVERSIDE, CALIFORNIA ON THE 27TH DAY  
OF NOVEMBER, 1962.

- 620 - L.F. - 8" VITRIFIED CLAY PIPE.
- 433 - L.F. - 4" VITRIFIED CLAY PIPE.
- 21 - E.A. - 8" X 4" WYES.
- 2 - E.A. - MANHOLES - STD. DWG. NO. 500.
- 1 - E.A. - CLEANOUT - STD. DWG. NO. 560.
- 2165 - S.F. - PAVEMENT REPLACEMENT.
- 13,900 - S.F. - FOG SEAL COAT.

I HEREBY CERTIFY THAT THE ABOVE WORK WAS DONE IN ACCORDANCE  
WITH LINES AND GRADES FURNISHED OR APPROVED BY ME, AND THAT  
THE DIAGRAM OF THE ASSESSMENT DISTRICT AND THE QUANTITIES  
OF WORK SHOWN HEREON ARE CORRECT.


  
CITY ENGINEER OF THE  
CITY OF RIVERSIDE, CALIFORNIA

DIAGRAM RECEIVED:

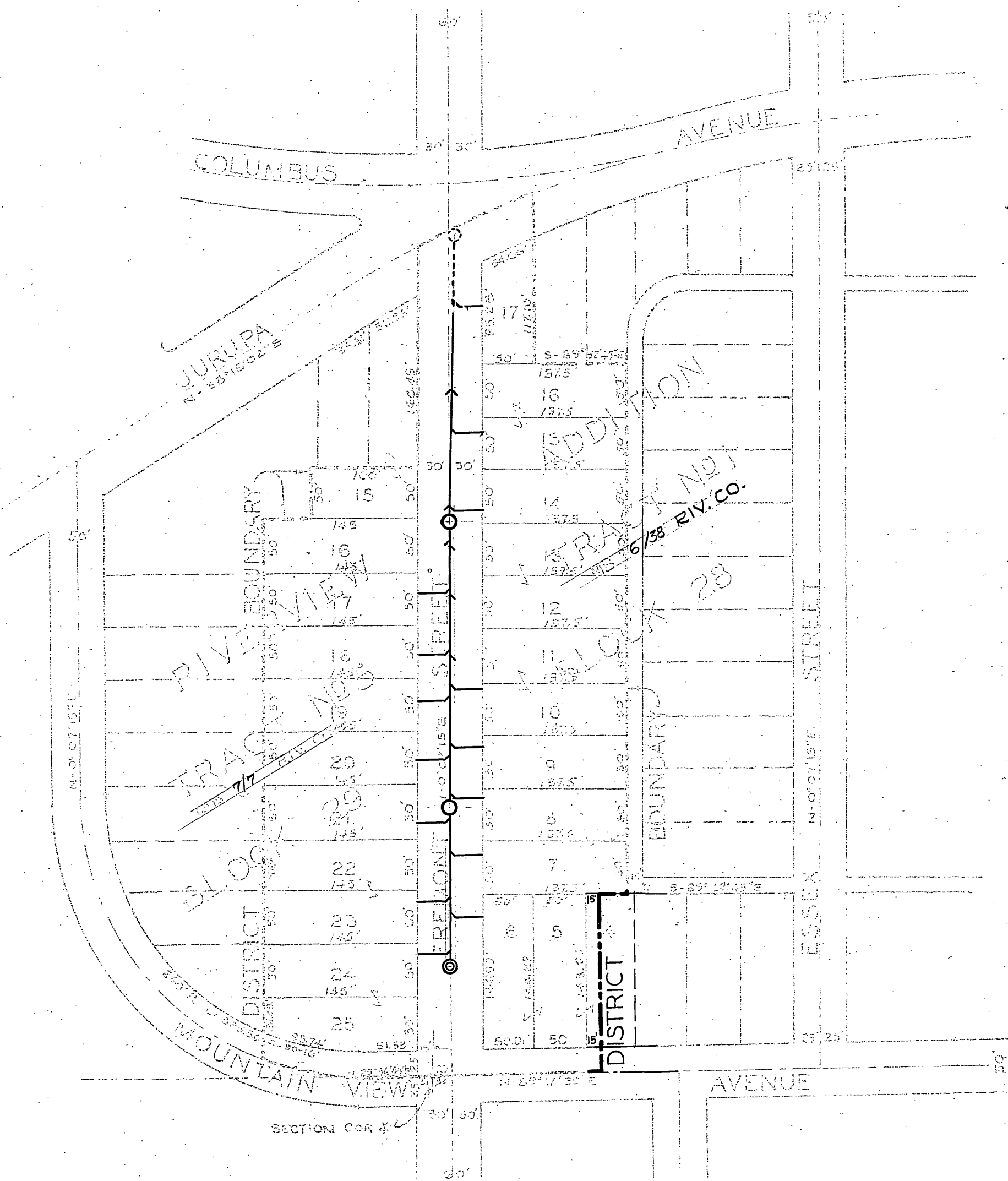
THIS DAY OF , 19

SUPERINTENDENT OF STREETS OF THE  
CITY OF RIVERSIDE, CALIFORNIA

RECORDED:

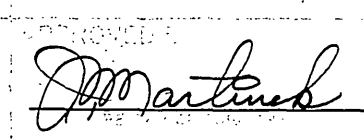
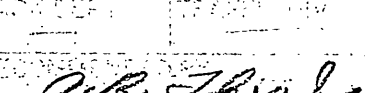
AT O'CLOCK, M.,  
THIS DAY OF , 19

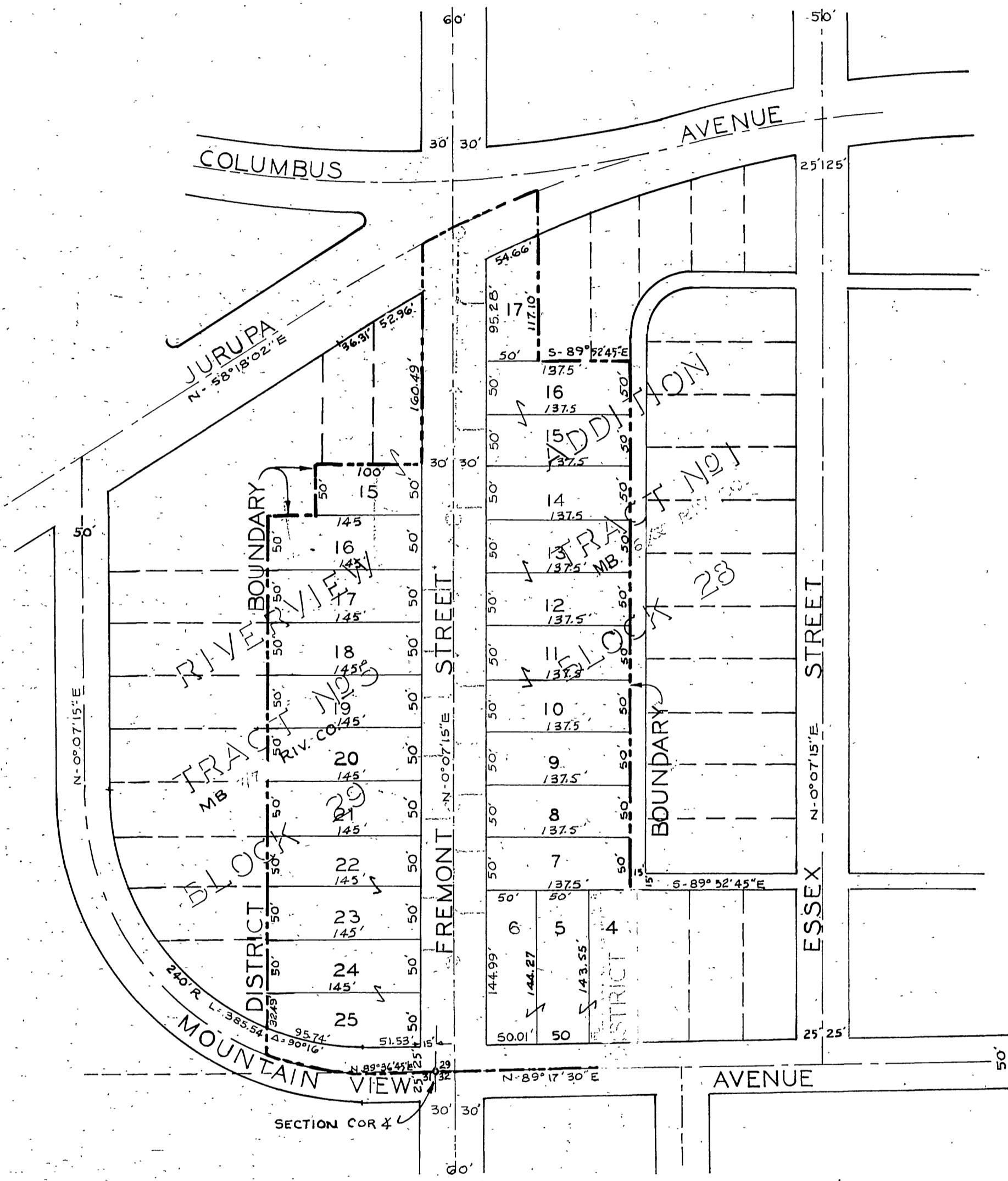
SUPERINTENDENT OF STREETS OF THE  
CITY OF RIVERSIDE, CALIFORNIA



SCALE: 1" = 100'

DIAGRAM  
 OF THE PROPERTY AFFECTED OR BENEFITED  
 BY THE WORK IN THE  
 FREMONT STREET  
 SANITARY SEWER DISTRICT

REVISIONS		CITY OF RIVERSIDE, CALIFORNIA DEPARTMENT OF PUBLIC WORKS
MARK	DATE	
		FREMONT STREET SANITARY SEWER DISTRICT
DESIGNED	6/27	 6036 <b>S-372-B</b> 2 2
DRAWN	6/27	
CHECKED	6/27	
 7-1-63		



N  
SCALE: 1" = 100'

DIAGRAM  
OF THE PROPERTY AFFECTED OR BENEFITED  
BY THE WORK IN THE  
PREMISES HEREIN  
SANITARY SEWER DISTRICT

REVISIONS			CITY OF RIVERSIDE, CALIFORNIA DEPARTMENT OF PUBLIC WORKS	
MARK	DATE	DESCRIPTION		
			FREMONT STREET SANITARY SEWER DISTRICT	
DESIGNED BY	SUBMITTED BY	APPROVED BY	PROJ. NO. 5000	
DRAWN BY	PARK DEPT	TRAFFIC DIV.	<b>S-372B</b>	
CHECKED BY	RECOMMENDED BY	DATE	SHEET 2 OF 2	