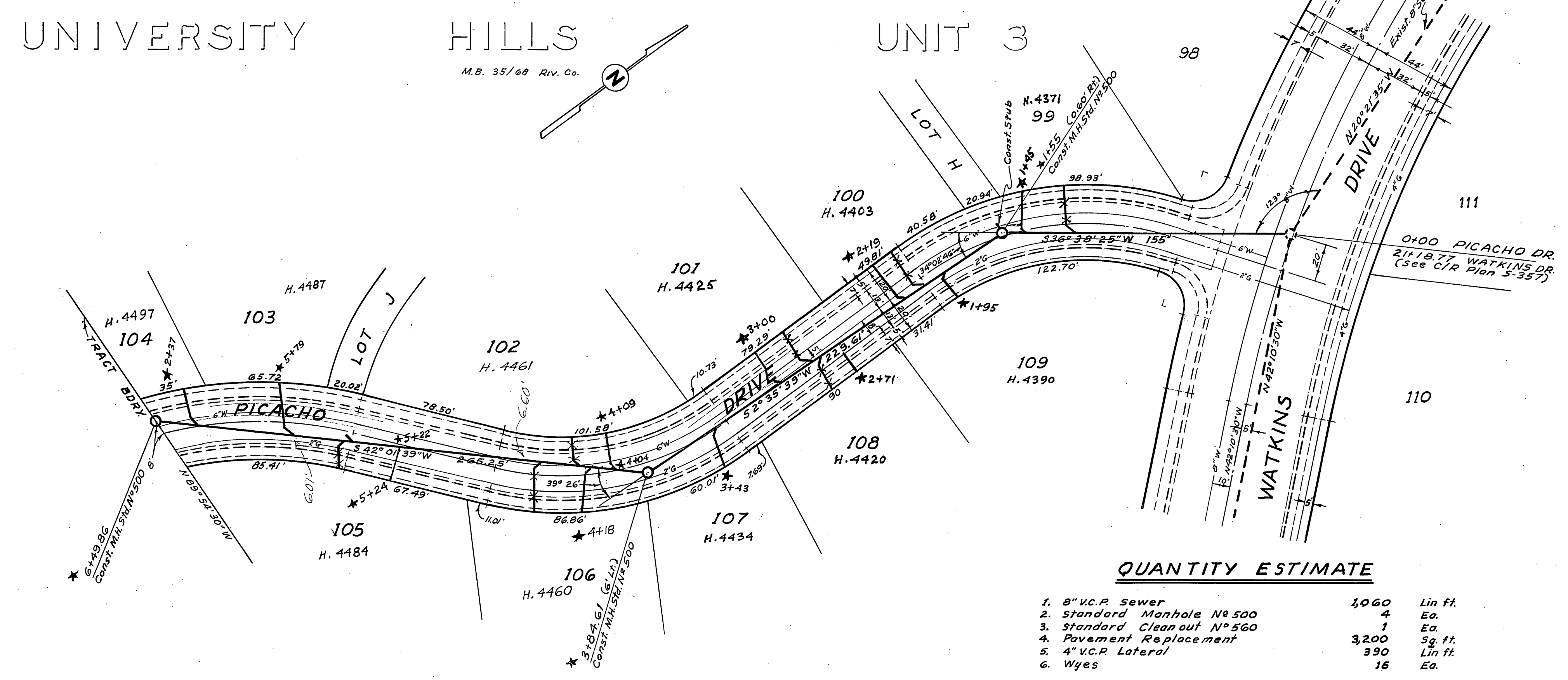


Scale: Horiz. 1" = 40'
 Vert. 1" = 4'

B.M. Spk. in Guy Pole No. 3508 at S.W. cor. of Big Springs Road & Mt. Vernon Ave. Elev. 1130.46



GENERAL NOTES

1. Construction shall be in accordance with the City of Riverside Department of Public Works Specifications No. 461 and Standard Drawings.
2. Location of house connection laterals to be determined in the field.
3. Pipe shall be bedded Case II, Standard Drawing No. 452.
4. Note to Contractor: The existence and location of any underground utility pipes or structures shown on these plans are obtained by a search of the available records. To the best of our knowledge there are no existing utilities except as shown on this map. The contractor is required to take due precautionary measures to protect the utility lines shown and any other lines not of record or not shown on this drawing.
5. Center 20' of each street shall be fog sealed.

QUANTITY ESTIMATE

1. 8" V.C.P. Sewer	1,060	Lin. ft.
2. Standard Manhole No. 500	4	Ea.
3. Standard Cleanout No. 560	1	Ea.
4. Pavement Replacement	3,200	Sq. ft.
5. 4" V.C.P. Lateral	390	Lin. ft.
6. Wyes	16	Ea.

ALBERT A. WEBB ASSOCIATES
 CIVIL ENGINEERS - RIVERSIDE, CALIFORNIA
 APPROVED: *[Signature]* DATE 8/20/62

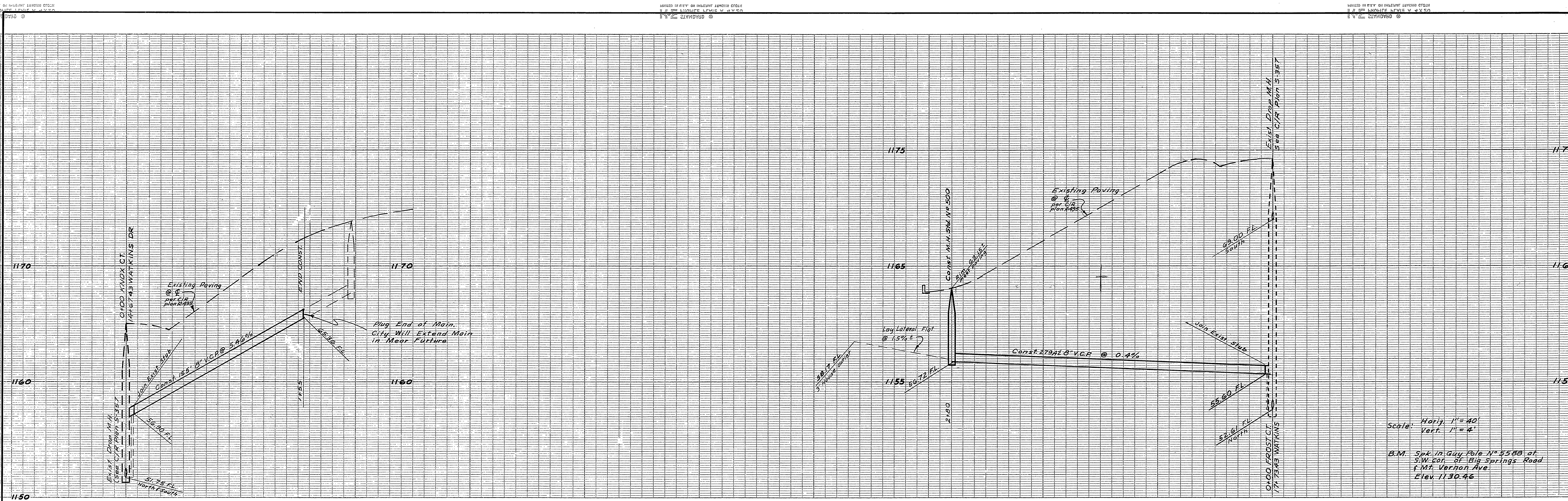
CITY OF RIVERSIDE, CALIFORNIA
 DEPARTMENT OF PUBLIC WORKS
Sewer Plan & Profile

PICACHO DRIVE

REVISION		DESCRIPTION
MARK	DATE	DESCRIPTION
*	12/11/62	As built R.K.

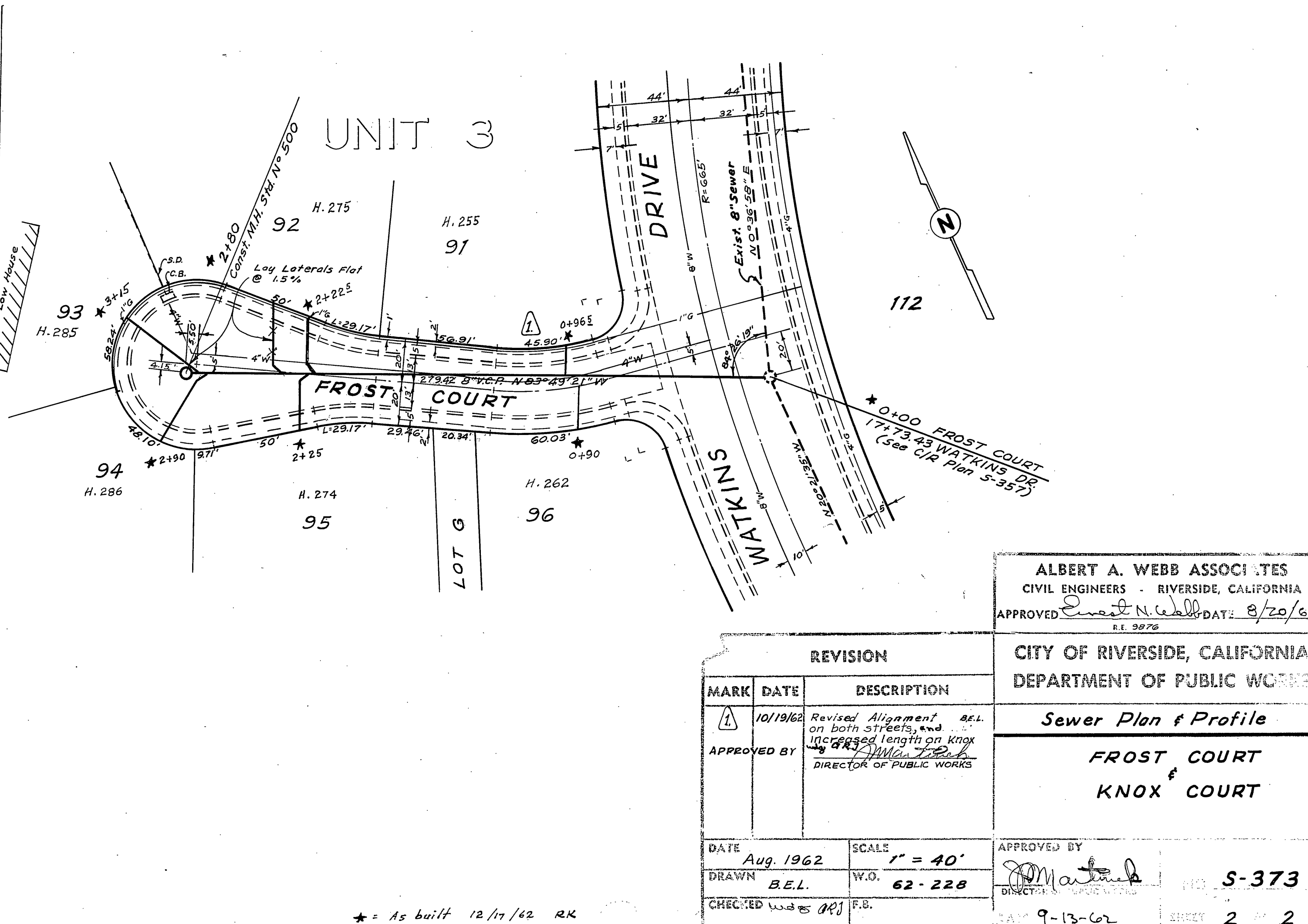
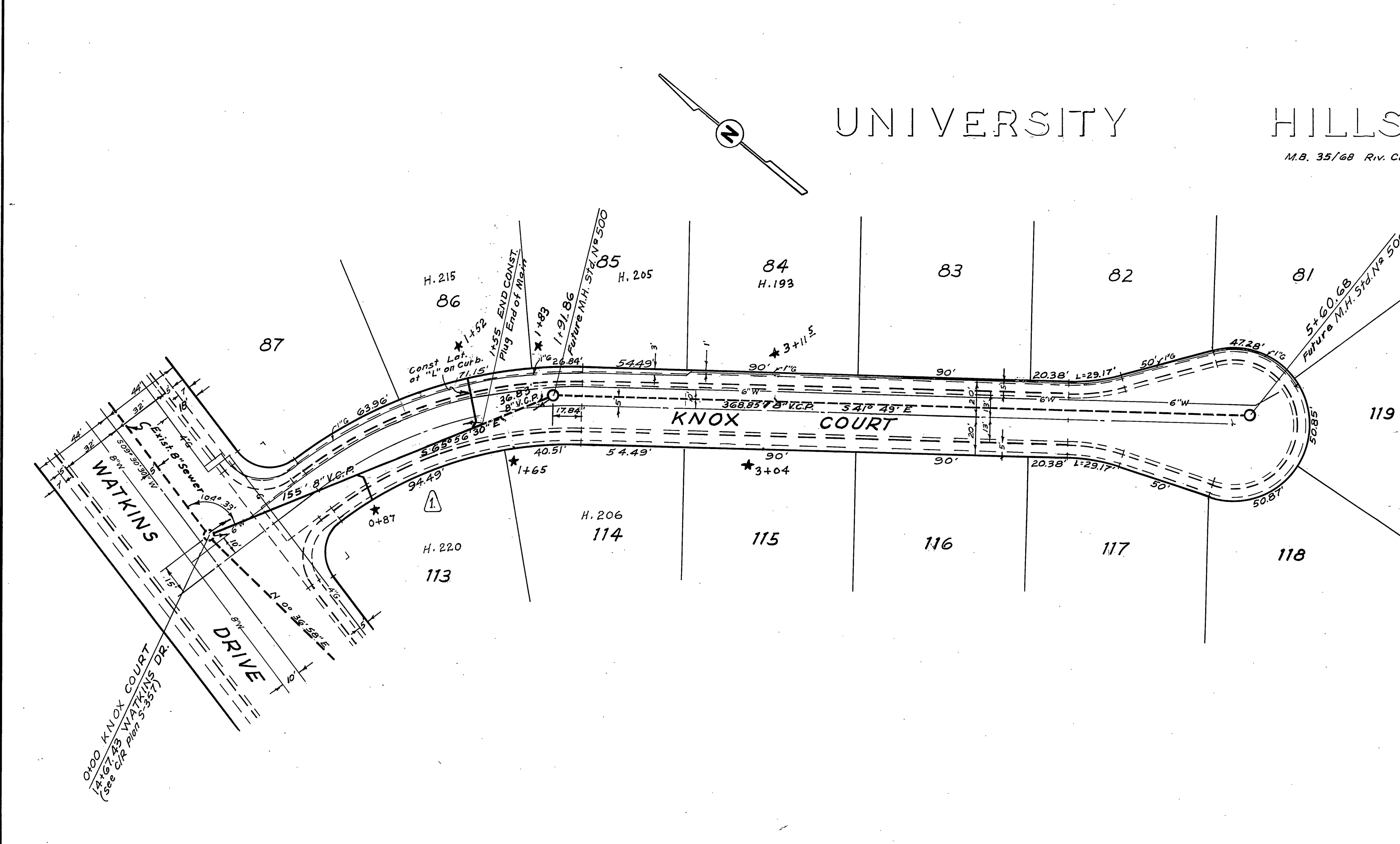
DATE Aug 1962
 DRAWN B.E.L.
 CHECKED W.S. ORT

SCALE 1" = 40'
 W.O. 62-228
 F.B.
 APPROVED BY: *[Signature]*
 DIRECTOR OF PUBLIC WORKS
 DATE Oct 3, 1962
 NO. S-373
 SHEET 1 OF 2



Scale: Horiz. 1" = 40'
 Vert. 1" = 4'

B.M. Spk. in Guy Pole N° 5588 of
 S.W. Cor. of Big Springs Road
 f. Mt. Vernon Ave.
 Elev. 1136.46



ALBERT A. WEBB ASSOCIATES CIVIL ENGINEERS - RIVERSIDE, CALIFORNIA APPROVED: <i>Albert A. Webb</i> DATE: 8/20/67 <small>R.E. 9076</small>	
CITY OF RIVERSIDE, CALIFORNIA DEPARTMENT OF PUBLIC WORKS Sewer Plan & Profile FROST COURT KNOX COURT	
REVISION MARK DATE DESCRIPTION (A) 10/19/62 Revised Alignment on both streets, and increased length on Knox Court APPROVED BY: <i>Wm. J. ...</i> <small>DIRECTOR OF PUBLIC WORKS</small>	DATE: Aug. 1962 DRAWN: B.E.L. CHECKED: <i>W.B.S.</i>
SCALE: 1" = 40' W.O. 62-228 F.B.	APPROVED BY: <i>Wm. J. ...</i> <small>DIRECTOR OF PUBLIC WORKS</small> DATE: 9-13-62 SHEET: 2 of 2

* = As built 12/17/62 R.K.