

Estimated Quantities

8" V.C.P.	198	L.F.
4" V.C.P. Lateral	72	L.F.
Clean out	1	each
Chimney	6	L.F.
8" x 4" Wye	1	each
Pavement Removal	700	S.F.
Pavement Replacement	70	S.F.
Temp. Dust Cap Surfacing	630	S.F.
M.H. Per. Std. Dwg. #500	1	each

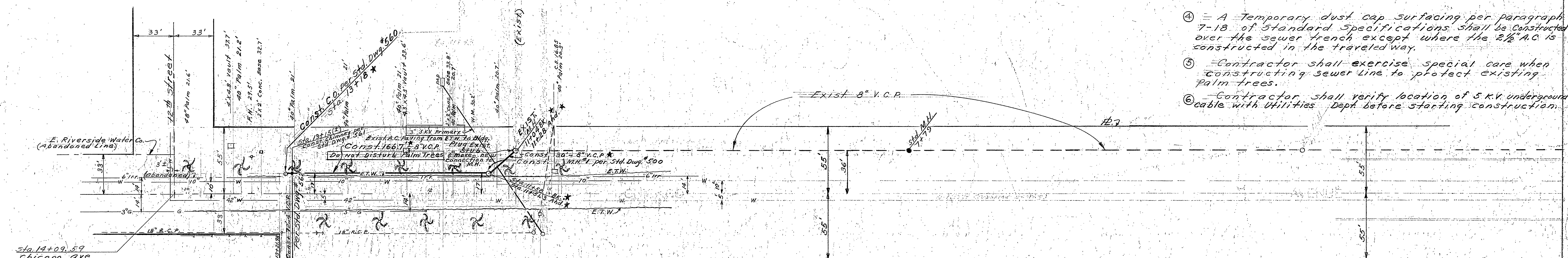
Scale 1" = 40'

CONSTRUCTION

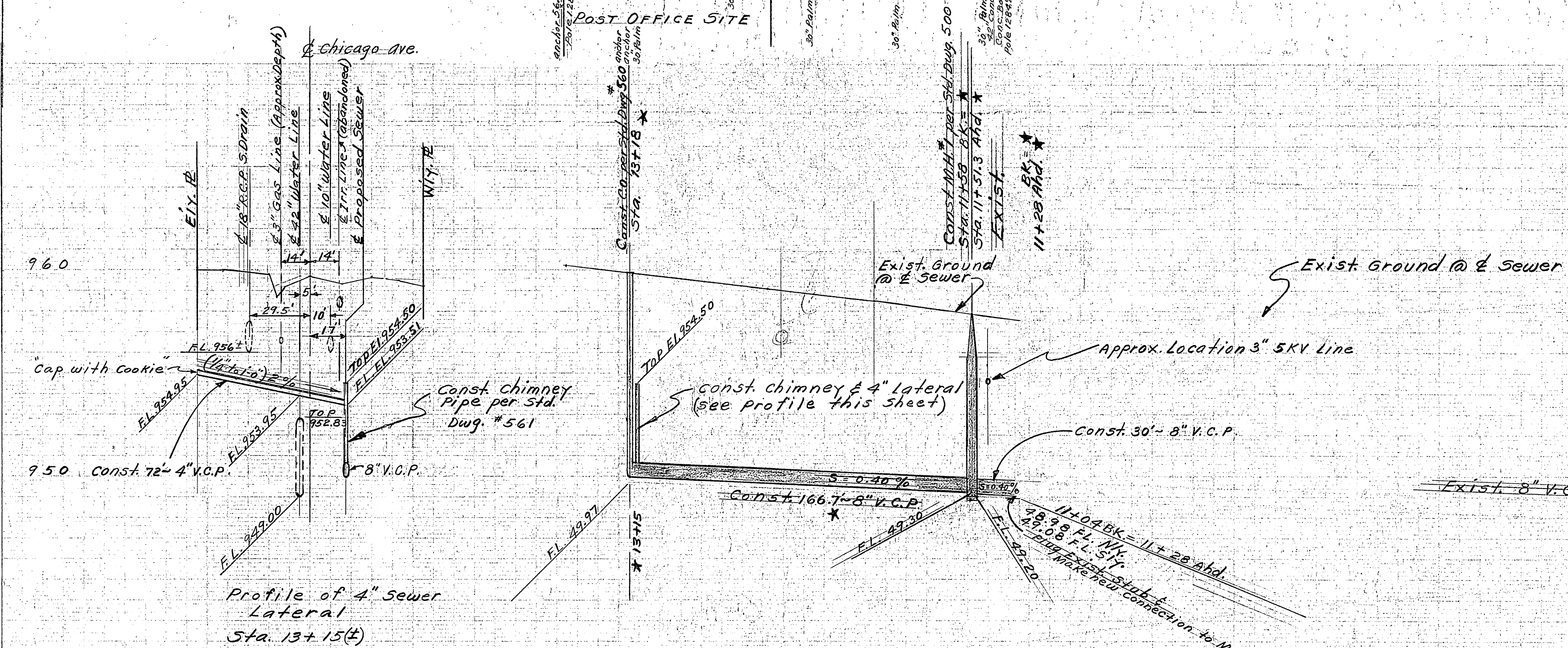
⑦ Two-way traffic shall be maintained on Chicago Ave. at all times.

NOTES

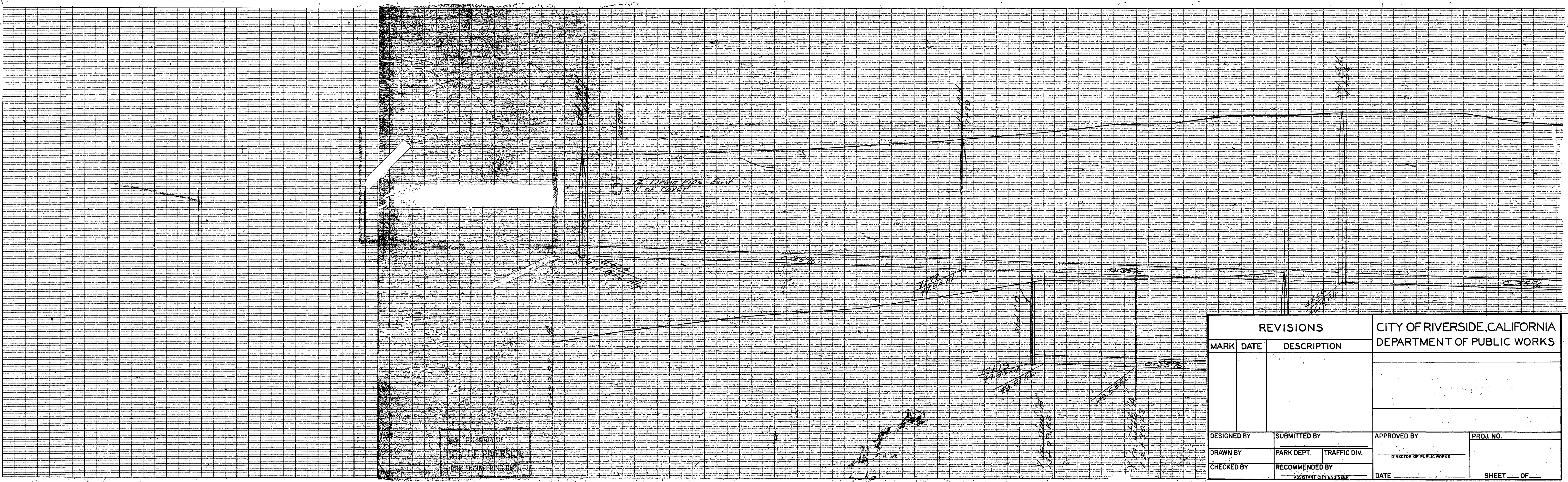
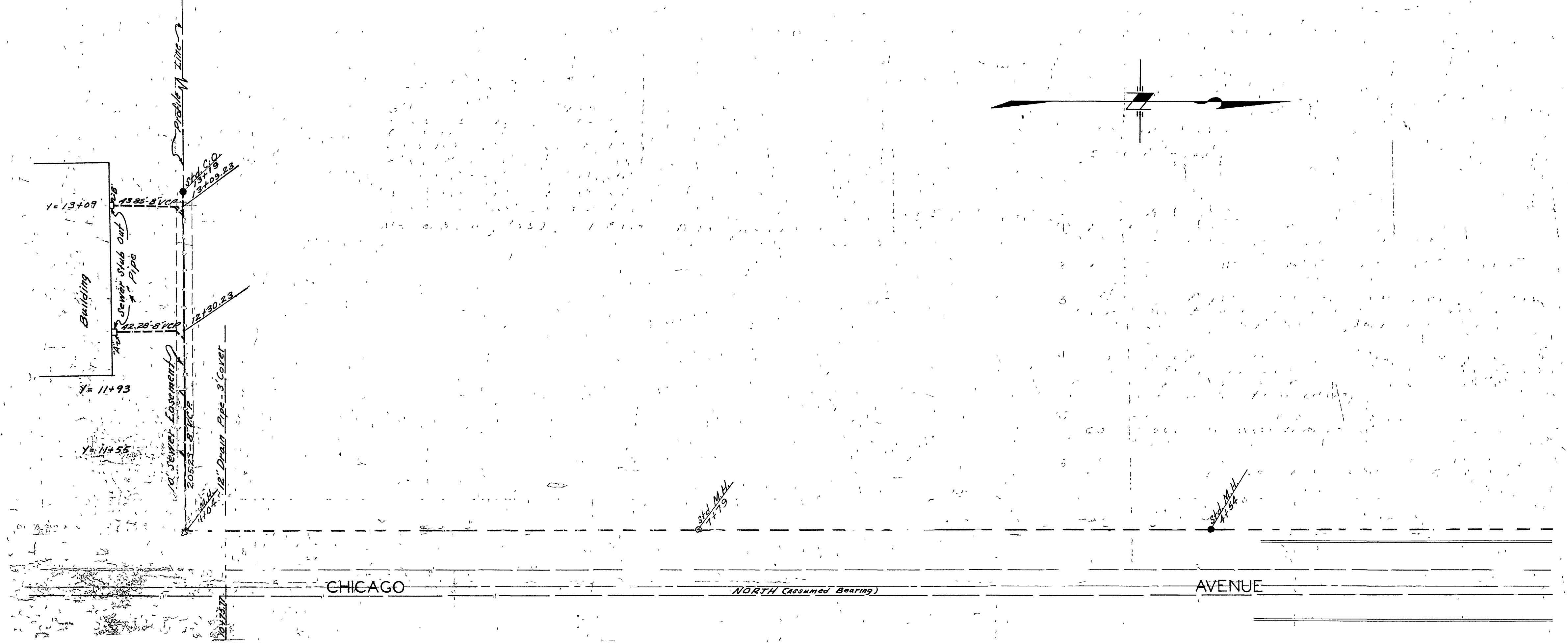
- ① The Contractor shall comply with all applicable portions of Standard Specifications No. 461
- ② Pipe shall be bedded per Std. Dwg. # 452 Case II
- ③ Pavement Replacement for the traveled way shall be 2 1/2" A.C. over backfill, compacted per Section 4-07 of Standard Specifications. 8" of I.B.M. will be required.
- ④ A Temporary dust cap surfacing per paragraph 7-18 of Standard Specifications shall be constructed over the sewer trench except where the 2 1/2" A.C. is constructed in the traveled way.
- ⑤ Contractor shall exercise special care when constructing sewer line to protect existing palm trees.
- ⑥ Contractor shall verify location of 5 KV underground cable with Utilities Dept. before starting construction.



B.M. 5' E.L. in N.E. curb return  
8th & Chicago E.L. 957.62  
F.B. X-3/22 Ref. Plan #1102  
Scale: Hor. 1" = 40'  
Vert. 1" = 4'



CHICAGO AVE. SEWER EXTENSION #1  
S'LY. TO TWELFTH ST. 1201  
William D. Jordan  
9-5-62  
S374



REVISIONS			CITY OF RIVERSIDE, CALIFORNIA DEPARTMENT OF PUBLIC WORKS	
MARK	DATE	DESCRIPTION		
DESIGNED BY		SUBMITTED BY	APPROVED BY	
DRAWN BY		PARK DEPT. TRAFFIC DIV.	DIRECTOR OF PUBLIC WORKS	
CHECKED BY		RECOMMENDED BY	DATE	PROJ. NO.
		ASSISTANT CITY ENGINEER		SHEET ___ OF ___