

TRACED FROM PRINT OF ORIGINAL
 B-23-62 H.Ball DEPT. PUB.WKS., CITY OF RIVERSIDE, CALIF.

SCALE: N 1" = 40'

UTILITIES LEGEND

- EXIST. WATER LINES
- NEW WATER LINE
- S.C. SERVICE CLAMP & CORPORATION STOP
- G.V. GATE VALVE & CONC. BOX TYPE #1
- C.S. CURB STOP & CONC. BOX
- EXIST. SANITARY SEWER
- NEW SANITARY SEWER
- M.H. EXIST. MANHOLE
- M.H. NEW JUNCTION MANHOLE
- CO. BURIED CLEANOUT
- S.C.O. TYPE "B" SURFACE CLEANOUT, TYPE "B"
- B.D. BUILDING DRAIN
- F.L. FLOW LINE
- GRAD. GRADIENT
- NEW FIRE HYDRANT
- EXIST. FIRE HYDRANT

NOTES:
 HOUSE SERVICE PIPE SHALL BE BROUGHT TO WITHIN 5' OF BLDG. & JOINED TO BUILDING SERVICE.
 ALL SEWER PIPE & FITTINGS 4" DIA. OR OVER SHALL BE VITRIFIED CLAY PIPE. ALL FITTINGS 4" DIA. OR SMALLER SHALL BE CAST IRON.
 SEWERS SHALL BE BROUGHT TO WITHIN 5' OF BLDG. & JOINED TO BLDG. DRAINS.

BUILDING SCHEDULE					
NO.	NO. REQ'D	DESIGNATION	TYPE	SIZE	PLAN NO.
①	2	RECREATION BLDG. (MOD)	RB-A-T	20'x100'	TO 700-5800
②	1	✓	RBC-A-T	37'x108'	TO 700-5890
③	1	✓	RB-C-T	58'x112'	TO 700-5880
④	1	SERVICE CLUB	SCPX-B-T	48'x112'	TO 700-5858
⑤	1	MESS HALL	M-M-T	20'x148'	TO 700-6400

LEGEND
 [Hatched Box] EXISTING CONSTRUCTION
 [Solid Box] NEW CONSTRUCTION UNDER THIS CONTRACT

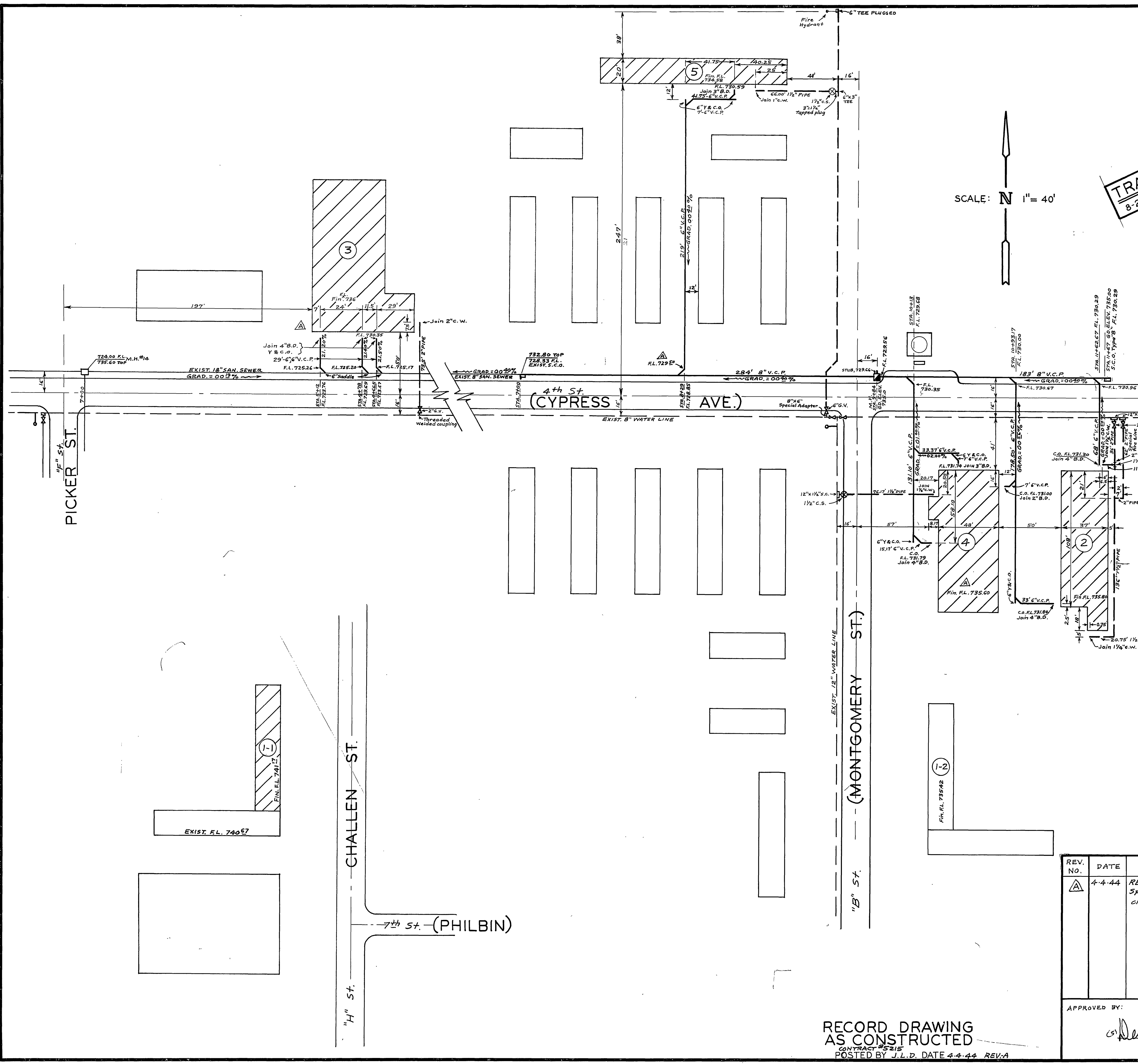
JOB NO. CAMP ANZA T(5-6)
 MILITARY CONSTRUCTION
 SAN BERNARDINO-MOJAVE AREA, SAN BERNARDINO, CALIF.
CAMP ANZA
 ARLINGTON, CALIFORNIA
ADDITIONAL CONSTRUCTION
SANITARY SEWER & WATER DISTR. PLAN
 SCALE: 1 IN. = 40 FT. IN 9 SHEETS SHEET NO. 3
 U. S. ENGINEER OFFICE, LOS ANGELES, CALIF., JUNE 1943

REV. NO.	DATE	REVISION	REV.	CHK.	APP.
△	4-4-44	REVISED AS CONSTRUCTED Special Fire Line Added and change in dimensions.	J.L.D.	I.S.	

APPROVED BY: *(Signature)* MAJOR C.E. AREA ENGINEER
 AREA DWG. NO. SBM 11-10 REV. 4
 DATE JUNE 19, 1943

FILE NO.	DRAWN	TRACED	CHECKED	TO ACCOMPANY SPECIFICATIONS
	D.E.W.			DATED 6-24-43

RECORD DRAWING
 AS CONSTRUCTED
 CONTRACT #5215
 POSTED BY J.L.D. DATE 4-4-44 REV. A



NOTE:
 THIS WAS TRACED FROM A VERY FADED PRINT.
 PENCILED ADDITIONS ON THE PRINT WERE INTERPRETED
 AS FURTHER CONSTRUCTION AND WERE ALSO COPIED. (DASHED LINES)
 NOT SHOWN ON PRINT BUT ADDED TO THIS DRAWING ARE
 THE FOLLOWING:
 R/W & PROPERTY LINES OF CAMPANZA SUB. NO. 1.
 CURRENT STREET NAMES.
 CORWIN LN.

H.BALL, 11/30/62

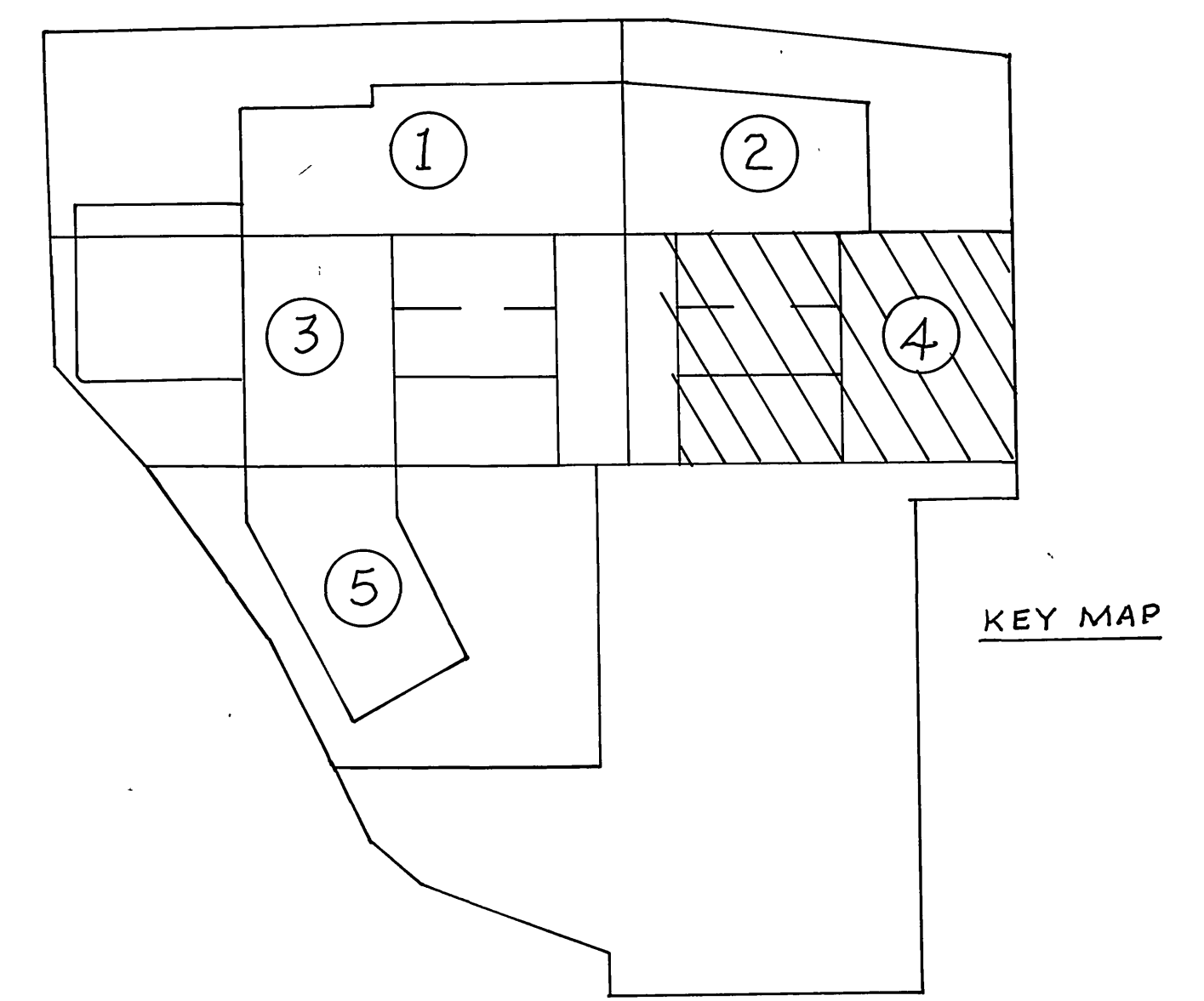
MILITARY CONSTRUCTION
ARLINGTON STAGING AREA
 • ARLINGTON, CALIF.
 • SEWAGE COLLECTION SYSTEM

SCALE: 1 IN. = 100 FT. 17 SHEETS SHEET NO. 6
 GRAPHIC SCALE FEET
 U. S. ENGINEER OFFICE, LOS ANGELES, CALIF.

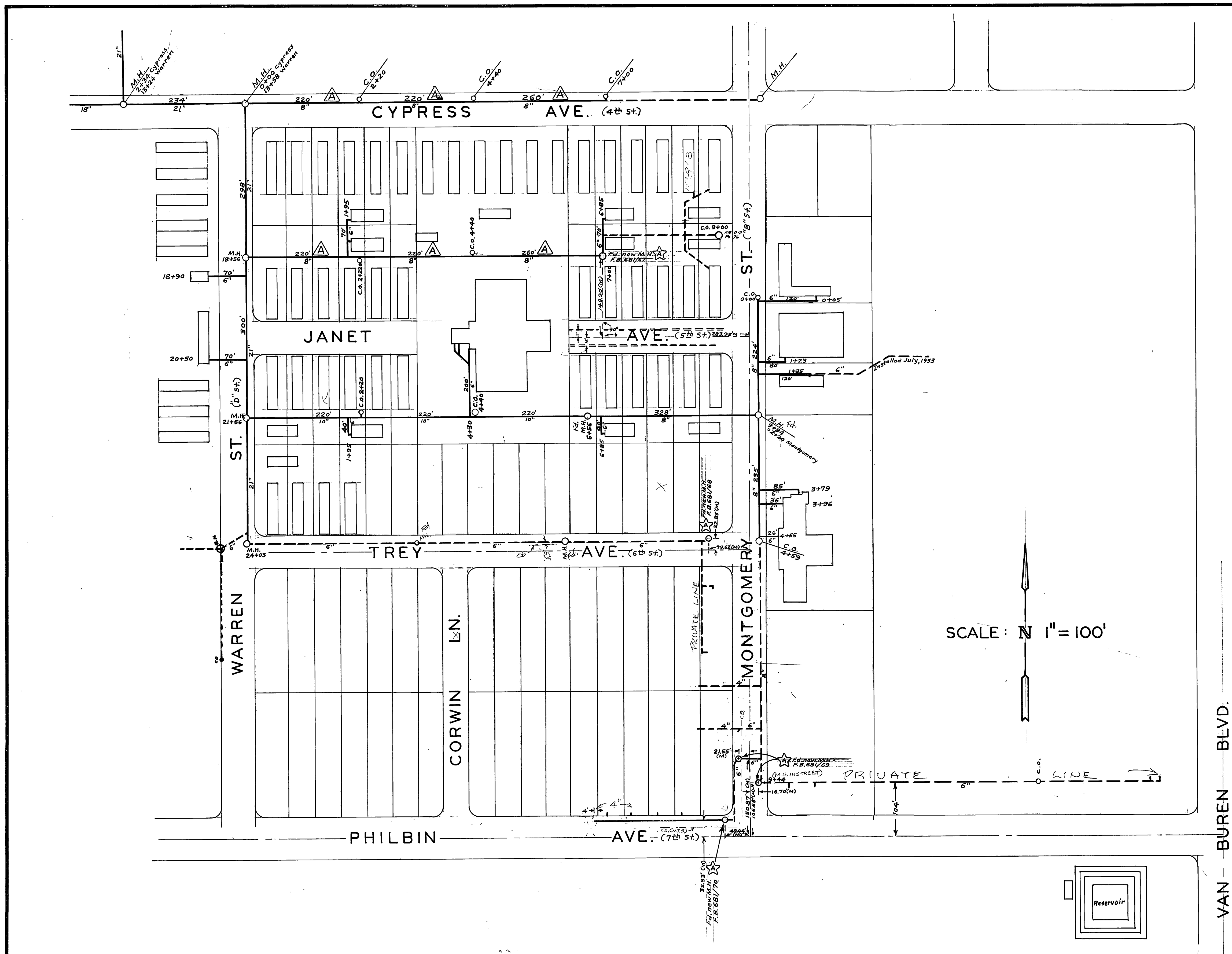
SUBMITTED BY *W. Thompson* APPROVED BY *Edwin C. Helton*
 LT. COL. COLONEL

FILE NO. 583/25	DRAWN	TRACED	CHECKED	TO ACCOMPANY
REV. A				DATED

REV. NO.	DATE	REVISION	REV.	CHK.	APP.
△	7-30-42	Changed Grade & Size of Pipe	G.M.	G.H.M.	G.J.W.



SCALE: N 1" = 100'



REVISIONS				CITY OF RIVERSIDE, CALIFORNIA DEPARTMENT OF PUBLIC WORKS	
MARK	DATE	DESCRIPTION			
☆		As Built or Found			
				CAMP ANZA SEWERS	
DESIGNED BY	SUBMITTED BY		APPROVED BY		DATE
DRAWN BY	PARK DEPT.	TRAFFIC DIV.			
CHECKED BY	RECOMMENDED BY				

S-375

SHEET 2 OF 17