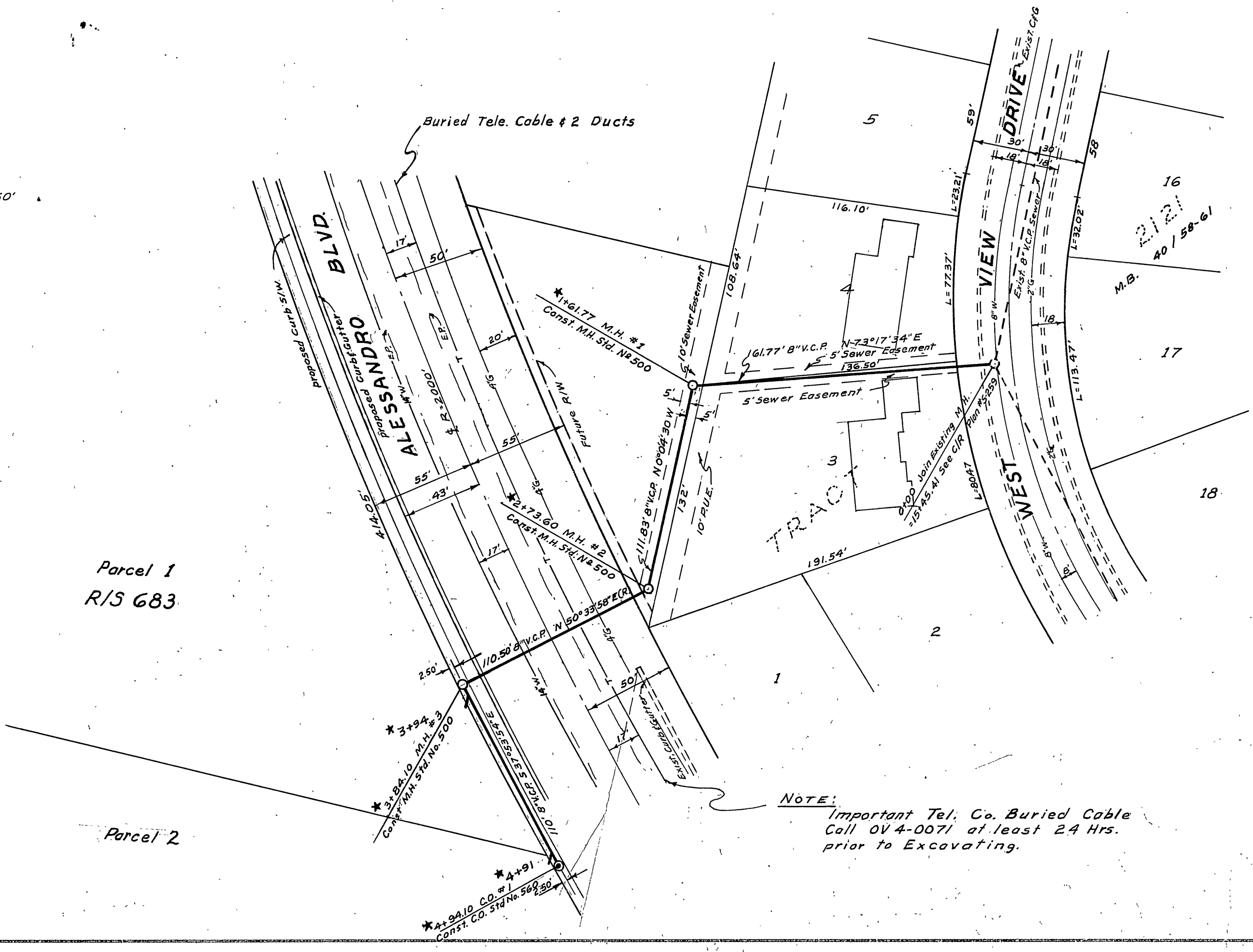
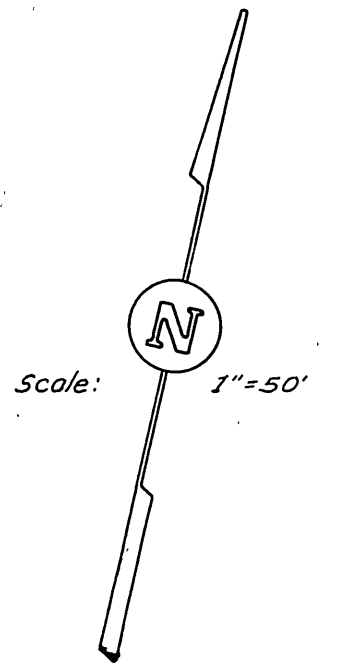


SCALE Horiz. 1"=50'
 VERT. 1"=5'

PROFILE	
NO.	DATE



GENERAL NOTES

- Construction shall be in accordance with the City of Riverside Department of Public Works Specifications No. 461 and Standard Drawings.
- Pipe shall be bedded Case II Standard Drawing No. 452.
- Location of wyes to be determined in the field.

QUANTITY ESTIMATE	
8" V.C.P. Sewer	4+94.10 Lin. Ft.
Standard N ^o . 500 Manhole	3 Ea.
Standard N ^o . 560 Cleanout	1 Ea.
4" Wye	2 Ea.

B.M. Elev. 1328.57
 Nail Tin painted white in existing pavement Alessandro Blvd. at the West line Sec. 6, T35, R4W, S.B.B.M.

REVISION	
MARK	DATE
★	12-21-62
	As Built, H. Ball

ALBERT A. WEBB ASSOCIATES
 CIVIL ENGINEERS - RIVERSIDE, CALIFORNIA
 APPROVED: *Albert A. Webb* DATE 6/19/62
 R.C. 9876

CITY OF RIVERSIDE, CALIFORNIA
DEPARTMENT OF PUBLIC WORKS

SANITARY SEWER
RIS 683
 Alessandro Blvd. Easement
KENNETH MILLER

APPROVED BY: *Kenneth Miller*
 DIRECTOR OF PUBLIC WORKS
 DATE 10-16-62
 SHEET 1 OF 1

PLAN	
NO.	DATE