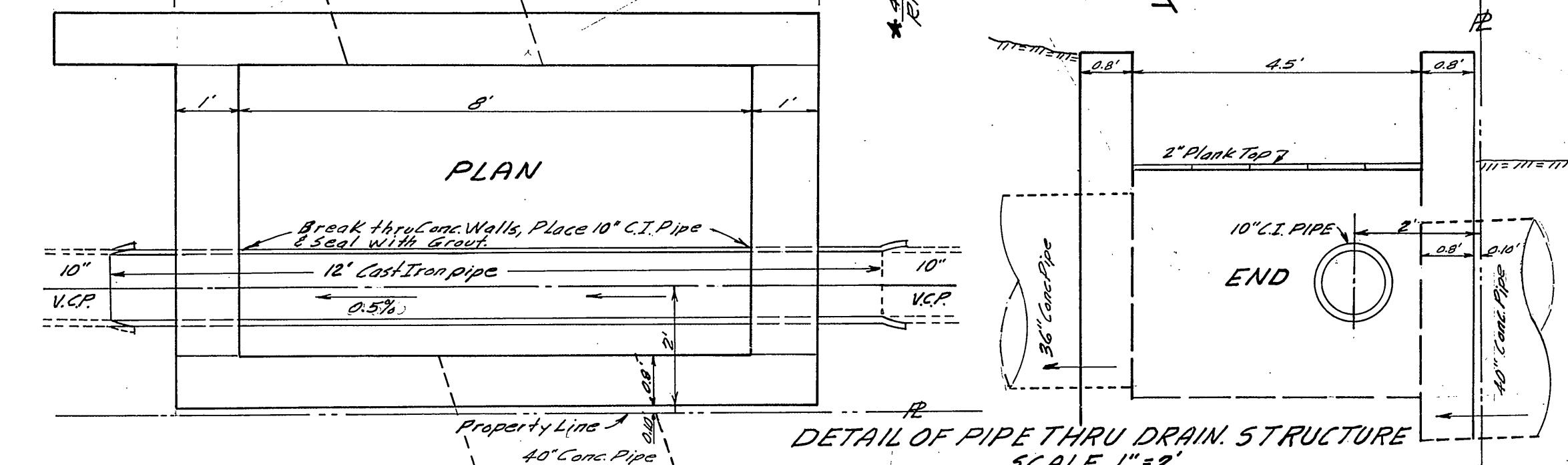


BENCHMARK:
 USGS Brass Cap in Conc. Base 1x1' N. Side Columbia 30'
 W. of A.T.F.S.F. RR. W. Bd. M Elev. 892.872

T.B.M. "1"
 Top 9 1/4" IP, SW Cor. Lot 76 Elev. 890.46

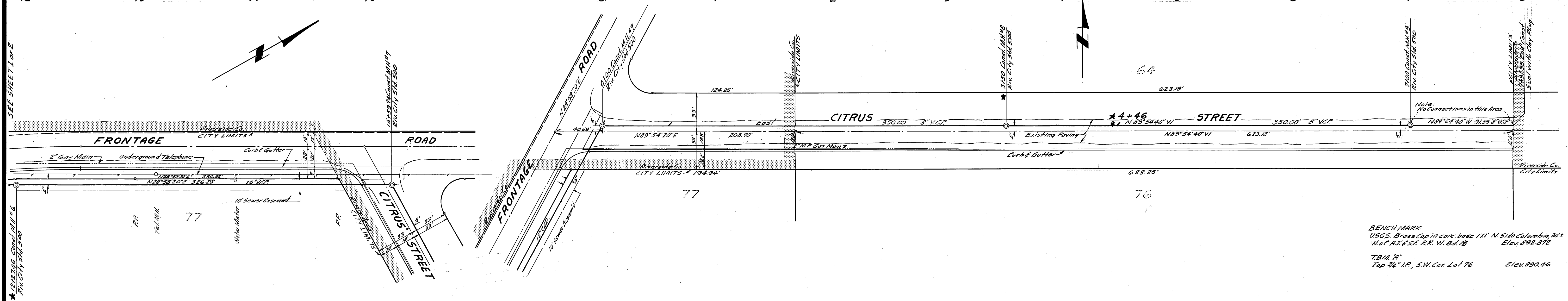
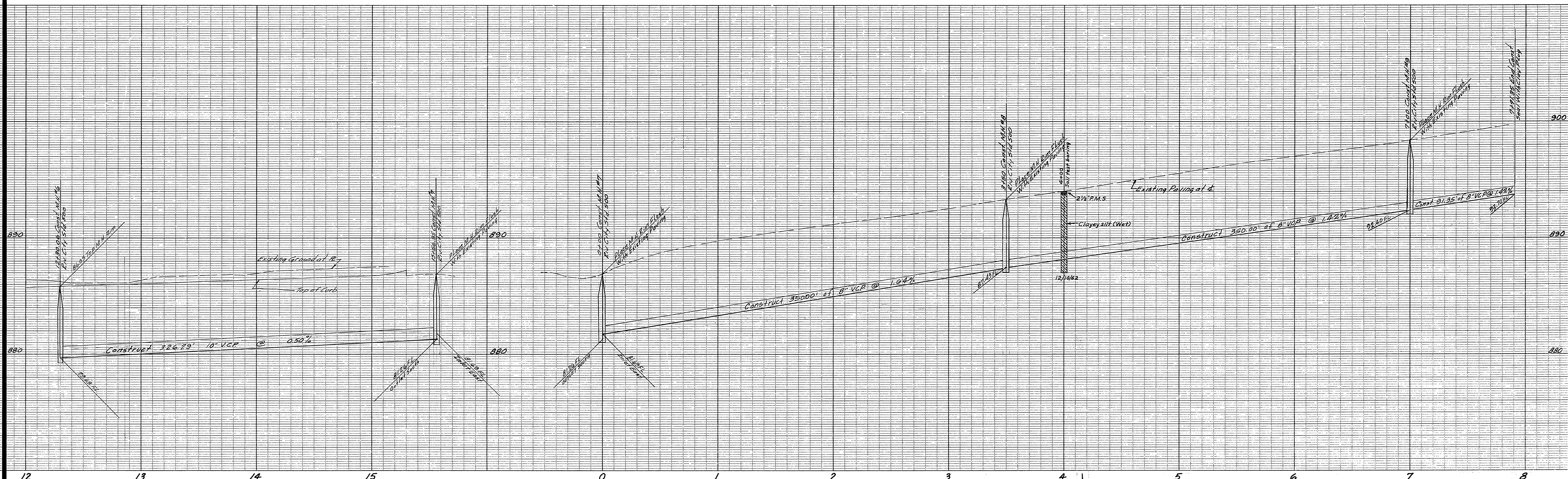
PRIVATE ENGINEER'S NOTICE TO CONTRACTORS
 Private and Public utilities line if shown on these plans reflect available record data. The contractor shall be responsible for locating ALL lines affecting this work and for any damage or protection of these lines and shall notify the Utility line owners prior to construction.



IRRIGATION DIV. P.U.D. DATE <i>Howard R. Creason</i> 10-24-62	J. F. DAVIDSON-CIVIL ENGINEER R.E. NO. 862 RIVERSIDE, CALIFORNIA APPROVED BY <i>J. Davidson</i> DATE 9-28-62
	CITY OF RIVERSIDE, CALIFORNIA DEPARTMENT OF PUBLIC WORKS SEWER PLAN & PROFILE EAST LA CADENA FRONTAGE ROAD PALMYRITA TO CITRUS HORIZ. SCALE 1"=40' VERT. SCALE 1"=4' APPROVED BY <i>W. J. ...</i> Director of Public Works NO. 5-381 DATE 12/14/62

* = As built. 7.19.68. G.S. FB 784-27

SEE SHEET 2 OF 2



BENCH MARK:
 USGS. Brass Cap in concrete base 1X1' N Side Columbia 30'±
 W of AT&SF RR. W.B.D.M. Elev. 892.872

T.B.M. #1
 Top 34" I.P., S.W. Cor. Lot 76 Elev. 890.46

REVISIONS		
MARK	DATE	DESCRIPTION

J. F. DAVIDSON - CIVIL ENGINEER
 R.E. NO. 662
 RIVERSIDE, CALIFORNIA

APPROVED BY *J. F. Davidson* DATE 9-28-62

CITY OF RIVERSIDE, CALIFORNIA
DEPARTMENT OF PUBLIC WORKS

SEWER PLAN & PROFILE
EAST
LA CADENA FRONTAGE ROAD
& CITRUS STREET
800' EAST FROM LA CADENA

SCALE: PLAN 1"=40' PROFILE 1"=4'

DESIGNED BY: *J. F. Davidson* CHECKED BY: *wjg*

DRAWN BY: *A. R. Thiel*

NO. 5-381

12/14/62

2 2

* As built. 7.19.63. G.S.

FB 784-27