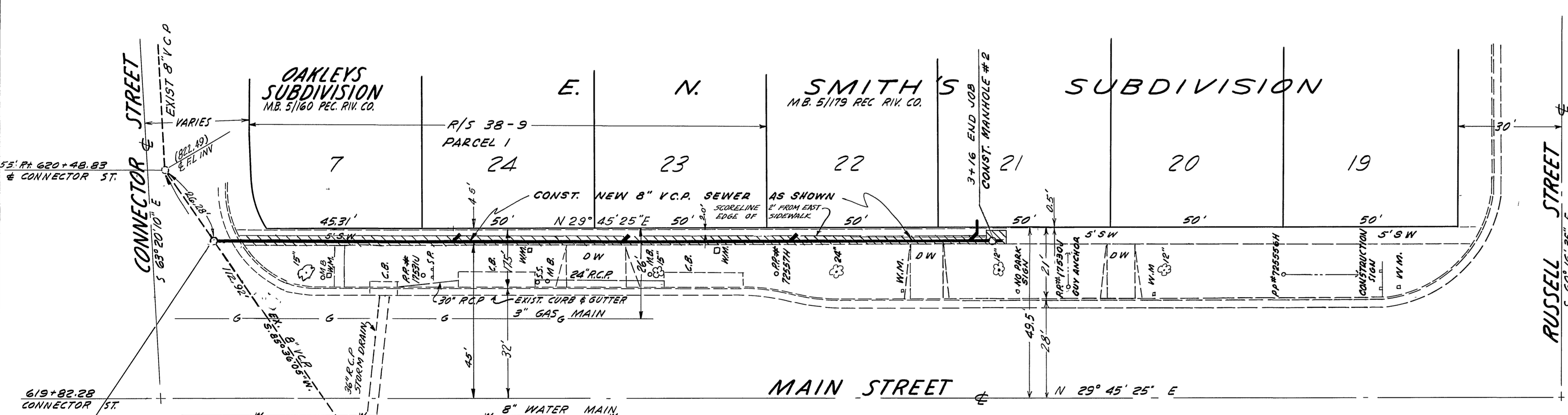
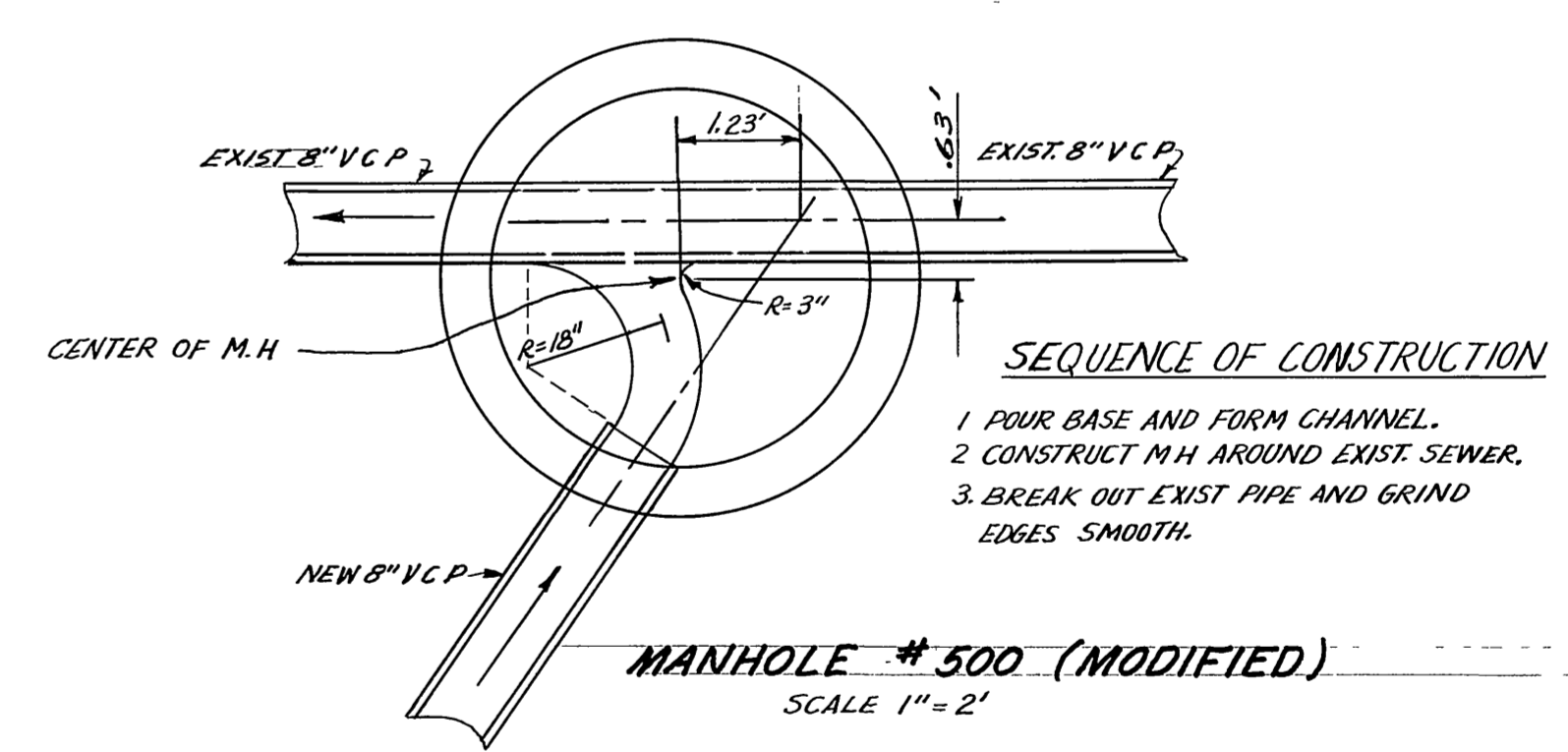


PROFILE SCALES
 HORIZ. 1" = 20'
 VERT. 1" = 2'



B.M. CITY OF RIVERSIDE DATUM. B.M. IS S. & L.
 TOP OF CURB WEST SIDE OF MAIN STREET AT
 THE Q OF RUSSELL STREET PROD.
 ELEV. 830.92

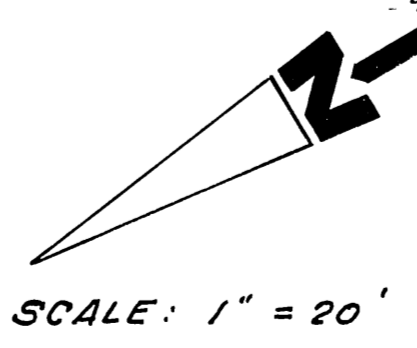


CONSTRUCT M.H. #1 AROUND
 EXIST. 8" V.C.P. MAIN-ORANGE
 CONNECTOR SEWER CHANNEL
 BOTTOM PER STD. DIVS. #500
 MODIFIED AS SHOWN PER
 DETAIL HEREON

LEGEND

TREE (SIZE NOTED)	○ 3/8"
MAIL BOX	○ M.B.
WATER METER	○ W.M.
CATCH BASIN	○ C.B.
POWER POLE (WITH #)	PP #
SIGN POST	SP
STOP SIGN	S.S.
CONC. DRIVEWAY	D.W.
CONC. SIDEWALK	S.W.

- GENERAL NOTES
1. MANHOLE #1 AND MANHOLE #2 TO BE CONSTRUCTED PER CITY OF RIVERSIDE STD. DWG. #500
 2. REMOVE EXIST. TREE AND SIDEWALK AS NECESSARY.
 3. CONST. STD. "Y" @ 0+60 AND EVERY 50' TO END.
 4. REMOVE & REPLACE S/W MARKED ON A SAWCUT LINE



PREPARED IN THE OFFICE OF
 BAKER, PAFORD & ASSOCIATES
 615 SOUTH RAYMOND AVE
 FULLERTON, CALIFORNIA
 PHONES: TR. 9510 MA. 8-5192
 P.F. PFEILER R.C.E. 12507 DATE 11-30-62

REVISIONS			CITY OF RIVERSIDE, CALIFORNIA DEPARTMENT OF PUBLIC WORKS	
MARK	DATE	DESCRIPTION		
			PLAN & PROFILE OF SEWER LOCATION IN MAIN STREET FROM 213' SO. OF TO MAIN-ORANGE CONNECTOR ROAD R-8-601	
DESIGNED BY C.H.S.V.	SUBMITTED BY W.D.G.	APPROVED BY [Signature]	PROJ. NO. S-396	
DRAWN BY Z.B.W.	PARK DEPT. TRAFFIC DIV.	DIRECTOR OF PUBLIC WORKS	DATE 1-2-63	
CHECKED BY W.D.G.	RECOMMENDED BY [Signature]	ASSISTANT CITY ENGINEER	SHEET 1 OF 1	

*Sewer will not be to be 4' of this pipe
 Notified by 1-2-63 by 17-4-63 1-3-63
 P.F.P.*