

NOTES:

All construction shall be in accordance with Standards and Specifications No. 461 of the City of Riverside, Department of Public Works. Pipe shall be bedded per card II, Standards Drawing No. 452.

It shall be the responsibility of the Contractor to clear the Right of Way in accordance with the provisions of law as it affects each utility including irrigation lines and appurtenances, and at no extra cost to the City of Riverside.

All laterals to be constructed in accordance with Riverside City Standard No. 562.

Location of wyes and laterals to be determined in the field.

Joints in vitrified clay pipe sewers shall conform to A.S.T.M. Standard C-425-60T, or the latest revision thereto.

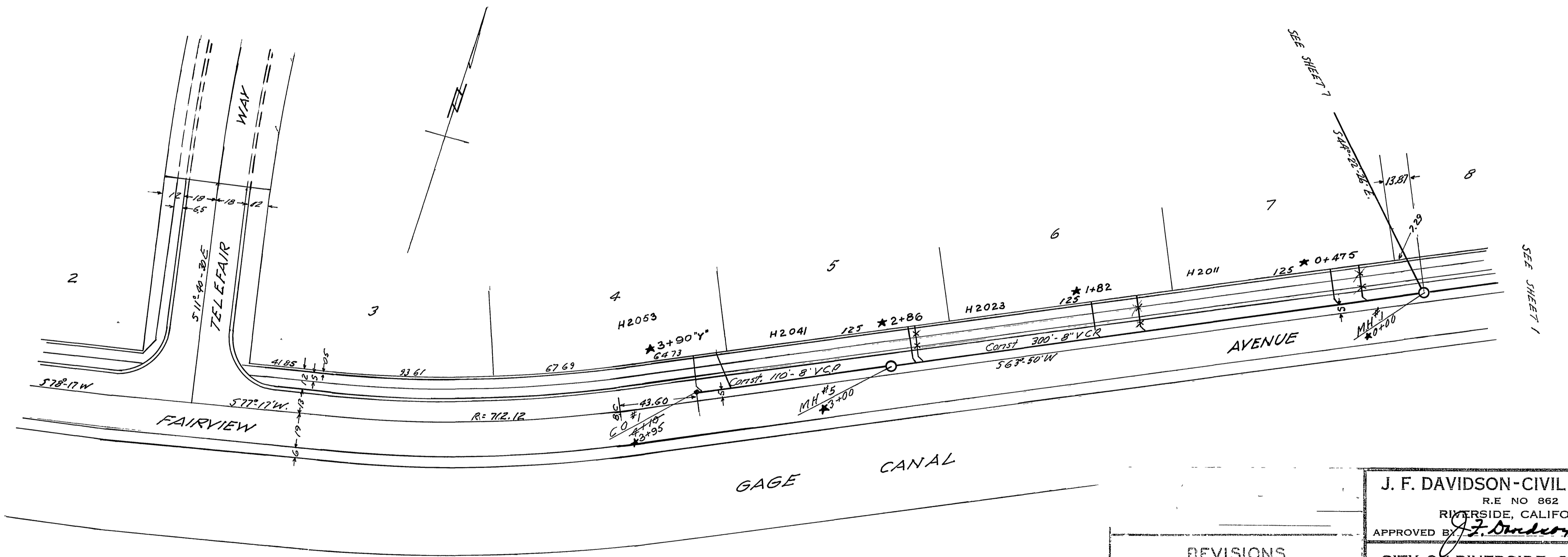
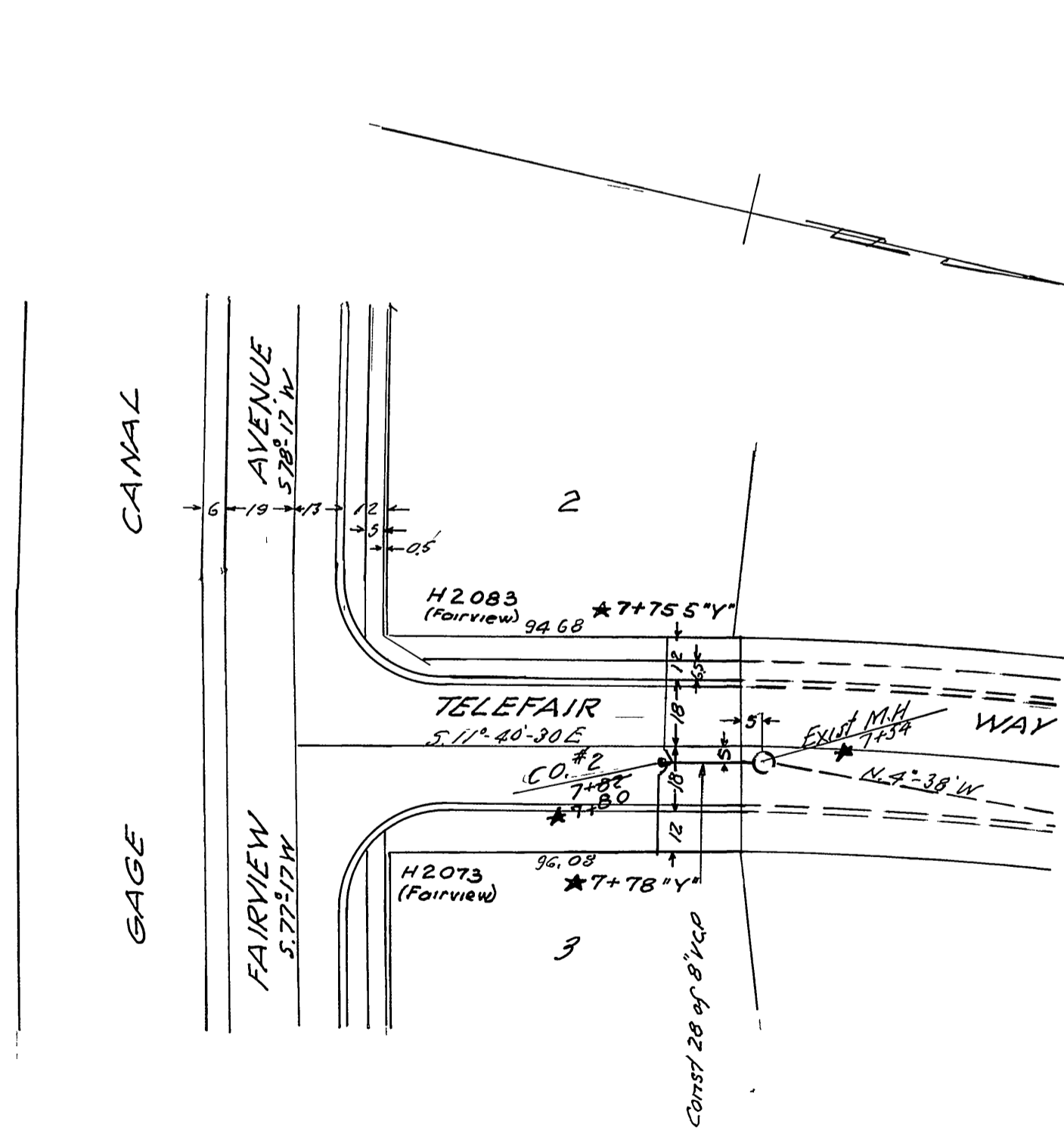
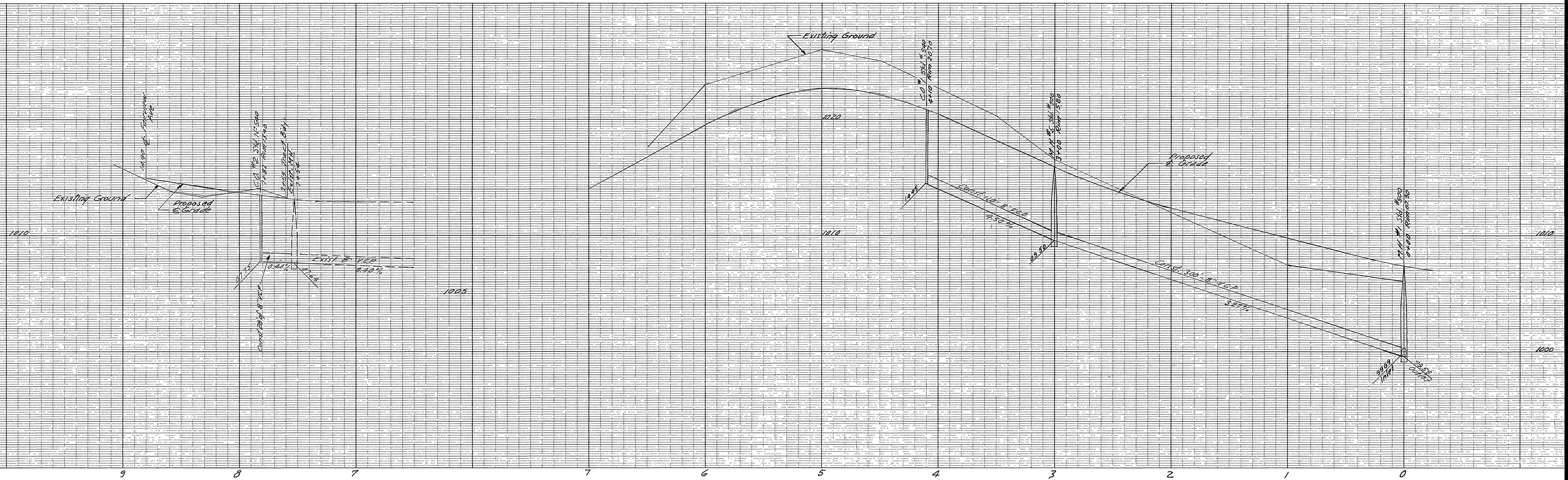
BENCH MARK'

TBM "A" 1" IP at NE Cor of Lot 4 of Church Subdivision, M.B. 4-55, Rec of Riv Co
Elev. 1015.54-

TBM "B" Spike in Power Pole No. 7312-J at Sky end of King Street on Wly Side
Elev. 1041.46

* = As built 9.10.63. G.S

J. F. DAVIDSON-CIVIL ENGINEER RE NO 862 RIVERSIDE, CALIFORNIA APPROVED BY <i>J. Davidson</i> DATE 1-22-63	
CITY OF RIVERSIDE, CALIFORNIA DEPARTMENT OF PUBLIC WORKS	
SEWER PLAN & PROFILE FAIRVIEW AVENUE TRACT 2308 HORIZ. SCALE 1" = 40' VERT. SCALE 1" = 4'	
APPROVED BY <i>J. Davidson</i> Director of Public Works DATE 3-25-63	
DESIGNED BY DRAWN BY RECOMMENDED BY	CHECKED BY <i>W.D.G.</i> ASSISTANT CIVIL ENGINEER
NO. S-397 SHEET 1 OF 7	



BENCH MARK
 T.B.M. "A" Top of 1" Iron pipe at the NE Cor. of Lot 4 of Church Subdivision MB 6-55 Rec of Riv Co Elev 1015.54
 T.B.M. "B" Spike in power pole N^o 7312-J at the SW end of King Street on Wly Side Elev 1041.46

NOTE: Lot 1 is to have a 4" sewer lateral connection to the existing 8" sewer in Glenhaven Ave.

* = As built 9/11/68 G.S.

REVISIONS		
MARK	DATE	DESCRIPTION

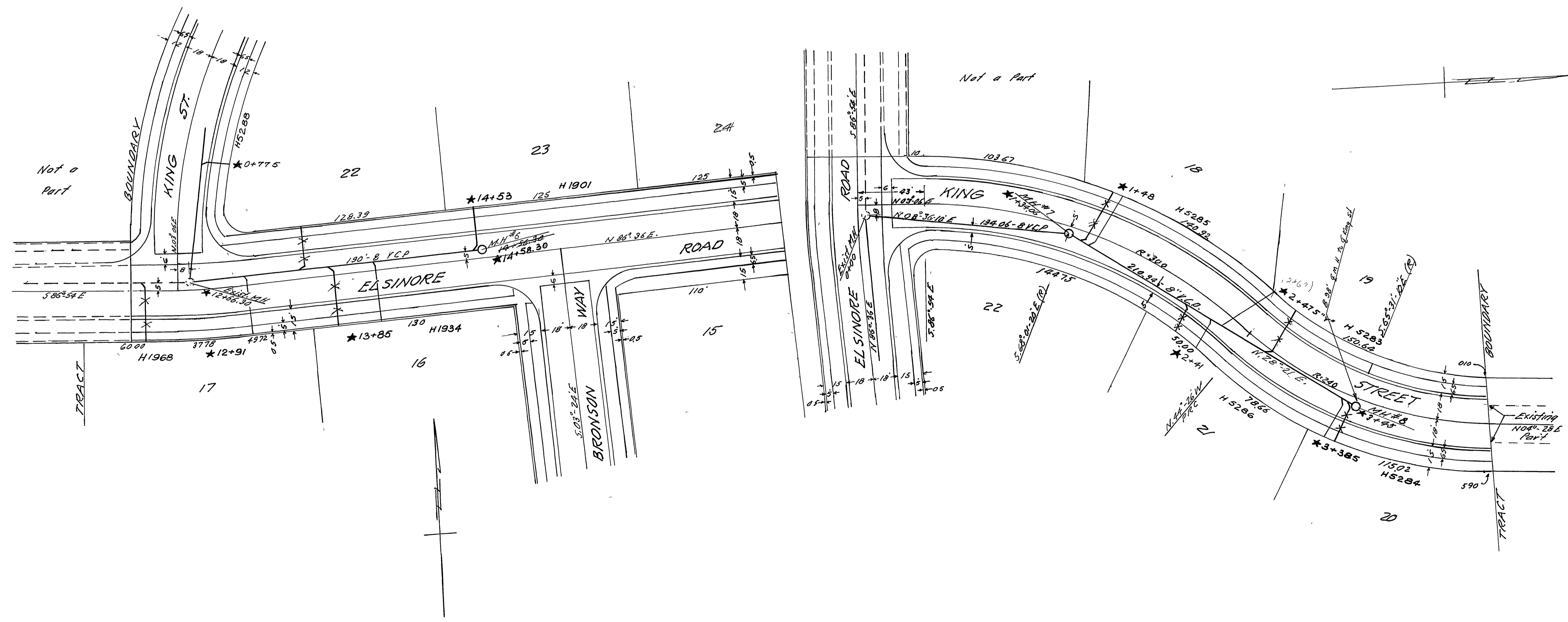
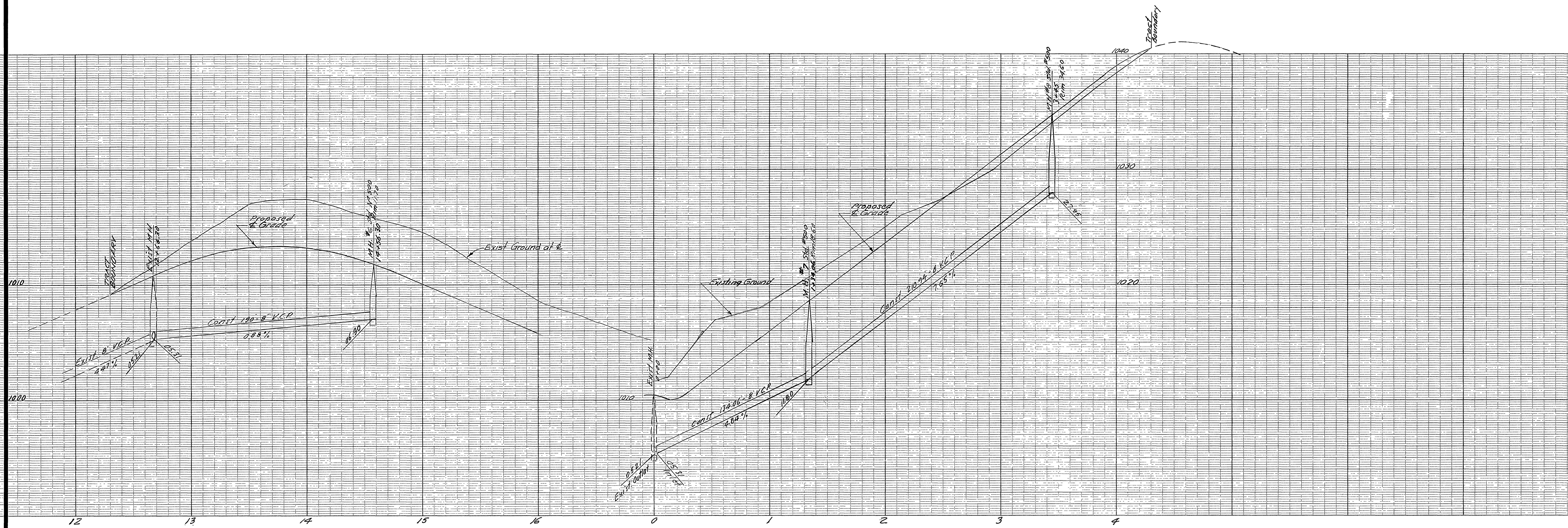
J. F. DAVIDSON-CIVIL ENGINEER
 R.E. NO. 862
 RIVERSIDE, CALIFORNIA
 APPROVED BY *J. Davidson* DATE 1-22-63

CITY OF RIVERSIDE, CALIFORNIA
 DEPARTMENT OF PUBLIC WORKS

SEWER PLAN & PROFILE
FAIRVIEW AVE - TELEFAIR WAY

TRACT 2308
 HORIZ. SCALE 1" = 40' VERT. SCALE 1" = 4'

DESIGNED BY *J.F.D.* CHECKED BY *J.F.D.* APPROVED BY *J.F.D.*
 DRAWN BY *J.F.D.* DIRECTOR OF PUBLIC WORKS
 DATE 1-22-63 NO. S-397 SHEET 2 OF 7

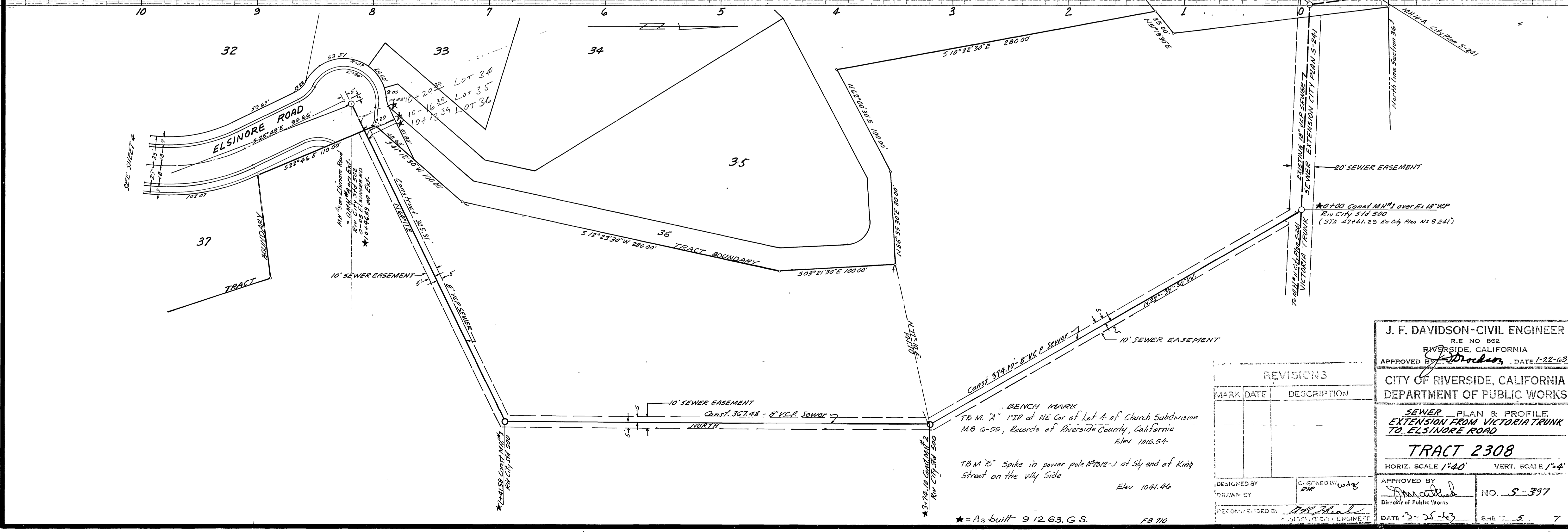


BENCH MARK
 T.B.M. 'A' Top of 1" IP at the NE Cor of Lot 4 of Church Subdivision
 MB G-55 - Rec. En. Co. Elev 1015.54
 T.B.M. 'B' Spike in Power Pole No 7312-J at the SW end of King
 Street on Why Side Elev 1041.46

REVISIONS		
MARK	DATE	DESCRIPTION

J. F. DAVIDSON-CIVIL ENGINEER
 R.E. NO 862
 RIVERSIDE, CALIFORNIA
 APPROVED BY *J. F. Davidson* DATE 1-22-63
CITY OF RIVERSIDE, CALIFORNIA
DEPARTMENT OF PUBLIC WORKS
 SEWER PLAN & PROFILE
ELSINORE ROAD-KING STREET
TRACT 2308
 HORIZ. SCALE 1"=40' VERT. SCALE 1"=4'
 DESIGNED BY
 DRAWN BY
 RECOMMENDED BY *Michael* ASSISTANT CIVIL ENGINEER
 CHECKED BY *WDB*
 APPROVED BY *J. F. Davidson* Director of Public Works
 DATE 1-25-63
 NO. 5-397
 SHEET 3 OF 7

*As built 9 1163 GS
 FB 710



J. F. DAVIDSON-CIVIL ENGINEER
 R.E. NO 862
 RIVERSIDE, CALIFORNIA
 APPROVED BY: *J. Davidson* DATE 1-22-63

CITY OF RIVERSIDE, CALIFORNIA
 DEPARTMENT OF PUBLIC WORKS

SEWER PLAN & PROFILE
EXTENSION FROM VICTORIA TRUNK
TO ELSINORE ROAD

TRACT 2308

HORIZ. SCALE 1"=40' VERT. SCALE 1"=4'

DESIGNED BY: *J.F. Davidson* CHECKED BY: *PKP*
 DRAWN BY: *PKP*
 RECOMMENDED BY: *J.F. Davidson*

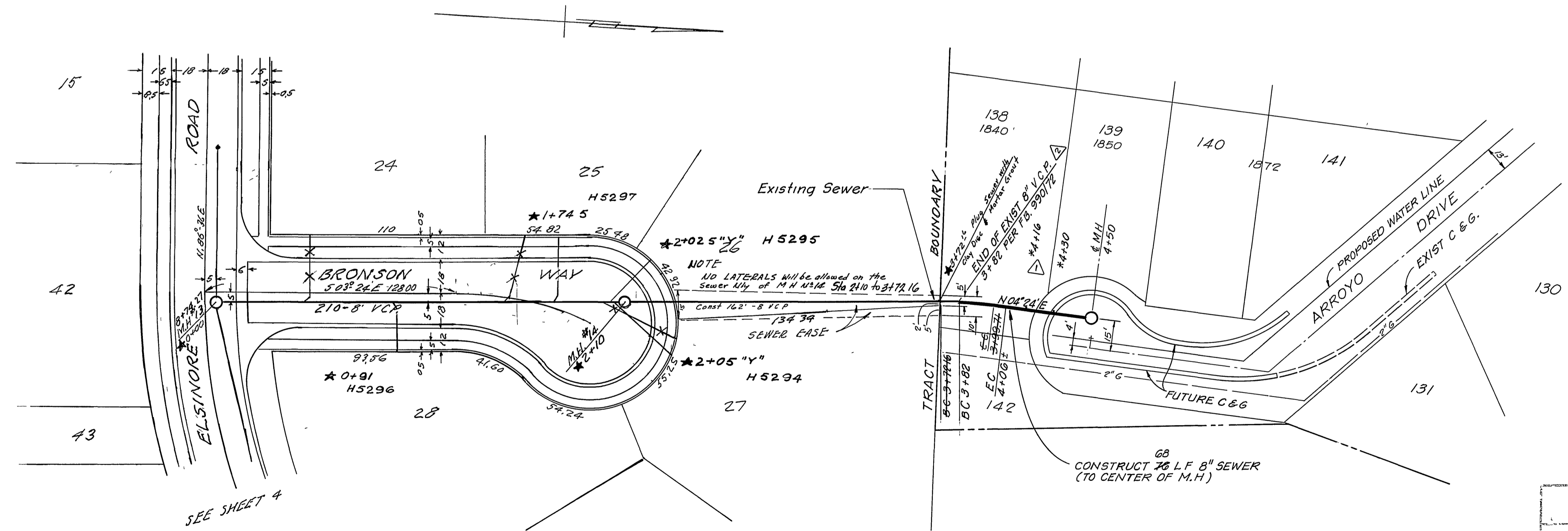
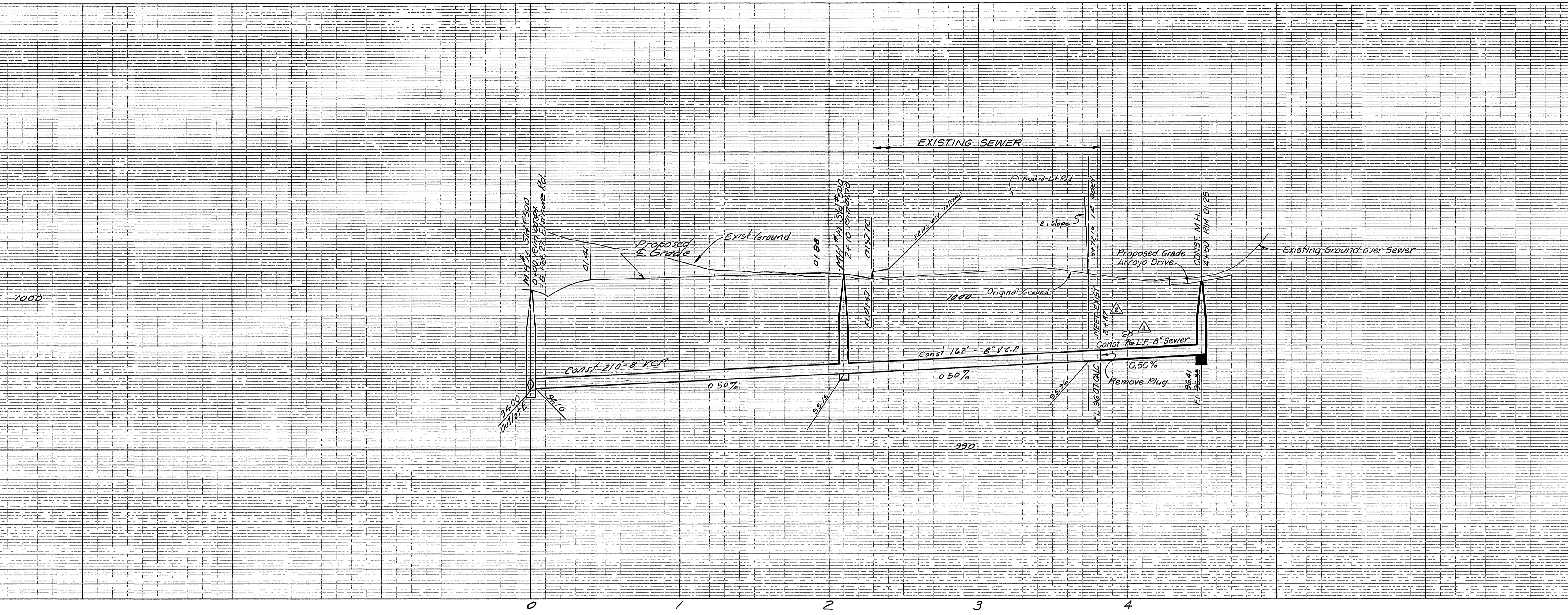
APPROVED BY: *J.F. Davidson*
 Director of Public Works

NO. 5-397
 DATE 1-22-63 SHEET 5 OF 7

BENCH MARK
 TBM "A" 1"IP at NE Cor of Lot 4 of Church Subdivision
 M.B. G-55, Records of Riverside County, California
 Elev 1015.54

TBM "B" Spike in power pole N70W-L at Sly end of King
 Street on the Wly Side
 Elev 1041.46

★ = As built 9 12 63. G.S. FB 710



SEWER CURVE DATA
 A = 755.00+5
 R = 200'
 L = 27.55'
 T = 13.60'

* AS BUILT 8-76 KPT
 * = As built. 9 12 63. G.S.

BENCH MARK
 T.B.M. "A" 1"IP at NE Cor of Lot A of Church Subdivision
 M.B. G-55, Rec of Riv Co
 Elev. 1015.54

T.B.M. "B" Spike in power pole N^o 7312-J at Sly end of Kings
 Street on Wly Side
 Elev. 1041.46

- GENERAL NOTES:
1. Construction to be in accordance with Standard Specifications for Public Works Construction, 1973 edition and City of Riverside standard drawings.
 2. Construct manhole in accordance with std. dwg. no. 500. Pipe bedding to be in accordance with std. dwg. no. 452, Case I.
 3. 4" VCP laterals to be located by property owner and installed in accordance with std. dwg. no. 562.

MARK	DATE	DESCRIPTION
Δ	4/8/76	Added Sewer for 1840-90 Arroyo Drive. 7% Project. <i>Wily</i>
Δ	8/17/76	Changed Beg of Const to match End of Exist Pipe KPT <i>W</i>

APPROVED BY:
Wily
 CHIEF UTILITIES ENGINEER, WATER
 DATE 4-5-76

J. F. DAVIDSON-CIVIL ENGINEER
 R.E. NO 862
 RIVERSIDE, CALIFORNIA
 APPROVED *J. Davidson* DATE 1-22-63

CITY OF RIVERSIDE, CALIFORNIA
 DEPARTMENT OF PUBLIC WORKS

SEWER PLAN & PROFILE
 BRONSON WAY
 TRACT 2308

HORIZ. SCALE 1" = 40' VERT. SCALE 1" = 4'

APPROVED BY
Davidson
 Director of Public Works

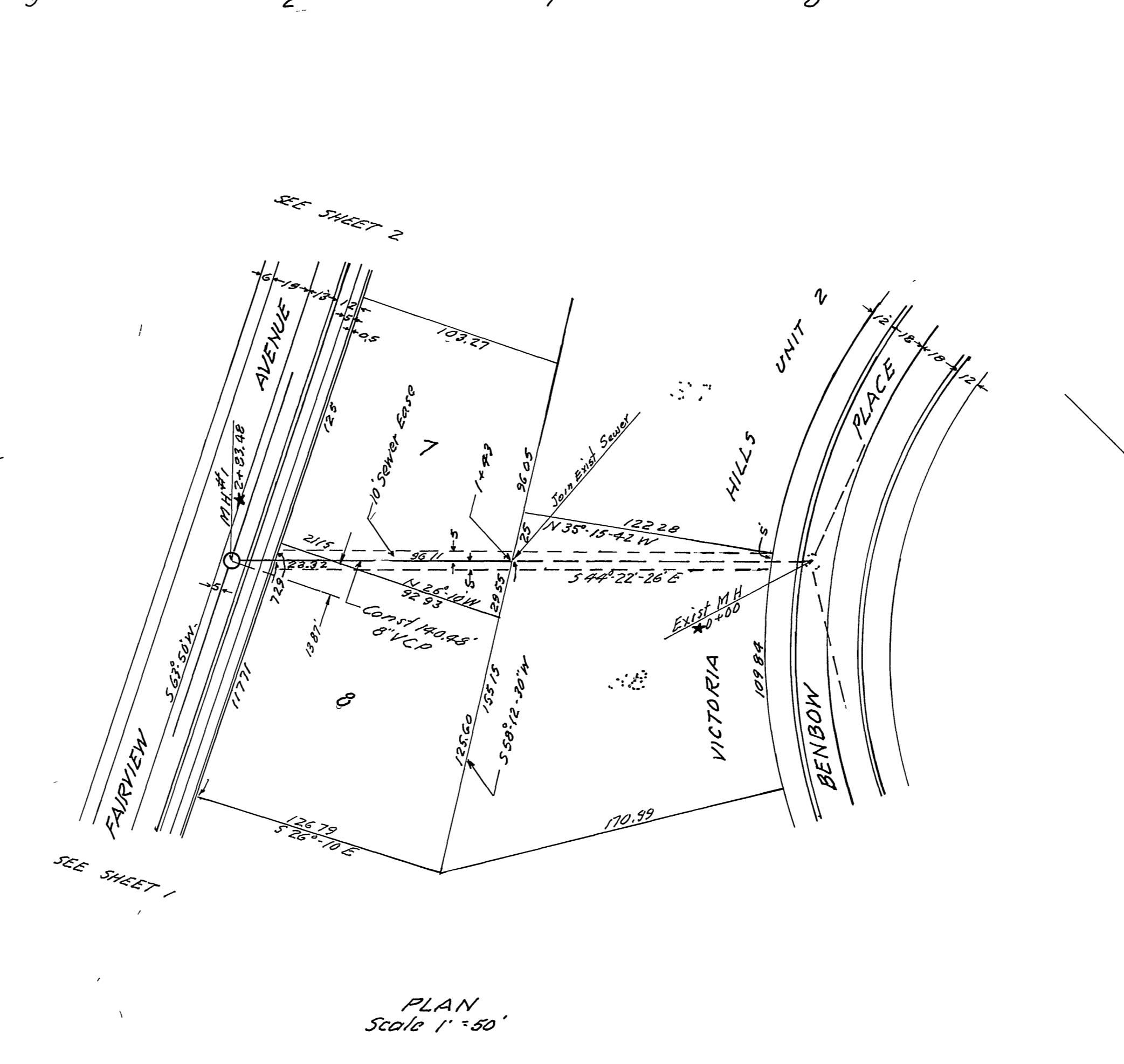
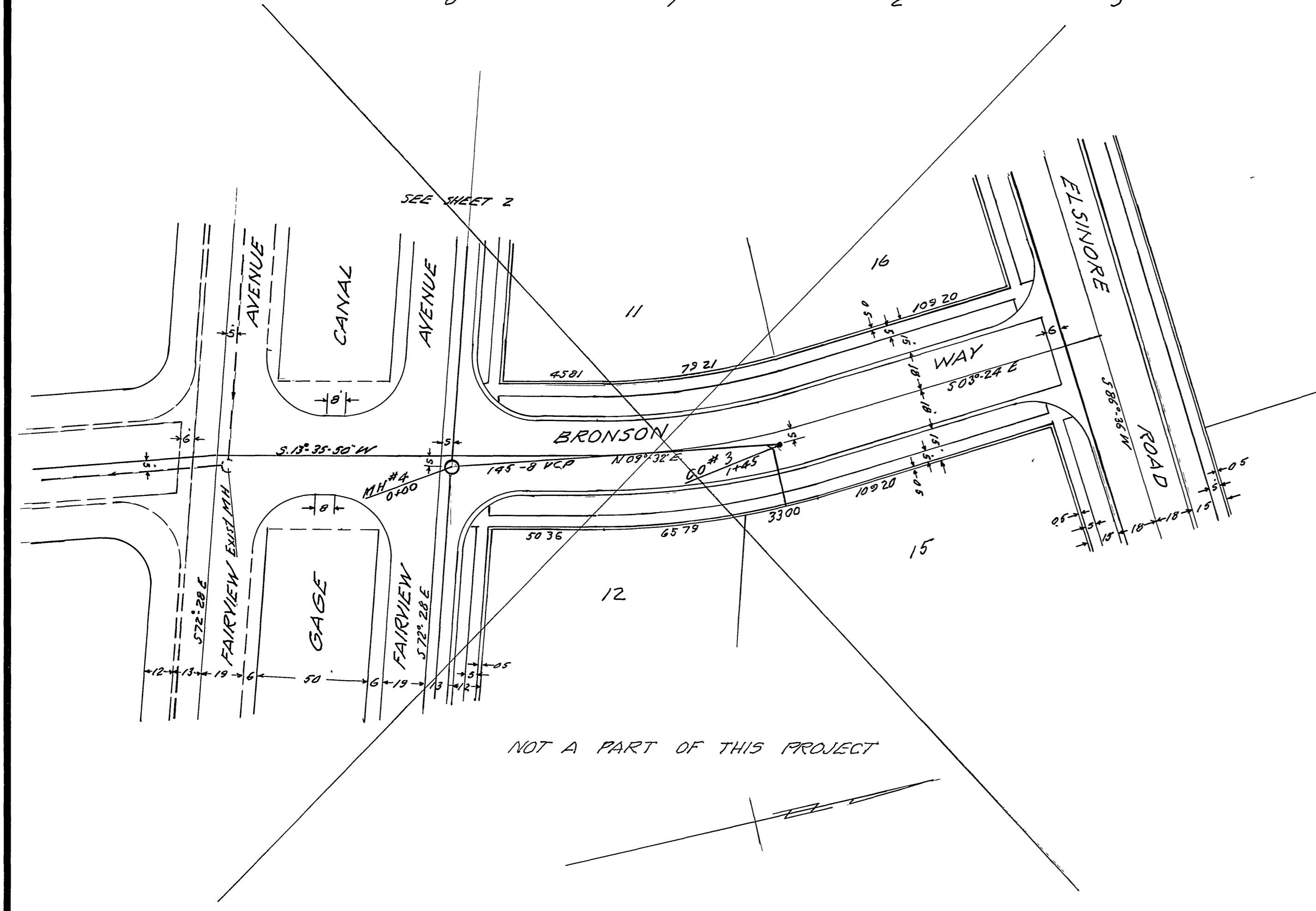
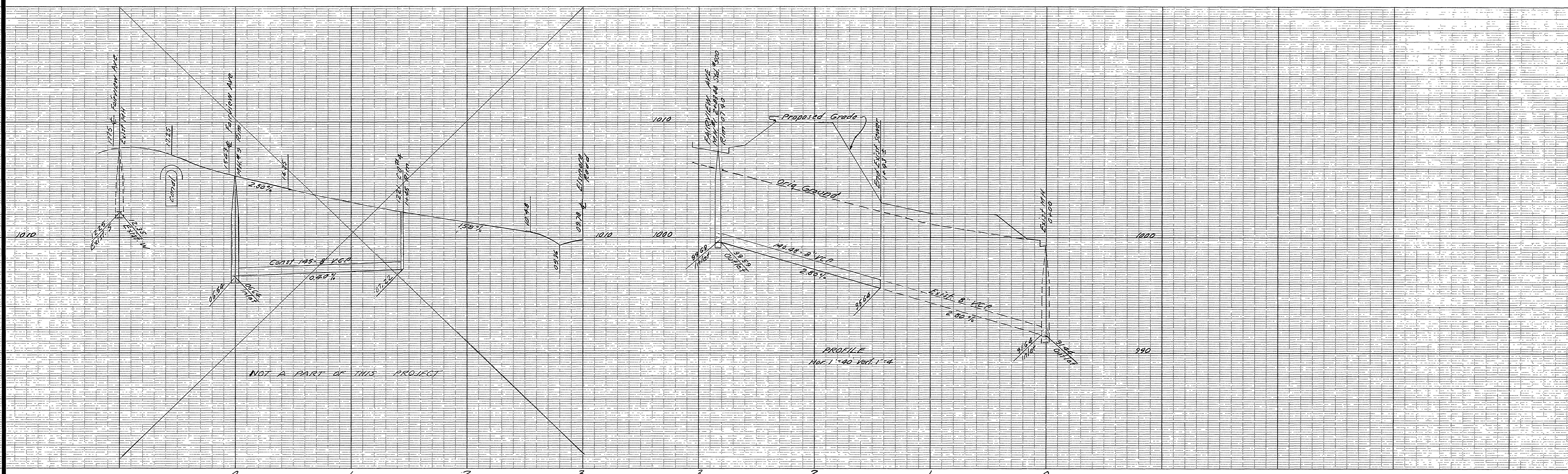
DESIGNED BY
 D.P. WINBY

CHECKED BY
 ENE

RECOMMENDED BY
Michael
 ASSISTANT CITY ENGINEER

NO. S-397
 DATE 3-25-63 SHEET 6 OF 7

FB 710



BENCH MARK
 TBM "A" 1" IP at NE Cor of Lot 4 of Church Subdivision
 M B 6-55, Records of Riverside County, California
 Elev 1015.54

TBM "B" Spike in power pole No 7312-J at Sky end of King
 Street on Wly Side
 Elev 1041.46

REVISIONS		
MARK	DATE	DESCRIPTION

SOIL-CIVIL ENGINEER
 S.E. NO 862
 STATE OF CALIFORNIA
 APPROVED BY *J. Buckner* DATE 1-22-63

CITY OF RIVERSIDE, CALIFORNIA
 DEPARTMENT OF PUBLIC WORKS

SEWER PLAN & PROFILE
BRONSON WAY - EASEMENT

TRACT 2308
 HORIZ. SCALE 1"=40' VERT. SCALE 1"=4'

DESIGNED BY
 DRAWN BY
 CHECKED BY *W.D.B.*
 APPROVED BY *J.M. [Signature]*
 Director of Public Works

DATE 3-25-63

N 5-397
 S. 7 7

*As built. 9 12 63.G.S.