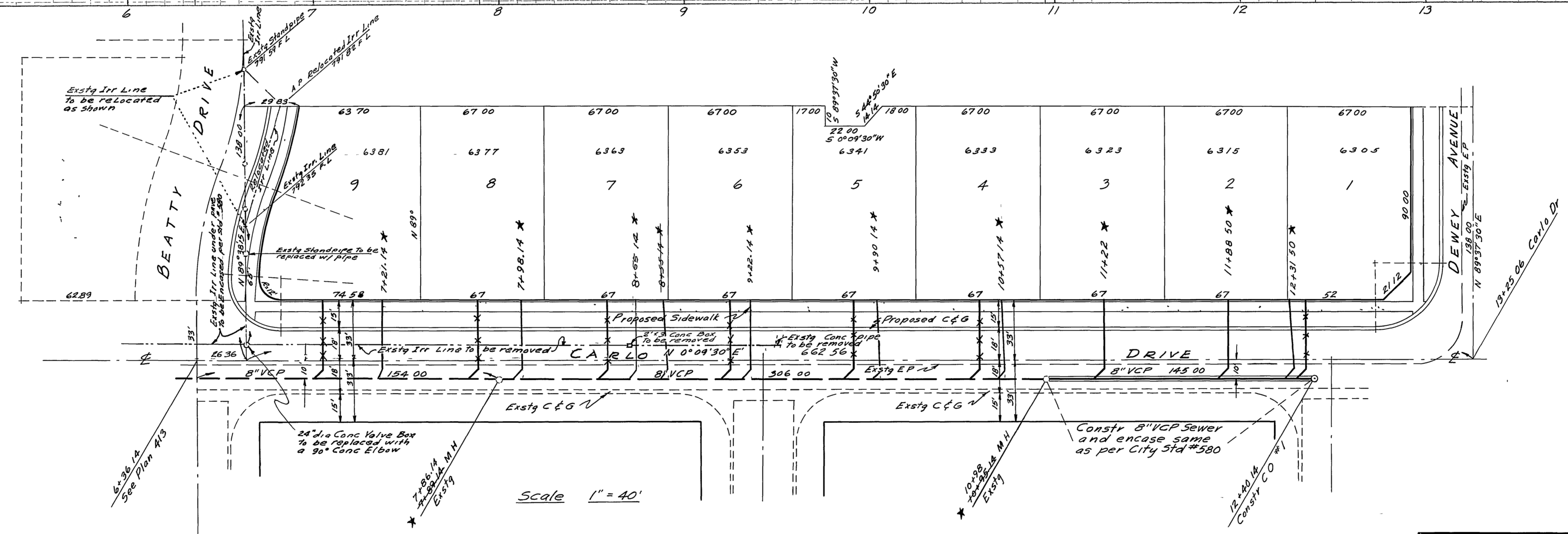
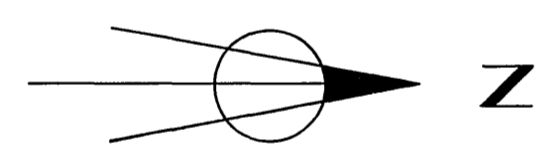


Bench Mark Spike in lead in NW cor of Storm drain MH at SE cor of Streeter & Dewey Elev 787.38



- GENERAL NOTES**
- (1) It shall be the responsibility of the Contractor to clear the right of way in accordance with the provisions of the law as it affects each utility, including irrigation lines and appurtenances, and at no cost to the City.
 - (2) All construction to be done according to Plans and Specifications No 461 of the City of Riverside.
 - (3) All house connections to be located in field.

* AS BUILT 7-14-66 gmd

HUGH M GALLAHER
 CIVIL ENGINEER
 RIVERSIDE, CALIFORNIA
 APPROVED BY *Hugh M Gallaher* DATE 1-11-63
 R.C.E. 7304

6/19/64	Change Tract No from 3054 to 3055	
SEWER PLAN & PROFILE CARLO DRIVE TRACT 3054		
APPROVED BY <i>Hugh M Gallaher</i>	S-399	5-10-63