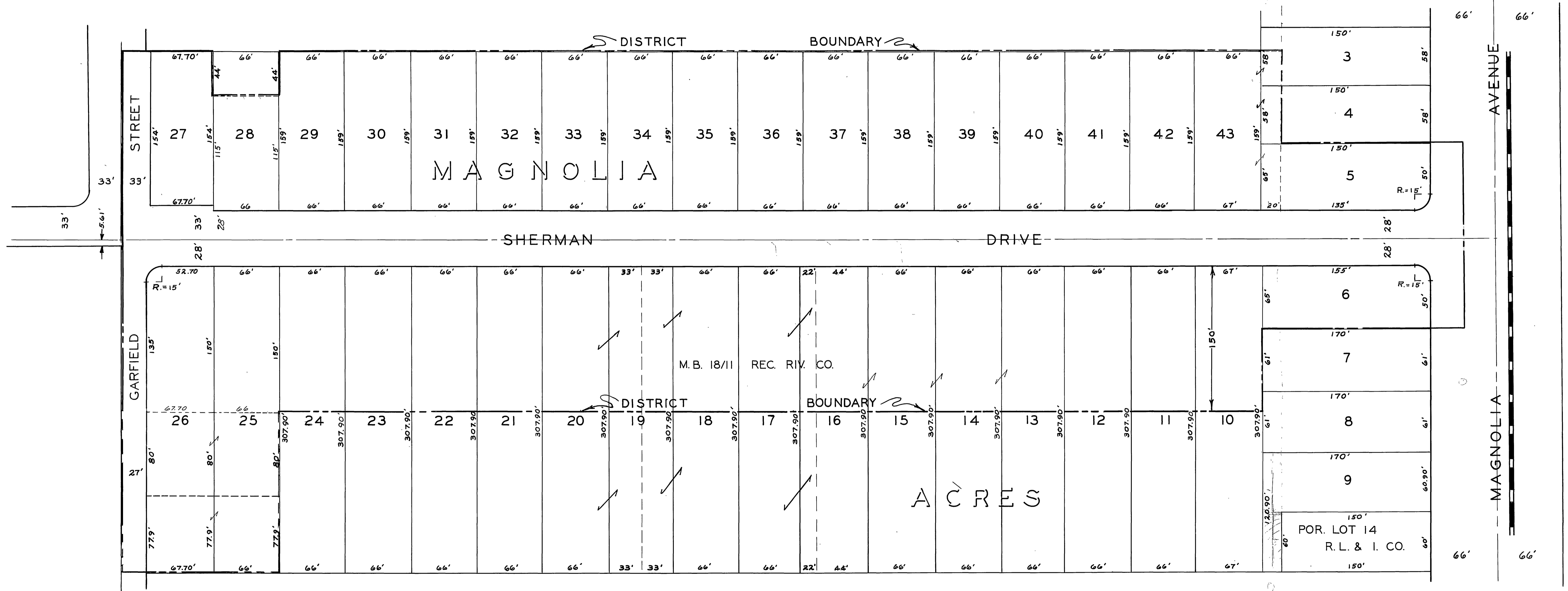


SCALE 1" = 50'

DISTRICT BOUNDARY SHOWN THUS



MAP SHOWING THE LANDS INCLUDED WITHIN THE ASSESSMENT DISTRICT TO BE BENEFITED BY THE CONSTRUCTION OF A SANITARY SEWER

REVISIONS			CITY OF RIVERSIDE CALIFORNIA DEPARTMENT OF PUBLIC WORKS
MARK	DATE	DESCRIPTION	
	10/4/56	CHANGE DISTRICT BOUNDARY TO INCLUDE SWLY 157.9' OF LOTS 25+26	SHERMAN DRIVE SANITARY SEWER AND IMPROVEMENT DISTRICT MAGNOLIA AVE. TO GARFIELD ST.
DESIGNED BY	DRAWN BY	CHECKED BY	
	B.S.	<i>[Signature]</i>	APPROVED BY
RECOMMENDED BY	<i>[Signature]</i>	ASSISTANT CITY ENGINEER	DIRECTOR OF PUBLIC WORKS
		DATE	JUNE 26, 1956

S39A  
SHEET 1 OF 1