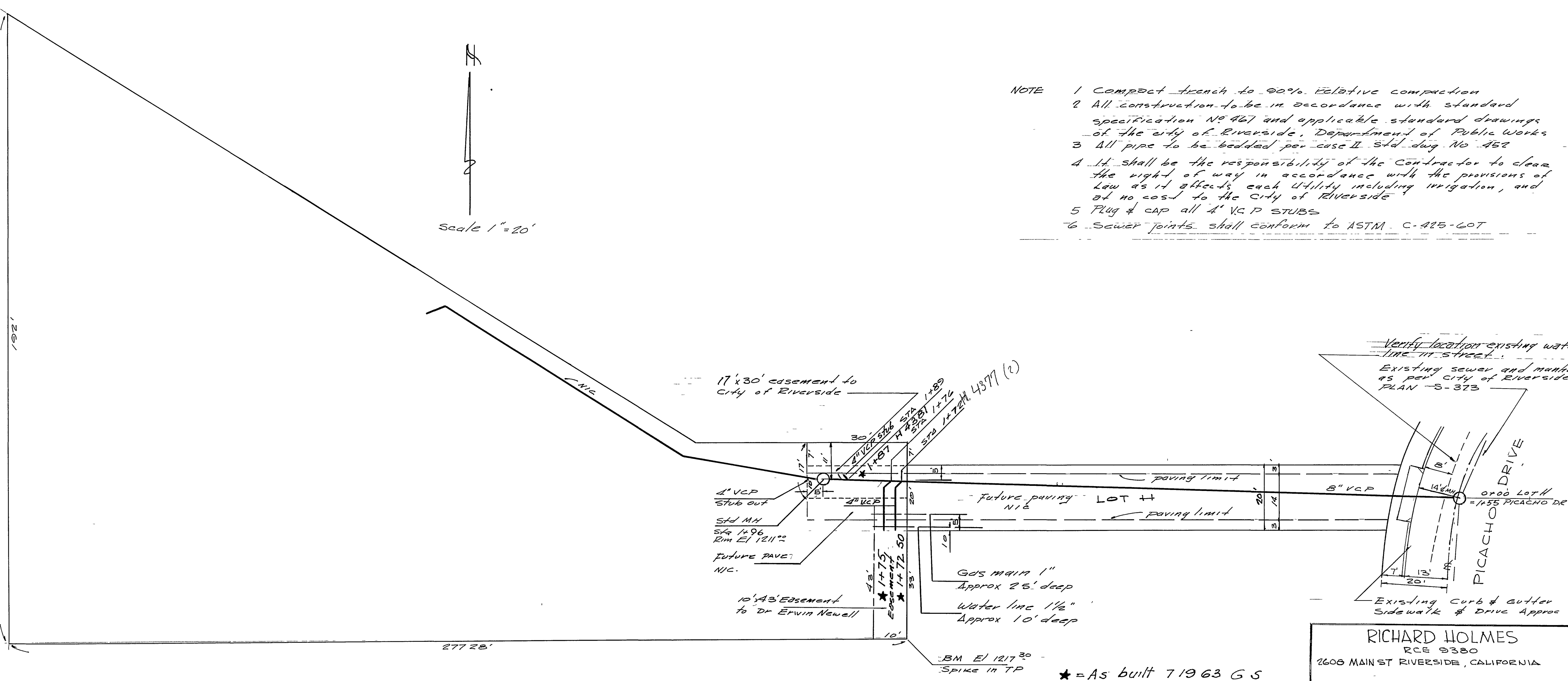
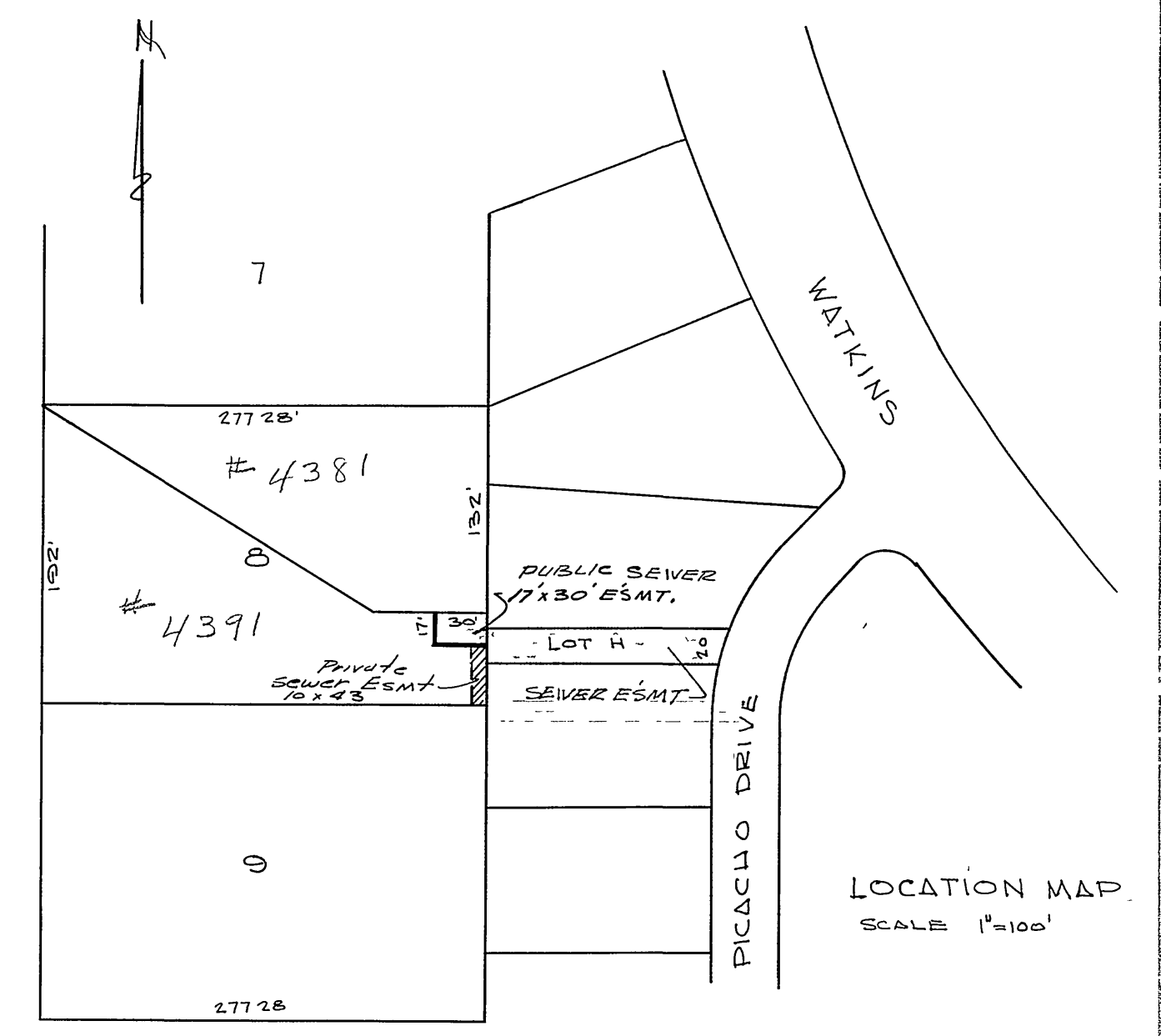


SCALE
HORIZ. 1" = 20'
VERT. 1" = 5'



- NOTE
- 1 Compact trench to 90% relative compaction
 - 2 All construction to be in accordance with standard specification No 467 and applicable standard drawings of the city of Riverside, Department of Public Works
 - 3 All pipe to be bedded per case II Sid. dug No 462
 - 4 It shall be the responsibility of the Contractor to clear the right of way in accordance with the provisions of Law as it affects each utility including irrigation, and at no cost to the City of Riverside
 - 5 Plug & cap all 4" VCP stubs
 - 6 Sewer joints shall conform to ASTM C-475-60T



| REVISIONS | | CITY OF RIVERSIDE, CALIFORNIA DEPARTMENT OF PUBLIC WORKS | |
|-----------|------|---|--|
| MARK | DATE | DESCRIPTION | |
| | | | |
| | | | |

| | | | |
|---------------------|--|-------------------------------------|--|
| DESIGNED BY R.H. | | SUBMITTED BY William D. Handover | |
| DRAWN BY M.J.M. | | TRAFFIC DIV. | |
| CHECKED BY R.H. | | RECOMMENDED BY R.H. | |

| | |
|---|----------------------|
| APPROVED BY <i>[Signature]</i> RCE 9380 | PROJECT NO. S-400 |
| DATE 4-9-1963 | SHEET 1 of 1 |

RICHARD HOLMES
RCE 9380
2608 MAIN ST RIVERSIDE, CALIFORNIA

* = AS BUILT 7/19/63 G.S.

| | |
|-------------|-------------|
| DATE | 1963 |
| BY | R.H. |
| CHECKED BY | R.H. |
| APPROVED BY | [Signature] |

| | |
|-------------|-------------|
| PL. 311 | 1963 |
| DATE | 1963 |
| BY | R.H. |
| CHECKED BY | R.H. |
| APPROVED BY | [Signature] |