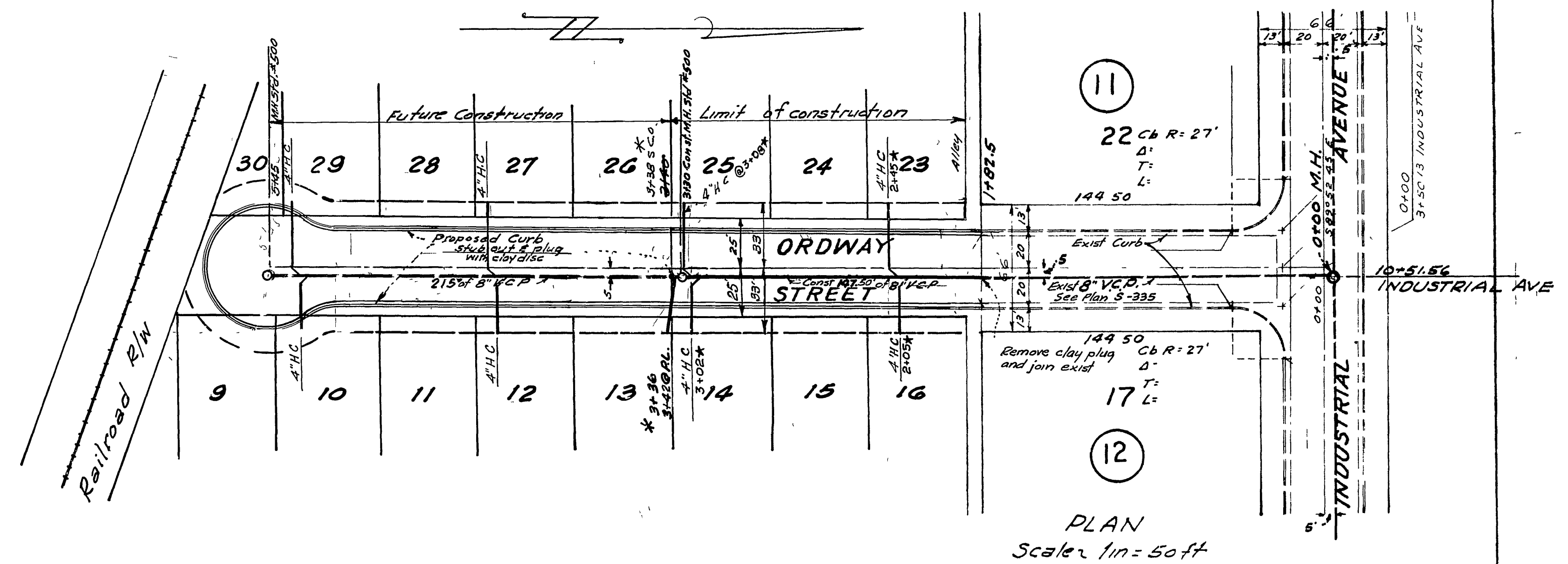


PROFILE  
1" = 5' Vert  
Scale 1" = 50' Hor

PROFILE  
1" = 5' Vert  
Scale 1" = 50' Hor

NOTE: Contractor shall uncover end of existing sewer and engineer shall verify elevation before grade sheets are issued

- General Notes**
- M.H. covers to be set flush with pavement after pavement has been installed
  - 4" House connections to be located in the field
  - All construction to be in accordance with standard specifications N8461, City of Riverside.
  - Where sewer trench passes under curb, trench shall be backfilled and tamped to 90% of relative compaction
  - The contractor is required to take due precautionary measures to protect the utilities or structures shown and any other utilities or structures at the site. It shall be the contractor's responsibility to locate all utilities and structures and notify the owners of same before starting work
  - Bench Mark is R.R. spike in P. Pole # 15107-J at NE corner of FREMONT ST. and INDUSTRIAL AVE Elevation 777.10
  - Pipe shall be bedded Case II Std. Dwg # 452
  - Joints in vitrified clay pipe sewers shall conform to ASTM Std. C-425-60T, or the latest revision thereof.



PLAN  
Scale 1" = 50'

REVISIONS			CITY OF RIVERSIDE CALIFORNIA DEPARTMENT OF PUBLIC WORKS
MARK	DATE	DESCRIPTION	
*	4-10-62	AS BUILT	<b>SEWER PLANS AND PROFILES ORDWAY ST. FROM INDUSTRIAL AVE TO ROHR SPUR</b>

\* AS BUILT 8/2/72 KARL  
**McKee & Crawley**  
SURVEYORS AND ENGINEERS  
Riverside California  
Approved George O. Crawley RE 92455 Date 3-5-63

DESIGNED BY  
DRAWN BY  
RECOMMENDED BY  
CHECKED BY Ron  
APPROVED BY  
DIRECTOR OF PUBLIC WORKS  
DATE 3-7-63  
S-402  
SHEET 1 OF 1