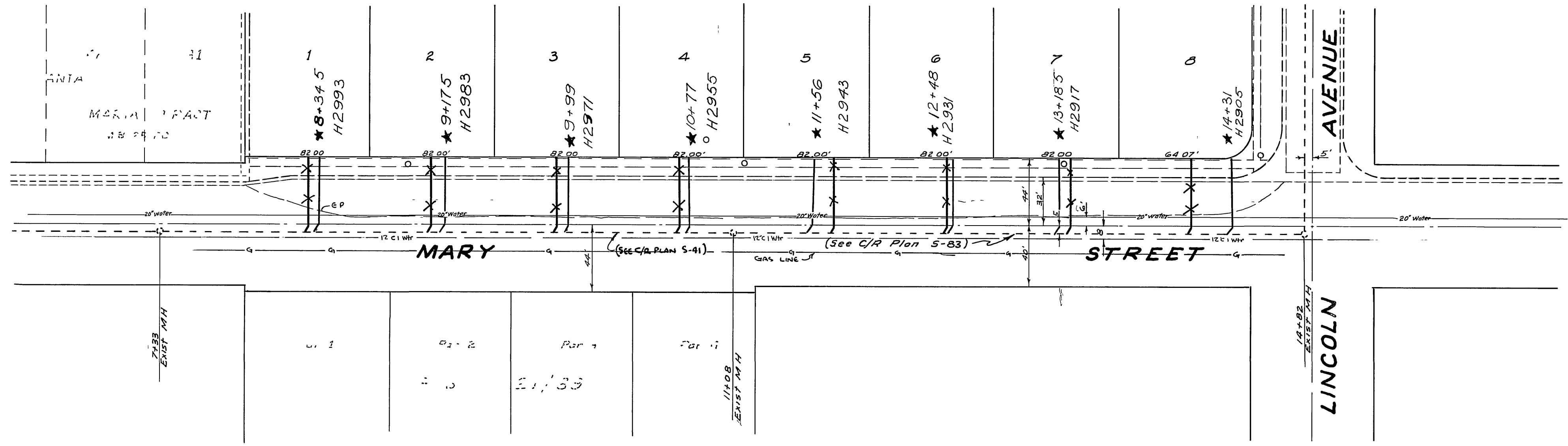


SCALE HORIZ. 1"=50'
 VERT. 1"=5'

B.M. PK. Nail in Ely Co. Mary St.
 660' S. of Marguerita
 Opposite Hse. #3005.
 ELEV. 916.53



GENERAL NOTES

- 1 Construction shall be in accordance with the City of Riverside Department of Public Works Standard Specifications No 461 and Standard Drawings.
- 2 Location of Wyes and Lateral to be Determined in the Field.
- 3 All Laterals to be Constructed in Accordance with Standard Drawing No 562.
- 4 Pipe shall be Bedded Case II Std Dwg No 452.

NOTE TO CONTRACTOR

The existence and location of any underground utility pipes or structures shown on these plans are obtained by a search of available records. To the best of our knowledge there are no existing utilities except as shown on these plans. The Contractor is required to take due precautionary measures to protect the utility lines shown on any other lines not of record or not shown on these plans.

QUANTITY ESTIMATE		
5" Vitrified Clay Pipe	1,220	LF
4" Vitrified Clay Pipe	1,448	LF
Standard No 500 Manhole	4	Eo
4" Wyes	40	Eo
Pavement Replacement	247	Sq Ft

*=As built 12 2 63 G S

ALBERT A. WEBB ASSOCIATES
 CIVIL ENGINEERS - RIVERSIDE, CALIFORNIA
 APPROVED *Albert A. Webb* DATE 2/6/63
 RE 3076

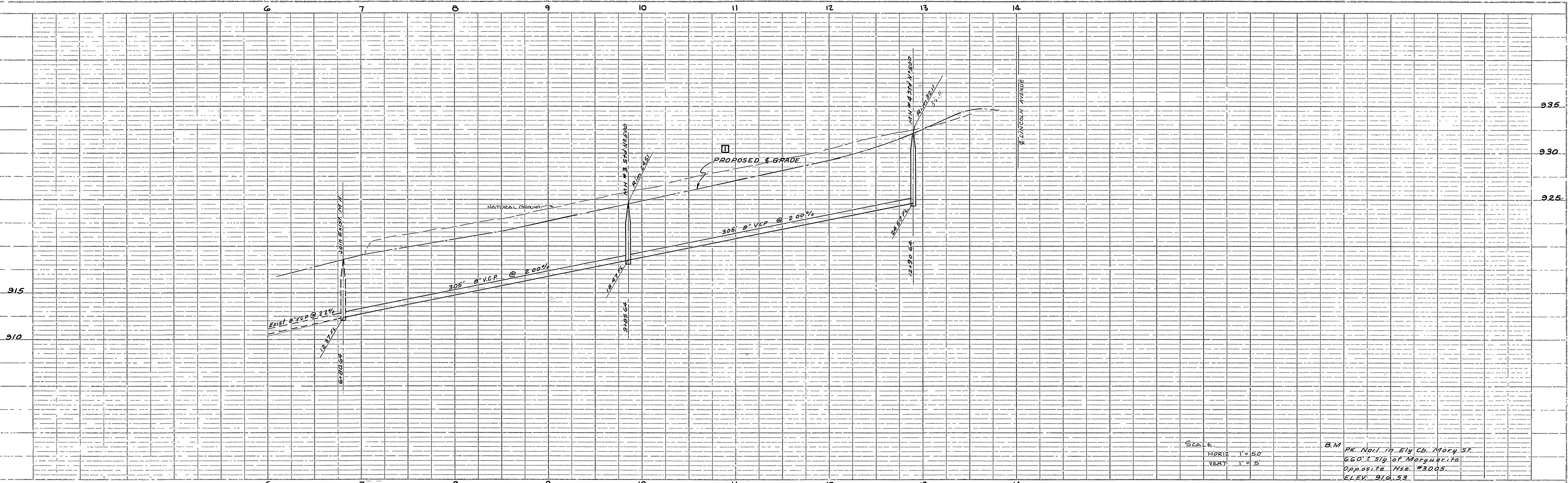
REVISION		DESCRIPTION
MARK	DATE	

CITY OF RIVERSIDE, CALIFORNIA
 DEPARTMENT OF PUBLIC WORKS

SEWER PLAN & PROFILE
 OF
MARY STREET
 IN
 TRACT NO. 2578

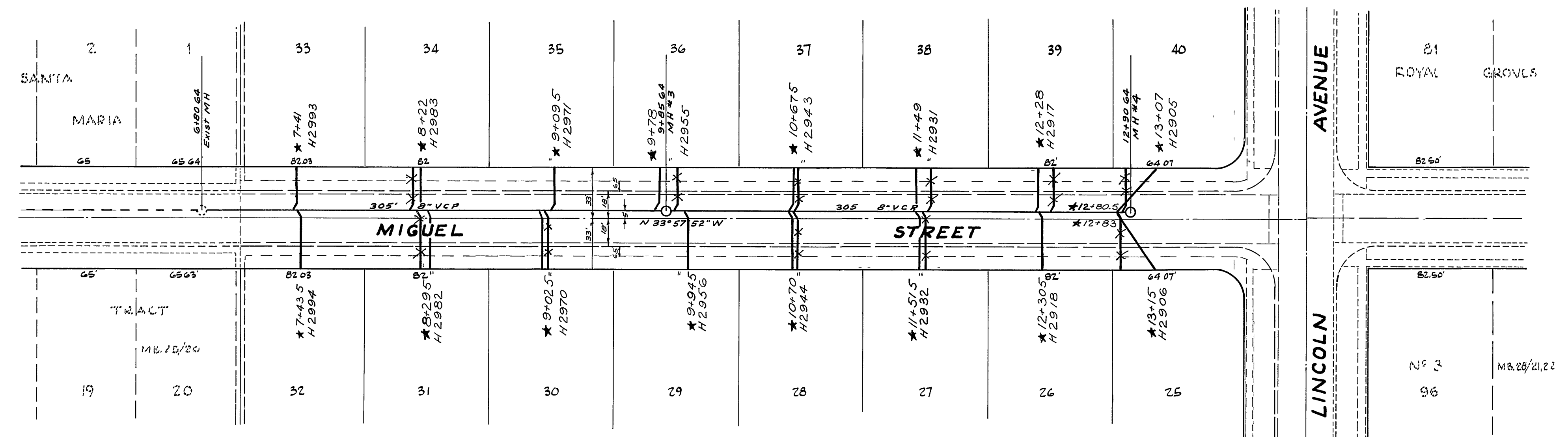
DATE	JANUARY 1963	SCALE	1"=50'	APPROVED BY	<i>W.O. Webb</i>
DRAWN	rel	W.O.	62-336	DIRECTOR OF PUBLIC WORKS	NO. S-403
CHECKED	Ron	F.B.	455/30	DATE	4-1-63

SHEET 1 OF 3



SCALE
 HORIZ. 1" = 50'
 VERT. 1" = 5'

B.M. PK. Nail in Ely. Co. Mary St.
 660' ± Sly. of Marguerita
 Opposite Hse. #3005.
 ELEV. 910.53



ALBERT A. WEBB ASSOCIATES
 CIVIL ENGINEERS - RIVERSIDE, CALIFORNIA
 APPROVED *[Signature]* DATE 7/6/63
 R.E. 9876

CITY OF RIVERSIDE, CALIFORNIA
 DEPARTMENT OF PUBLIC WORKS

REVISION		
MARK	DATE	DESCRIPTION
II	8-13-63	REVISE PROP. G. GRADE & DIM. ELEV. FROM WORK 047

SEWER PLAN & PROFILE
 OF
MIGUEL STREET
 TRACT NO. 2578

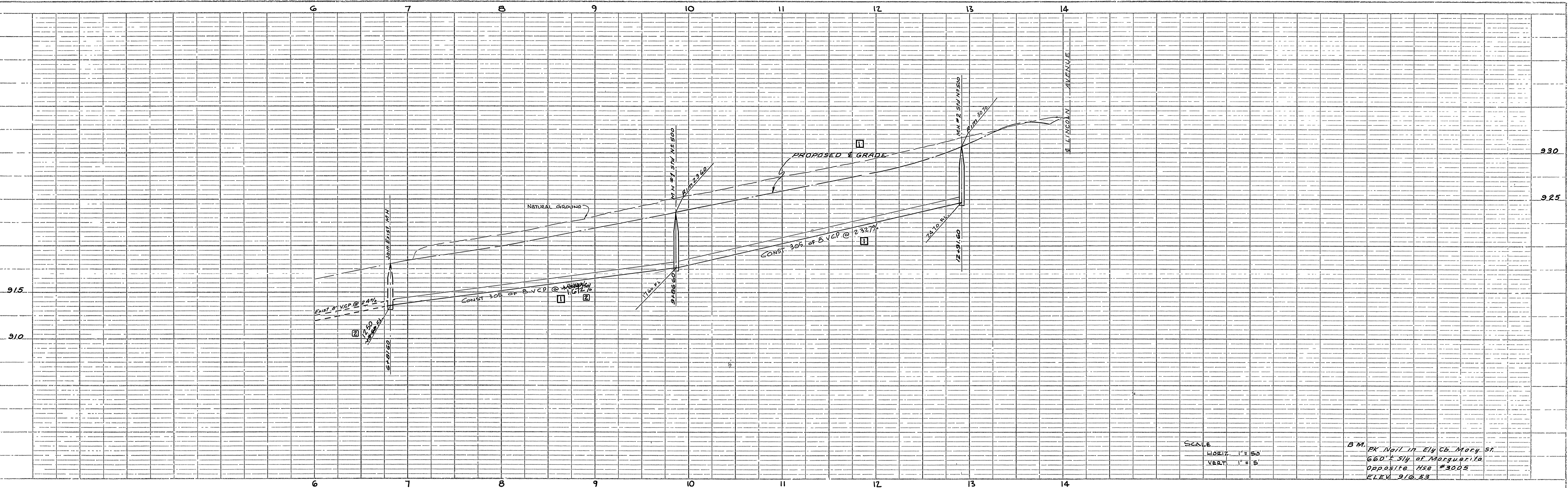
DATE JANUARY 1963	SCALE 1" = 50'	APPROVED BY <i>[Signature]</i>
DRAWN <i>[Signature]</i>	W.O. 62-336	DIRECTOR OF PUBLIC WORKS
CHECKED <i>[Signature]</i>	F.B. 455/30	DATE 4-1-63

NO. S-403
 SHEET 2 OF 3

* = As built 12 3 1963 G.S.

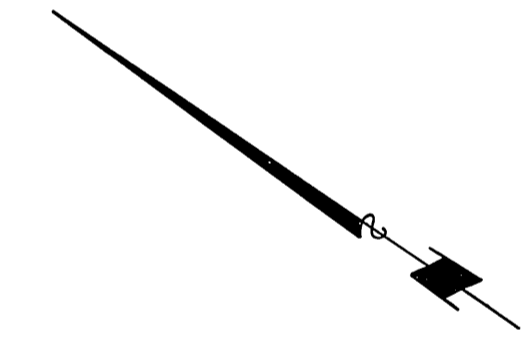
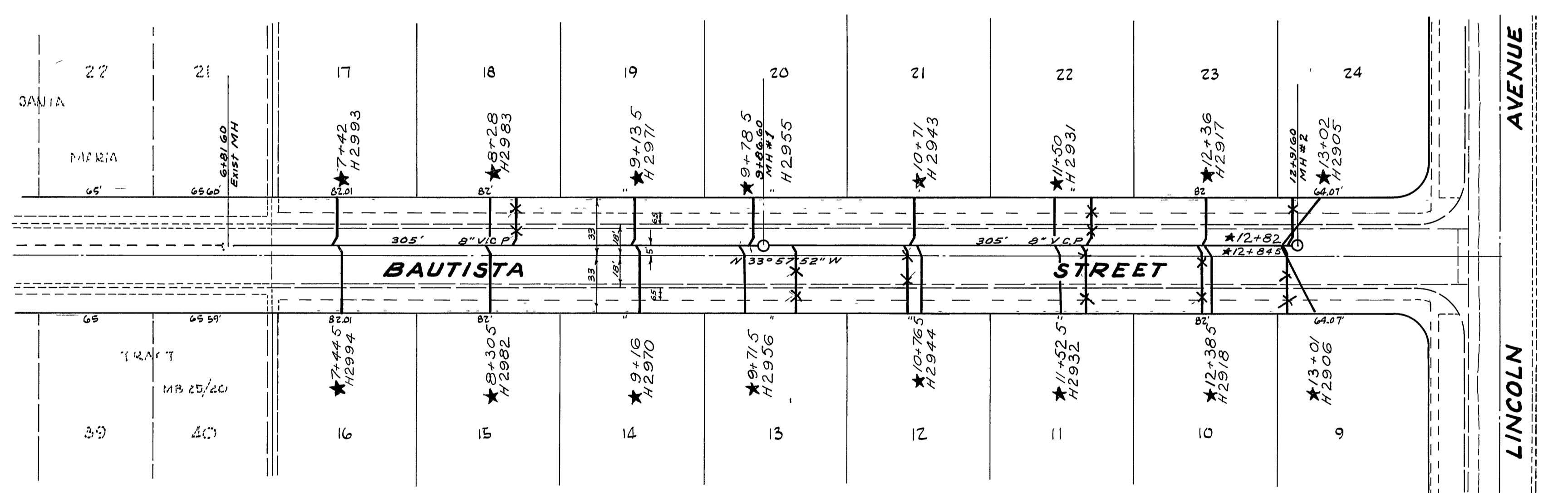
PROFILE
 SURVEYED
 BY J. J. HILL
 ALBERT A. WEBB ASSOCIATES
 CIVIL ENGINEERS
 RIVERSIDE, CALIFORNIA

PLAN
 SURVEYED
 BY J. J. HILL
 ALBERT A. WEBB ASSOCIATES
 CIVIL ENGINEERS
 RIVERSIDE, CALIFORNIA



SCALE
 HORIZ. 1" = 50'
 VERT. 1" = 5'

B.M. PK Nail in Ely Ch. Mary St.
 660' x 514' of Margarita
 Opposite H50 #3005
 ELEV. 910.33



ALBERT A. WEBB ASSOCIATES
 CIVIL ENGINEERS - RIVERSIDE, CALIFORNIA
 APPROVED *Albert Webb* DATE 7/6/63
 R.C. 9816

CITY OF RIVERSIDE, CALIFORNIA
 DEPARTMENT OF PUBLIC WORKS

REVISION		
MARK	DATE	DESCRIPTION
1	8-18-63	REVISED FL GRADES AND PROP PWT GRADES FOR W.D.S. 097
2	11-5-63	REVISED FL GRADE FOR W.D.S. 097

SEWER PLAN & PROFILE
 OF
BAUTISTA STREET
 IN
 TRACT NO. 2578

DATE JANUARY 1963
 DRAWN *dlr*
 CHECKED *RON*

SCALE 1" = 50'
 W.O. 62-336
 F.B. 455/30
 APPROVED BY *W.O.*
 DIRECTOR OF PUBLIC WORKS
 DATE 4-1-63
 SHEET 3 OF 3

*As built 12 4 1963 G S

PROFILE
 DRAWN BY
 CHECKED BY
 DATE

PLAN
 DRAWN BY
 CHECKED BY
 DATE