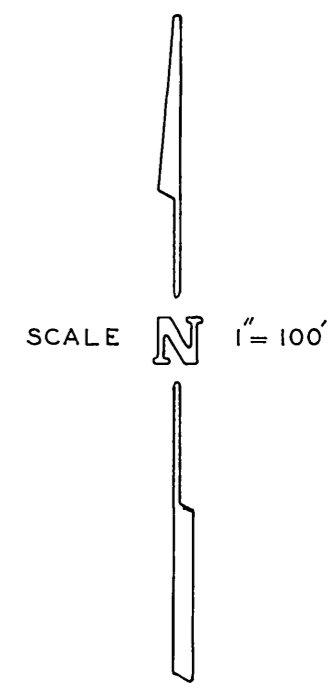
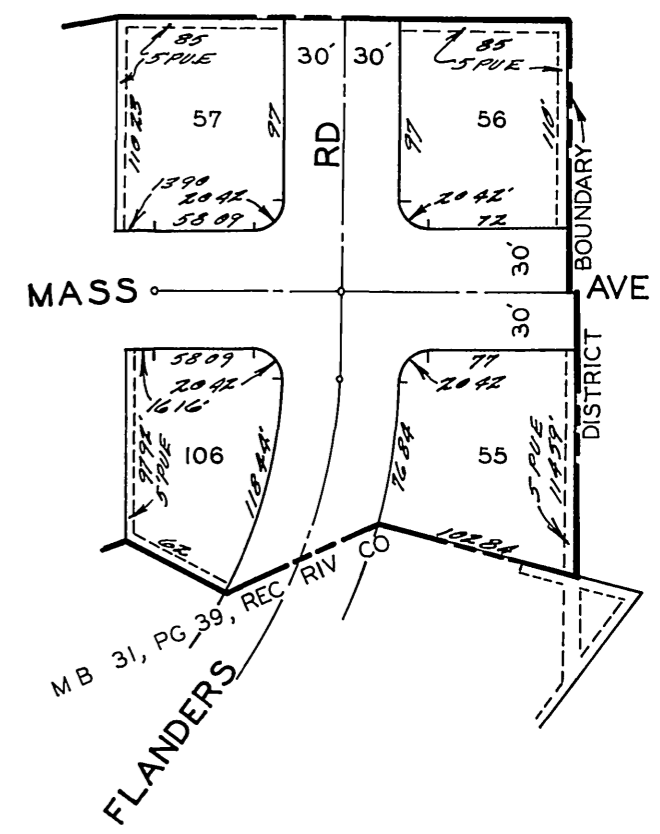
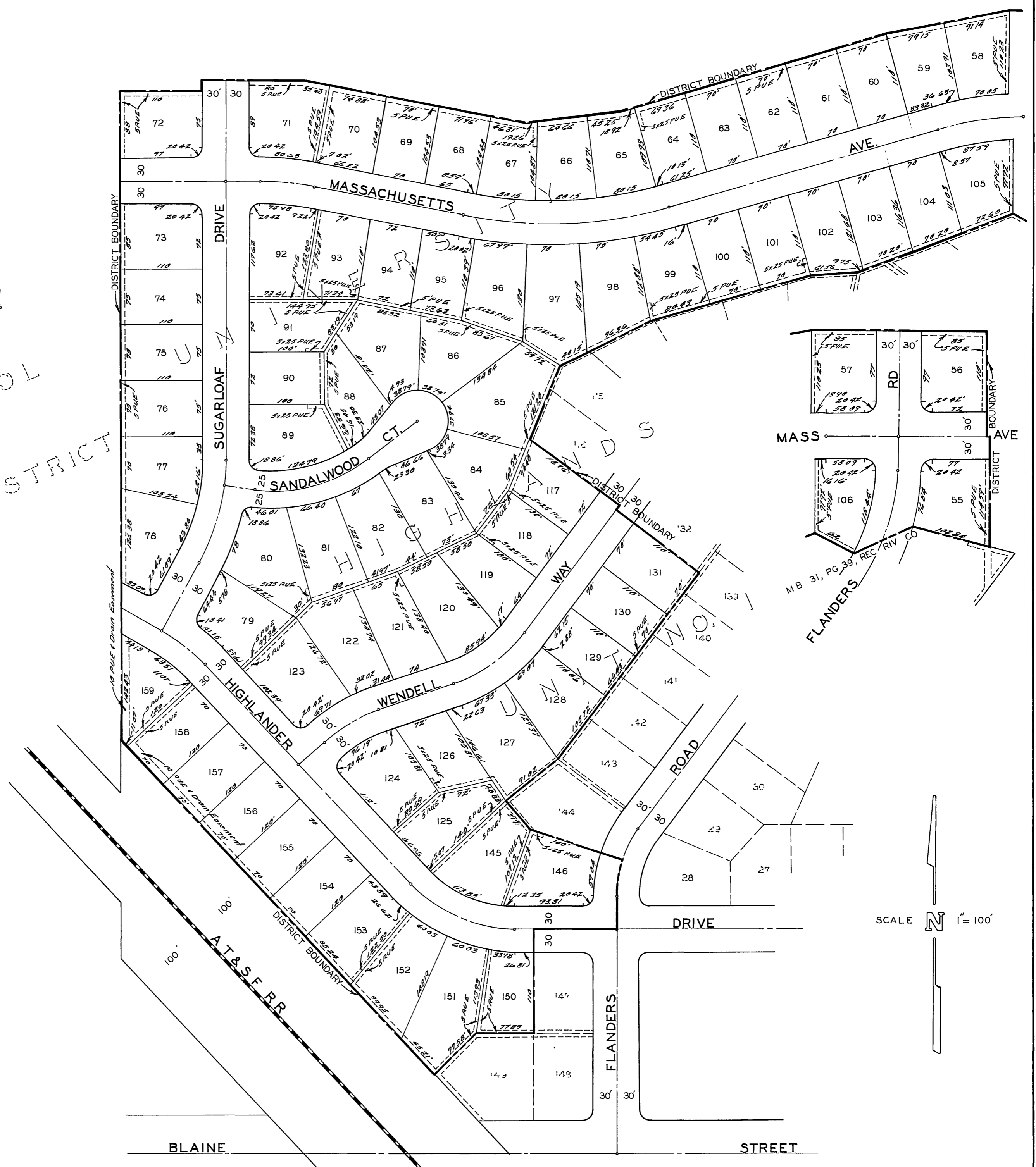


RIV. CITY  
SCHOOL  
DISTRICT



MAP SHOWING THE LANDS INCLUDED WITHIN THE ASSESSMENT DISTRICT TO BE BENEFITED BY THE CONSTRUCTION OF SANITARY SEWER

REVISIONS			CITY OF RIVERSIDE, CALIFORNIA DEPARTMENT OF PUBLIC WORKS	
MARK	DATE	DESCRIPTION		
			UNIVERSITY HIGHLANDS SANITARY SEWER DISTRICT	
DESIGNED BY	SUBMITTED BY	APPROVED BY	PROJ NO 6039	
DRAWN BY <i>cm</i>	<i>William B. Warden</i> PUB. DEPT	<i>J. Martine</i> DIRECTOR OF PUBLIC WORKS	<b>S-404-AB</b>	
CHECKED BY <i>AW</i>	REVISIONS BY <i>AW</i>	DATE	9-10-63	
			SHEET 1 OF 1	