

NOTES

SEE SHEET 2

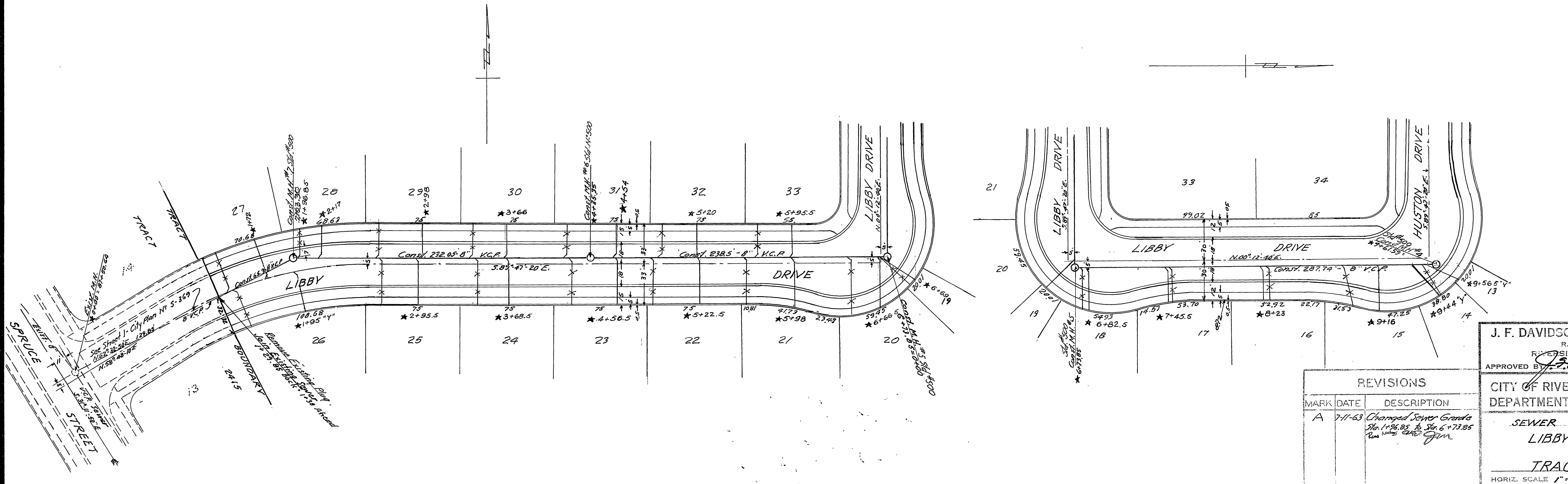
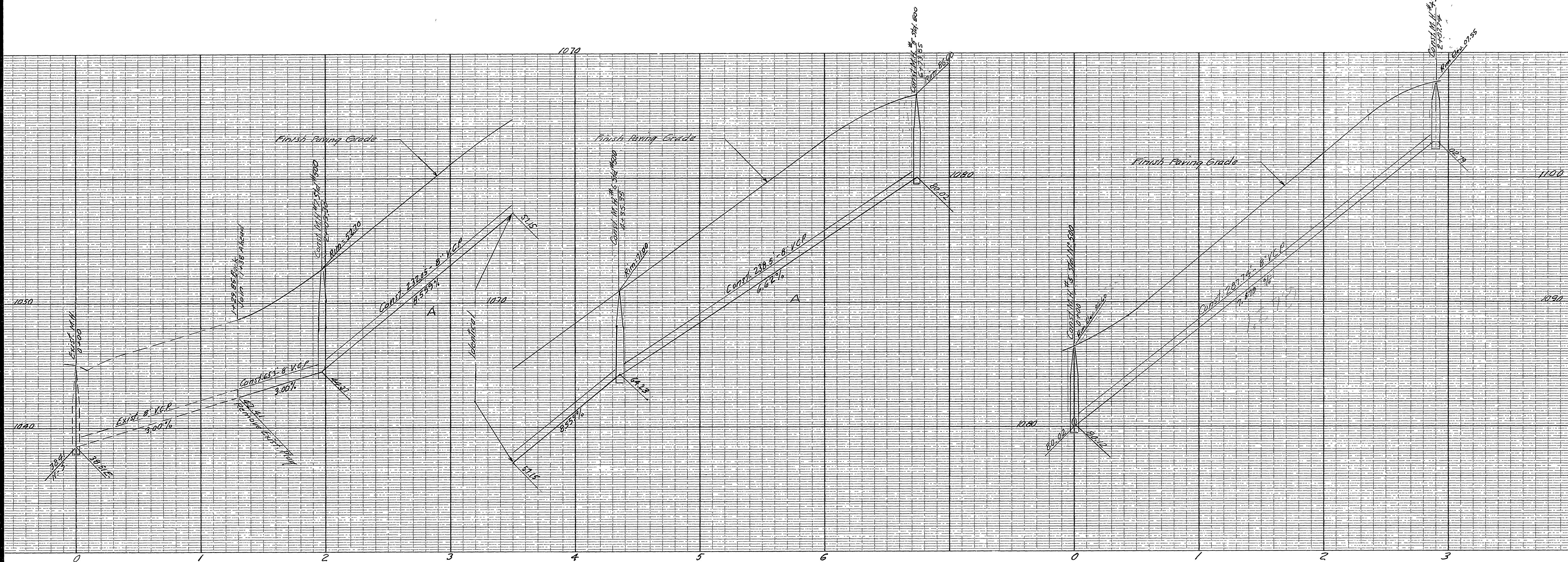
All construction shall be in accordance with Standards and Specifications No. 461 of the City of Riverside Department of Public Works. Pipe shall be bedded per Case II, Standard Drawing No. 432.

It shall be the responsibility of the Contractor to clear the right of way in accordance with the provisions of law as it affects each lot, including irrigation lines and appurtenances, and at no extra cost to the City of Riverside.

Joints in vitrified clay pipe sewers shall conform to ASTM Standard C-425-60 T, or the latest revision thereof. All wyes and laterals to be located in the field.

* = As built. 8.15.63. G.S.

City & M. Top. Ft. S.E. on Canyon Crest & Linden St. F.B. 810-11. Elev. 1042.08 T.B.M. Spk. in Tel. Pole No. 4341674 on N. Side Service St. W. side R.R. Tracks F.B. 800-49 Elev. 1018.81		J. F. DAVIDSON-CIVIL ENGINEER R.E. NO. 862 RIVERSIDE, CALIFORNIA APPROVED BY <i>J. Davidson</i> DATE 3/18/63	
REVISIONS			
MARK	DATE	DESCRIPTION	
B	7-23-63	Remove 80' of 8" V.C.P. Const. M.I. # 15 Change location of 2 laterals. wds g. jvm	
DESIGNED BY DRAWN BY		CHECKED BY <i>Ron</i> wds g.	APPROVED BY <i>J. Davidson</i> Director of Public Works
RECOMMENDED BY <i>A. Mitchell</i> ASSISTANT CIVIL ENGINEER		DATE 5-20-63	NO. S-414 SHEET 1 OF 2



REVISIONS		
MARK	DATE	DESCRIPTION
A	7-11-63	Changed Sewer Grade from 148.85 to 147.85 from 147.85 to 147.85

J. F. DAVIDSON-CIVIL ENGINEER
 R.E. NO. 862
 RIVERSIDE, CALIFORNIA
 APPROVED BY *J. F. Davidson* DATE 9/18/63
CITY OF RIVERSIDE, CALIFORNIA
DEPARTMENT OF PUBLIC WORKS
SEWER PLAN & PROFILE
LIBBY DRIVE
TRACT 2587
 HORIZ. SCALE 1"=40' VERT. SCALE 1"=4'
 CHECKED BY *Ron W. S.*
 APPROVED BY *J. F. Davidson*
 Director of Public Works
 DATE 5-20-63 SHEET 2 OF 2

City B.M. Top of H. S.E. Cor. Canyon Crest & Linden St. I.B. 814-11. Elev. 1092.00
 F.B.M. Spk. in Tel. Pole No. 43467 H on N. side Spruce St. W. side R.R. Tract I.B. 800-93 Elev. 1018.81

* = As built. 8.15.63. G.S.