

INDEXED 5 R

J. F. DAVIDSON - CIVIL ENGINEER
 R.E. NO. 862
 RIVERSIDE, CALIFORNIA
 APPROVED BY *J. Davidson* DATE *4-19-63*

CITY OF RIVERSIDE, CALIFORNIA
 DEPARTMENT OF PUBLIC WORKS

SEWER PLAN & PROFILE
ELDERWOOD COURT
TRACT 2605

HORIZ. SCALE 1" = 40' VERT. SCALE 1" = 4'

APPROVED BY *J. Davidson* DATE *4-19-63*

5-416

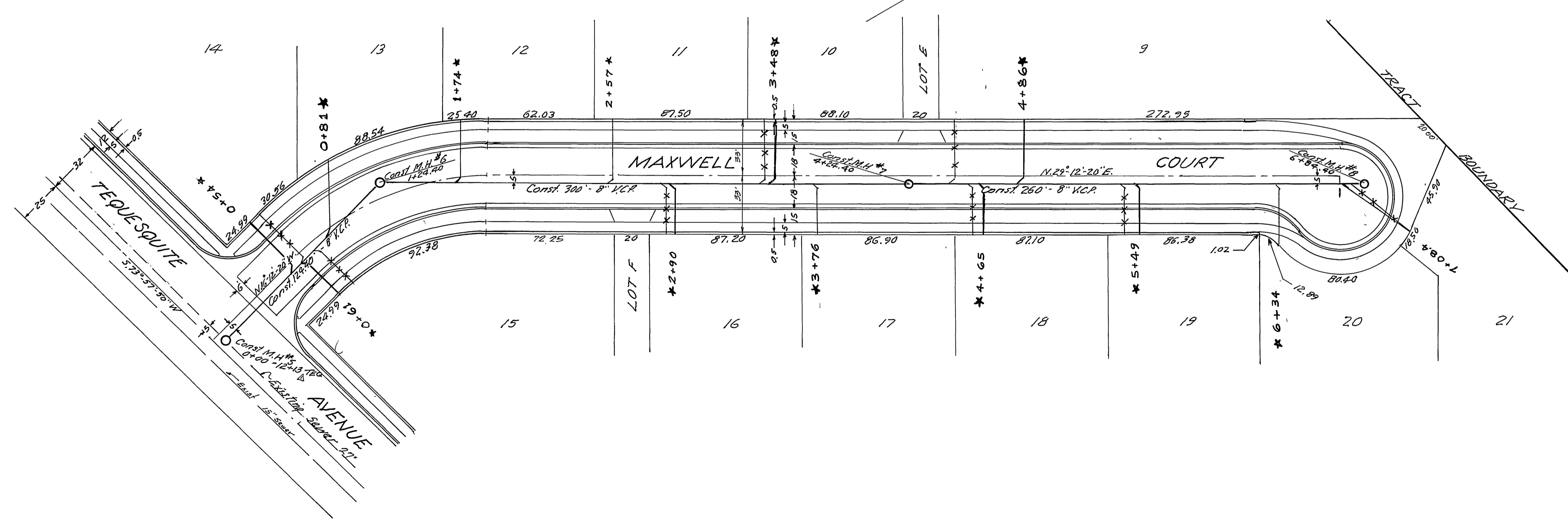
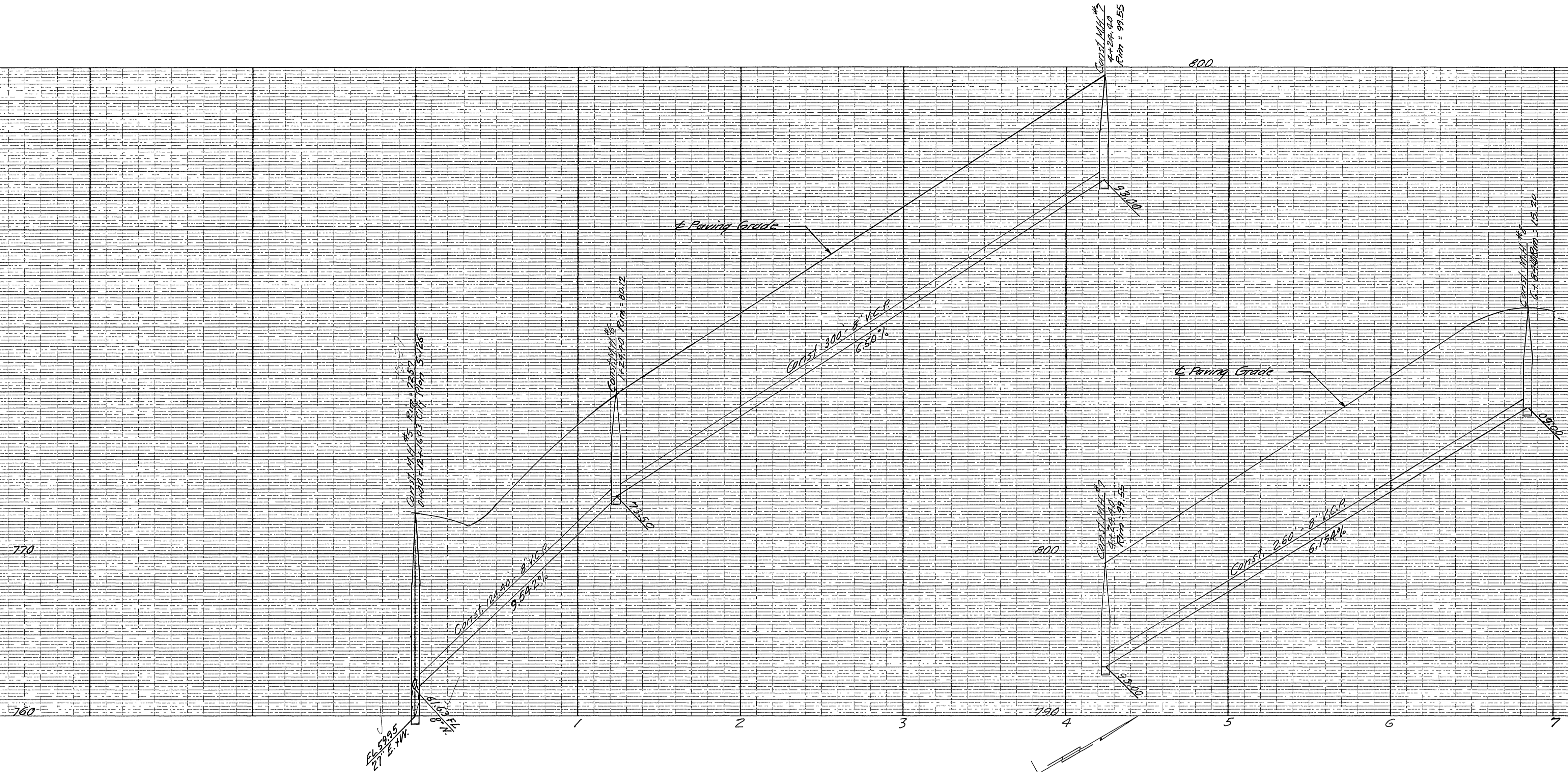
MARK	DATE	DESCRIPTION
*	4-73	AS BUILT E&B

CHECKED BY *Row*

J. Davidson 6-18-63

5. Joints in vitrified clay pipe sewers shall conform to ASTM Standard C-425-60T or latest revision thereto.

* As built 5/11/64 BE



BENCH MARK Top of 2"IP at intersection of Terquesquite Ave. and Palm Ave. Elev. = 183.31 F.B. 717-39		J. F. DAVIDSON-CIVIL ENGINEER R.E. NO. 862 RIVERSIDE, CALIFORNIA APPROVED BY: <i>[Signature]</i> DATE: 4-19-63	
REVISIONS			
MARK	DATE	DESCRIPTION	
Δ	4-73	AS BUILT E.A.B.	
DESIGNED BY		CHECKED BY: <i>Ron</i>	APPROVED BY: <i>[Signature]</i>
DRAWN BY			NO. 5-416
RECOMMENDED BY: <i>[Signature]</i>		DATE: 6-18-63	2 2

* As Built 4-21-64 BE