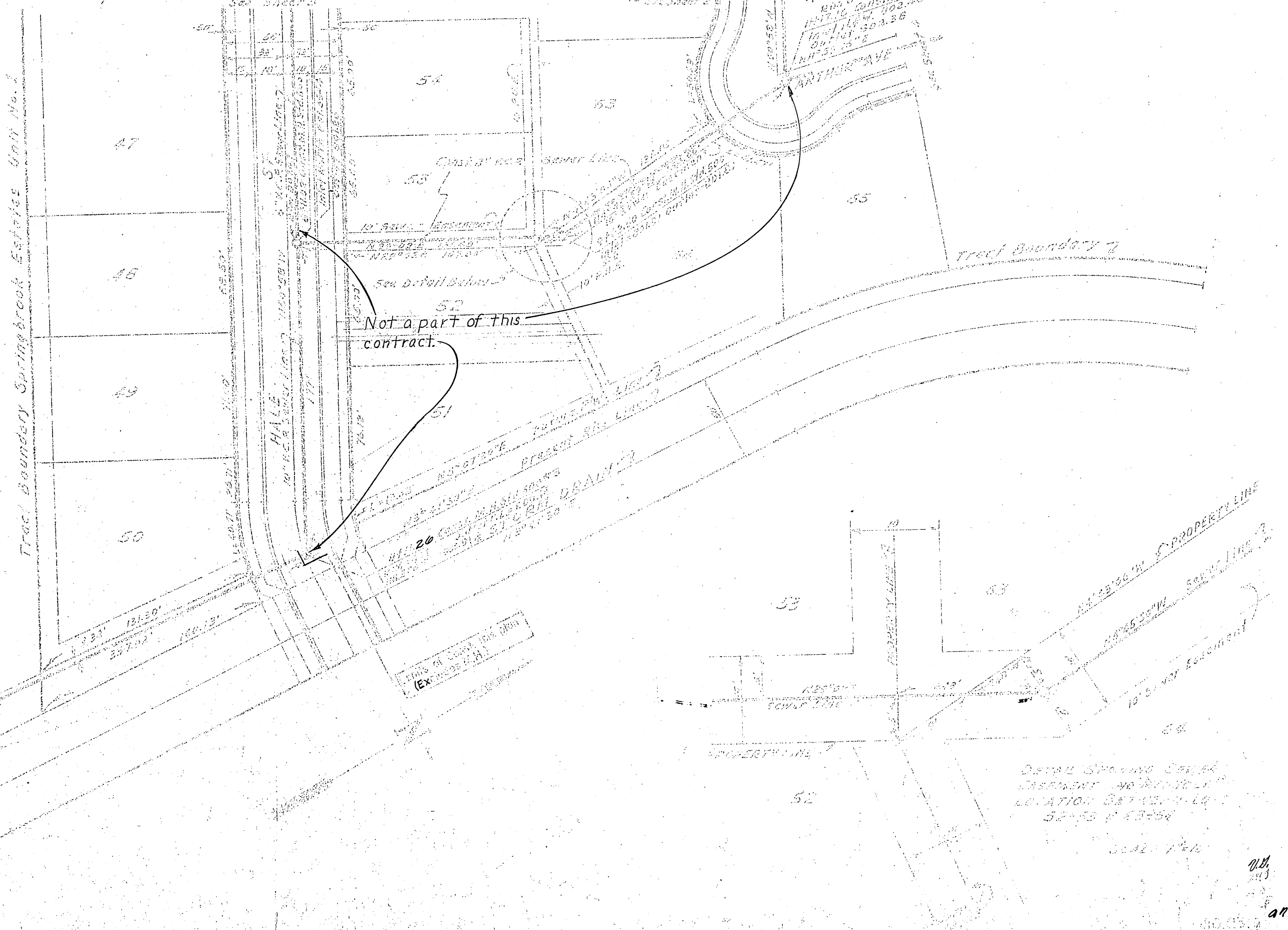
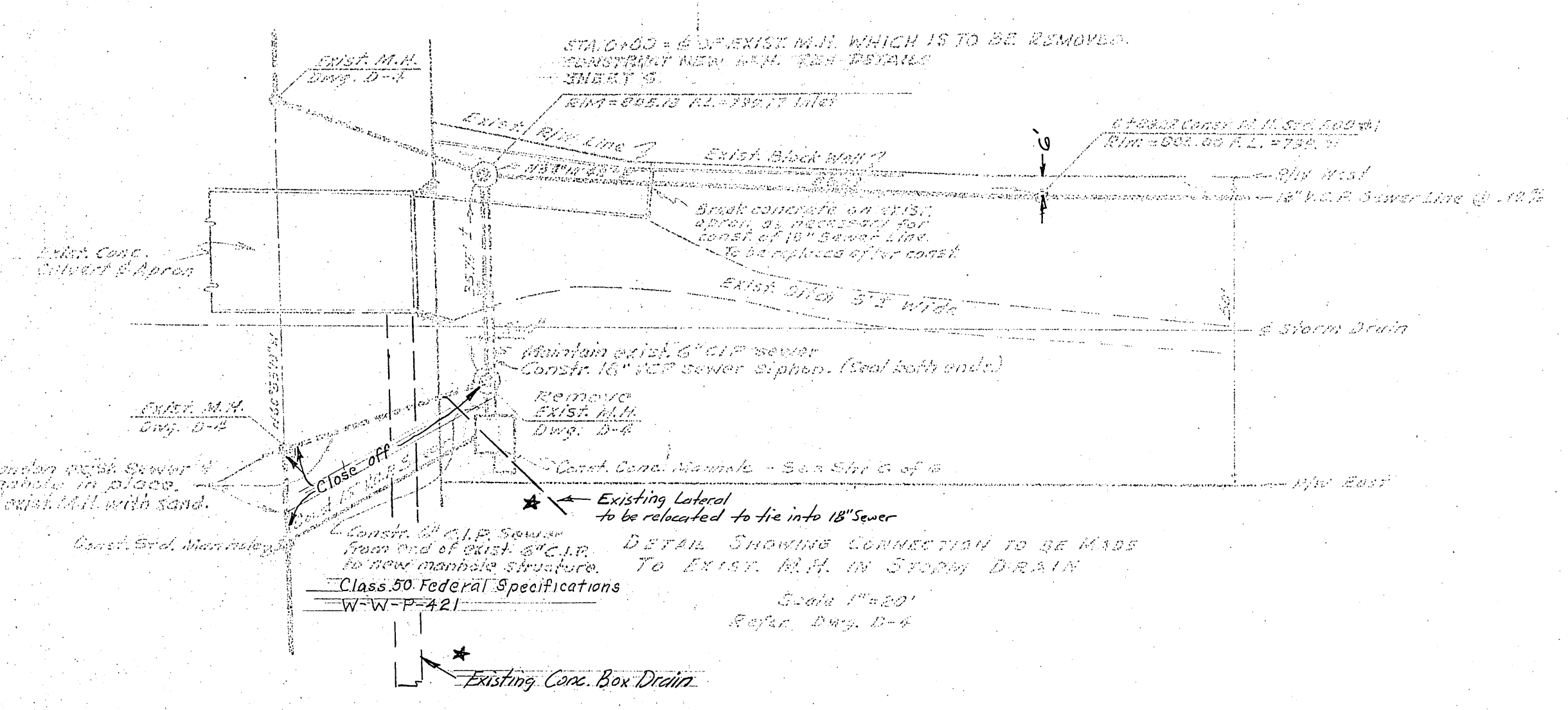


B.M. LEAD S TACK AT CORN. OF BLDG.
WEST CORNER OF BLDG. ST. AND STRONG ST.
ELEV. = 305.60



- ① 8-21-43. Revise alignment of sewer from 0+00 to 4+53.34 (see 1001) Approved: J.H. [Signature] Director of Public Works
- * 8-23-43. Add storm drain and lateral from N.R.T.

William S. Gardner

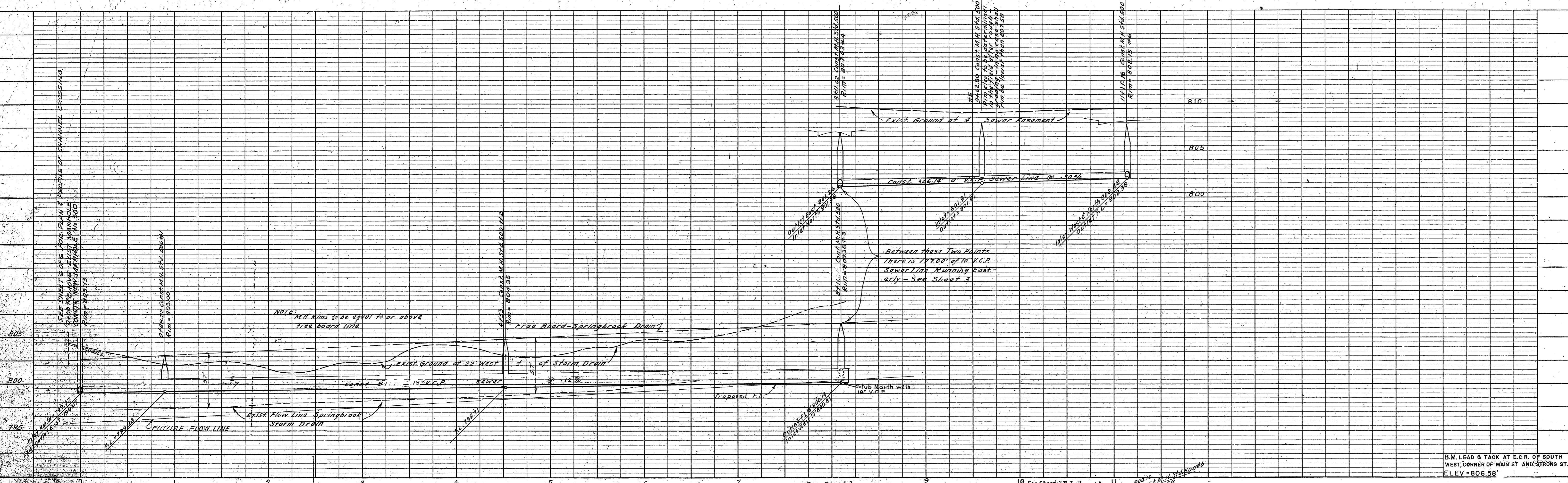
J.H. [Signature]

SPRINGBROOK TRUNK SEWER
18" V.C.P. SEWER LINE & SIPHON FROM STRONG STREET TO HALE STREET ALONG SPRINGBROOK CHANNEL.

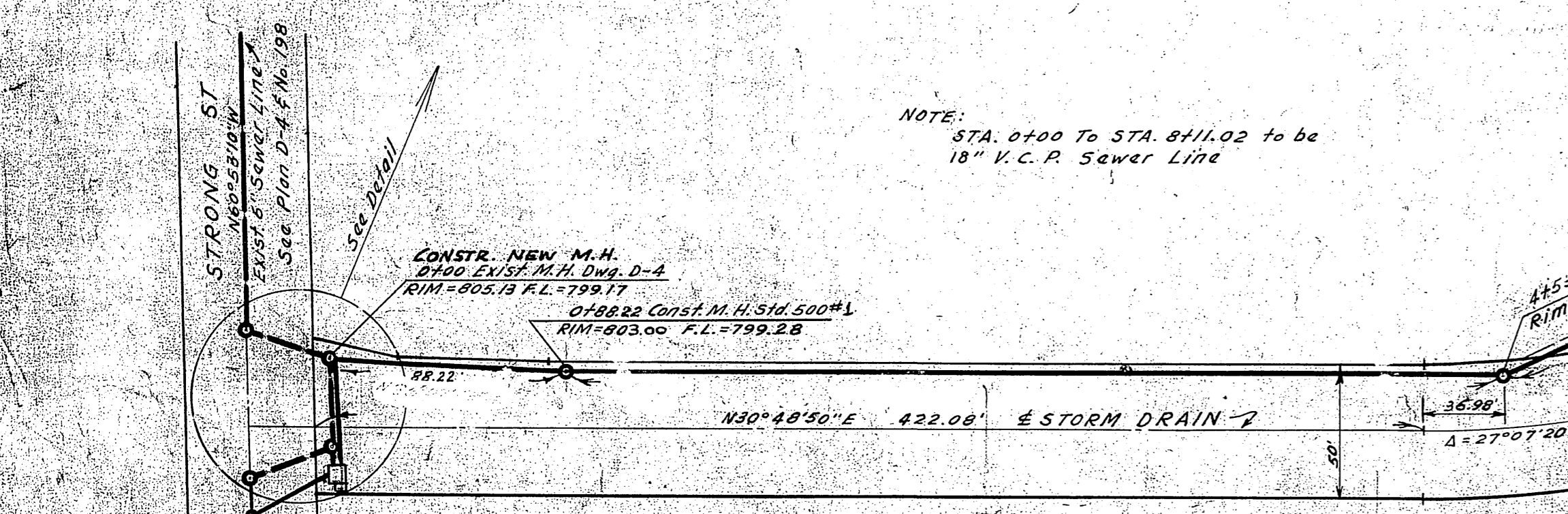
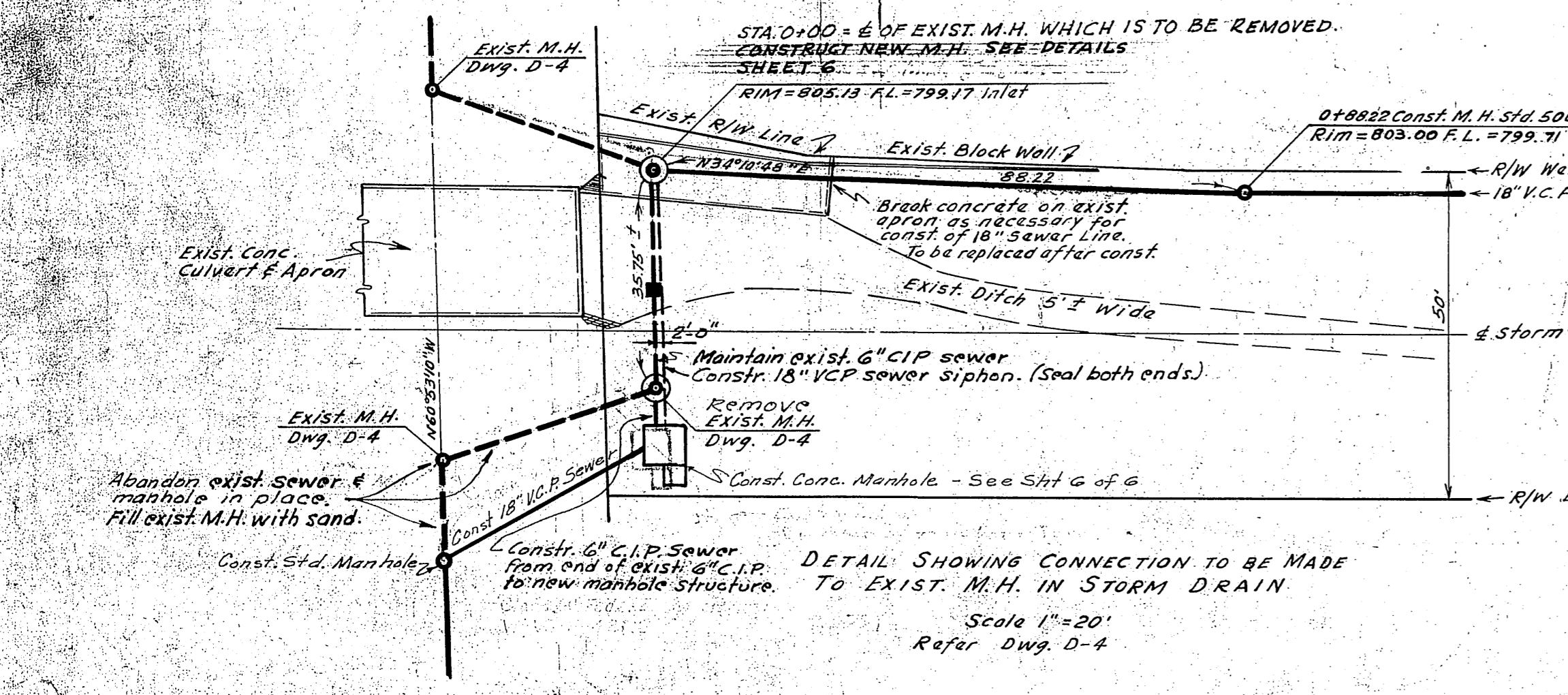
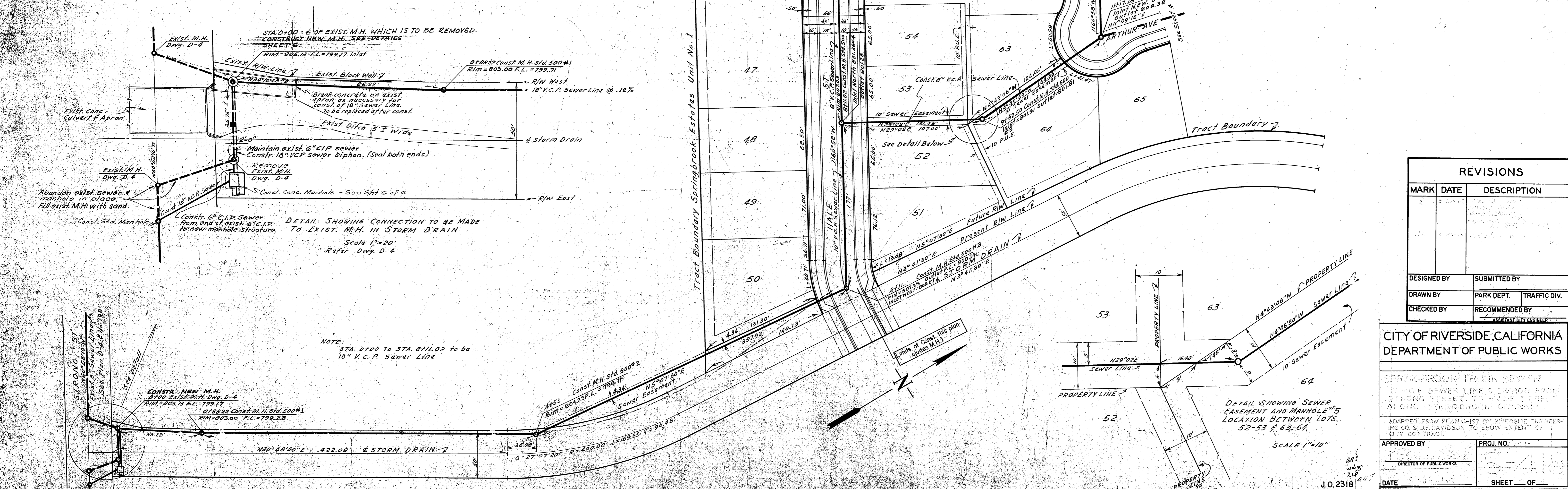
ADAPTED FROM PLAN S-197 BY RIVERSIDE ENGINEERING CO. & J.F. DAVIDSON TO SHOW EXTENT OF CITY CONTRACT.

5048
S-418
5-29-63
1 2

Indexed with



B.M. LEAD & TACK AT E.C.R. OF SOUTH WEST CORNER OF MAIN ST AND STRONG ST. ELEV = 806.58



| REVISIONS | | |
|-----------|------|-------------|
| MARK | DATE | DESCRIPTION |
| | | |
| | | |
| | | |

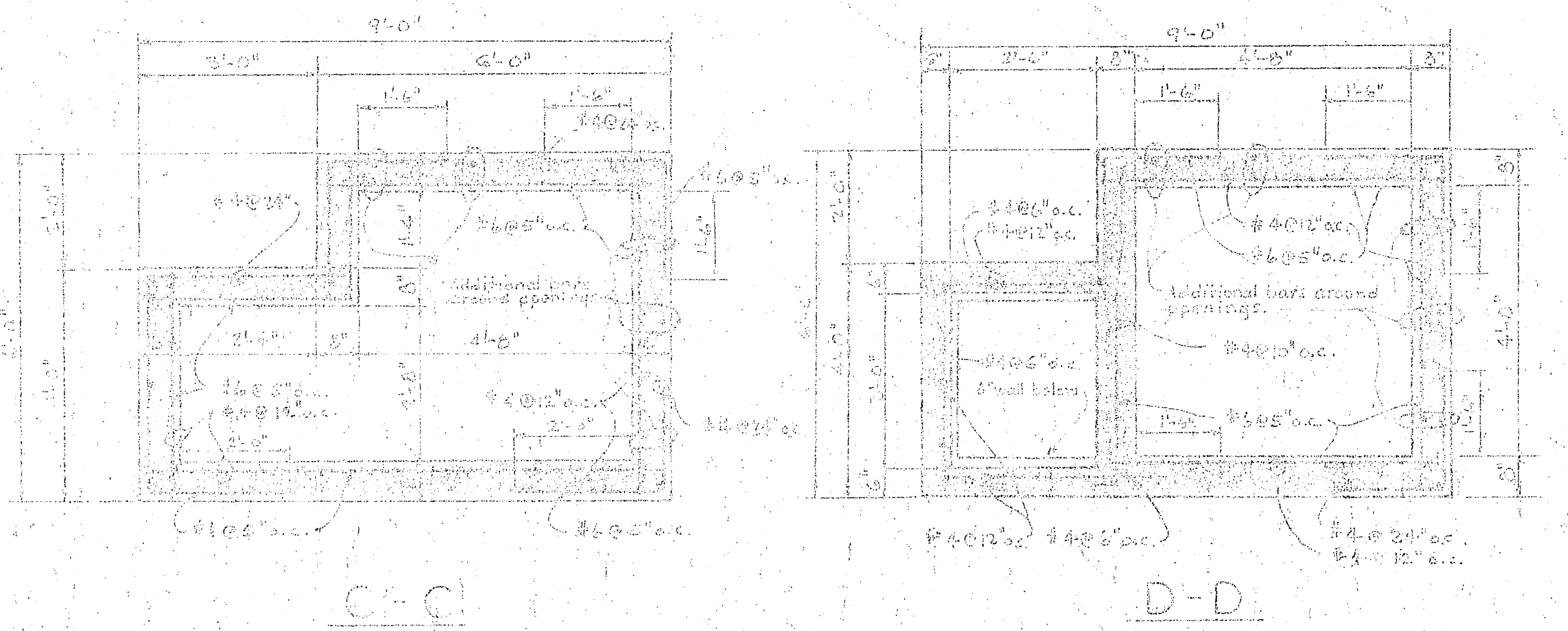
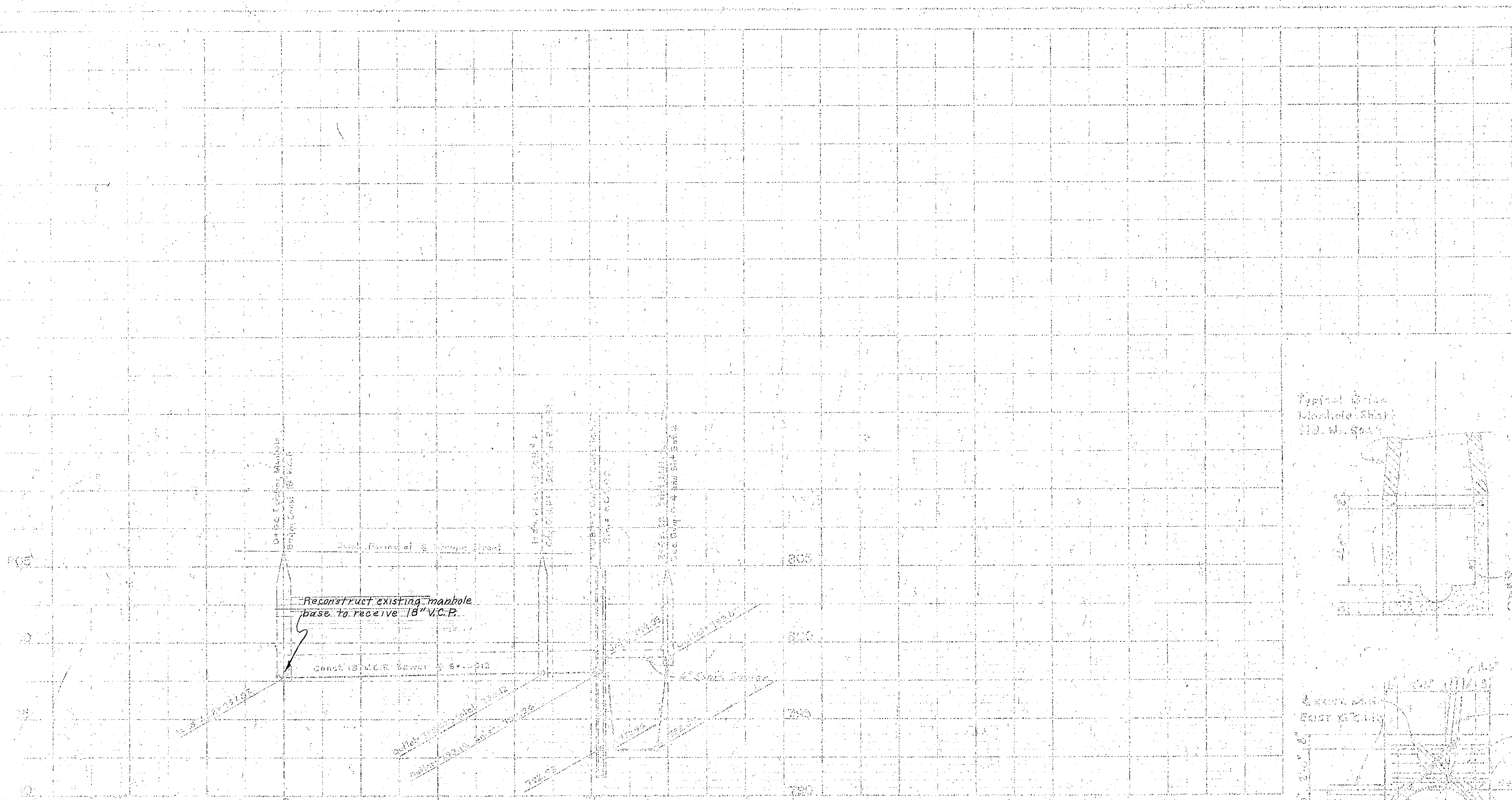
CITY OF RIVERSIDE, CALIFORNIA
 DEPARTMENT OF PUBLIC WORKS

SPRINGCROOK TRUNK SEWER
 18" V.C.P. SEWER LINE & SYPHON FROM STRONG STREET TO HALE STREET ALONG SPRINGCROOK CHANNEL

APPROVED BY: [Signature] PROJ. NO. 5-418
 DATE: J.O. 2318 SHEET OF

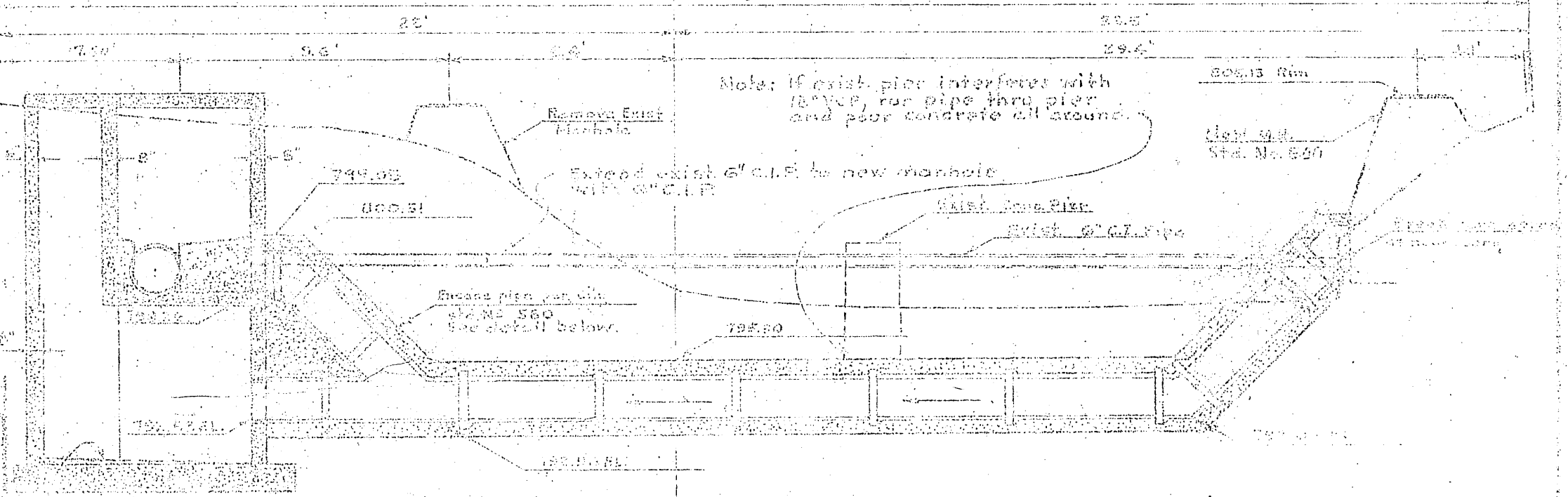
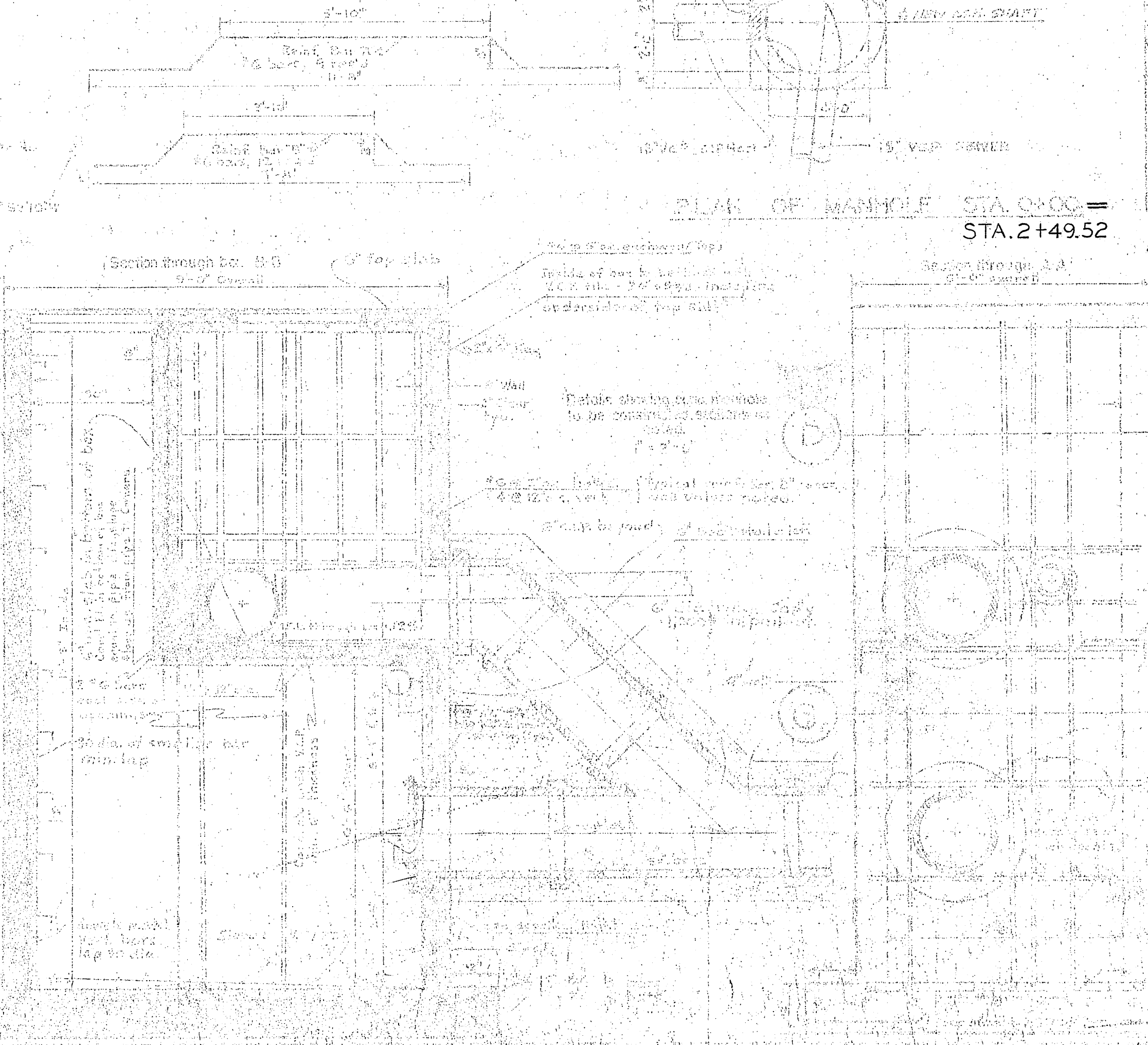
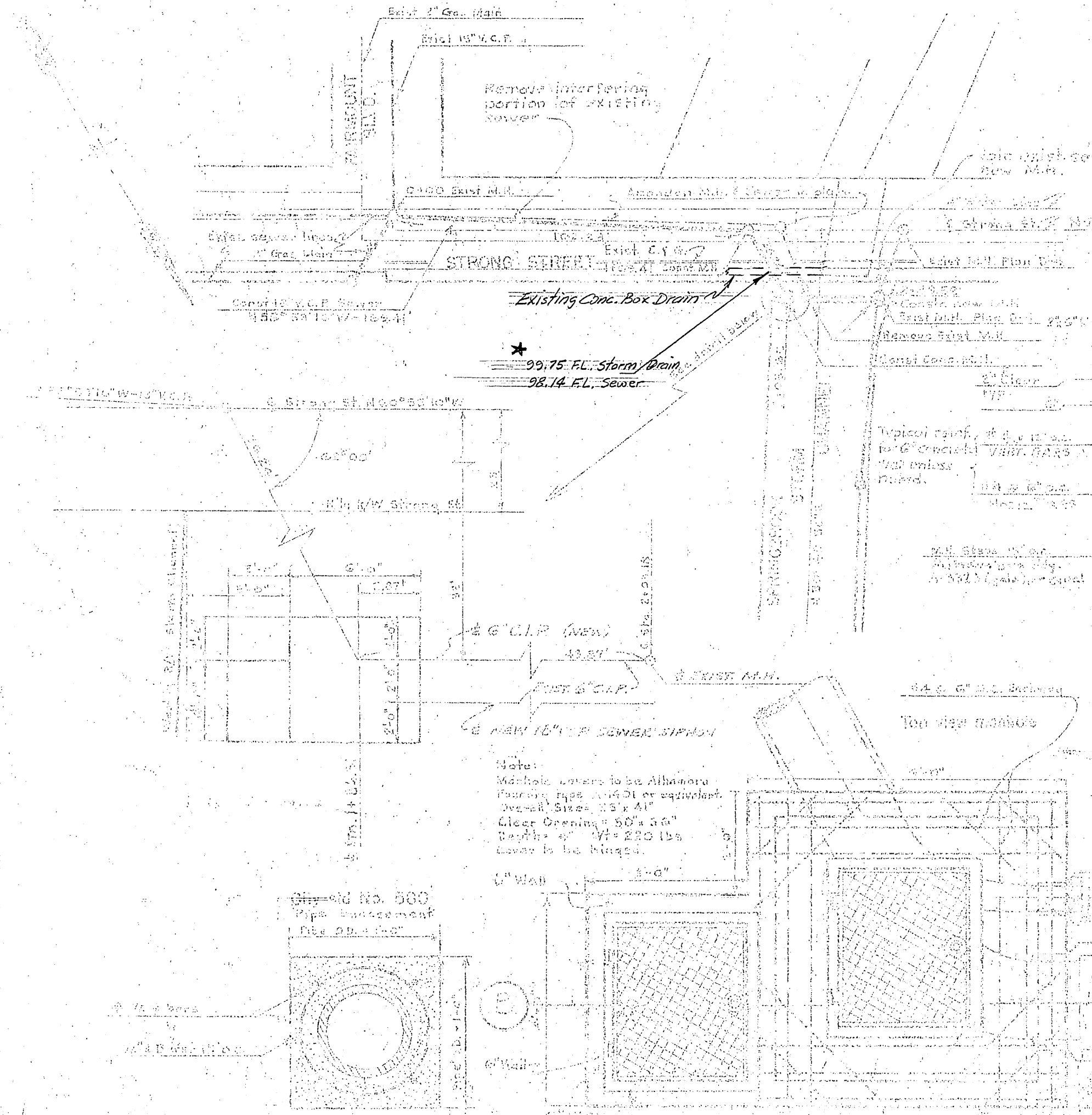
| NO. | DATE | BY | DESCRIPTION |
|-----|------|----|-------------|
| | | | |

| NO. | DATE | BY | DESCRIPTION |
|-----|------|----|-------------|
| | | | |



SECTIONS THRU MANHOLE 2+06.65
SHOWING REINFORCING STEEL PLACING

- GENERAL NOTES
1. All concrete shall have a minimum 28 day comp. strength of 3000 P.S.I.
 2. Provide spacers, chairs, etc. as required to position rebar, steel.
 3. Location of all four joints must be approved by the engineer in all station end drawings.
 4. B.M. found and located E.C.R. of South West corner of Alan Street Strong St. ELEV. 206.58



SECTION THRU SIPHON THRU C of 18" V.C.P.

NOTE: SEAL EACH END OF 18" SIPHON WITH MIN. 3" THICK CONC. BLOCK & MORTAR.

| REVISIONS | |
|-----------|-------------|
| NO. | DESCRIPTION |
| | |
| | |

William D. Gardner

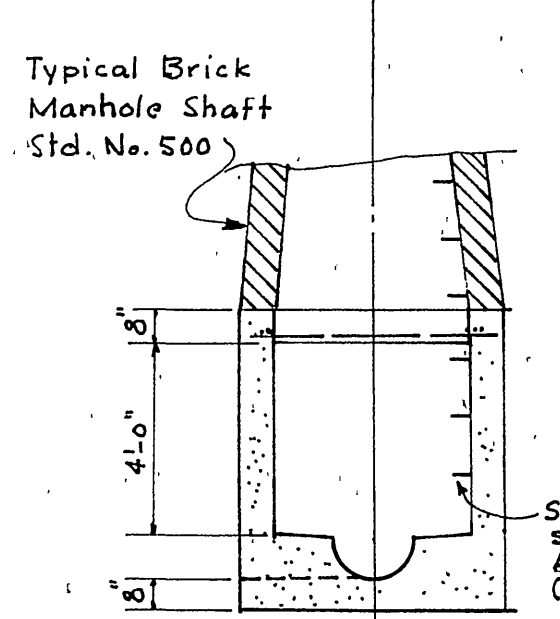
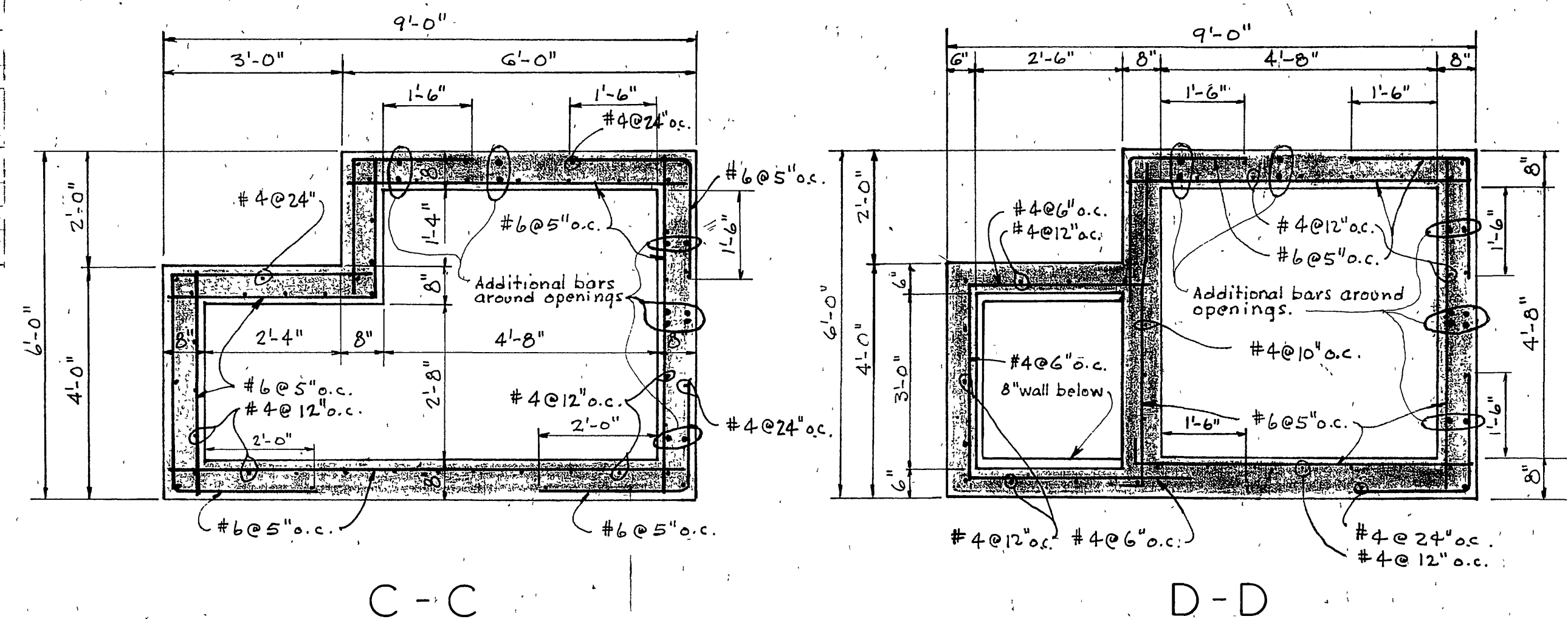
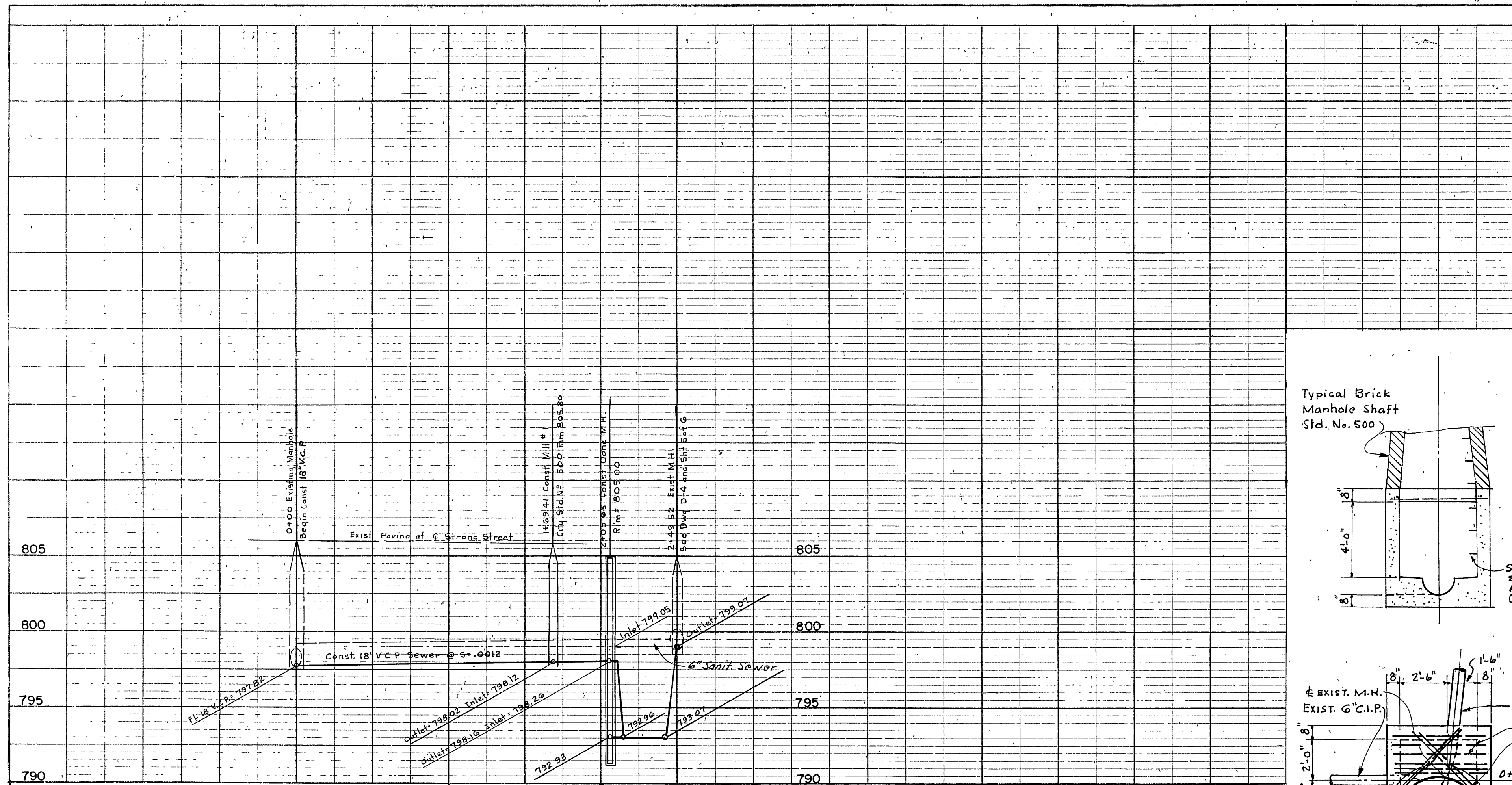
S.H.K. & A.S. Chul

CITY OF RIVERSIDE, CALIFORNIA
DEPARTMENT OF PUBLIC WORKS

**SPRINGBROOK TRUNK SEWER
18" V.C.P. SEWER LINE & SIPHON FROM
STRONG STREET TO HALE STREET
ALONG SPRINGBROOK CHANNEL.**

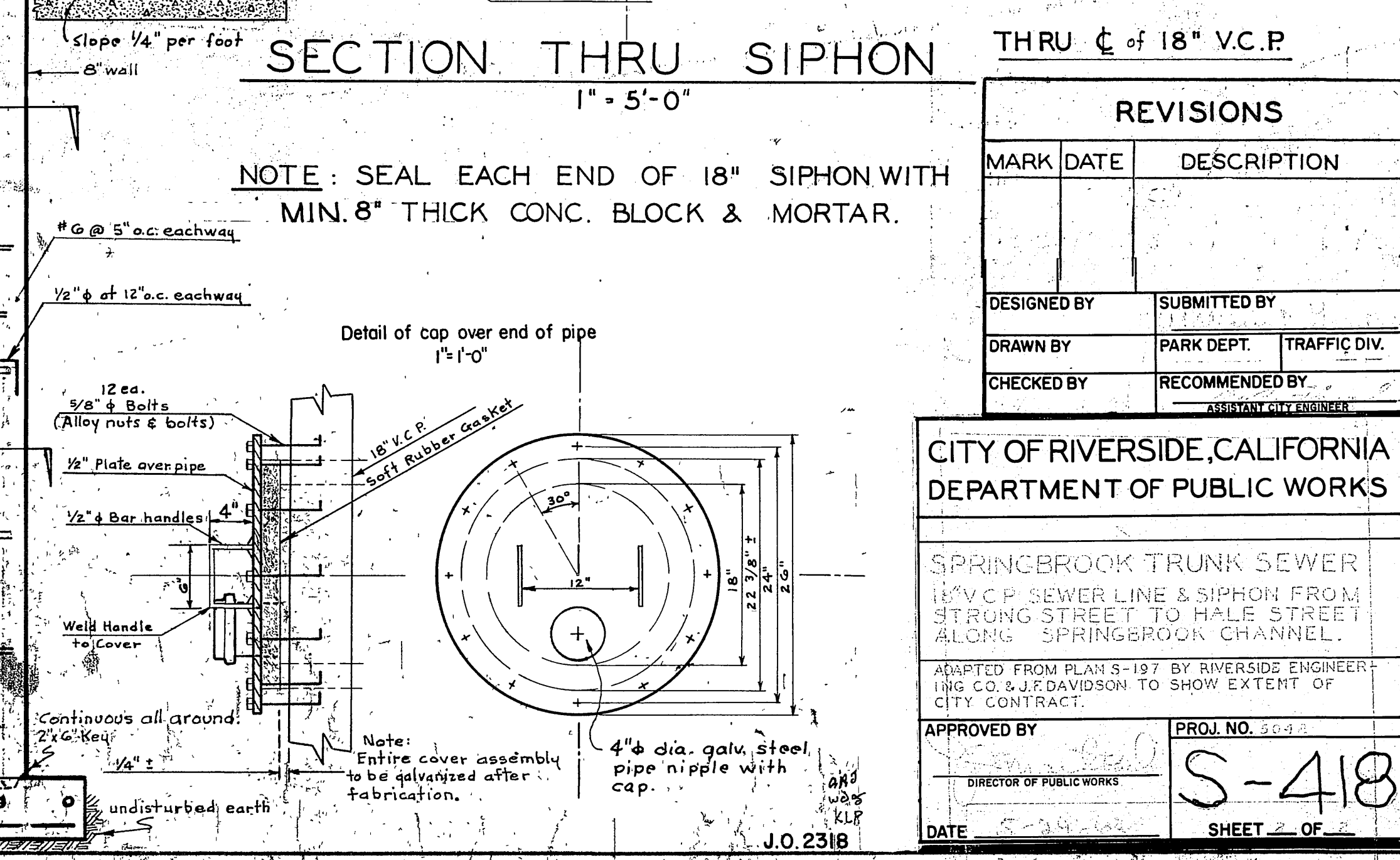
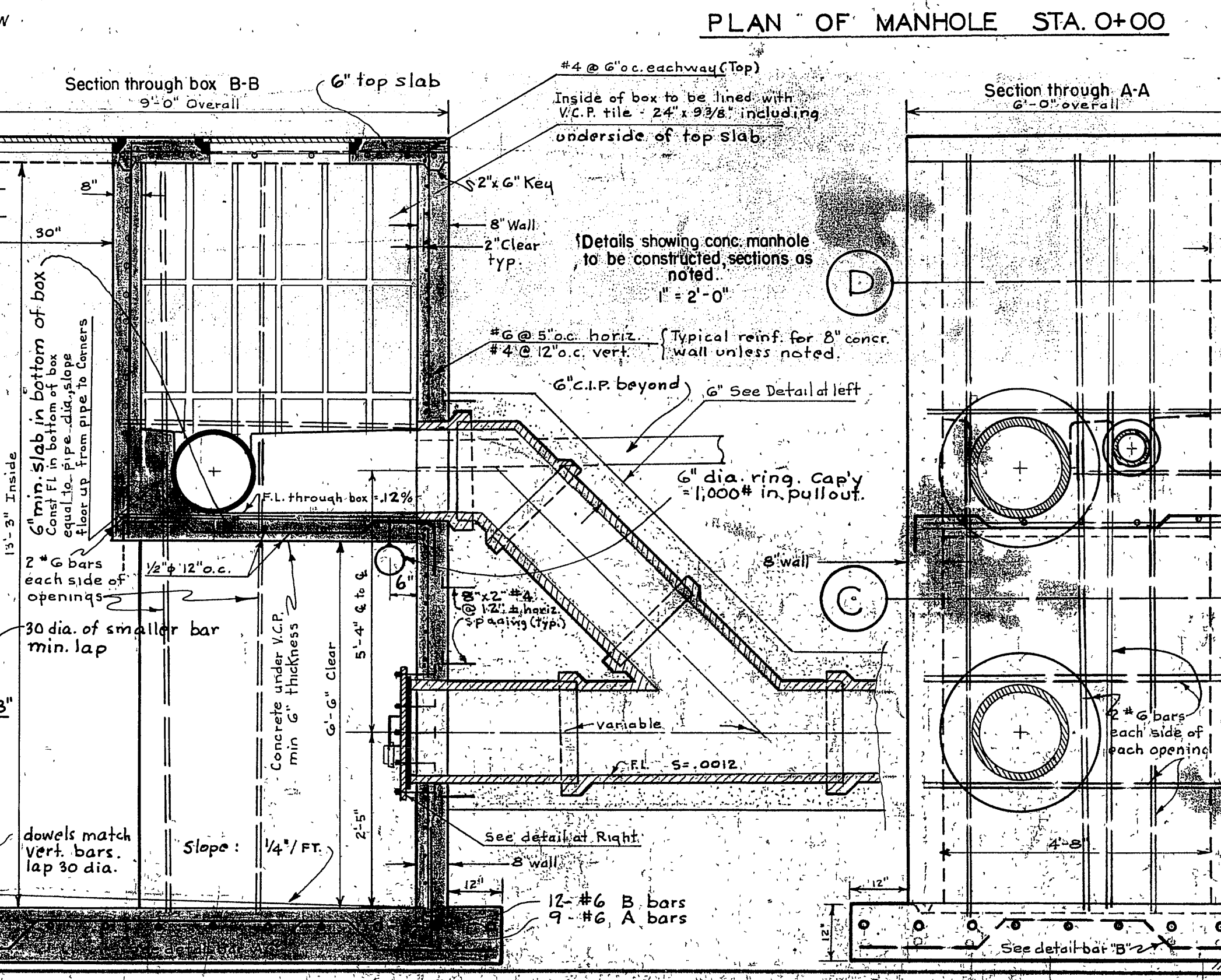
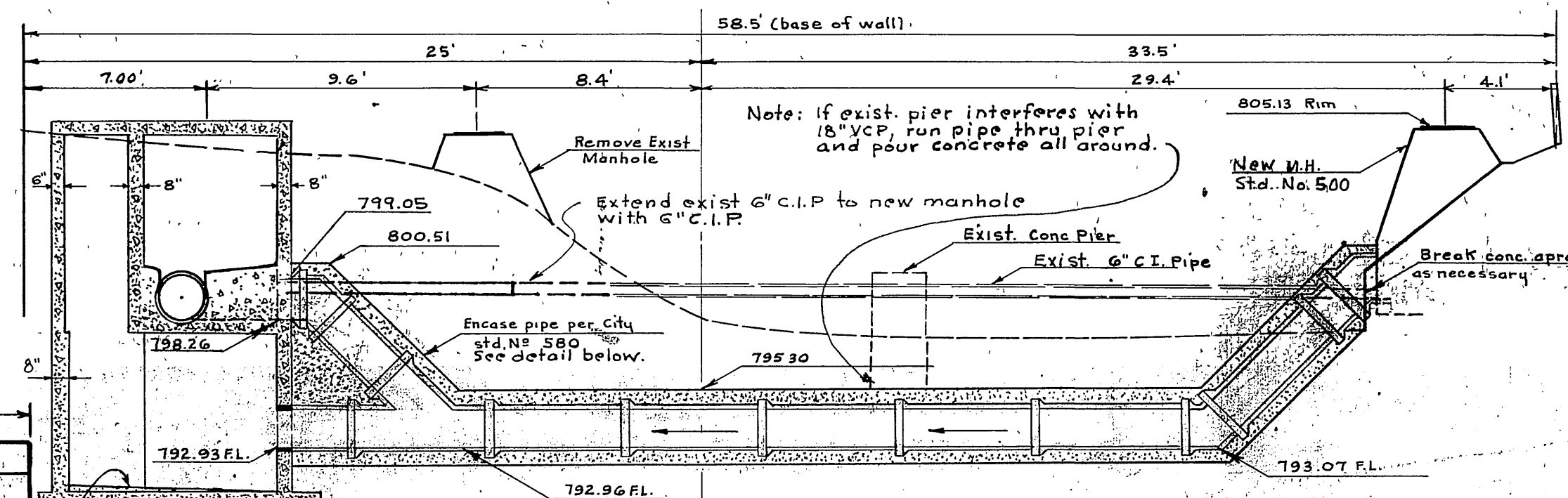
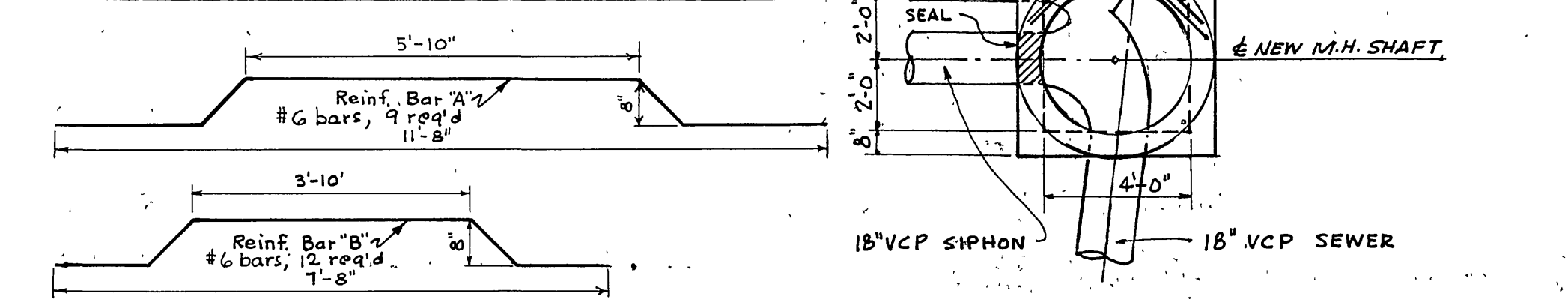
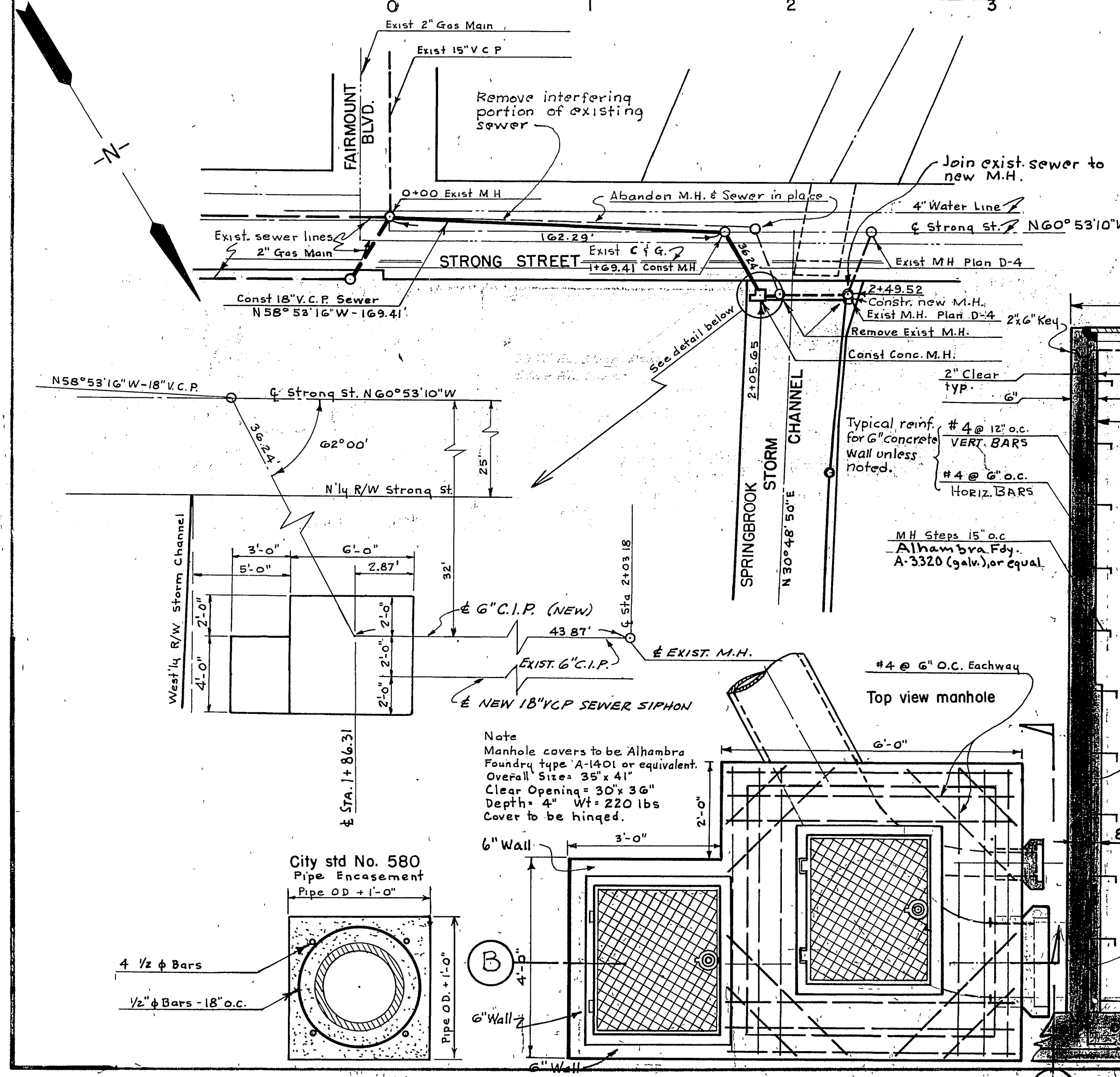
ADAPTED FROM PLAN S-197 BY RIVERSIDE ENGINEERING CO. & J. DAVIDSON TO SHOW EXTENT OF CITY CONTRACT.

5048
S-418
5-29-63



SECTIONS THRU MANHOLE 2+05.65
SHOWING REINFORCING STEEL PLACING

- GENERAL NOTES**
- All concrete shall have a minimum 28 day comp. strength of 3000 P.S.I.
 - Provide spacers, Chairs, etc. as required to position reinf. steel.
 - Location of all pour joints must be approved by the engineer if not shown on drawings.
 - 4 M. Lead and tack of E.C.R. of South West corner of Main St and Strong St. ELEV. 806.58



| REVISIONS | |
|-----------|------|
| MARK | DATE |
| | |
| | |

| | |
|-------------|-------------------------|
| DESIGNED BY | SUBMITTED BY |
| DRAWN BY | PARK DEPT. TRAFFIC DIV. |
| CHECKED BY | RECOMMENDED BY |

CITY OF RIVERSIDE, CALIFORNIA
DEPARTMENT OF PUBLIC WORKS

SPRINGBROOK TRUNK SEWER
18" V.C.P. SEWER LINE & SYPHON FROM STRONG STREET TO HALE STREET ALONG SPRINGBROOK CHANNEL.

APPROVED BY: **S-418**

DATE: _____

PROJ. NO. 30-3-2

SHEET OF

| | | | |
|-----------|-----------|----|------|
| PROFILE | SUBMITTED | BY | DATE |
| NOTE BOOK | PLOTTED | BY | DATE |
| NO. | DATE | BY | DATE |

| | | | |
|-----------|-----------|----|------|
| PLAN | SUBMITTED | BY | DATE |
| NOTE BOOK | PLOTTED | BY | DATE |
| NO. | DATE | BY | DATE |