

**GENERAL NOTES**

- All types and inlets to be installed in the field. All manholes to be Riverside City Standard No. 500, unless otherwise noted on plan. Maximum vertical spacing of sizes in all manholes shall be 3".
- All laterals to be 4" and extended to the property line.
- All construction shall be in accordance with Standards and Specifications No. 44 of the City of Riverside, Department of Public Works. Plans shall be based on base II, Standard Drawing No. 452.
- It shall be the responsibility of the contractor to locate the right of way in accordance with the provisions of law as if it were a public utility in existing right of way lines and adjacent property, and to give notice to the City of Riverside.
- Joints in vitrified clay pipe shall conform to ASTM Standard C-425-60-T, or the latest revision thereto.

**BENCH MARKS:** 5 1/2" I. IN WEST CURB OF CHICAGO AVENUE 140' NORTH OF C.R. MONUMENT AT CHICAGO & LE CONTE AVE. ELEV. = 983.91

**I.B.M.:** SPIKE IN R.P. No. 22201-J ON WEST SIDE CANAL ELEV. = 1017.91

REVISIONS		
MARK	DATE	DESCRIPTION
*	3/24/64	As Built RK

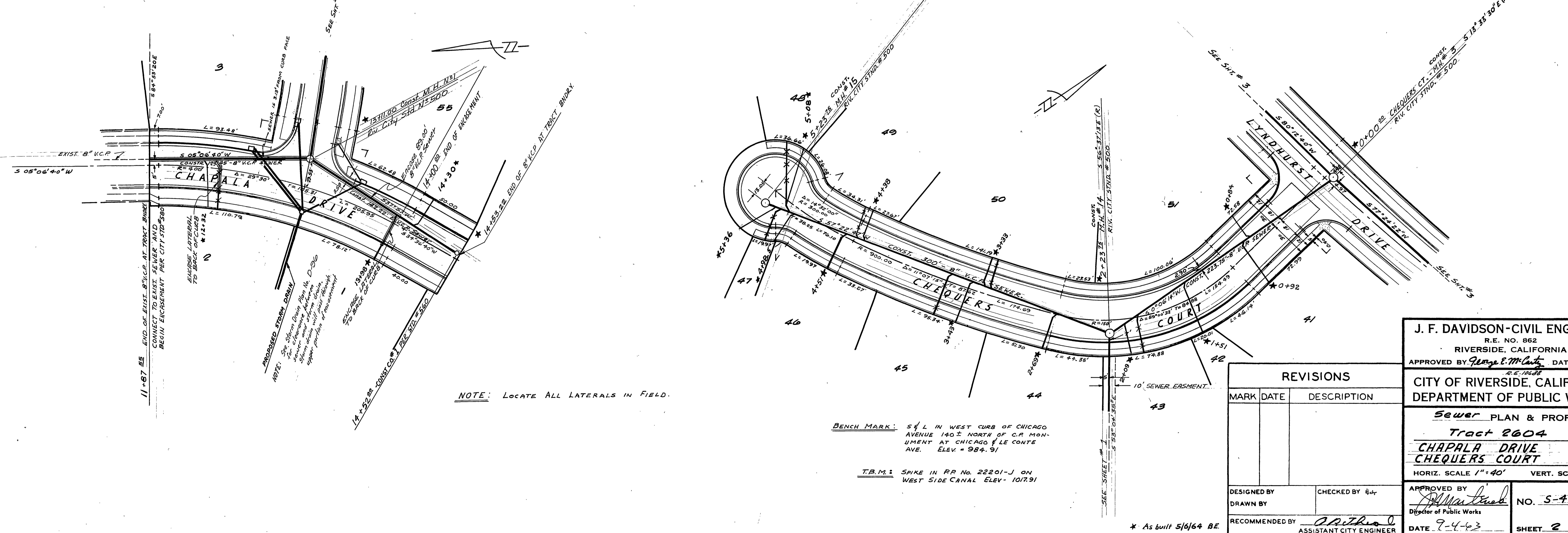
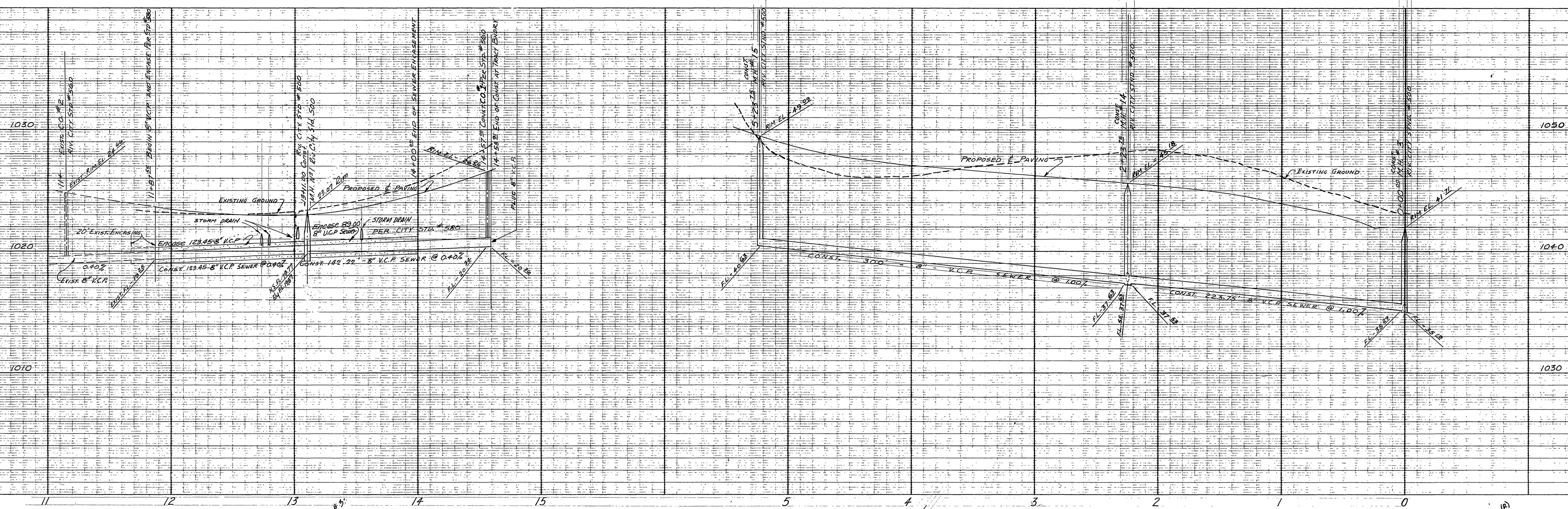
**J. F. DAVIDSON-CIVIL ENGINEER**  
 R.E. NO. 862  
 RIVERSIDE, CALIFORNIA  
 APPROVED BY *George M. Cady* DATE 4/1/64  
 R.E. 10648

**CITY OF RIVERSIDE, CALIFORNIA**  
**DEPARTMENT OF PUBLIC WORKS**

**SEWER PLAN & PROFILE**  
**Tract 2604**  
**MONTE VISTA DRIVE**  
**EASEMENT**  
 HORIZ. SCALE 1"=40' VERT. SCALE 1"=4'

DESIGNED BY	CHECKED BY <i>E.H.</i>	APPROVED BY <i>J. F. Davidson</i>
DRAWN BY		Director of Public Works
RECOMMENDED BY <i>A. J. ...</i>	ASSISTANT CITY ENGINEER	DATE 9-4-63

NO. 5-421  
 SHEET 1 OF 5



11+87.53 END OF EXIST. 8" V.C.P. AT TRACT BOUNDARY  
CONNECT TO EXIST. SEWER AND  
BEGIN ENCROACHMENT PER CITY STD #500

NOTE: See Storm Drain Plan for  
Location of Storm Drain  
Storm man holes shall be placed  
upper portion of manhole  
to back of curb

NOTE: LOCATE ALL LATERALS IN FIELD.

BENCH MARK: 5' L IN WEST CURB OF CHICAGO AVENUE 140' NORTH OF C.R. MONUMENT AT CHICAGO & LE CONTE AVE. ELEV. = 984.91

T.B.M.: SPIKE IN R.P. NO. 22201-J ON WEST SIDE CANAL ELEV. - 1017.91

REVISIONS		
MARK	DATE	DESCRIPTION

**J. F. DAVIDSON-CIVIL ENGINEER**  
R.E. NO. 862  
RIVERSIDE, CALIFORNIA  
APPROVED BY *George E. McCarty* DATE 4/9/43  
CITY OF RIVERSIDE, CALIFORNIA  
DEPARTMENT OF PUBLIC WORKS

**Sewer PLAN & PROFILE**  
Tract 2604  
**CHAPALA DRIVE**  
**CHEQUERS COURT**  
HORIZ. SCALE 1"=40' VERT. SCALE 1"=4'

DESIGNED BY  
DRAWN BY  
RECOMMENDED BY *P. A. ...*  
ASSISTANT CITY ENGINEER

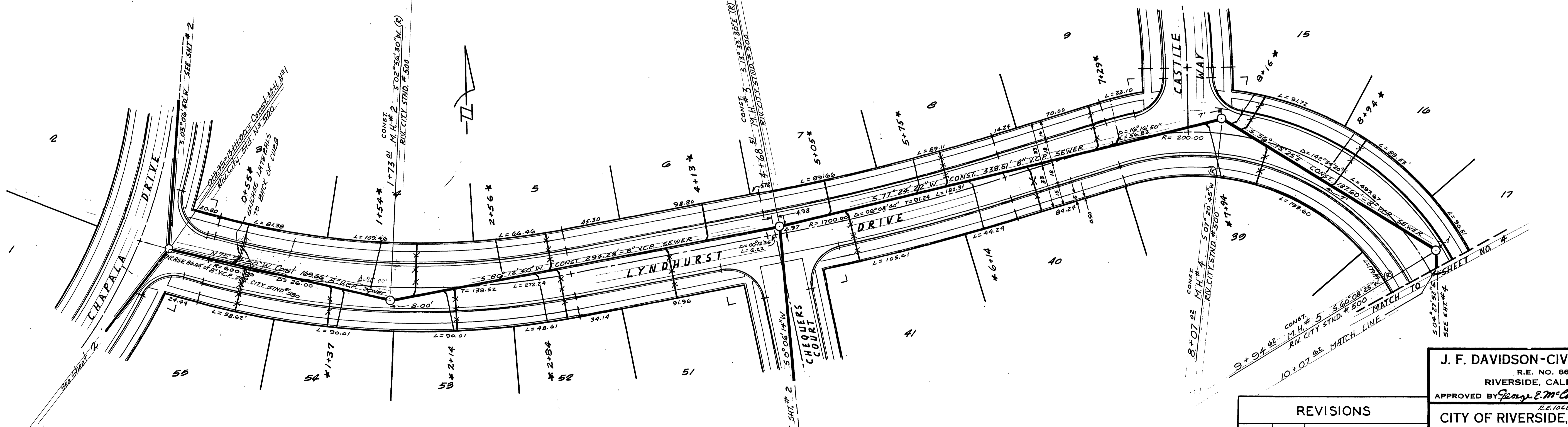
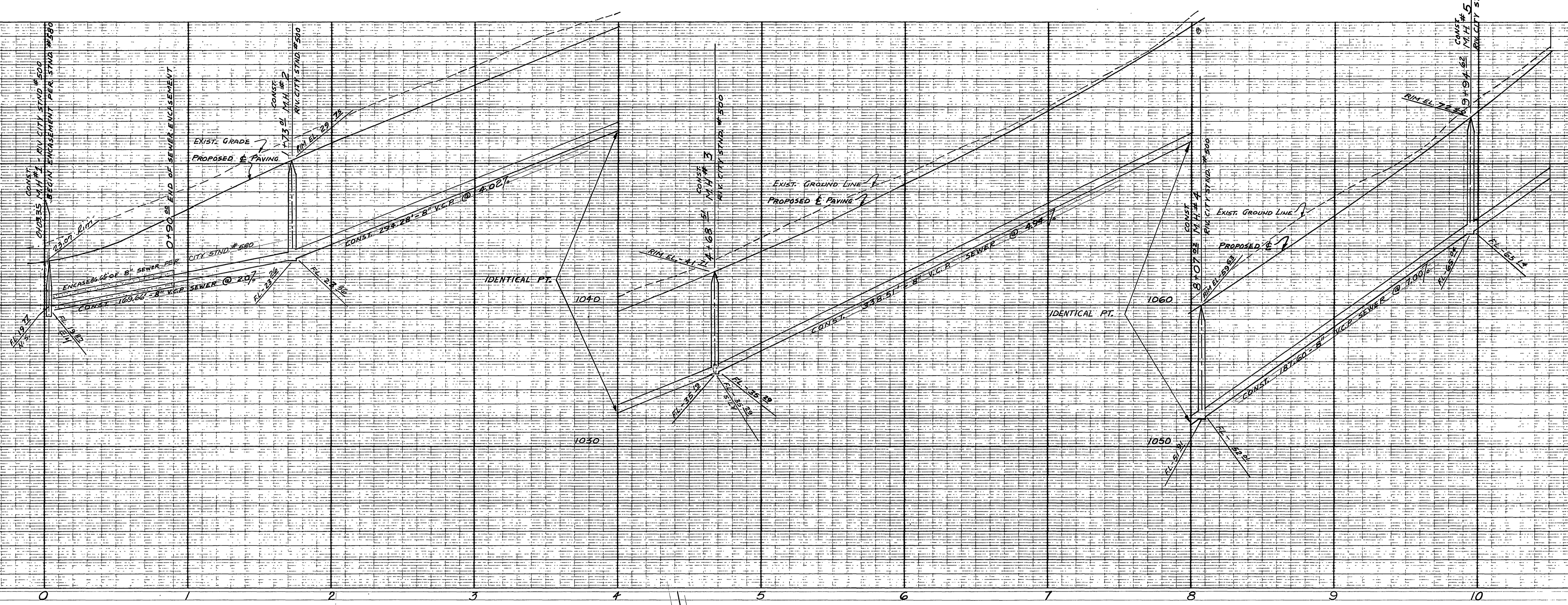
CHECKED BY *...*  
APPROVED BY *George E. McCarty*  
Director of Public Works

DATE 7-4-43

NO. 5-421  
SHEET 2 OF 5

\* As built 5/6/64 BE

1030  
1020  
1010



NOTE: LOCATE ALL LATERALS IN FIELD.

BENCH MARK: S&L IN WEST CURB OF CHICAGO AVENUE 140' NORTH OF C.R. MONUMENT AT CHICAGO & LE CONTE AVE. ELEV. - 984.91

T.B.M.: SNAKE IN RR No. 22201-J ON WEST SIDE CANAL ELEV. - 101791

\* As built 5/5/64 BE.

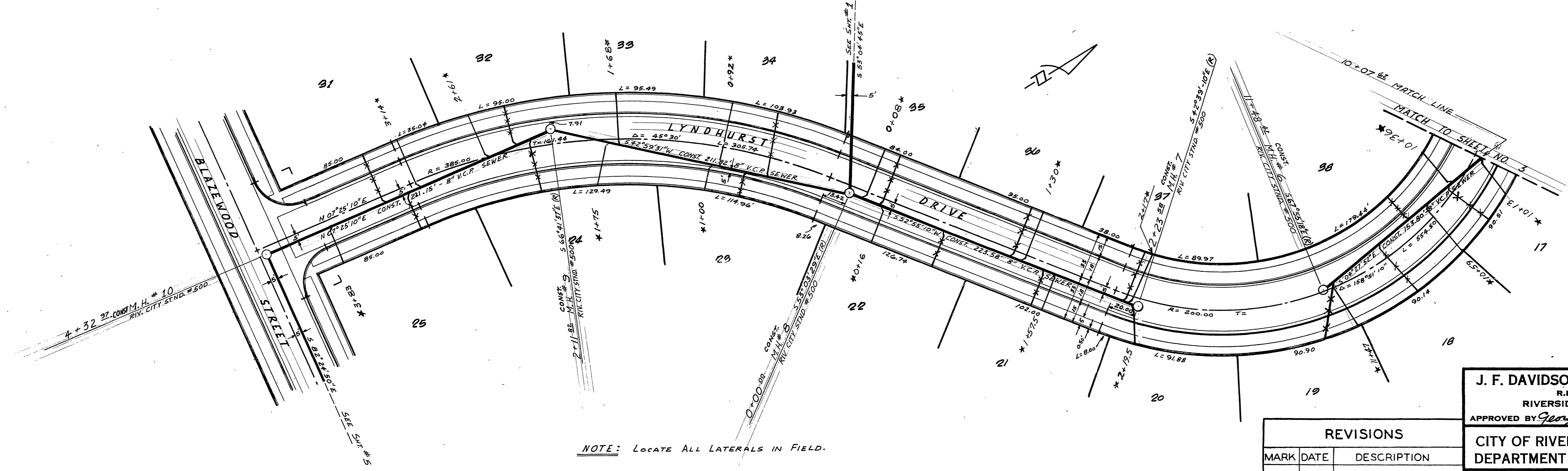
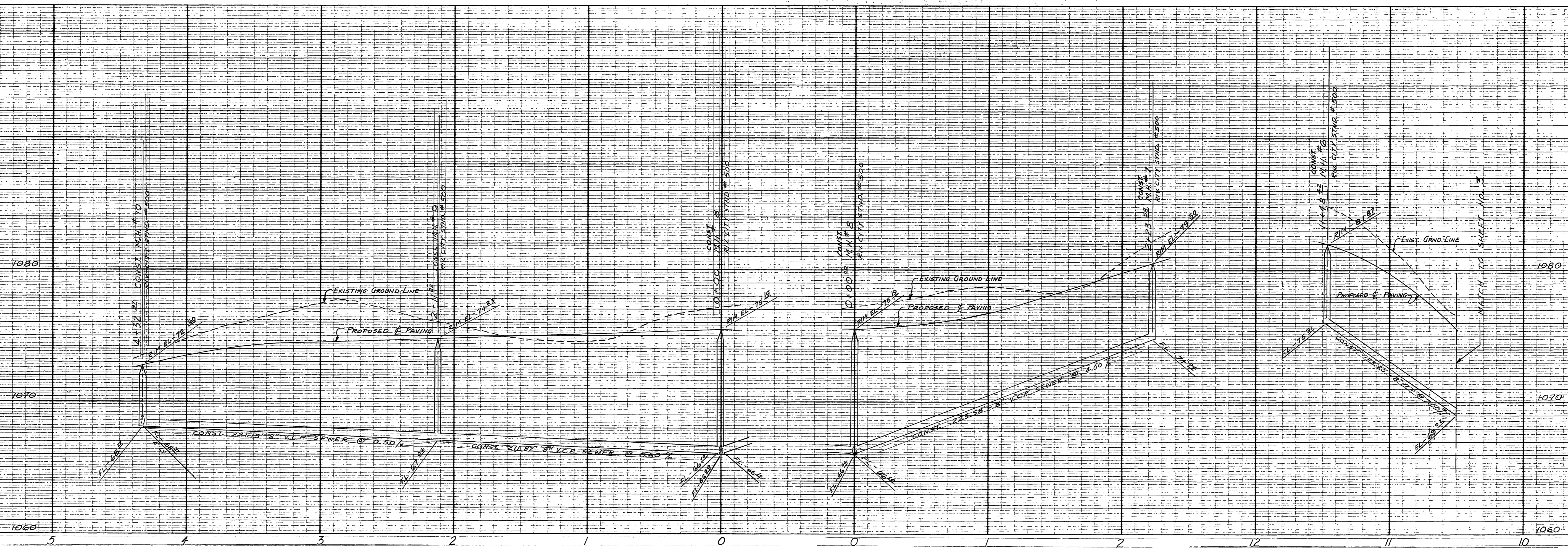
REVISIONS	
MARK	DESCRIPTION

**J. F. DAVIDSON - CIVIL ENGINEER**  
R.E. NO. 862  
RIVERSIDE, CALIFORNIA  
APPROVED BY *George E. McCarty* DATE 4/1/63  
CITY OF RIVERSIDE, CALIFORNIA  
DEPARTMENT OF PUBLIC WORKS

**Sewer PLAN & PROFILE**  
**Tract 2604**  
**LYNDHURST DRIVE**

HORIZ. SCALE 1"=40' VERT. SCALE 1"=4'

DESIGNED BY	CHECKED BY <i>Ed</i>
DRAWN BY	APPROVED BY <i>J. F. Davidson</i> Director of Public Works
RECOMMENDED BY <i>A. B. ...</i> ASSISTANT CITY ENGINEER	NO. 5-421
DATE 9-4-63	SHEET 3 OF 5



NOTE: LOCATE ALL LATERALS IN FIELD.

BENCH MARK 5 1/4" I IN WEST CURB OF CHICAGO AVENUE 140' NORTH OF C.R. MONUMENT AT CHICAGO & LE CONTE AVE. ELEV. - 384.91

T.B.M. SPIKE IN RR No. 22201-J ON WEST SIDE CANAL ELEV. - 1017.91

\* As built 5/6/64 B.E.

REVISIONS		
MARK	DATE	DESCRIPTION

**J. F. DAVIDSON-CIVIL ENGINEER**  
 R.E. NO. 862  
 RIVERSIDE, CALIFORNIA  
 APPROVED BY *George E. McIntyre* DATE 6/1/63  
 R.E. 10188  
**CITY OF RIVERSIDE, CALIFORNIA**  
**DEPARTMENT OF PUBLIC WORKS**

**Sewer PLAN & PROFILE**  
**Tract 2604**  
**LYNDHURST DRIVE**  
 HORIZ. SCALE 1"=40' VERT. SCALE 1"=4'

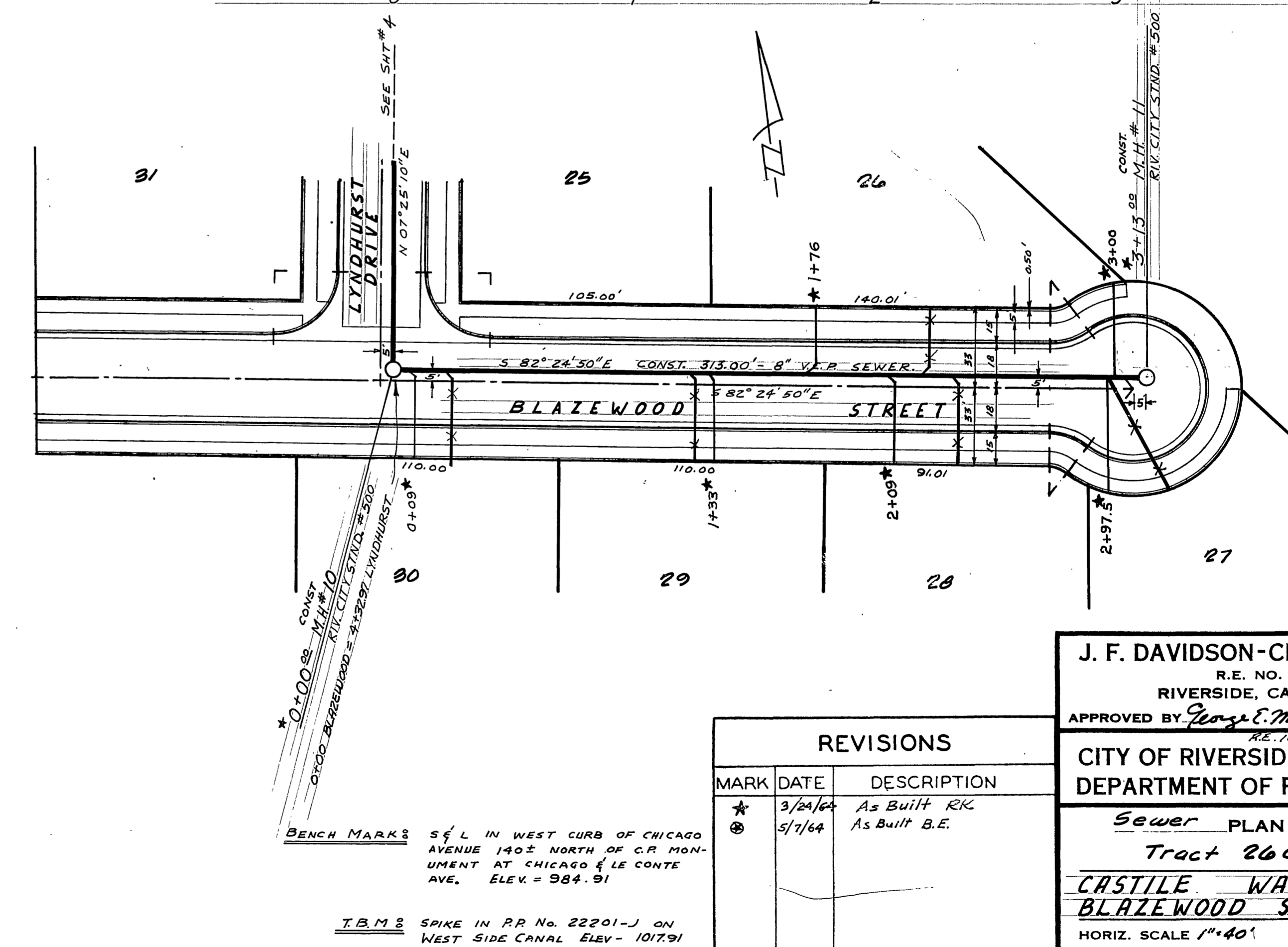
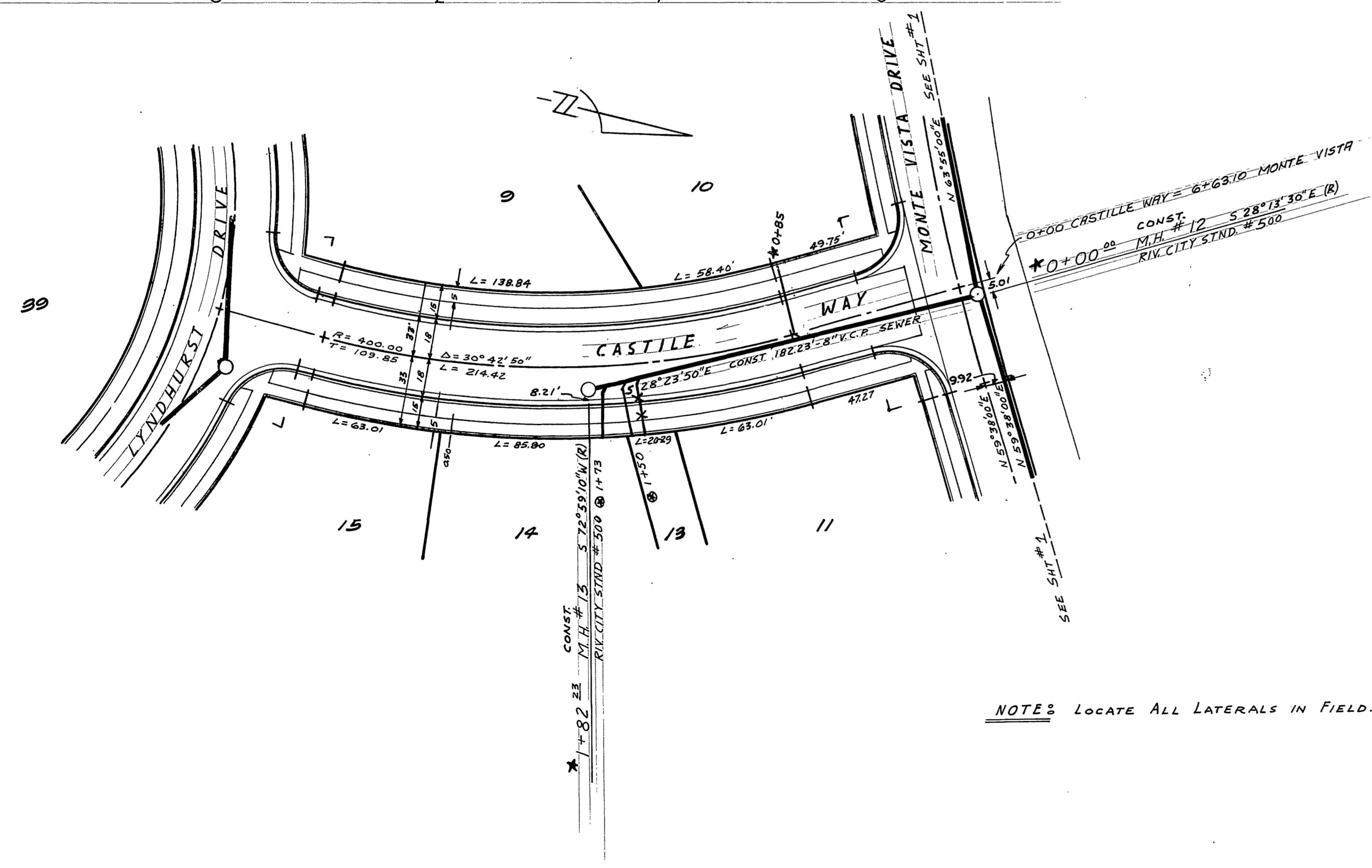
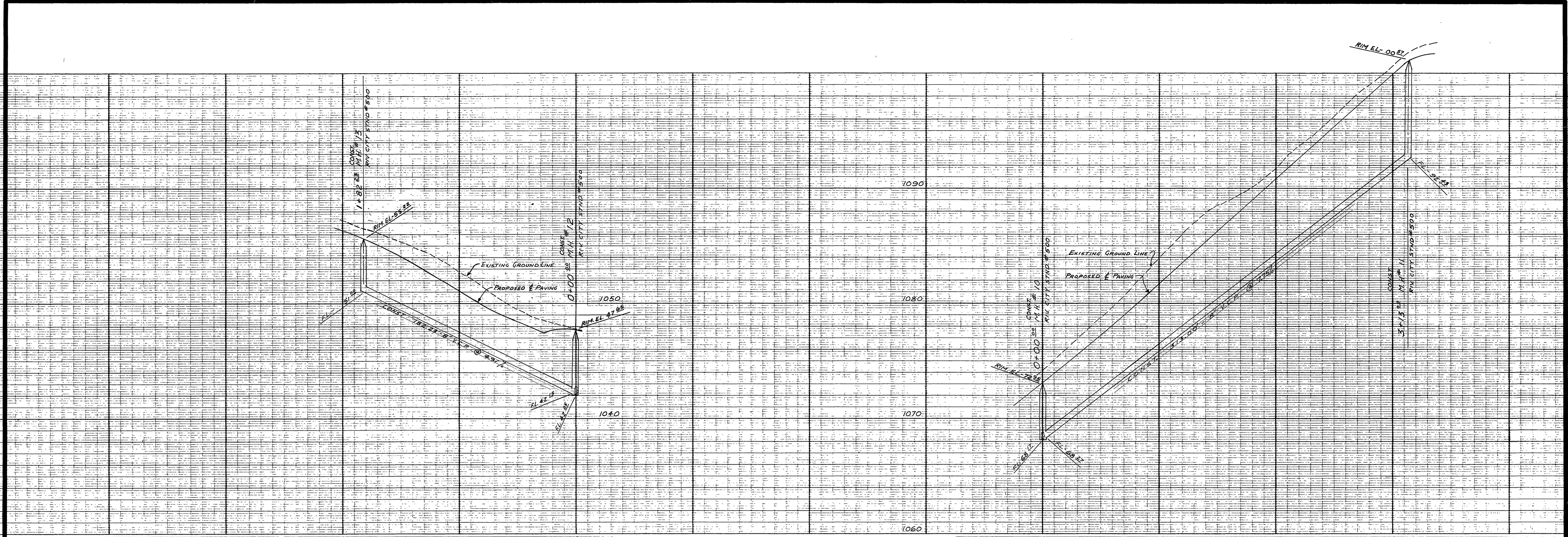
DESIGNED BY  
 DRAWN BY  
 RECOMMENDED BY *A. J. ...*  
 ASSISTANT CITY ENGINEER

CHECKED BY *Ed.*

APPROVED BY *George E. McIntyre*  
 Director of Public Works

DATE 9-4-63

NO. 5-421  
 SHEET 4 OF 5



NOTE: LOCATE ALL LATERALS IN FIELD.

BENCH MARK: S & L IN WEST CURB OF CHICAGO AVENUE 140' NORTH OF C.R. MONUMENT AT CHICAGO & LE CONTE AVE. ELEV. = 984.91

I.B.M. SPIKE IN P.P. No. 22201-J ON WEST SIDE CANAL ELEV. = 1017.91

MARK	DATE	DESCRIPTION
*	3/24/64	As Built R.R.
⊙	5/7/64	As Built B.E.

**J. F. DAVIDSON-CIVIL ENGINEER**  
 R.E. NO. 862  
 RIVERSIDE, CALIFORNIA  
 APPROVED BY *George C. McIntyre* DATE 6/3/62  
 R.E. 10628

**CITY OF RIVERSIDE, CALIFORNIA**  
 DEPARTMENT OF PUBLIC WORKS

**Sewer PLAN & PROFILE**  
**Tract 2604**  
**CASTLE WAY**  
**BLAZEWOOD STREET**

HORIZ. SCALE 1"=40'  
 VERT. SCALE 1"=4'

DESIGNED BY \_\_\_\_\_ CHECKED BY *Ed.*  
 DRAWN BY \_\_\_\_\_  
 RECOMMENDED BY *A.R. Reed* ASSISTANT CITY ENGINEER DATE 2-4-63

APPROVED BY *Michael* Director of Public Works  
 NO. 5-421  
 SHEET 5 OF 5