

- GENERAL NOTES**
- All proposed laterals to be located in the field. All manholes to be Riverdale type, minimum depth 300" unless otherwise noted on plan. Maximum vertical spacing of steps shall conform to A.S.T.M. Standard C-425-607.
 - Laterals to be 4" and extended to the property line.
 - All construction shall be in accordance with standards and specifications of the City of Riverside, Department of Public Works. Piping shall be detailed per Case II, Drawing No. 552.
 - It shall be the responsibility of the contractor to clear the Right of Way in accordance with the provisions of law as it affects each utility including irrigation lines and other encumbrances, and at extra cost to the City of Riverside.
 - Joints in vitrified clay pipe sewers shall conform to A.S.T.M. Standard C-425-607, or the latest revision thereto.

REVISIONS	
MARK	DESCRIPTION
Δ	1-12-63 Lower Sewer M.H. #1, Note C-1, 20' ENH. GEN. PLAN S-436

J. F. DAVIDSON-CIVIL ENGINEER
 R.E. NO. 862
 RIVERSIDE, CALIFORNIA
 APPROVED BY *George E. McLaughlin* DATE 6/10/63
 R.E. 10428

CITY OF RIVERSIDE, CALIFORNIA
 DEPARTMENT OF PUBLIC WORKS

SEWER PLAN & PROFILE
CANYON CREST DRIVE
TRACT 2609

HORIZ. SCALE 1"=40' VERT. SCALE 1"=4'

DESIGNED BY
 DRAWN BY
 RECOMMENDED BY *A. J. Chesebrough* ASSISTANT CITY ENGINEER

APPROVED BY *George E. McLaughlin* DIRECTOR OF PUBLIC WORKS

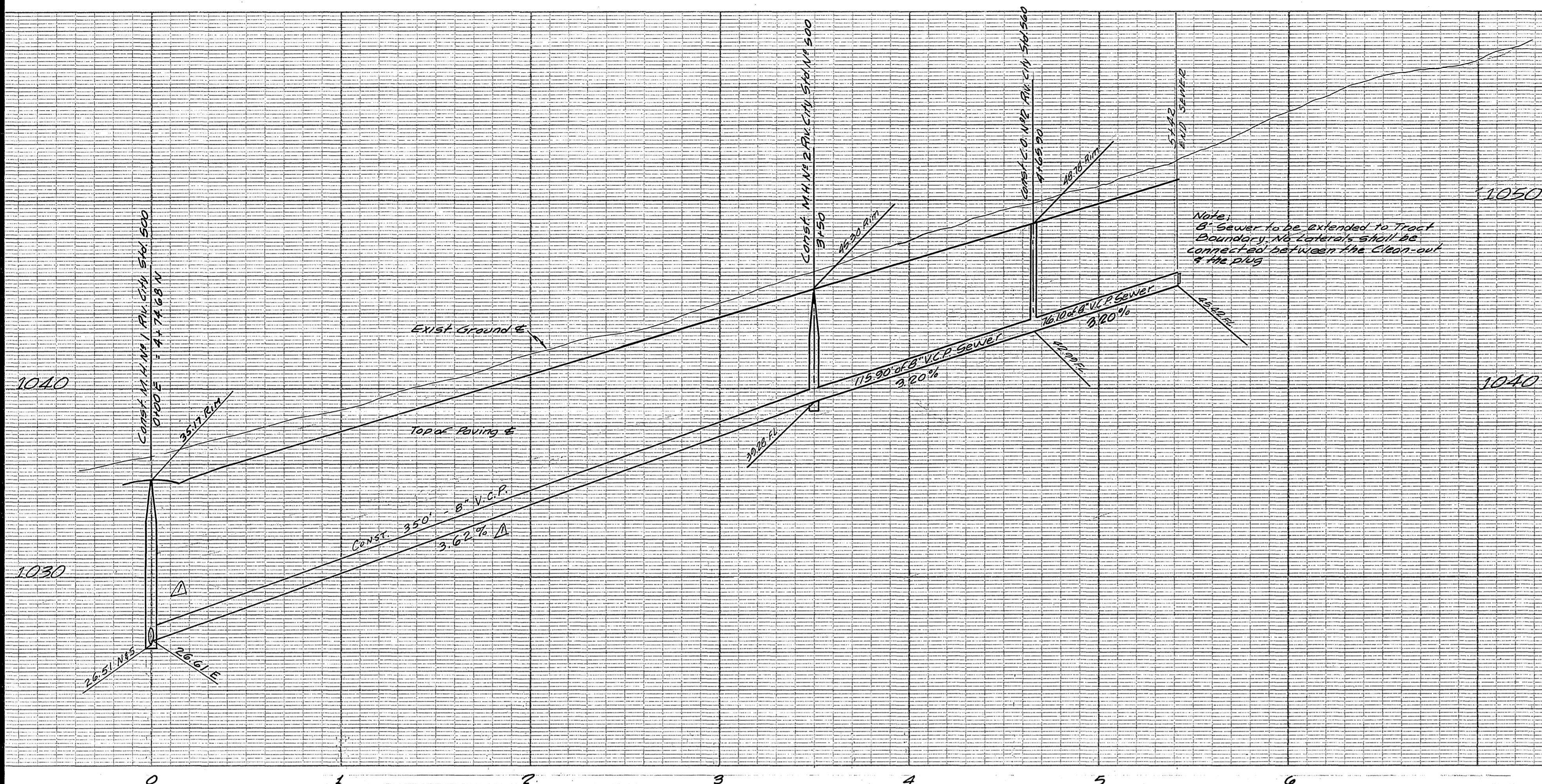
DATE 11-1-63

5-423

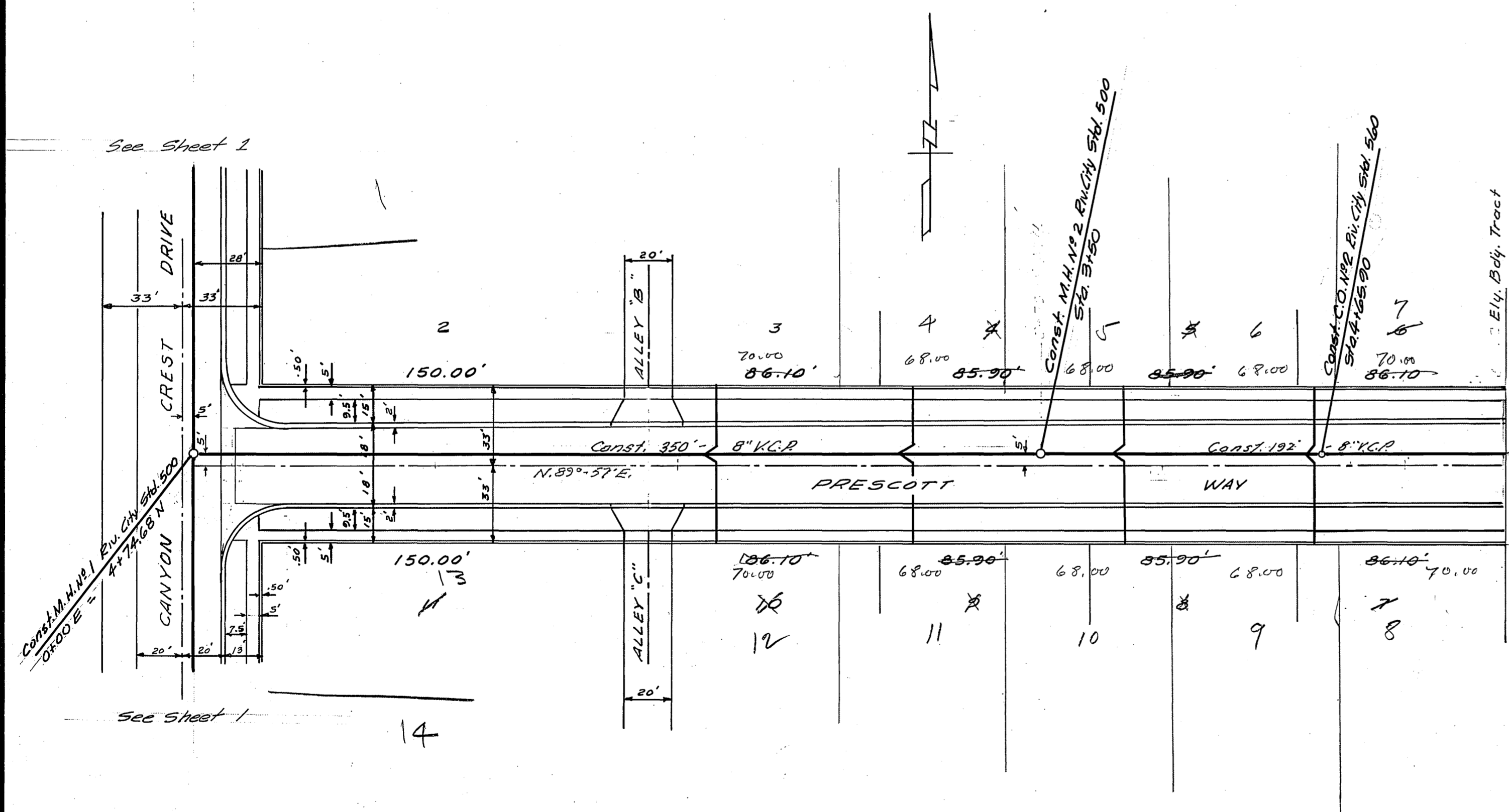
1 2

* AS BUILT 8-24-67 K-27

City B.M. CH-1011 on Ely and Headwell at SW Cor of Lower Massachusetts Area, as per City Map 5-258, Sheet 1. Elev. 963.15



Note:
8" Sewer to be extended to Tract Boundary. No laterals shall be connected between the Clean-out & the plug.



Note:
8" Sewer to be extended to Tract Boundary. No laterals shall be connected between the Clean-out & the plug at end of sewer.

City B.M.
"X" on top of Fire Hydrant at S.E. Corner Canyon Crest Drive & Linden St.
Elev. 1049.08

City B.M.
Chiseled "X" on Ely. and Headwall of S.W. Cor. of (Lots 4 Massachusetts Ave.
Aves. as per City Map 3-258, Sheet 1.
Elev. 963.15

J. F. DAVIDSON - CIVIL ENGINEER
R.E. NO. 862
RIVERSIDE, CALIFORNIA

APPROVED BY *George E. McCarty* DATE 6/18/63
R.E. 10688

CITY OF RIVERSIDE, CALIFORNIA
DEPARTMENT OF PUBLIC WORKS

SEWER PLAN & PROFILE
PRESCOTT WAY
TRACT 2609

HORIZ. SCALE 1"=40' VERT. SCALE 1"=4'

REVISIONS		
MARK	DATE	DESCRIPTION
Δ	1-14-63	LOWER H.H. #1, CHANGE GRADE H.H. #1 TO ENW 200' IRON WOOD

DESIGNED BY _____ CHECKED BY Ron WDS
DRAWN BY _____

RECOMMENDED BY *M.B. Threlk* ASSISTANT CITY ENGINEER DATE 11-1-63

APPROVED BY *J. Davidson* DATE 11-1-63

PROJECT NO. **S-423**

DATE 11-1-63

2 2