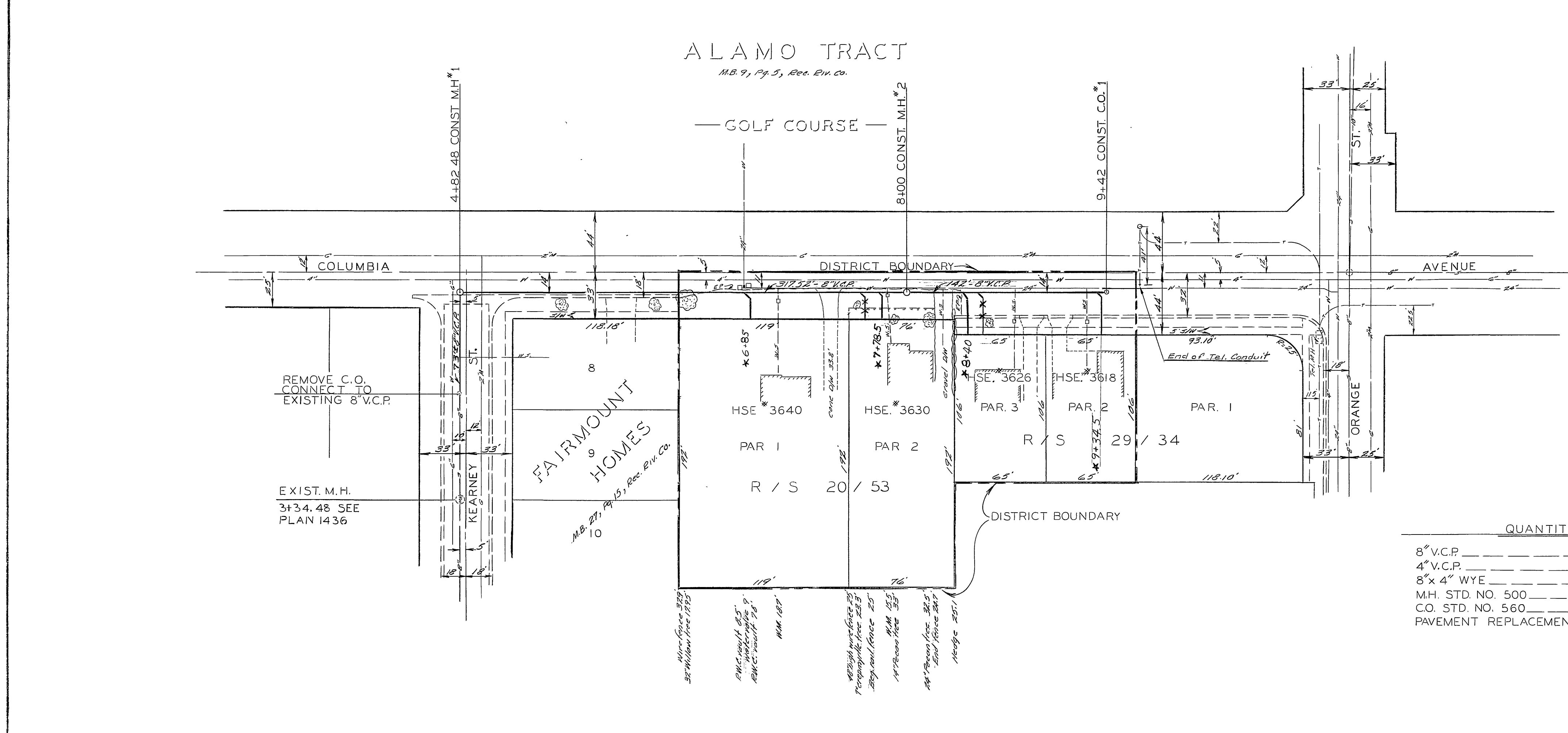


B.M. ELEV. 813.99 - S&L IN S.E.
 CB. RET. COLUMBIA & KEARNEY
 FB. S-4 / 74-76
 SCALE HOR. 1"=50'
 VERT. 1"=5'

PROFILE	
NO.	DATE
BY	
DATE	



SCALE 1"=50'

- NOTES
- 1- CONSTRUCT MANHOLES AS PER STD. DWG. NO. 500.
 - 2- CONSTRUCT CLEANOUT AS PER STD. DWG. NO. 560.
 - 3- SEWER LATERALS TO BE LOCATED IN THE FIELD.
 - 4- CONTRACTOR TO UNCOVER SEWER AT EXISTING C.O. SO CITY CAN VERIFY FLOW LINE BEFORE CUT SHEET IS ISSUED.

QUANTITIES

8" V.C.P.	533 LF
4" V.C.P.	98 LF
8" x 4" WYE	4 EA
M.H. STD. NO. 500	2 EA
C.O. STD. NO. 560	1 EA
PAVEMENT REPLACEMENT	1,111 SF

REVISIONS		CITY OF RIVERSIDE, CALIFORNIA DEPARTMENT OF PUBLIC WORKS	
MARK	DATE	DESCRIPTION	
▲	1-6-64	Revised Grade	
		COLUMBIA AVENUE SANITARY SEWER DISTRICT	
		BET. KEARNEY ST. & ORANGE ST.	
DESIGNED BY	SUBMITTED BY	APPROVED BY	PROJ. NO. 6043
DRAWN BY Rom.	PARK DEPT.	TRAFFIC DIV.	S-425
CHECKED BY	RECOMMENDED BY	DATE 8-20-63	SHEET 1 OF 1

PLAN	
NO.	DATE
BY	
DATE	

* As built 5/7/64 B.E.