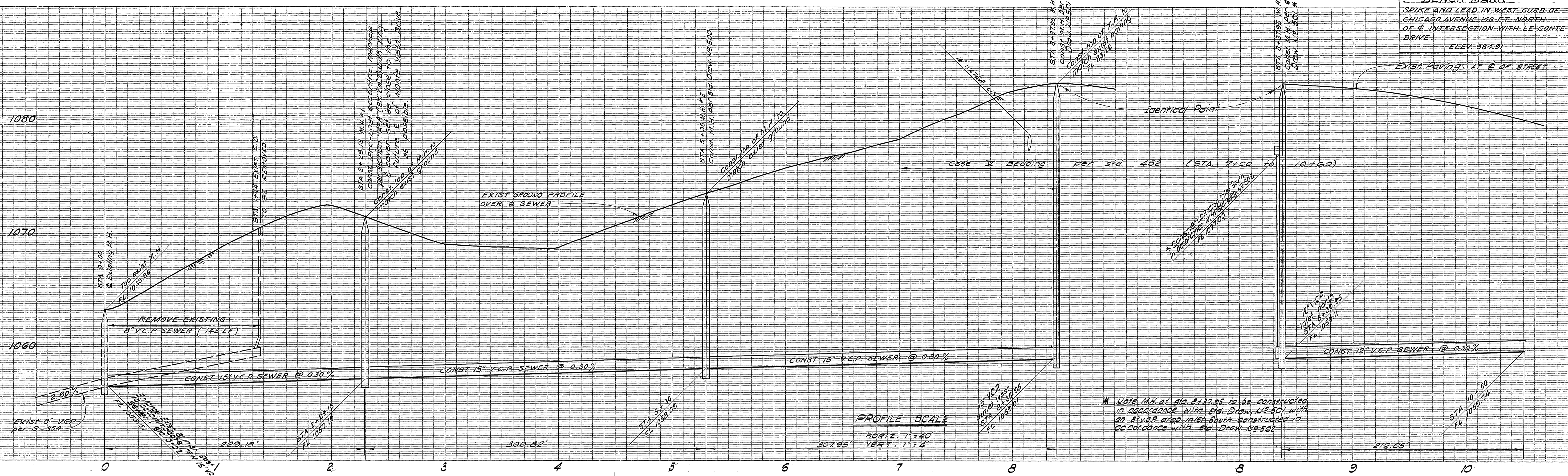
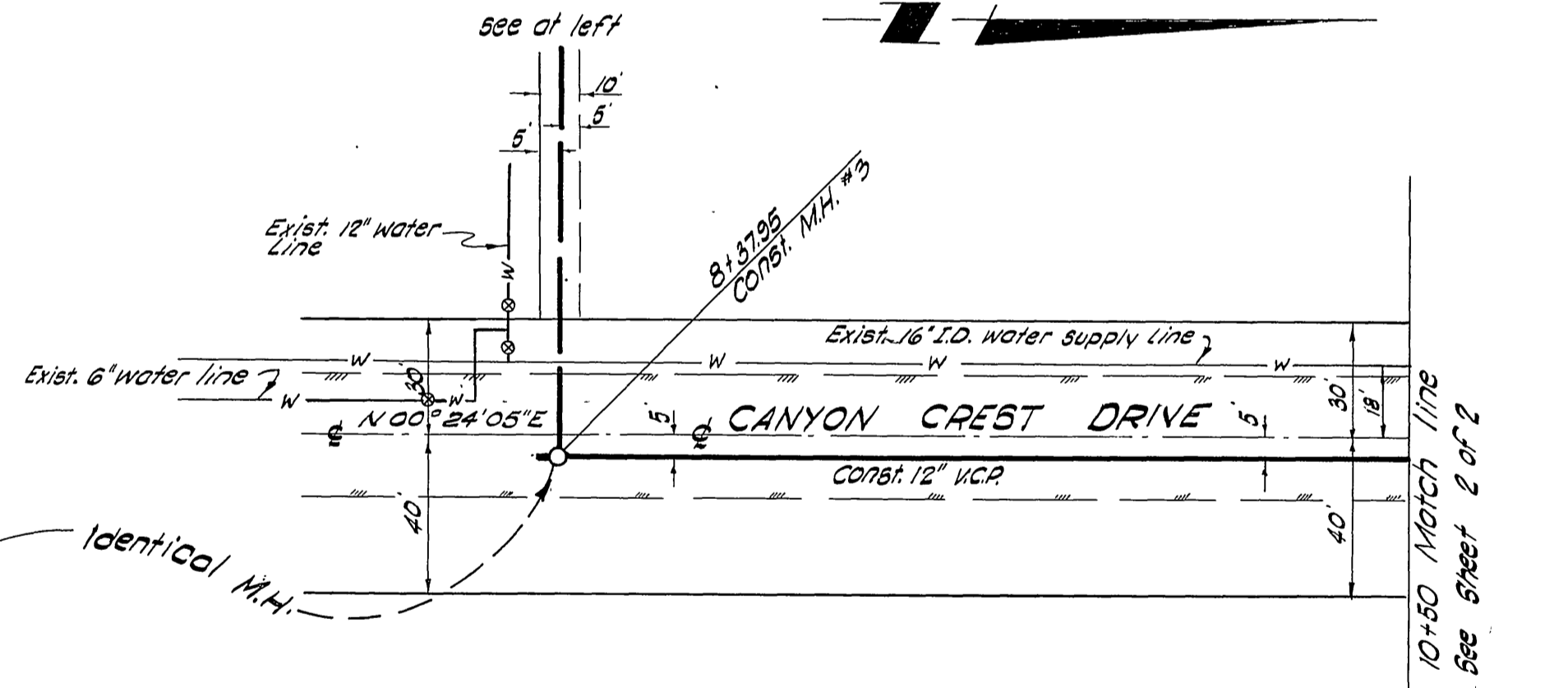
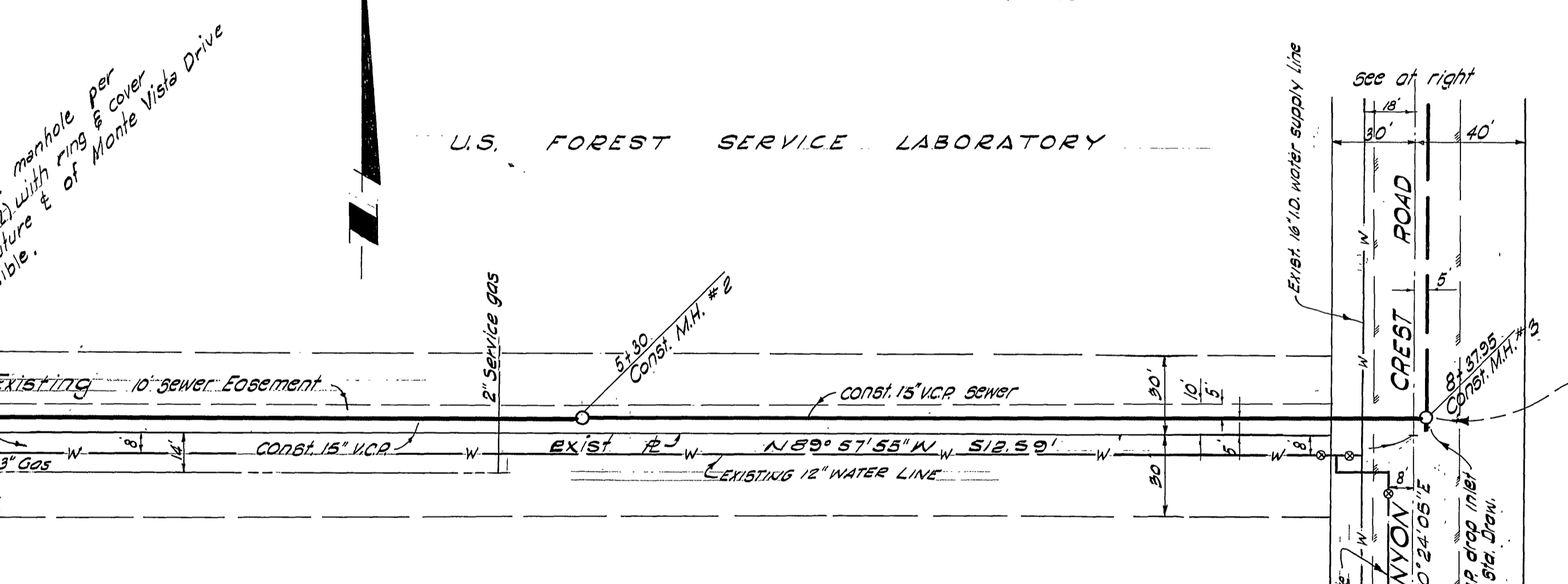
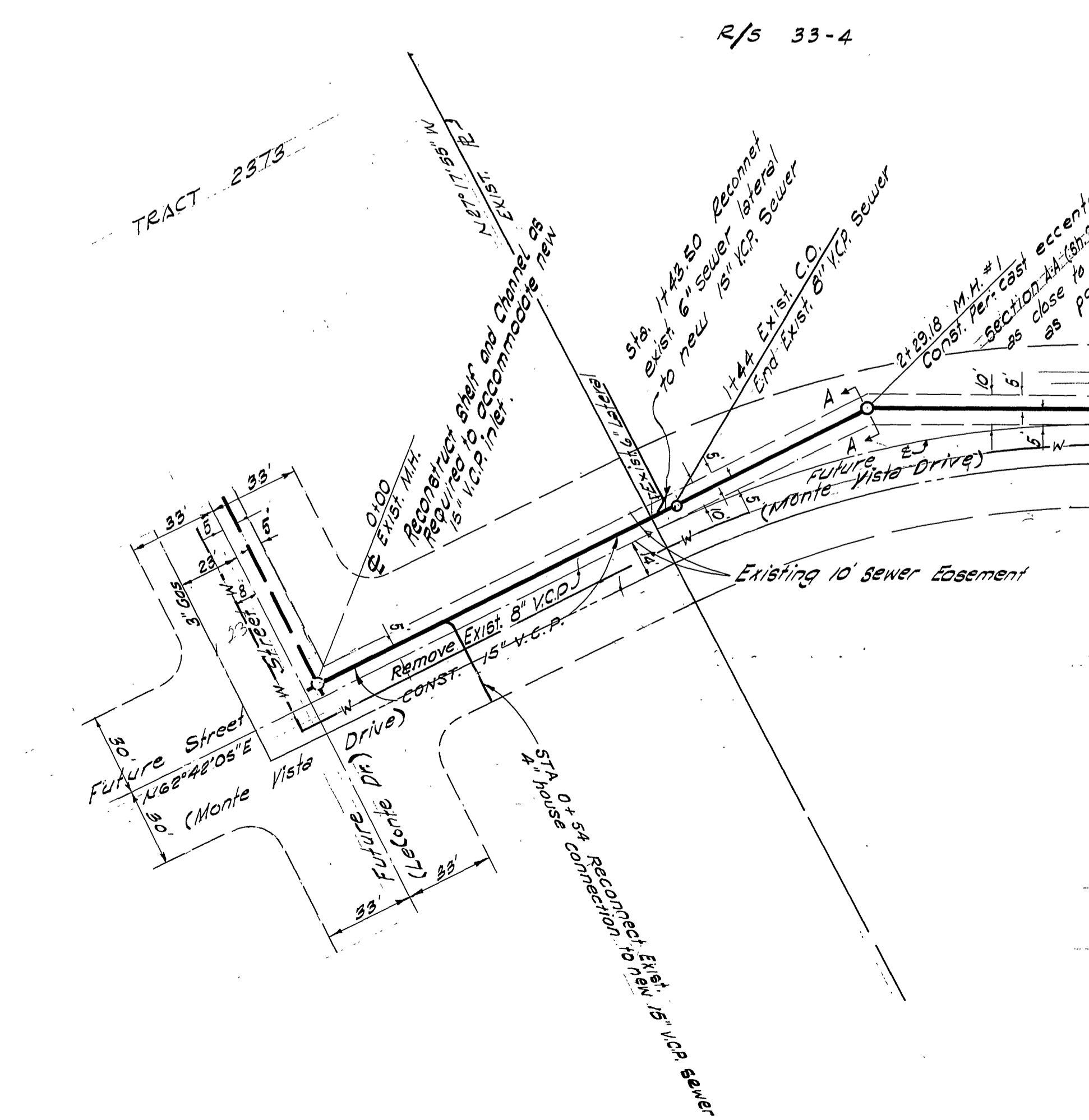


BENCH MARK
 SPIKE AND LEAD IN WEST CURB OF
 CHICAGO AVENUE 100 FT. NORTH
 OF INTERSECTION WITH LE CONTE
 DRIVE
 ELEV. 984.91



PROFILE SCALE
 HORIZ. 1" = 40'
 VERT. 1" = 4'

PLAN SCALE
 1" = 40'



GENERAL NOTES

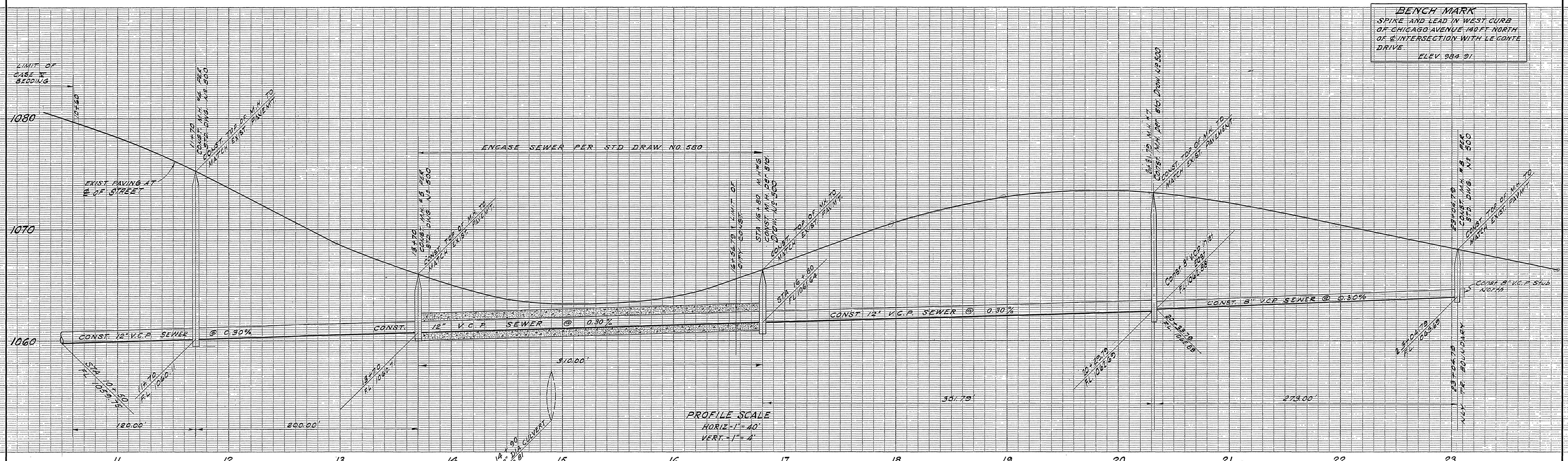
- Construction shall be in accordance with the City of Riverside, Department of Public Works, Standard Specifications N° 461 and Standard Drawings.
- Location of wyes and laterals to be determined in the field.
- All stubs and laterals to be constructed in accordance with Standard Drawing N° 362. Stubs shall be plugged and capped.
- Pipe shall be bedded, Case II, Standard Drawing N° 452. Except as noted on the plan.
- It shall be the responsibility of the contractor to clear the right of way in accordance with the provisions of the law as it affects each utility including irrigation lines and appurtenances and at no cost to the City.
- Joints in vitrified clay pipe sewers shall conform to ASTM Standard C-425-60T or the latest revision thereof.
- House laterals shall be constructed at right angles to the sewer main, unless noted otherwise on the plan. Stationing of the house laterals shall be the station of the wye in all cases.

QUANTITIES

Const. 12" V.C.P. sewer (# M.H. to # M.H.)	1193.84	L.F.
A.C. Pavement Removal (Length of Trench)	1487	L.F.
Encase 12" V.C.P. sewer	305	L.F.
Remove Exist. 8" V.C.P. sewer	144	L.F.
Reconnect Exist. Sewer Laterals to New 15" V.C.P. Sewer	2	Each
Const. 8" V.C.P. Sewer (# M.H. to # M.H.)	273.00	L.F.
Const. 15" V.C.P. Sewer (# M.H. to # M.H.)	837.95	L.F.
Remove exist. c.o.	1	Each
Drop Manholes	1	Each
Manholes per std. dug. n° 500	6	Each
Manholes Pre-Cast Eccentric	1	Each

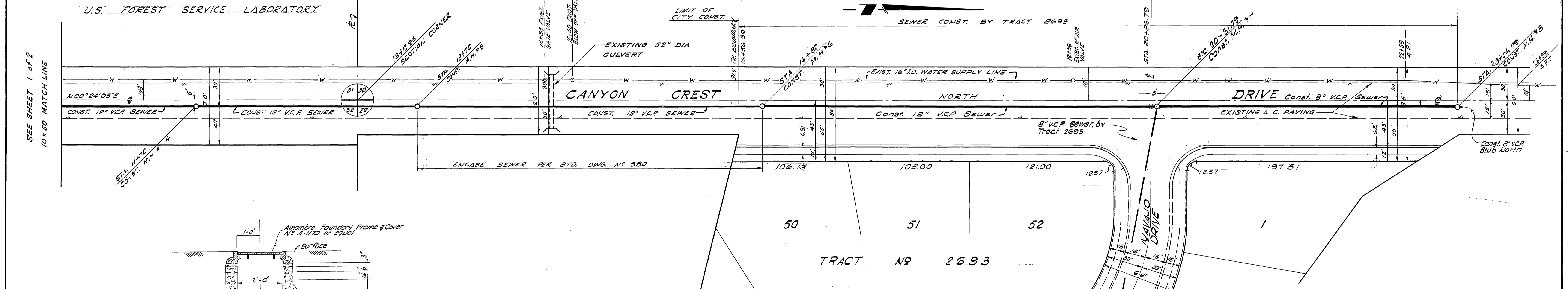
R.C.E. 9009		Hal Halldin Engineering Co.		DATE SEPT. 3, 1963	
REVISIONS			CITY OF RIVERSIDE, CALIFORNIA		
MARK	DATE	DESCRIPTION	DEPARTMENT OF PUBLIC WORKS		
			SANITARY SEWER		
			IN		
			CANYON CREST DRIVE		
			TRACT NO 2693		
DESIGNED BY	SUBMITTED BY		APPROVED BY	PROJ. NO.	
DRAWN BY	PARK DEPT. TRAFFIC DIV.		Director of Public Wks	S 431	
CHECKED BY	RECOMMENDED BY		DATE	SHEET 1 OF 2	
	ASST. CITY ENGR.		10/28/63		

BENCH MARK
SPIKE AND LEAD IN WEST CURB OF CHICAGO AVENUE 140 FT NORTH OF INTERSECTION WITH LE CONTE DRIVE.
ELEV. 984.91

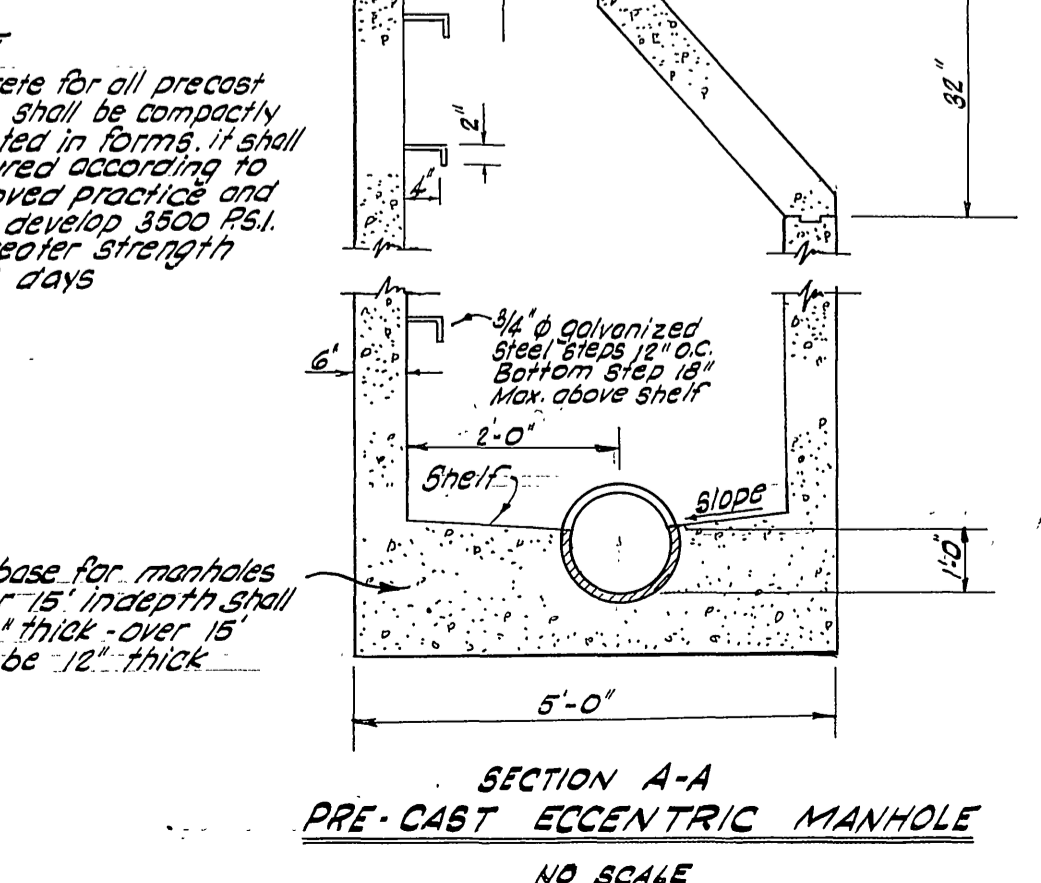


PROFILE SCALE
HORIZ. - 1" = 40'
VERT. - 1" = 4'

PLAN SCALE
1" = 40'



SEE SHEET 1 OF 2
10x50 MATCH LINE



NOTE
Concrete for all precast units shall be compactly vibrated in forms. It shall be cured according to approved practice and shall develop 3500 PSI or greater strength in 28 days.

The base for manholes under 15' depth shall be 9" thick - over 15' shall be 12" thick.

HAL HALLDIN ENGINEERING CO.			
R.C.E. 9009	<i>Halldin</i>	DATE	Sept. 3, 1963
REVISIONS		CITY OF RIVERSIDE, CALIFORNIA	
MARK	DATE	DESCRIPTION	DEPARTMENT OF PUBLIC WORKS
			SANITARY SEWER
			IN
			CANYON CREST DRIVE
			TRACT NO. 2693
DESIGNED BY	SUBMITTED BY	APPROVED BY	PROJ. NO.
DRAWN BY	PARK DEPT.	TRAFFIC DIV.	5 431
CHECKED BY	RECOMMENDED BY	ASST. CITY ENGINEER	DATE 10/28/63
			SHEET 2 OF 2