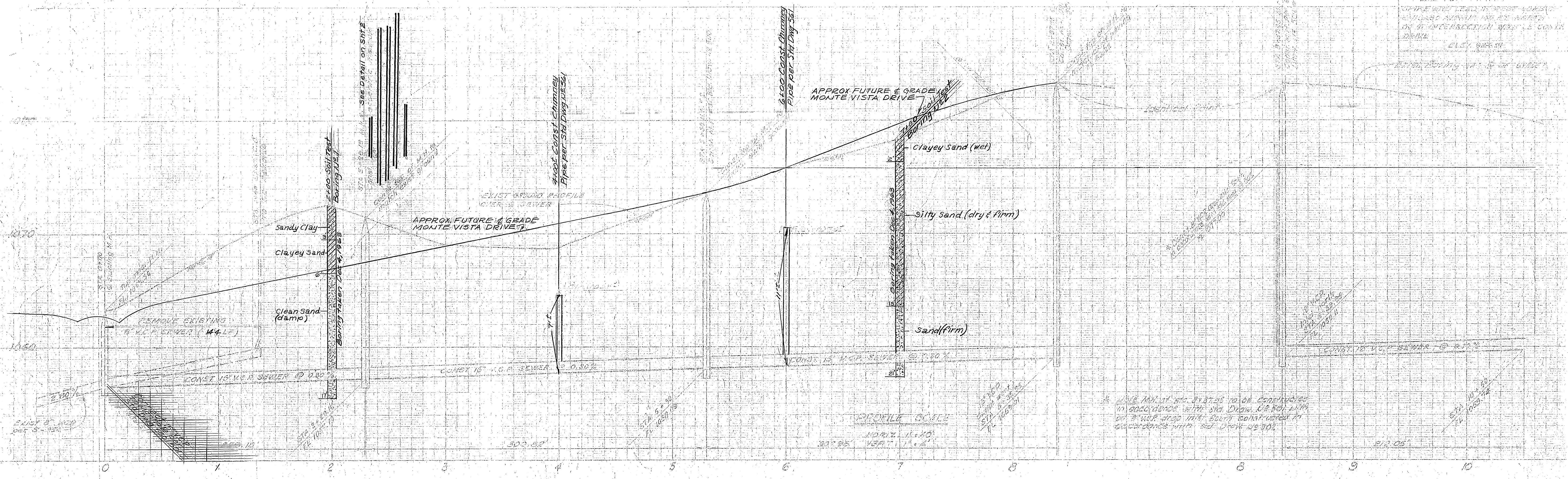
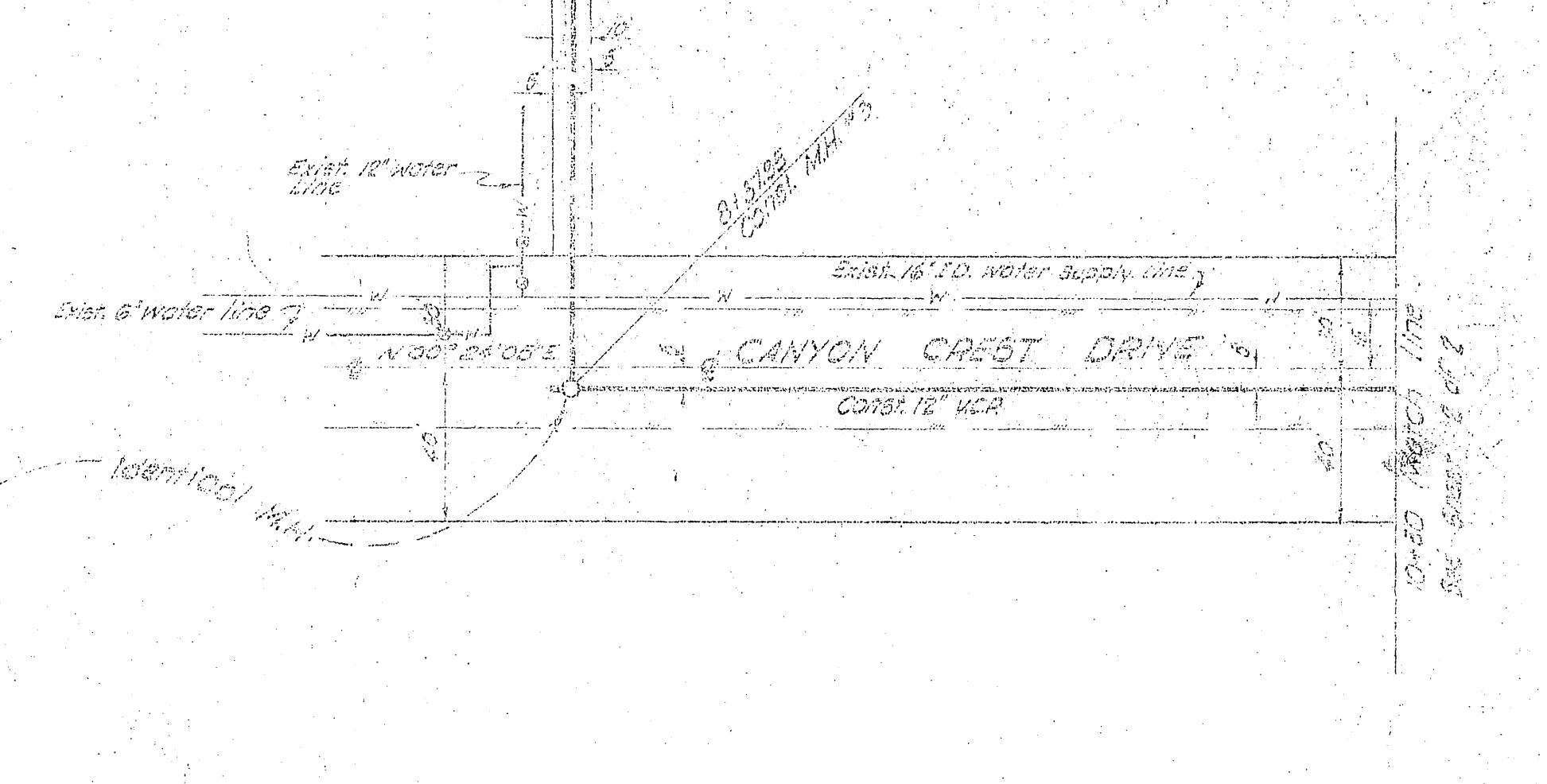
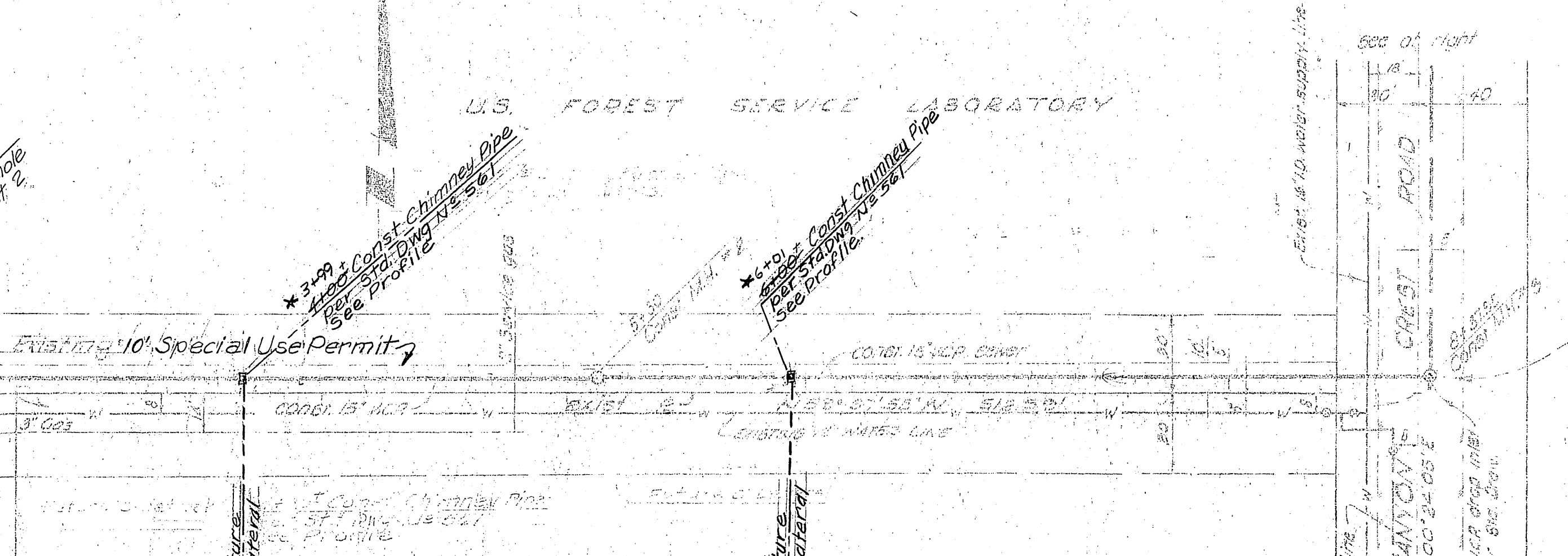
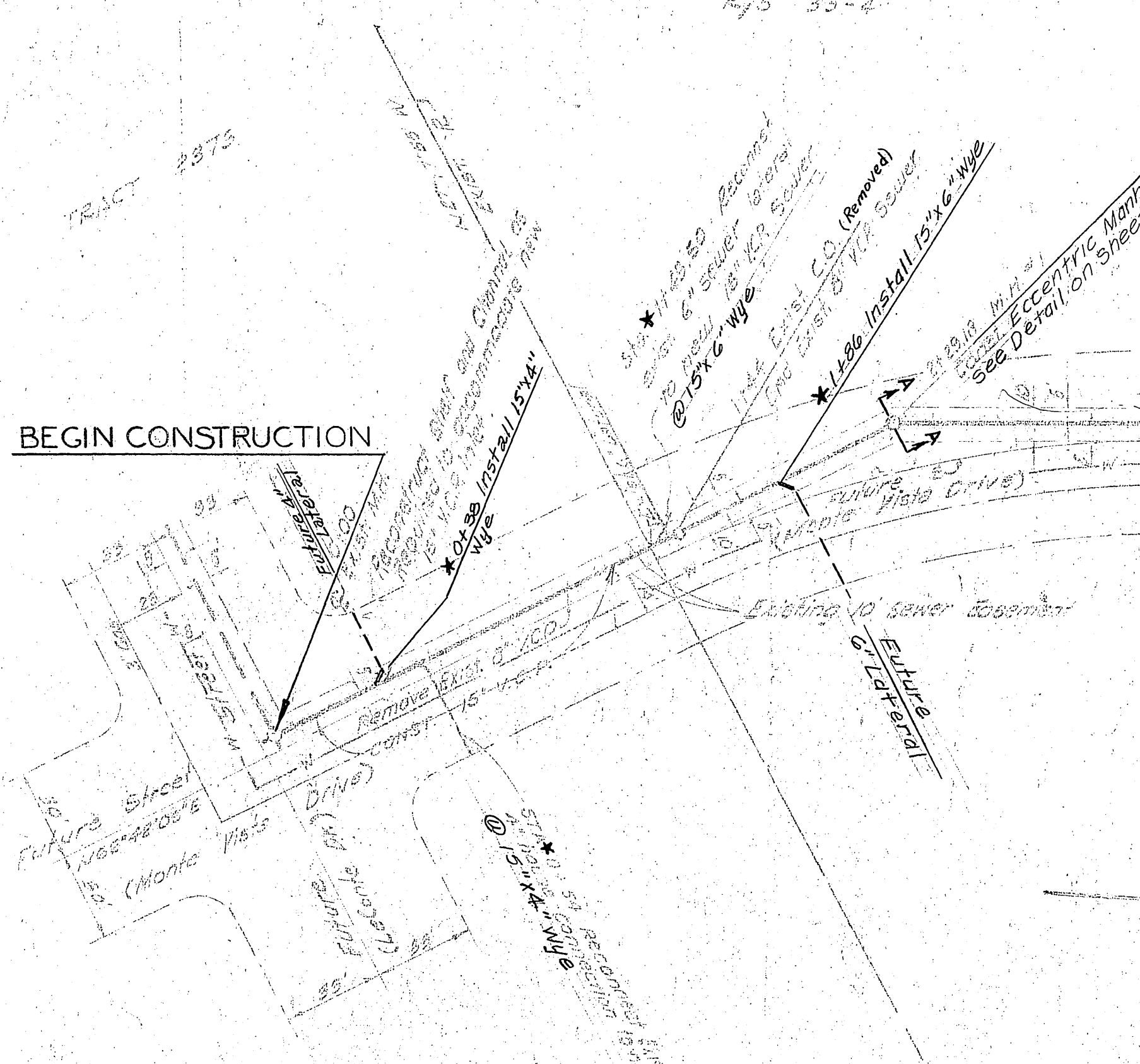


BENCH MARK
 TOP OF WIRE LEAD IN MOUNTAIN SIDE
 1074.80' ABOVE SEA LEVEL
 ON INTERSECTION WITH 1/2" CONCRETE
 DRIVE
 CITY MARK



PLAN SCALE
 1" = 40'

R/S 33-4



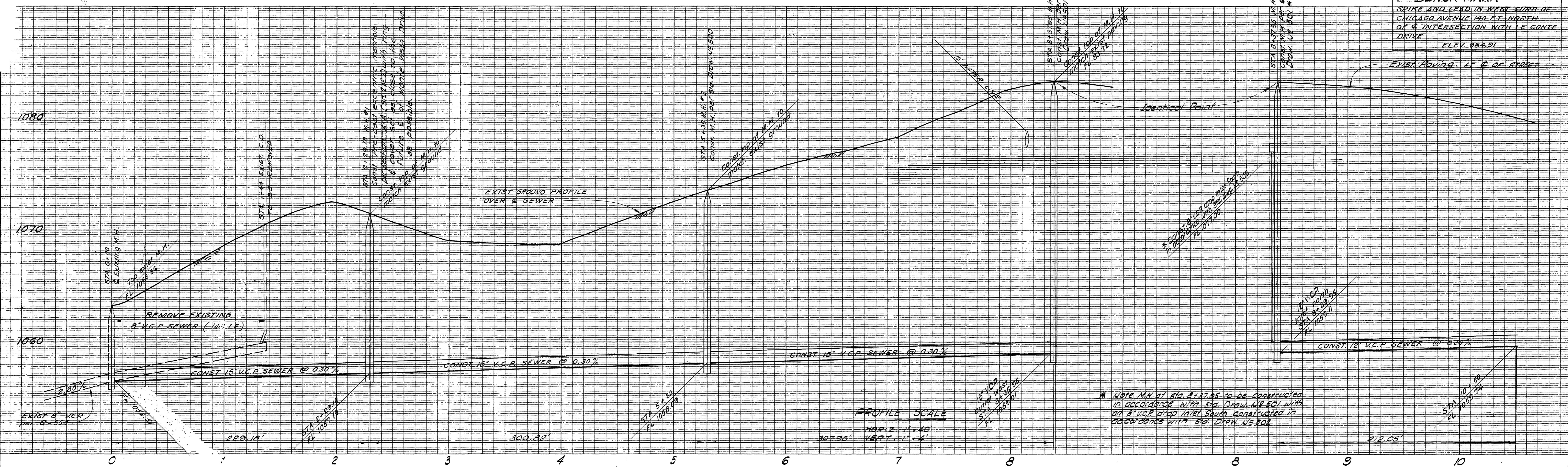
- GENERAL NOTES**
- Construction shall be in accordance with the City of Riverside, Department of Public Works, Standard Specifications No. 461 and Standard Drawings.
 - All wyes to be installed shall be in accordance with Standard Drawing No. 362. Slides shall be plugged and sealed.
 - Pipe shall be bedded, Class II, Standard Drawing No. 462, except as noted on the plan.
 - It shall be the responsibility of the contractor to clear the right of way in accordance with the provisions of the law as it affects each utility including location lines and easements and at no extra cost to the City.
 - Wyes in finished clay pipe sewers shall conform to ASTM Standard C-425-GOT or the latest revision thereof.

QUANTITIES

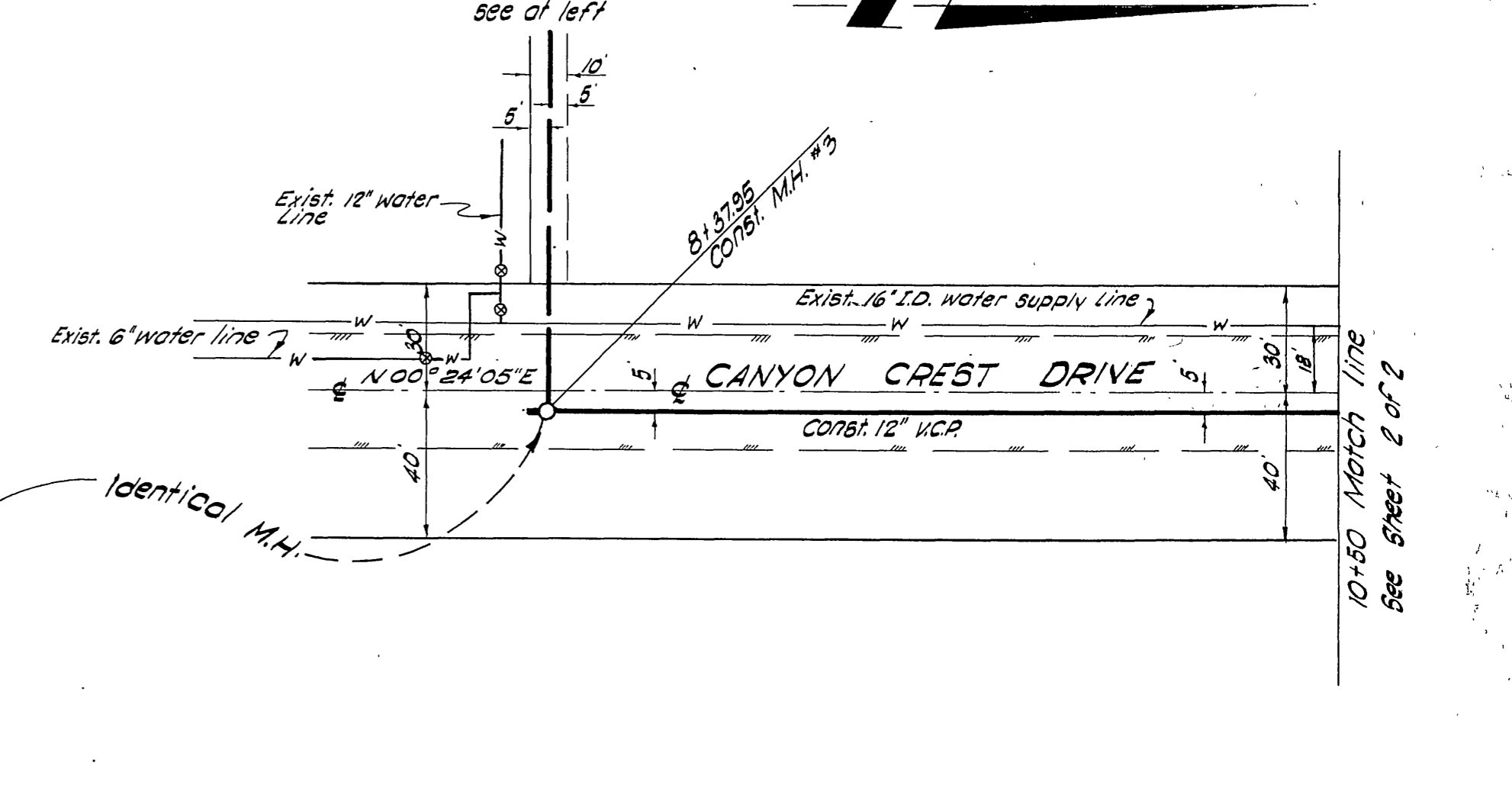
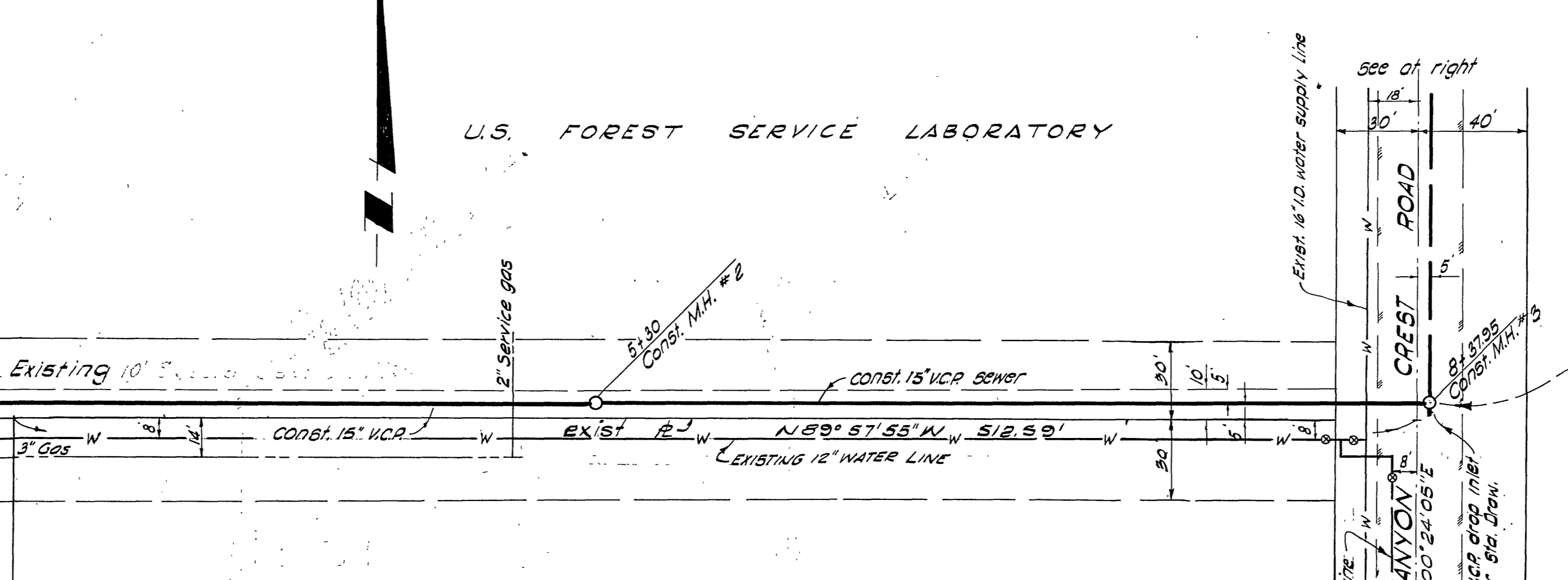
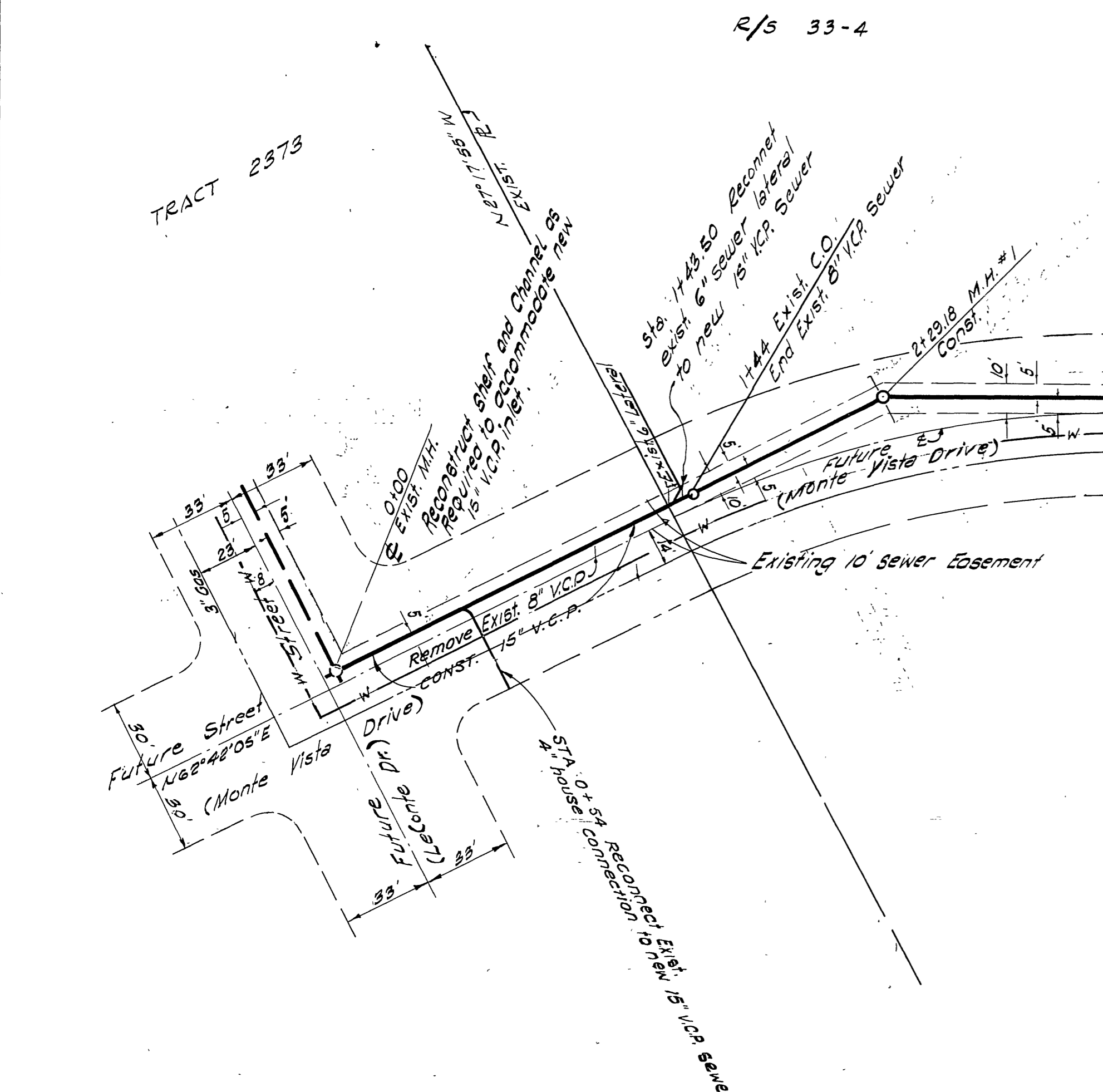
1. Remove existing 8" V.C.P.	144 L.F.
2. Const. 12" V.C.P.	819 L.F.
3. Encase 12" V.C.P.	200 L.F.
4. Const. 15" V.C.P.	838 L.F.
5. Const. Eccentric Manhole	1 Ea.
6. Const. Deep Drop Manhole, Std. 501/502	1 Ea.
7. Const. Manhole, Std. 500/Std. 500 Modified	3 Ea.
8. Reshape Manhole Bottom	1 Ea.
9. Asphalt Concrete Replacement	2727 S.F.
10. Seal Coat	16,760 S.F.
11. Const. Chimney Pipe, Std. 561	18 L.F.
12. Install 15" x 4" Wye	2 Ea.
13. Install 15" x 6" Wye	2 Ea.

HAL HALLIDIN ENGINEERING CO.
 R.C.E. 9009 *Hal Hallidin* DATE SEP 15 1968
 CITY OF RIVERSIDE, CALIFORNIA
 DEPARTMENT OF PUBLIC WORKS
**TRACT 2693
 SEWER EXTENSION
 IN MONTE VISTA DRIVE
 AND
 CANYON CREST DRIVE**
 5051
 S-431-A

BENCH MARK
SPIKE AND LEAD IN WEST CURB OF CHICAGO AVENUE 140 FT NORTH OF INTERSECTION WITH LE CONTE DRIVE
ELEV. 984.21



PLAN SCALE
1" = 40'



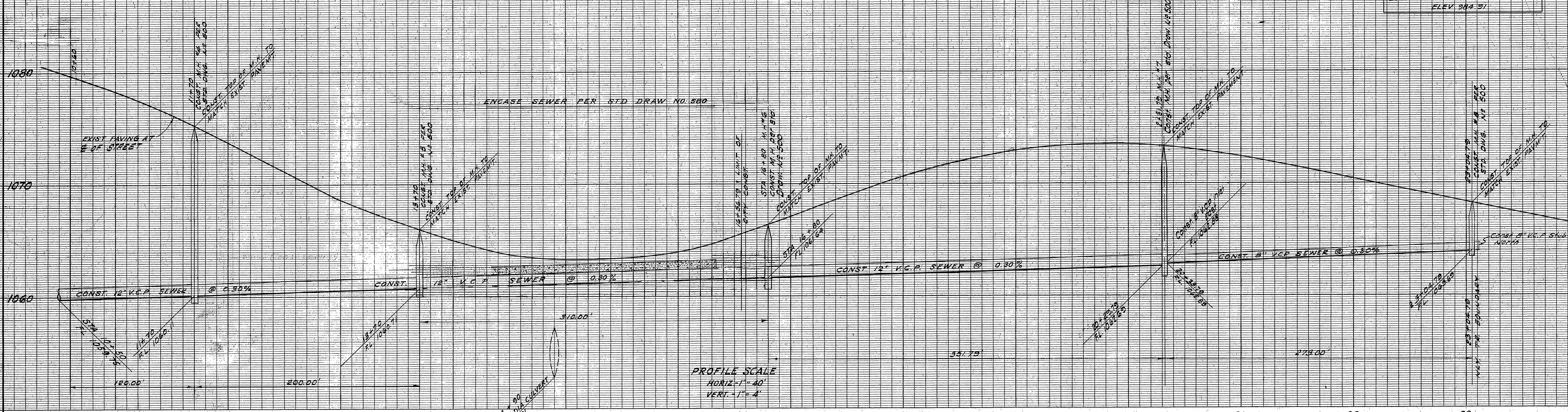
GENERAL NOTES

- Construction shall be in accordance with the City of Riverside, Department of Public Works, Standard Specifications N^o. 461 and Standard Drawings.
- Manholes shall be constructed in accordance with Standard Drawing N^o. 562. Stubs shall be plugged and capped. Pipe shall be bedded, Case II, Standard Drawing N^o. 452. Except as noted on the plan.
- It shall be the responsibility of the contractor to clear the right of way in accordance with the provisions of the law as it affects each utility including irrigation lines and appurtenances and all joints in vitrified clay pipe sewers shall conform to ASTM Standard C-425-60T or the latest revision thereof.

QUANTITIES

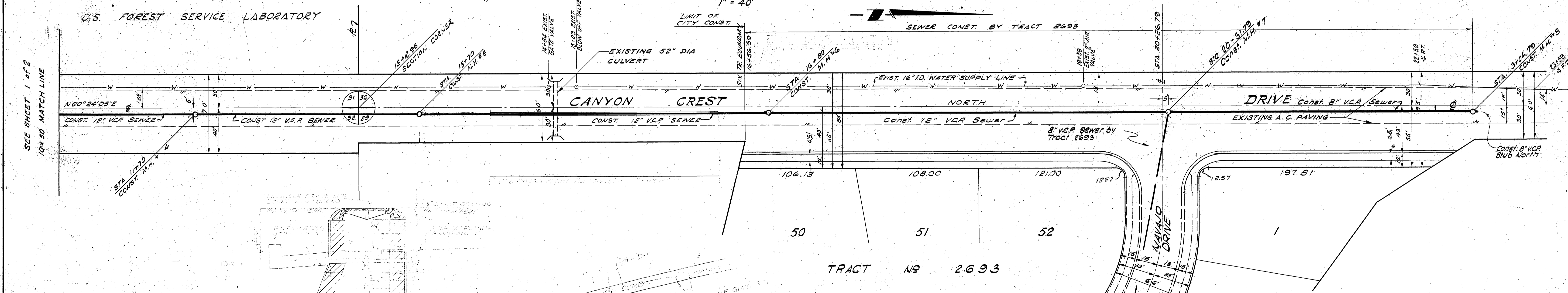
HAL HALLDIN ENGINEERING CO. R.C.E. 9009 <i>Halldin</i> DATE SEPT. 3, 1963			
REVISIONS MARK DATE DESCRIPTION		CITY OF RIVERSIDE, CALIFORNIA DEPARTMENT OF PUBLIC WORKS	
DESIGNED BY	SUBMITTED BY	APPROVED BY	PROJ. NO.
DRAWN BY	PARK DEPT. TRAFFIC DIV.	<i>W. S. ...</i>	
CHECKED BY	RECOMMENDED BY	DATE 10/28/63	SHEET 1 OF 2
	ASST. CITY ENGR.		

BENCH MARK
 SPIKE AND LEAD IN WEST CURB
 OF CHICAGO AVENUE 140 FT NORTH
 OF INTERSECTION WITH LE CONTE
 DRIVE
 ELEV. 284.91

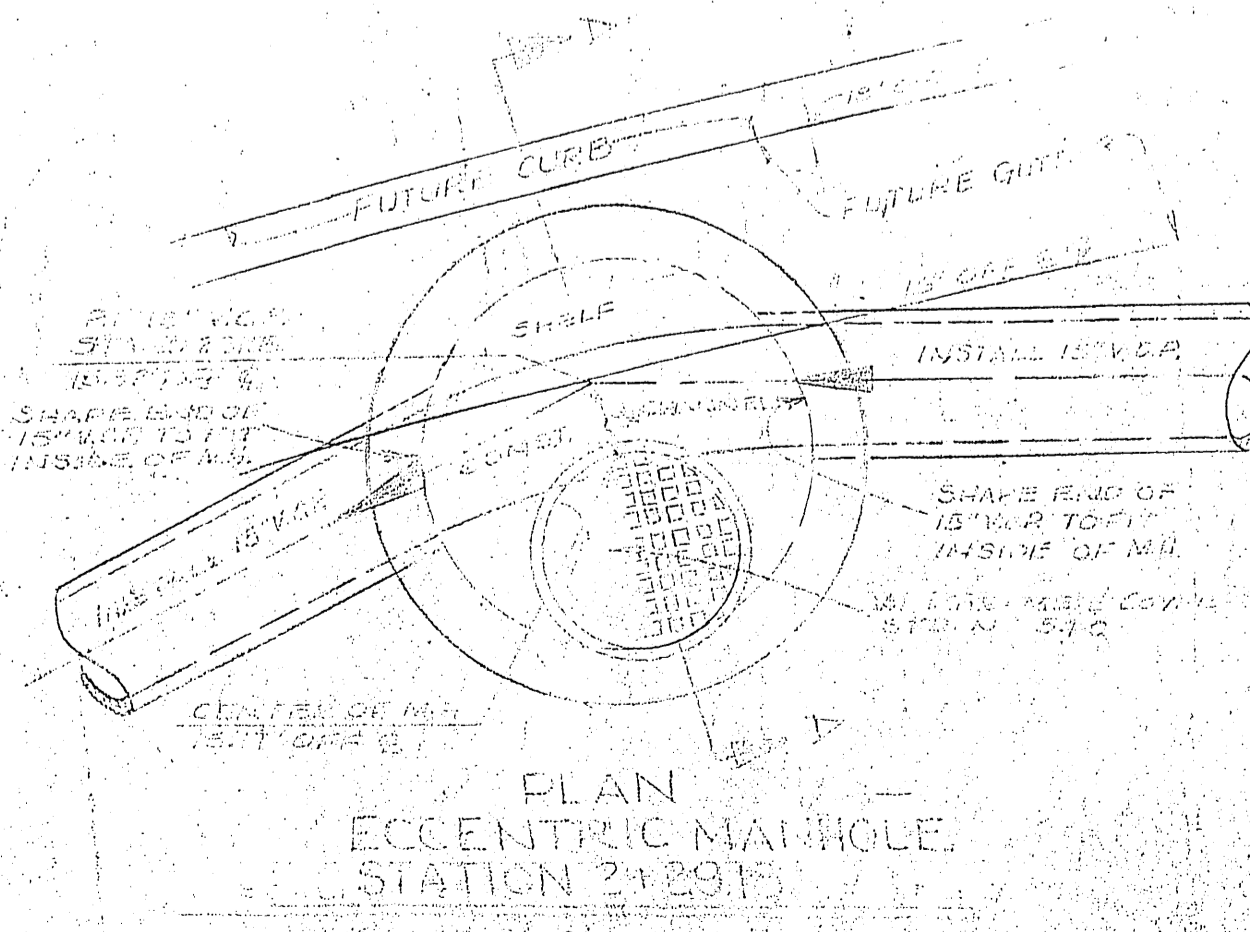
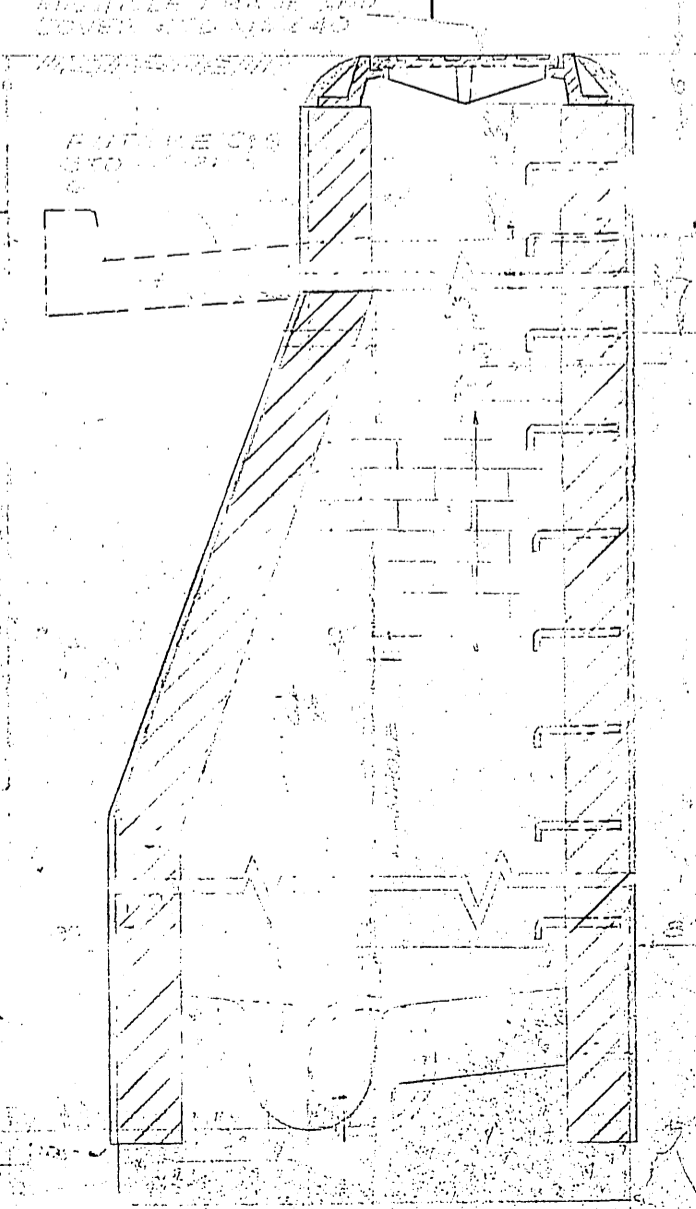


PROFILE SCALE
 HORIZ. 1" = 40'
 VERT. 1" = 4'

PLAN SCALE
 1" = 40'



SEE SHEET 1 OF 2
 10 X 50 MATCH LINE



PLAN
 ECCENTRIC MANHOLE
 STATION 21291

NOTE: CONTRACTOR SHALL CONSTRUCT THE MANHOLE PER THE SPECIFICATIONS AND SHALL BE RESPONSIBLE FOR THE PROTECTION OF ALL UTILITIES.

R.C.E. 9009		HAL HALLDIN ENGINEERING CO.		DATE Sept 3, 1963	
DESIGNED BY		SUBMITTED BY		APPROVED BY	
DRAWN BY		PARK DEPT. TRAFFIC DIV.		DIRECTOR OF PUBLIC WORKS	
CHECKED BY		RECOMMENDED BY		DATE	
		ASST. CITY ENGINEER		09/28/63	
PROJECT NO.		S 131		SHEET 2 OF 2	
CITY OF RIVERSIDE, CALIFORNIA		DEPARTMENT OF PUBLIC WORKS		TRACT NO. 2693 SEWER EXTENSION MAYNARD DRIVE AND CANYON CREST DRIVE	