

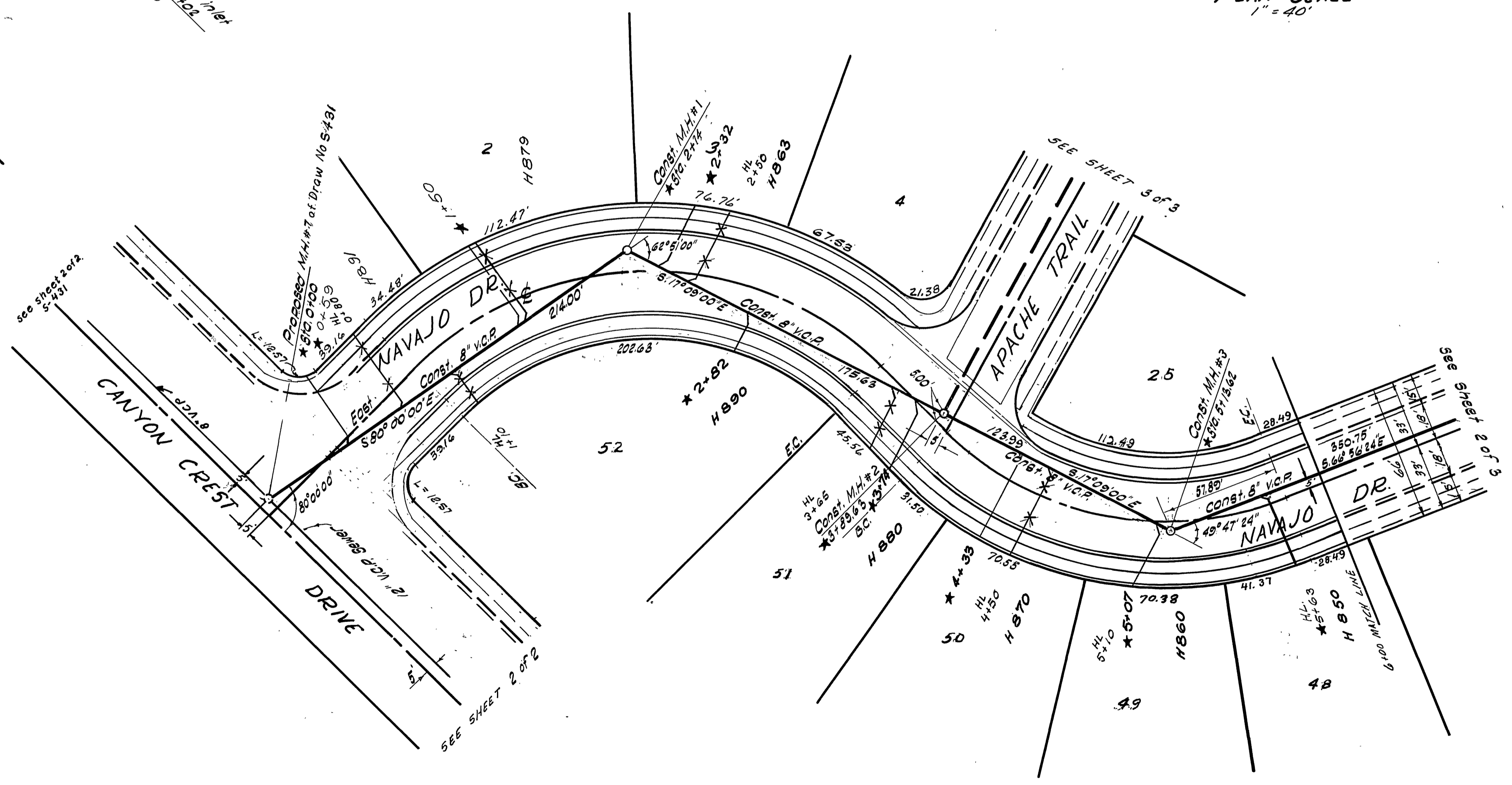
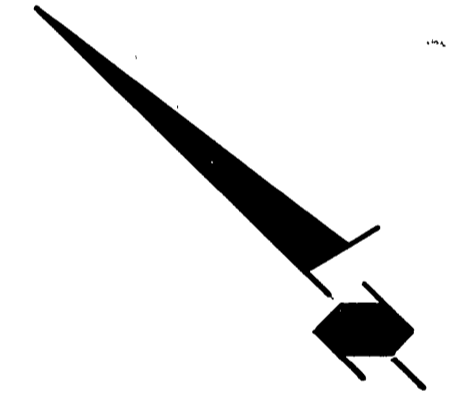
**BENCH MARK**  
 Spike and lead in West curb of  
 CHICAGO AVENUE 40ft North  
 of E Intersection with LE  
 CONTE DRIVE  
 ELEV. 984.91

**QUANTITIES**

8" VCP (2" M.H. to 2" M.H.)	0.624.69 L.F.
Manholes	10 EACH
4" VCP House Laterals	1.766 L.F.

**PROFILE SCALE**  
 HORIZ-1"=40'  
 VERT-1"=4'

**PLAN SCALE**  
 1"=40'

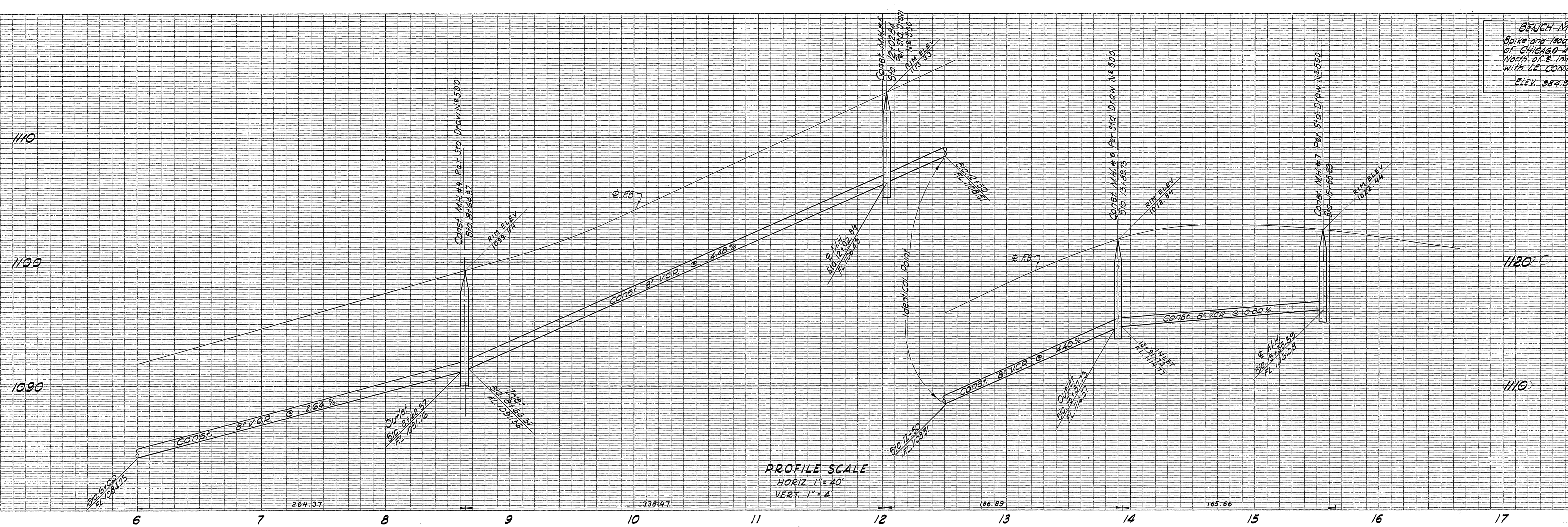


- GENERAL NOTES** Sewer Plans
- Construction shall be in accordance with the City of Riverside, Department of Public Works, Standard Specifications No. 461 and Standard Drawings.
  - Location of wyes and laterals to be determined in the field.
  - All stubs and laterals to be constructed in accordance with Standard Drawing No. 562. Stubs shall be plugged and capped.
  - Pipe shall be bedded, Case II, Standard Drawing No. 452, except as noted on plan.
  - It shall be the responsibility of the contractor to clear the right of way in accordance with the provisions of the law as it affects each utility including irrigation lines and appurtenances and at no cost to the City.
  - Joints in vitrified clay pipe sewers shall conform to ASTM Standard C-425-60T, or the latest revision thereof.
  - House laterals shall be constructed at right angles to the sewer main unless noted otherwise on the plan. Stationing of the house laterals shall be the station of the wye in all cases.

HAL HALLDIN ENGINEERING CO.		R.C.E. 9009 <i>David A. Halldin</i>		DATE Sept. 3, 1963	
REVISIONS			CITY OF RIVERSIDE, CALIFORNIA		
MARK	DATE	DISCRIPTION			
		SANITARY SEWER IN NAVAJO DRIVE TRACT NO 2693			
DESIGNED BY	SUBMITTED BY	APPROVED BY	PROJ. NO.		
DRAWN BY	PARK DEPT TRAFFIC DIV	<i>Amantia</i>	S-432		
CHECKED BY	RECOMMENDED BY	DIRECTOR OF PUBLIC WKS	DATE 10/25/63		
	ASST. CITY ENGR.		SHEET 1 OF 3		

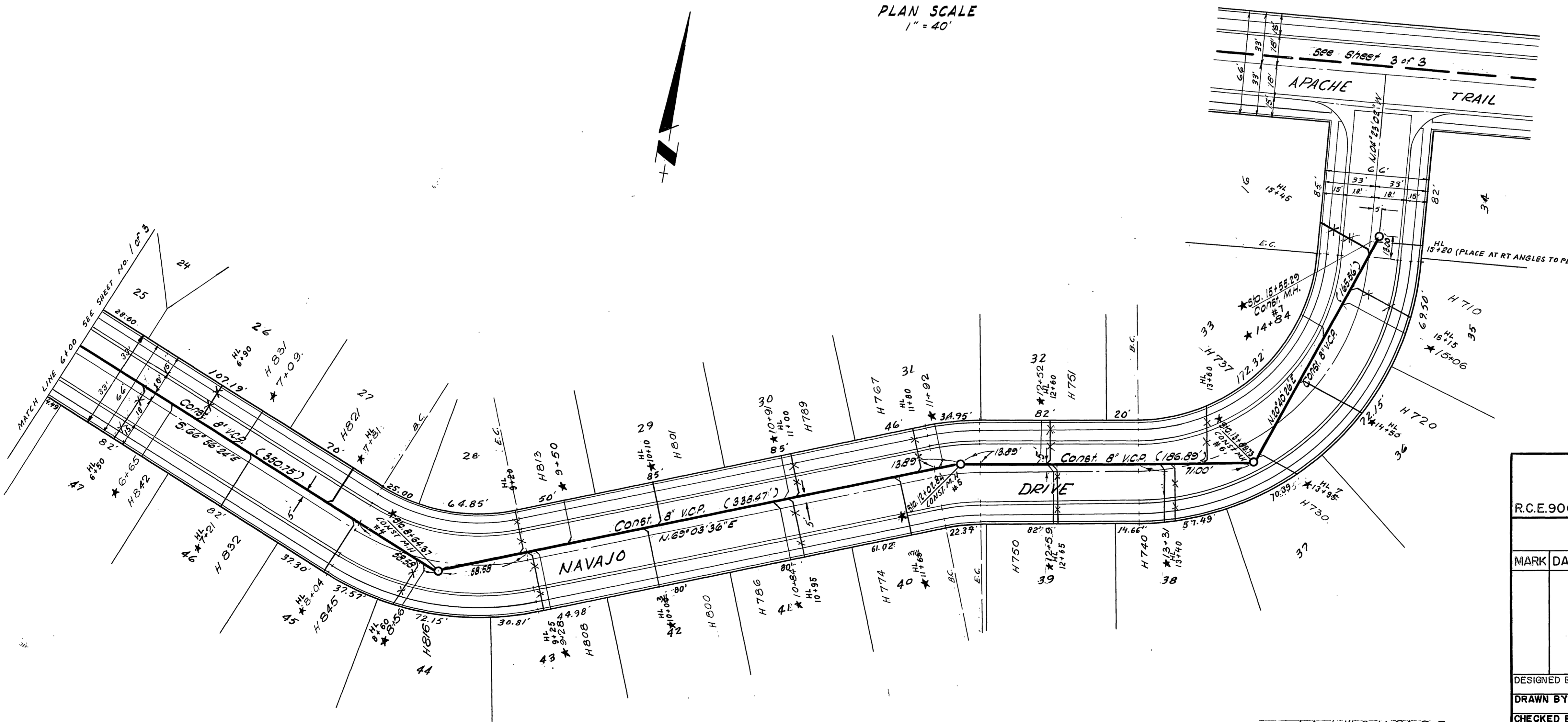
\* As built 2.14.64, G.S.

**BENCH-MARK**  
 Spike and lead in West curb  
 of CHICAGO Avenue 100 ft  
 North of E Intersection  
 with LE CONTE Drive  
 ELEV. 984.91



**PROFILE SCALE**  
 HORIZ. 1" = 40'  
 VERT. 1" = 4'

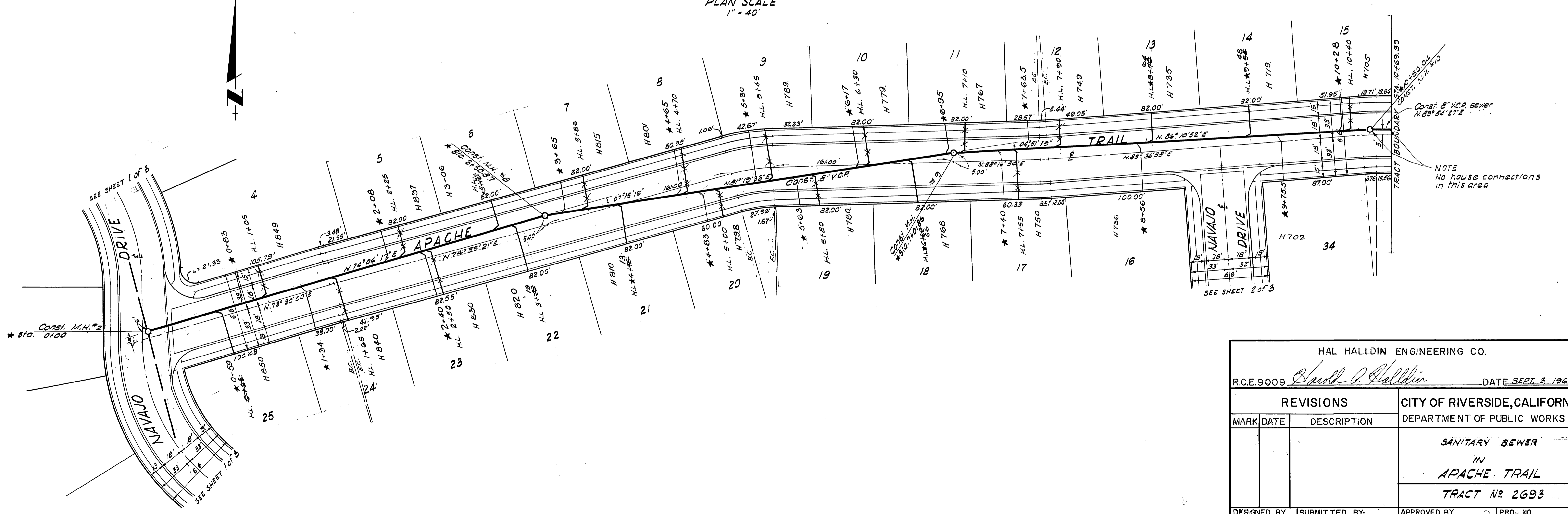
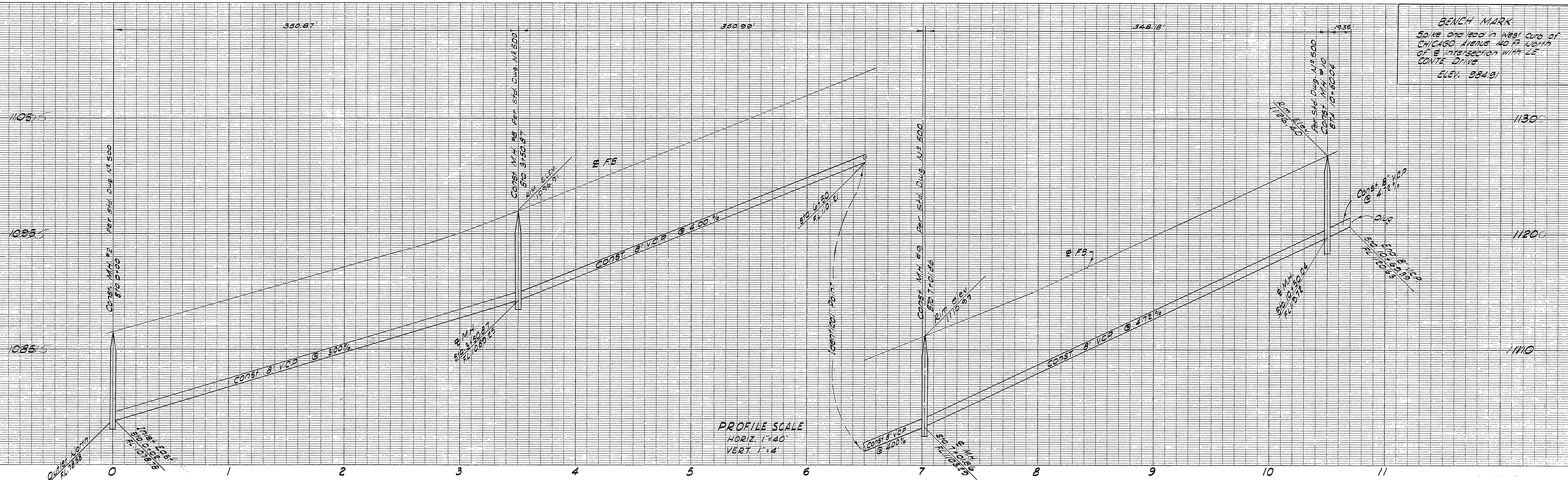
**PLAN SCALE**  
 1" = 40'



HAL HALLDIN ENGINEERING CO.			
R.C.E.9009		DATE Sept. 3, 1963	
<b>REVISIONS</b>		CITY OF RIVERSIDE, CALIFORNIA	
MARK	DATE	DESCRIPTION	DEPARTMENT OF PUBLIC WORKS
SANITARY SEWER IN NAVAJO DRIVE TRACT No 2693			
DESIGNED BY	SUBMITTED BY	APPROVED BY	PROJ. NO.
DRAWN BY	PARK DEPT TRAFFIC DIV	DIRECTOR OF PUBLIC WORKS	S 432
CHECKED BY	RECOMMENDED BY	DATE	SHEET 2 OF 3
	ASSISTANT CITY ENGR.	10/25/63	

\* As built 2.14.64 G.S.

**BENCH MARK**  
 Spike and lead in west curb of CHICAGO AVENUE 40.75' 100.17' of 8" water section with 22" CONCRETE DRIVE  
 ELEV. 234.91'



NOTE  
 No house connections  
 in this area

HAL HALLDIN ENGINEERING CO.			
R.C.E. 9009	Small O. Hallidin		DATE SEPT. 3, 1963
REVISIONS		CITY OF RIVERSIDE, CALIFORNIA	
MARK	DATE	DESCRIPTION	DEPARTMENT OF PUBLIC WORKS
		SANITARY SEWER IN APACHE TRAIL TRACT No 2693	
DESIGNED BY	SUBMITTED BY	APPROVED BY	PROJ. NO.
DRAWN BY	PARK DEPT TRAFFIC DIV.	DIRECTOR PUBLIC WKS	S 432
CHECKED BY	RECOMMENDED BY	DATE 10-28-63	SHEET 3 OF 3

\* As built 2.14.64 G.S.