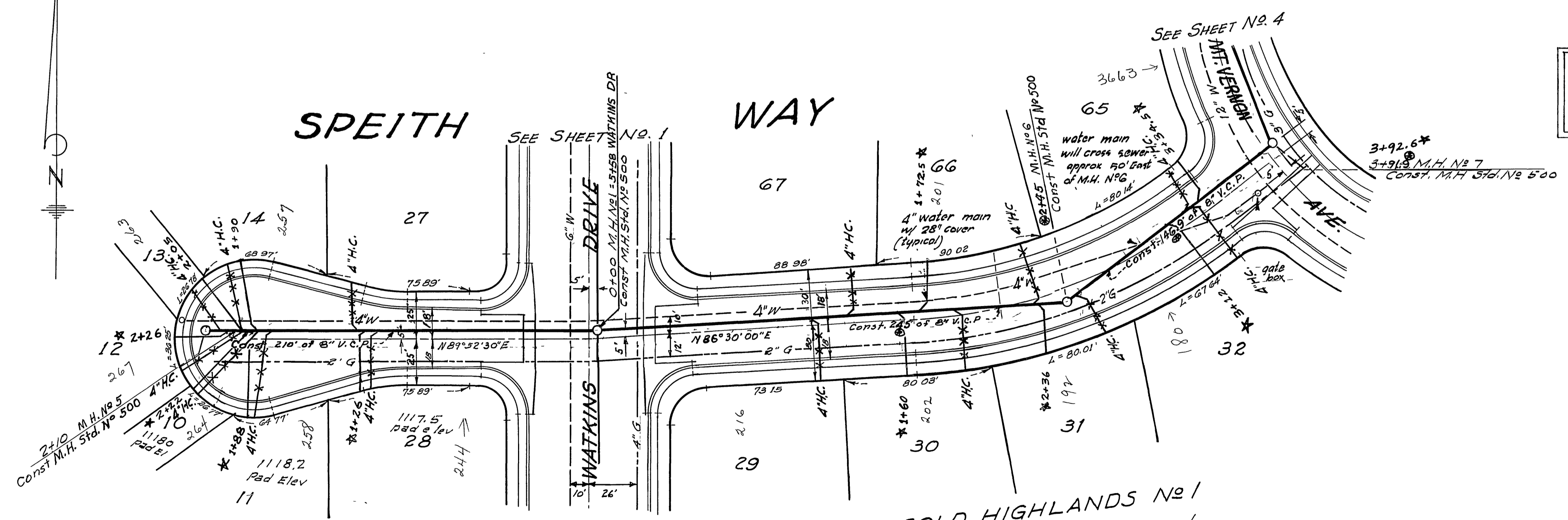


PROFILE
 SCALE: 1 in. = 40 ft. Horiz.
 1 in. = 4 ft. Vert.

PLAN
 SCALE 1 in. = 40 ft



CAUTION
 Exact Location & Depth of 6" Transite Water Line Unknown

NOTES:
 1 For General Notes see Sheet No. 1.

BENCH MARK: Chiseled mark on top of Fire Hydrant
 NE cor. Valencia & Big Springs Road
 Elev. = 1095.94 (per S-272)

McKee & CRAWLEY
 SURVEYORS AND ENGINEERS
 Riverside, California

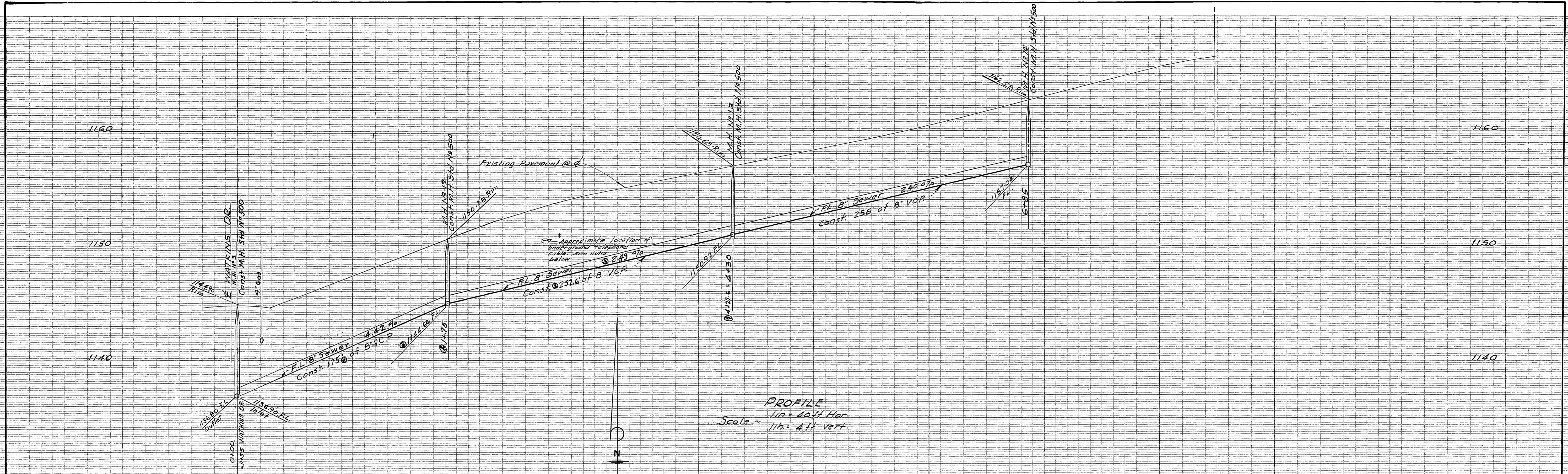
Approved: George O. Crawley, Field Bk. L22/1
 No. 5455, Date 8-16-63

REVISIONS			CITY OF RIVERSIDE, CALIFORNIA DEPARTMENT OF PUBLIC WORKS
MARK	DATE	DESCRIPTION	
	12-27-63	existing water lines per field data D.P.D. W.S. O. Crawley	SEWER PLAN & PROFILE SPEITH WAY WATKINS DR. SEWER No. 2. Sta. 2+10 W'y. to Mt. Vernon Ave.
⊕	1-15-64	M.H. No. 6 Moved to avoid water lateral. See M.B. 32 p. 80, Riverside Co. Records	
DESIGNED BY	SUBMITTED BY		APPROVED BY
DRAWN BY	PARK DEPT. TRAFFIC DIV.		PROJ. NO.
CHECKED BY	RECOMMENDED BY		DATE

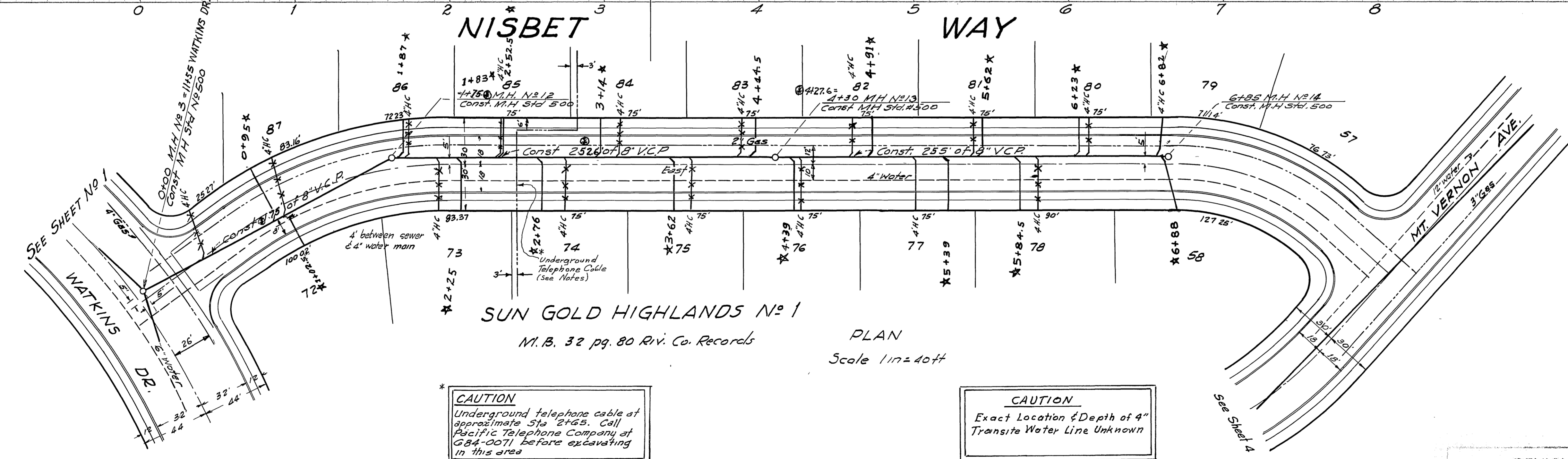
SUN GOLD HIGHLANDS No. 1
 M.B. 32 p. 80, Riverside Co. Records.

* As Built 4-21-64 DGE

SHEET 2 OF 4



PROFILE
 1 in = 40 ft Hor.
 1 in = 4 ft Vert.



SUN GOLD HIGHLANDS No. 1
 M.B. 32 pg. 80 Riv. Co. Records

PLAN
 Scale 1 in = 40 ft

CAUTION
 Underground telephone cable at approximate Sta 2+65. Call Pacific Telephone Company at 684-0071 before excavating in this area.

CAUTION
 Exact Location & Depth of 4" Transit Water Line Unknown

NOTES:
 1 For General Notes see Sheet No. 1.
 2 Underground Telephone Cable in Transit will be paid located by the Telephone Co. Notify them by phone 684-0071, 24 hrs before excavation.

BENCH MARK: Chiseled mark on top of Fire Hydrant N.E. cor. Valencia & Big Springs Road. Elev = 1095.94 (per S-272)

McKEE & CRAWLEY
 SURVEYORS AND ENGINEERS
 Riverside, California
 Approved: *George O. Crawley* Field Bk. 122/1
 R.E. No. 9155 Date 8-16-63

REVISIONS		
MARK	DATE	DESCRIPTION
*	11-18-63	Added Telephone Cable at Sta. 2+65. George O. Crawley
	12-27-63	Revised sewer line profile for field data. George O. Crawley
Ⓢ	1-15-64	M.H. No. 12 moved to avoid Water Lateral. George O. Crawley

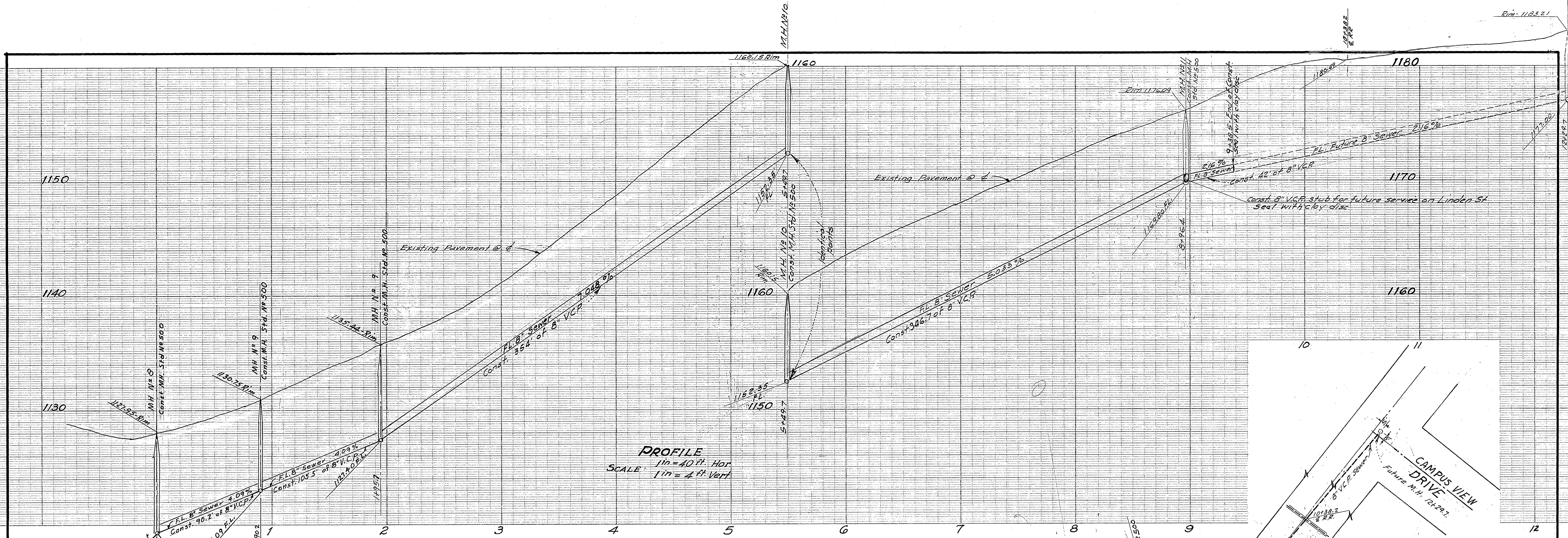
DESIGNED BY: *George O. Crawley*
 DRAWN BY: *Bob Wigg*
 CHECKED BY: *George O. Crawley*
 APPROVED BY: *George O. Crawley*
 DIRECTOR OF PUBLIC WORKS
 DATE: *Nov 6, 1963*

CITY OF RIVERSIDE CALIFORNIA
 DEPARTMENT OF PUBLIC WORKS

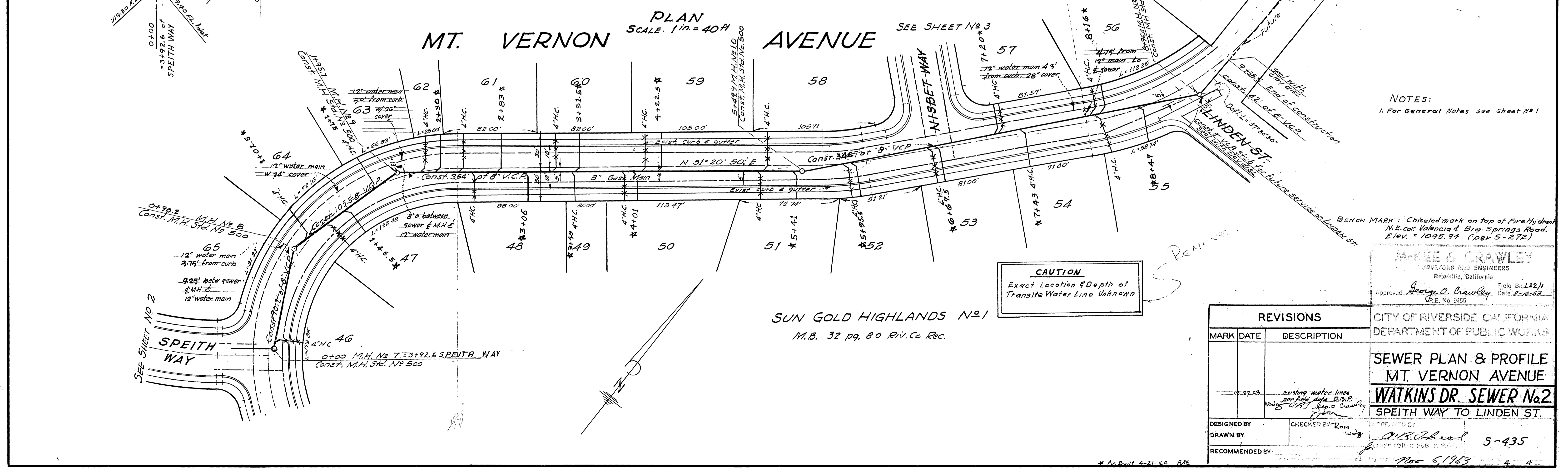
SEWER PLAN & PROFILE
NISBET WAY
WATKINS DR. SEWER No. 2.
 Sta. 0+00 to Sta 6+85

S-435

* As Built 4-21-64 BDE



PROFILE
 1" = 40' Hor.
 1" = 4' Vert.



PLAN
 SCALE: 1" = 40'

NOTES:
 1. For General Notes see Sheet No. 1

CAUTION
 Exact Location & Depth of
 Transient Water Line Unknown

BENCH MARK: Chiseled mark on top of Fire Hydrant
 N.E. cor. Valencia & Big Springs Road.
 Elev. = 1095.94 (per S-272)

MORSE & CRAWLEY
 SURVEYORS AND ENGINEERS
 Riverside, California
 Approved: *George O. Crawley* Date: 8-16-63
 U.E. No. 9455

REVISIONS		DESCRIPTION
MARK	DATE	
1	8-27-63	existing water lines per field data - B.S.P. W.D. See O. Crawley

DESIGNED BY: *[Signature]*
 DRAWN BY: *[Signature]*
 CHECKED BY: *[Signature]*
 RECOMMENDED BY: *[Signature]*

CITY OF RIVERSIDE CALIFORNIA
 DEPARTMENT OF PUBLIC WORKS

SEWER PLAN & PROFILE
MT. VERNON AVENUE
WATKINS DR. SEWER No. 2
 SPEITH WAY TO LINDEN ST.

APPROVED BY: *[Signature]*
 5-435
 Nov 6, 1963

* As Built 4-21-64 BVE