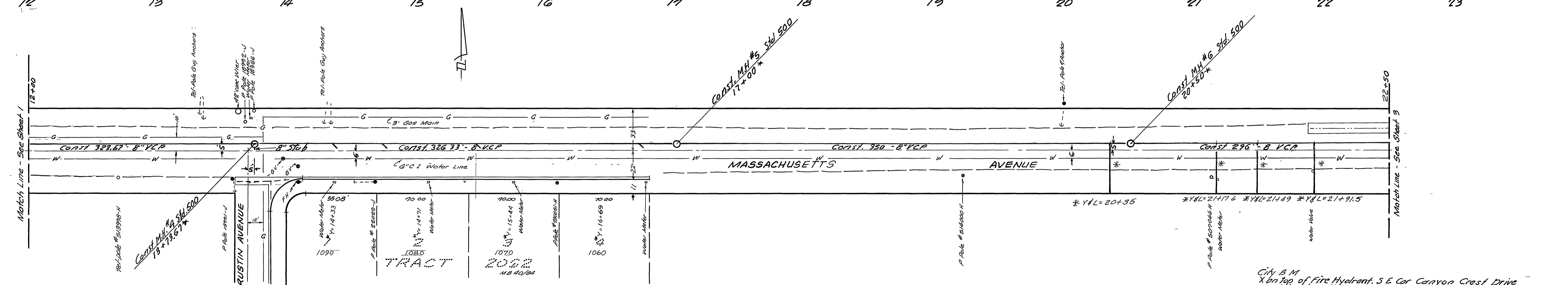
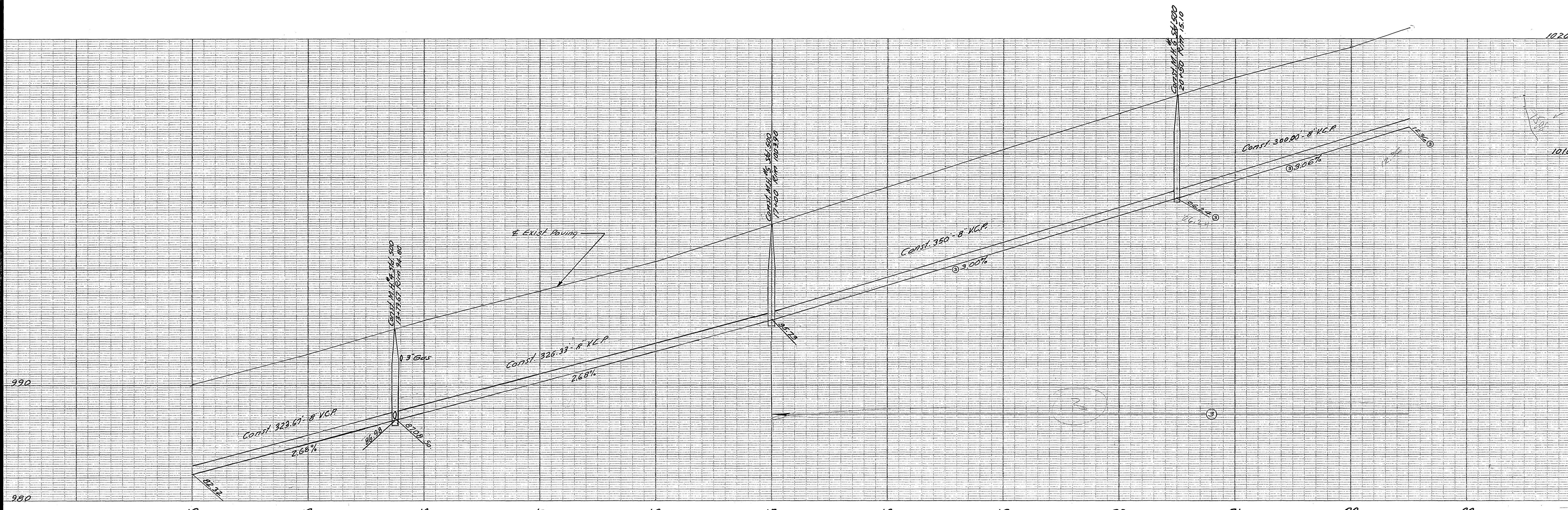


- GENERAL NOTES**
- All pipes shall be installed in accordance with the provisions of the City of Riverside Specifications No. 461 of the City of Riverside Department of Public Works, dated 11-15-62, and any amendments thereto.
  - The contractor shall be responsible for obtaining all necessary permits and for the cost thereof.
  - The contractor shall be responsible for the location and depth of all existing utilities and for the cost of any relocation thereof.
  - Joints in vitrified clay pipe sewers shall conform to ASTM Standard C-425-60T, or the latest revision thereof.
  - Existing underground determined from available records.

City B.M. - X on top of Fire Hydrant S.E. Cor. Canyon Crest Drive & Linden St. Elev. 1042.08

INDEXED		M.D.	
<b>J. F. DAVIDSON-CIVIL ENGINEER</b> R.E. NO. 862 RIVERSIDE, CALIFORNIA APPROVED BY <i>George M. Kelly</i> DATE 8/14/63 R.E. 10288			
<b>CITY OF RIVERSIDE, CALIFORNIA</b> <b>DEPARTMENT OF PUBLIC WORKS</b>			
<b>SEWER PLAN &amp; PROFILE</b> <b>TRACT 2609 - OFFSITE</b> <b>SEWER EXTENSION</b> <b>MASSACHUSETTS AVENUE</b> HORIZ. SCALE 1"=40' VERT. SCALE 1"=4'			
DESIGNED BY		CHECKED BY <i>Ron Kelly</i>	
DRAWN BY		APPROVED BY <i>George M. Kelly</i>	
PROJECT ENGINEER		ASSISTANT CITY ENGINEER	
NO. 5-436		DATE 11-1-63	

W201628 F.B.B.10



City B.M.  
X on top of Fire Hydrant, S.E. Cor Canyon Crest Drive  
and Linden St. Elev. = 1042.08 FB 810

City B.M.  
Chisel ed on Ely and Headwall at S.W. Cor of Iowa &  
Massachusetts Aves. as per City Map 3-25B Sheet 1  
Elev. = 963.15

<b>J. F. DAVIDSON-CIVIL ENGINEER</b> R.E. NO. 882 RIVERSIDE, CALIFORNIA APPROVED BY <i>George E. M. Ludy</i> DATE 8/14/63 R.E. 10028	
<b>CITY OF RIVERSIDE, CALIFORNIA</b> <b>DEPARTMENT OF PUBLIC WORKS</b>	
<b>SEWER PLAN &amp; PROFILE</b> <b>TRACT 2609 - OFFSITE</b> <b>SEWER EXTENSION</b> <b>MASSACHUSETTS AVENUE</b>	
HORIZ. SCALE 1"=40' VERT. SCALE 1"=4'	
DESIGNED BY DRAWN BY RECOMMENDED BY	CHECKED BY <i>Ron Ludy</i> ASSISTANT CITY ENGINEER
APPROVED BY <i>J. F. Davidson</i> DIRECTOR OF PUBLIC WORKS	NO. <b>S-436</b> DATE <b>11-1-63</b> SHEET <b>2</b> OF <b>3</b>

\* As built 11/86 FE W/O 11648 FB 810

