

B.M. Chiseled cross on NW Cor. of Irrigation box at S.E. Can. Monte Vista Canyon Crest Drives. Elev. = 1086.08

J. F. DAVIDSON - CIVIL ENGINEER
R.E. NO. 502
RIVERSIDE, CALIFORNIA
APPROVED BY *George E. McCarty* DATE 3/23/63
R.E. 10688

REVISIONS		
MARK	DATE	DESCRIPTION

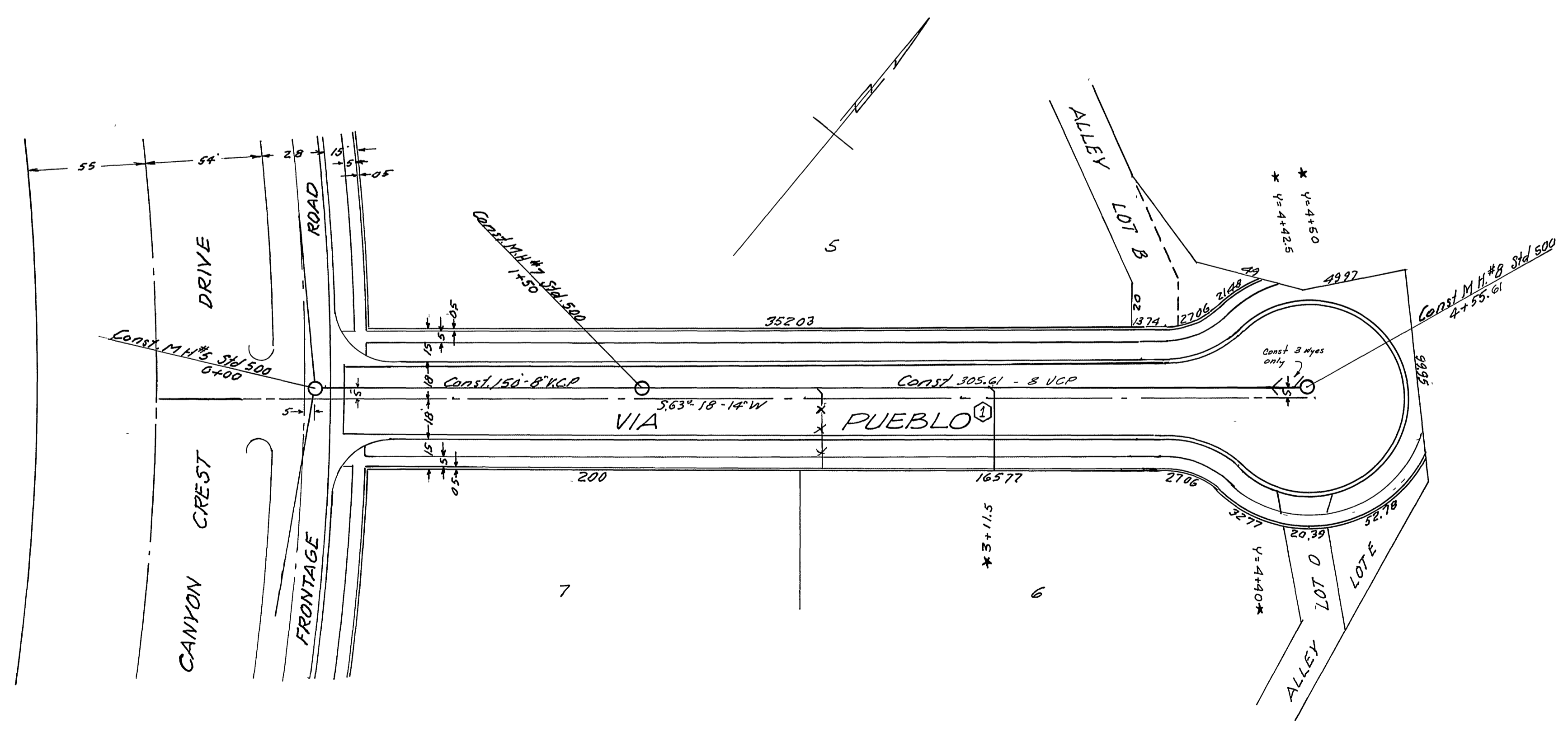
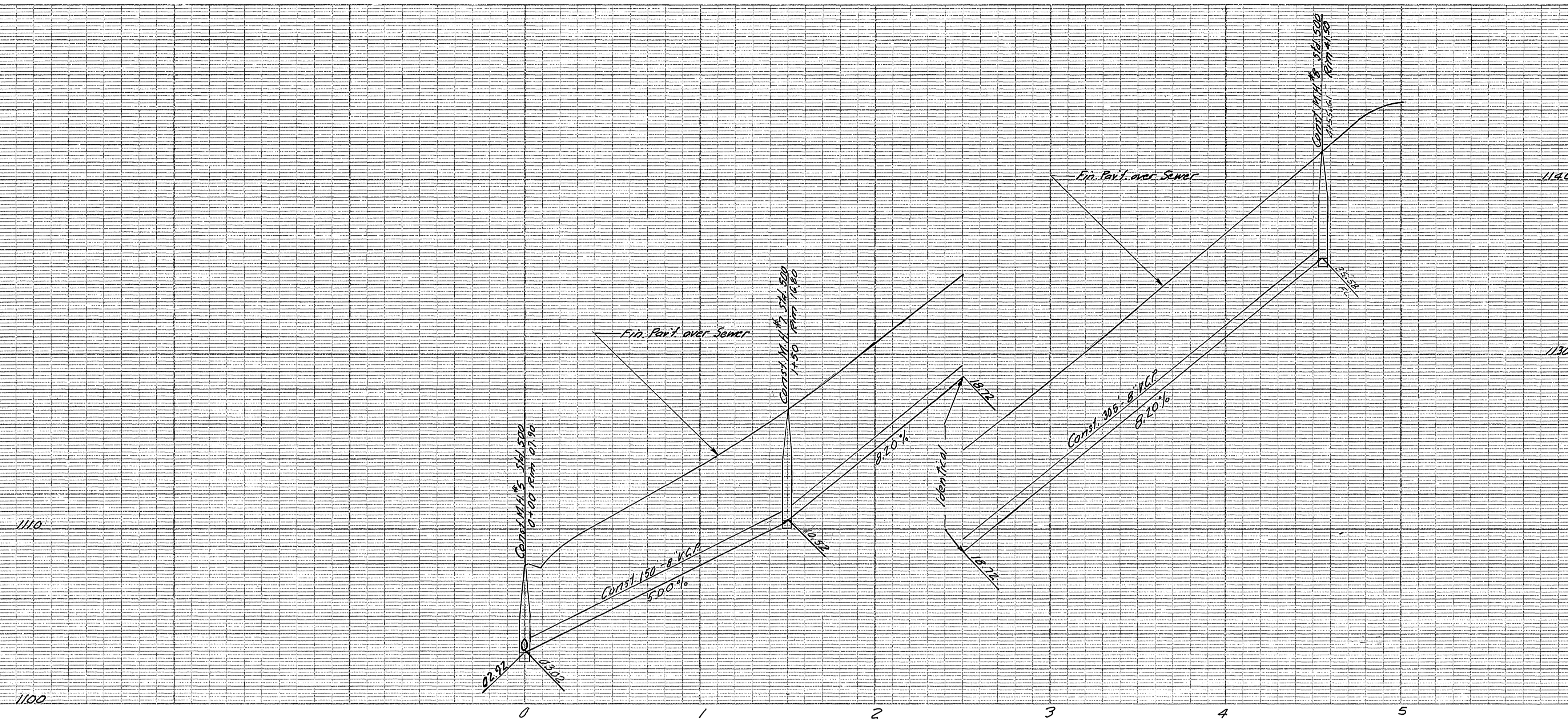
CITY OF RIVERSIDE, CALIFORNIA
DEPARTMENT OF PUBLIC WORKS

SEWER PLAN & PROFILE
FRONTAGE ROAD
ON CANYON CREST DRIVE
TRACT 2721
1" = 20' PLAN SCALE 1" = 4'

* As built 9/10/64 BE
W.D. 11771

W.D.G. R.D. *J. Mantel* S-441
4-3-64

2 3
2718



B.M. Chiseled cross on NW cor. of irrigation box of S.E. Cor. Monte Vista & Canyon Crest Drives. Elev. = 1086.00

J. F. DAVIDSON - CIVIL ENGINEER
R.E. NO. 852
RIVERSIDE, CALIFORNIA
APPROVED BY *Gary C. Milby* DATE 9/23/69
R.E. 10248

CITY OF RIVERSIDE, CALIFORNIA
DEPARTMENT OF PUBLIC WORKS

SEWER PLAN & PROFILE

① VIA PUEBLO

TRACT 2721

HORIZ. SCALE 1" = 40' VERT. SCALE 1" = 4'

DESIGNED BY
DRAWN BY
RECOMMENDED BY

CHECKED BY *Ron Wood*

APPROVED BY *J. F. Davidson* 5-441
Director of Public Works

DATE 9-3-69

REVISIONS	
MARK	DESCRIPTION
①	10-6-64 Change Street Name to 7671 Approved

* As built 9/16/64 B.E. WCO 1177/