

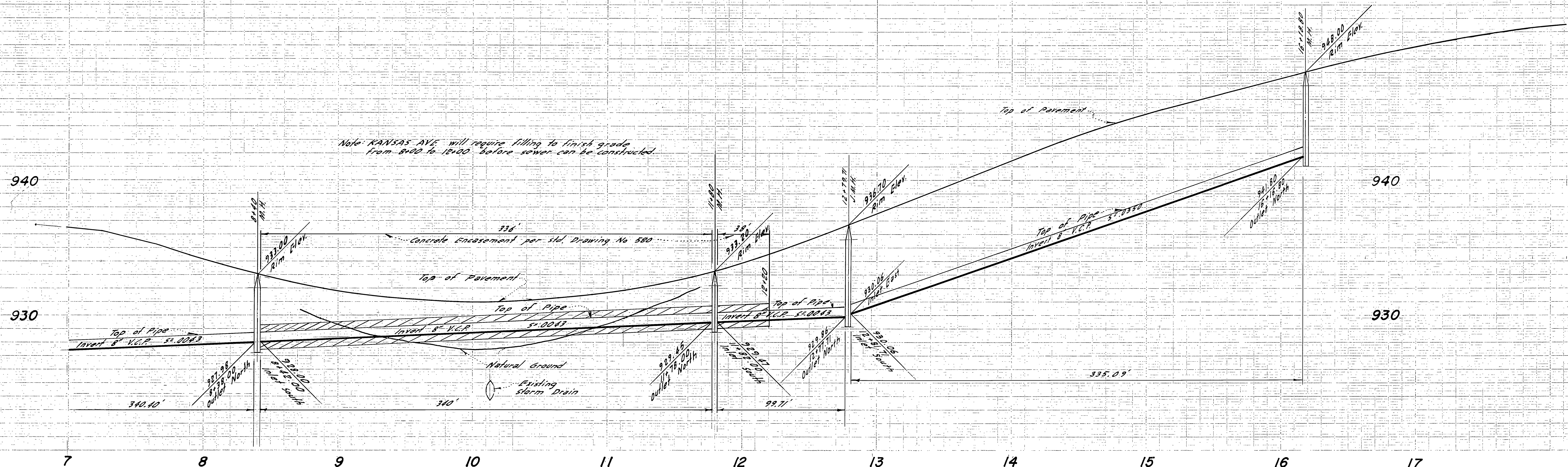
CONTACT TELEPHONE
60' IN ADVANCE PRIOR
TO EXCAVATION
684-0071
547-6606

NOTE:
If underground Public Utilities other structures or lot dimensions outside of Tract No. 2716 are shown hereon it is for information only having been obtained from the best available sources, but from others not connected with this firm. Therefore no guarantee is made as to the accuracy or completeness of said information.

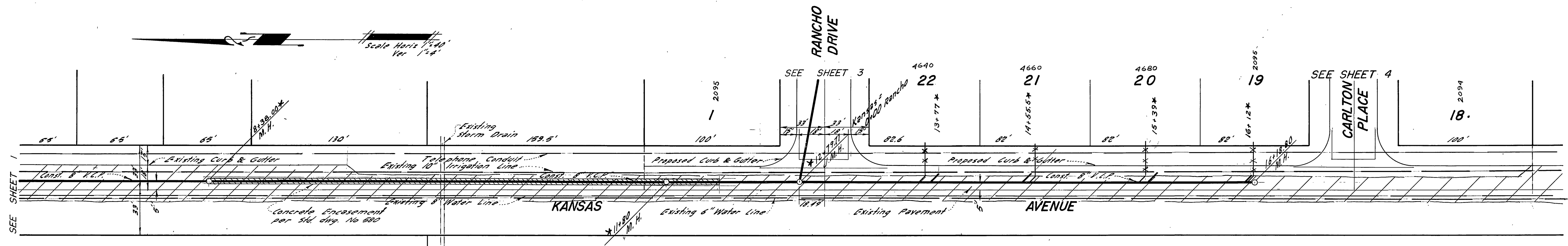
- GENERAL NOTES**
- Construction shall be in accordance with the City of Riverside, Dept. of Public Works, standard specifications, No. 451 and Standard Drawings.
 - It shall be the responsibility of the contractor to clear the right of way in accordance with the provisions of the law as it affects each utility including irrigation lines and appurtenances and at no cost to the City.
 - Joints in vitrified clay pipe sewers shall conform to ASTM Standard G-407 or the latest revision thereof.
 - Pipe shall be bedded per Case II Standard Drawing No. 452 unless otherwise specified on plan.
 - 24\"/>

APPROVED <i>Howard A. Creason</i> CITY OF RIVERSIDE IRRIGATION DIVISION		GARNER TRACADAS & TROY 360 NORTH ARROWHEAD AVE. SAN BERNARDINO, CALIFORNIA <i>Frank Tracadas</i> 10/16/63 FRANK TRACADAS RE NO 11447	
REVISIONS			
MARK	DATE	DESCRIPTION	
*	7-3-64	As built BE	
DESIGNED BY		CHECKED BY <i>Rou</i>	APPROVED BY <i>Frank Tracadas</i>
DRAWN BY		DIRECTOR OF PUBLIC WORKS	
RECOMMENDED BY <i>P. B. Sheel</i>		ASSISTANT CITY ENGINEER	DATE 2-18-64
CITY OF RIVERSIDE CALIFORNIA DEPARTMENT OF PUBLIC WORKS			S-443
SEWER PLAN & PROFILE TRACT NO. 2716 VASQUEZ PL. & KANSAS AVE.			SHEET 1 OF 4

Bench Mark Lead & Nail in curb at NW cor Kansas Ave. & Prince Albert Drive Elevation 353.30
5057



Note: KANSAS AVE. will require filling to finish grade from 8+00 to 16+00 before sewer can be constructed.



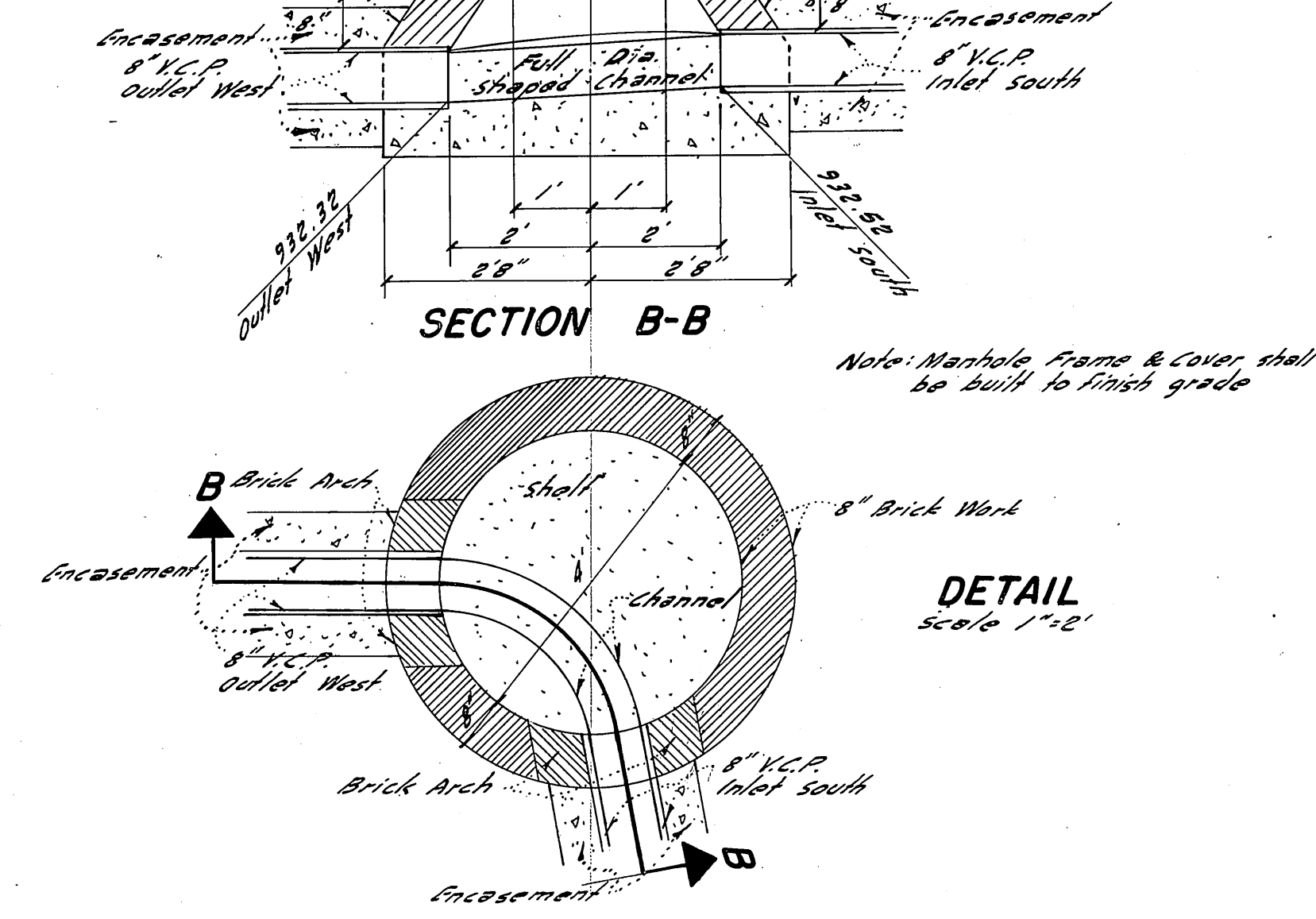
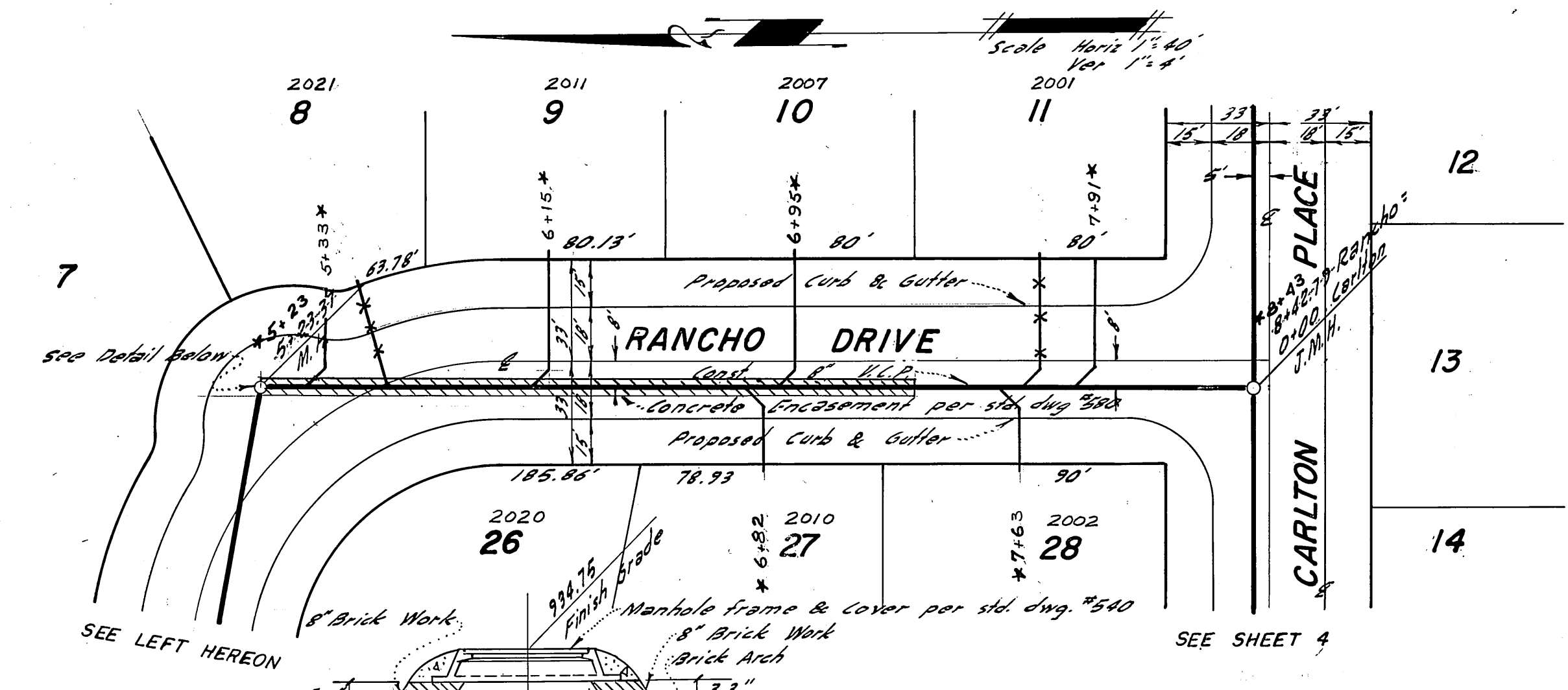
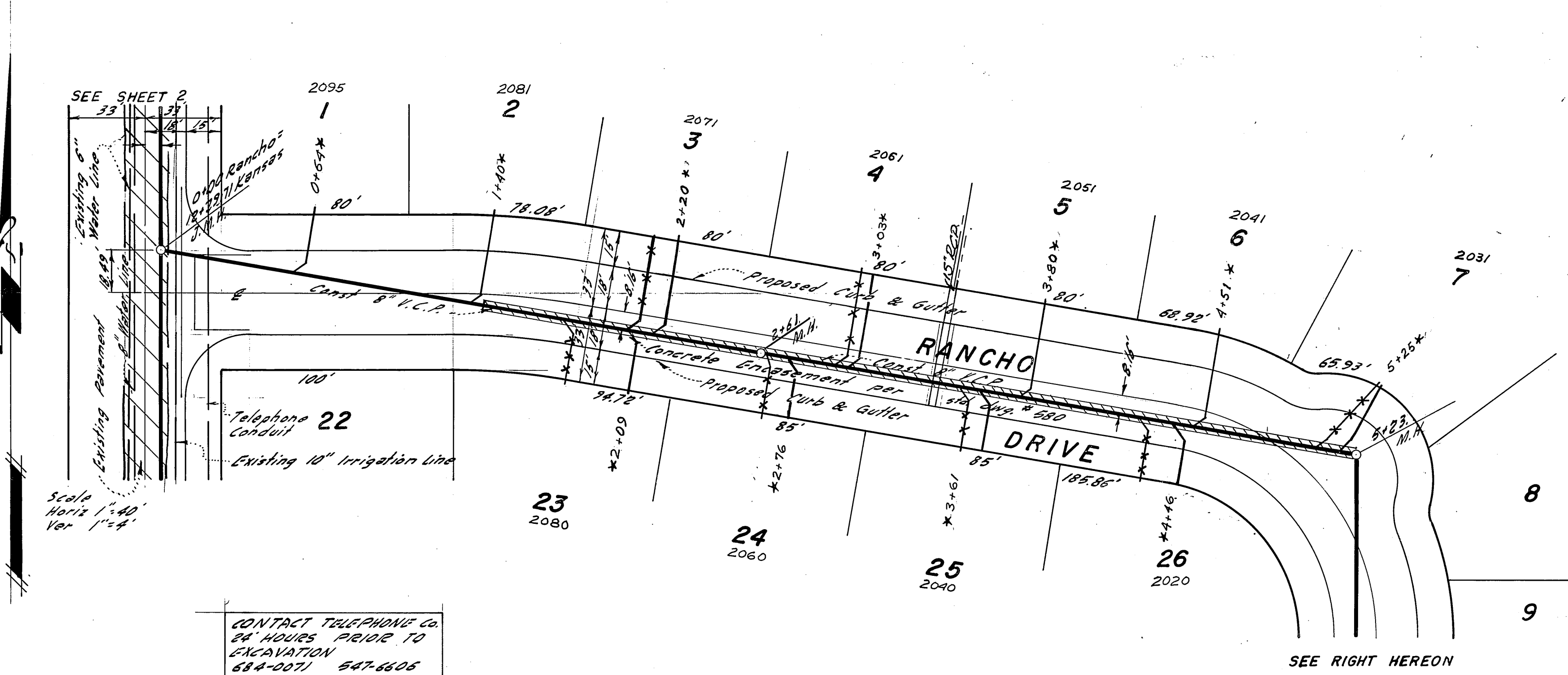
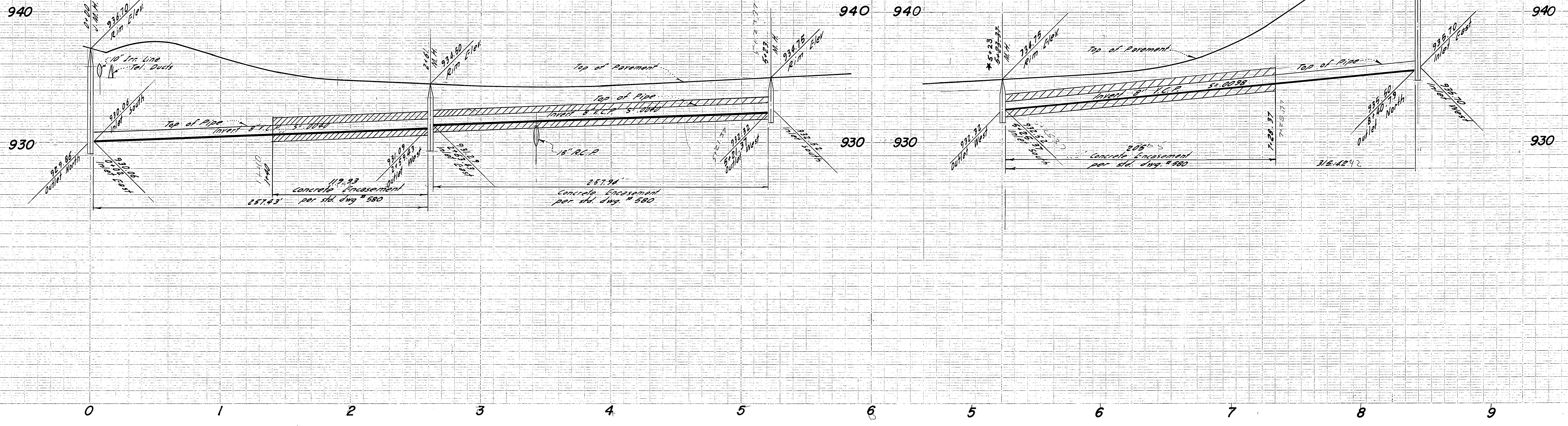
CONTACT TELEPHONE CO.
24 HOURS PRIOR TO
EXCAVATION
654-0071 547-6606

B.M. Load & Nail in curb at N.W. cor. Kansas Ave. & Prince Albert Dr. Elevation 953.30

GARNER TRACADAS & TROY
360 NORTH ARROWHEAD AVE.
SAN BERNARDINO, CALIFORNIA
Frank Tracadas 10/16/63
FRANK TRACADAS RE NO 11447

REVISIONS			CITY OF RIVERSIDE CALIFORNIA DEPARTMENT OF PUBLIC WORKS
MARK	DATE	DESCRIPTION	
*	7-6-64	As built B.E.	SEWER PLAN & PROFILE TRACT NO. 2716 KANSAS AVE.

DESIGNED BY	CHECKED BY <i>Ren</i>	APPROVED BY <i>James</i>	S-443
DRAWN BY		DIRECTOR OF PUBLIC WORKS	
RECOMMENDED BY <i>A.P. Theal</i>	ASSISTANT CITY ENGINEER	DATE 2-18-64	SHEET 2 OF 4

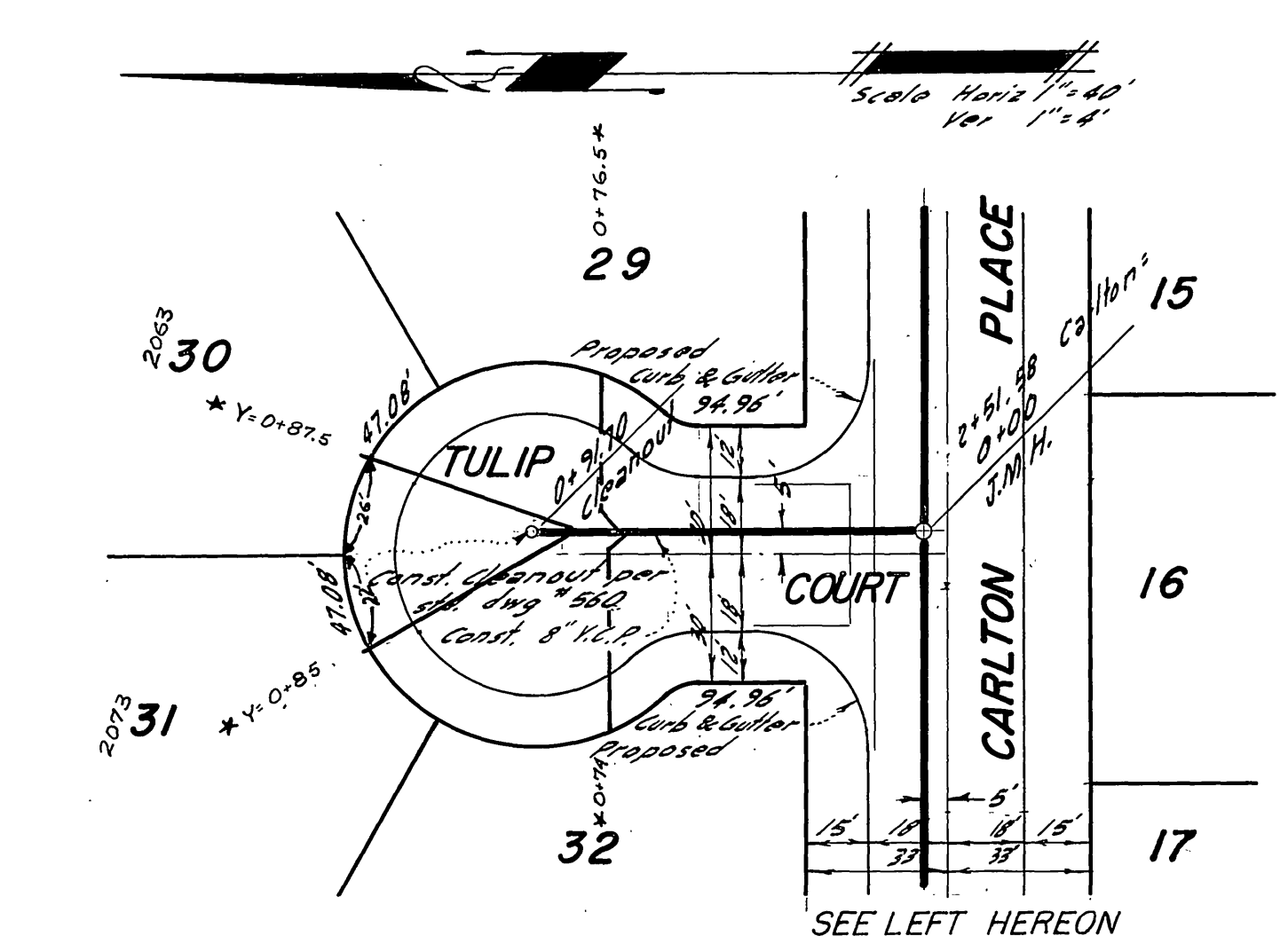
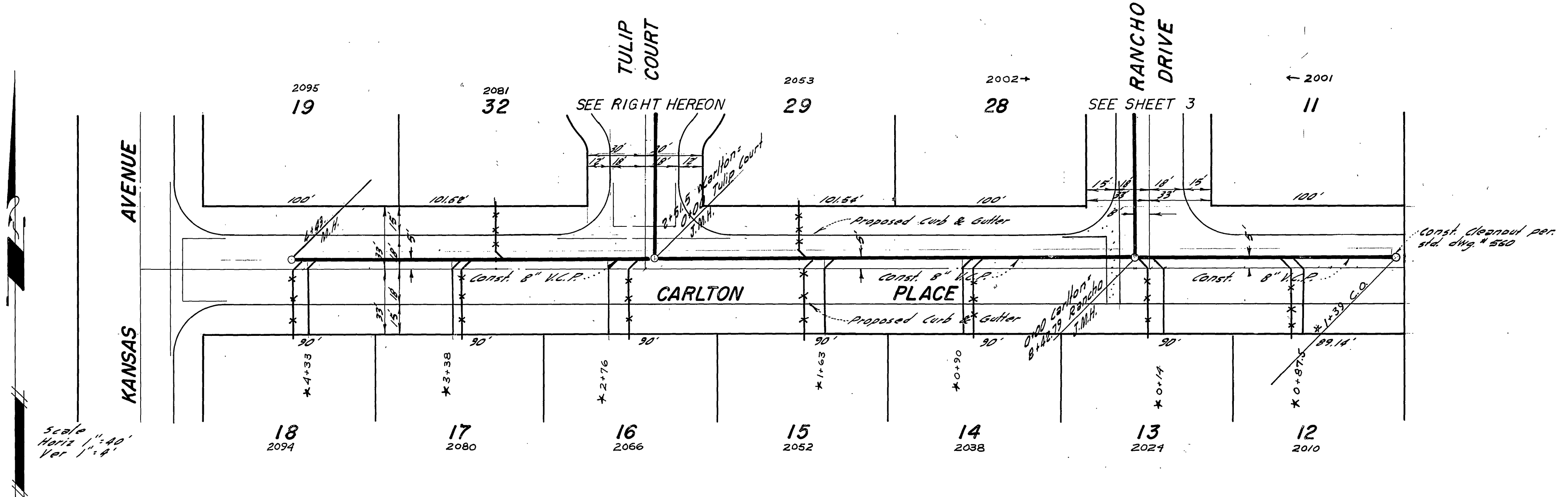
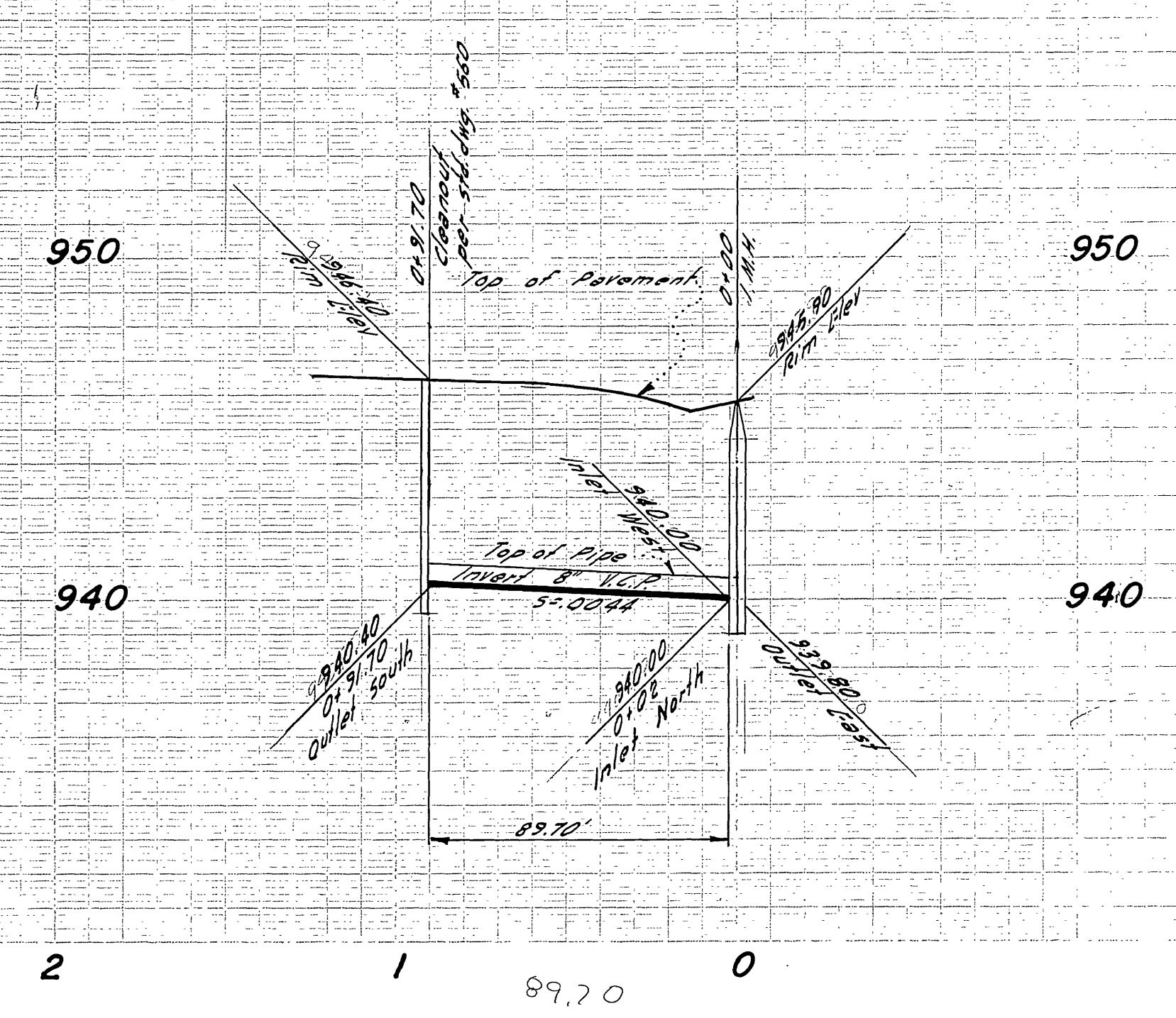
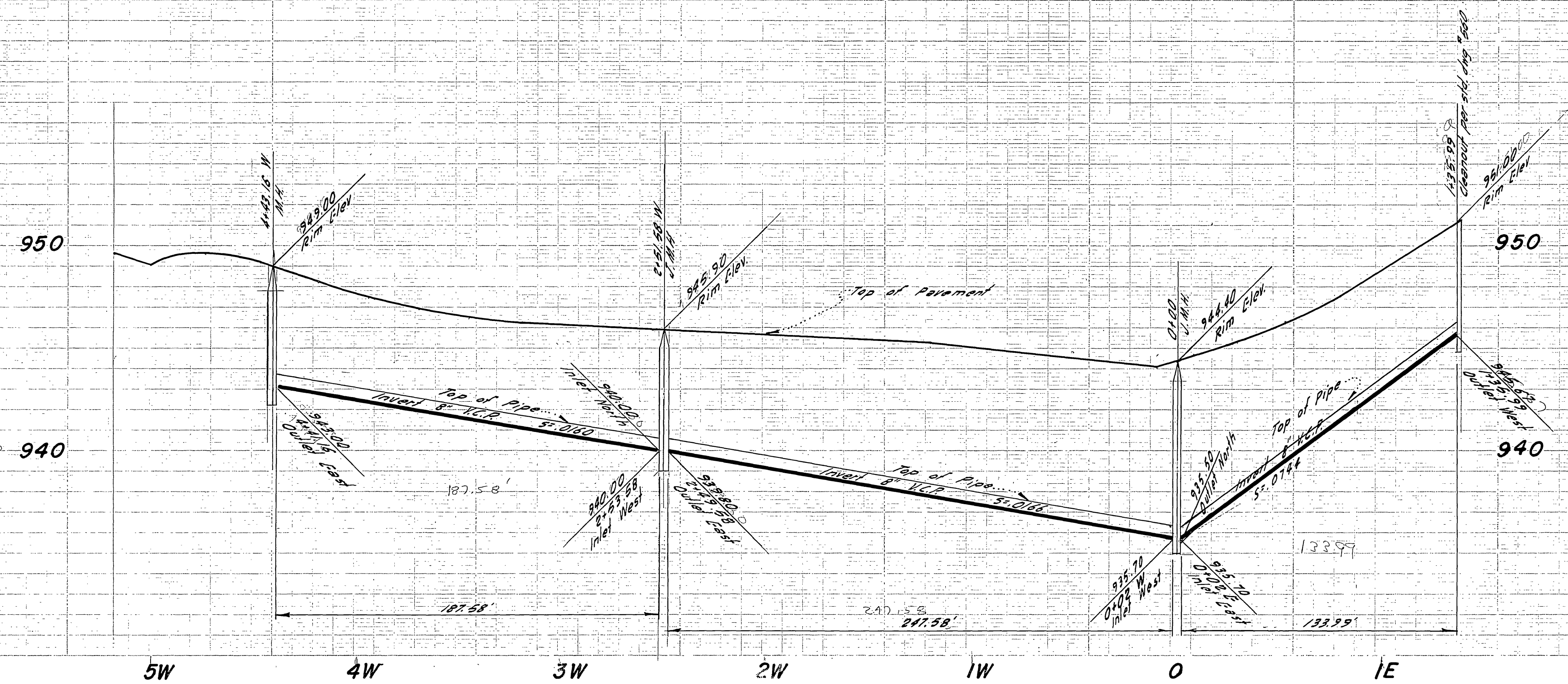


CONTRACT TELEPHONE Co.
24 HOURS SERVICE TO
EXCAVATION
684-0071 647-6606

Bench Mark Lead & Nail in curb at NW cor.
Kansas Ave & Prince Albert Dr.
Elev. 953.30

GARNER TRACADAS & TROY
360 NORTH ARROWHEAD AVE. -
SAN BERNARDINO, CALIFORNIA
Frank Tracadas 10/16/63
FRANK TRACADAS RE NO 11447

REVISIONS			CITY OF RIVERSIDE CALIFORNIA DEPARTMENT OF PUBLIC WORKS
MARK	DATE	DESCRIPTION	
*	7-6-64	As built BE	SEWER PLAN & PROFILE TRACT NO. 2716 RANCHO DRIVE
DESIGNED BY	CHECKED BY	APPROVED BY	5-443
DRAWN BY	WDS	<i>Frank Tracadas</i> DIRECTOR OF PUBLIC WORKS	
RECOMMENDED BY	ASSISTANT CITY ENGINEER	DATE	2-18-64 SHEET 3 OF 4



Bench Mark Lead & Nail in curb at N.W. cor. Kansas Ave. & Prince Albert Dr. Elev. 953.30

GARNER TRACADAS & TROY
 360 NORTH ARROWHEAD AVE.
 SAN BERNARDINO, CALIFORNIA
Frank Tracadas 10/16/63
 FRANK TRACADAS RE NO 11447

REVISIONS			CITY OF RIVERSIDE, CALIFORNIA DEPARTMENT OF PUBLIC WORKS
MARK	DATE	DESCRIPTION	
*	7-6-64	As built B.E.	SEWER PLAN & PROFILE TRACT NO. 2716 CARLTON PLACE

DESIGNED BY	CHECKED BY <i>Boy</i>	APPROVED BY <i>W. J. ...</i>	S-443
DRAWN BY		DIRECTOR OF PUBLIC WORKS	
RECOMMENDED BY <i>A.P. Neal</i>	ASSISTANT CITY ENGINEER	DATE 2-18-64	SHEET 4 OF 4