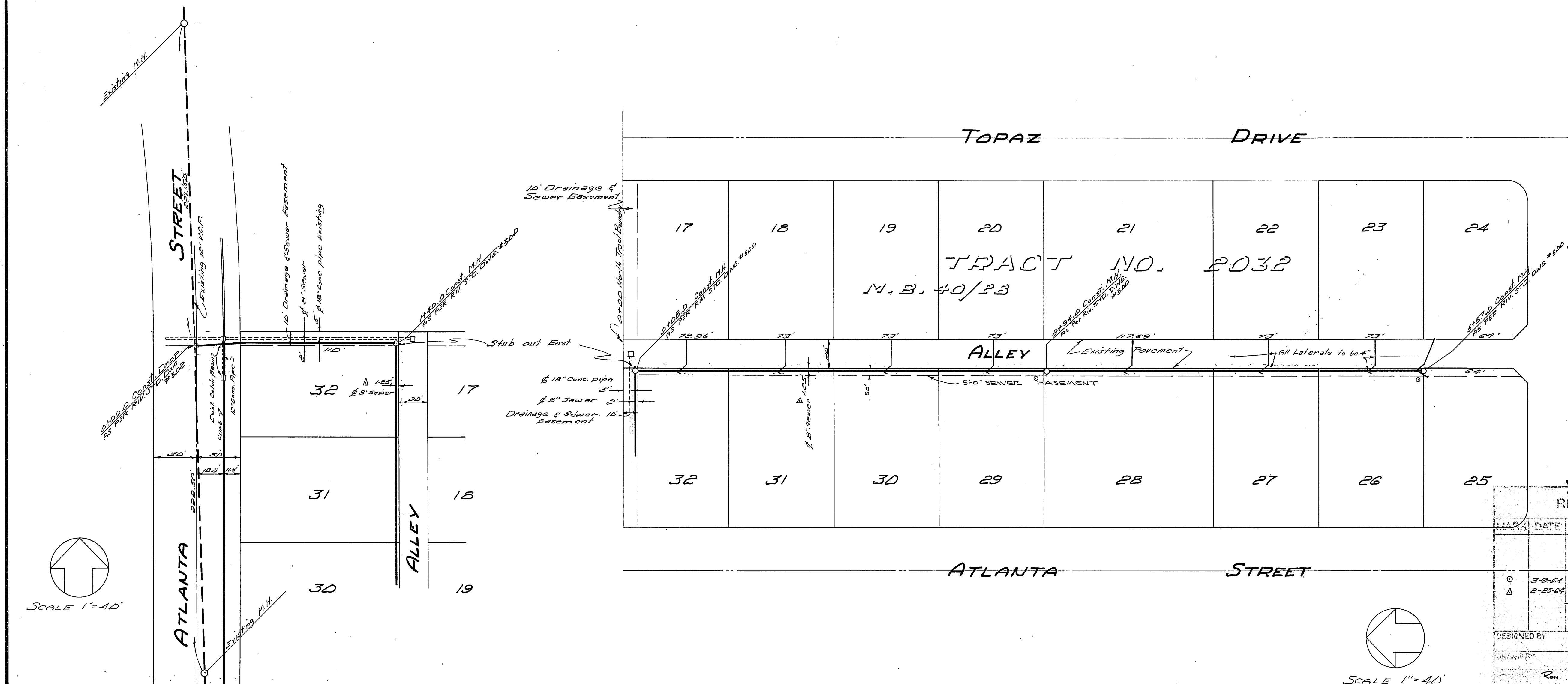


SCALE
 VERT. 1" = 4'
 HORIZ. 1" = 40'

940
 939

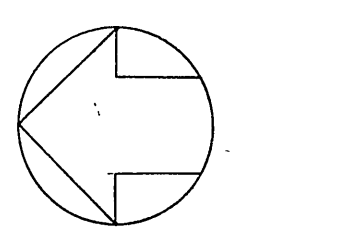
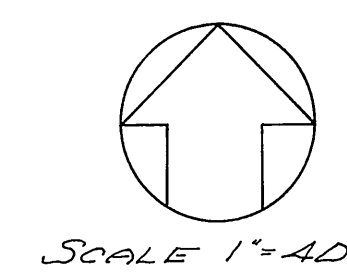


- NOTES
1. All construction to be in accordance with City of Riverside Standard Specifications No. 461 and Standard Drawings.
 2. It shall be the responsibility of the contractor to clear the right of way in accordance with the provisions of the law as it affects each utility including irrigation lines and appurtenances and at no cost to the City.
 3. Manhole covers to meet finish grade as it exists on Atlanta Street & Alley.
 4. Bench Mark: 60 D spk. & tin in N.M. curb return on Massachusetts Ave. at Turquoise Street F.B. 669/12 Elev. 951.244.
 5. Joints in vitrified clay pipe sewers shall conform to ASTM Standards C-425-6DT, or the latest revision thereof.
 6. Pipe shall be bedded per Case II, Standard Drawing No. 452, unless otherwise specified on plan.
 7. Location of wyes and laterals to be determined in the field.
 8. All wyes and laterals to be constructed in accordance with Standard Drawing No. 562, wyes shall be plugged and capped.

DATE 11-25-63
 DESIGNED BY R/L
 CHECKED BY
 CIVIL BY
 CITY OF
 CARLETON W. LOCKWOOD
 AND ASSOCIATES
 CIVIL ENGINEER
 380 W. FOOTHILL BLVD.
 RIALTO, CALIFORNIA TR-55015
 Dec 18 1963 RCE 9161

REVISIONS			CITY OF RIVERSIDE, CALIFORNIA DEPARTMENT OF PUBLIC WORKS	
MARK	DATE	DESCRIPTION		
0	3-9-64	Move Manholes using		
Δ	2-25-64	Move main in north-south alley to the west		

DESIGNED BY
 SUBMITTED BY
 APPROVED BY
 PROJECT NO. S-446
 DATE 1-3-64
 SHEET 1 OF 1



SCALE 1" = 40'

SCALE 1" = 40'