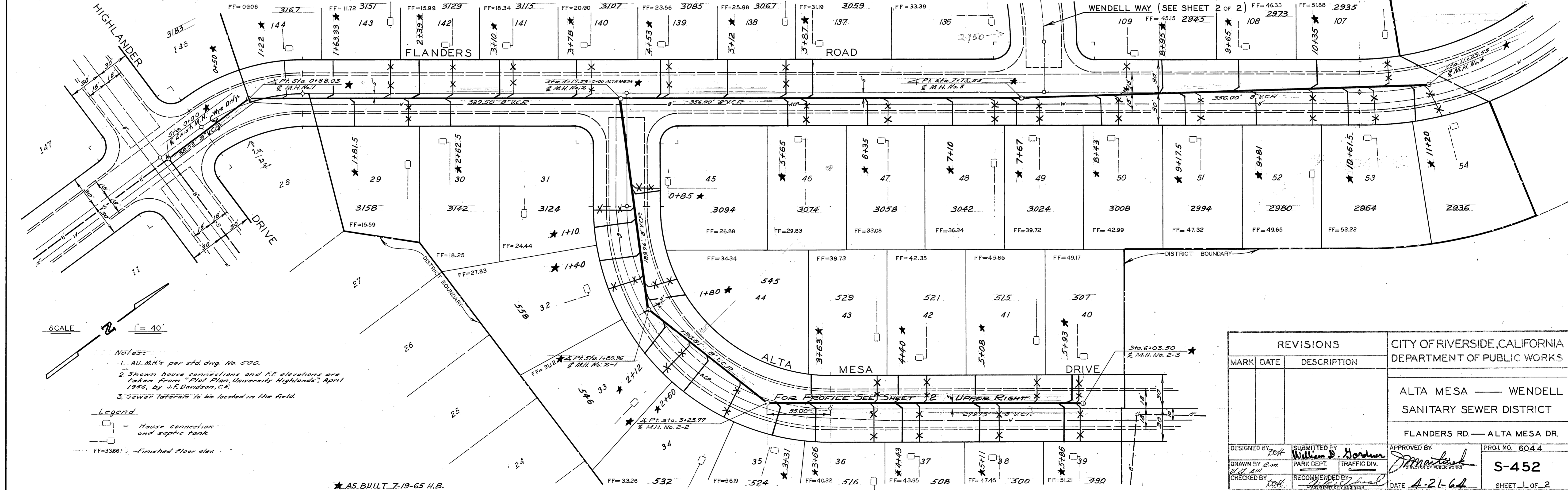


B.M. - Elev. 1102.51 - P.K. in lead in S.W. cb. return Highlander & Flanders.
 Elev. 1132.69 - P.K. in lead in S.W. corner Wendell Way & Flanders.
 F.B. 5-7
 F.B. - 5-10 Pg. 1-7, 5-7 Pg. 47-48
 Scale - Horiz. 1"=40'
 Vert. 1"=4'



SCALE 1" = 40'

- Notes:
- All M.H.'s per std. dwg. No. 500.
 - Shown house connections and FF elevations are taken from "Plot Plan, University Highlands", April 1956, by W.R. Davidson, C.E.
 - Sewer laterals to be located in the field.

Legend

- House connection and septic tank
- FF=3366 - Finished floor elev.

AS BUILT 7-19-65 H.B.

REVISIONS			CITY OF RIVERSIDE, CALIFORNIA DEPARTMENT OF PUBLIC WORKS
MARK	DATE	DESCRIPTION	
			ALTA MESA — WENDELL SANITARY SEWER DISTRICT
			FLANDERS RD. — ALTA MESA DR.

DESIGNED BY <i>W.D.</i>	SUBMITTED BY <i>William D. Gardner</i>	APPROVED BY <i>W.D. Gardner</i>	PROJ. NO. 604.4
DRAWN BY <i>E.M.</i>	PARK DEPT. TRAFFIC DIV.	CITY OF RIVERSIDE	S-452
CHECKED BY <i>W.D.</i>	RECOMMENDED BY <i>W.D. Gardner</i>	DATE 4-21-64	SHEET 1 OF 2

