
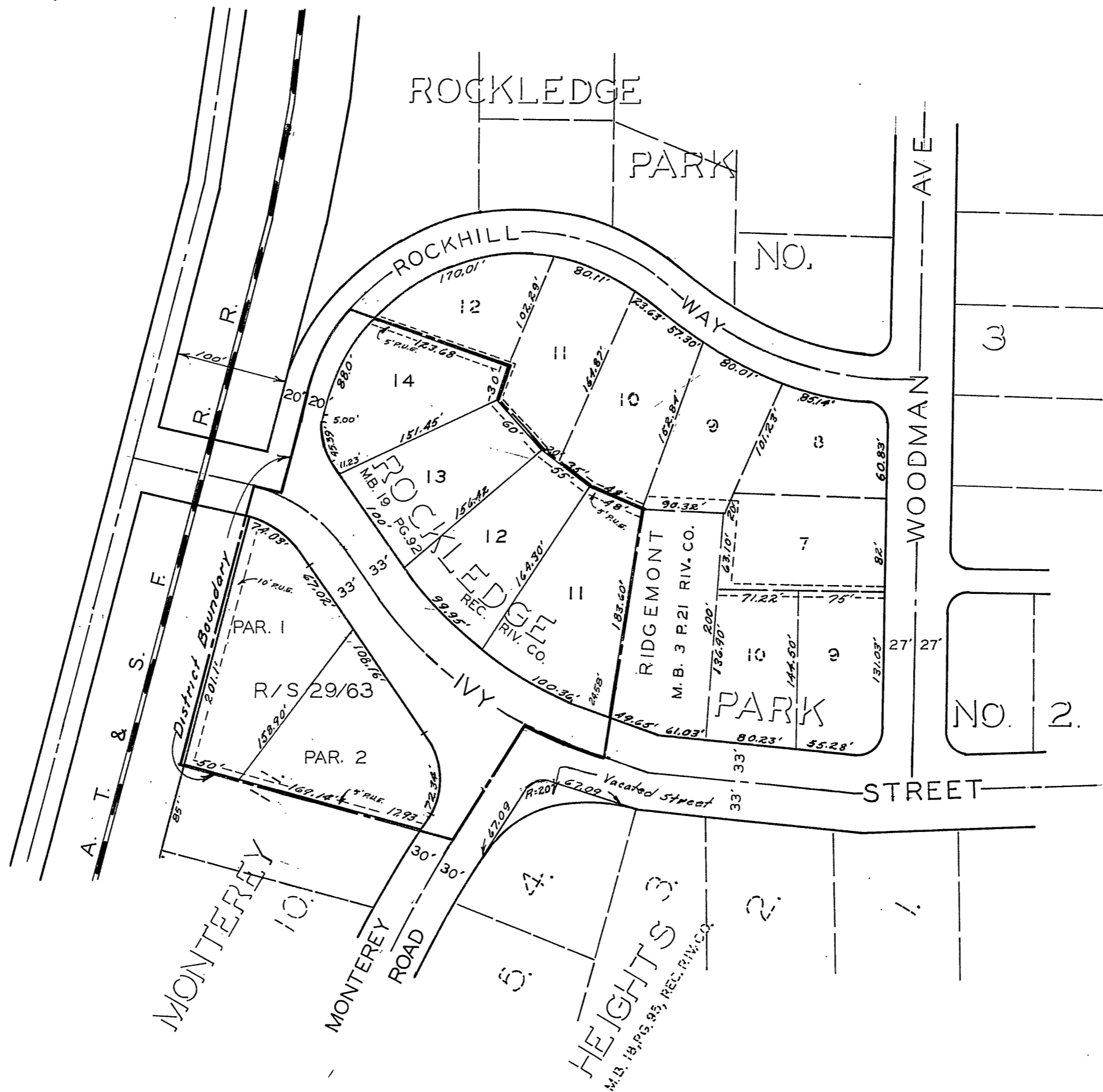


SCALE:  1"=100'



MAP SHOWING THE LANDS INCLUDED WITHIN THE ASSESSMENT DISTRICT TO BE BENEFITED BY THE CONSTRUCTION OF A SANITARY SEWER AND STREET IMPROVEMENTS.

REVISIONS			CITY OF RIVERSIDE, CALIFORNIA DEPARTMENT OF PUBLIC WORKS	
MARK	DATE	DESCRIPTION		
			IVY STREET IMPROVEMENT DISTRICT	
DESIGNED BY	SUBMITTED BY	APPROVED BY	PROJ. NO. 6046	
DRAWN BY <i>WJH</i>	<i>William D. Gardner</i> PARK DEPT. TRAFFIC DIV.	<i>J. M. Antonek</i> DIRECTOR OF PUBLIC WORKS	S-457-A	
CHECKED BY <i>g. 198</i>	RECOMMENDED BY <i>[Signature]</i> ASSISTANT CITY ENGINEER	DATE: 8-13-64	SHEET 6 OF 1	