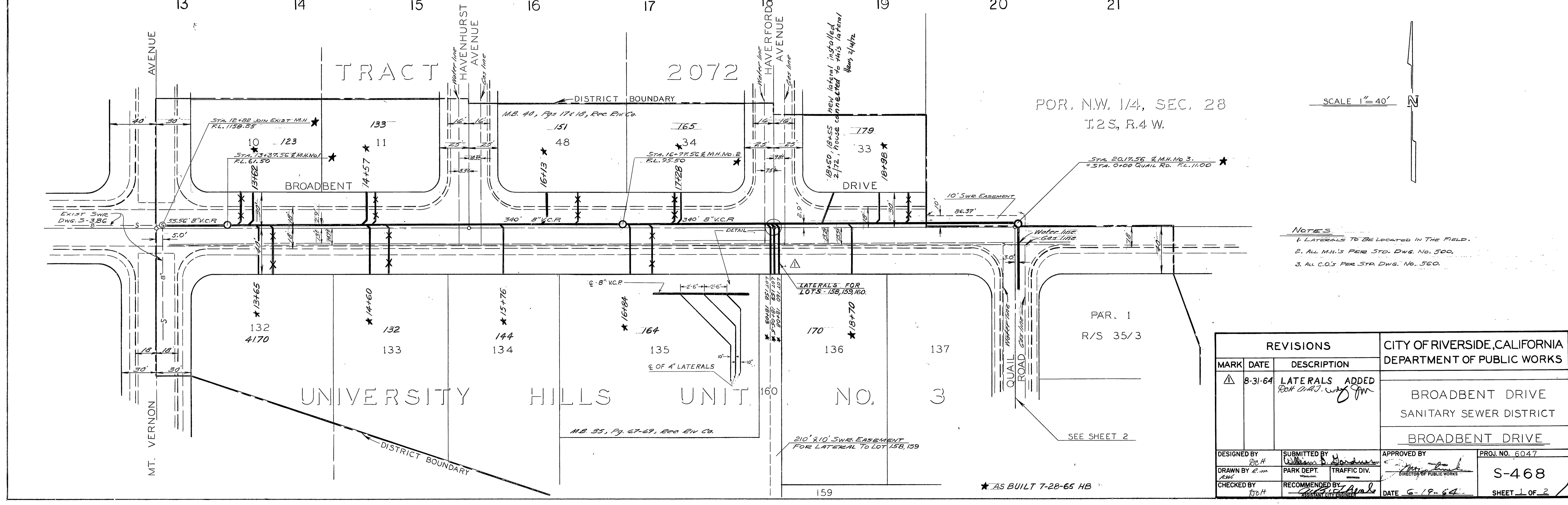


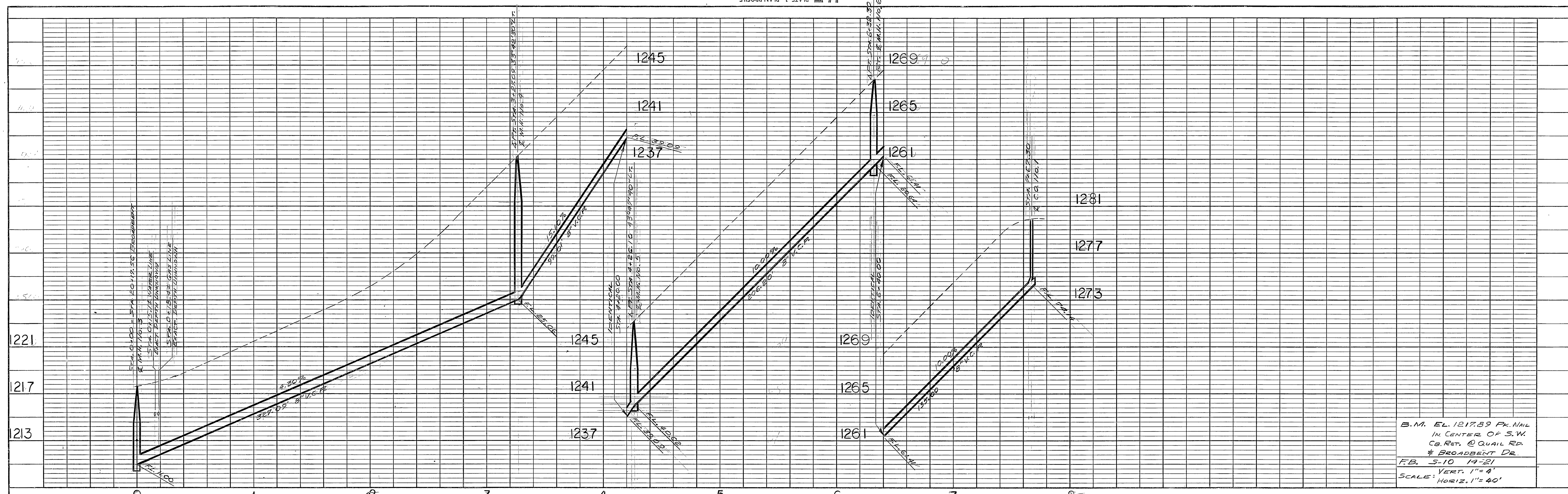
PROFILE		BY	DATE
NOTED	DESIGNED		
PLOTTED	CHECKED		
GRADES CHECKED	BY		
BY	DATE		



PLAN		BY	DATE
NOTED	DESIGNED		
PLOTTED	CHECKED		
ALIGNMENT CHECKED	BY		
RT. OF WAY CHECKED	DATE		

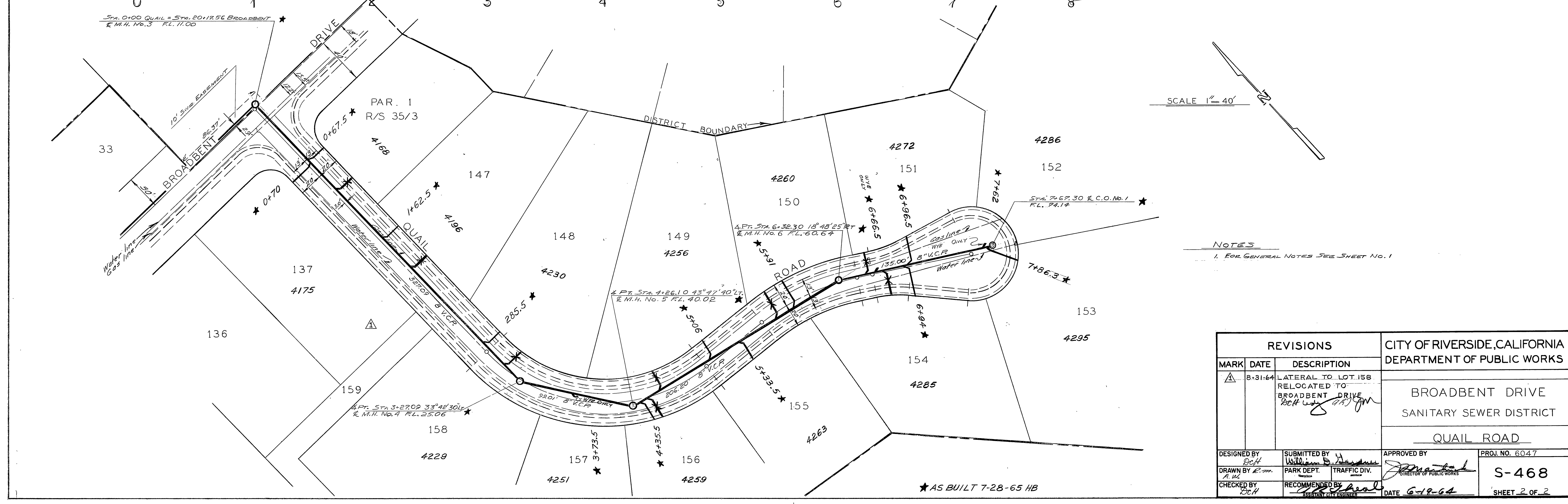
REVISIONS		CITY OF RIVERSIDE, CALIFORNIA DEPARTMENT OF PUBLIC WORKS	
MARK	DATE	DESCRIPTION	
▲	8-31-64	LATERALS ADDED <i>Revised</i>	
		BROADBENT DRIVE SANITARY SEWER DISTRICT BROADBENT DRIVE	
DESIGNED BY	SUBMITTED BY	APPROVED BY	PROJ. NO. 6047
DRAWN BY R.M.	PARK DEPT. TRAFFIC DIV.	<i>[Signature]</i>	S-468
CHECKED BY R.C.H.	RECOMMENDED BY	DATE 6-19-64	SHEET 1 OF 2

★ AS BUILT 7-28-65 HB



B.M. EL. 1217.89 Pk. Nail  
 IN CENTER OF S.W.  
 CORNER OF QUAIL RD.  
 & BROADBENT DR.  
 F.B. 5-10 19-21  
 VERT. 1" = 4'  
 SCALE: HORIZ. 1" = 40'

PROFILE	SUBMITTED	BY	DATE
NOTE BOOK	PLOTTED		
GRADES CHECKED	ALIGNMENT CHECKED		
NO.	RT. OF WAY CHECKED		



SCALE 1" = 40'

NOTES  
 1. FOR GENERAL NOTES SEE SHEET NO. 1

PLAN	SUBMITTED	BY	DATE
NOTE BOOK	PLOTTED		
ALIGNMENT CHECKED	RT. OF WAY CHECKED		
NO.			

REVISIONS			CITY OF RIVERSIDE, CALIFORNIA DEPARTMENT OF PUBLIC WORKS	
MARK	DATE	DESCRIPTION		
△	8-31-64	LATERAL TO LOT 158 RELOCATED TO BROADBENT DRIVE <i>Boch</i>	BROADBENT DRIVE SANITARY SEWER DISTRICT QUAIL ROAD	
DESIGNED BY	SUBMITTED BY	APPROVED BY	PROJECT NO.	6047
DRAWN BY <i>Boch</i>	<i>William D. Heston</i>	<i>Boch</i>	S-468	
CHECKED BY <i>Boch</i>	RECOMMENDED BY <i>Boch</i>	DATE <i>6-19-64</i>	SHEET 2 OF 2	

★ AS BUILT 7-28-65 HB