

ASSESSMENT NO. 503

DIAGRAM

EXHIBITING BROADBENT DRIVE SANITARY SEWER DISTRICT
IN THE CITY OF RIVERSIDE, CALIFORNIA, AND THE WORK WHICH HAS BEEN DONE
PURSUANT TO THE CONTRACT BETWEEN THE SUPERINTENDENT OF STREETS OF
SAID CITY AND PATRICK S. MELE dba GENERAL ENGINEERING CONTRACTING DATED
OCT. 21, 1964, FOR THE CONSTRUCTION OF A SANITARY SEWER AND APPURTENANCES.

AS IS MORE PARTICULARLY DESCRIBED IN SAID CONTRACT, TO WHICH REFERENCE
IS HEREBY MADE FOR FURTHER PARTICULARS.

SAID DIAGRAM ALSO SHOWS EACH SEPARATE LOT OR PARCEL OF LAND WITHIN THE
LIMITS OF THE ASSESSMENT DISTRICT, AND THE DIMENSIONS OF EACH SUCH LOT OR
PARCEL OF LAND, AND THE RELATIVE LOCATION OF THE SAME TO THE WORK DONE.
EACH LOT OR PARCEL OF LAND IS NUMBERED IN RED INK TO CORRESPOND TO THE
RED INK NUMBERS IN THE ASSESSMENT.

HEREIN FIGURES NEXT TO PROPERTY LINES SHOW LENGTH OF SAID LINES IN FEET
AND DECIMALS THEREOF.

THE MARK (') MEANS FEET.

PROPERTY LINES THAT DIFFER FROM THE RECORDED SUBDIVISIONS ARE SHOWN BY
BROKEN LINES.

THE DISTRICT BENEFITED IS BOUNDED BY A HEAVY DASHED LINE.

PROPERTY INCLUDED IN THIS ASSESSMENT IS SHOWN ON THE FOLLOWING RECORD-
ED MAPS:




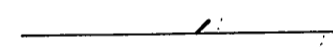
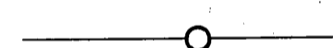
TRACT No. 2072 - M.B. 40, PGS. 17 & 18, RIV. CO. REC.

RECORD OF SURVEY - BOOK 35, PG. 3, RIV. CO. REC.

UNIVERSITY HILLS UNIT NO. 3 - M.B. 35, PGS. 67-69, RIV. CO. REC.

RECORD OF SURVEY - BOOK 45, PG. 66, RIV. CO. REC.

HEREIN THE DIFFERENT KINDS OF WORK
PERFORMED ARE SHOWN AS FOLLOWS:

	8" MAIN SEWER
	4" HOUSE CONNECTION LATERAL
	8" x 4" WYE
	MANHOLE
	CLEANOUT

HERE FOLLOWS A STATEMENT OF AMOUNTS OF
DIFFERENT KINDS OF WORK DONE PURSUANT TO
THE HERE-IN-BEFORE IDENTIFIED CONTRACT
AND TO RESOLUTION OF INTENTION NO. 10027,
ADOPTED BY THE CITY COUNCIL OF THE CITY
OF RIVERSIDE, CALIFORNIA ON THE 14th DAY
OF JULY, 1964.

1503 L.F. 8" VITRIFIED CLAY PIPE
673 L.F. 4" VITRIFIED CLAY PIPE
27 EA. 8" x 4" WYES
6 EA. MANHOLES - STD. DWG. NO. 500.
1 EA. CLEANOUTS - STD. DWG. NO. 560.
4735 S.F. PAVEMENT REPLACEMENT

I HEREBY CERTIFY THAT THE ABOVE WORK WAS DONE IN ACCORDANCE
WITH LINES AND GRADES FURNISHED OR APPROVED BY ME, AND THAT
THE DIAGRAM OF THE ASSESSMENT DISTRICT AND THE QUANTITIES
OF WORK SHOWN HEREON ARE CORRECT.

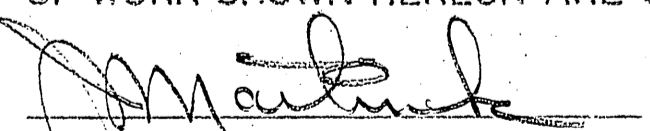

CITY ENGINEER OF THE
CITY OF RIVERSIDE, CALIFORNIA

DIAGRAM RECEIVED:

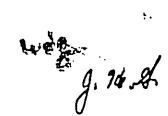
THIS DAY OF , 19

SUPERINTENDENT OF STREETS OF THE
CITY OF RIVERSIDE, CALIFORNIA

RECORDED:

AT O'CLOCK, .M.,
THIS DAY OF , 19

SUPERINTENDENT OF STREETS OF THE
CITY OF RIVERSIDE, CALIFORNIA



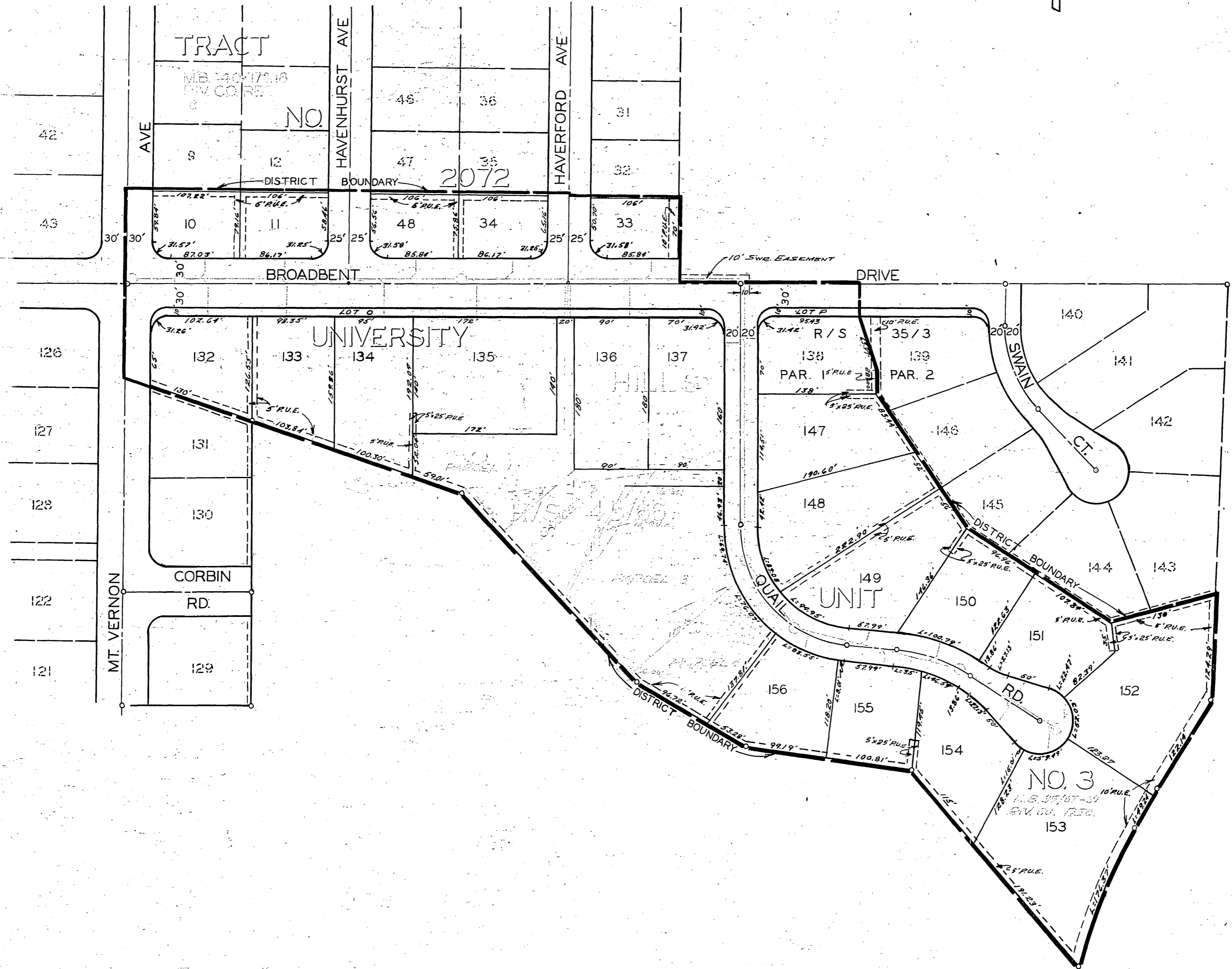
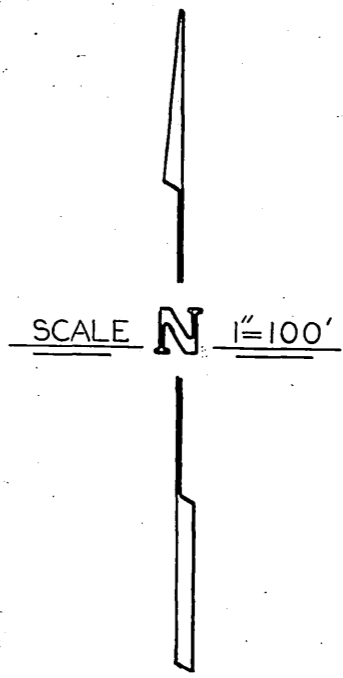


DIAGRAM OF THE PROPERTY AFFECTED OR BENEFITED BY THE WORK IN THE BROADBENT DRIVE SANITARY SEWER DISTRICT.

REVISIONS			CITY OF RIVERSIDE, CALIFORNIA DEPARTMENT OF PUBLIC WORKS	
MARK	DATE	DESCRIPTION		
			BROADBENT DRIVE SANITARY SEWER DISTRICT	
DESIGNED BY	SUBMITTED BY		APPROVED BY	PROJ. NO. 6047
DRAWN BY V.G.	PARK DEPT.	TRAFFIC DIV.	S-468	
CHECKED BY	RECOMMENDED BY		DIRECTOR OF PUBLIC WORKS	SHEET ___ OF ___
	ASSISTANT CITY ENGINEER		DATE	

