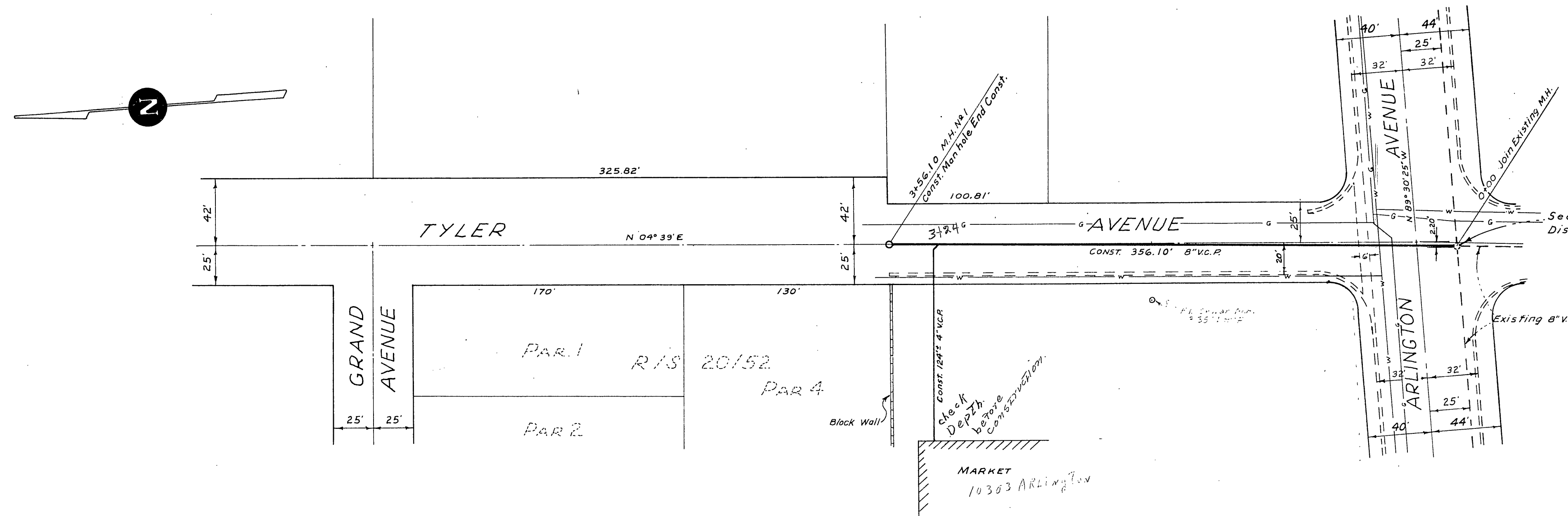


Do Not remove from District office



- GENERAL NOTES:**
1. Location of wyes and House Connection Laterals to be Determined in the Field.
  2. Manhole Frames and Covers to be set to Existing Paving Grades.

APPROVED \_\_\_\_\_, 19\_\_\_\_ APPROVED \_\_\_\_\_, 19\_\_\_\_  
 LA SIERRA COMMUNITY SERVICES DISTRICT RIVERSIDE COUNTY ROAD COMMISSIONER  
 By \_\_\_\_\_ DEPUTY

REVISIONS	DATE	BY

LA SIERRA COMMUNITY SERVICES DISTRICT  
 SEWER EXTENSION TYLER AVENUE  
 NORTH OF ARLINGTON AVENUE.

SCALE 1" = 50'  
 DATE January 1962  
 DRAWN Boyd  
 TRACED  
 CHECKED  
 F.B. 482/2-4 RE 9876

ALBERT A. WEBB ASSOCIATES  
 CIVIL ENGINEERS  
 RIVERSIDE CALIFORNIA

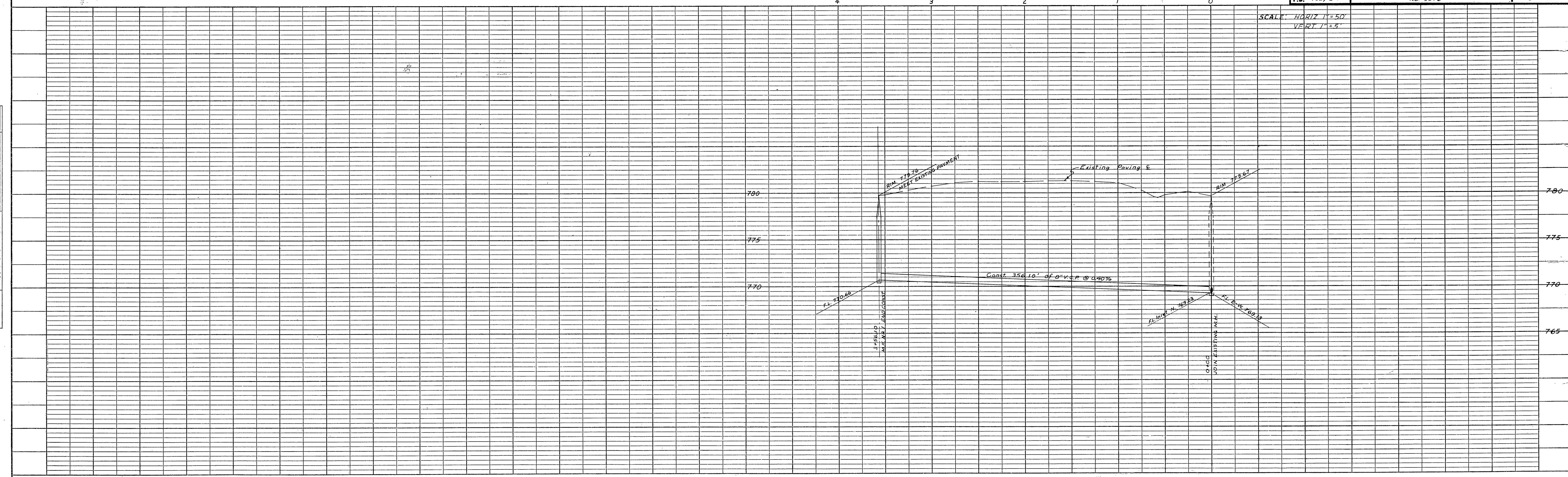
W.O. 62-21  
 SHEET 1  
 OF 1 SHEETS  
 DWG. NO. 62-21

Bids Will be Approved,  
 And Contractor will be  
 Paid by:  
 William F. Goette  
 10311 Arlington Ave  
 Phone: OV-8-0993  
 d.d.

Inspection Charges: Use #1-VCP, wedge-lock joint

QUANTITY ESTIMATE	
21.37	8" Vitrified Clay Pipe 356.10 L.F.
7.24	4" Vitrified Clay Pipe 126.00 L.F.
N.C.	8"x4" Wyes 1 EA.
5.00	Manhole 1 EA.
10.00	Plan Check.
4.00	House Permit Fee
\$47.81	Total charges to Contractor

B.M. Elev. 780.16 1/4" Iron Pipe Intersection  
 of TYLER AVE. & ARLINGTON AVE.



PLAN  
 SURVEYED \_\_\_\_\_  
 NOTE BOOK \_\_\_\_\_  
 ALIGNMENT CHECKED \_\_\_\_\_  
 RT. OF WAY CHECKED \_\_\_\_\_  
 NO. \_\_\_\_\_

PROFILE  
 SURVEYED \_\_\_\_\_  
 NOTE BOOK \_\_\_\_\_  
 GRADES CHECKED \_\_\_\_\_  
 B. M. NOTED \_\_\_\_\_  
 STRUCTURE NOTATIONS CHECKED \_\_\_\_\_  
 NO. \_\_\_\_\_