

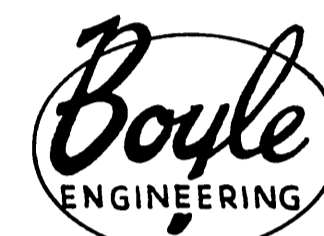
IMPROVEMENT PLANS FOR SANITARY SEWERS

ASSESSMENT DISTRICT NO. 2

LA SIERRA COMMUNITY SERVICES DISTRICT

COUNTY OF RIVERSIDE STATE OF CALIFORNIA

PREPARED IN THE OFFICE
OF



CONSULTING ENGINEERS

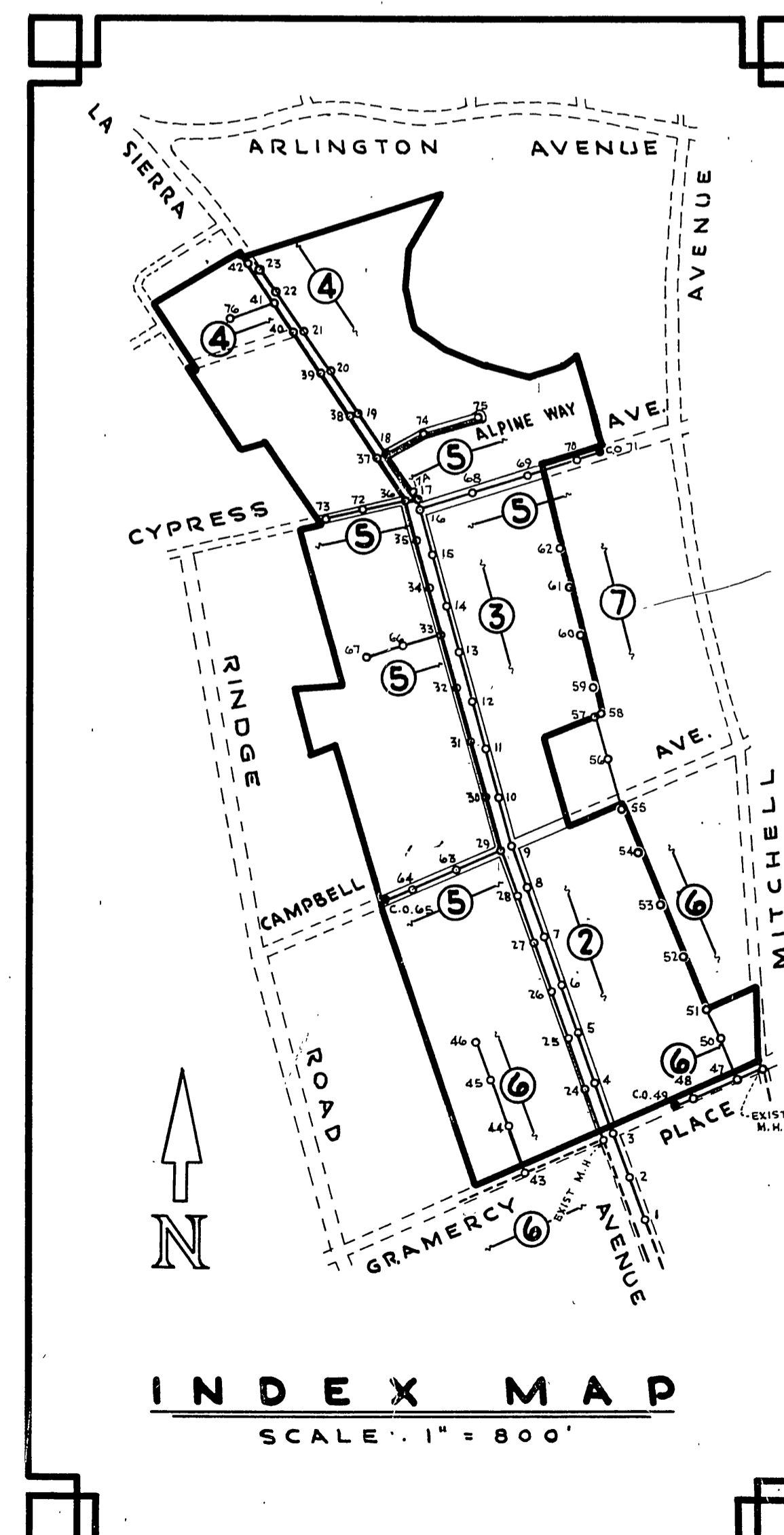
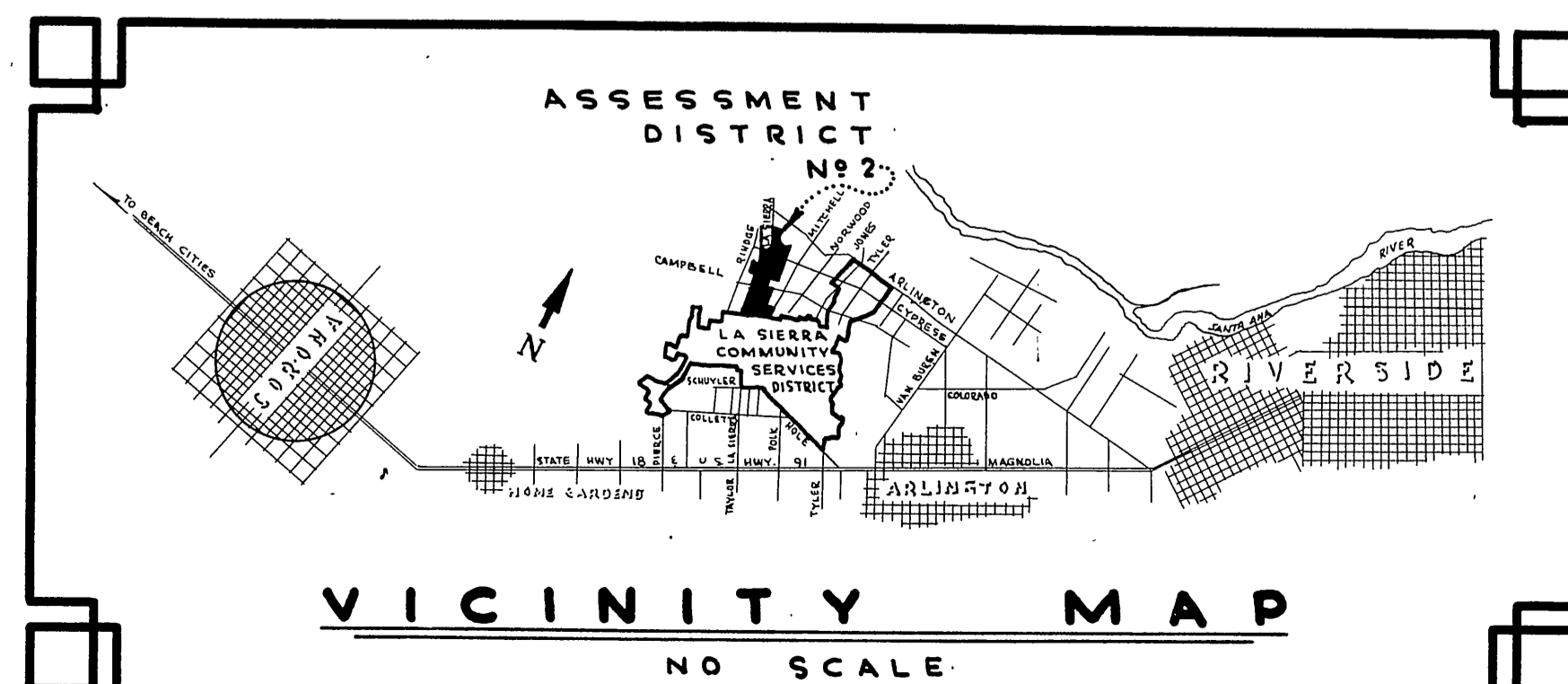
331 SPURGEON BUILDING
SANTA ANA, CALIFORNIA
PHONE: KIMBERLY 7-4471

DIRECTORS OF LA SIERRA COMMUNITY SERVICES DISTRICT

K.F. AMBS, PRESIDENT
GEORGE ALLEN
WILLIAM LIGHTFELDT
KIETH RICH
RICHARD SEIDLER

ESTIMATED QUANTITIES

1. 8" VCP SEWER ----- 21,660 L.F.
2. STANDARD MANHOLE (73) ----- 600 V.F.
3. STANDARD CLEANOUT (3) ----- 23 V.F.
4. 4" VCP HOUSE CONNECTION ----- 2,120 L.F.
5. 6" VCP CHIMNEY ----- 20 V.F.



A P P R O V A L S

APPROVED BY THE LA SIERRA COMMUNITY SERVICES DISTRICT THIS _____ DAY OF _____, 1959.

K.F. AMBS, PRESIDENT

APPROVED THIS 20TH DAY OF October, 1959.

Edwin H. Finster
EDWIN H. FINSTER, C.E. 8624
BOYLE ENGINEERING

N O T E

THE LA SIERRA COMMUNITY SERVICES DISTRICT IS SERVED WITH THE FOLLOWING UTILITIES:
TWIN BUTTES WATER COMPANY, LA SIERRA ARLINGTON MUTUAL WATER COMPANY, LA SIERRA CITIZENS DOMESTIC WATER COMPANY, ARLINGTON SOUTHERN CALIFORNIA EDISON COMPANY SOUTHERN CALIFORNIA GAS COMPANY PACIFIC TELEPHONE AND TELEGRAPH COMPANY
SEVERAL PRIVATE WATER SUPPLIES OPERATE IN THIS AREA.

IT SHALL BE THE RESPONSIBILITY OF THE CONTRACTOR TO DETERMINE THE LOCATION OF ALL EXISTING UTILITIES.

B E N C H M A R K

RIVERSIDE COUNTY BENCH MARK NUMBER 13 CHISELLED CROSS ON CORNER CONCRETE WALK ON NORTHEAST CORNER OF LA SIERRA AVENUE AND GRAMERCY PLACE.
ELEVATION = 740.46

George M. Allen
Jan 3/61

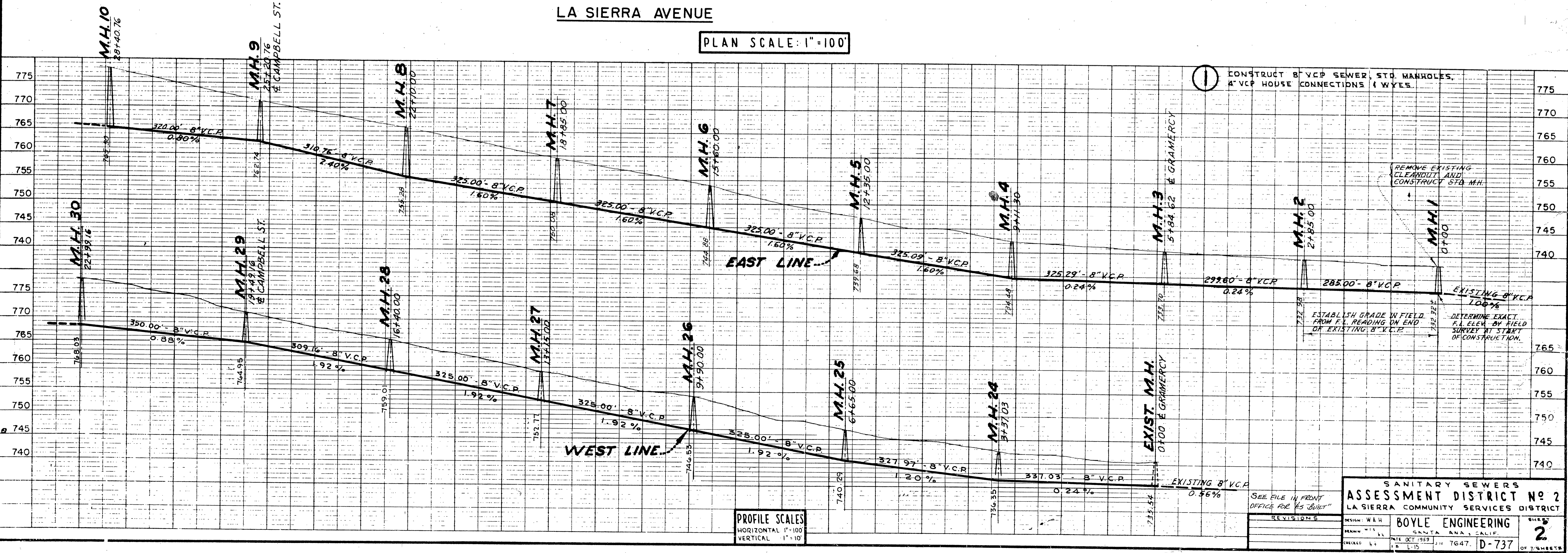
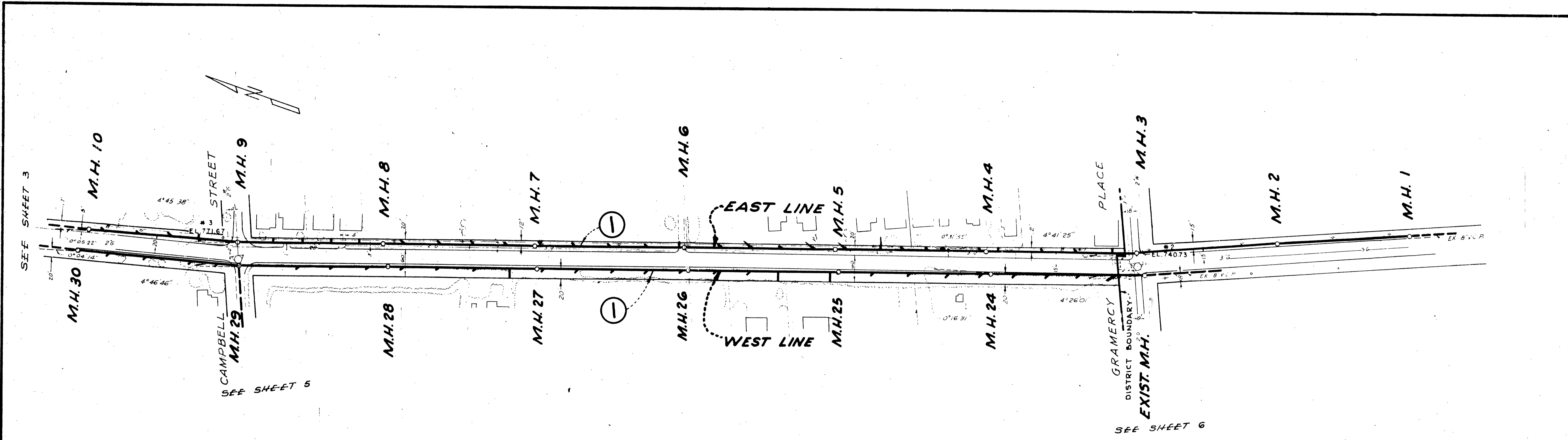
SEE FILE IN FRONT OFFICE FOR "AS BUILT"

REVISIONS		DESIGN W.A.H.		DRAWN b.k.		CHECKED b.t.		DATE OCT. 1959		J.N. 7647		D-737		SHEET 1 OF 7 SHEETS	
		BOYLE ENGINEERING		SANTA ANA, CALIF.											

S-478A

PLAN
 SURVEYED BY
 DATE
 NOTE BOOK ALIGNMENT CHECKED
 RT. OF WAY CHECKED
 NO.

PROFILE
 DATE
 BY
 PLOTTED
 CHECKED
 NOTE BOOK
 SUPPLEMENTARY NOTES CHECKED
 NO.



PLAN SCALE: 1" = 100'

PROFILE SCALES
 HORIZONTAL 1" = 100'
 VERTICAL 1" = 10'

① CONSTRUCT 8" V.C.P. SEWER, STD. MANHOLES, 4" V.C.P. HOUSE CONNECTIONS (1 WYES).

REMOVE EXISTING CLEANOUT AND CONSTRUCT STD. M.H.

ESTABLISH GRADE IN FIELD FROM F.I. READING ON END OF EXISTING 8" V.C.P.

EXISTING 8" V.C.P. 1.00%

DETERMINE EXACT F.I. ELEV. BY FIELD SURVEY AT START OF CONSTRUCTION.

SANITARY SEWERS
 ASSESSMENT DISTRICT NO. 2
 LA SIERRA COMMUNITY SERVICES DISTRICT

DESIGN: WAH
 DRAWN: WLS
 CHECKED: L4

BOYLE ENGINEERING
 SANTA ANA, CALIF.

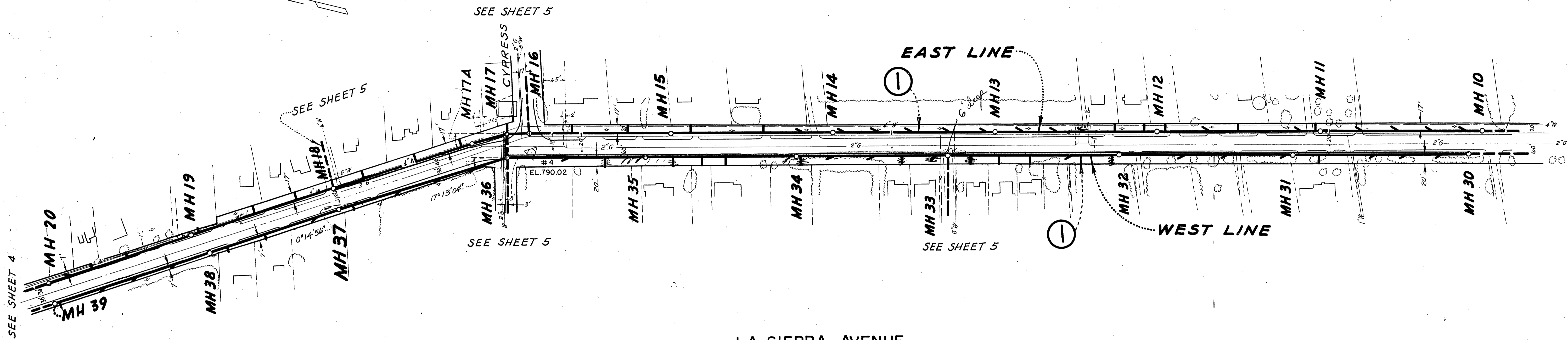
DATE: OCT 1983
 SHEET: 2
 OF 7 SHEETS

SEE FILE IN FRONT OFFICE FOR "AS BUILT"

S-478A

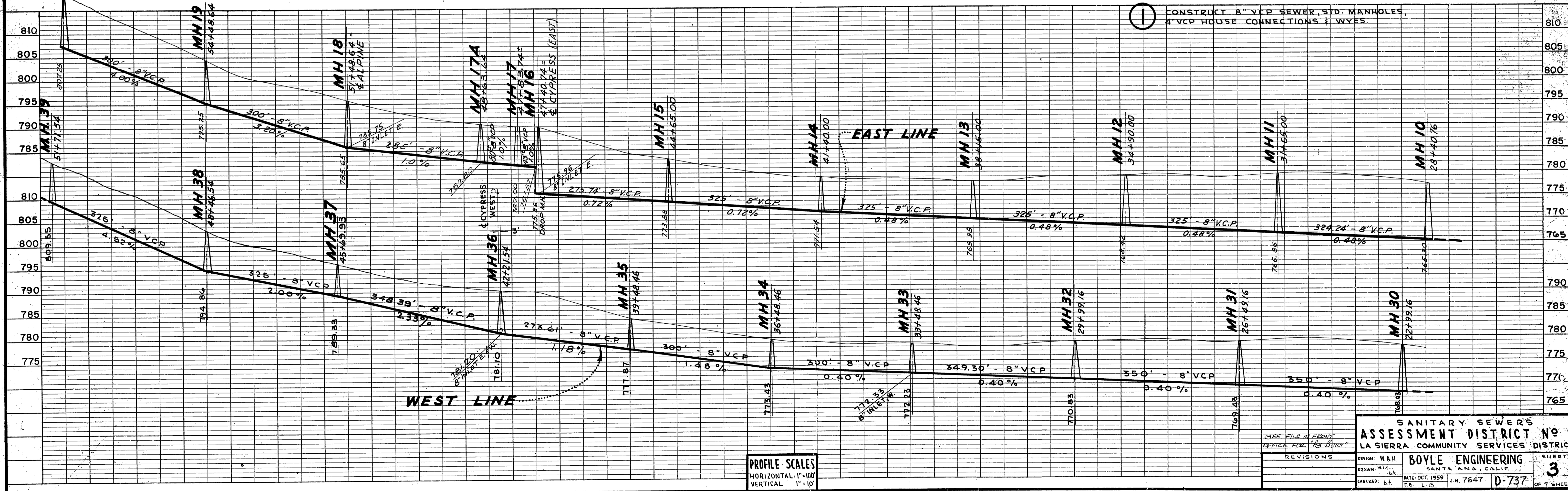
PLAN	SURVEYED	DATE
	PLOTTED	
	CHECKED	
	BY	
	NO.	

PROFILE	SURVEYED	DATE
	PLOTTED	
	CHECKED	
	BY	
	NO.	



LA SIERRA AVENUE

PLAN SCALE: 1"=100'



PROFILE SCALES
HORIZONTAL 1"=100'
VERTICAL 1"=10'

SEE FILE IN FRONT OFFICE FOR "AS BUILT"	
REVISIONS	DESIGN: W.A.H.
	DRAWN: M.L.S.
	CHECKED: L.L.
	DATE: OCT. 1959
	F.B. L-15 J.N. 7647 D-737

SANITARY SEWERS
ASSESSMENT DISTRICT NO 2
LA SIERRA COMMUNITY SERVICES DISTRICT

BOYLE ENGINEERING
SANTA ANA, CALIF.

SHEET 3
OF 7 SHEETS

S-478A

MISSING SHEET

