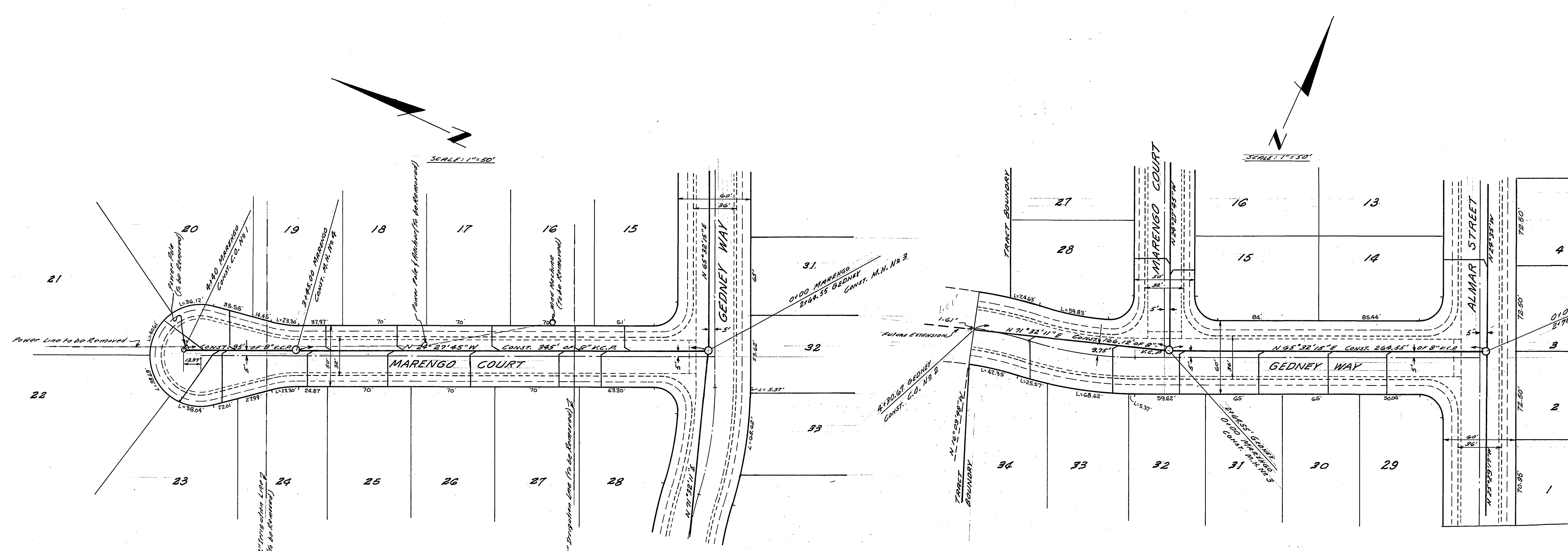


PLAN SURVEYED BY DATE
 PLOTTED BY
 NOTE BOOK NO. CHECKED BY
 RT. OF WAY CHECKED BY

PROFILE SURVEYED BY DATE
 PLOTTED BY
 NOTE BOOK NO. CHECKED BY
 STRUCTURE NOTATIONS CHECKED BY



REVISIONS	DATE	BY
REVISED PAVING ELEV. & LOWERED SEWER	1-2-61	dwr

TRACT NO. 2280

SEWER PLAN AND PROFILE

GEDNEY WAY & MARENGO COURT

SCALE: 1"=50'
 DATE: AUG. 1961
 DRAWN: dwt/40
 TRACED
 CHECKED: REC
 F.D. 431

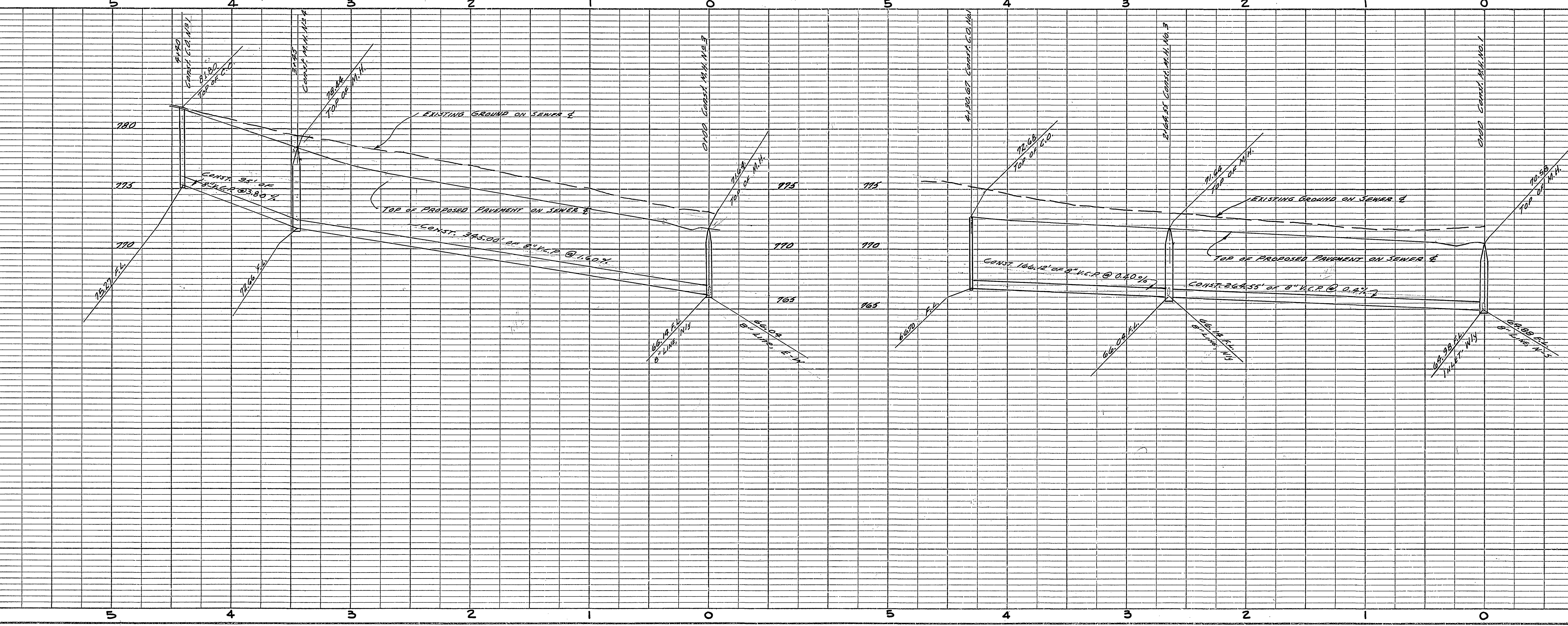
ALBERT A. WEBB ASSOCIATES
 CIVIL ENGINEERS
 RIVERSIDE, CALIFORNIA
 R.E. 9876

W.O. 61-197
 SHEET
2
 OF 2 SHEETS
 DWG. NO. 61-197 B

BENCH MARK:
 R.R. SIDGE IN RR #35204-N.M.M.
 CORNER OF KING RD. & HONOLULU AVE.
 R.S. 4214 ELEV. 758.23'

SCALE:
 HORIZ. 1"=30'
 VERT. 1"=5'

PROPERTY OF
 COUNTY OF RIVERSIDE
 Office of the Road Commissioner



George M. Webb Associates
 November 16/61
 DWG. No. 61-197 B