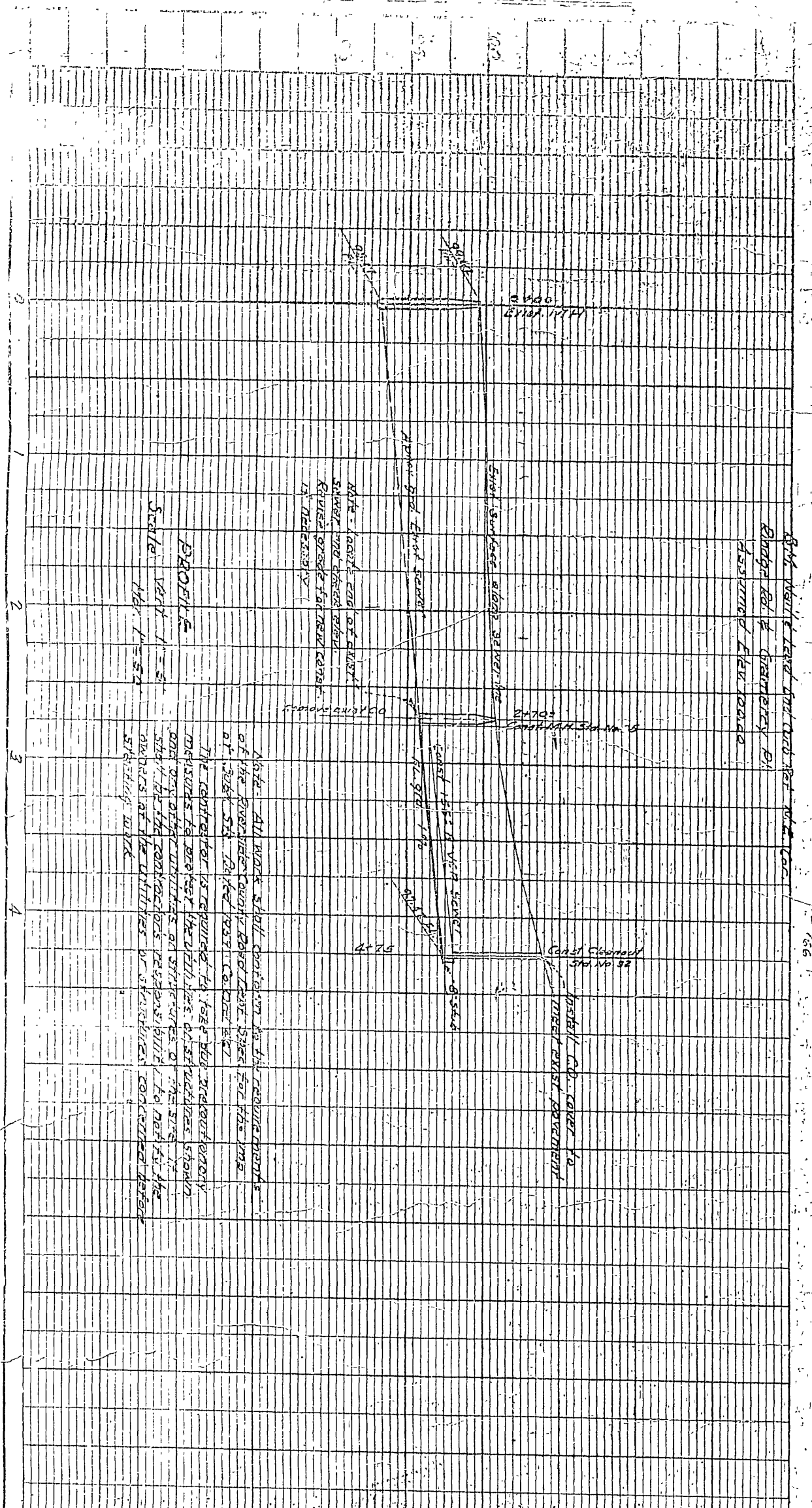
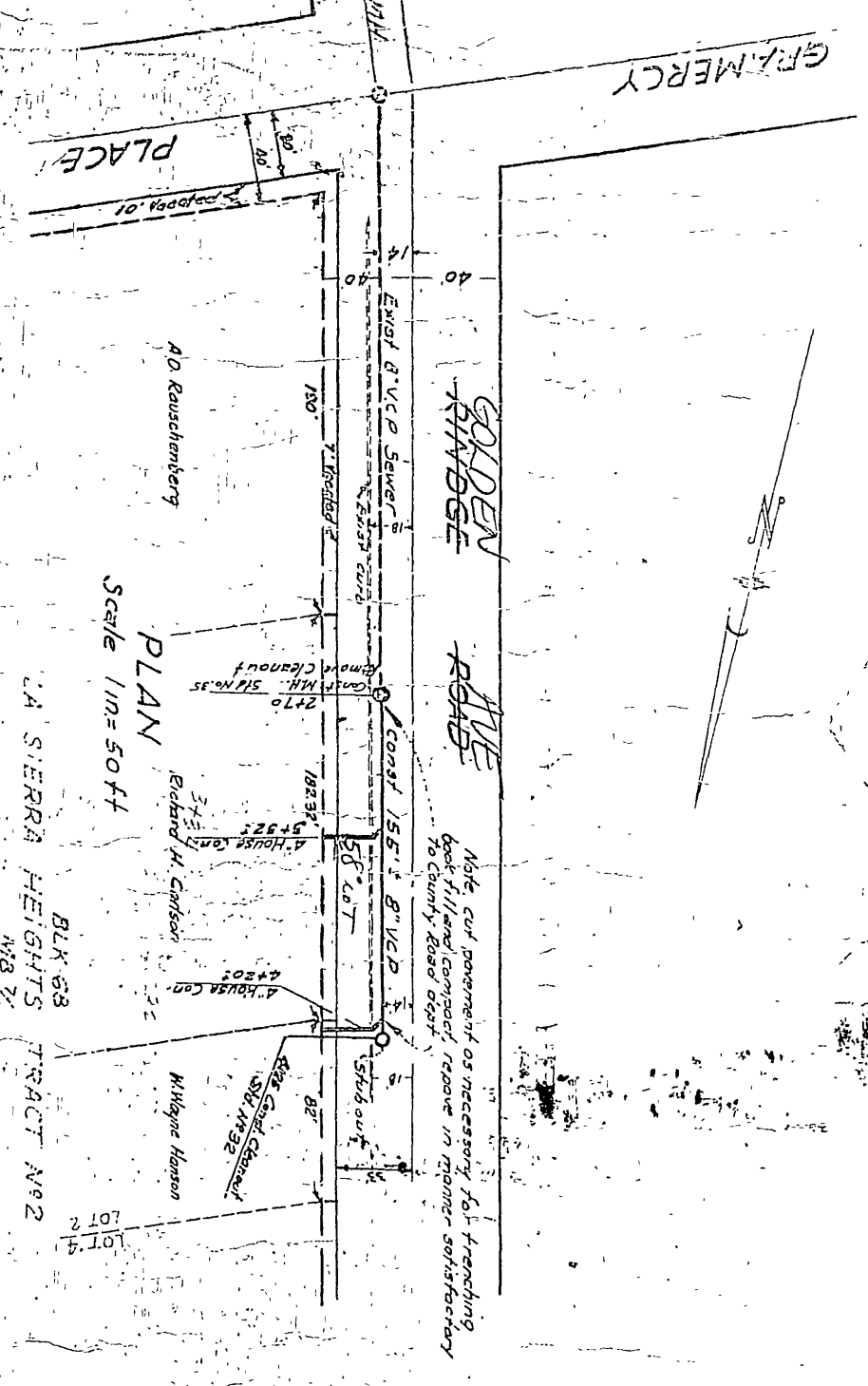


Jan-16-1967  
 McKEE & CRAWLEY  
 Surveyors & Engineers  
 RIVERSIDE, CALIF.

**RINDGE ROAD - SEWER GRADES**  
 North of Gramercy Place - End of sewer 155 ft North.

Sta.	Stake	Grade	Cut	Notes
2+70 E	100.76	95.81	4.97	Const. MH.
End Sewer				
+200	101.18	95.17	5.01	
+225	101.57	96.42	5.15	Note - Nail in this set
+50	102.05	96.67	5.38	in pipe, 5' Lt. (West) of
+75	102.63	96.92	5.71	SEWER
+100	103.23	97.17	6.06	See Level BK #18
+25	103.94	97.42	6.52	Const. Cleanout



FILE WITH S-494

LA SHERNE'S CORP. APPROVAL  
 JEROME AUSTIN  
 APPROVED 1/13/67  
 M.B. 7 6/1/67

S-494