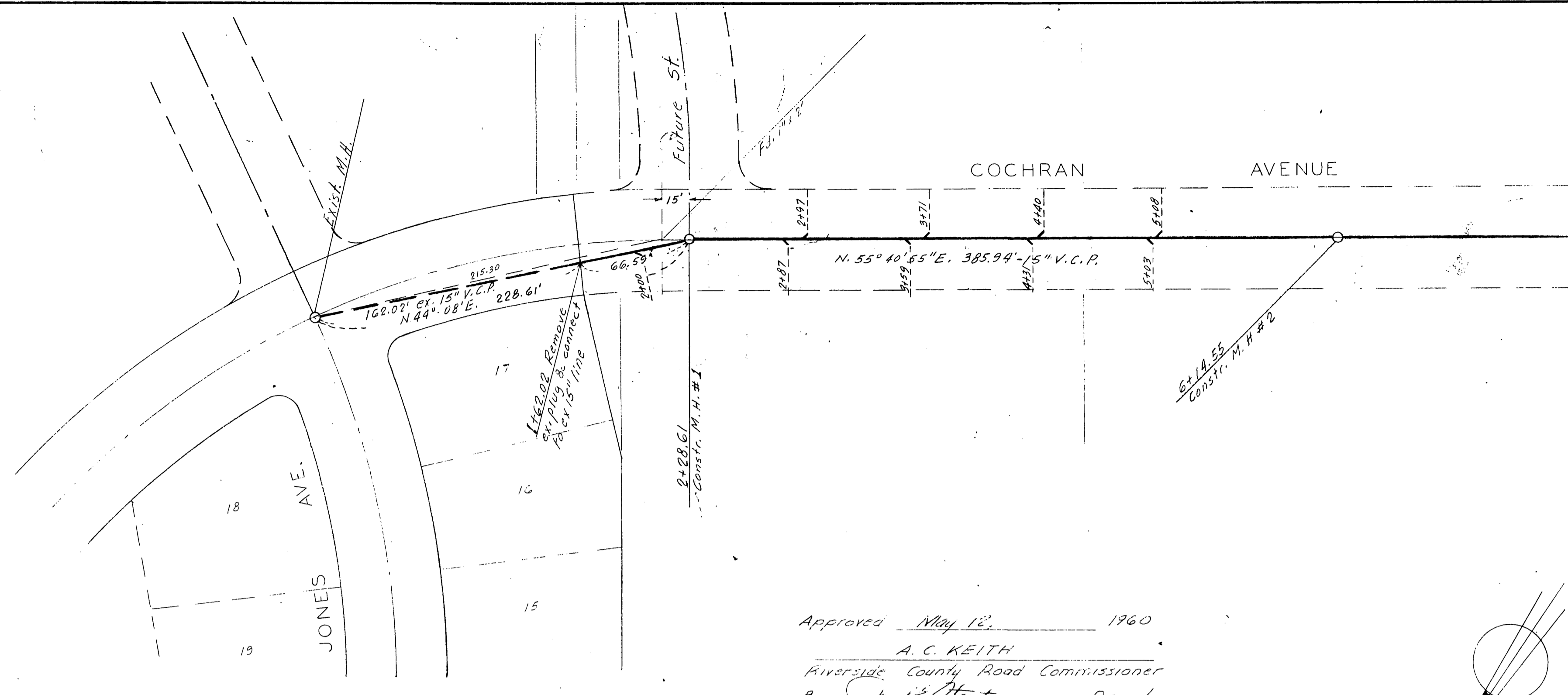


DATE	12-57
BY	H.M.
PLAN	NO. 222
REVISIONS	RT. OF WAY CHECKED
NOTE BOOK	ALIGNED CHECKED

DATE	12-57
BY	H.M.
PROFILE	NO. 222
REVISIONS	STRUCTURE NOTATIONS CHD.
NOTE BOOK	GRADES CHECKED



**QUANTITY ESTIMATE**

15" Vitrified Clay Pipe	3,445 lin. ft.
12" Vitrified Clay Pipe	2,699 lin. ft.
10" Vitrified Clay Pipe	3,400 lin. ft.
8" Vitrified Clay Pipe	2,594 lin. ft.
Standard Manholes	34
Standard Cleanouts	2
15"x4" V.C.P. Wyes	52
8"x4" V.C.P. Wyes	25
Automatic Lift Station	1
24" I.D. x 1/4" Welded Steel Pipe	98 lin. ft.
18" I.D. x 1/4" Welded Steel Pipe	326 lin. ft.

Approved May 12 1960  
 A. C. KEITH  
 Riverside County Road Commissioner  
 By [Signature] Deputy

La Sierra Community Services District  
 Approved April 27 1960  
 By [Signature]

NOTE:-  
 Wyes from sta 2+00 to 5+08  
 to be provided  
 Laterals to be a future installation

M.H. Stations revised - Add 1 M.H. on Cochran	2-10-60	H.M.
<b>REVISIONS</b>	<b>DATE</b>	<b>BY</b>
TOWN AND COUNTRY ESTATES UNIT NO. 4.		
SEWER PLAN AND PROFILE		
PROPOSED		
COCHRAN AVENUE		
SCALE 1/4" = 50'	ALBERT A. WEBB ASSOCIATES	
DATE 12-21-59	CIVIL ENGINEERS	
DRAWN H.L.M.	RIVERSIDE CALIFORNIA	
TRACED H.L.M.		
CHECKED		
E.B. 92816		

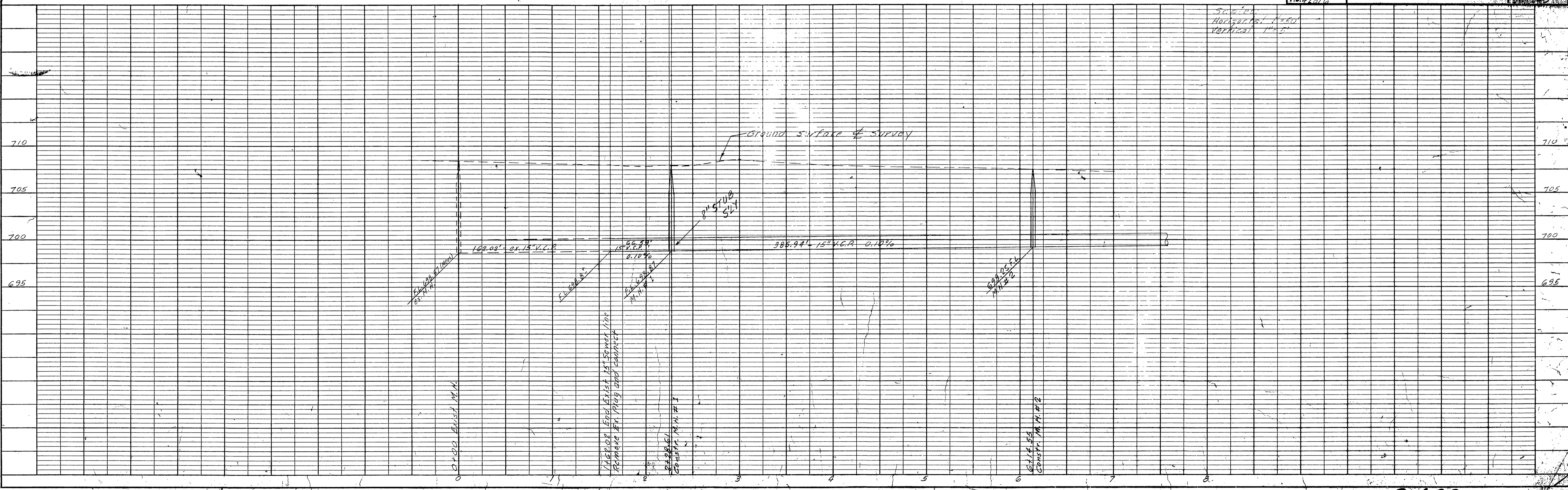
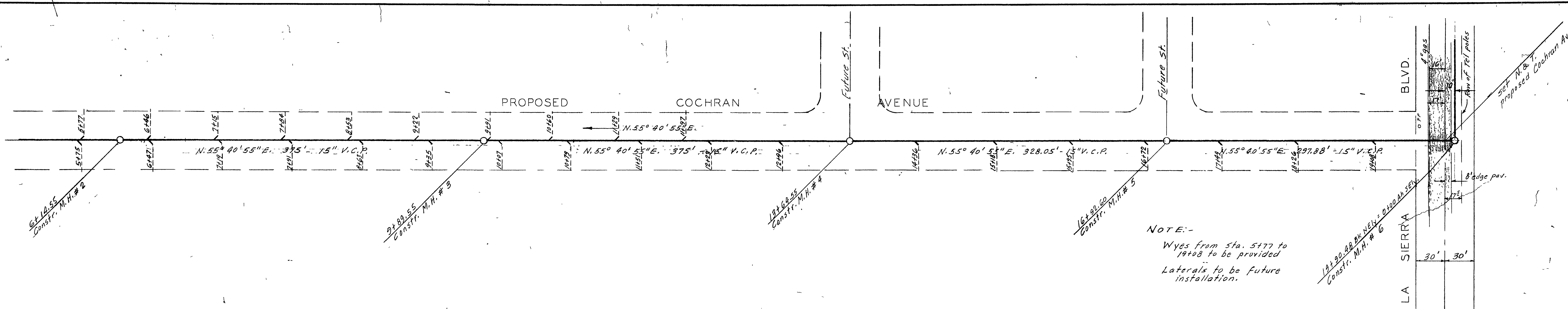


PLATE 1 - PLAN - PROFILE O.P.R. & R.E. STANDARD  
 KEUFFEL & ESSER CO., NEW YORK.

PLAN	SURVEYED	DATE
	PLOTTED	BY
NOTE BOOK NO. 5228	BY	DATE
	RT. OF WAY CHECKED	BY



NOTE:-  
Wyes from sta. 577 to 1908 to be provided  
Laterals to be future installation.

La Sierra Community Services District  
Approved \_\_\_\_\_ 19\_\_\_\_  
By \_\_\_\_\_

M.H. Stations revised - Add 1 M.H. on Cochran		2-10-60	RM
REVISIONS		DATE	BY
TOWN AND COUNTRY ESTATES UNIT NO 4			
SEWER PLAN AND PROFILE			
PROPOSED COCHRAN AVENUE			
SCALE 1"=50'	ALBERT A. WEBB ASSOCIATES		W.O. 59-245
DATE 12-21-59	CIVIL ENGINEERS		SHEET 2
DRAWN H.L.M.	RIVERSIDE CALIFORNIA		OF 11 SHEETS
TRACED H.L.M.			DWG. NO. 54-245
CHECKED F.B. 228			

PROFILE	SURVEYED	DATE
	GRADES CHECKED	BY
NOTE BOOK NO. 5228	BY	DATE
	STRUCTURE NOTATION CHKD.	BY

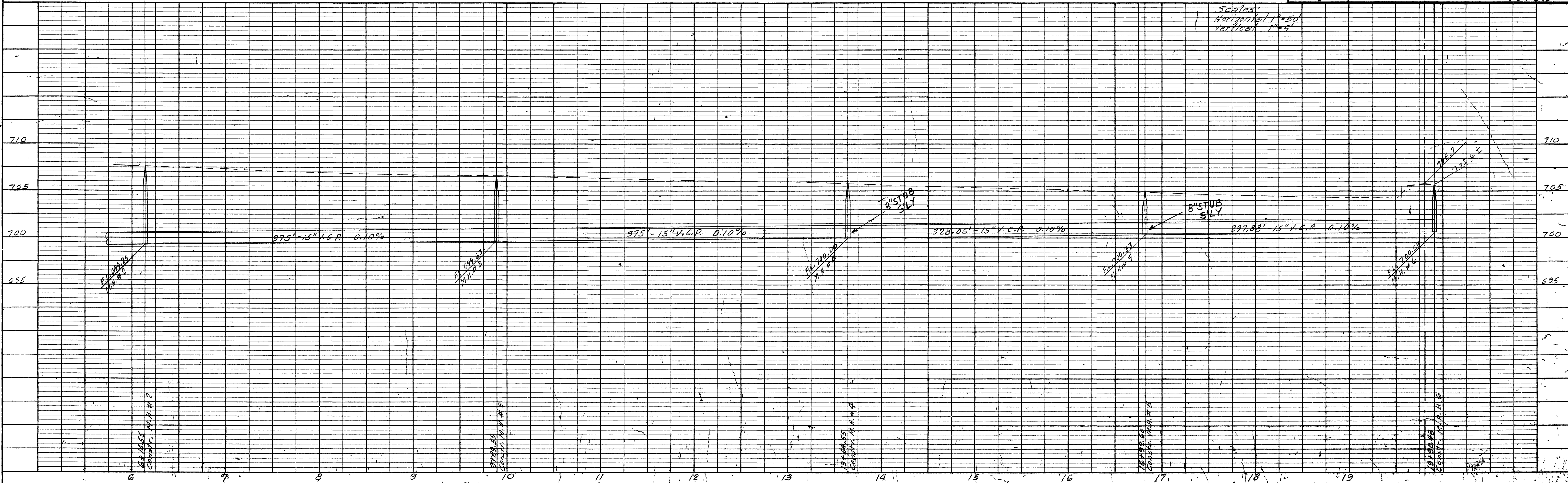
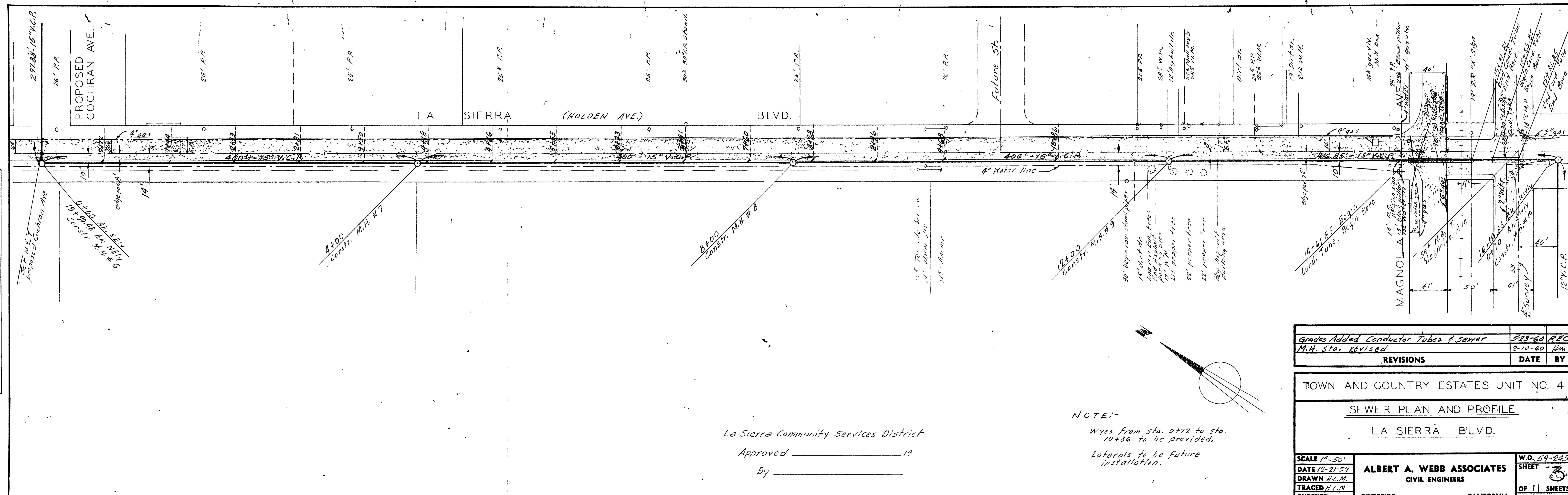


PLATE 1 - PLAN - PROFILE O.P.R. & R.E. STANDARD  
KELFEL & ESSER CO., NEW YORK

S-496 737A

PLAN	DATE
BY	
NO. 422	
NO. 422	
NO. 422	

PROFILE	DATE
BY	
NO. 422	
NO. 422	
NO. 422	



La Sierra Community Services District  
 Approved \_\_\_\_\_ 19  
 By \_\_\_\_\_

NOTE:-  
 Wyes from sta. 0+72 to sta. 10+86 to be provided.  
 Laterals to be future installation.

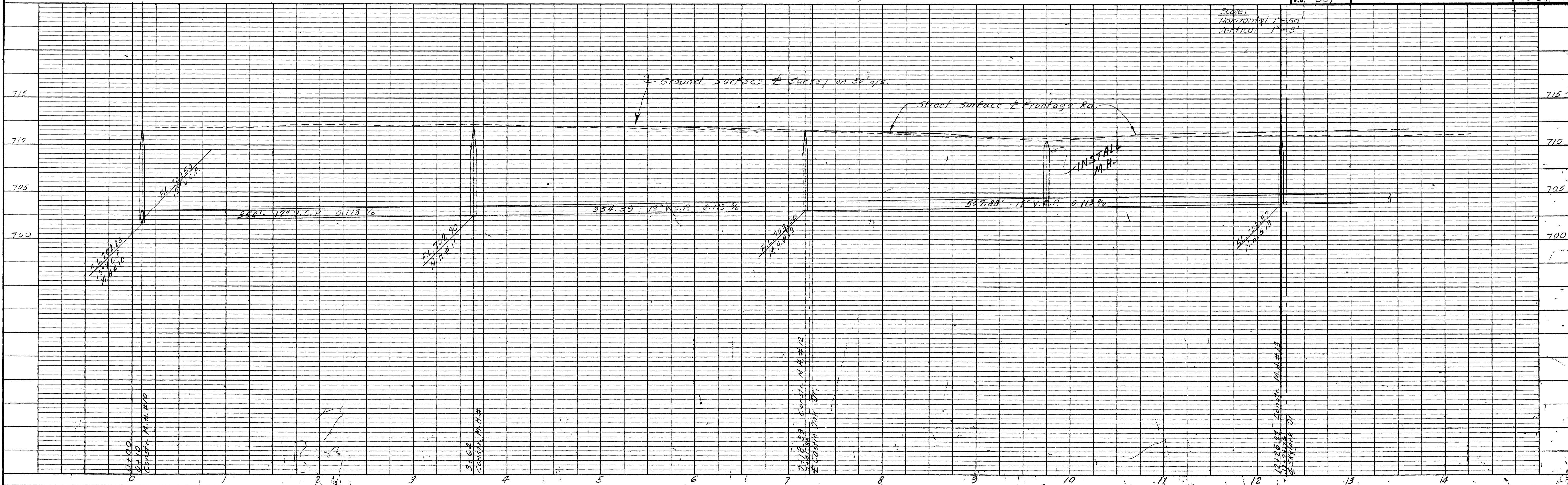
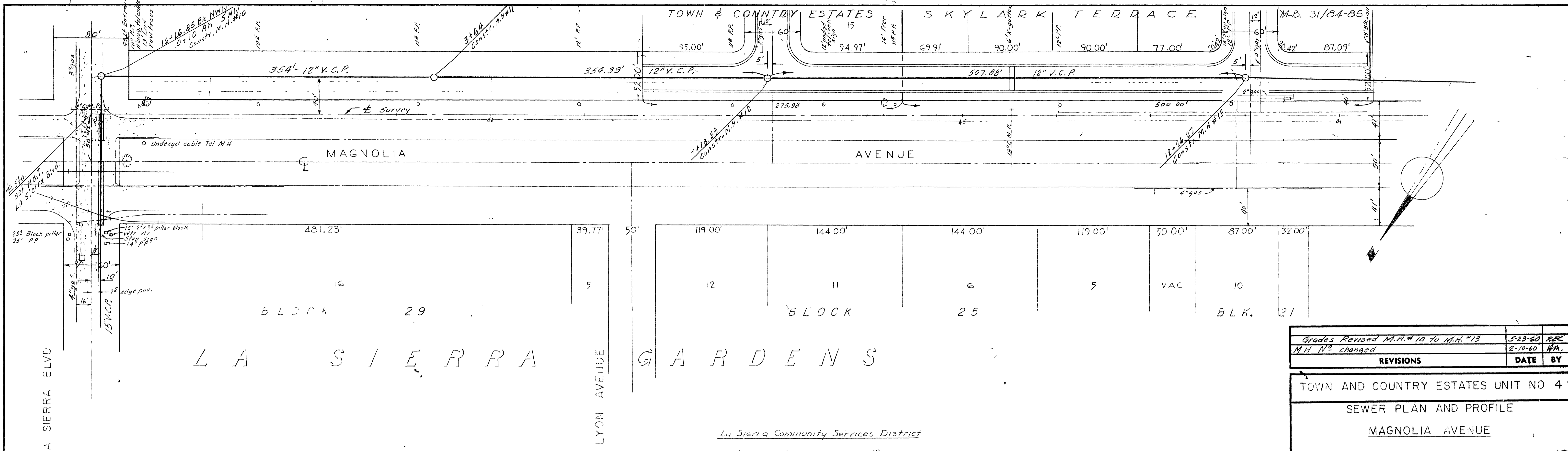
Grades Added Conductor Tubes & Sewer	5-29-60 REC
M.H. sta. revised	2-10-60 Hmc
REVISIONS	DATE BY
TOWN AND COUNTRY ESTATES UNIT NO. 4	
SEWER PLAN AND PROFILE	
LA SIERRA BLVD.	
SCALE 1"=50'	W.O. 59-245
DATE 12-21-59	SHEET
DRAWN H.L.M.	OF 11 SHEETS
TRACED H.L.M.	DWG. NO.
CHECKED	59-245
E.B. 428	
ALBERT A. WEBB ASSOCIATES CIVIL ENGINEERS RIVERSIDE CALIFORNIA	

PLATE 1 - PLAN - PROFILE O.P. & E. STANDARD  
 KEUFFEL & ESSER CO. NEW YORK

S-496 737-A  
 SHEET 3 OF 11

PLAN  
 SURVEYED BY: H.W.  
 DATE: 12-59  
 NOTE BOOK GRADES CHECKED: L.G.  
 NO. 223  
 STRUCTURE NOTATION CHECKED: L.G.  
 RT OF WAY CHECKED: L.G.

PROFILE  
 SURVEYED BY: H.W.  
 DATE: 12-59  
 NOTE BOOK GRADES CHECKED: L.G.  
 NO. 223  
 STRUCTURE NOTATION CHECKED: L.G.



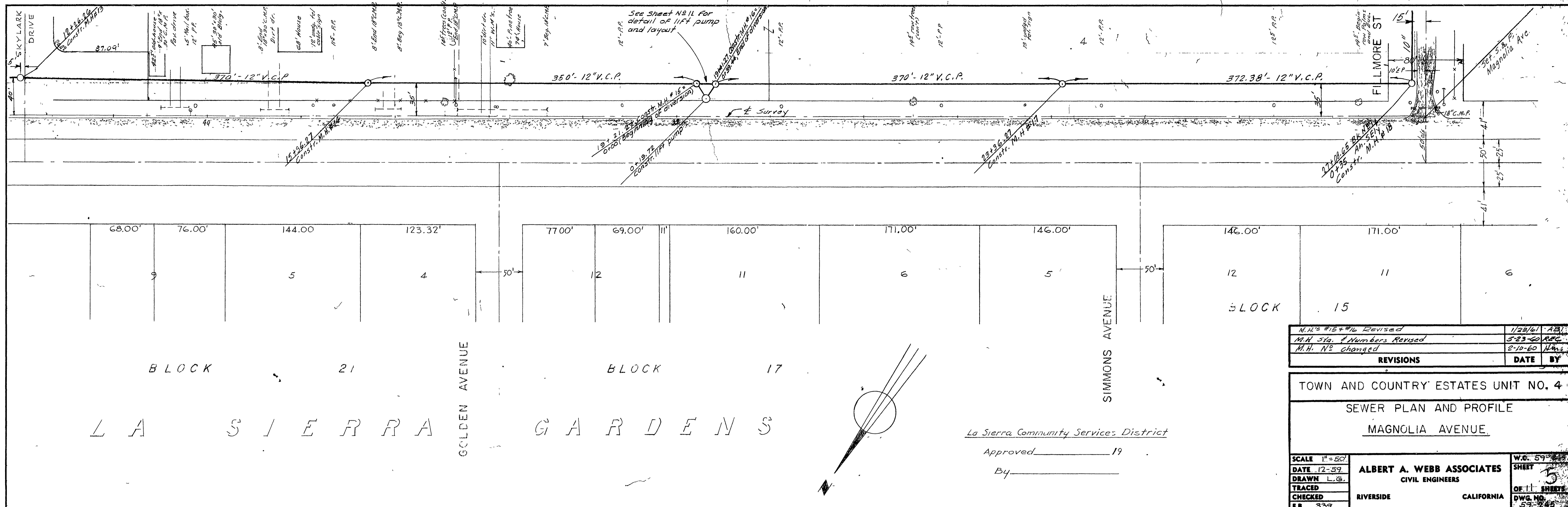
Grades Revised M.H.# 10 to M.H.# 13	5-23-60	R.R.
M.H.# changed	2-10-60	H.W.
REVISIONS		DATE BY
TOWN AND COUNTRY ESTATES UNIT NO 4		
SEWER PLAN AND PROFILE		
MAGNOLIA AVENUE		
SCALE 1" = 50'	DATE 12-59	W.O. 59-4245
DRAWN L.G.	CHECKED F.B.	SHEET 4
TRACED		OF 11 SHEETS
		DWG. NO. 59-245
ALBERT A. WEBB ASSOCIATES CIVIL ENGINEERS RIVERSIDE CALIFORNIA		

PLATE 1 - PLAN - PROFILE OF P & R E STANDARD  
 KEUFFEL & ESSER CO., NEW YORK

S-496 737-F  
 SHEET 4 OF 11

PLAN	SURVEYED	DATE
	PLOTTED	BY
	NOTE BOOK	NO.
	NO. 422	

PROFILE	SURVEYED	DATE
	PLOTTED	BY
	NOTE BOOK	NO.
	NO. 422	



REVISIONS	DATE	BY
M.H. #12 & #16 Revised	1/23/61	ABJ
M.H. 319, 1 Numbers Revised	5-23-60	RJC
M.H. N <sup>o</sup> changed	2-10-60	RM

TOWN AND COUNTRY ESTATES UNIT NO. 4  
SEWER PLAN AND PROFILE  
MAGNOLIA AVENUE

SCALE 1"=50'	W.C. 59
DATE 12-59	SHEET 5
DRAWN L.G.	OF 11 SHEETS
TRACED	DWG. NO. 59-242
CHECKED	
F.B. 339	

ALBERT A. WEBB ASSOCIATES  
CIVIL ENGINEERS  
RIVERSIDE CALIFORNIA

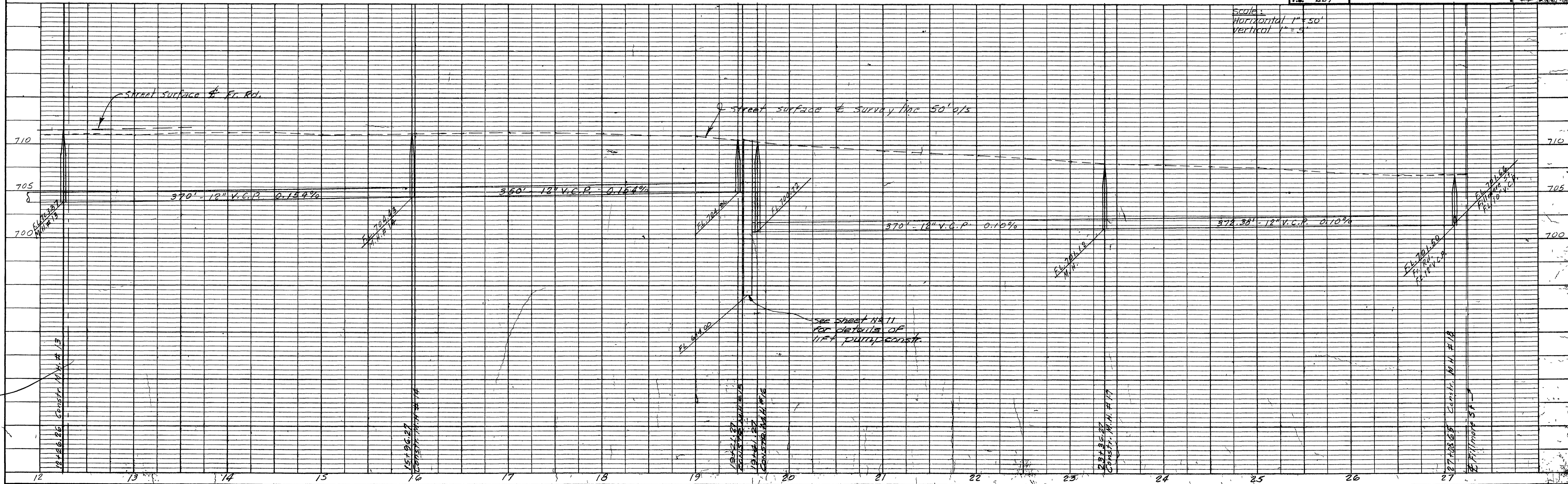
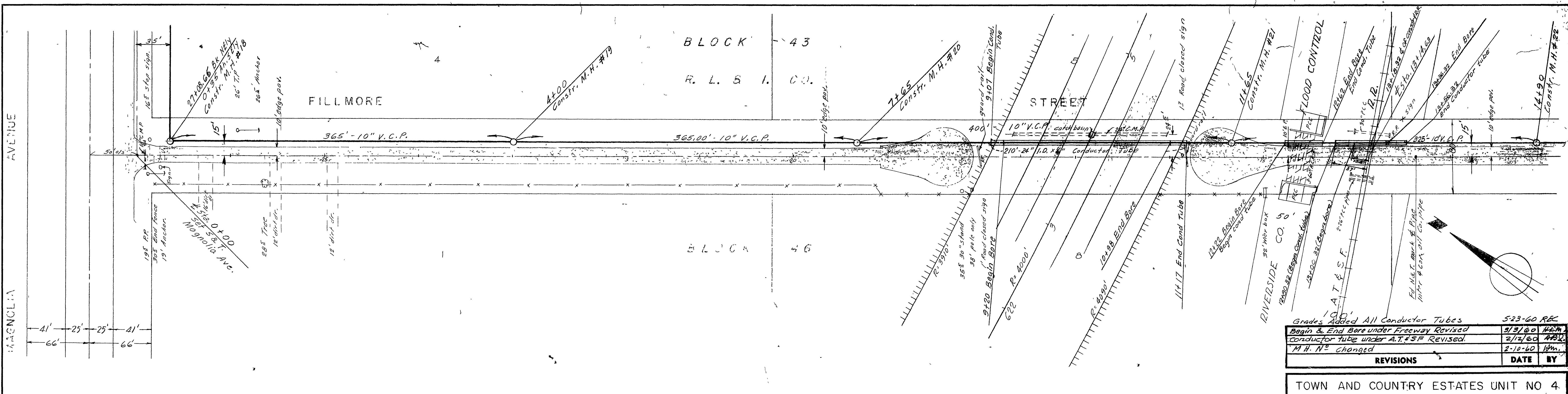


PLATE 1 - PLAN - PROFILE O.P.R. & R.E. STANDARD  
KEUFFEL & ESSER CO., NEW YORK

S-496 737-F

PLAN	DATE
SURVEYED	12-52
NOTE BOOK	12-52
ALIGNMENT	L.G.
BY	L.G.
NO. 422	
RT OF WAY CHECKED	

PROFILE	DATE
SURVEYED	12-52
NOTE BOOK	12-52
GRADES CHECKED	H.M.
BY	H.M.
NO. 422	
STRUCTURE NOT YET CHKD	



REVISIONS	DATE	BY
Grades Added All Conductor Tubes	5-23-60	R.C.
Begin & End Bore under Freeway Revised	9/3/60	H.M.
Conductor tube under A.T.&S.F. Revised	2/12/60	R.B.
M.H. N° changed	2-10-60	H.M.

TOWN AND COUNTRY ESTATES UNIT NO. 4  
 SEWER PLAN AND PROFILE  
 FILLMORE STREET

SCALE	1" = 50'	W.G. 59-1245
DATE	12-52	SHEET
DRAWN	L.G.	6
TRACED		OF 11 SHEETS
CHECKED		DWG. NO.
E.R. 339		59-045
ALBERT A. WEBB ASSOCIATES		
CIVIL ENGINEERS		
RIVERSIDE	CALIFORNIA	

La Sierra Community Services District  
 Approved \_\_\_\_\_ 19\_\_\_\_  
 By \_\_\_\_\_

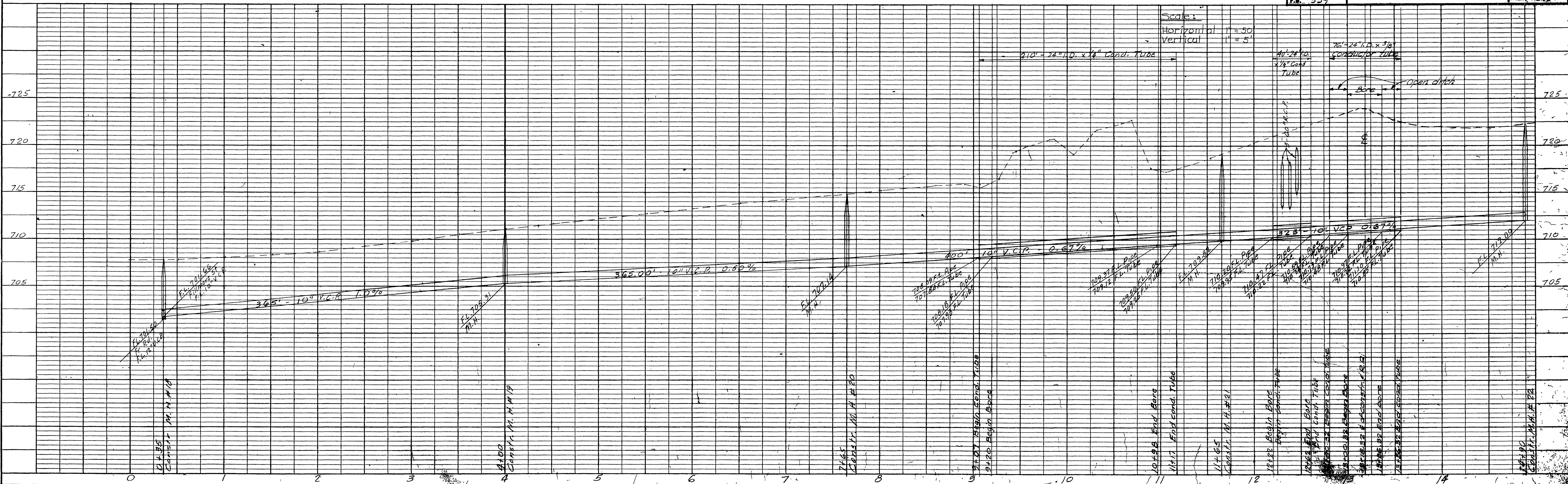
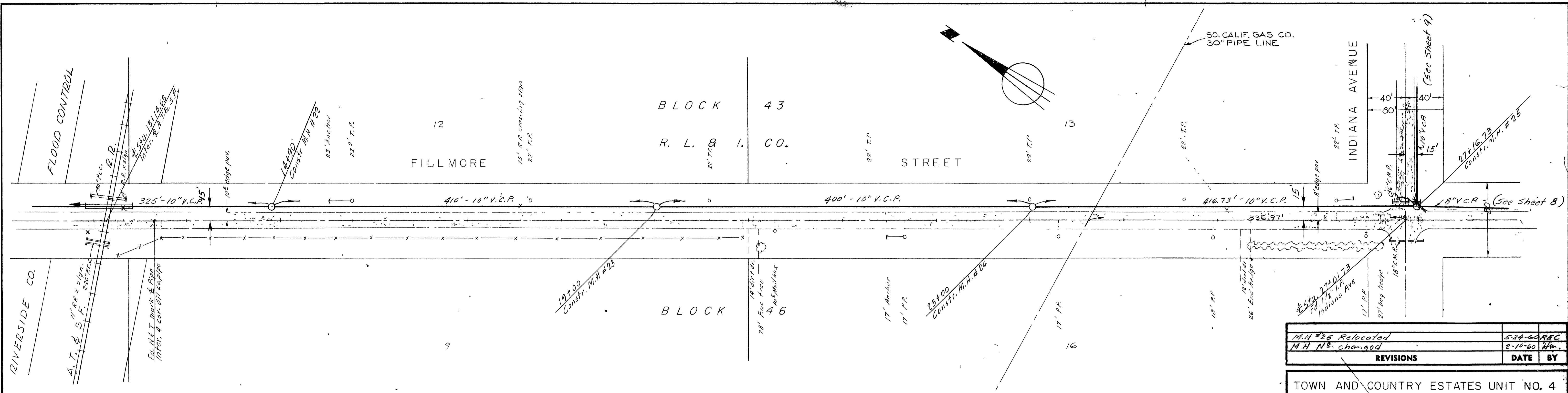


PLATE 1 - PLAN - PROFILE C.P. R. & E. STANDARD  
 KEUFFEL & ESSER CO., NEW YORK

PLAN	SUBMITTED	7/20/59	BY	L.G.	DATE	7-20-59
	NOTE BOOK	ALIGNED CHECKED				
	NO. 423	RT OF WAY CHECKED				

PROFILE	SUBMITTED	7/20/59	BY	L.G.	DATE	7-20-59
	NOTE BOOK	GRADES CHECKED				
	NO. 423	B.M. NOTED				
	12-18-77	STRUCTURE NOTATIONS CH'VD				



La Sierra Community Services District  
 Approved \_\_\_\_\_ 19\_\_\_\_  
 By \_\_\_\_\_

M.H. #25 Relocated	5-24-60 REC
M.H. #2 changed	2-10-60 H.M.
REVISIONS	DATE BY
TOWN AND COUNTRY ESTATES UNIT NO. 4	
SEWER PLAN AND PROFILE	
FILLMORE STREET	
SCALE 1" = 50'	W.D. 59-245
DATE 12-59	SHEET 7
DRAWN L.G.	OF 11 SHEETS
TRACED	DWG. NO. 59-245
CHECKED	
P.E. 339	
ALBERT A. WEBB ASSOCIATES	CIVIL ENGINEERS
RIVERSIDE	CALIFORNIA

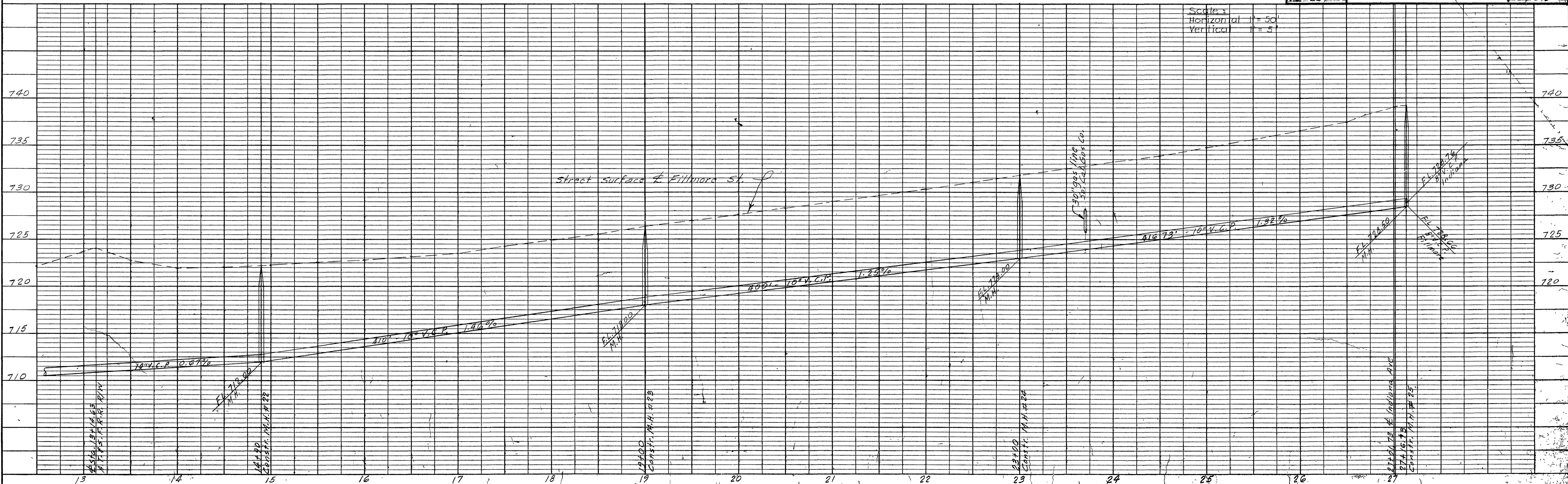
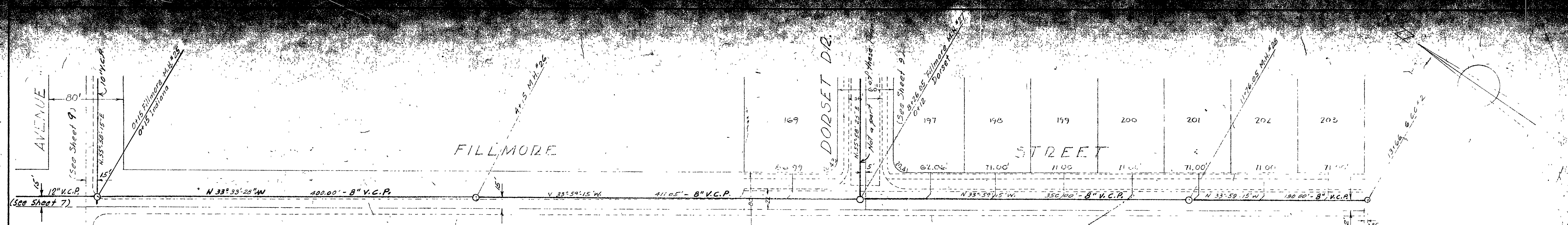


PLATE 1 - PLAN - PROFILE OF P. R. & R. E. STANDARD  
 KEUFFEL & ESSER CO., NEW YORK

S-496 737-A

DATE  
BY  
DRAWN  
CHECKED  
NOTED  
NO.

DATE  
BY  
DRAWN  
CHECKED  
NOTED  
NO.



La Sierra Community Services District  
Approved \_\_\_\_\_  
By \_\_\_\_\_

House Connections shown on this sheet  
are not a part of these Plans.

Manhole #25 Relocated & Grades Revised	5-24-60	REG
REVISIONS	DATE	BY
TOWN AND COUNTRY ESTATES UNIT NO. 4		
SEWER PLAN AND PROFILE		
FILLMORE STREET		
SCALE 1" = 50'	DATE 12-59	W.O. 59-245
DRAWN L.G.	CHECKED	SHEET 8
ALBERT A. WEBB ASSOCIATES	CIVIL ENGINEERS	OF 11 SHEETS
RIVERSIDE	CALIFORNIA	DWG. NO. 59-245
F.B. 339		

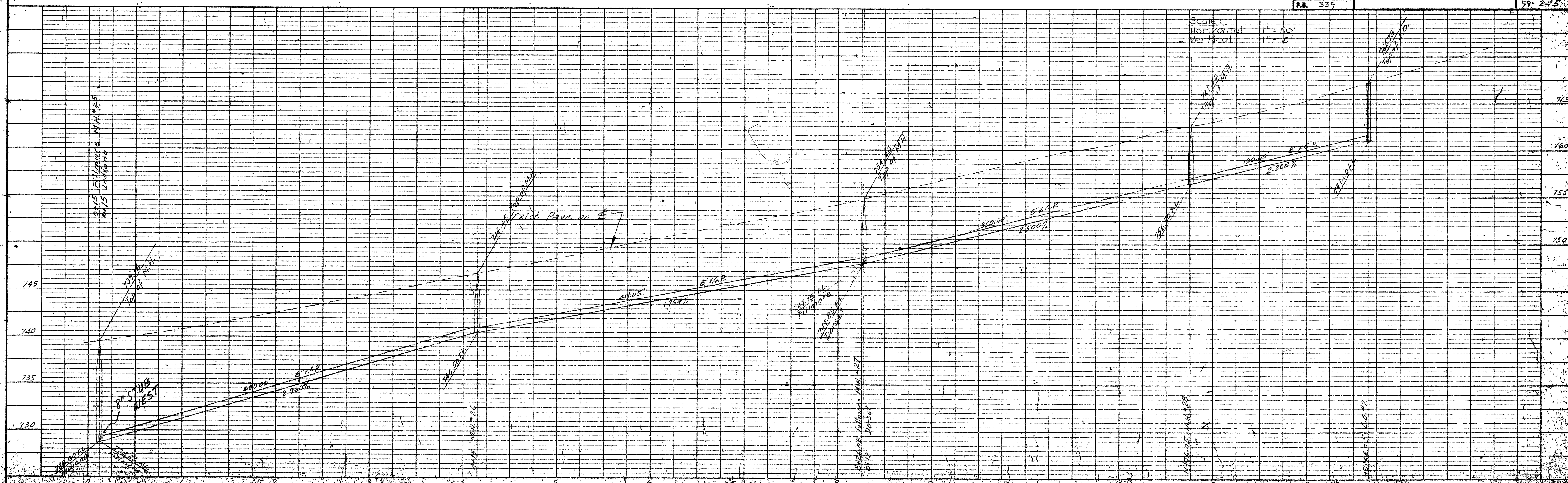


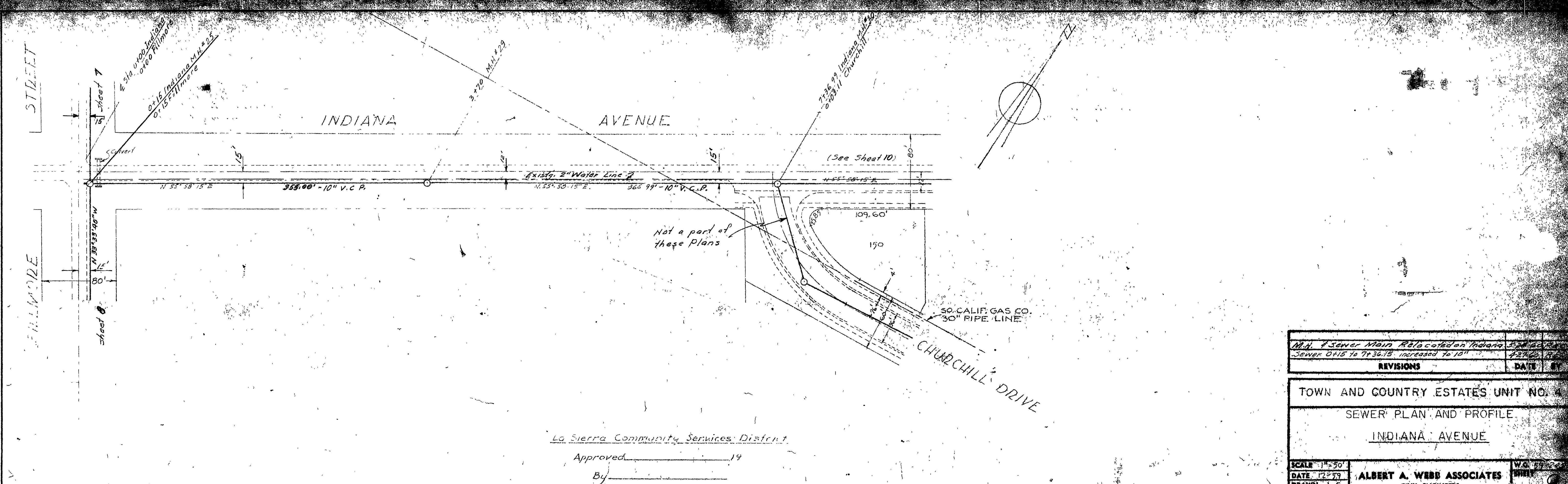
PLATE I - PLAN, PROFILE, & P.R.I.'S STANDARD  
KEUFFEL & ESSER, NEW YORK

S-496 731



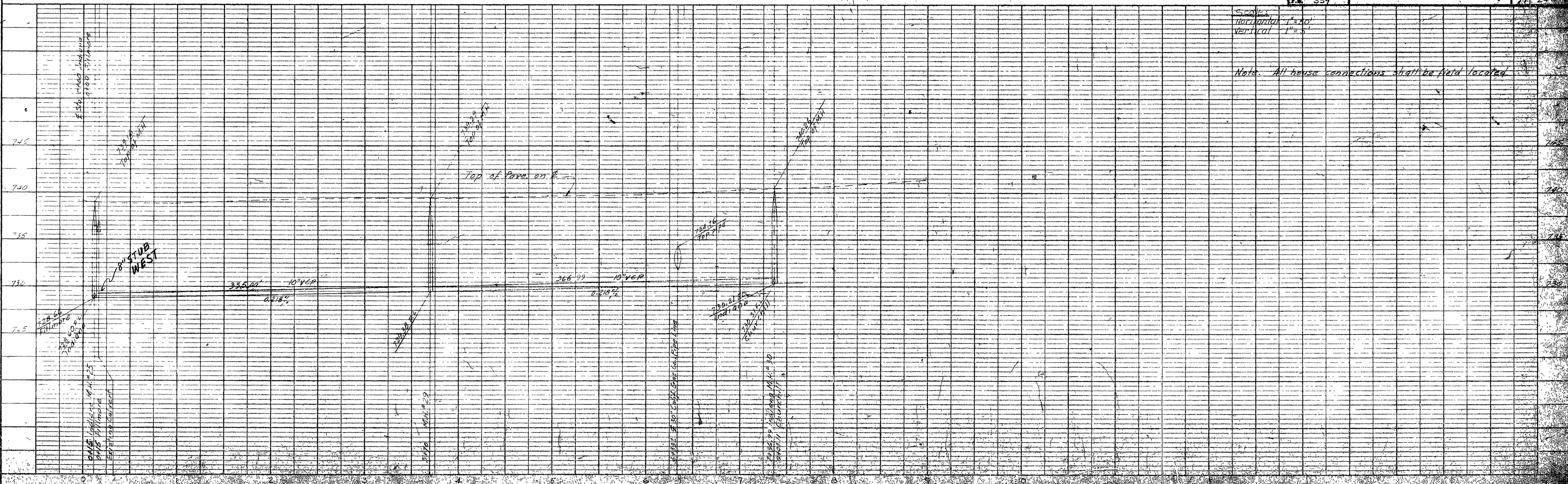
DATE	
BY	
CHECKED	
NO.	
PLAN	
NOTE BOOK	
ALIGNMENT CHECKED	
RT OF WAY CHECKED	

DATE	
BY	
CHECKED	
NO.	
PROFILE	
NOTE BOOK	
GRADES CHECKED	
NO.	
STANDARD NOTES	



Lo Sierra Community Services District  
 Approved \_\_\_\_\_ 19\_\_\_\_  
 By \_\_\_\_\_

M.H. Sewer Main Relocated on Indiana		524	02/28/79
Sewer D15 to 7130.15 increased to 10"		427	02/28/79
REVISIONS		DATE	BY
TOWN AND COUNTRY ESTATES UNIT NO. 4			
SEWER PLAN AND PROFILE			
INDIANA AVENUE			
SCALE	1" = 30'	W.C.	
DATE	12/79	ALBERT A. WEBB ASSOCIATES	
DRAWN	L.G.	CIVIL ENGINEERS	
TRACED			
CHECKED		RIVERSIDE	CALIFORNIA
F.B.	339		

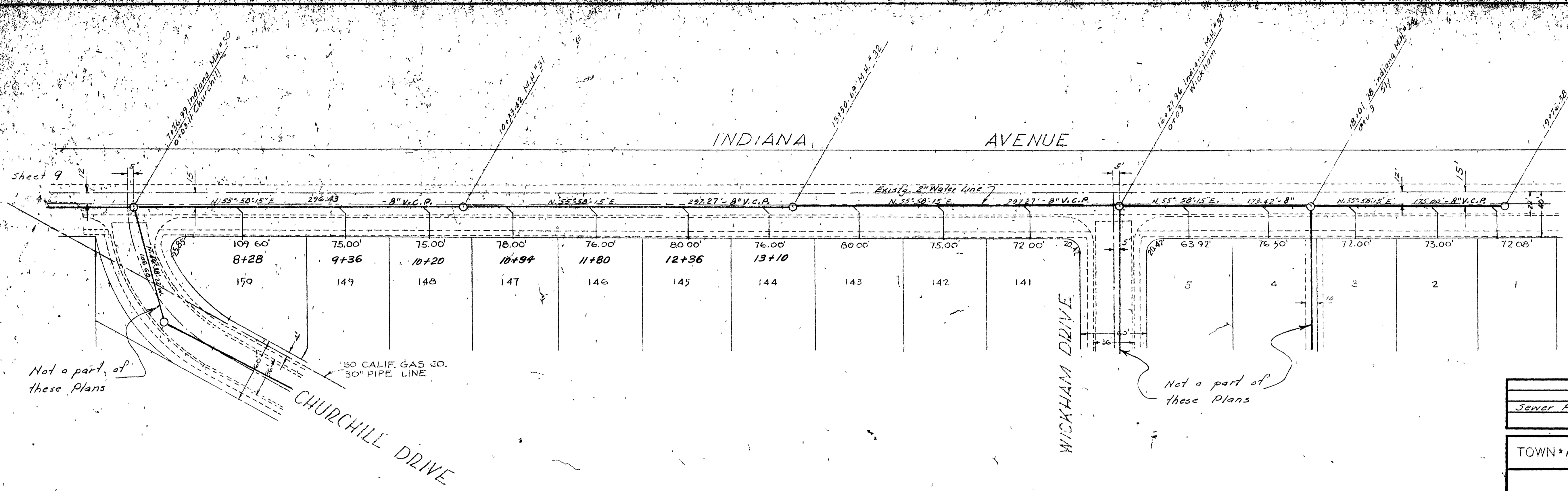


Scale:  
 Horizontal 1" = 30'  
 Vertical 1" = 5'

Note: All house connections shall be field located

SURVEYED  
 PLAN BOOK  
 ALIGNMENT CHECKED  
 BY D.F. MAY 1958

SURVEYED  
 PLAN BOOK  
 DIMENSIONS CHECKED  
 BY B.M. ANTER  
 STRUCTURE NOTATIONS OMITTED



Not a part of these Plans

Not a part of these Plans

La Sierra Community Services District  
 Approved \_\_\_\_\_ 19\_\_\_\_  
 By \_\_\_\_\_

House Connections shown on this sheet are not a part of these Plans.

Sewer Relocated		53400	458
REVISIONS	DATE	BY	
TOWN AND COUNTRY ESTATES UNIT NO. 4			
SEWER PLAN AND PROFILE			
INDIANA AVENUE			
SCALE	1" = 50'	W.O. 39-273	SHEET
DATE	12-57		10
DRAWN	L.G.		OF 11 SHEETS
TRACED			DWG. NO.
CHECKED			59-273
F.B.	339		
ALBERT A. WEBB ASSOCIATES		RIVERSIDE CALIFORNIA	
CIVIL ENGINEERS			

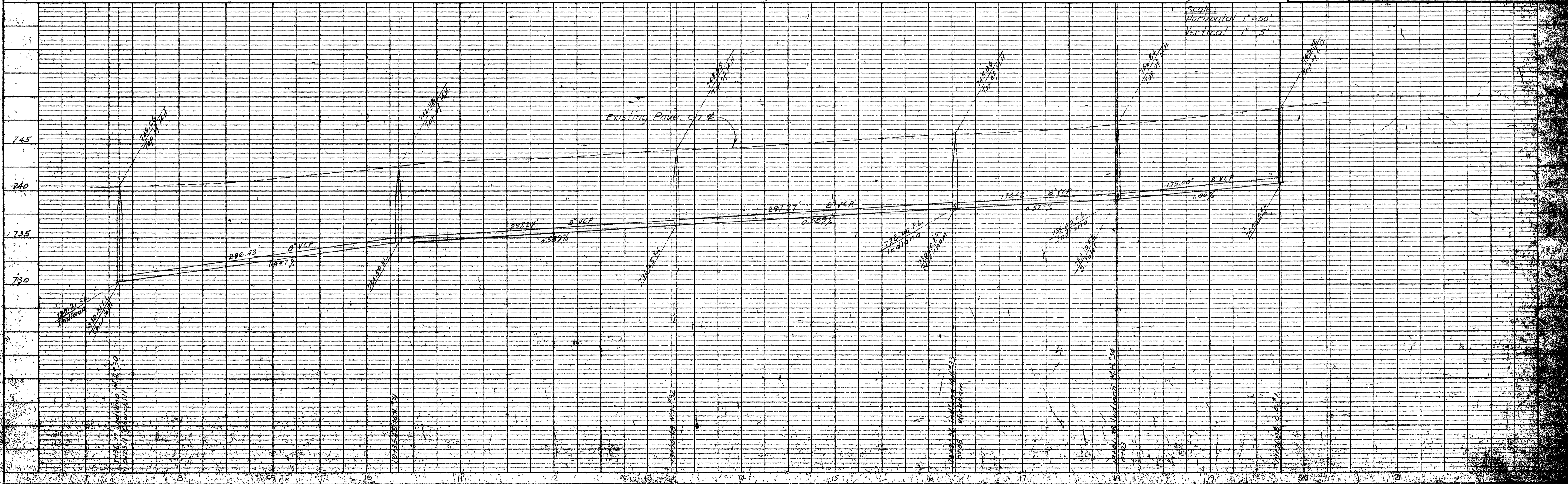
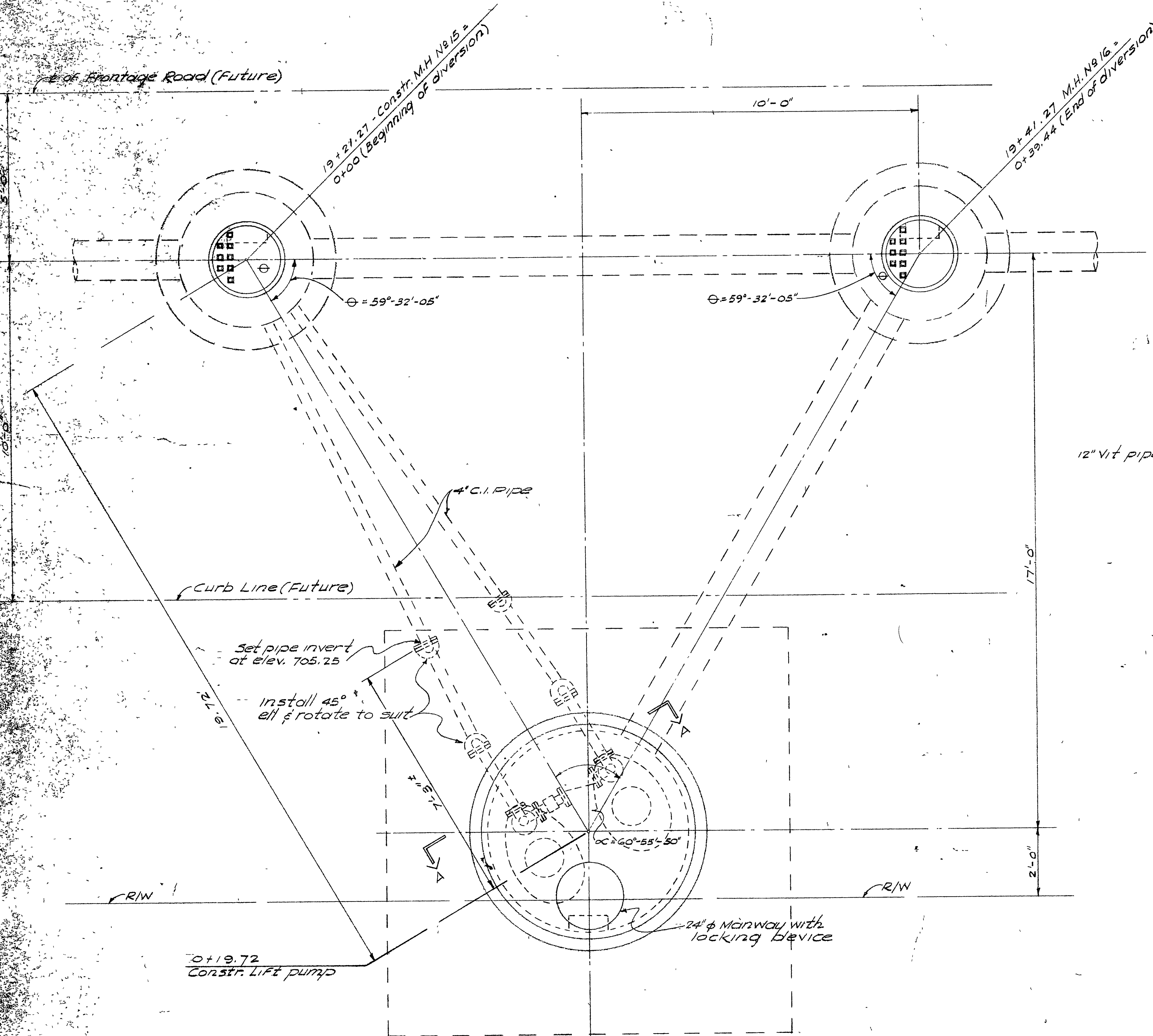
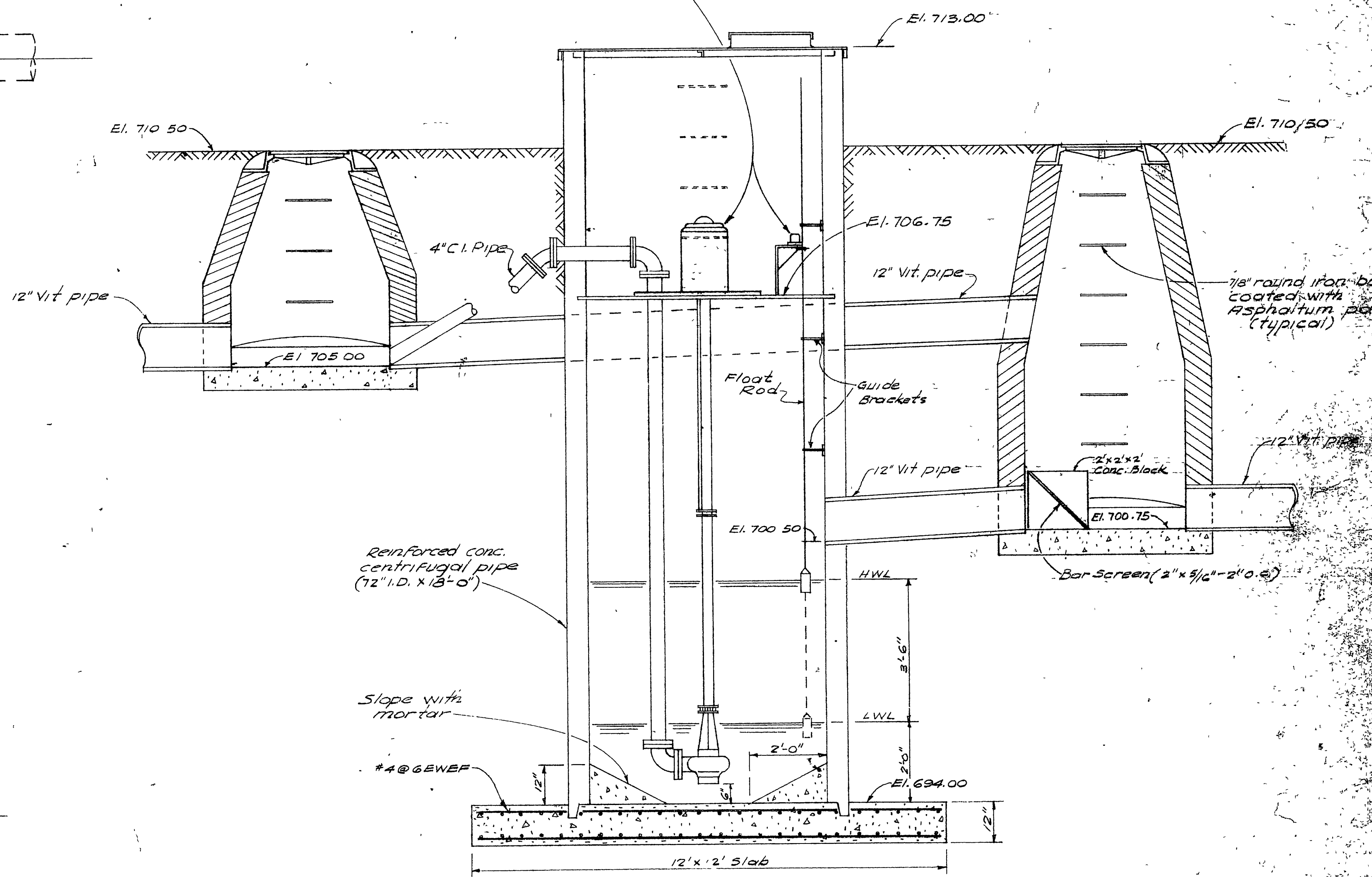


PLATE 1 - PLAN - PROFILE OF P.R. & E. STANDARD  
 HOFFER & ESSER CO. NEW YORK

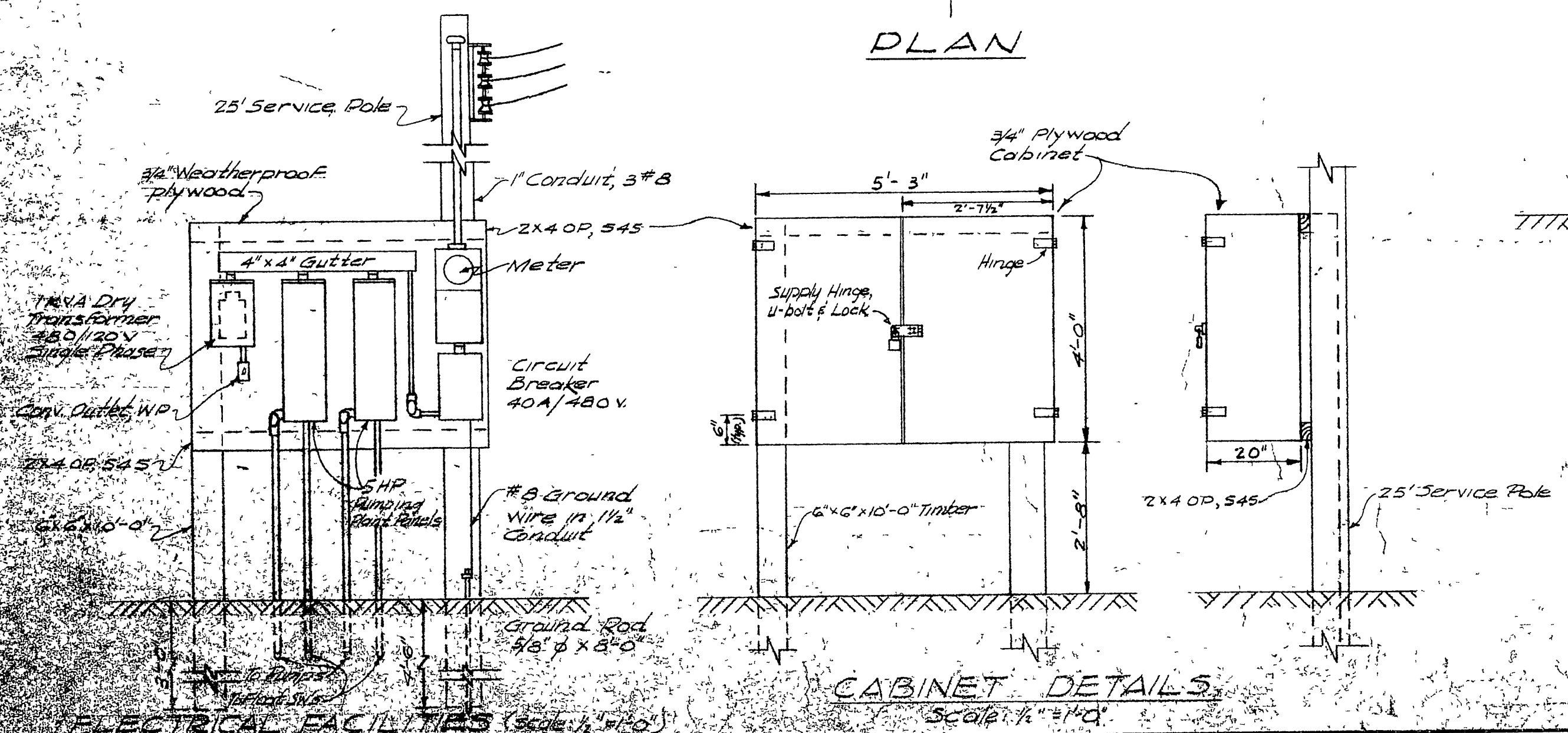


PLAN

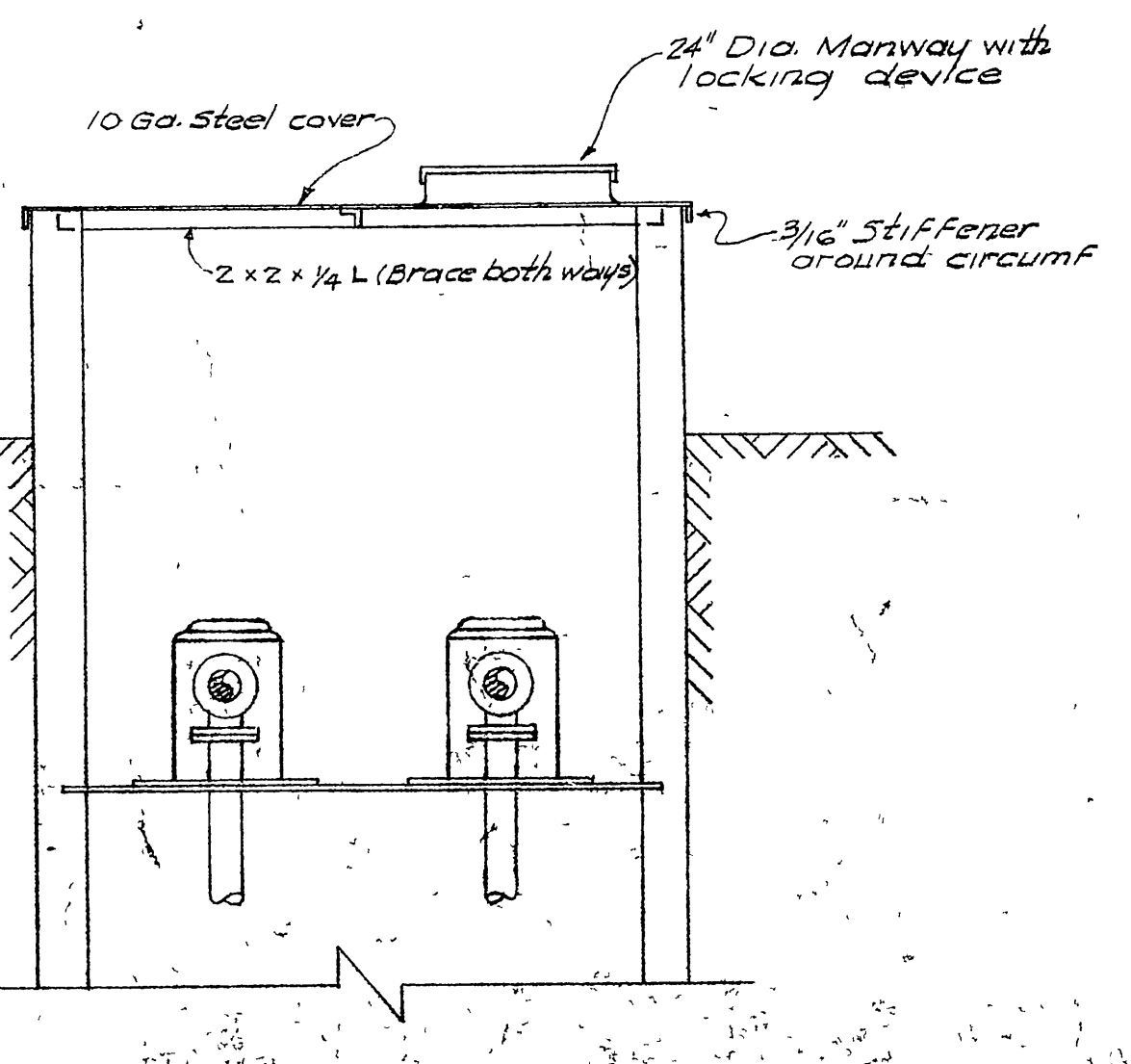
2 Non-clog suspended submerged pumps w/2 heavy duty float switches and floats (#6715-3 Duplex w/ F.M.Co.)



SECTION



CABINET DETAILS



SECTION A-A

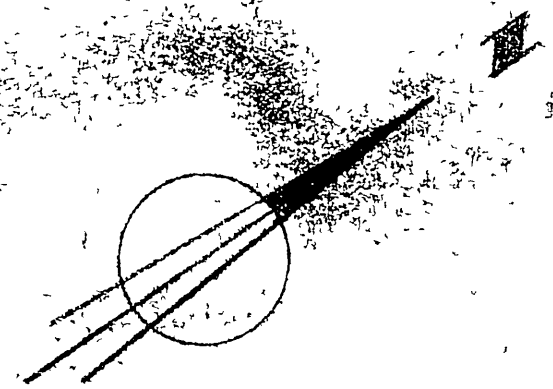
- NOTES:**
- All metal surfaces shall be painted.
  - Pumps shall be Fairbanks Morse #500 Wsk Duplex with 3 HP explosion proof motors and float switches with pump characteristic of Head 10 Ft., Capacity 300 gpm.

REVISIONS	

TOWN AND COUNTRY ESTATES  
DETAIL OF  
LIFT PUMPS  
SCALE 1/4" = 1'-0"

ALBERT E. WEBB ARCHITECTS  
CIVIL ENGINEERS  
ALBANY

S-496



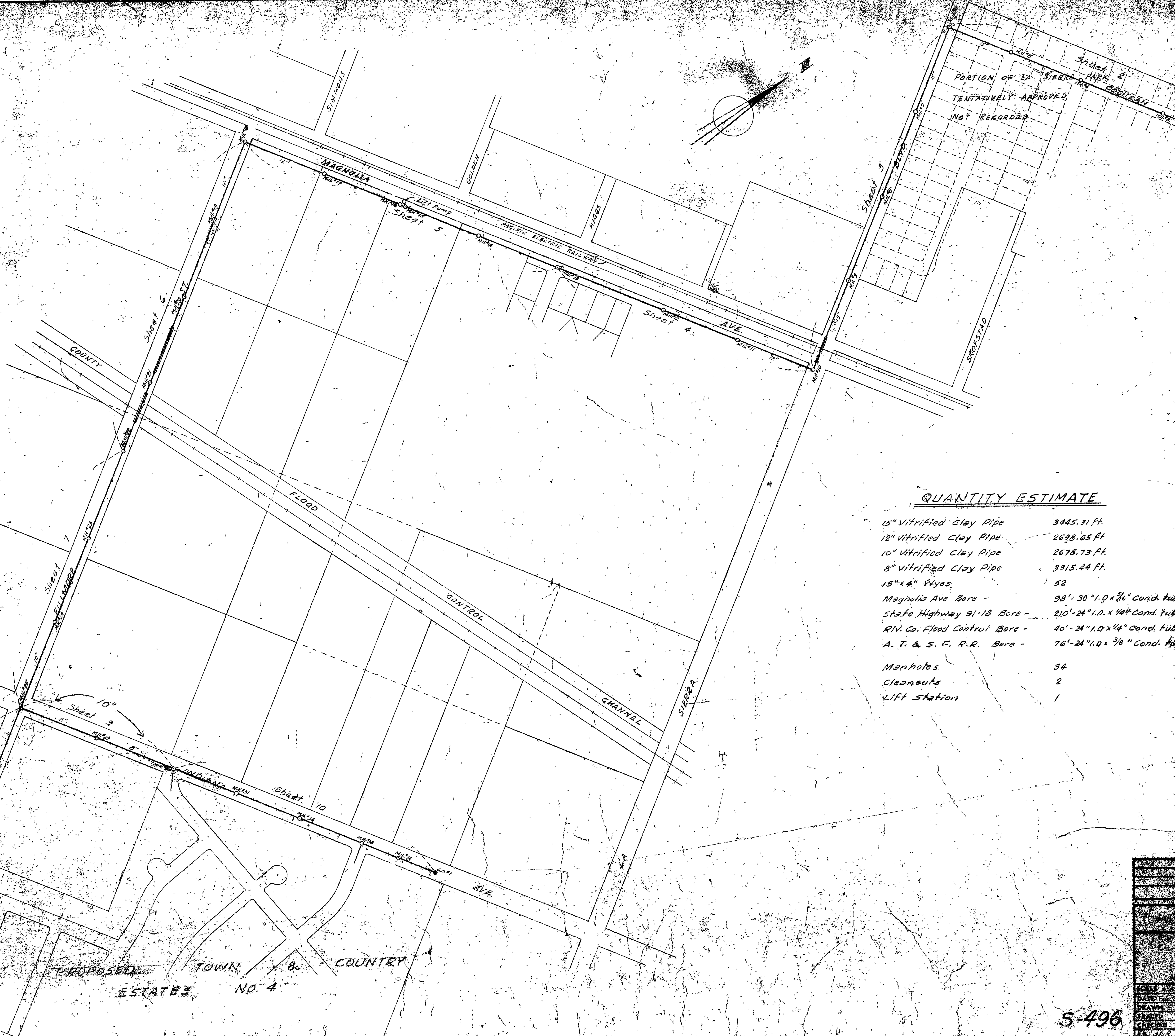
QUANTITY ESTIMATE

15" Vitrified Clay Pipe	3445.31 ft.
12" Vitrified Clay Pipe	2698.65 ft.
10" Vitrified Clay Pipe	2678.73 ft.
8" Vitrified Clay Pipe	3315.44 ft.
15" x 4" Vvyes	52
Magnolia Ave Bore -	98'-30" I.D. x 7/8" Cond. tube
State Highway 91-18 Bore -	210'-24" I.D. x 1/4" Cond. tube
Riv. Co. Flood Control Bore -	40'-24" I.D. x 1/4" Cond. tube
A. T. & S. F. R.R. Bore -	76'-24" I.D. x 7/8" Cond. tube
Manholes	34
Cleanouts	2
Lift Station	1

TOWN AND COUNTY	
SHEET NO.	
SCALE	
DATE	ALBERT A. MOORE
DRAWN	
CHECKED	RIVERSIDE
CALIFORNIA	

S-496

PROPOSED TOWN ESTATES NO. 4



PORTION OF SHEET TENTATIVELY APPROVED NOT RECORDED

COUNTY

Sheet 7

Sheet 6

Sheet 5

Sheet 4

Sheet 9

Sheet 8

Sheet 10

Sheet 9

Sheet 8

COUNTRY

MAGNOLIA

FLOOD

CONTROL

CHANNEL

PACIFIC ELECTRIC RAILWAY

AVE.

STATE

GOLDEN

WINGS

STOFSTAD

SIERRA

COLEMAN

STANFORDS

LIFT PUMP

Sheet 5

Sheet 5

Sheet 5

Sheet 5

Sheet 5

Sheet 5

Sheet 5

Sheet 5

Sheet 5

Sheet 5

Sheet 5

Sheet 5

Sheet 5

Sheet 5

Sheet 5

Sheet 5

Sheet 5

Sheet 5

Sheet 5

Sheet 5

Sheet 5

Sheet 5

Sheet 5

Sheet 5

Sheet 5

Sheet 5

Sheet 5

Sheet 5

Sheet 5

Sheet 5

Sheet 5

Sheet 5

Sheet 5

Sheet 5

Sheet 5

Sheet 5

Sheet 5

Sheet 5