

IMPROVEMENT PLANS FOR SANITARY SEWERS

ASSESSMENT DISTRICT NO. 3

LA SIERRA COMMUNITY SERVICES DISTRICT COUNTY OF RIVERSIDE STATE OF CALIFORNIA

ALBERT A WEBB ASSOCIATES
CIVIL ENGINEERS
RIVERSIDE CALIFORNIA

DIRECTORS OF LA SIERRA COMMUNITY SERVICES DISTRICT

GEORGE ALLEN, PRESIDENT
K.F. AMBS
WILLIAM LIGHTFELDT
KEITH RICH
RICHARD SEIDLER

ESTIMATED QUANTITIES

		FINAL
1. 8" V.C.P. SEWER	12,544 L.F.	12,507.53 L.F.
2. STANDARD MANHOLE (43)	319 V.F.	319.00 V.F.
3. STANDARD CLEANOUT (2)	15 V.F.	15.00 V.F.
4. 4" V.C.P. HOUSE CONNECTION	3,398 L.F.	3,620.00 L.F.
5. 8"x4" V.C.P. WYES	225 EA.	227 EA.
6. REMOVE & REPLACE CONCRETE (approximate)	300 Sq.Ft.	
7. REMOVE & REPLACE A.C. STREET PAVING (approx)	33,400 Sq.Ft.	
8. REMOVE & REPLACE A.C. DRIVEWAY PAVING (approx)	1,900 Sq.Ft.	
9. STANDARD DROP MANHOLE (1)	13 V.F.	11.00 V.F.
10 Chimneys		17.00 V.F.

FINAL



A P P R O V A L S

Approved by the La Sierra Community Services District this 17th day of July 1962. By George Allen President

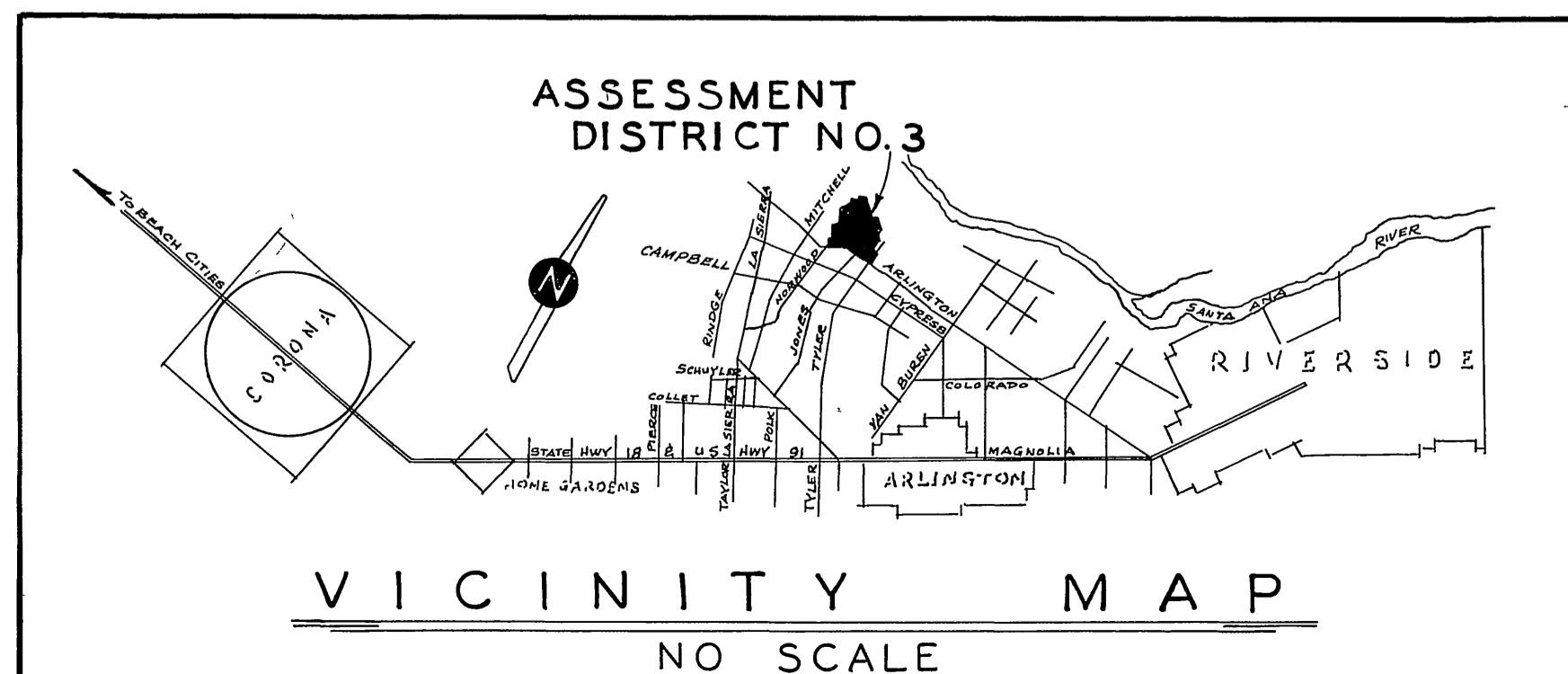
Approved this 22nd day of MAY 1962. By Ernest N. Webb Ernest N. Webb RCE 9876 Albert A. Webb Associates

GENERAL NOTES:

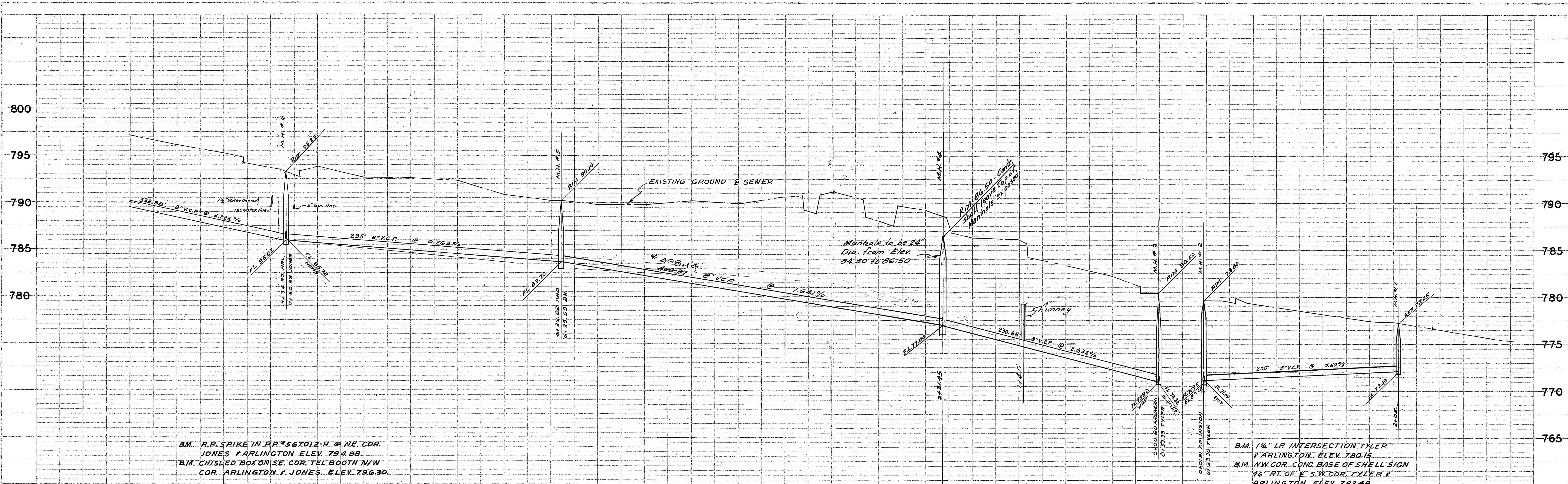
Assessment District No 3 is served by the following utilities:
Twin Buttes Water Co. (irrigation water)
Southwest Water Co (domestic water)
Southern California Gas Co. (gas)
Southern California Edison Co. (power)
Pacific Telephone & Telegraph Co. (telephone)
Location of existing utilities are approximate and are shown for the benefit of the contractor. It shall be his responsibility to verify same and no responsibility will be assumed by the La Sierra Community Services District for underground obstructions encountered whether shown on the plans or not.

CONSTRUCTION NOTES:

- House connection wyes shall be located in the field.
- The top of all manholes located in pavement shall be brought to paving grade.
- The top of all manholes located in unpaved areas shall be brought to natural ground.

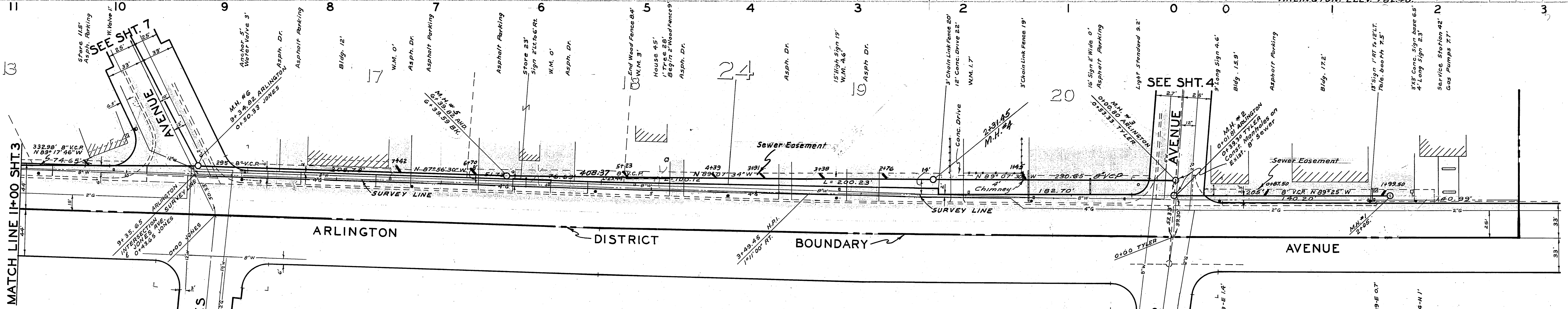


REVISIONS	DATE	BY
ASSESSMENT DISTRICT NO.3 LA SIERRA COMMUNITY SERVICES DISTRICT SANITARY SEWERS INDEX MAP		
SCALE 1"=400'	DATE APR 1962	W 062-40 SHEET 1
DRAWN B.E.L.	ALBERT A. WEBB ASSOCIATES CIVIL ENGINEERS	OF 13 SHEETS
TRACED	RIVERSIDE CALIFORNIA	DWG. NO.
CHECKED B.E.C.	R.E. 9876	62-40-B
F.B. 483		



BM. R.R. SPIKE IN RR #567012-H @ NE COR. JONES / ARLINGTON. ELEV. 794.88.
BM. CHISLED BOX ON SE. COR. TEL. BOOTH N/W COR. ARLINGTON / JONES. ELEV. 796.30.

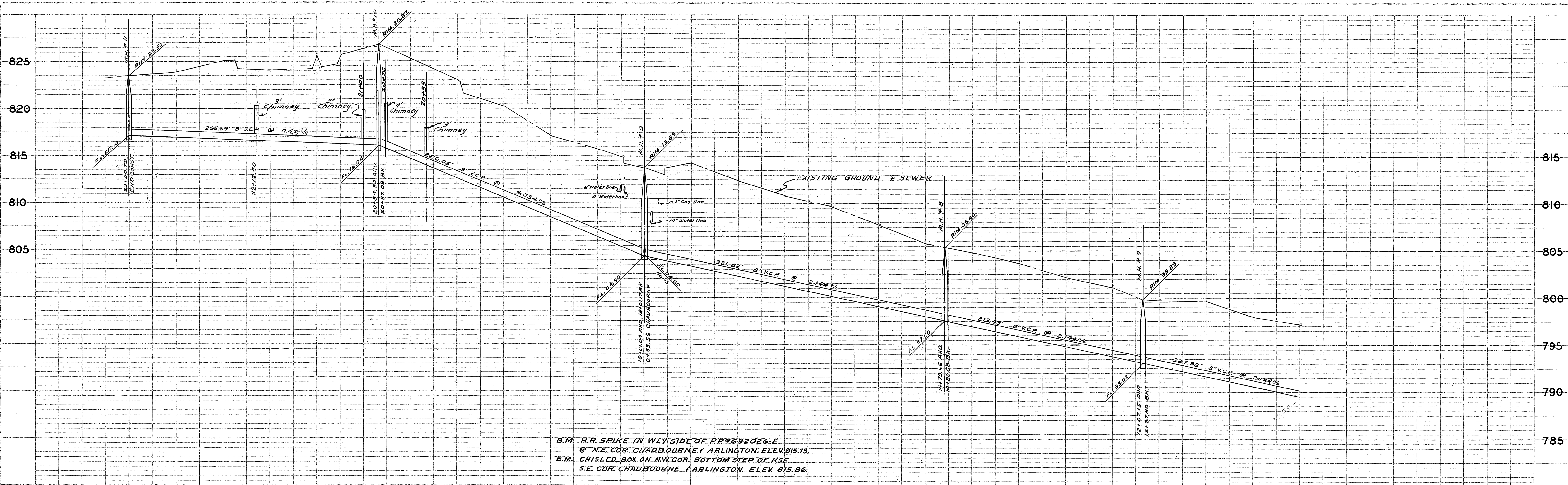
BM. 1/4" I.P. INTERSECTION TYLER / ARLINGTON. ELEV. 780.15.
BM. NW COR. CONC. BASE OF SHELL SIGN 46' RT. OF E. S.W. COR. TYLER / ARLINGTON. ELEV. 782.48.



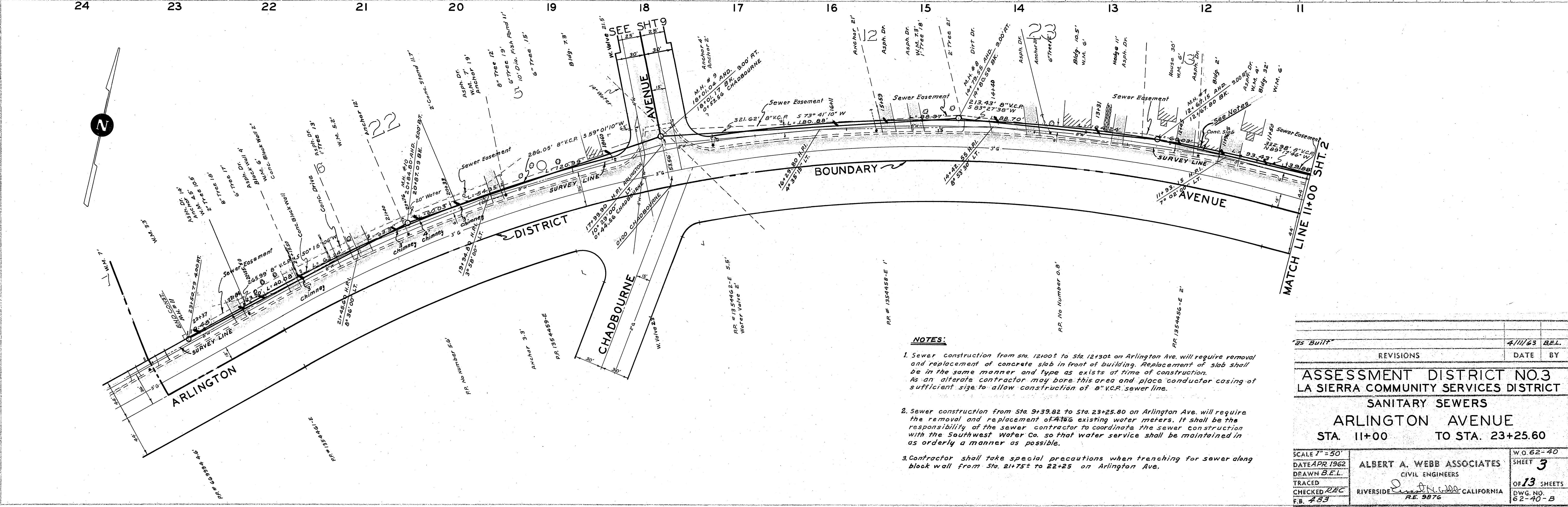
35 BUILT		4/11/63 BEL	
REVISIONS		DATE BY	
ASSESSMENT DISTRICT NO.3 LA SIERRA COMMUNITY SERVICES DISTRICT SANITARY SEWERS			
ARLINGTON AVENUE			
STA. 0+00		TO STA. 2+40 EAST	
SCALE 1"=50'	DATE APR 1962	ALBERT A. WEBB ASSOCIATES CIVIL ENGINEERS RIVERSIDE, CALIFORNIA RE. 9876	W.O. 62-40
DRAWN B.E.L.	TRACED		SHEET 2
CHECKED REC	F.B. 483		OF 13 SHEETS
			DWG. NO. 62-40-B

PROJECT: SANITARY SEWERS
SHEET NO. 2 OF 13
DATE: 4/11/63

PLAN
DRAWN BY: B.E.L.
CHECKED BY: REC
DATE: 4/11/63



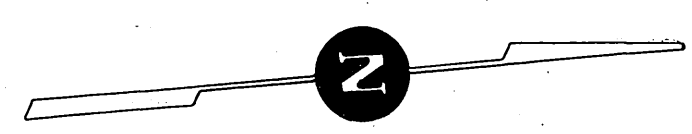
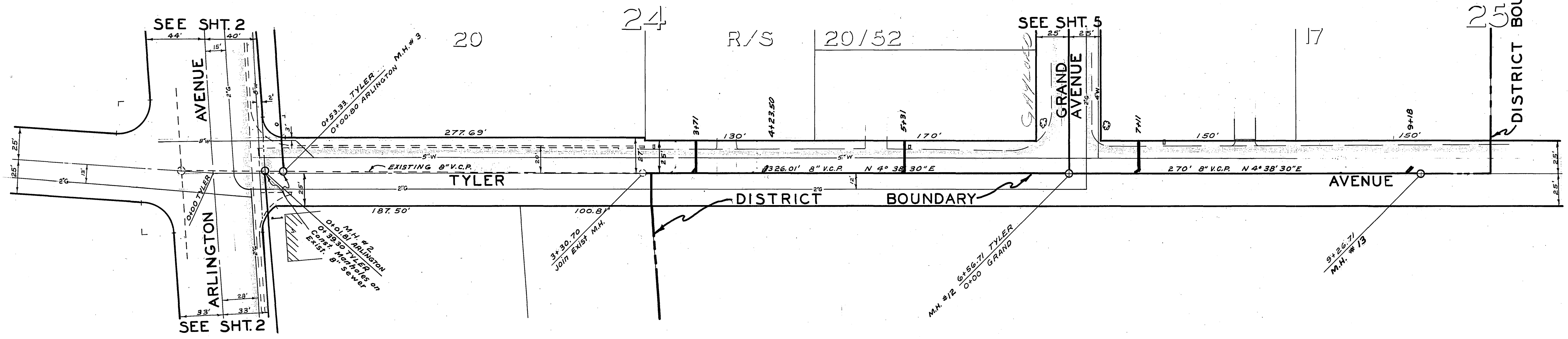
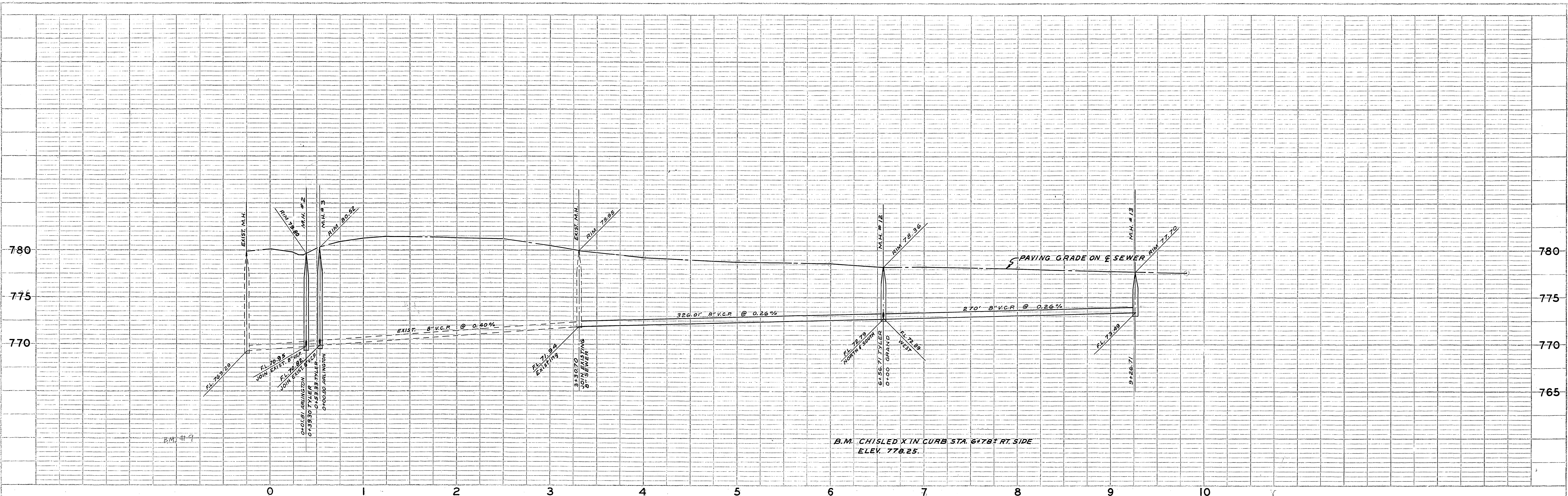
PROFILE	DATE	BY
NO. 1	4/11/63	B.E.L.



PLAN	DATE	BY
NO. 1	4/11/63	B.E.L.

- NOTES:**
- Sewer construction from Sta. 12+00 to Sta. 12+30 on Arlington Ave. will require removal and replacement of concrete slab in front of building. Replacement of slab shall be in the same manner and type as exists at time of construction. As an alternate contractor may bore this area and place conductor casing of sufficient size to allow construction of 8" V.C.R. sewer line.
 - Sewer construction from Sta. 9+39.82 to Sta. 23+25.80 on Arlington Ave. will require the removal and replacement of 4" to 6" existing water meters. It shall be the responsibility of the sewer contractor to coordinate the sewer construction with the Southwest Water Co. so that water service shall be maintained in as orderly a manner as possible.
 - Contractor shall take special precautions when trenching for sewer along block wall from Sta. 21+75 to 22+25 on Arlington Ave.

35 Built	4/11/63	B.E.L.
REVISIONS	DATE	BY
ASSESSMENT DISTRICT NO.3 LA SIERRA COMMUNITY SERVICES DISTRICT SANITARY SEWERS ARLINGTON AVENUE STA. 11+00 TO STA. 23+25.60		
SCALE 1" = 50'	DATE APR 1962	W.O. 62-40
DRAWN B.E.L.	CHECKED R.E.C.	SHEET 3
TRACED	F.B. #83	OF 13 SHEETS
ALBERT A. WEBB ASSOCIATES CIVIL ENGINEERS RIVERSIDE CALIFORNIA R.E. 997C		DWG. NO. 62-40-B



"As Built" 4/11/63 B.E.L.

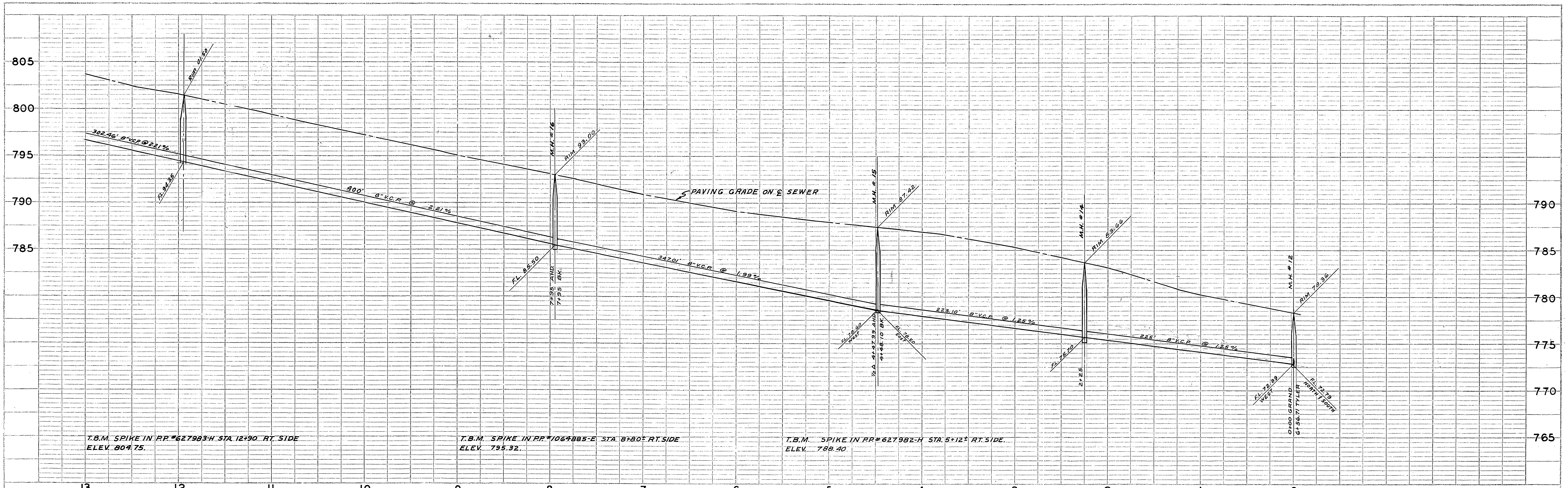
ASSESSMENT DISTRICT NO.3
LA SIERRA COMMUNITY SERVICES DISTRICT
SANITARY SEWERS
TYLER AVENUE
 STA. 3+30.70 TO STA. 9+26.71

1" = 50' 62-40
 APR. 1962 4
 B.E.L. 13

REC RE 9876
 483 62-40-B

PROFILE	
NO. 483/39-40	DATE
PROJECT	DATE
NOTED	DATE
BY	DATE

PLAN	
NO. 483/39	DATE
PROJECT	DATE
NOTED	DATE
BY	DATE

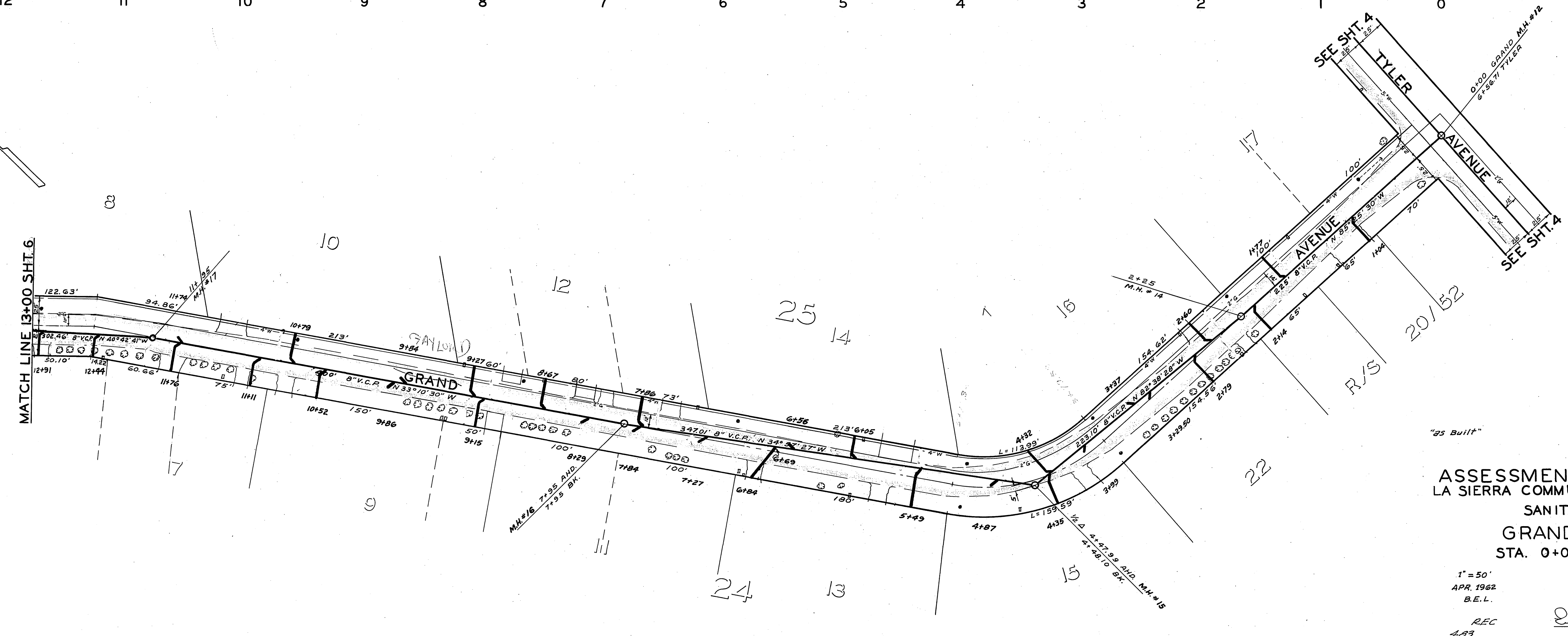
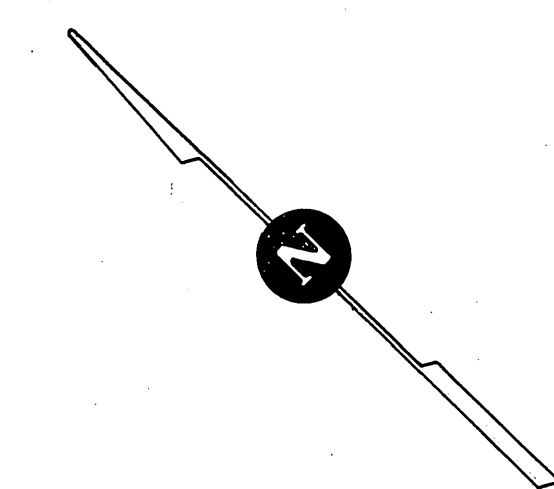


PROFILE	
DESIGNED BY	DATE
NOTED BY	
SCALE	
PROJECT NO.	483/32-36
DATE	

T.B.M. SPIKE IN PP#627983-H STA. 12+90 RT. SIDE
 ELEV. 804.75.

T.B.M. SPIKE IN PP#1064885-E STA. 8+80 RT. SIDE
 ELEV. 795.32.

T.B.M. SPIKE IN PP#627982-H STA. 5+12 RT. SIDE
 ELEV. 788.40.

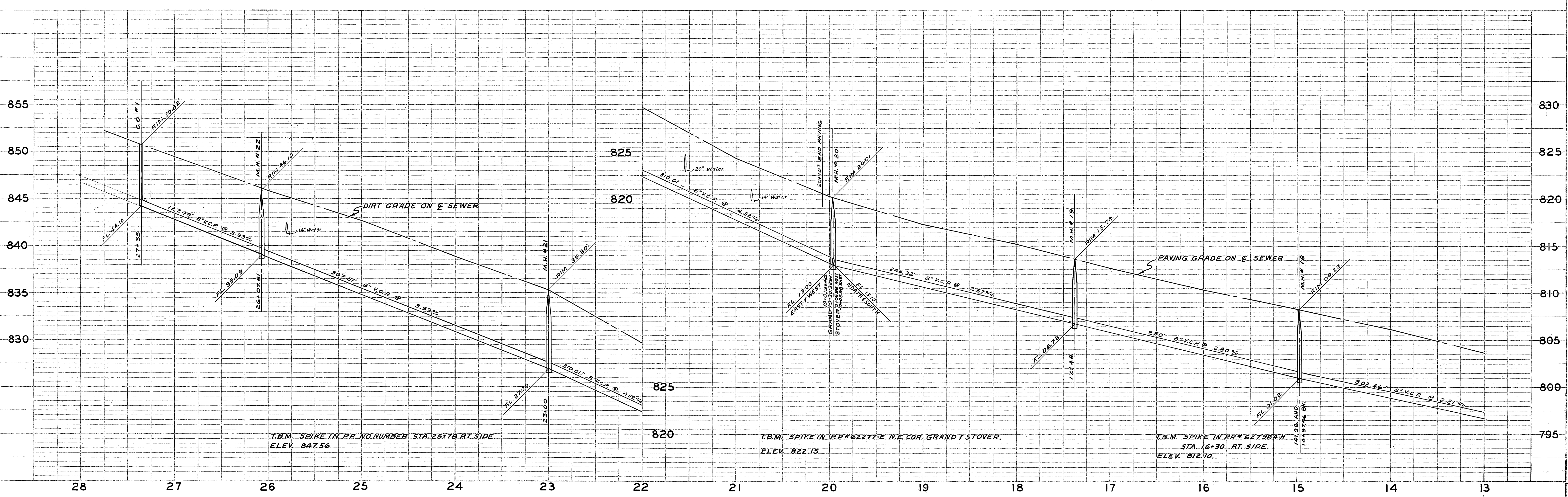


PLAN	
DESIGNED BY	DATE
NOTED BY	
SCALE	
PROJECT NO.	483/32-36
DATE	

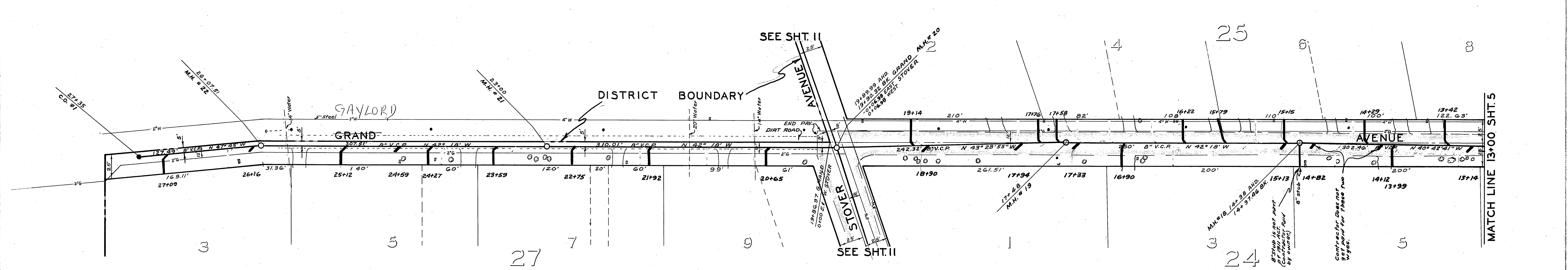
"25 Built" 4/11/63 B.E.L.

ASSESSMENT DISTRICT NO.3
 LA SIERRA COMMUNITY SERVICES DISTRICT
 SANITARY SEWERS
 GRAND AVENUE
 STA. 0+00 TO STA. 13+00

1" = 50' 62-40
 APR. 1962 5
 B.E.L. 13
 REC 483 RE 9876 62-40-B



PROFILE	SURVEYED	DATE
NO. 483/36-39		

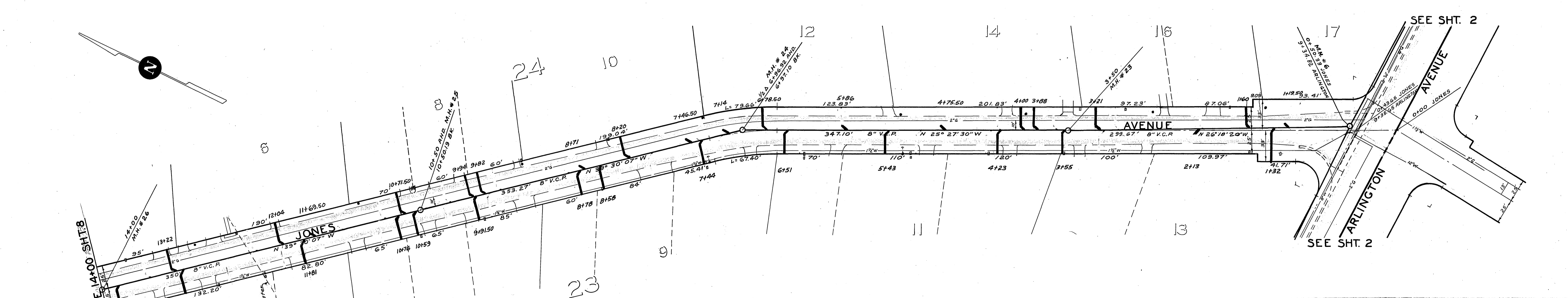
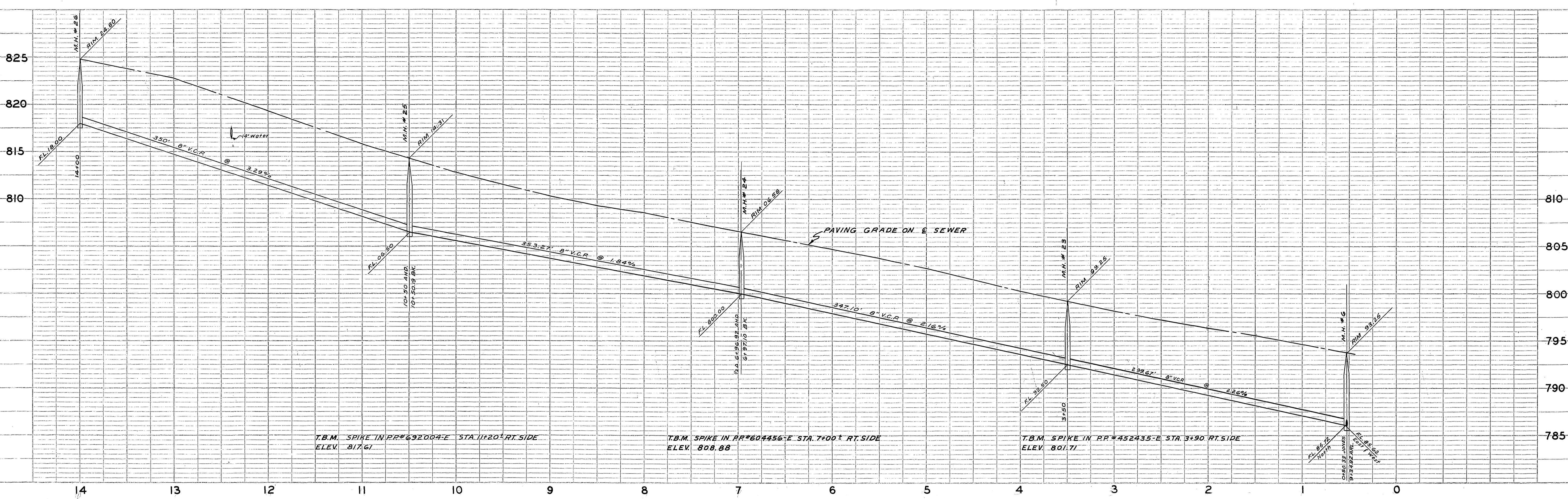


PLAN	SURVEYED	DATE
NO. 483/36-39		

"25 Built" 4/11/63 B.E.L.

ASSESSMENT DISTRICT NO. 3
 LA SIERRA COMMUNITY SERVICES DISTRICT
 SANITARY SEWERS
 GRAND AVENUE
 STA. 13+00 TO STA. 27+35

1" = 50'
 APR. 1962
 B.E.L.
 REC 483
 62-40-6
 6
 13
 REC 483
 62-40-B



PROFILE

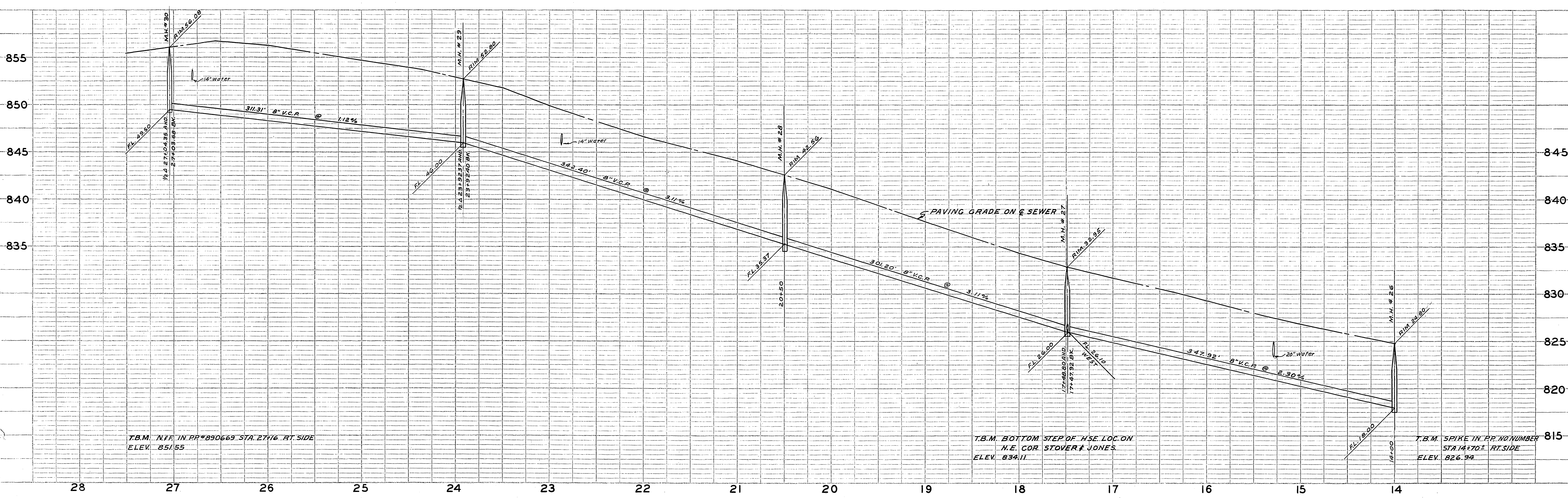
NO. 483/66-27-29	DATE
BY	

PLAN

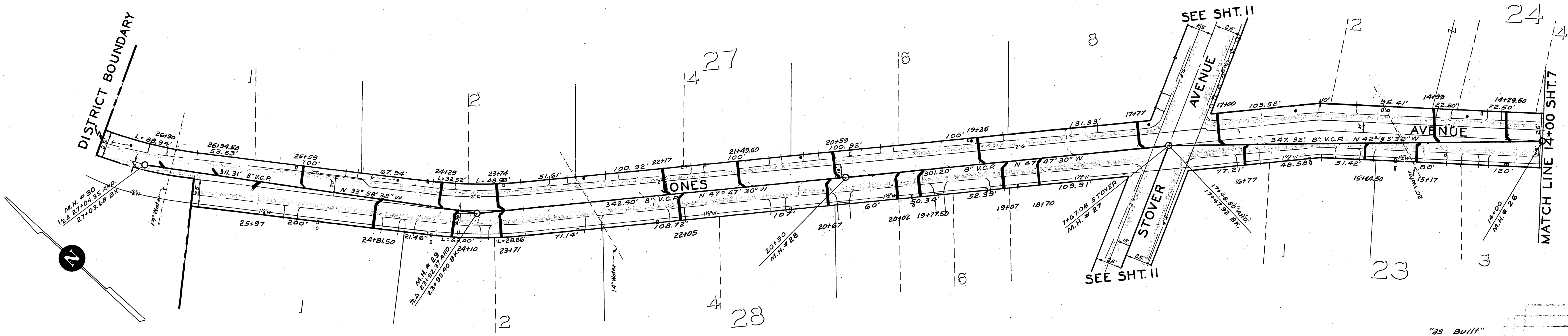
NO. 483/66-18-66	DATE
BY	

"as Built"		4/11/63 B.E.L.
REVISIONS		DATE BY
ASSESSMENT DISTRICT NO.3 LA SIERRA COMMUNITY SERVICES DISTRICT		
SANITARY SEWERS JONES AVENUE STA. 0+52.67 TO STA. 14+00		
SCALE: 1"=50'	DATE: APR. 1962	W.D. 62-40
DESIGNER: B.E.L.	CHECKED: REC	7
TRACES	483	13 SHEETS
CHECKED: REC	483	62-40-B

ALBERT A. WEBB ASSOCIATES
 CIVIL ENGINEERS
 1111 N. 10TH ST. SUITE 100
 DENVER, CO. 80202
 RE. 9876



PROJECT	ASSESSMENT DISTRICT NO. 3
NO. 1 BOOK	493/29-32
DATE	



PLAN	ASSESSMENT DISTRICT NO. 3
NO. 1 BOOK	493/29-32
DATE	

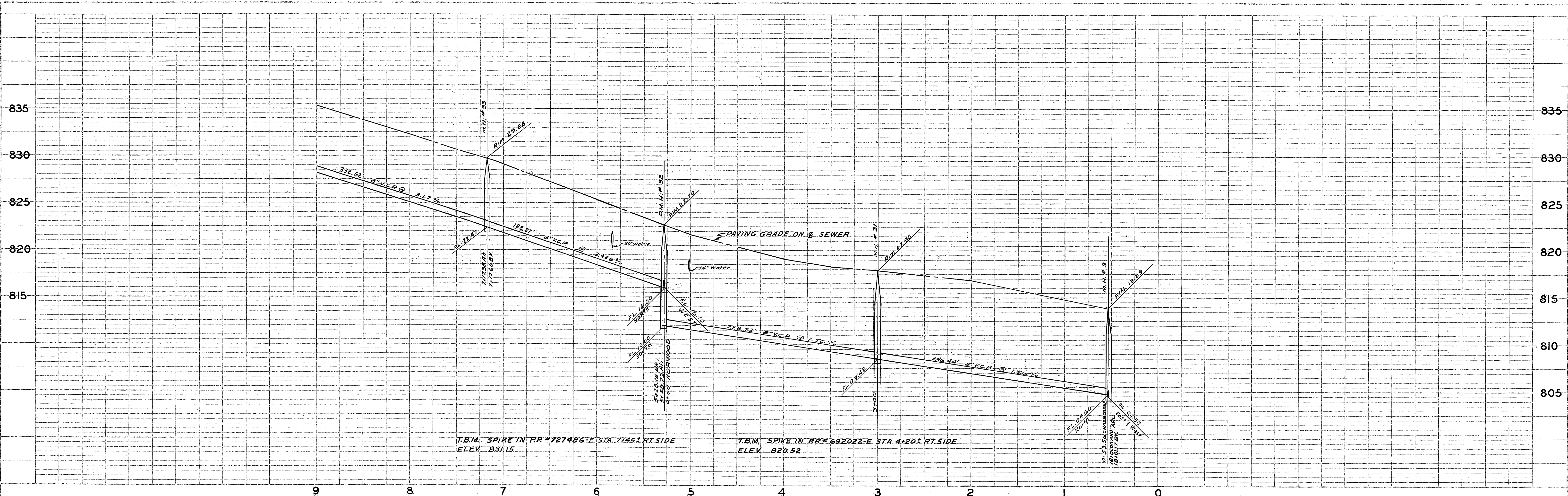
REVISIONS	DATE	BY
"As Built"	4/11/63	BEL.

ASSESSMENT DISTRICT NO. 3
 LA SIERRA COMMUNITY SERVICES DISTRICT
 SANITARY SEWERS
 JONES AVENUE
 STA. 14+00 TO STA. 27+04.35

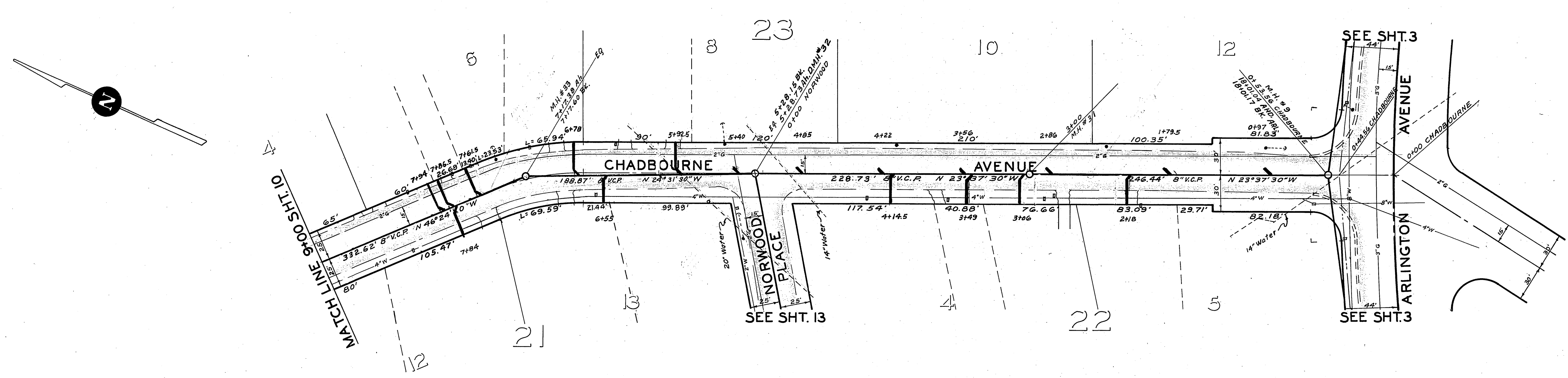
SCALE 1" = 50'
 APR. 1962
 DRAWN B.E.L.
 CHECKED REC
 153

ALBERT A. WEBB ASSOCIATES
 CIVIL ENGINEERS
 RIVERSIDE, CALIFORNIA
 R.E. 9876

SHEET 8
 OF 13 SHEETS
 DIST. NO. 62-40-B

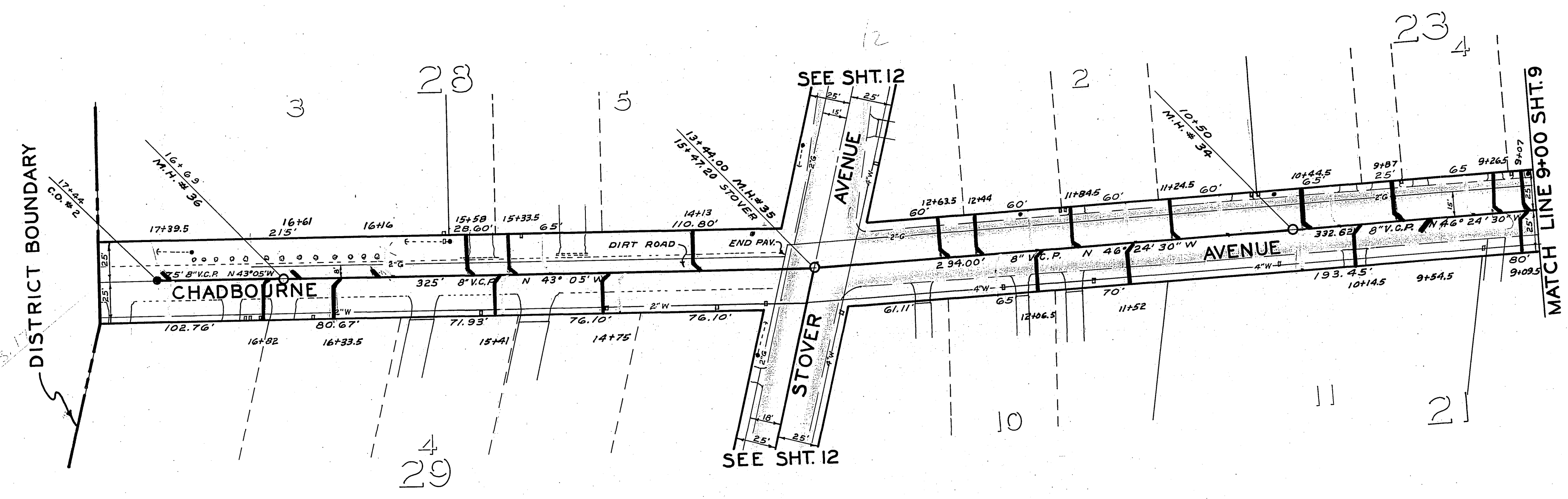
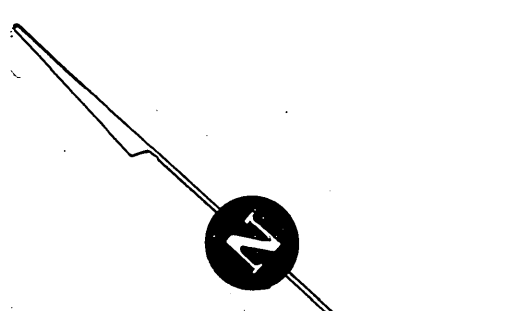
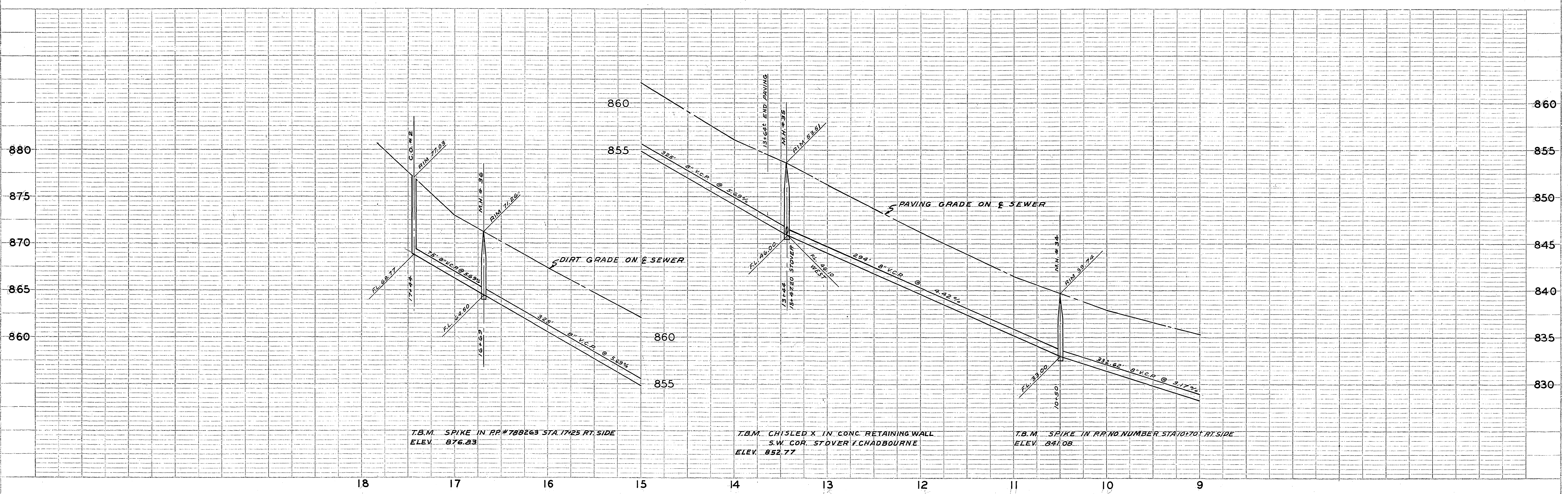


PROJECT	CHADBOURNE AVENUE
DATE	4/23/24
SCALE	AS SHOWN
NO.	433/23-24



PLAN	CHADBOURNE AVENUE
DATE	7/20/20
SCALE	AS SHOWN
NO.	433/23-25

"As Built"		4/12/23	B.E.L.
REVISIONS			
DATE BY			
ASSESSMENT DISTRICT NO.3			
LA SIERRA COMMUNITY SERVICES DISTRICT			
SANITARY SEWERS			
CHADBOURNE AVENUE			
STA. 0+53.56 TO STA. 9+00			
SCALE	1" = 50'	DATE	APR 1962
DESIGNED	B.E.L.	CHECKED	REC
PROJECT	CHADBOURNE AVENUE	DATE	4/23/24
CLIENT	LA SIERRA COMMUNITY SERVICES DISTRICT	PROJECT NO.	62-40-B
ENGINEER	ALBERT A. WISE ASSOCIATES	PROJECT NO.	62-40-B
CIVIL ENGINEER		PROJECT NO.	62-40-B
REGISTERED	REVISION	DATE	4/12/23
NO. 433	BY	DATE	4/12/23



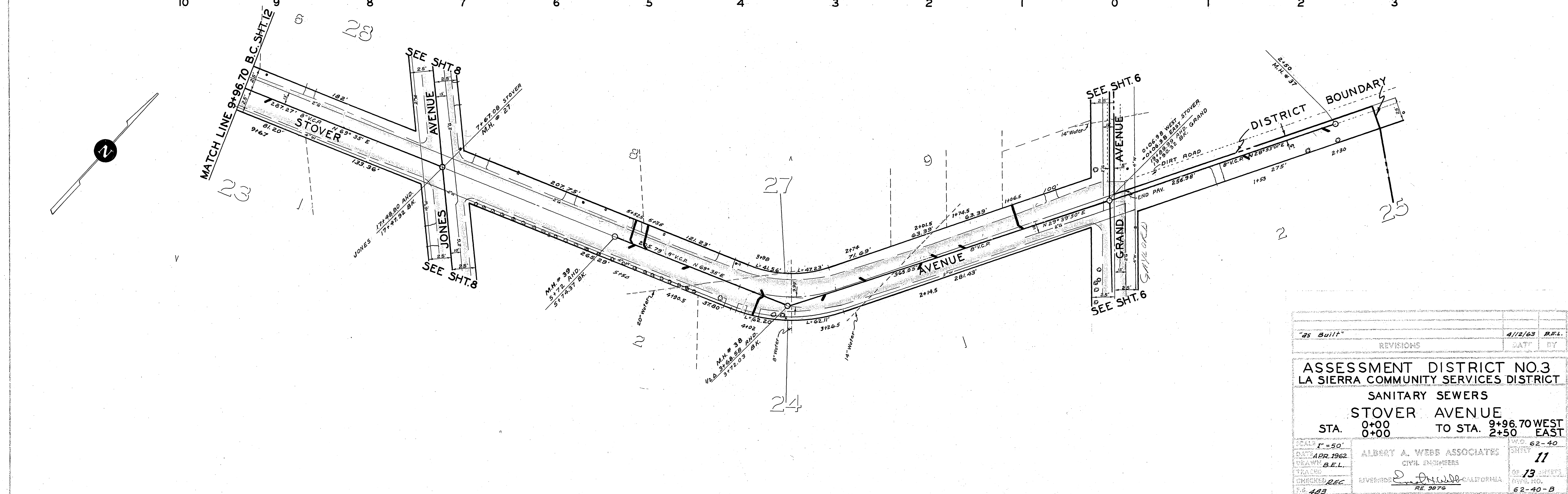
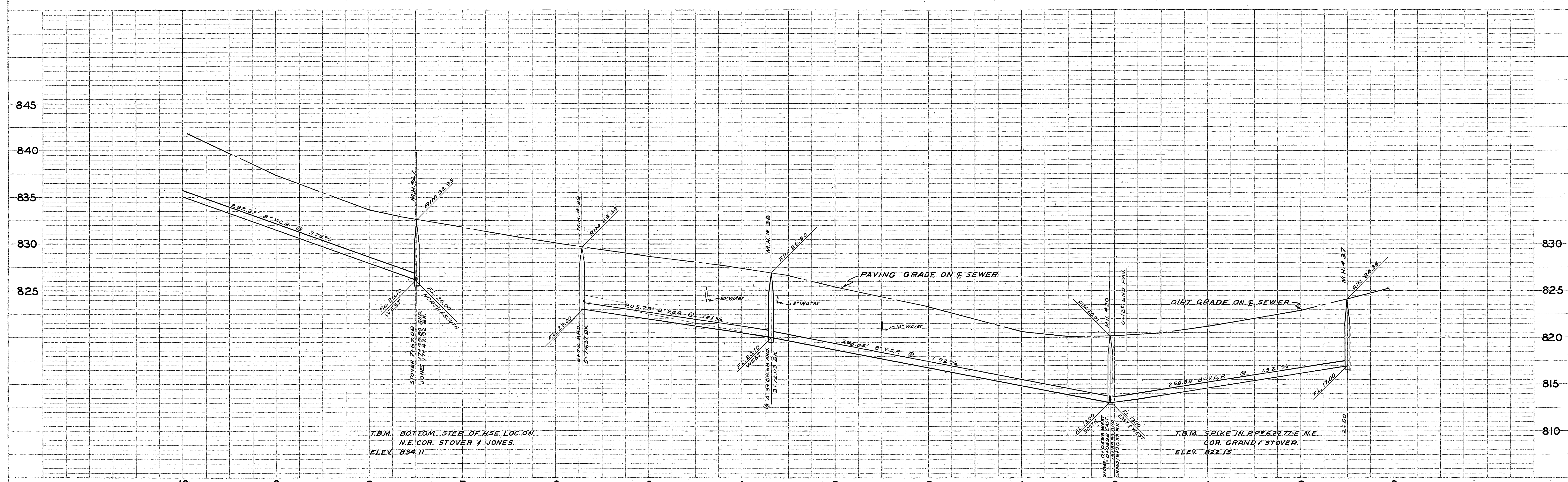
"35 Built" 4/12/63 B.E.L.

ASSESSMENT DISTRICT NO. 3
 LA SIERRA COMMUNITY SERVICES DISTRICT
 SANITARY SEWERS
 CHADBOURNE AVENUE
 STA. 9+00 TO STA. 17+44

1" = 50' 62-40
 APR. 1962 10
 B.E.L. 13
 REC 483 RE. 9876 62-40-B

PROJECT	483/24-26
DATE	
BY	
CHECKED	
APPROVED	
NOTED	
NO.	
DATE	

PLAN	7280
DATE	
BY	
CHECKED	
APPROVED	
NOTED	
NO.	
DATE	



PROJECT NO. 483/59-61, 68-69
 DATE 4/12/63

PLAN SHEET NO. 11
 DATE APR 1962
 DRAWN BY B.E.L.
 CHECKED BY REC
 403

REVISIONS		DATE	BY
"As Built"		4/12/63	B.E.L.

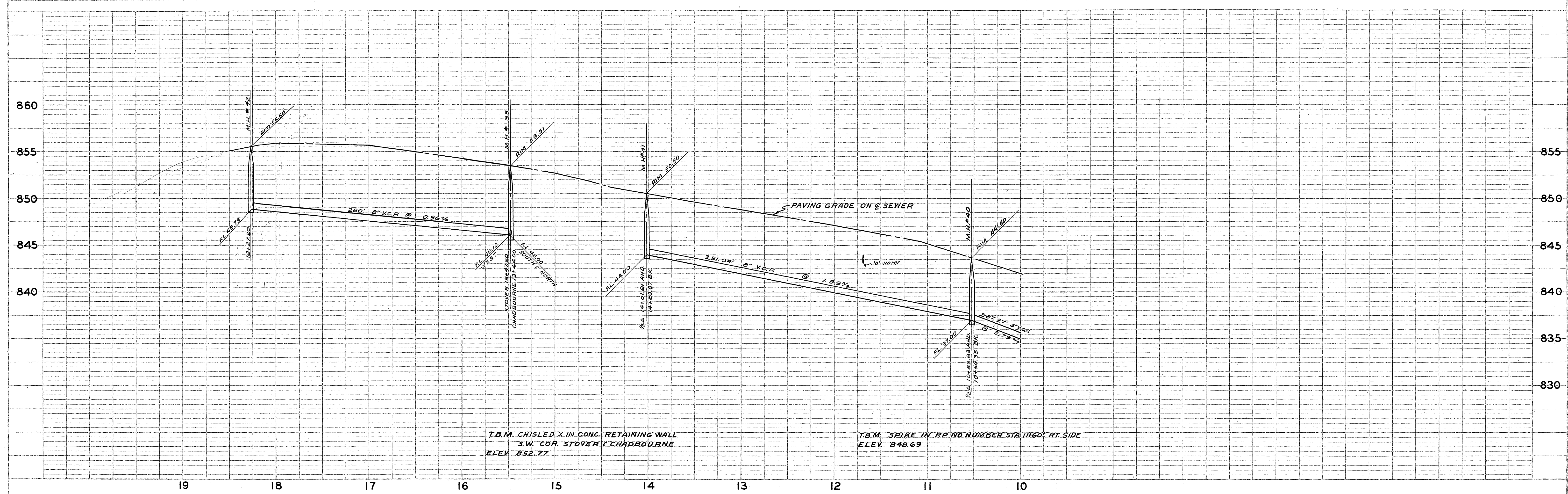
ASSESSMENT DISTRICT NO. 3
LA SIERRA COMMUNITY SERVICES DISTRICT

SANITARY SEWERS
STOVER AVENUE
 STA. 0+00 TO STA. 9+96.70 WEST TO STA. 2+50 EAST

SCALE: 1" = 50'
 DATE: APR 1962
 DRAWN BY: B.E.L.
 CHECKED BY: REC
 403

W.D. NO. 62-40
 SHEET NO. 11
 OF 13 SHEETS
 DIVISION NO. 62-40-B

ALBERT A. WEBB ASSOCIATES
 CIVIL ENGINEERS
 RIVERSIDE, CALIFORNIA
 RE. 9876

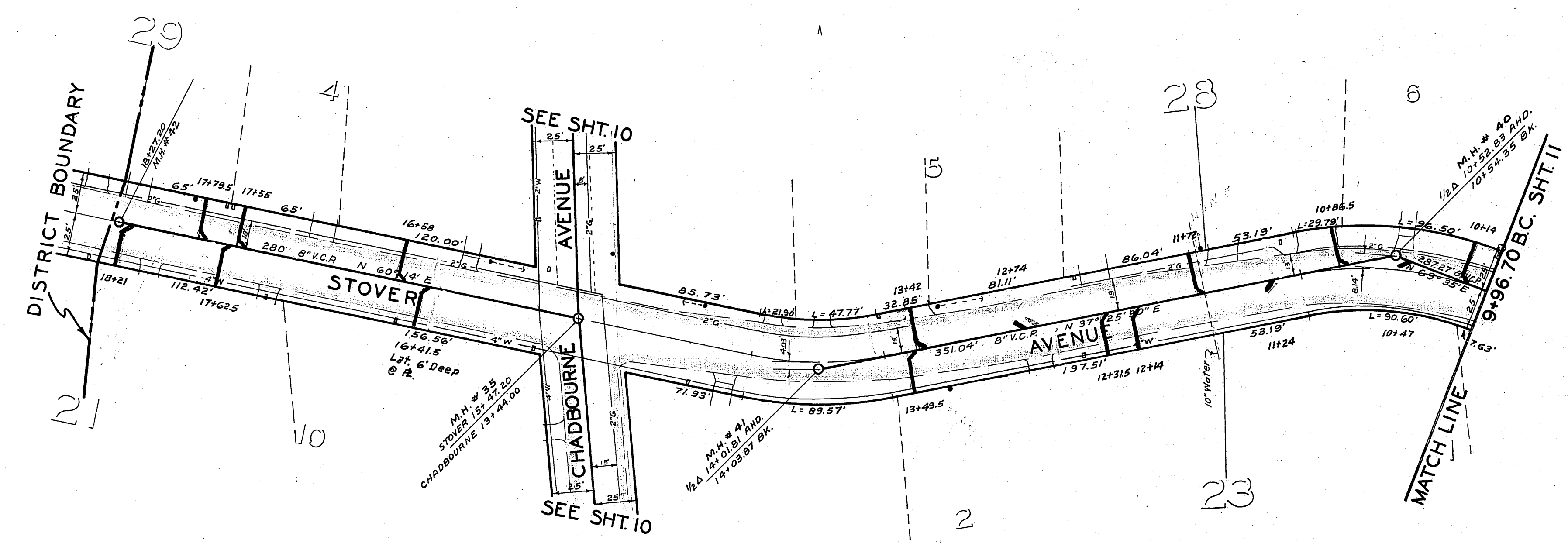
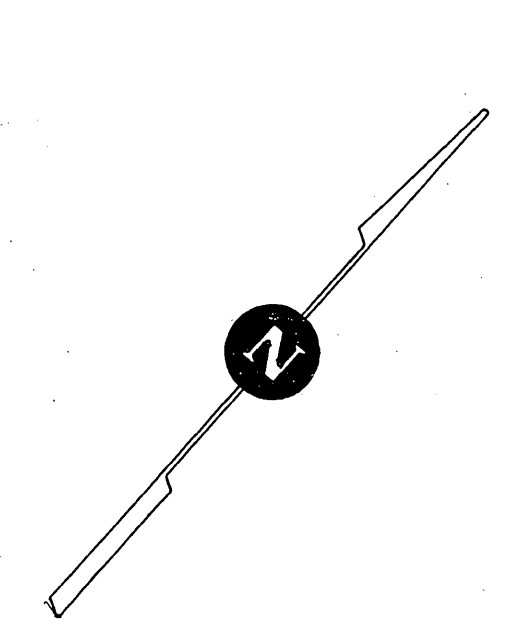


T.B.M. CHISEL 'X' IN CONC. RETAINING WALL
 S.W. COR. STOVER & CHADBOURNE
 ELEV. 852.77

T.B.M. SPIKE IN PP NO NUMBER STA. 11+60.0 RT. SIDE
 ELEV. 848.69

19 18 17 16 15 14 13 12 11 10

PROFILE	DATE
NO. 483/52-63	



PLAN	DATE
NO. 483/57-58	

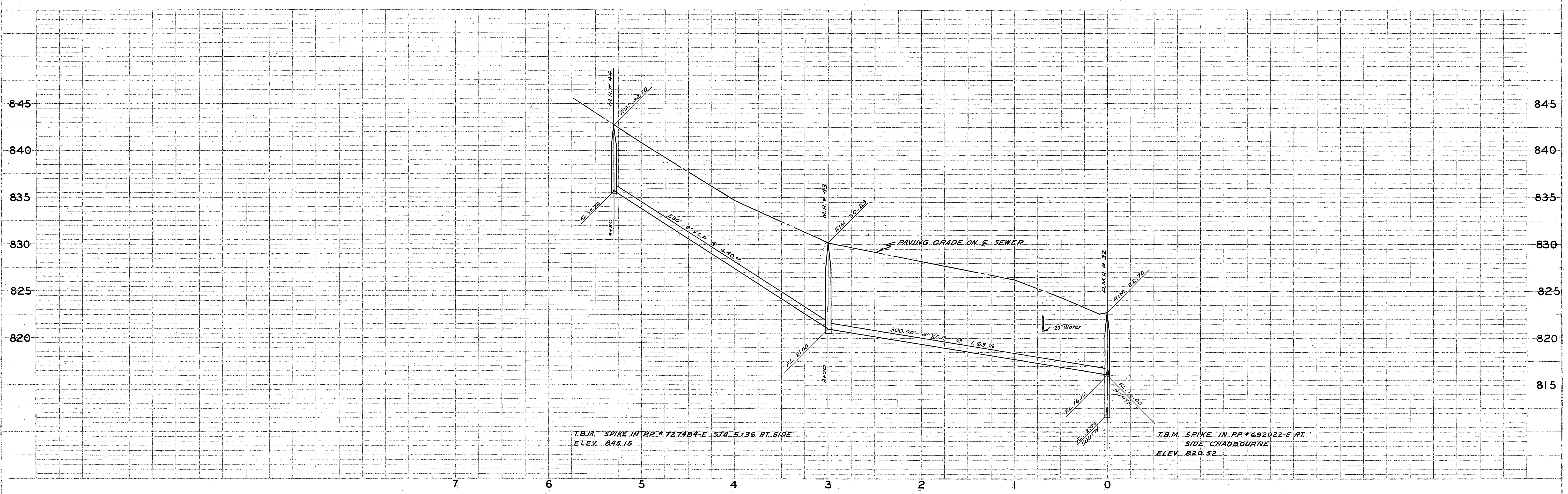
REVISIONS	DATE	BY
	4/12/63	B.E.L.

ASSESSMENT DISTRICT NO. 3
 LA SIERRA COMMUNITY SERVICES DISTRICT
 SANITARY SEWERS
 STOVER AVENUE
 STA. 9+96.70 TO STA. 17+97.20

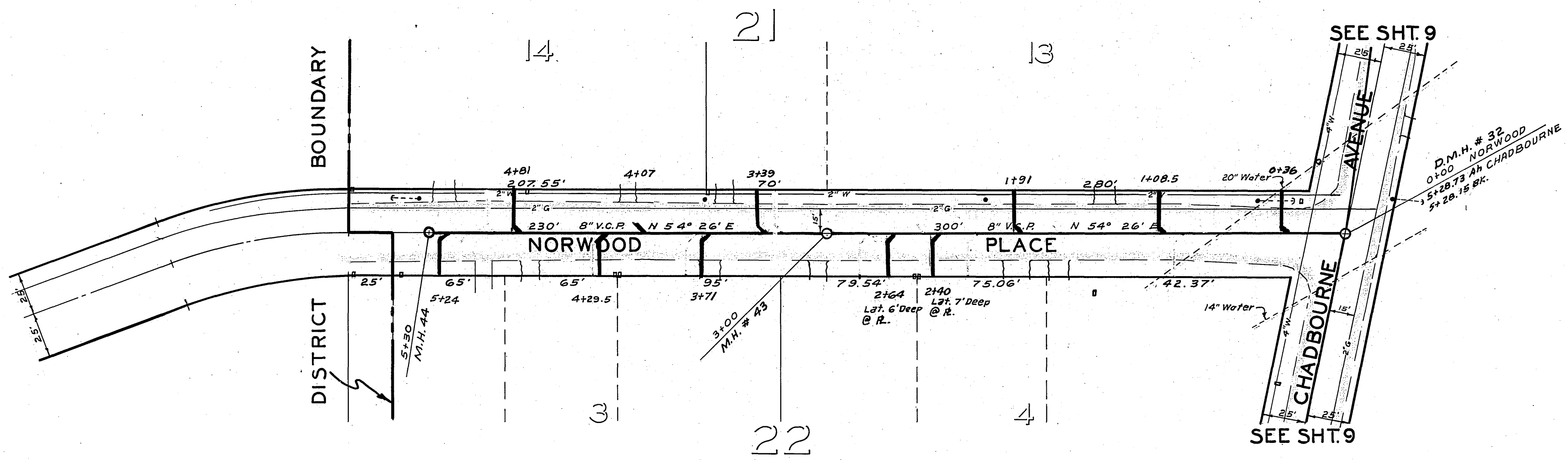
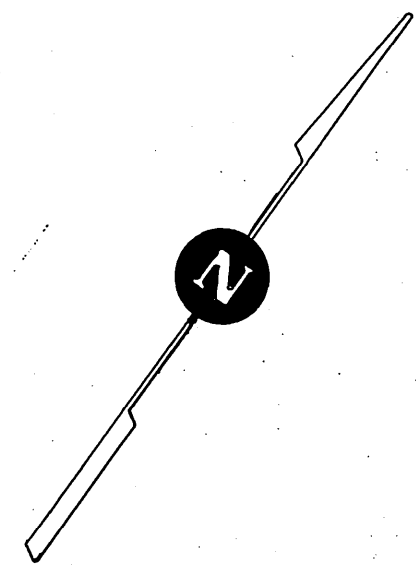
SCALE 1" = 50'
 DATE APR. 1962
 DRAWN B.E.L.
 CHECKED REC
 483

ALBERT A. WEBB ASSOCIATES
 CIVIL ENGINEERS
 RIVERSIDE, CALIFORNIA
 RE. 9876

W.D. 62-40
 SHEET 12
 OF 13
 62-40-B



PROJECT	LA SIERRA COMMUNITY SERVICES DISTRICT
DATE	4/12/63
BY	B.E.L.
CHECKED	
DATE	
BY	



PROJECT	LA SIERRA COMMUNITY SERVICES DISTRICT
DATE	4/12/63
BY	B.E.L.
CHECKED	
DATE	
BY	

"As Built"		4/12/63	B.E.L.
REVISIONS	DATE	BY	
ASSESSMENT DISTRICT NO.3 LA SIERRA COMMUNITY SERVICES DISTRICT SANITARY SEWERS NORWOOD PLACE STA. 0+00 TO STA. 5+30			
SCALE 1" = 50'	DATE APR. 1962	PROJECT 62-40	SHEET 13
DRAWN B.E.L.	DESIGNED ALBERT A. WEISS ASSOCIATES	CITY ENGINEERS	
CHECKED REC	APPROVED <i>[Signature]</i>	CIVIL ENGINEER	
NO. 483	RIVERSIDE, CALIFORNIA	R.E. 9876	62-40-B