

IMPROVEMENT PLANS FOR SANITARY SEWERS

ASSESSMENT DISTRICT NO. 4

LA SIERRA COMMUNITY SERVICES DISTRICT
COUNTY OF RIVERSIDE STATE OF CALIFORNIA

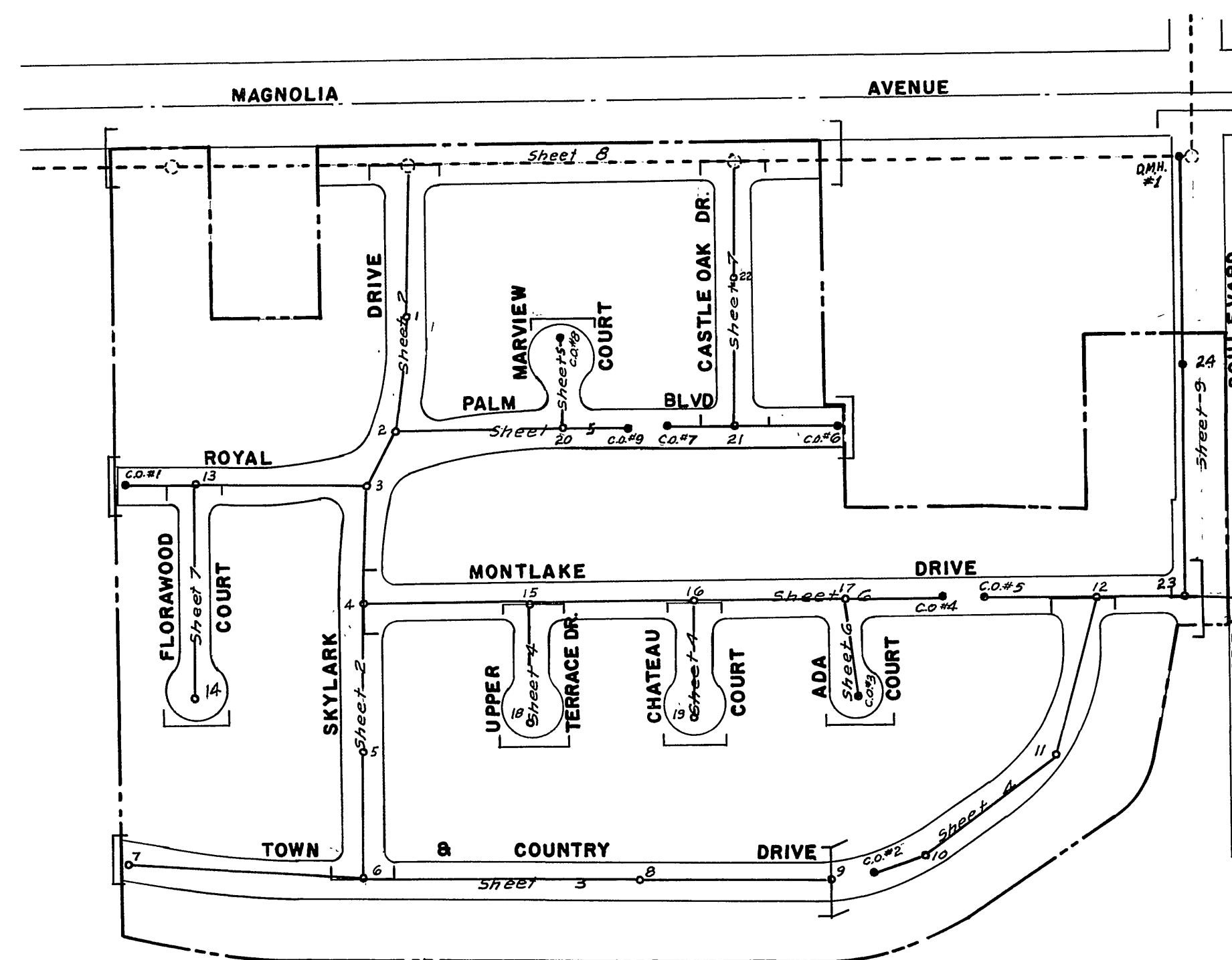
ALBERT A. WEBB ASSOCIATES
CIVIL ENGINEERS
RIVERSIDE CALIFORNIA

DIRECTORS OF LA SIERRA COMMUNITY SERVICES DISTRICT

GEORGE ALLEN, PRESIDENT
K.F. AMBS
WILLIAM LIGHTFELDT
KEITH RICH
WILLARD ARMSTRONG

ESTIMATED QUANTITIES

1. 8" V.C.P. SEWER	7,185	L.F.	- 7211
2. STANDARD MANHOLE (24)	163'5"	V.F.	
3. STANDARD CLEANOUT (9)	53	V.F.	
4. 4" V.C.P. HOUSE CONNECTION	4,487	L.F.	4473
5. 8"x4" V.C.P. WYES	141	EA.	
6. REMOVE & REPLACE A.C. STREET PAVING	28,000 ±	SQ. FT.	
7. STANDARD DROP MANHOLE (1)	3'4"	V.F.	



A P P R O V A L S

APPROVED BY THE LA SIERRA COMMUNITY SERVICES DISTRICT THIS 18
DAY OF June 1963. BY George Allen
GEORGE ALLEN, PRESIDENT

APPROVED THIS 18 DAY OF June 1963 BY A. Hubert Webb
A. HUBERT WEBB R.C.E. 11842
ALBERT A. WEBB ASSOCIATES

GENERAL NOTES

Assessment District No. 4 is served by the following utilities:

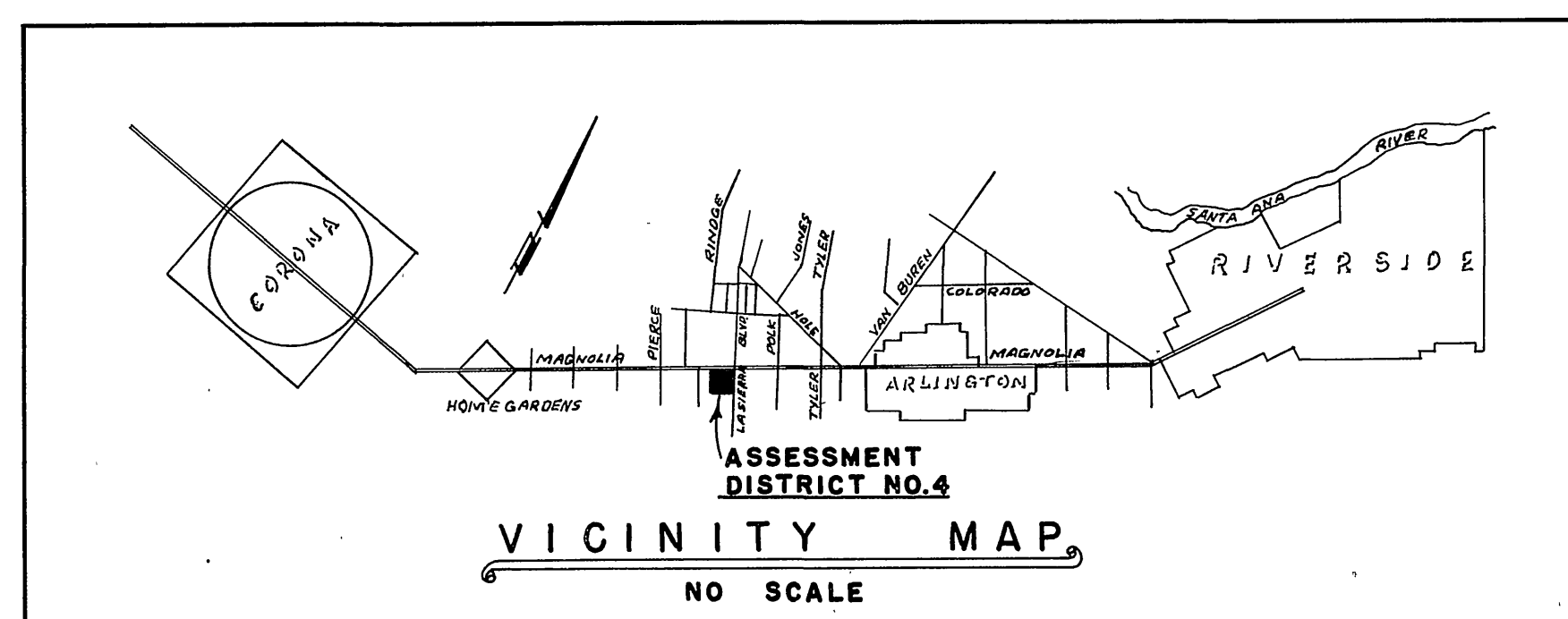
Twin Buttes Water Co. (Irrigation Water)
Southwest Water Co. (Domestic Water)
Southern California Gas Co. (Gas)
Southern California Edison Co. (Power)
Pacific Telephone & Telegraph Co. (Telephone)

Location of existing utilities are approximate and are shown for the benefit of the contractor. It shall be his responsibility to verify same and no responsibility will be assumed by the La Sierra Community Services District for underground obstructions encountered whether shown on the plans or not.

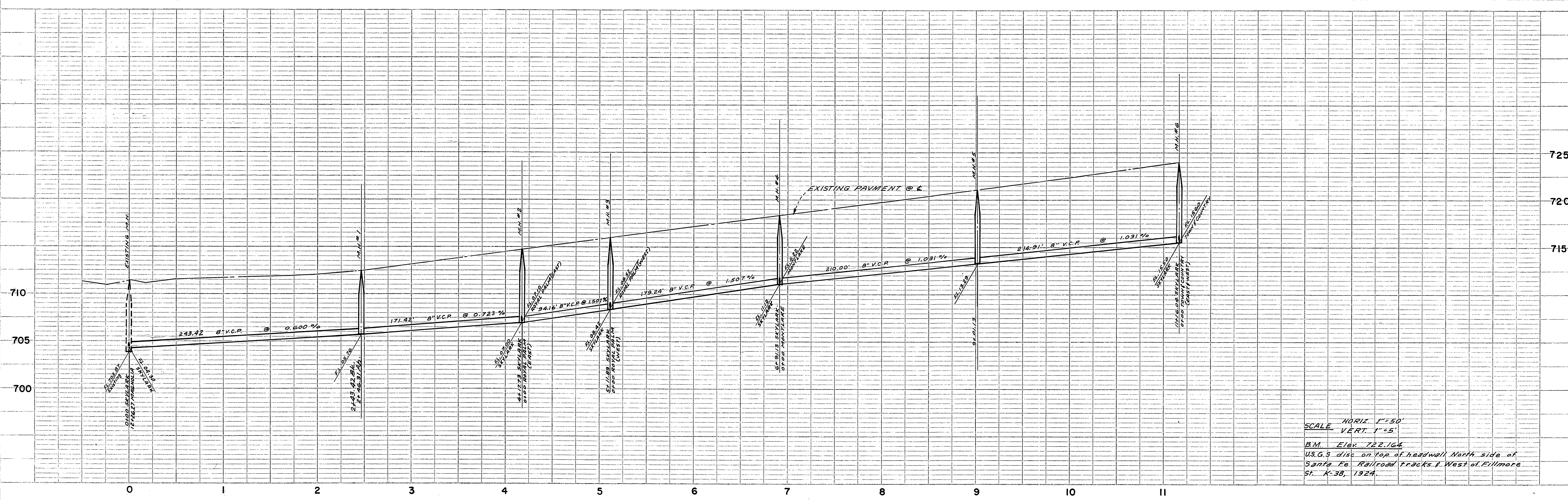
Contractor shall contact Mr. Lloyd E. Waller, Field Supv. for Southwest Water Co. Telephone OY 9-2224, at least 3 working days prior to commencing construction, for any field markings necessary and to inform him of the construction schedule.

CONSTRUCTION NOTES

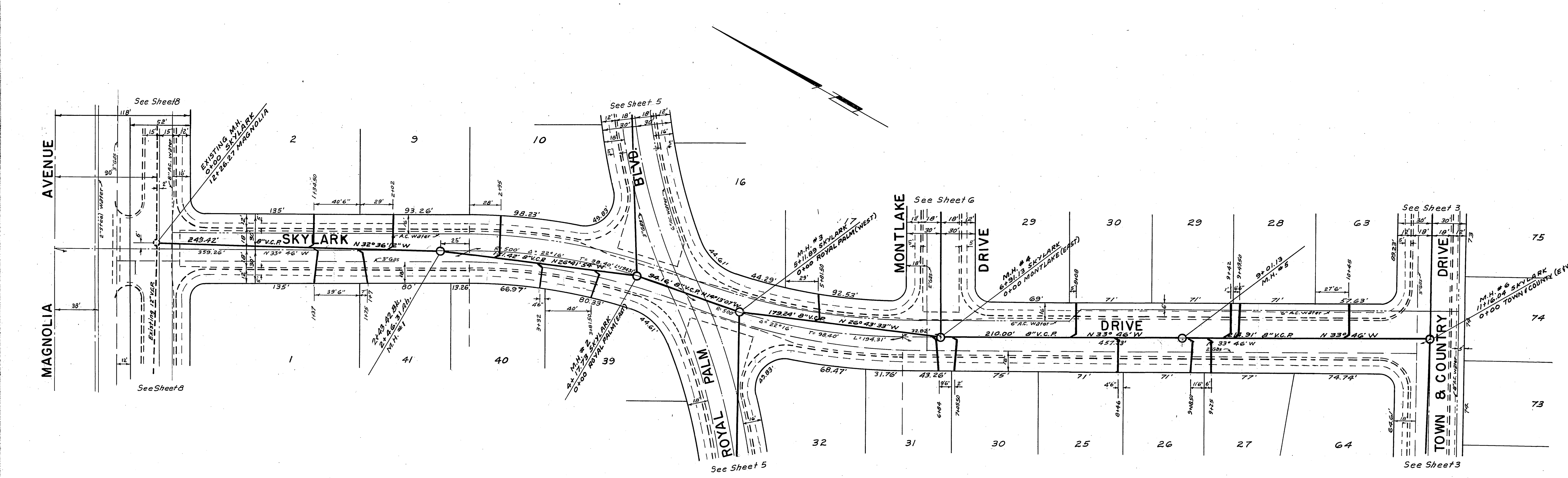
1. House Connection wyes shall be located in the field.
2. The top of all manholes located in pavement shall be brought to paving grade.



"As built"	1-16-64	BEL
8" V.C.P. Quantity Reduced 7.00'	7-21-63	REC
REVISIONS	DATE	BY
ASSESSMENT DISTRICT NO. 4 LA SIERRA COMMUNITY SERVICES DISTRICT		
SANITARY SEWERS INDEX MAP		
SCALE 1" = 200'	DATE Apr. 1963	W.O. 63-22
DRAWN B.E.L.	ALBERT A. WEBB ASSOCIATES	SHEET 1
TRACED	CIVIL ENGINEERS	S-506
CHECKED	RIVERSIDE CALIFORNIA	OF 9 SHEETS
F.B. 5/13	RE. 11842	DWG. NO. 63-22-B



SCALE HORIZ. 1"=50'
 VERT. 1"=5'
 B.M. Elev. 722.164
 U.S.G.S. disc. on top of headwall North side of
 Santa Fe Railroad tracks West of Fillmore
 St. K-38, 1924.



REVISIONS	DATE	BY
"As built"	1-16-64	BEL.
Length of Pipe Revised-0+00 to M.H.#1	9-21-63	REC.

**ASSESSMENT DISTRICT NO. 4
 LA SIERRA COMMUNITY SERVICES DISTRICT**

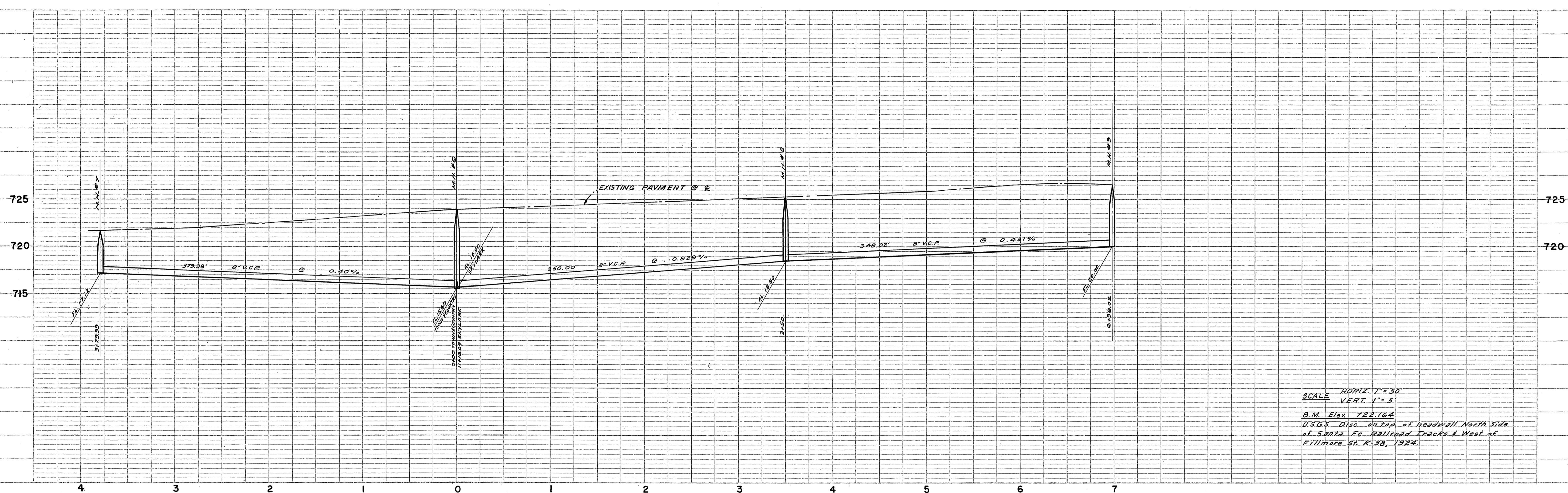
**SANITARY SEWERS
 SKYLARK DRIVE**

SCALE 1"=50'	W.O. 63-22
DATE Apr. 1963	SHEET 2
DRAWN B.E.L.	S-506
TRACED	OF 9 SHEETS
CHECKED J.H.W.	DWG. NO. 63-22-B
P.R. 515	

ALBERT A. WEBB ASSOCIATES
 CIVIL ENGINEERS
 RIVERSIDE, CALIFORNIA
 RE. 11842

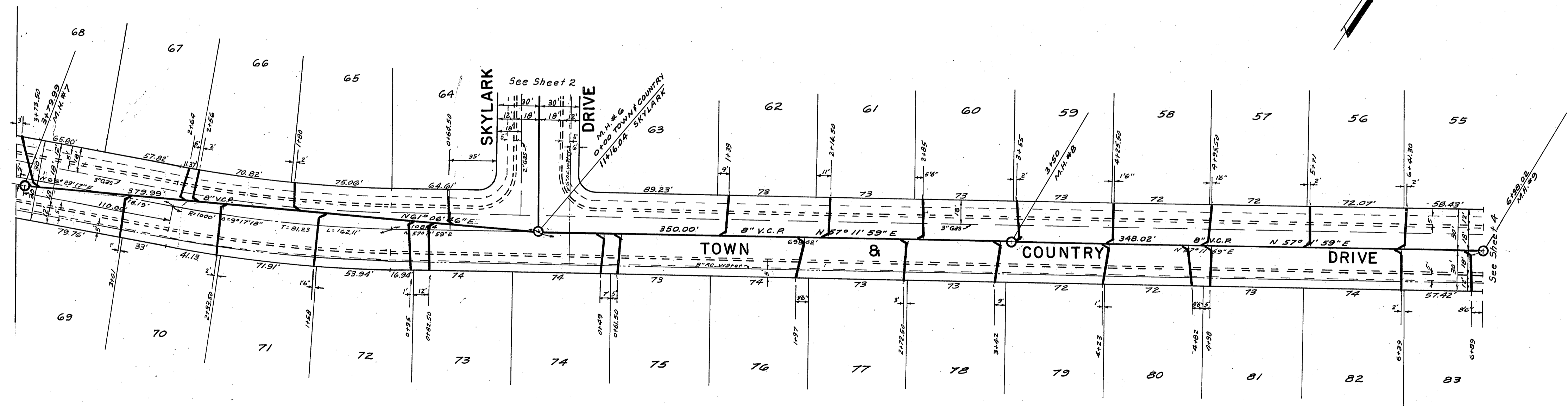
PROFILE SURVEYED
 NOTES CHECKED
 NO. 13, MARCH 1963
 STRUCTURE DRAWINGS CHECKED

PLAN SURVEYED
 NOTES CHECKED
 NO. 13, MARCH 1963
 STRUCTURE DRAWINGS CHECKED



SCALE HORIZ. 1" = 50'
 VERT. 1" = 5'
 B.M. Elev. 722.64
 U.S.G.S. Disc. on top of headwall North Side
 of Santa Fe Railroad Tracks & West of
 Fillmore St. K-38, 1924.

PROFILE	CHECKED	DATE
NOTED	BY	
NOTED	BY	
NOTED	BY	
NOTED	BY	



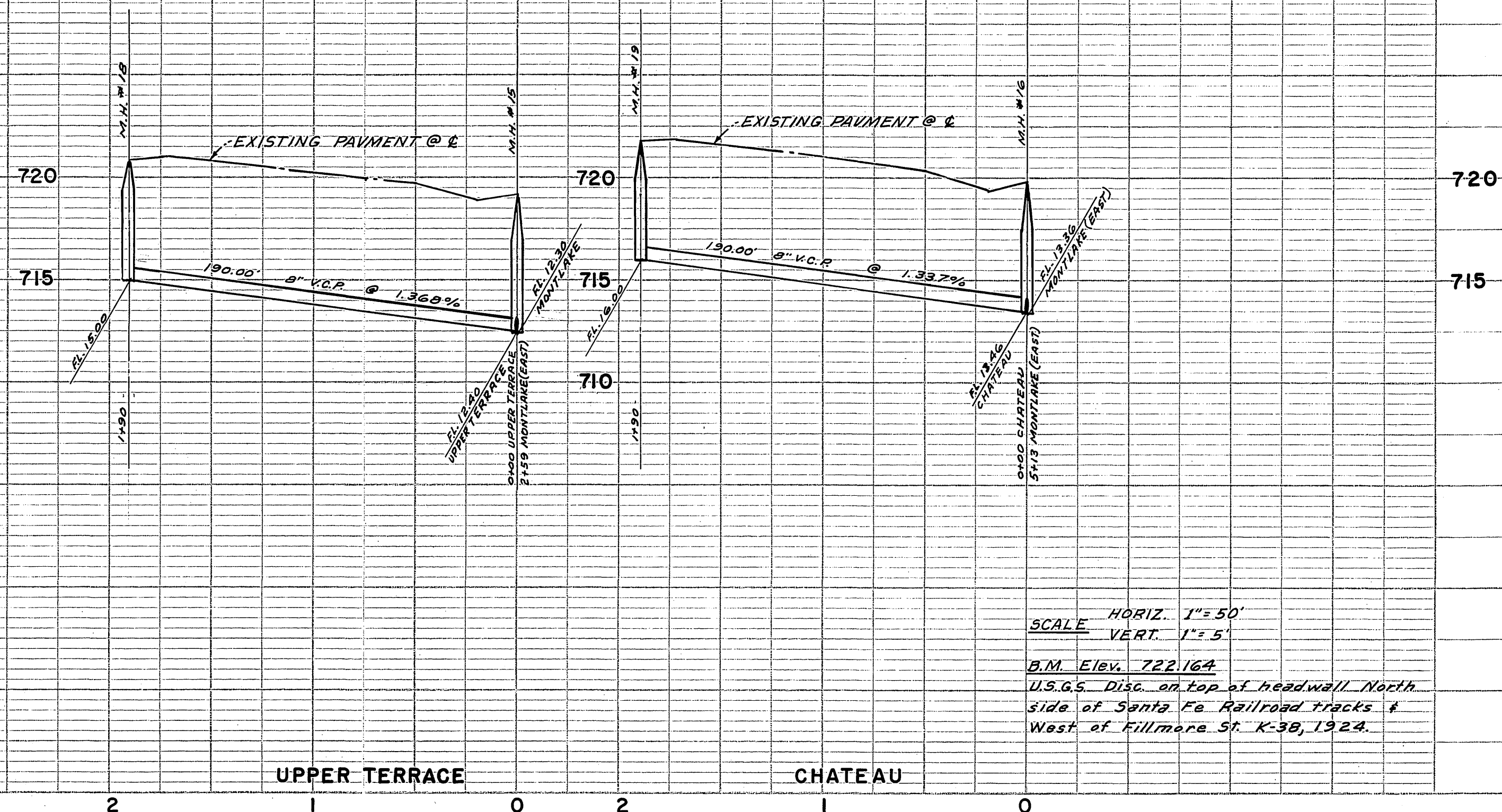
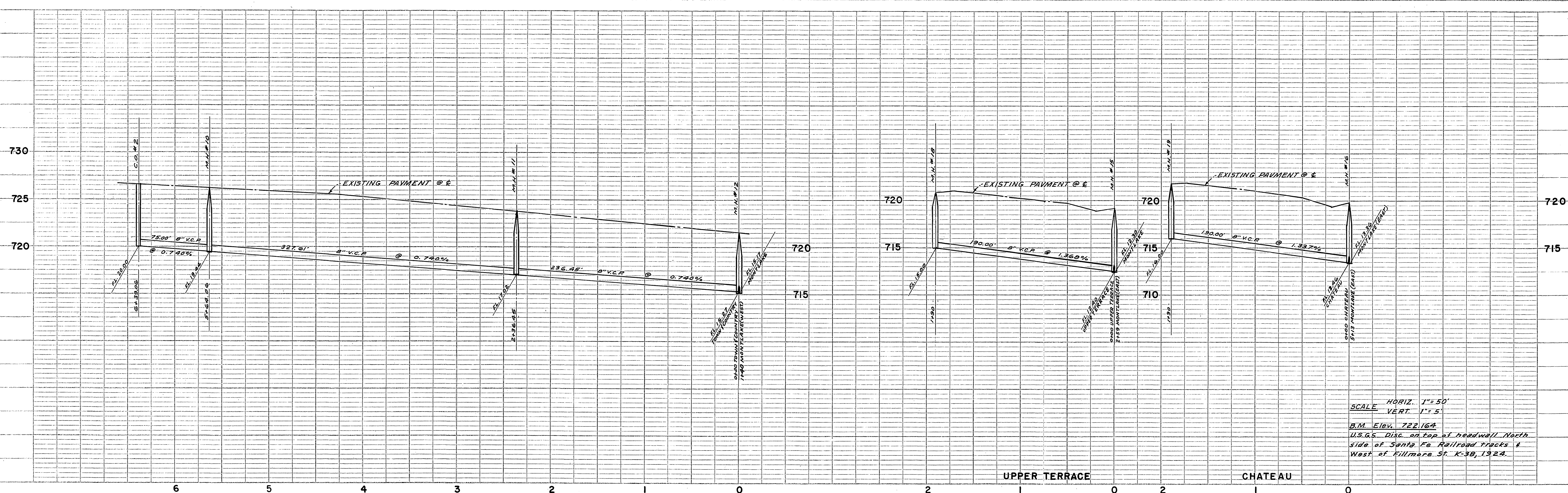
PLAN	CHECKED	DATE
NOTED	BY	
NOTED	BY	
NOTED	BY	
NOTED	BY	

"As built"	11/16/64	BEL
REVISIONS	DATE	BY

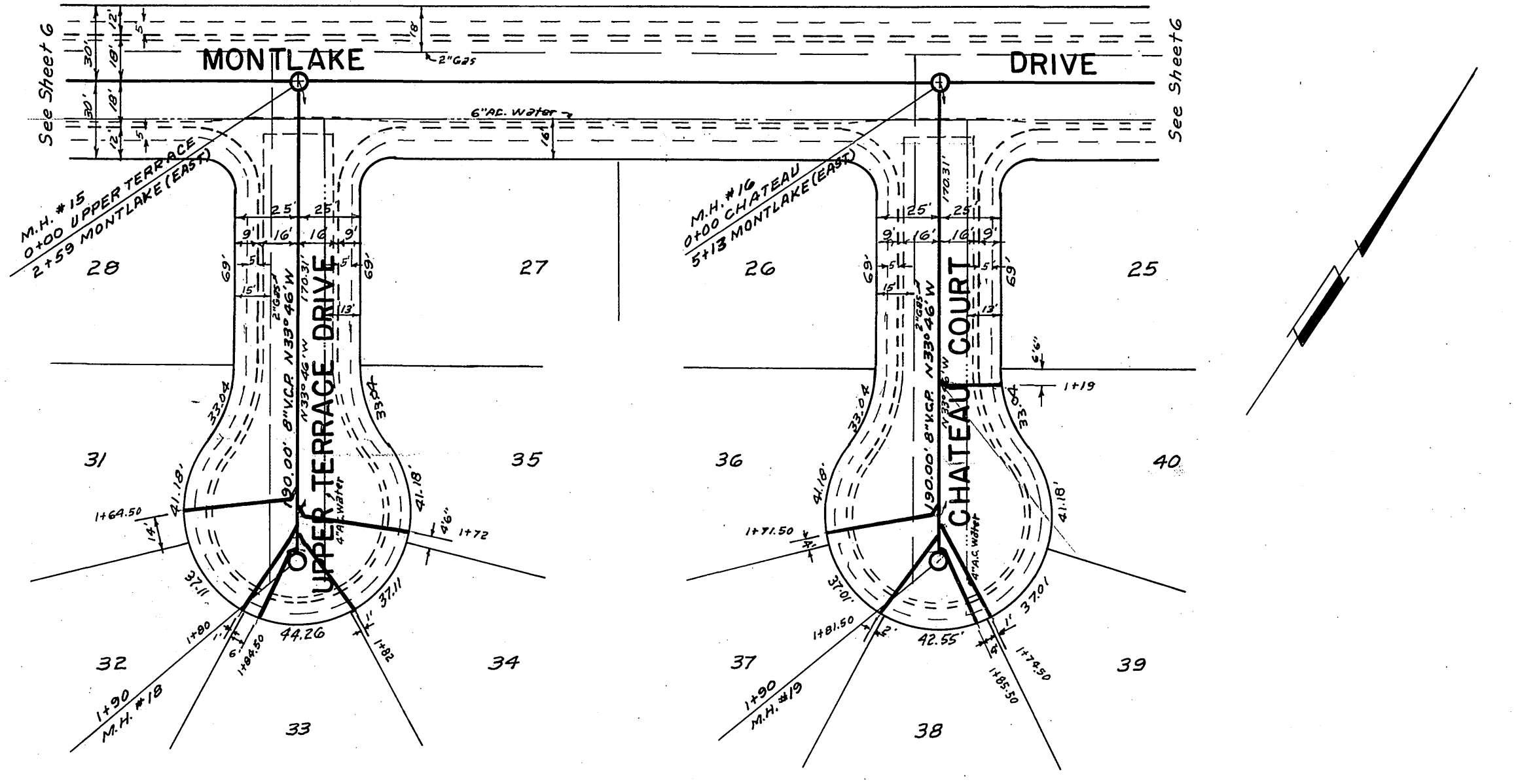
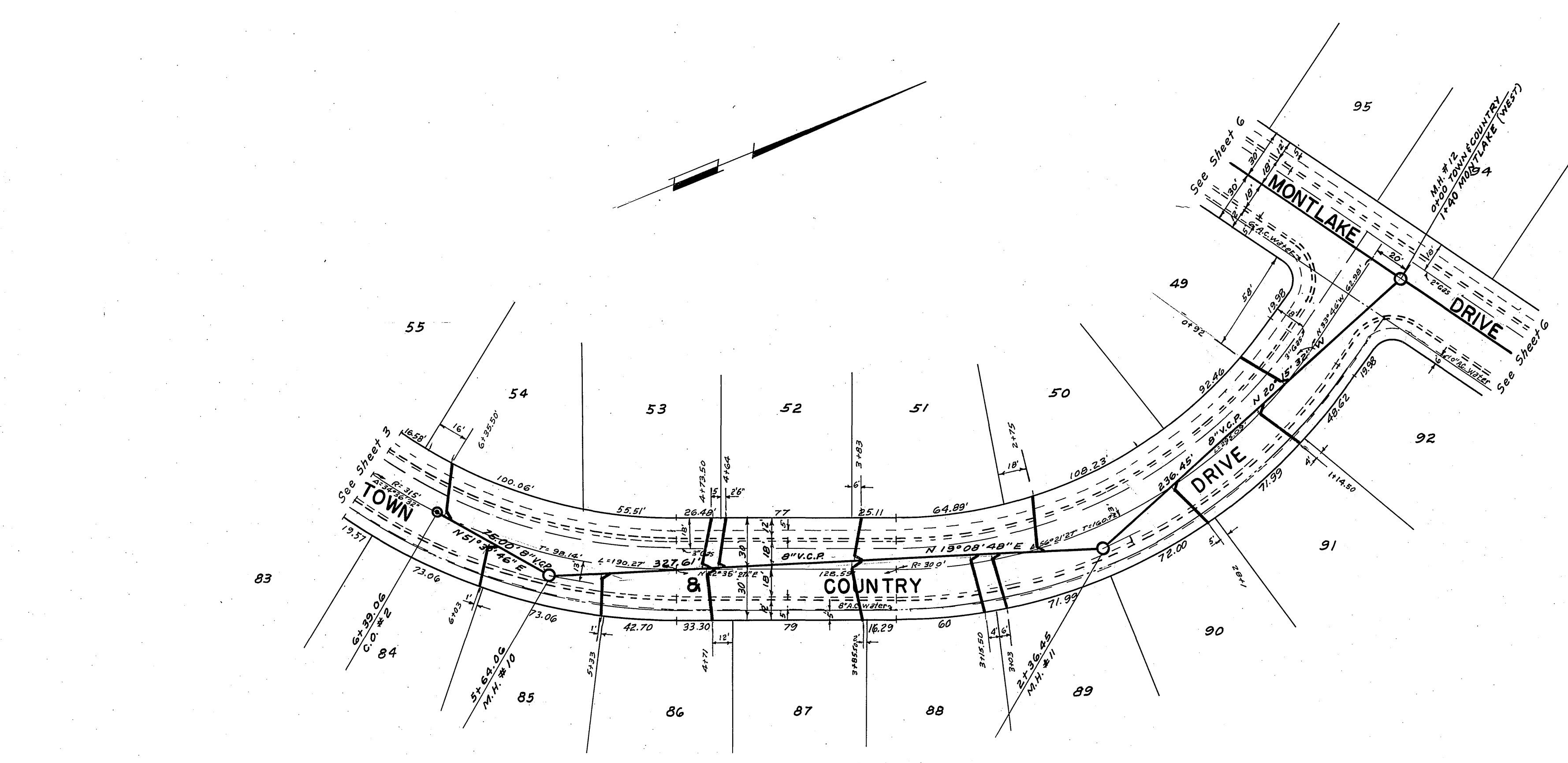
ASSESSMENT DISTRICT NO. 4
 LA SIERRA COMMUNITY SERVICES DISTRICT

SANITARY SEWERS
 TOWN & COUNTRY DRIVE

SCALE 1" = 50'	DATE Apr. 1963	DRAWN BEL	TRACED	CHECKED <i>[Signature]</i>	F.B. 513
ALBERT A. WEBB ASSOCIATES CIVIL ENGINEERS RIVERSIDE CALIFORNIA RE. 11042					W.O. 63-22
SHEET 3 S-506 OF 9 SHEETS					DWG. NO. 63-22-B



SCALE HORIZ. 1" = 50'
 VERT. 1" = 5'
 B.M. Elev. 722.164
 U.S.G.S. Disc. on Top of headwall North
 side of Santa Fe Railroad tracks &
 West of Fillmore St. K-30, 1924.



REVISIONS	DATE	BY
"As built"	1/16/64	B.E.L.

ASSESSMENT DISTRICT NO. 4
 LA SIERRA COMMUNITY SERVICES DISTRICT
 SANITARY SEWERS
 TOWN & COUNTRY, UPPER TERRACE DRIVE
 CHATEAU COURT

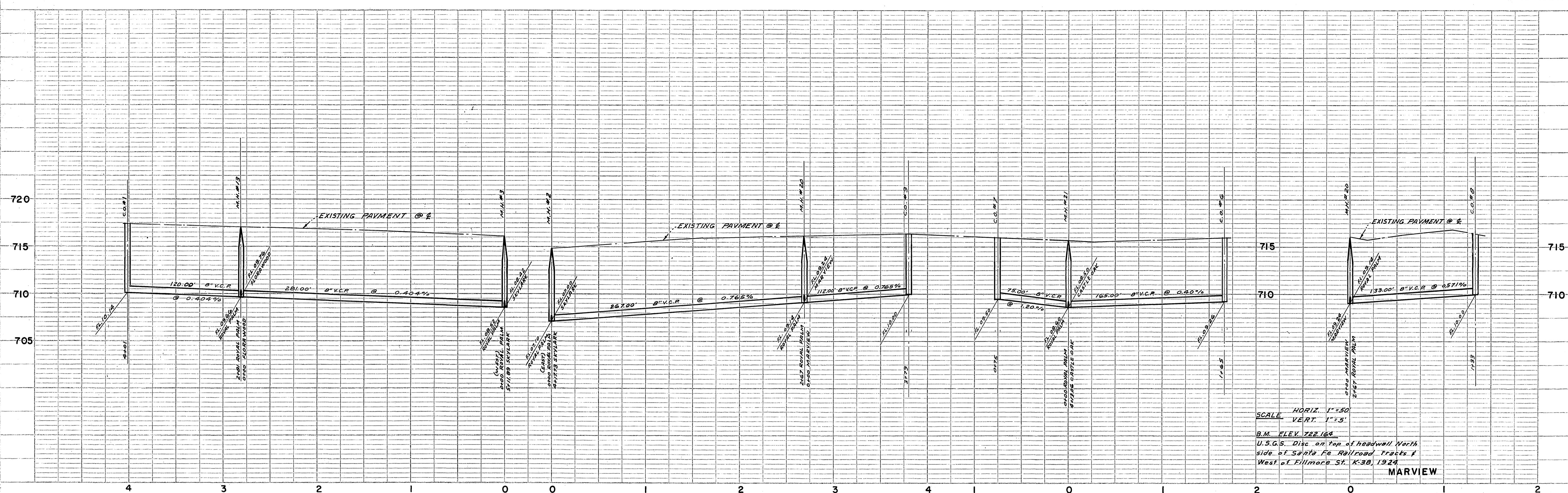
SCALE 1" = 50'
 DATE Apr. 1963
 DRAWN B.E.L.
 TRACED
 CHECKED
 F.S. 5/3

ALBERT A. WEBB ASSOCIATES
 CIVIL ENGINEERS
 RIVERSIDE CALIFORNIA
 RE. 11842

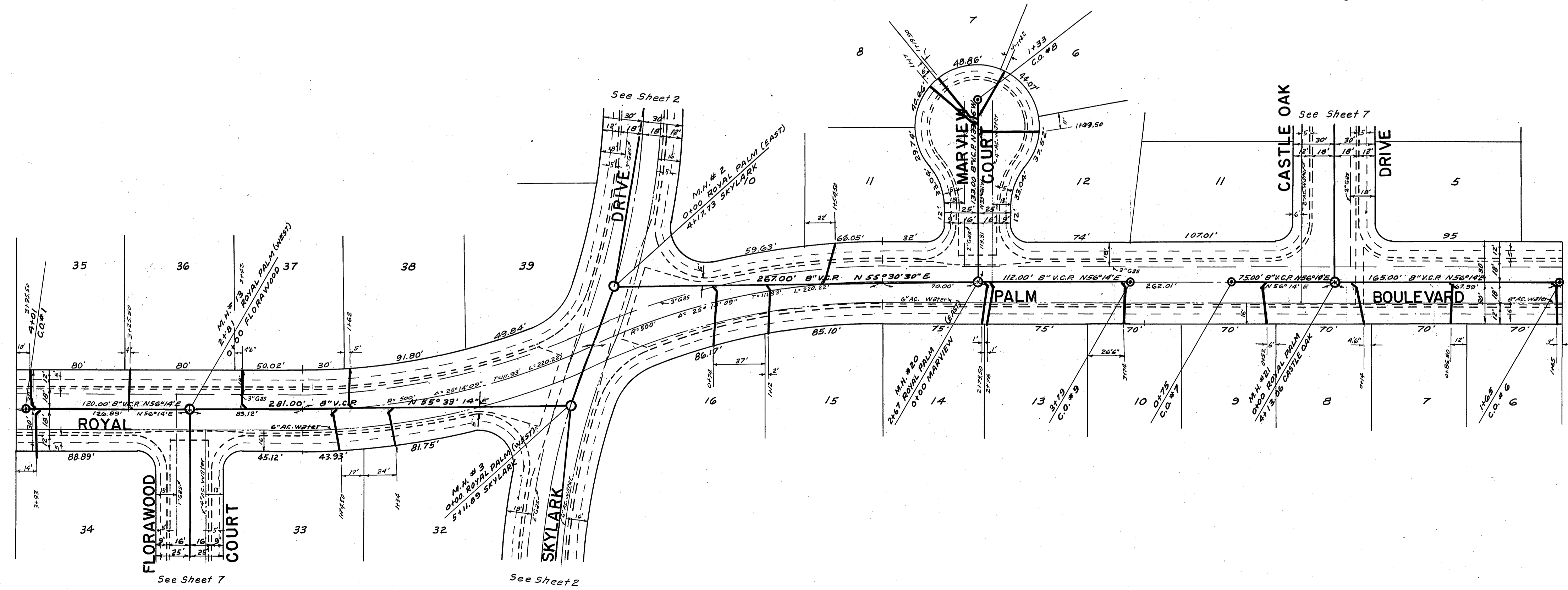
W.O. 63-22
 SHEET 4
 S-506
 OF 9 SHEETS
 DWG. NO. 63-22-B

PROFILE SURVEYED
 PLOTTED
 GRADES CHECKED
 STRUCTURE MODALITIES CHECKED

PLAN SURVEYED
 PLOTTED
 ALIGNMENT CHECKED
 R.F. & W.M. CHECKED



SCALE HORIZ. 1"=50'
 VERT. 1"=5'
 B.M. ELEV. 722.169
 U.S.G.S. Disc on Top of headwall North
 side of Santa Fe Railroad tracks &
 West of Fillmore St. K-30, 1924
MARVIEW



REVISIONS	DATE	BY
"As Built"	2/1/64	BEL

ASSESSMENT DISTRICT NO. 4
 LA SIERRA COMMUNITY SERVICES DISTRICT
 SANITARY SEWERS
 ROYAL PALM BLVD. & MARVIEW CT.

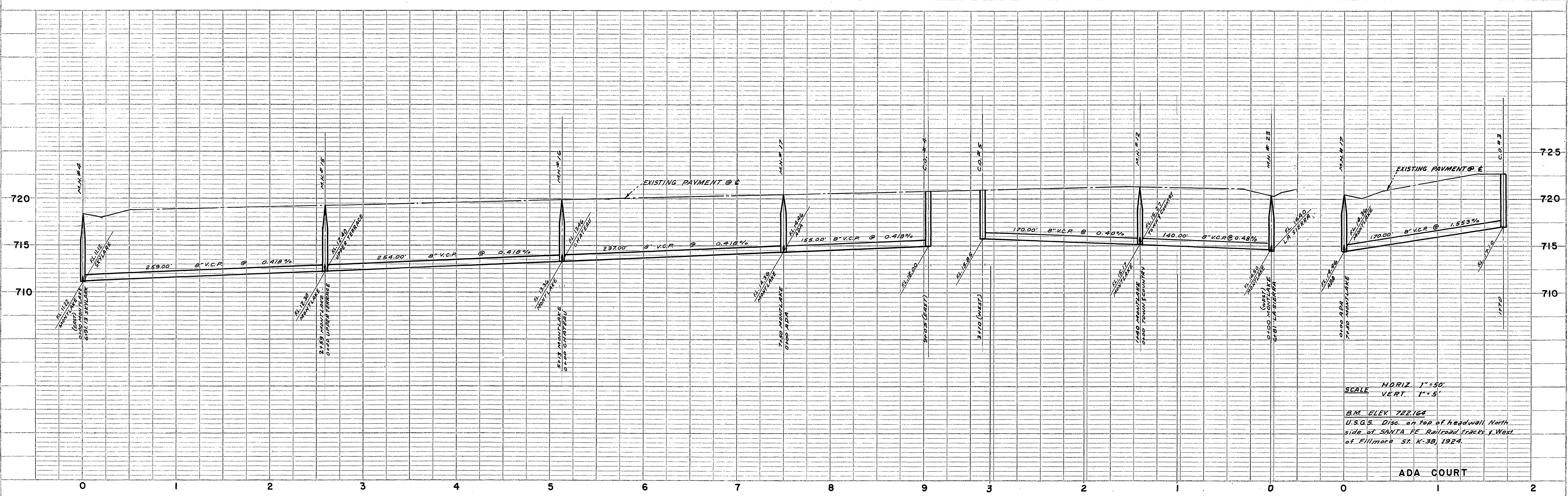
SCALE 1"=50'
 DATE Apr. 1963
 DRAWN B.E.L.
 TRACED
 CHECKED *[Signature]*
 P.B. 573

ALBERT A. WEBB ASSOCIATES
 CIVIL ENGINEERS
 RIVERSIDE CALIFORNIA
 RE. 11842

W.O. 63-22
 SHEET 5
S-506
 OF 9 SHEETS
 DWG. NO.
 63-22-B

PROFILE	SURVEYED	DATE
NOTE BOOK	PLOTTED	
NO.	ALIGNED	
	CHECKED	
	BY	
	DATE	
	BY	
	DATE	

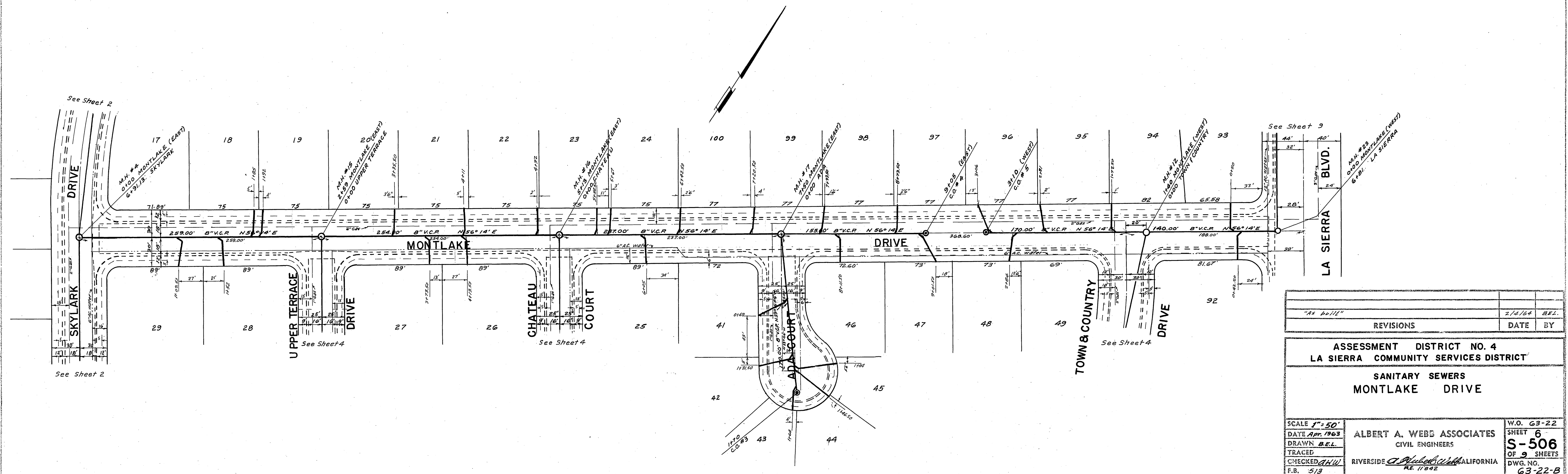
PLAN	SURVEYED	DATE
NOTE BOOK	PLOTTED	
NO.	ALIGNED	
	CHECKED	
	BY	
	DATE	
	BY	
	DATE	



SCALE HORIZ. 1"=50'
 VERT. 1"=5'

B.M. ELEV 722.64
 U.S.G.S. Disc. on top of headwall North
 side of SANTA FE Railroad tracks West
 of Fillmore St. K-3B, 1924.

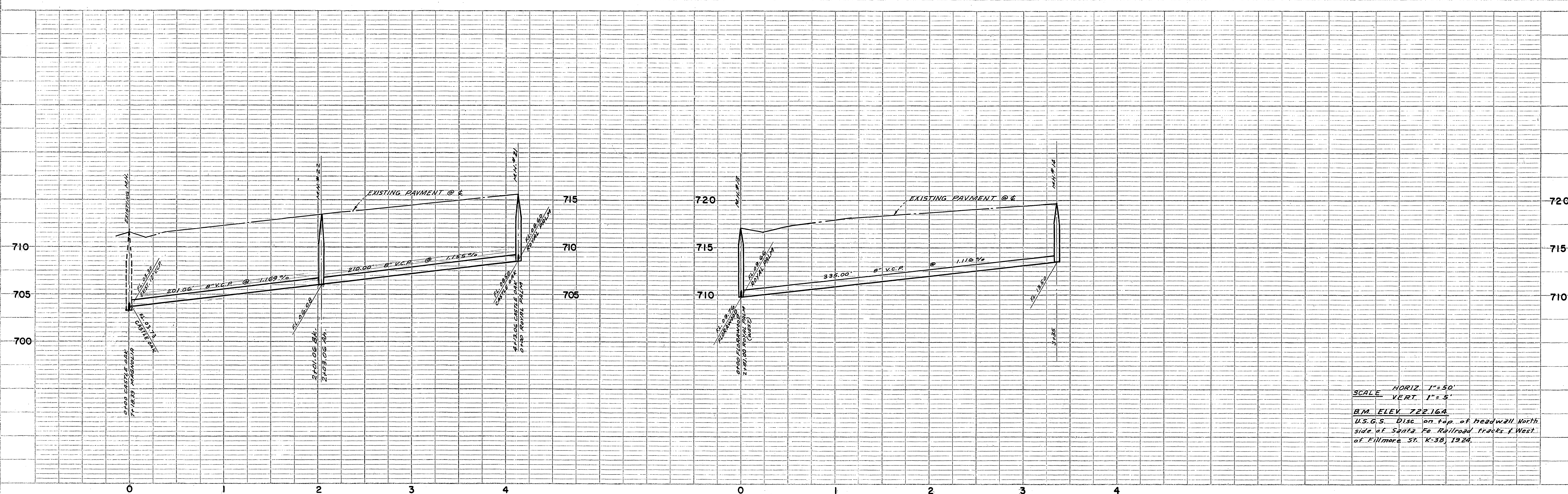
PROFILE	SURVEYED	BY	DATE
NOTED	FLIPPED		
NO. 1	NO. 2		
STRUCTURE	NO. 3		



PLAN	SURVEYED	BY	DATE
NOTED	FLIPPED		
NO. 1	NO. 2		
STRUCTURE	NO. 3		

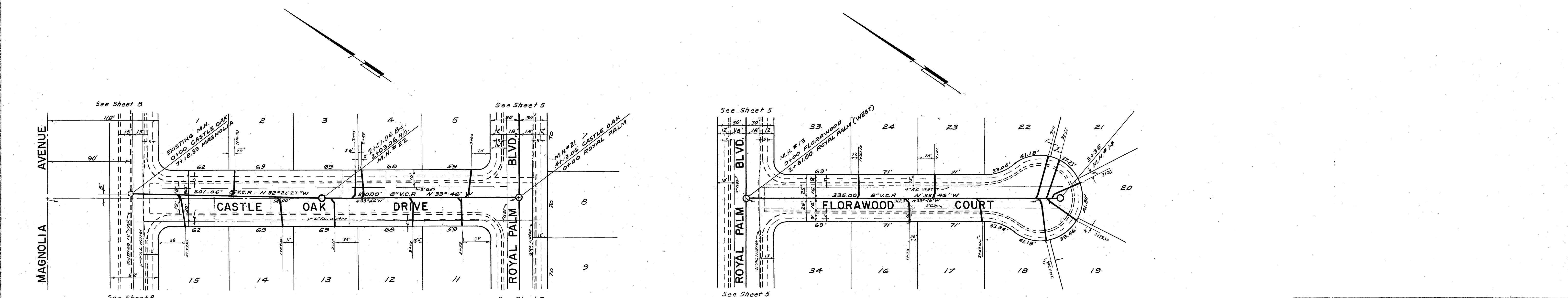
"AS BUILT"	2/2/64	BEL.
REVISIONS	DATE	BY
ASSESSMENT DISTRICT NO. 4 LA SIERRA COMMUNITY SERVICES DISTRICT		
SANITARY SEWERS MONTLAKE DRIVE		
SCALE 1"=50'	DATE Apr. 1963	W.O. 63-22
DRAWN BEL	TRACED	SHEET 6
CHECKED JHW	F.B. 513	OF 9 SHEETS
		DWG. NO. S-506
		63-22-B

ALBERT A. WEBB ASSOCIATES
 CIVIL ENGINEERS
 RIVERSIDE CALIFORNIA
 RE 11642



SCALE HORIZ. 1" = 50'
 VERT. 1" = 5'

B.M. ELEV. 722.164
 U.S.G.S. Disc. on top of headwall North
 side of Santa Fe Railroad tracks West
 of Fillmore St. K-38, 1924.



REVISIONS	DATE	BY
"As built"	2/5/64	BEL
Pipe Length Revised 0+00 to M.H. # 22	9-21-63	REC

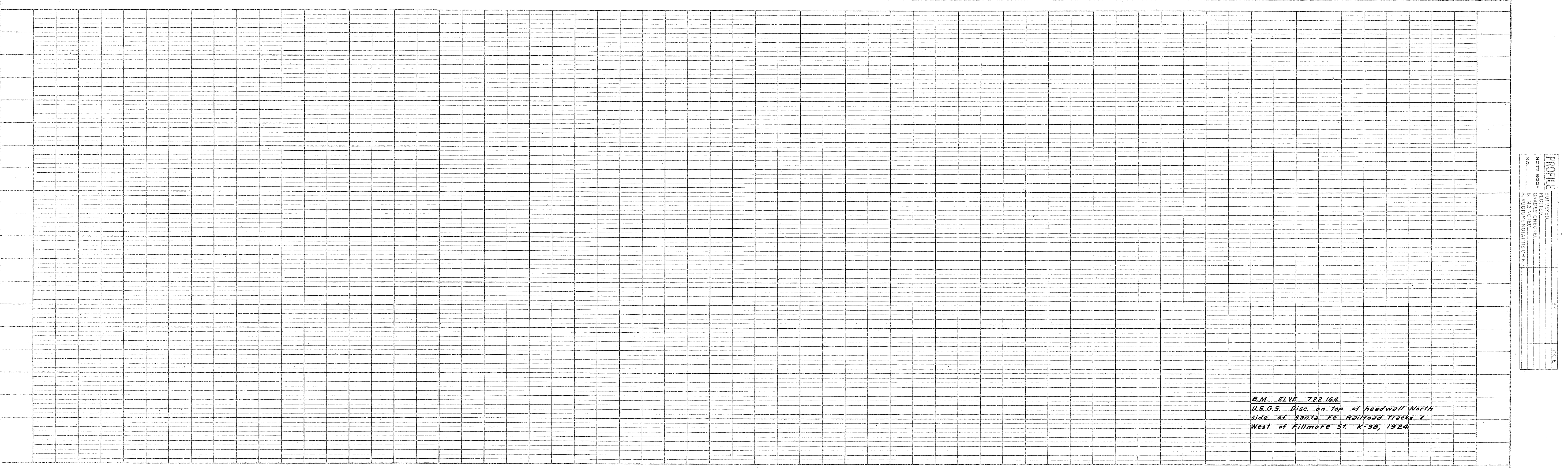
ASSESSMENT DISTRICT NO. 4
 LA SIERRA COMMUNITY SERVICES DISTRICT

SANITARY SEWERS
 CASTLE OAK DRIVE & FLORAWOOD CT.

SCALE 1" = 50'	ALBERT A. WEBB ASSOCIATES CIVIL ENGINEERS RIVERSIDE, CALIFORNIA	W.O. 63-22
DATE Apr. 1963		SHEET 7
DRAWN BEL		S-506
TRACED		OF 9 SHEETS
CHECKED THW F.B. 5/13		DWG. NO. 63-22-B

PROF. SURVEYED	DATE
NOTE BOOK	
SPICES CHECKED	
B.M. NOTED	
STRUCTURE DIMENSIONS	

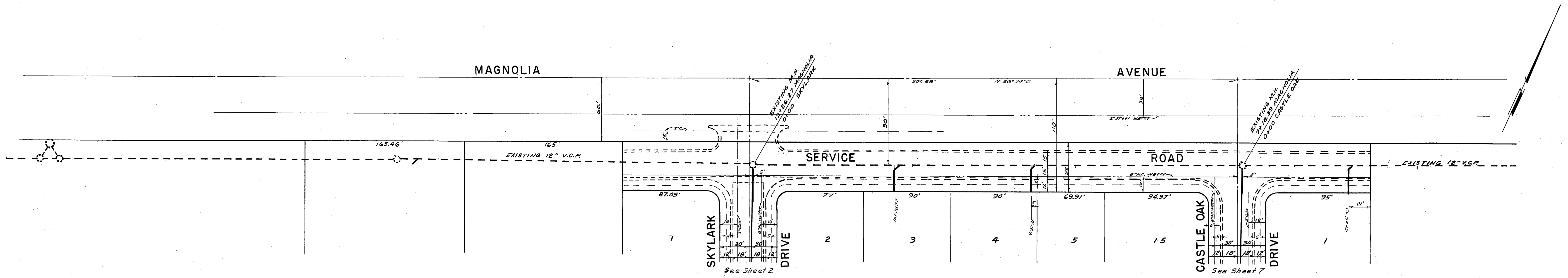
PLAN SURVEYED	DATE
NOTE BOOK	
ODDIT CHECKED	
RT. OF WAY CHECKED	



B.M. ELVE 722.164
 U.S.G.S. Disc. on Top of headwall North
 side of Santa Fe Railroad tracks 1
 West of Fillmore St. K-38, 1924.

PROFILE

DATE	
BY	
CHECKED	
NOTED	
NO.	



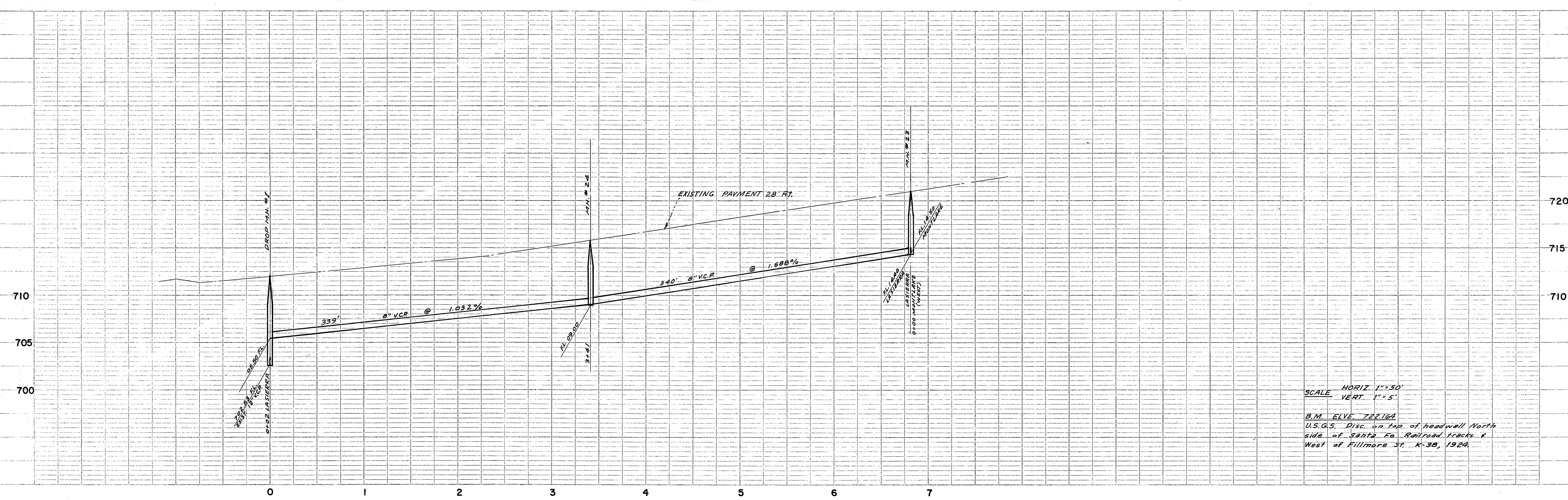
PLAN

DATE	
BY	
CHECKED	
NOTED	
NO.	

REVISIONS	DATE	BY
"As built"	2/5/64	BEL

ASSESSMENT DISTRICT NO. 4
 LA SIERRA COMMUNITY SERVICES DISTRICT
 SANITARY SEWERS
 MAGNOLIA AVENUE

SCALE 1" = 50'	ALBERT A. WEBB ASSOCIATES CIVIL ENGINEERS RIVERSIDE, CALIFORNIA	W.O. 63-22
DATE Apr. 1963		SHEET 8
DRAWN BEL	S-506	
TRACED		OF 9 SHEETS
CHECKED [Signature]		DWG. NO. 63-22-B
F.S. 513	RE. 118-62	



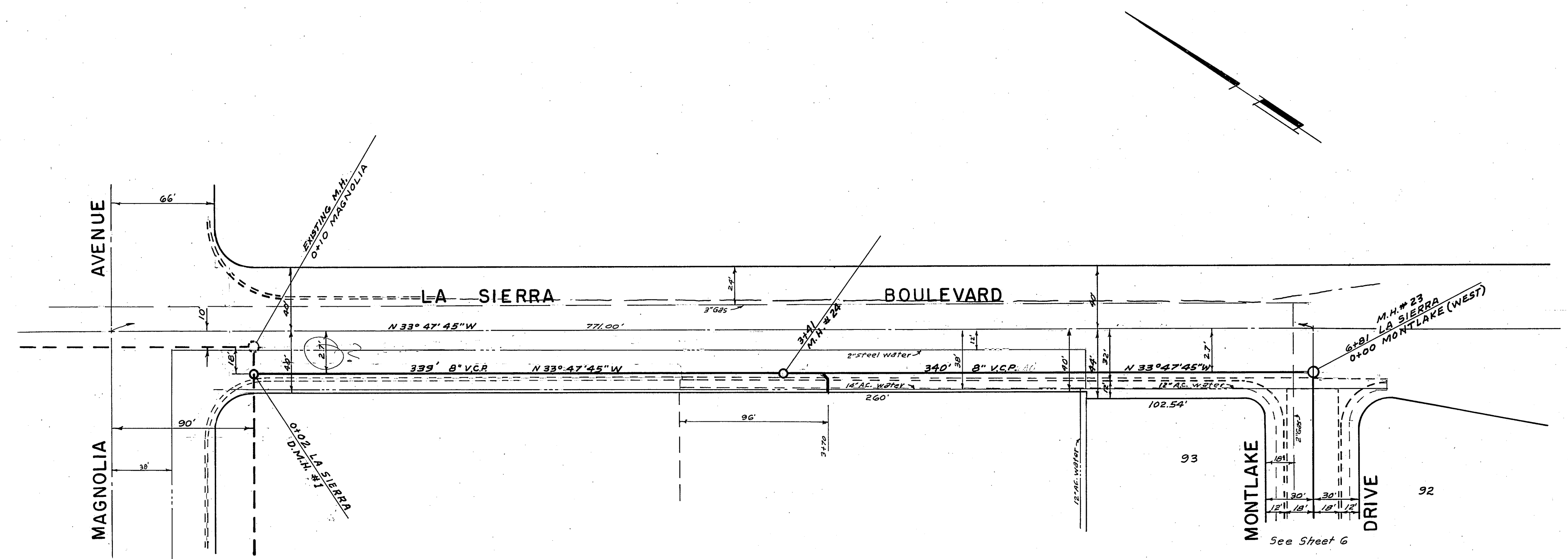
SCALE HORIZ. 1" = 30'
 VERT. 1" = 5'

B.M. ELVE 722.164
 U.S.G.S. Disc. on Top of headwall North
 side of Santa Fe Railroad tracks &
 West of Fillmore St. K-38, 1924

PROFILE

DATE	
BY	
CHECKED	
DESIGNED	
PLANNED	
NOTED	
NO. 1	
STRUCTURE	

720
 715
 710
 705
 700



PLAN

DATE	
BY	
CHECKED	
DESIGNED	
PLANNED	
NOTED	
NO. 1	
STRUCTURE	

"As built"	2/5/64	BAL.
Pipe Length Revised 0102 to M.H. # 24	9-21-63	REC
REVISIONS	DATE	BY

ASSESSMENT DISTRICT NO. 4
 LA SIERRA COMMUNITY SERVICES DISTRICT

SANITARY SEWERS
 LA SIERRA BOULEVARD

SCALE 1" = 50'	DATE Apr 1963	W.O. 63-22
DRAWN BEL	TRACED	SHEET 9
CHECKED AW	R.B. 513	S-506
ALBERT A. WEBB ASSOCIATES CIVIL ENGINEERS RIVERSIDE, CALIF.		9-22-B