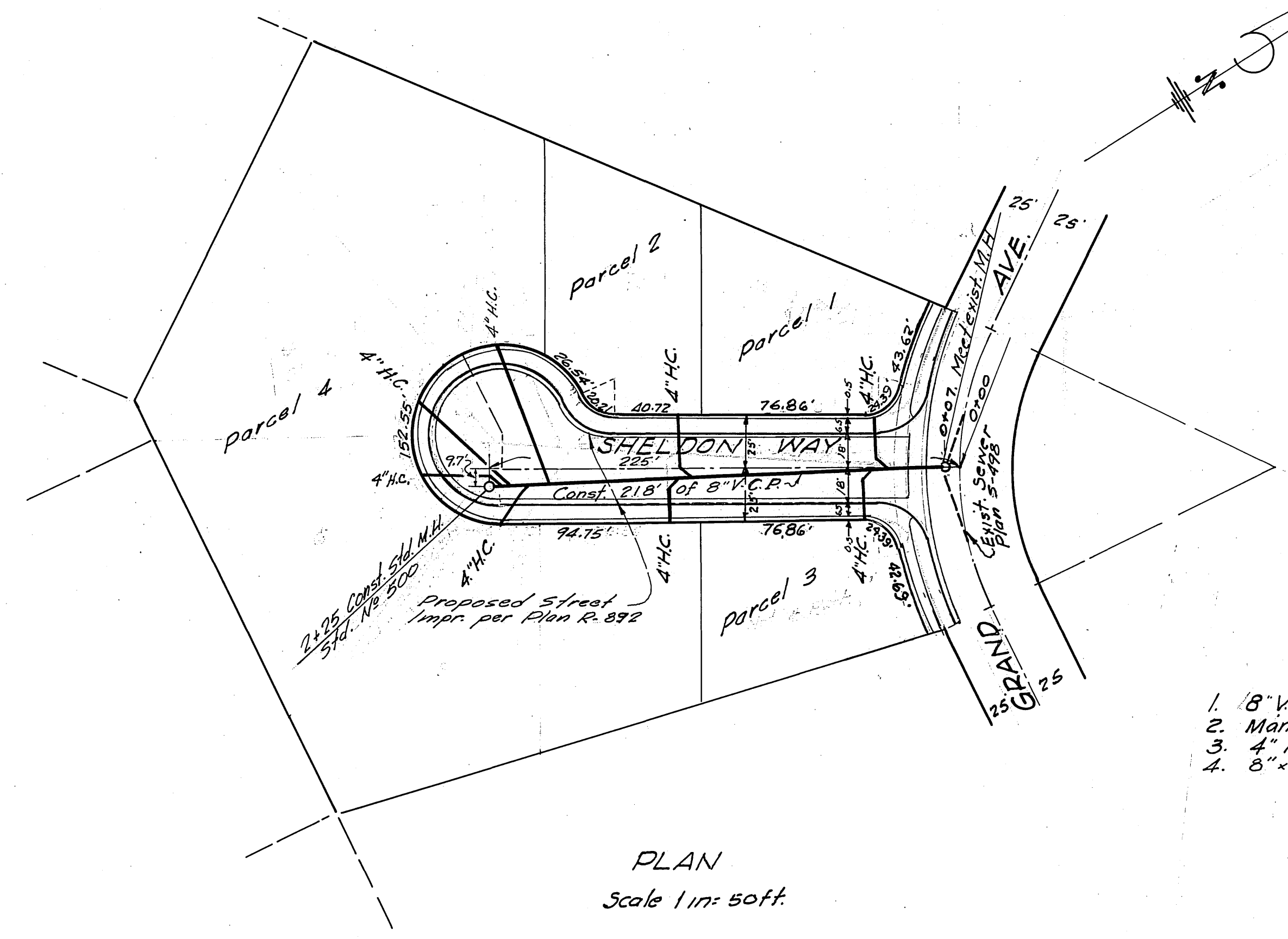


PROFILE  
Scale 1/16" = 50' Hor.  
1/4" = 5' Vert.



PLAN  
Scale 1/16" = 50' ft.

- Quantities
1. 8" V.C.P. sewer Lineal ft ----- 218'
  2. Manhole ----- 1
  3. 4" House connections lin. ft ----- 270
  4. 8" x 4" wyes ----- 8

GENERAL NOTES

1. Location of Wyes and house connection laterals to be determined on the job.
2. Manhole frames and covers to be set to existing paving grades.
3. Permanent paving after backfill to be the responsibility of the Paving Contractor.
4. Construction shall be in accordance with the City of Riverside, Dept. of Public Works, Std. Specs. No. 461 and Std. Dwg.
5. It shall be the responsibility of the contractor to clear the R/W in accordance with the provisions of the law as it affects each utility incl. irrigation lines and appurtenances & at no cost to the City.
6. Joints in V.C.P. sewers shall conform to ASTM Std C-425-60T, or the latest revision thereof.
7. Pipe shall be bedded per Case II, Std. Dwg. No. 452.

NOT BUILT  
R/S D

Bench Mark: Chisler "Q" in West corner of 3' sidewalk, N.E. corner of Tyler St. & Arlington Ave. Elevation: 780.46

Approved August 6, 1963

Erly M. Davidson, Mayor  
LA SIERRA COMMUNITY SERVICE DIST.

CRAWLEY & HAWKINS

SURVEYORS AND ENGINEERS  
Riverside, California  
Approved: George O. Crawley, No. 9455  
Field By: 7/19/77, Date: 7-20-63, Rev. 6/25/64

CITY OF RIVERSIDE, CALIFORNIA  
DEPARTMENT OF PUBLIC WORKS  
SEWER PLAN & PROFILE  
SHELDON WAY  
STA. 0+07 to STA. 2+35

R/S 837

5-509  
8-0-64

DATE	BY	DESCRIPTION
		PROFILE
		REVISED
		NOTED
		BY: JAMES G. HARRIS
		DATE: 7/19/77
		NO. 9455

DATE	BY	DESCRIPTION
		PLAN
		REVISED
		NOTED
		BY: JAMES G. HARRIS
		DATE: 7/19/77
		NO. 9455