

TREATMENT OF SEWERS NORTH OF FREEWAY

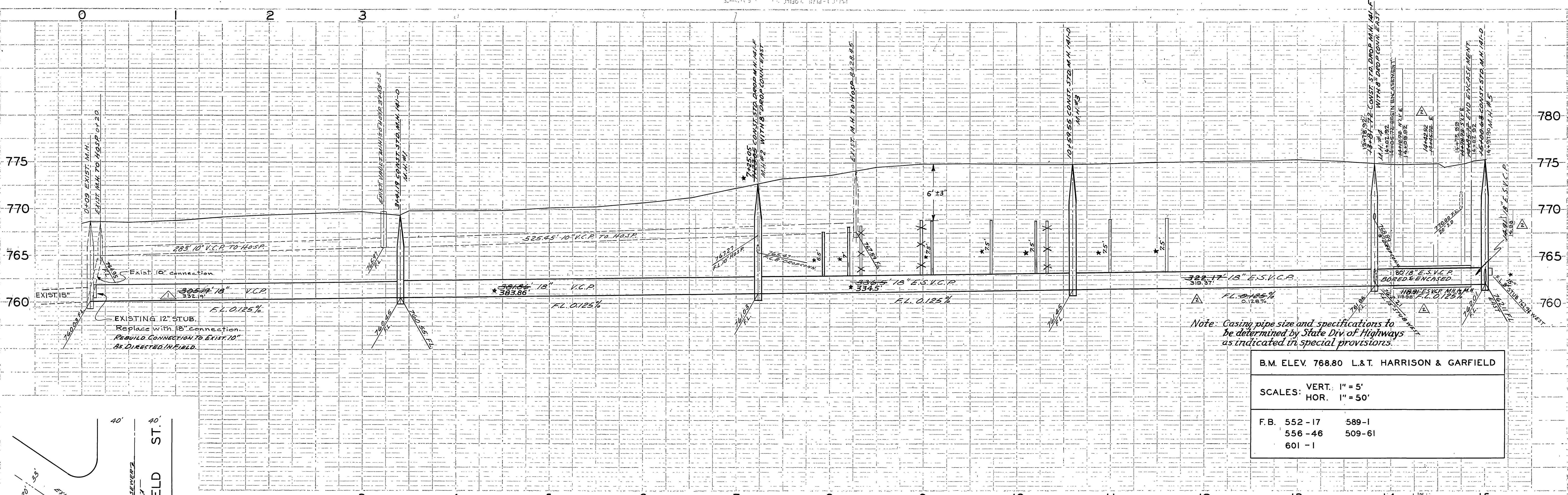
- VAN BUREN BLVD. - M.H. TO REMAIN IN PLACE. CONTRACTOR TO PLUG PIPE ON UPSTREAM SIDE OF M.H.
- FARNHAM PL. - REMOVE & SALVAGE THE M.H. & C.O. CASTINGS IN FREEWAY R/W FOR USE ON THIS JOB. CONST. STD. M.H. 141-D 50' NLY. OF THE NLY. EXIST. M.H. IN FREEWAY R/W. M.H. DEPTH IS 6'±. BACKFILL M.H. & C.O. WITH SAND.
- SIDNEY ST. - REMOVE & SALVAGE THE M.H. CASTINGS IN FREEWAY R/W FOR USE IN THIS JOB. CONST. STD. M.H. 141-D 33' NLY. OF THE NLY. EXIST. M.H. IN FREEWAY R/W. M.H. DEPTH IS 6'±. BACKFILL M.H. IN FREEWAY R/W WITH SAND.
- DONALD AVE. } - M.H. TO REMAIN IN PLACE. CONTRACTOR TO PLUG PIPE ON UPSTREAM SIDE OF M.H.
- WILBUR ST. }
- JACKSON ST. }

LEGEND:

- TRUNK SEWER TO BE CONSTRUCTED
- PROPOSED FUTURE SEWER CONSTRUCTION
- EXISTING SEWERS
- CHIMNEYS
- WYES
- MANHOLES
- CLEANOUTS
- IRRIGATION WATER LINES

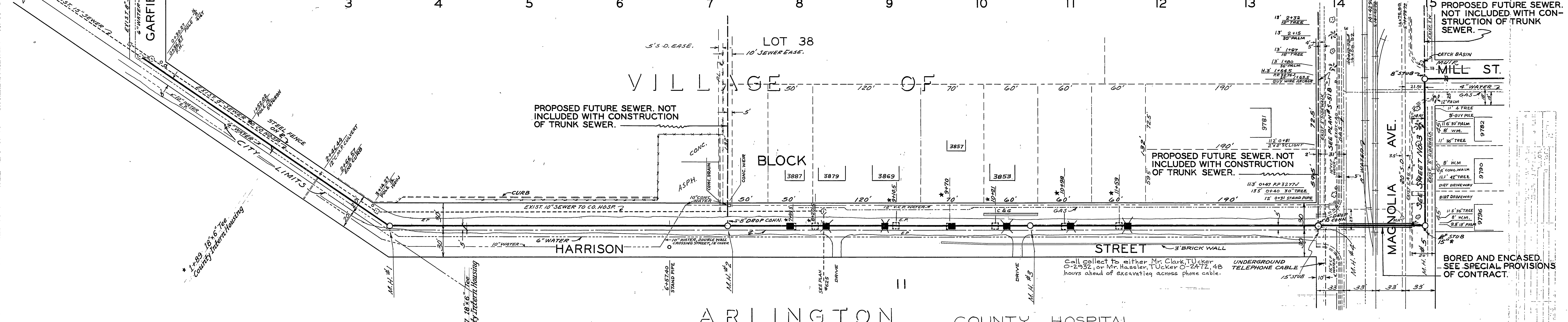
REVISIONS			CITY OF RIVERSIDE DEPARTMENT OF P.U.
MARK	DATE	DESCRIPTION	
			HARRISON-INDIANA TRUNK SEWER RELOCATION FROM THIRD STAGE NORTH-SOUTH FREEWAY CONSTRUCTION INDEX SHEET

DESIGNED BY: *B. Low*
 CHECKED BY: *H.H.*
 DRAWN BY: *Francis J. Leffler*
 ASSISTANT CITY ENGINEER
 DATE: *May 22, 1947*
 SHEET: **S-51**
 OF: *10*



Note: Casing pipe size and specifications to be determined by State Div. of Highways as indicated in special provisions.

B.M. ELEV. 768.80 L.&T. HARRISON & GARFIELD	
SCALES: VERT. 1" = 5'	
HOR. 1" = 50'	
F.B. 552-17	589-1
556-46	509-61
601-1	

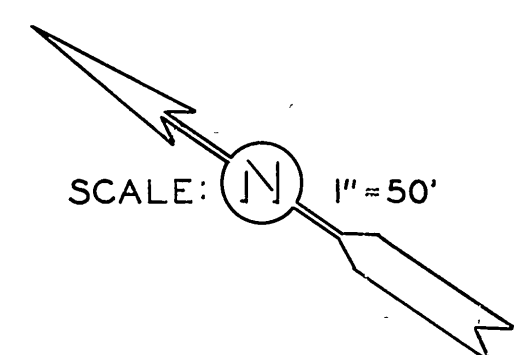


NOTE:
 1- LOCATE CHIMNEYS IN FIELD.
 2- TOPS OF CHIMNEYS TO BE 6'
 ±3" BELOW SURFACE.

ARLINGTON COUNTY HOSPITAL GROUNDS

M.B. 1/62 REC. S.B. CO.

LOT 39



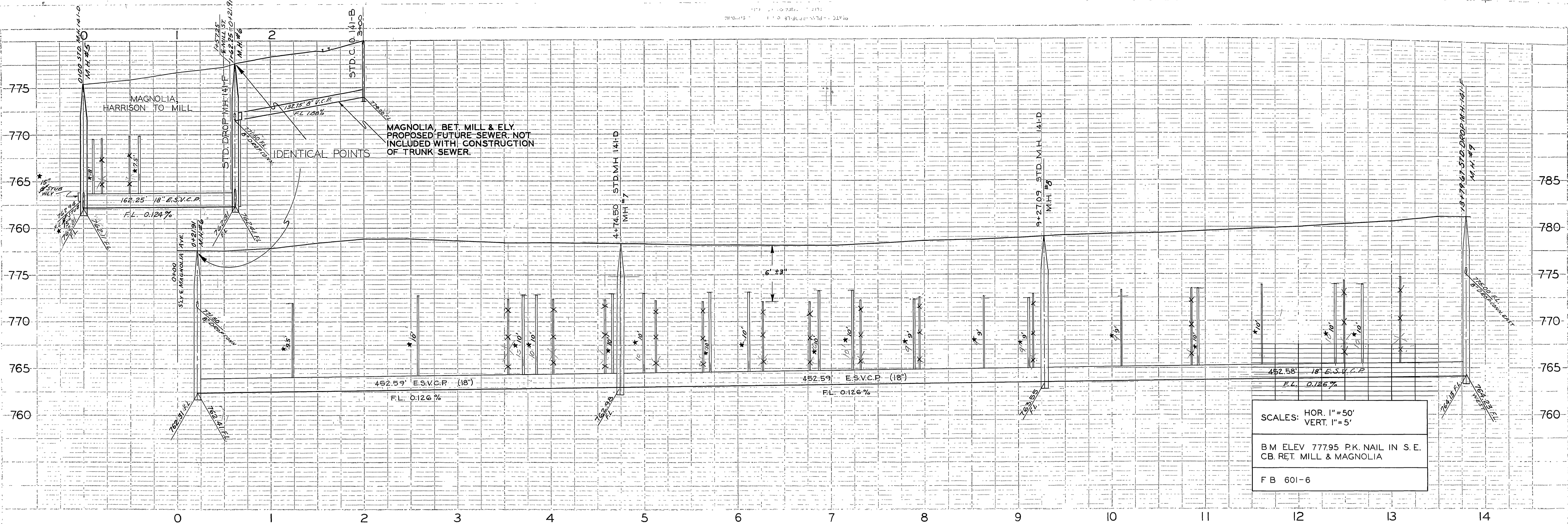
SPECIAL PROVISIONS	
DESCRIPTION	
△ 6-21-57	Incorrect pipe length. w.g.
△ 8-23-57	Revised stationing at Magnolia. w.g.
*	12-17-57 As Built changes. H.B.

CITY OF RIVERSIDE CALIFORNIA
 DEPARTMENT OF PUBLIC WORKS

HARRISON-INDIANA TRUNK SEWER
 RELOCATION FROM THIRD STAGE
 NORTH-SOUTH FREEWAY CONSTRUCTION
 HARRISON ST.
 GARFIELD TO MAGNOLIA

APPROVED BY: *[Signature]*
 DATE: May 22, 1947

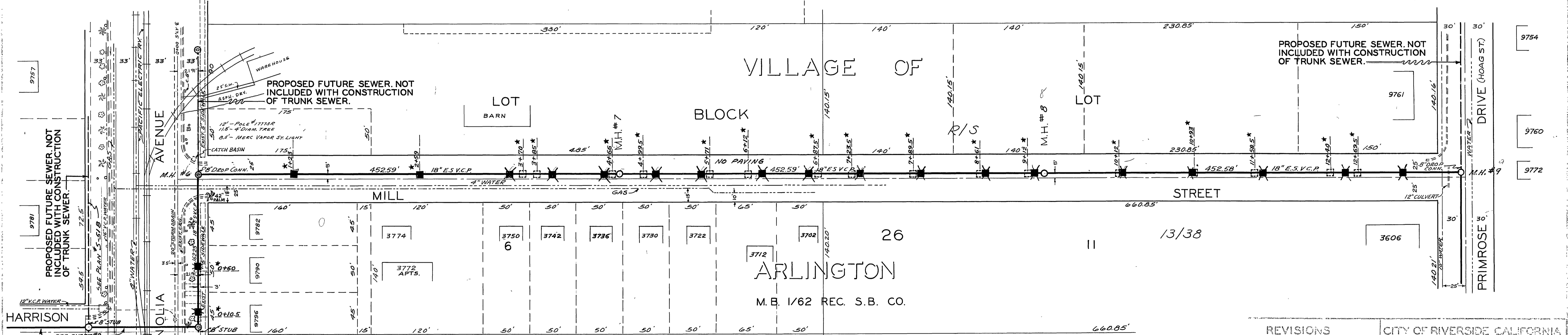
S-51
 SHEET 2 OF 10



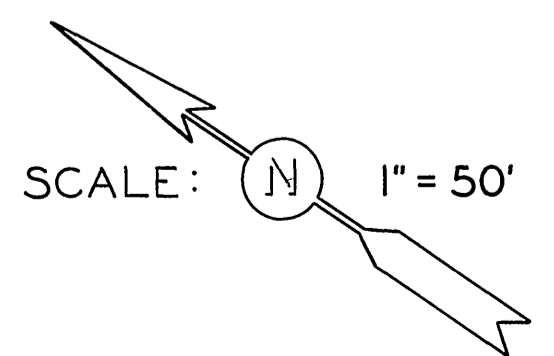
SCALES: HOR. 1" = 50'
 VERT. 1" = 5'

B.M. ELEV. 777.95 P.K. NAIL IN S.E. CB. RET. MILL & MAGNOLIA

F B 601-6



NOTE:
 1- LOCATE CHIMNEYS IN FIELD.
 2- TOPS OF CHIMNEYS TO BE 6' ± 3" BELOW SURFACE.



REVISIONS	
DATE	DESCRIPTION
12/17/57	As Built changes. H.B.

CITY OF RIVERSIDE CALIFORNIA
 DEPARTMENT OF PUBLIC WORKS

HARRISON - INDIANA TRUNK SEWER
 RELOCATION FROM THIRD STAGE NORTH-SOUTH FREEWAY CONSTRUCTION MAGNOLIA, HARRISON TO MILL AND MILL, MAGNOLIA TO PRIMROSE

DESIGNED BY: *CW*
 DRAWN BY: *CW-H.B.*

CHECKED BY: *H.H.*

APPROVED BY: *[Signature]*
 DIRECTOR OF PUBLIC WORKS

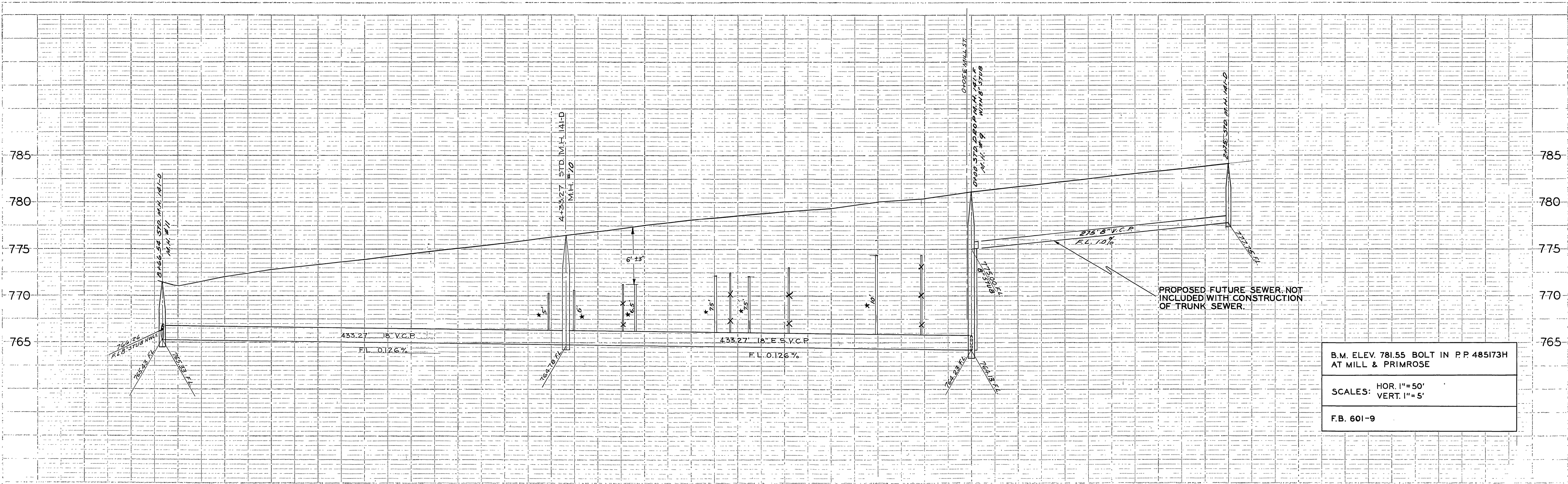
May 22, 1957

S-51

SHEET 3 OF 10

PROJECT NO. 11-106
 DATE: 12/17/57
 DRAWN BY: H.B.
 CHECKED BY: H.H.
 APPROVED BY: [Signature]
 CITY OF RIVERSIDE, CALIFORNIA

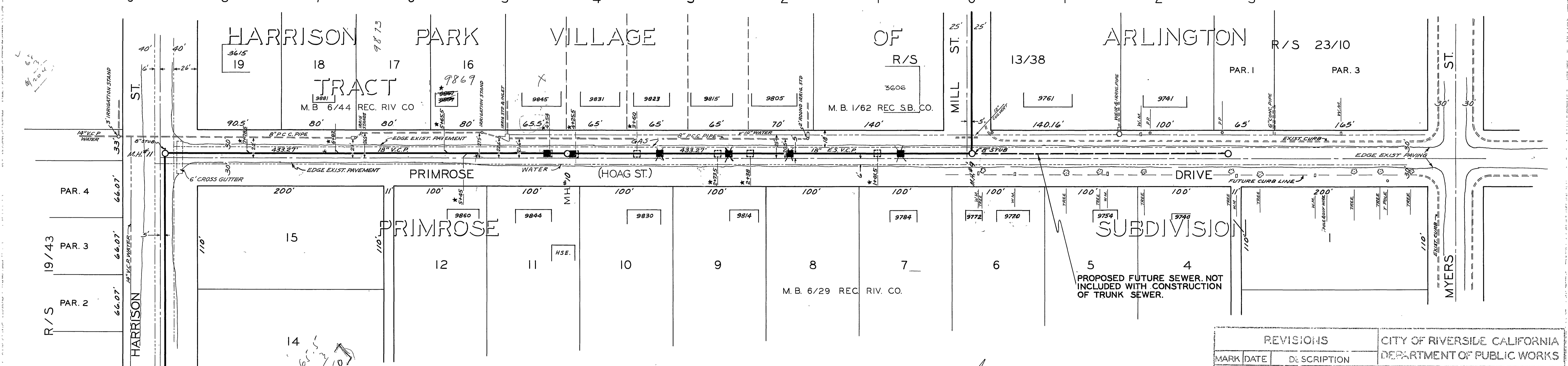
9754
 9760
 9772



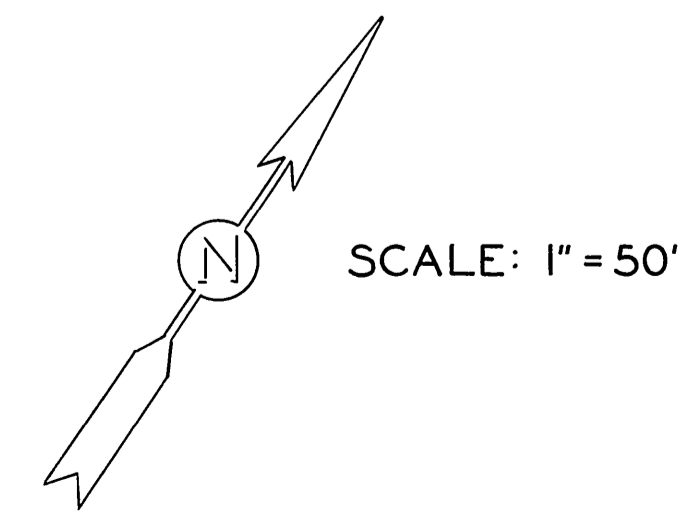
B.M. ELEV. 781.55 BOLT IN P.P. 485173H AT MILL & PRIMROSE

SCALES: HOR. 1"=50'
VERT. 1"=5'

F.B. 601-9



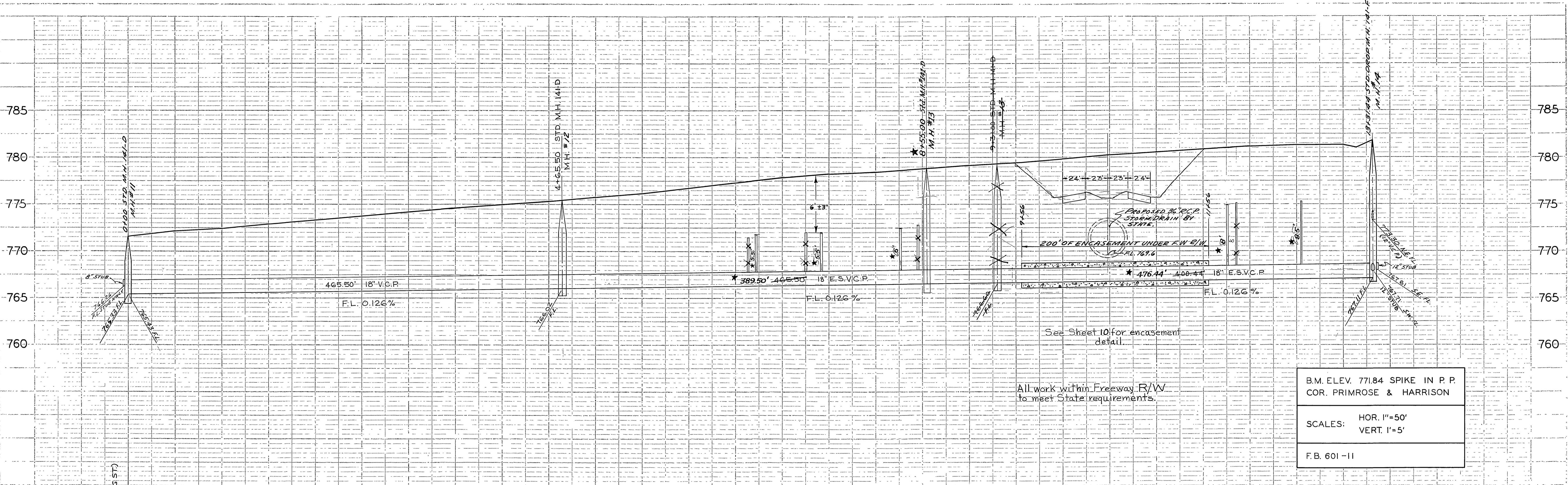
NOTE:
1- LOCATE CHIMNEYS & WYES IN FIELD.
2- TOPS OF CHIMNEYS TO BE 6'±3" BELOW SURFACE.



REVISIONS			CITY OF RIVERSIDE CALIFORNIA DEPARTMENT OF PUBLIC WORKS	
MARK	DATE	DESCRIPTION		
*	12/1/57	As Built changes - 11/8/57		

DESIGNED BY M. Y. C. W. - H. B.	CHECKED BY H. H.	APPROVED BY <i>[Signature]</i> DIRECTOR OF PUBLIC WORKS	S-51 SHEET 4 OF 10
DATE MAY 21 1967	ENGINEER'S		

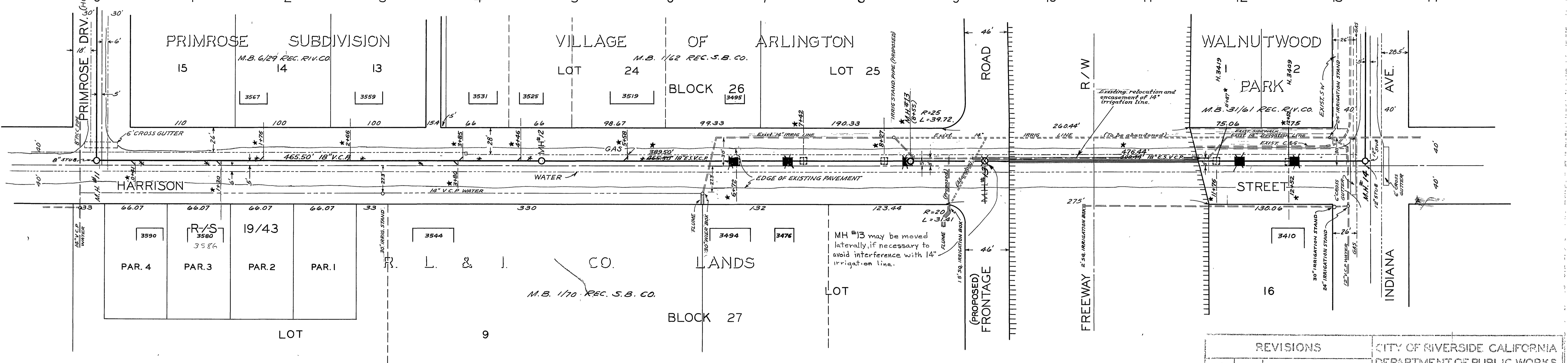
HARRISON-INDIANA TRUNK SEWER
RELOCATION FROM THIRD STAGE NORTH-SOUTH FREEWAY CONSTRUCTION
PRIMROSE DR.
HARRISON TO MILL



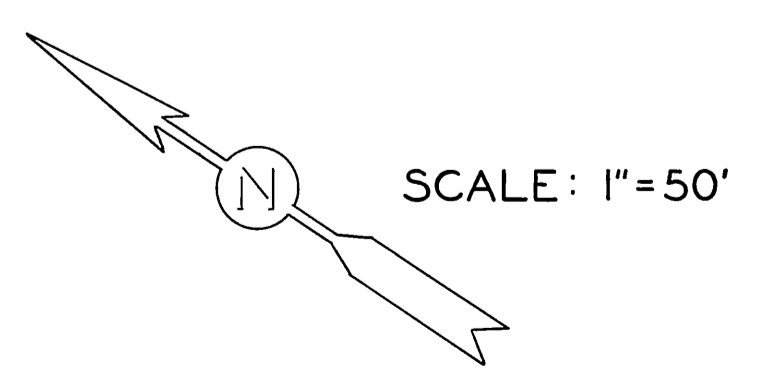
B.M. ELEV. 771.84 SPIKE IN P.P.
COR. PRIMROSE & HARRISON

SCALES: HOR. 1"=50'
VERT. 1"=5'

F.B. 601-11



NOTE:
 1- LOCATE CHIMNEYS & WYES IN FIELD.
 2- TOPS OF CHIMNEYS TO BE 6' ± 3" BELOW SURFACE.
 3- BACKFILL WITHIN THE FREEWAY RIGHT-OF-WAY TO MEET THE REQUIREMENTS OF THE CALIFORNIA STATE DIVISION OF HIGHWAYS.



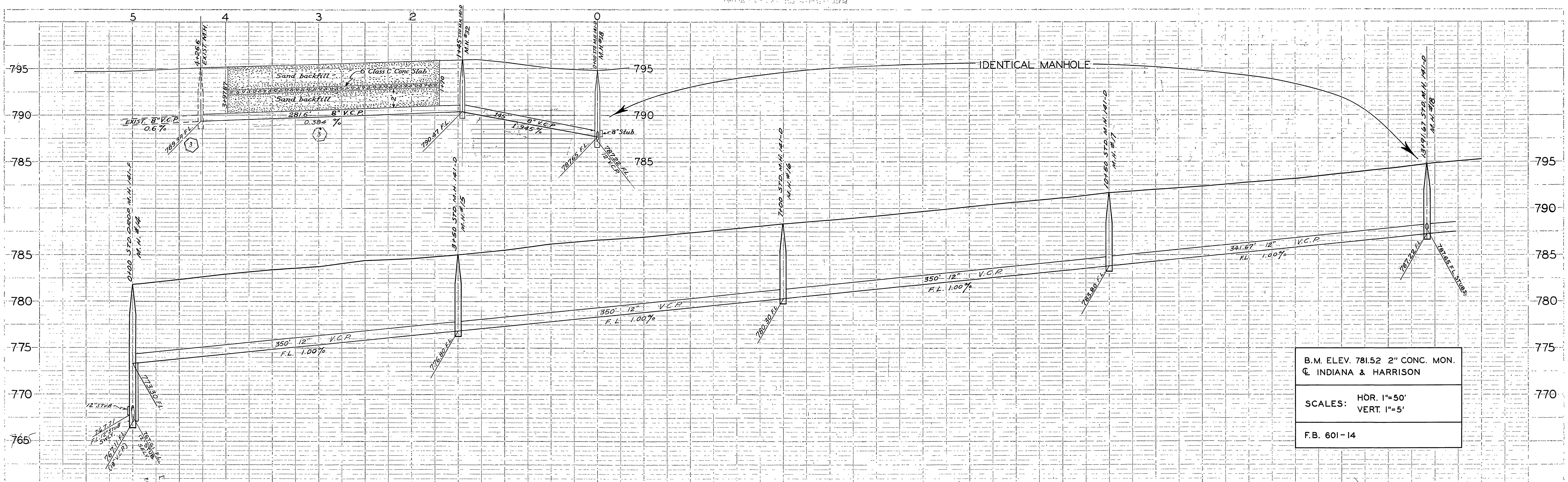
REVISIONS		CITY OF RIVERSIDE CALIFORNIA DEPARTMENT OF PUBLIC WORKS	
MARK	DATE	DESCRIPTION	
△	6-27-57	NOTE	
★	12-17-57	As Built changes - H.B.M.	

DESIGNED BY C.W.	CHECKED BY H.A.	APPROVED BY <i>[Signature]</i>
DRAWN BY C.W.-H.B.		DIRECTOR OF P. W. WORKS
RECOMMENDED BY	ASSISTANT CITY ENGINEER	DATE May 22, 1967

HARRISON-INDIANA TRUNK SEWER
 RELOCATION FROM THIRD STAGE
 NORTH-SOUTH FREEWAY CONSTRUCTION
 HARRISON ST.
 PRIMROSE TO INDIANA

S-51

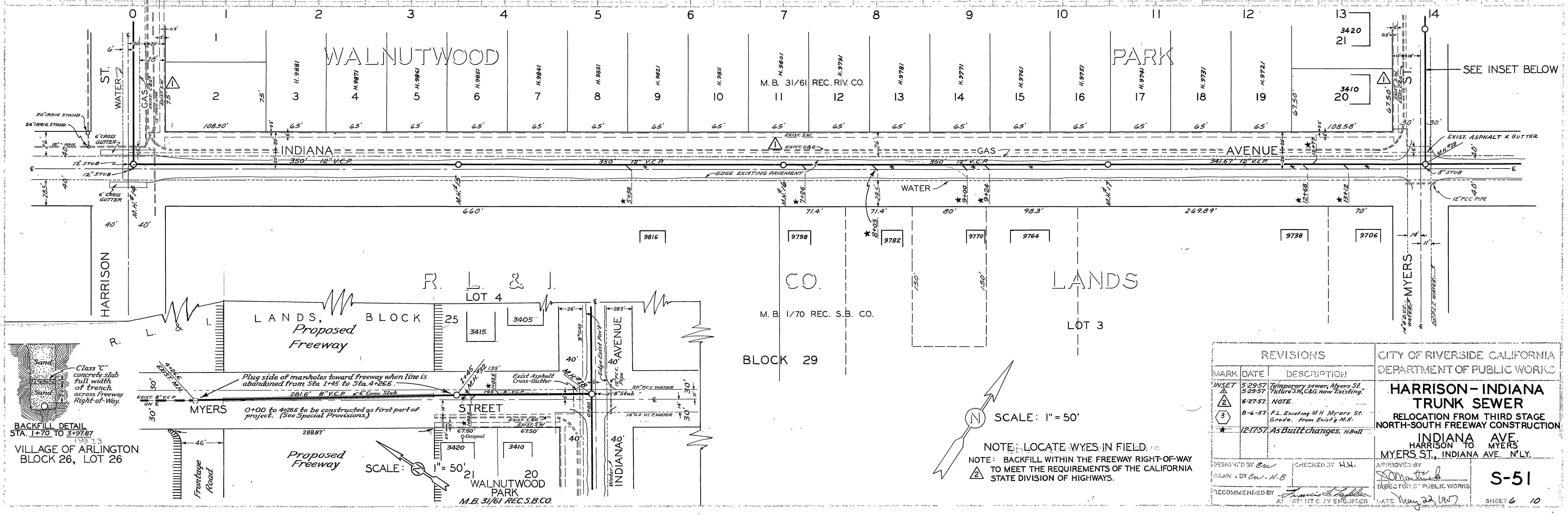
SHEET 5 OF 10



B.M. ELEV. 781.52 2" CONC. MON.
 @ INDIANA & HARRISON

SCALES: HOR. 1"=50'
 VERT. 1"=5'

F.B. 601-14



REVISIONS		
MARK	DATE	DESCRIPTION
INSET	5-29-57	Temporary sewer, Myers St.
	5-29-57	Future S.M. C&G now Existing.
△	6-27-57	NOTE
3	8-6-57	F.L. Existing M.H. Myers St. Grade from Existing M.H.
*	12-17-57	As Built changes. H.Ball

CITY OF RIVERSIDE CALIFORNIA
 DEPARTMENT OF PUBLIC WORKS

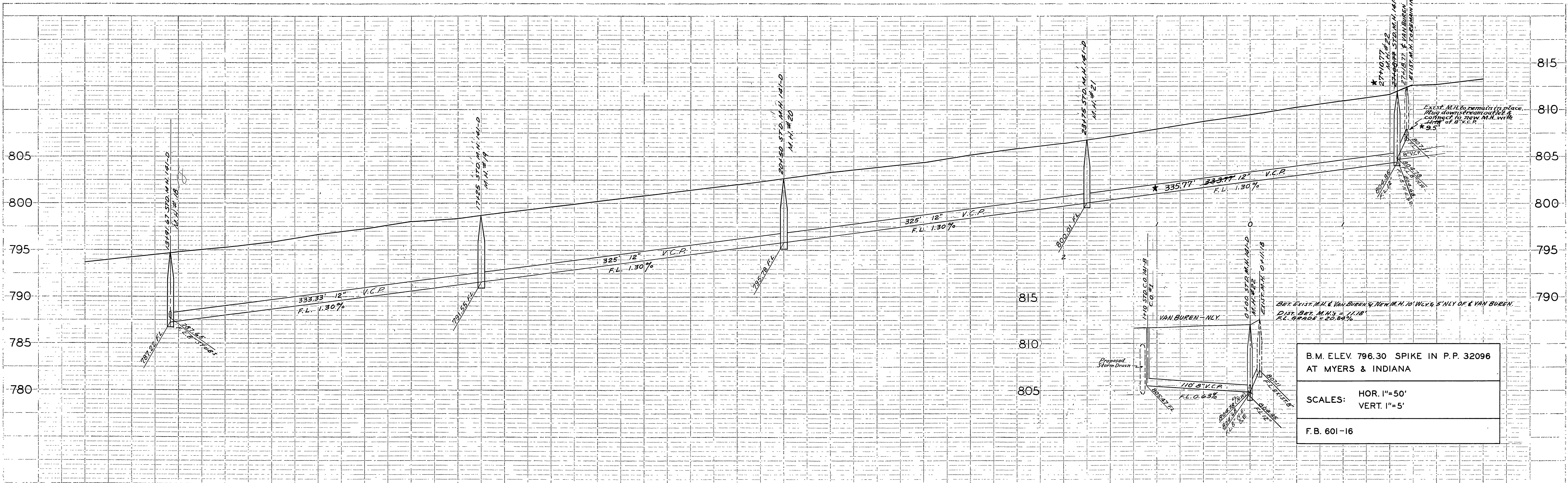
HARRISON-INDIANA TRUNK SEWER
 RELOCATION FROM THIRD STAGE
 NORTH-SOUTH FREEWAY CONSTRUCTION

INDIANA AVE.
 HARRISON TO MYERS
 MYERS ST., INDIANA AVE. N.Y.

DESIGNED BY *CW* CHECKED BY *H.N.*
 DRAWN BY *CW-H.B.*
 RECOMMENDED BY *Francis J. Reffler* AS STAFF CIVIL ENGINEER
 APPROVED BY *[Signature]* DIRECTOR OF PUBLIC WORKS
 DATE *May 22 1957*

S-51
 SHEET 6 10

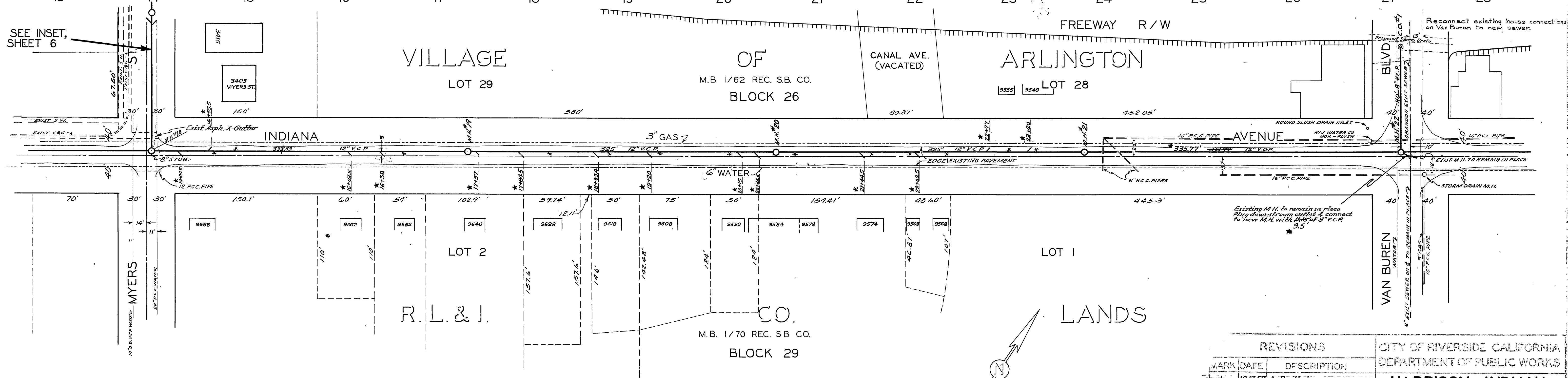
NOTE: LOCATE WYES IN FIELD.
 NOTE: BACKFILL WITHIN THE FREEWAY RIGHT-OF-WAY TO MEET THE REQUIREMENTS OF THE CALIFORNIA STATE DIVISION OF HIGHWAYS.



B.M. ELEV 796.30 SPIKE IN P.P. 32096 AT MYERS & INDIANA

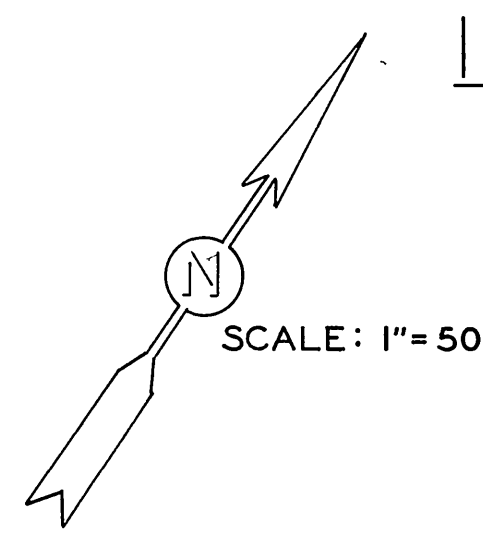
SCALES: HOR. 1"=50'
VERT. 1"=5'

F.B. 601-16



REVISIONS		CITY OF RIVERSIDE, CALIFORNIA DEPARTMENT OF PUBLIC WORKS	
MARK	DATE	DESCRIPTION	
*	12.17.57	As Built changes. <i>h.h.</i>	

DESIGNED BY <i>Cw</i>	CHECKED BY <i>H.H.</i>	APPROVED BY <i>[Signature]</i>
DRAWN BY <i>Cw, H.B.</i>		DIRECTOR OF PUBLIC WORKS
RECOMMENDED BY <i>[Signature]</i>	DATE <i>May 22, 1907</i>	



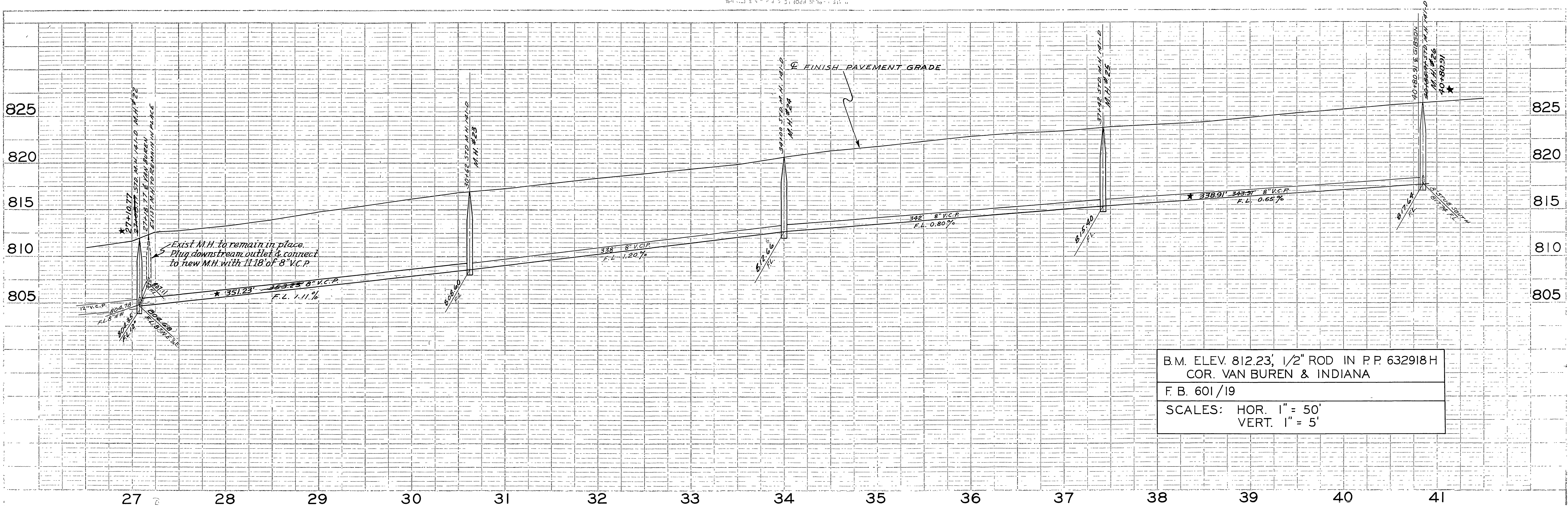
PROJECT: SEWERAGE
DATE: 12.17.57
DRAWN BY: Cw, H.B.
CHECKED BY: H.H.
APPROVED BY: [Signature]
DIRECTOR OF PUBLIC WORKS

PROJECT: SEWERAGE
DATE: 12.17.57
DRAWN BY: Cw, H.B.
CHECKED BY: H.H.
APPROVED BY: [Signature]
DIRECTOR OF PUBLIC WORKS

HARRISON-INDIANA TRUNK SEWER
RELOCATION FROM THIRD STAGE
NORTH-SOUTH FREEWAY CONSTRUCTION
INDIANA AVE.
MYERS TO VAN BUREN

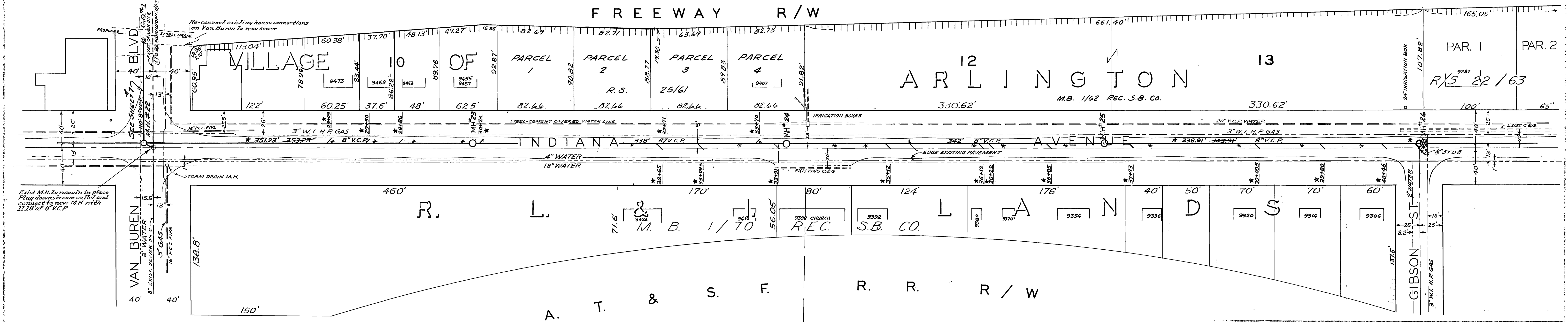
S-51

SHEET 7 OF 10

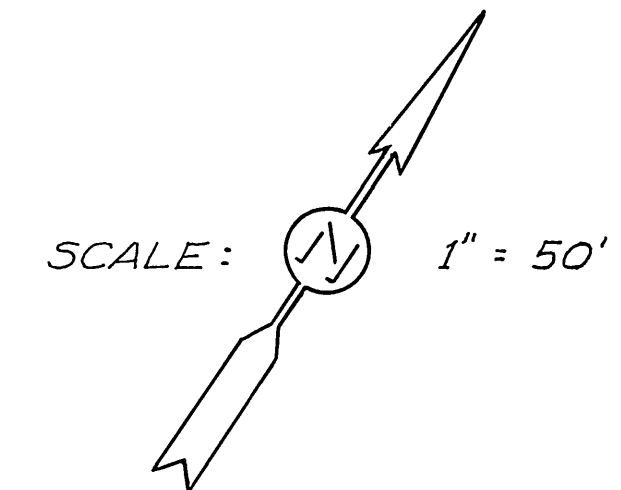


B.M. ELEV. 812.23, 1/2" ROD IN P.P. 632918 H
 COR. VAN BUREN & INDIANA
 F. B. 601/19
 SCALES: HOR. 1" = 50'
 VERT. 1" = 5'

PROFILE	SUBMITTED
NOTE BOOK	FILED
STATION	FILED
STATION	FILED



DATE	FILED
DATE	FILED
DATE	FILED
DATE	FILED

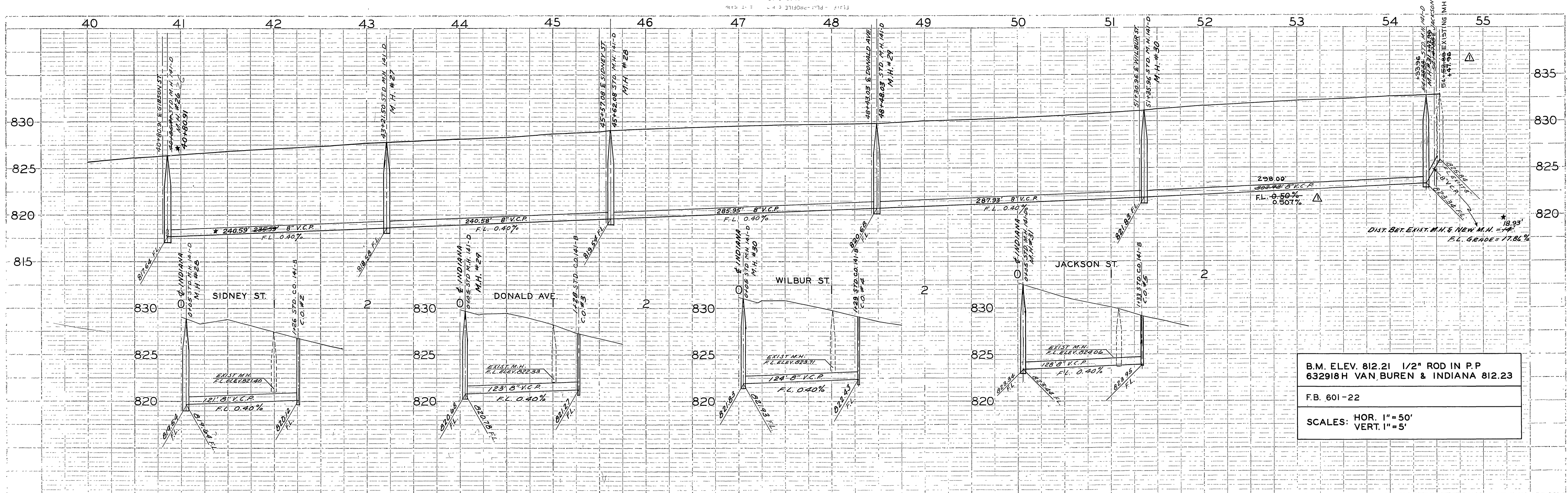


NOTE:
 LOCATE WYES IN FIELD.
 FOR TREATMENT OF SEWERS NORTH OF
 FREEWAY SEE SHEET NO. 1

REVISIONS		
MARK	DATE	DESCRIPTION
*	12/17/57	As Built changes. H.Ball

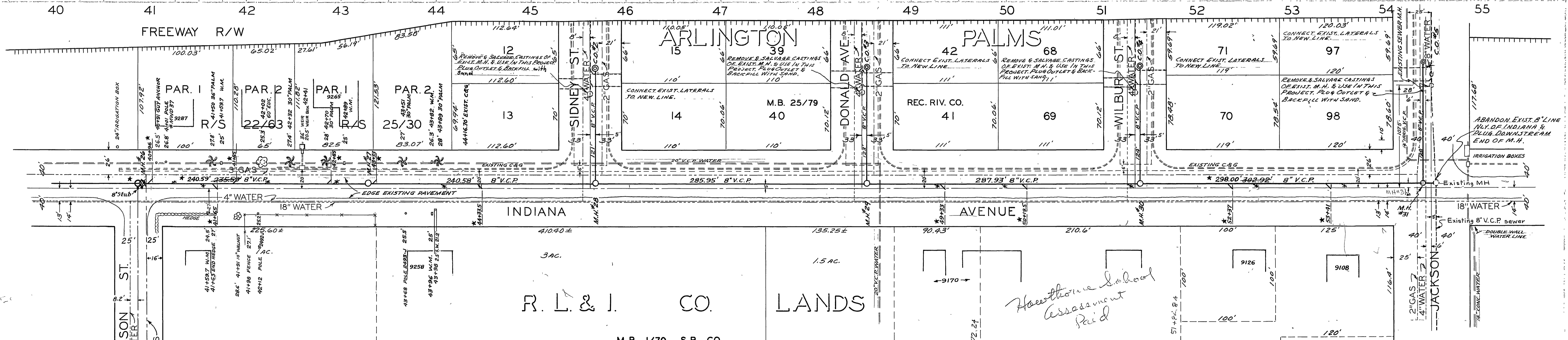
DESIGNED BY cu	CHECKED BY H.H.	APPROVED BY <i>[Signature]</i>
DATE H. Ball 12/16/56	DATE May 22, 1957	DATE

CITY OF RIVERSIDE CALIFORNIA DEPARTMENT OF PUBLIC WORKS	HARRISON-INDIANA TRUNK SEWER
RELOCATION FROM THIRD STAGE NORTH-SOUTH FREEWAY CONSTRUCTION INDIANA AVE. VAN BUREN TO GIBSON	
S-51	SHEET 8 OF 10



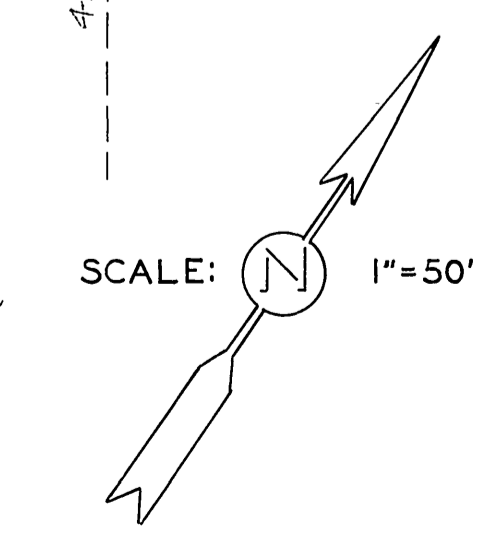
B.M. ELEV. 812.21 1/2" ROD IN P.P.
632918H VAN BUREN & INDIANA 812.23
F.B. 601-22
SCALES: HOR. 1" = 50'
VERT. 1" = 5'

1 PROFILE	STARTED
2 NOTE BOOK	PLotted
3 B.M. NOTED	AS BUILT
4	
5	
6	
7	
8	
9	
10	
11	
12	
13	
14	
15	
16	
17	
18	
19	
20	
21	
22	
23	
24	
25	
26	
27	
28	
29	
30	
31	
32	
33	
34	
35	
36	
37	
38	
39	
40	
41	
42	
43	
44	
45	
46	
47	
48	
49	
50	
51	
52	
53	
54	
55	



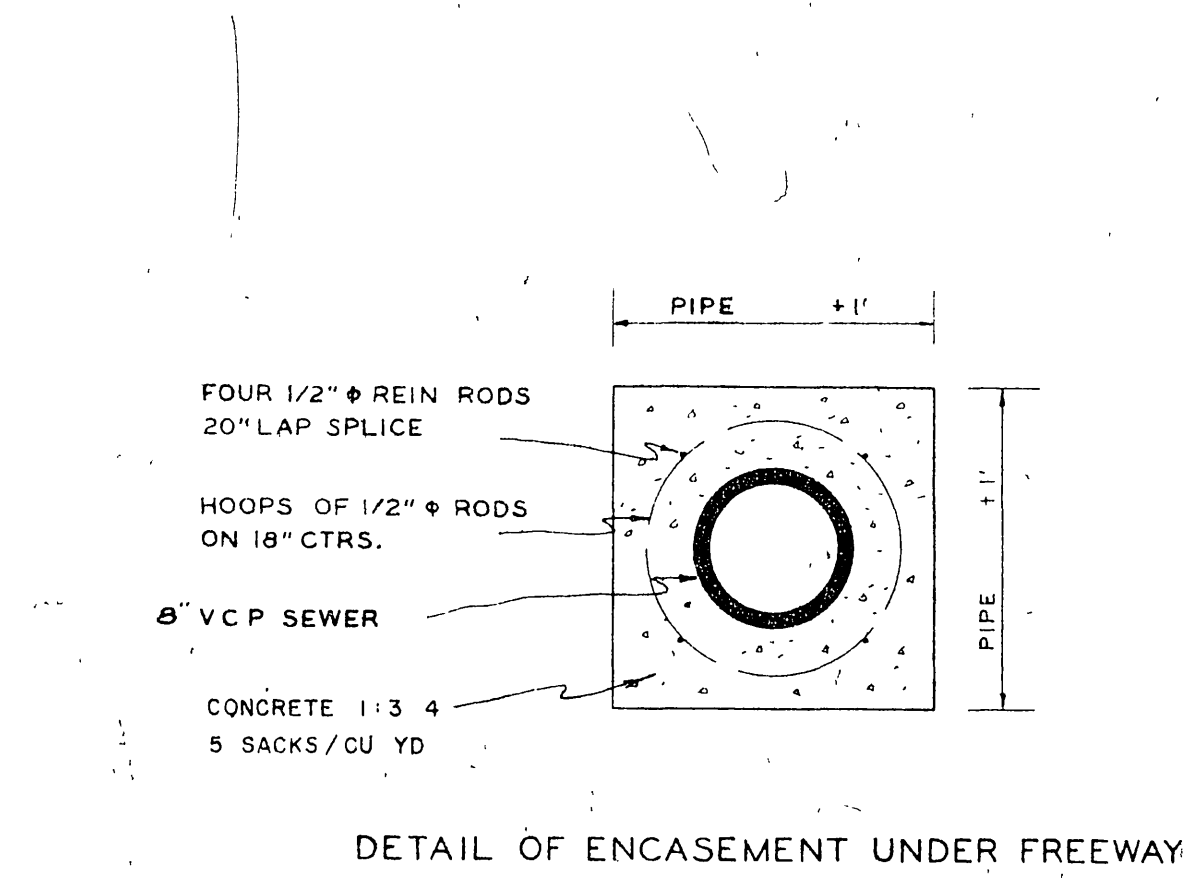
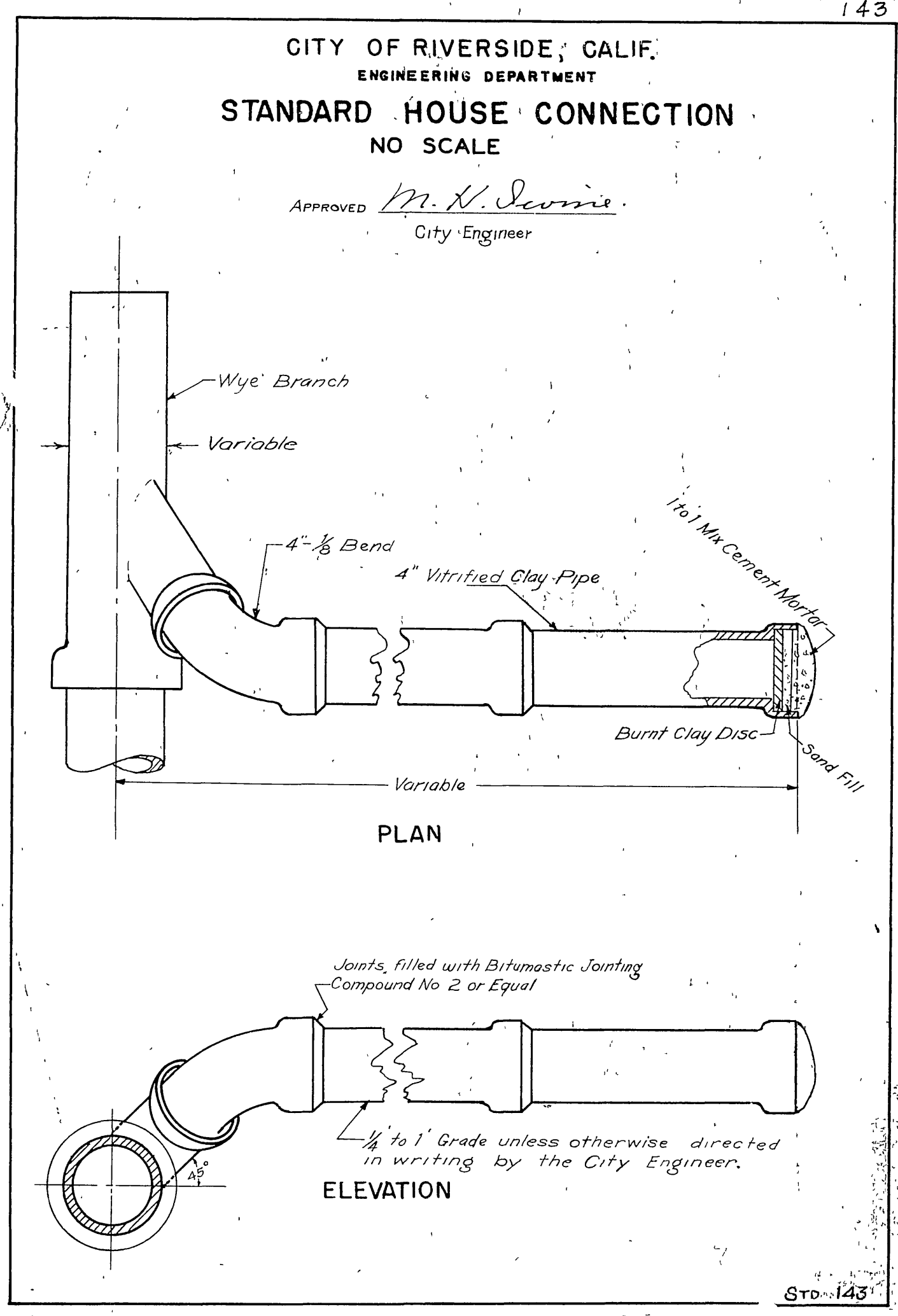
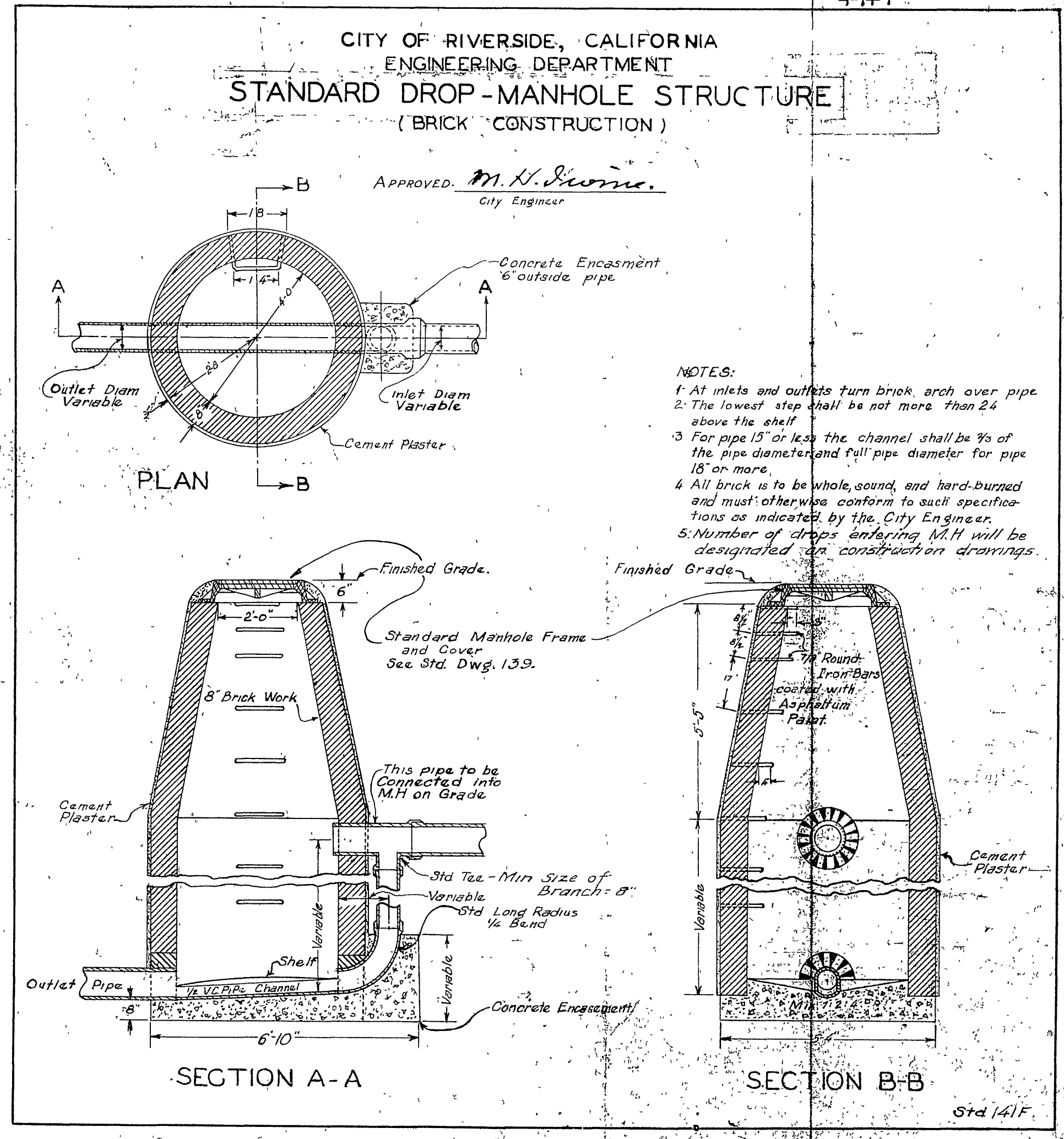
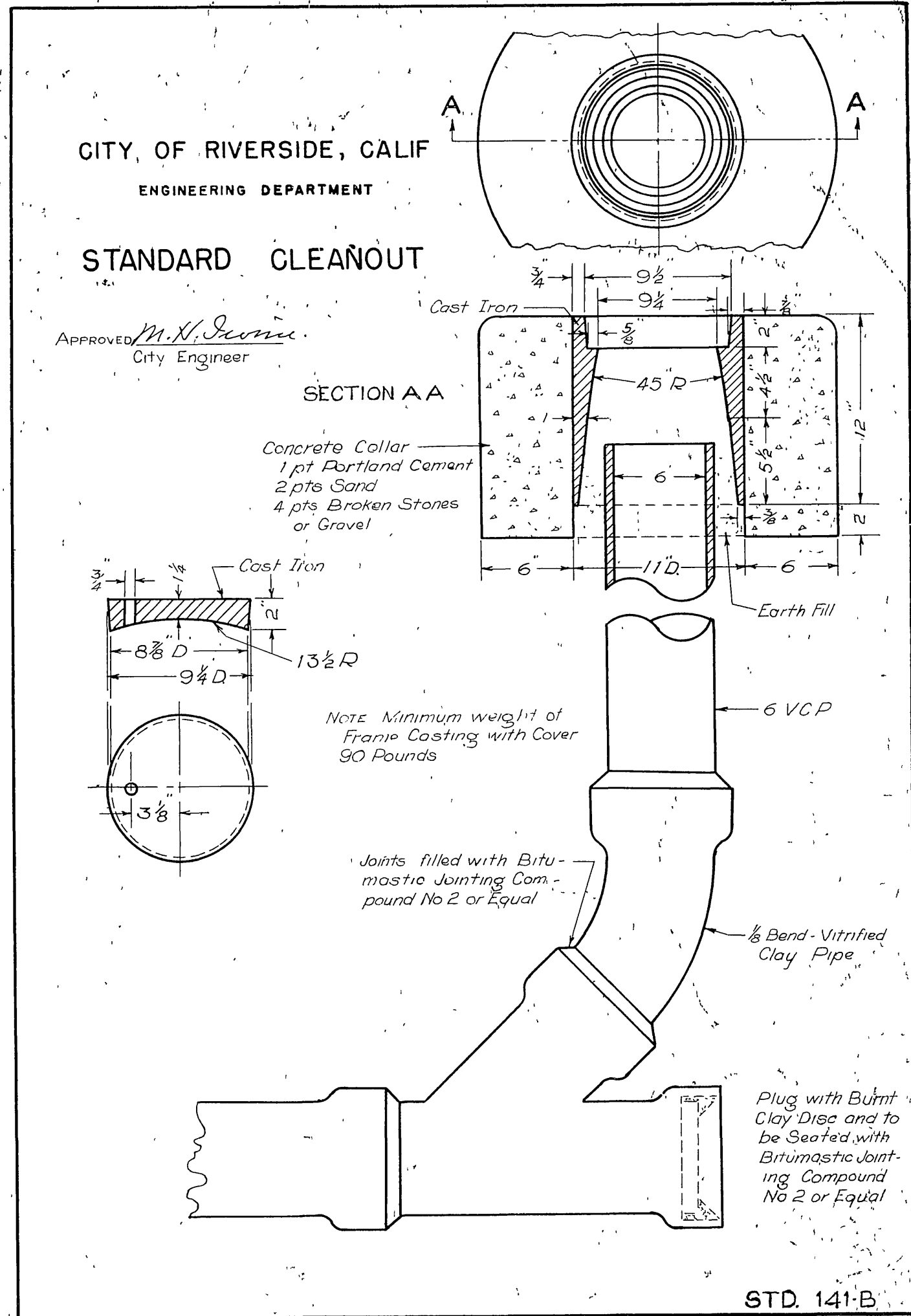
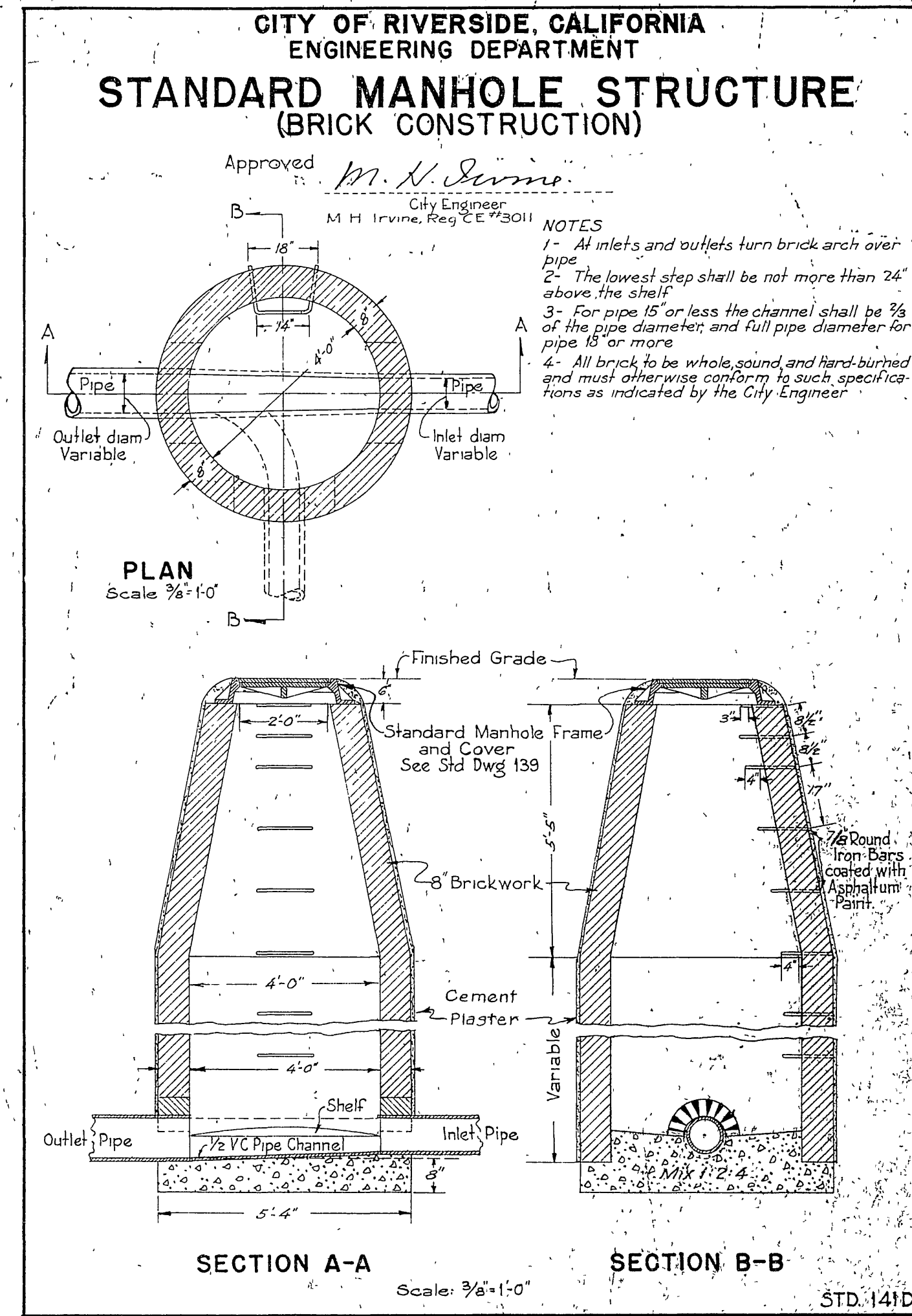
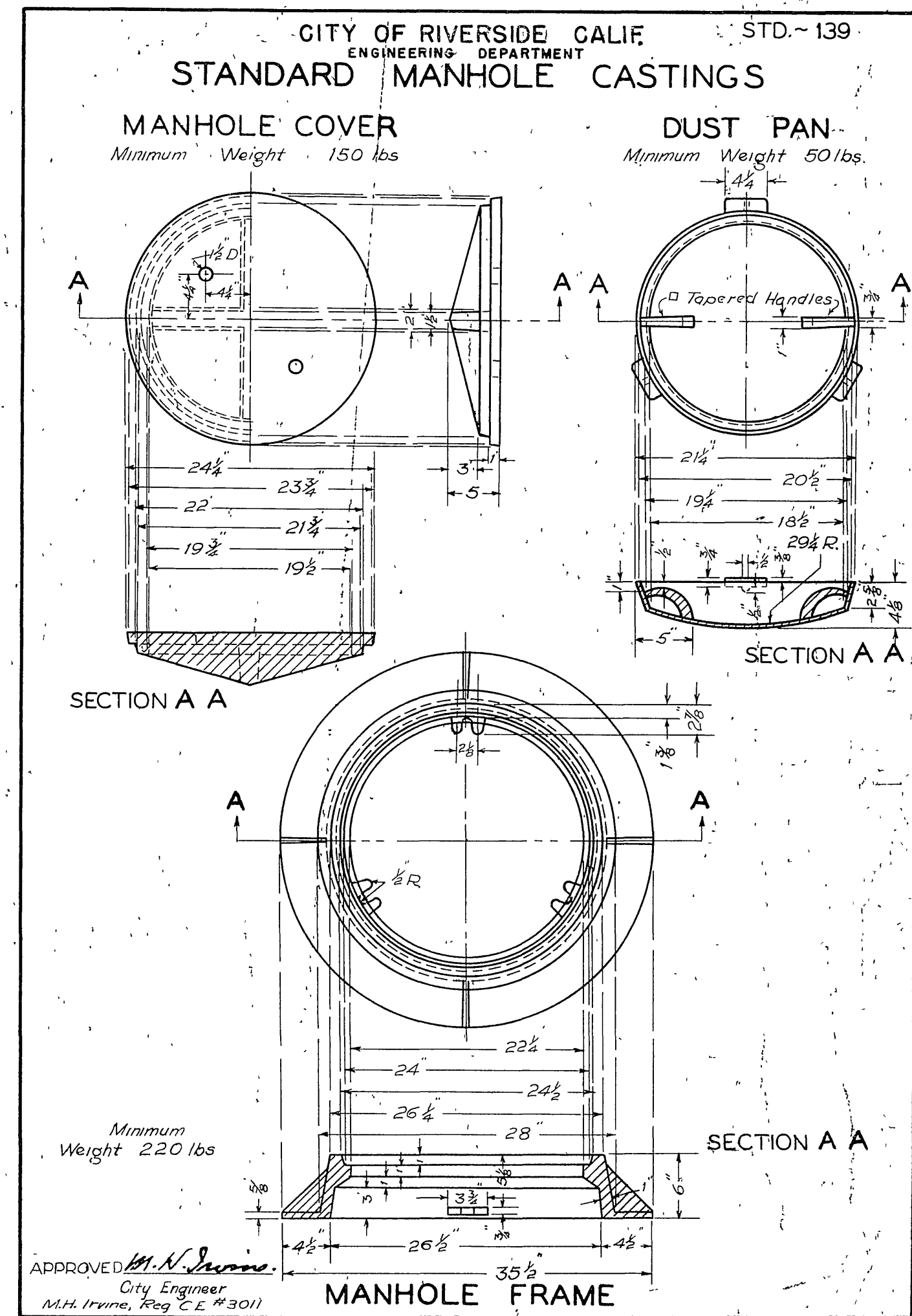
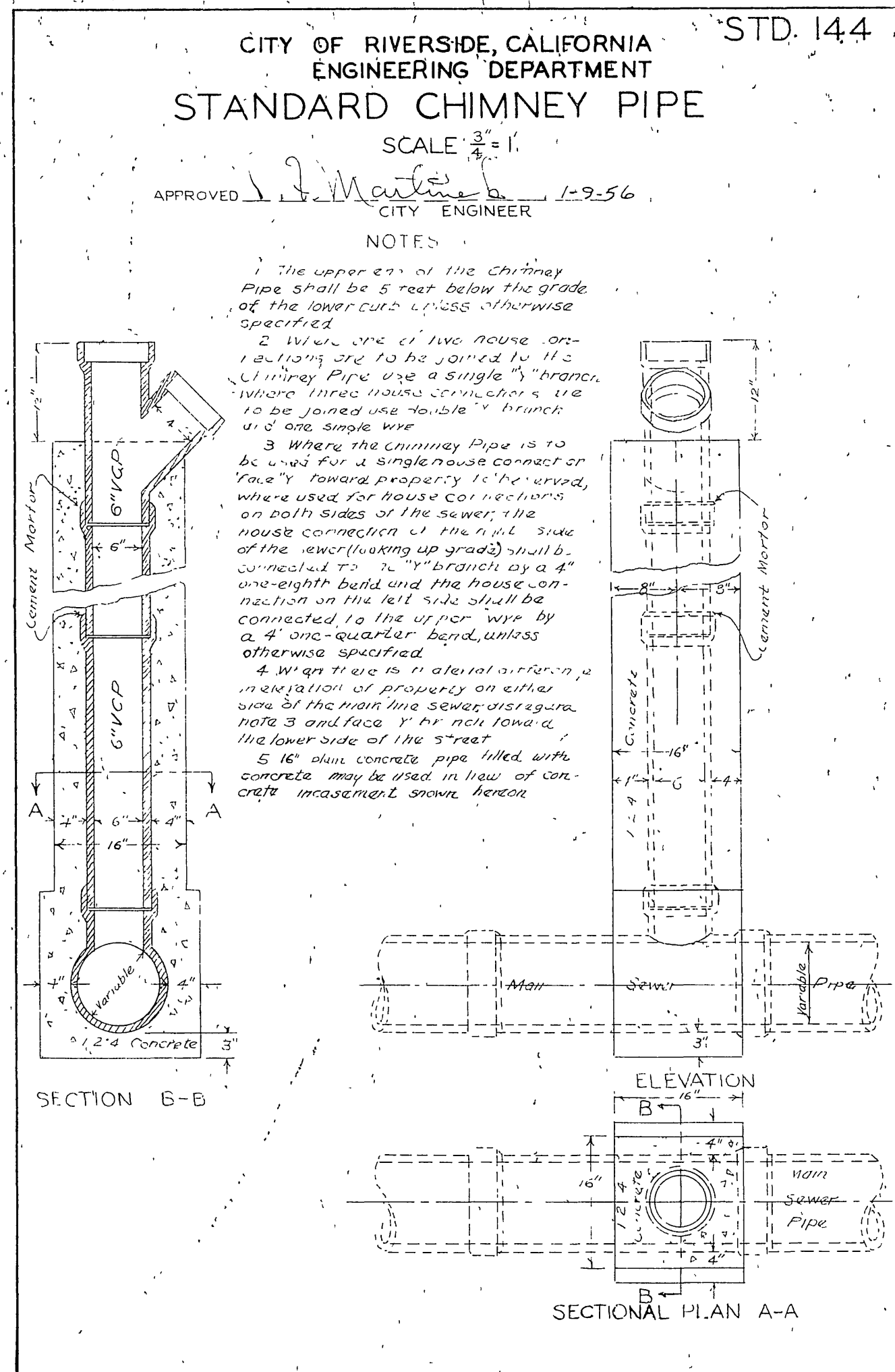
R. L. & I. CO. LANDS
M.B. 1/70 S.B. CO.

NOTE:
1. LOCATE WYES IN FIELD.
2. CONNECT EXIST. LATERALS TO NEW LINE
3. SEE SHEET ONE FOR TREATMENT OF SEWERS NORTH OF FREEWAY



REVISIONS			CITY OF RIVERSIDE CALIFORNIA DEPARTMENT OF PUBLIC WORKS
MARK	DATE	DESCRIPTION	
△	8-9-57	Corrected Chaining wdg	HARRISON-INDIANA TRUNK SEWER RELOCATION FROM THIRD STAGE NORTH-SOUTH FREEWAY CONSTRUCTION INDIANA AVE. GIBSON TO JACKSON
*	12-17-57	As Built changes. H.B.H.	

APPROVED BY C. W. H. B.	CHECKED BY M.H. <i>[Signature]</i>	APPROVED BY <i>[Signature]</i> DIRECTOR OF PUBLIC WORKS
DATE: May 22, 1957		SHEET 9 OF 10



REVISIONS		CITY OF RIVERSIDE CALIFORNIA DEPARTMENT OF PUBLIC WORKS	
MARK	DATE	DESCRIPTION	
DESIGNED BY	CHECKED BY	APPROVED BY	
DRAWN BY		DIRECTOR OF PUBLIC WORKS	
RECOMMENDED BY	ASSISTANT CITY ENGINEER	DATE	SHEET OF